

**Dallas to Houston
High-Speed Rail Project**
Project Footprint
Segment 3B, 4
Sheet 315 of 536

Legend

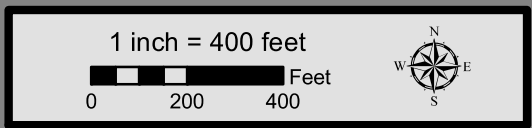
| | |
|---|--|
| Track Configuration | Limits of Disturbance by Discipline |
| — Viaduct | Yellow: Rail |
| — Embankment | Grey: Highway |
| — Cut | Pink: Train Maintenance Facility |
| Limits of Disturbance by Segment | Brown: Maintenance of Way Facility |
| Green: Segment 1 | Cyan: Systems* |
| Pink: Segment 2A | Orange: Utilities |
| Yellow: Segment 2B | Blue: Hydro/Drainage |
| Cyan: Segment 3A | Green: Station |
| Orange: Segment 3B | Purple: Structures |
| Blue: Segment 3C | Light Pink: Temporary Construction |
| Purple: Segment 4 | |
| Green: Segment 5 | |
| Limits of Disturbance by Impact Type | |
| Red Hatched: Permanent | |
| Green Hatched: Temporary | |
| — Railroad | |
| — Property Boundary | |
| — County Boundary | |

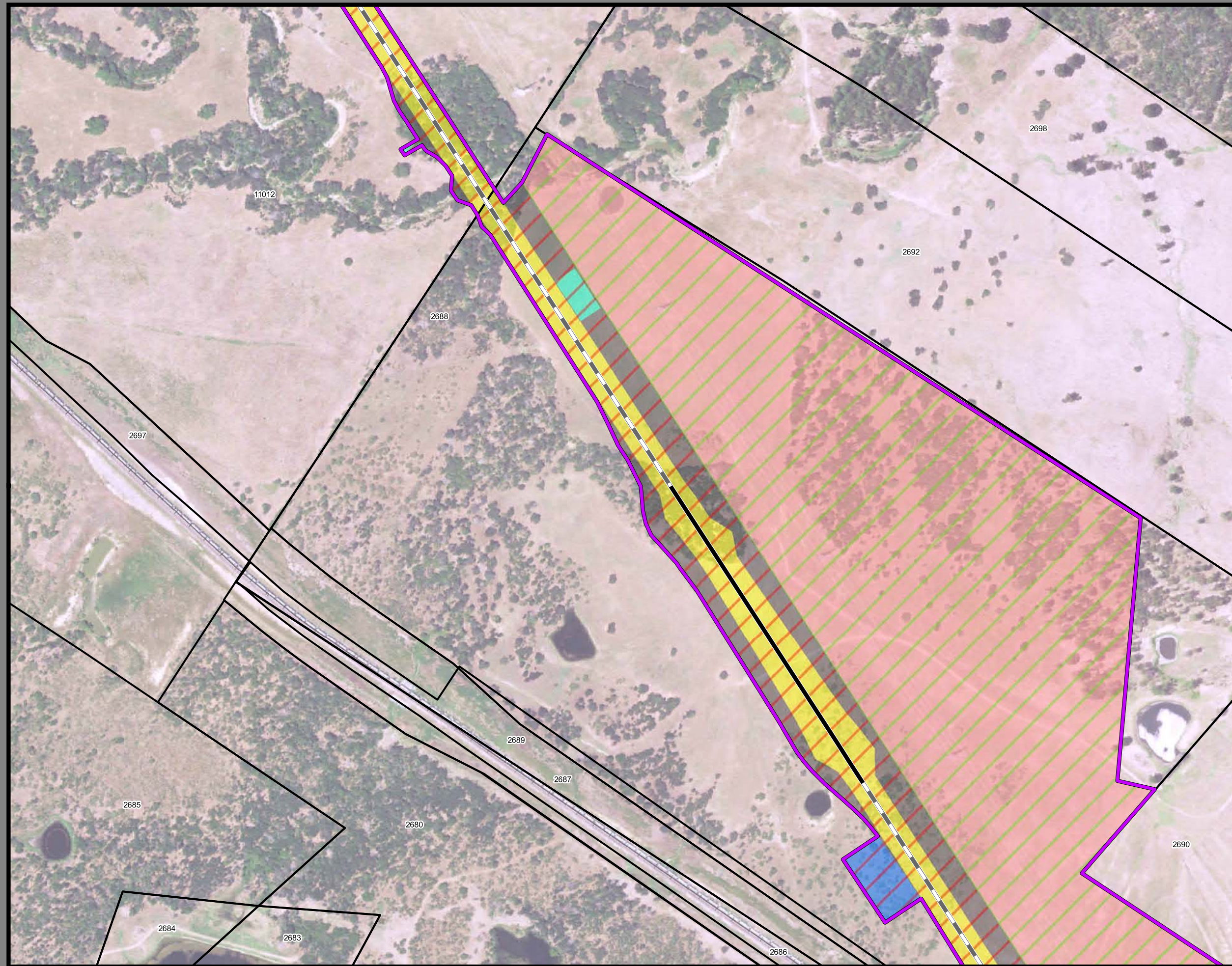
This Sheet only depicts Segments 3B & 4; Segment 3A is also located in the same area and can be referenced on page 124.

Property ID -This is a unique identifier that corresponds with the Property identification number.

*Systems data includes associated systems and facilities for the HSR, such as ATP, communication systems, SP, SSP and TPSS.

Data Sources: Parcel Data - Contract Land Staff - April 26, 2017
Aerial Imagery: USDA NAIP 2014





**Dallas to Houston
High-Speed Rail Project
Project Footprint
Segment 4
Sheet 316 of 536**

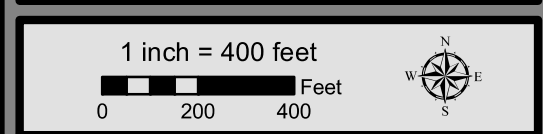
Legend

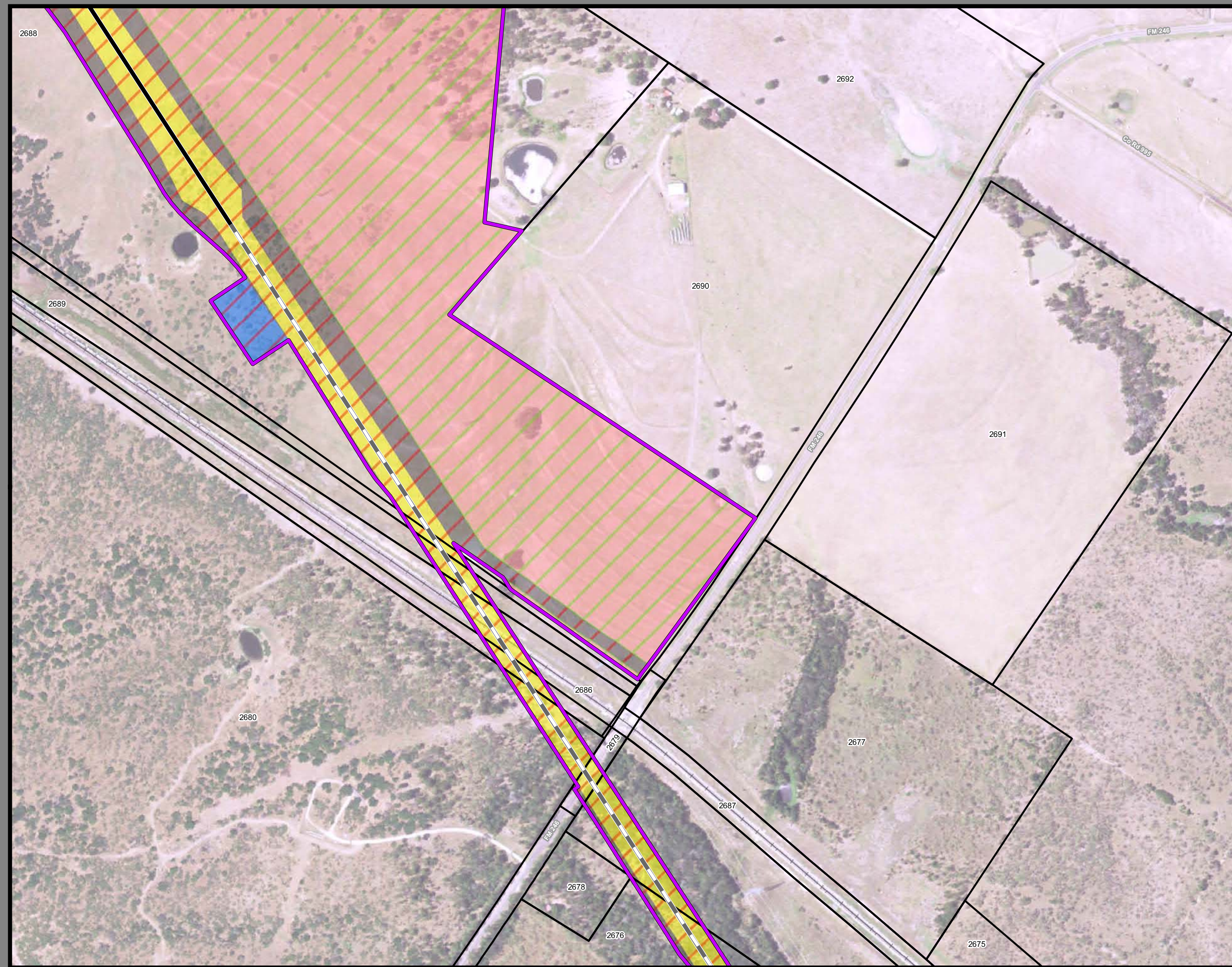
| | |
|---|--|
| Track Configuration | Limits of Disturbance by Discipline |
| — Viaduct | Yellow Rail |
| — Embankment | Grey Highway |
| — Cut | Purple Train Maintenance Facility |
| Limits of Disturbance by Segment | Brown Maintenance of Way Facility |
| Green Segment 1 | Cyan Systems* |
| Pink Segment 2A | Orange Utilities |
| Yellow Segment 2B | Blue Hydro/Drainage |
| Cyan Segment 3A | Green Station |
| Orange Segment 3B | Purple Structures |
| Blue Segment 3C | Pink Temporary Construction |
| Dark Blue Segment 4 | |
| Purple Segment 5 | |
| Limits of Disturbance by Impact Type | |
| Red Diagonal Permanent | |
| Green Diagonal Temporary | |
| Black Railroad | |
| Black Property Boundary | |
| Grey County Boundary | |

Property ID -This is a unique identifier that corresponds with the Property identification number.

*Systems data includes associated systems and facilities for the HSR, such as ATP, communication systems, SP, SSP and TPSS.

Data Sources: Parcel Data - Contract Land Staff - April 26, 2017
Aerial Imagery: USDA NAIP 2014





**Dallas to Houston
High-Speed Rail Project
Project Footprint
Segment 4
Sheet 317 of 536**

Legend

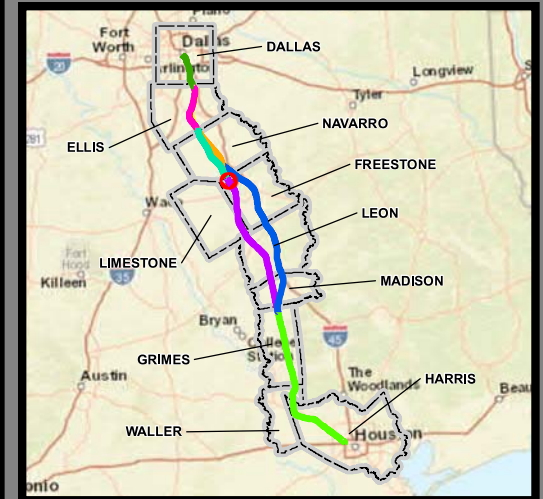
| | |
|---|--|
| Track Configuration | Limits of Disturbance by Discipline |
| — Viaduct | Yellow: Rail |
| — Embankment | Grey: Highway |
| — Cut | Pink: Train Maintenance Facility |
| Limits of Disturbance by Segment | Brown: Maintenance of Way Facility |
| Green: Segment 1 | Cyan: Systems* |
| Pink: Segment 2A | Orange: Utilities |
| Yellow: Segment 2B | Blue: Hydro/Drainage |
| Cyan: Segment 3A | Green: Station |
| Orange: Segment 3B | Purple: Structures |
| Blue: Segment 3C | Light Pink: Temporary Construction |
| Purple: Segment 4 | |
| Light Green: Segment 5 | |
| Limits of Disturbance by Impact Type | |
| Red Diagonal Lines: Permanent | |
| Green Diagonal Lines: Temporary | |
| — Railroad | |
| — Property Boundary | |
| — County Boundary | |

Property ID -This is a unique identifier that corresponds with the Property identification number.

*Systems data includes associated systems and facilities for the HSR, such as ATP, communication systems, SP, SSP and TPSS.

Data Sources: Parcel Data - Contract Land Staff - April 26, 2017
Aerial Imagery: USDA NAIP 2014





**Dallas to Houston
High-Speed Rail Project
Project Footprint
Segment 4
Sheet 318 of 536**

Legend

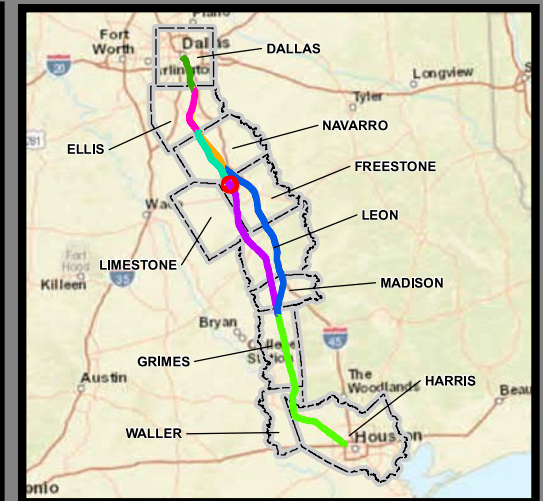
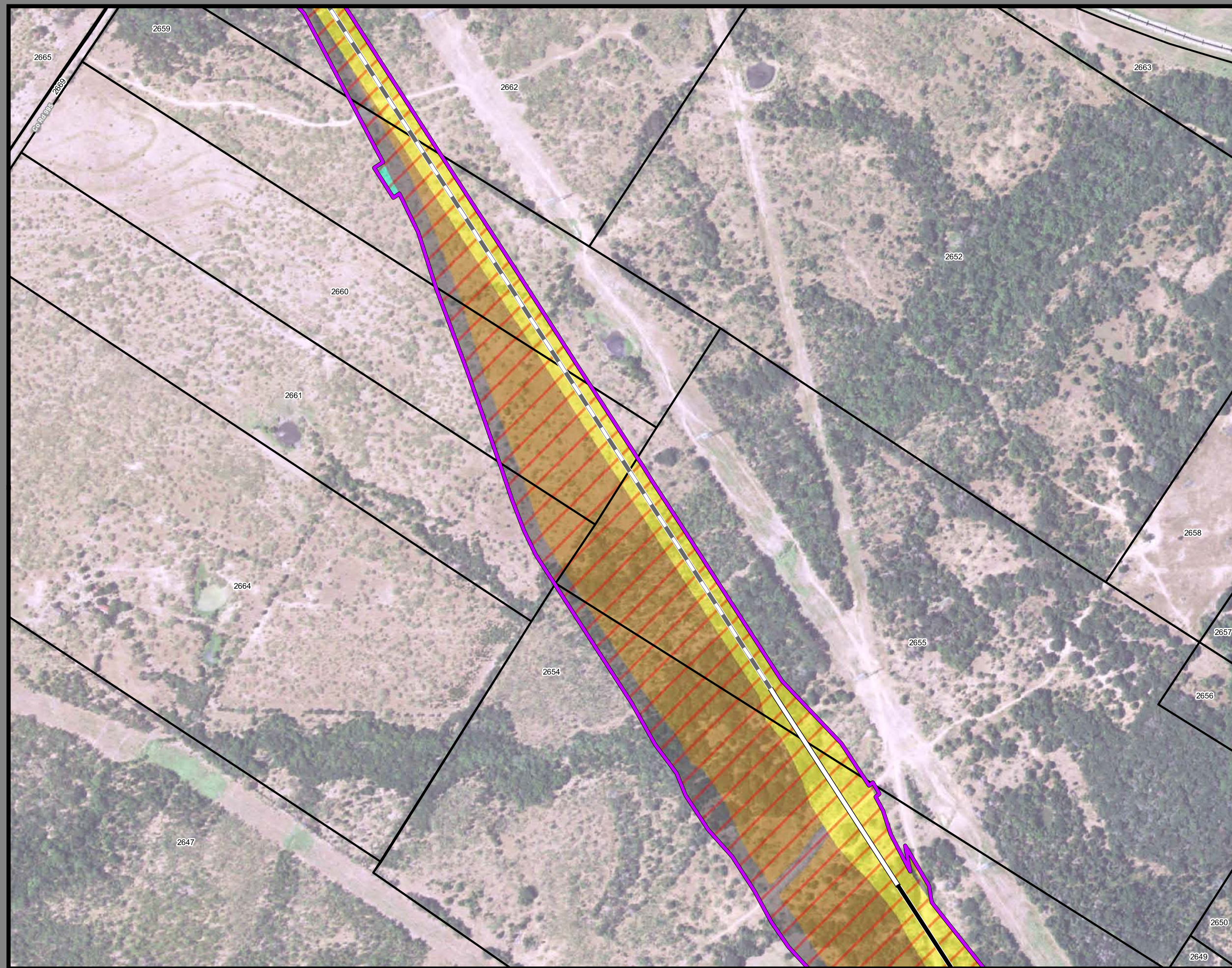
| | |
|---|--|
| Track Configuration | Limits of Disturbance by Discipline |
| — Viaduct | Yellow Rail |
| — Embankment | Grey Highway |
| — Cut | Purple Train Maintenance Facility |
| Limits of Disturbance by Segment | Brown Maintenance of Way Facility |
| Green Segment 1 | Cyan Systems* |
| Pink Segment 2A | Orange Utilities |
| Yellow Segment 2B | Blue Hydro/Drainage |
| Cyan Segment 3A | Green Station |
| Orange Segment 3B | Purple Structures |
| Blue Segment 3C | Pink Temporary Construction |
| Purple Segment 4 | |
| Green Segment 5 | |
| Limits of Disturbance by Impact Type | |
| Red/White Permanent | |
| Green/White Temporary | |
| — Railroad | |
| — Property Boundary | |
| — County Boundary | |

Property ID -This is a unique identifier that corresponds with the Property identification number.

*Systems data includes associated systems and facilities for the HSR, such as ATP, communication systems, SP, SSP and TPSS.

Data Sources: Parcel Data - Contract Land Staff - April 26, 2017
Aerial Imagery: USDA NAIP 2014





**Dallas to Houston
High-Speed Rail Project
Project Footprint
Segment 4
Sheet 319 of 536**

Legend

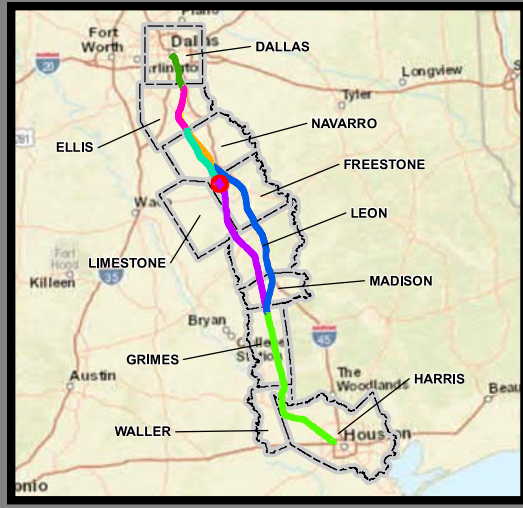
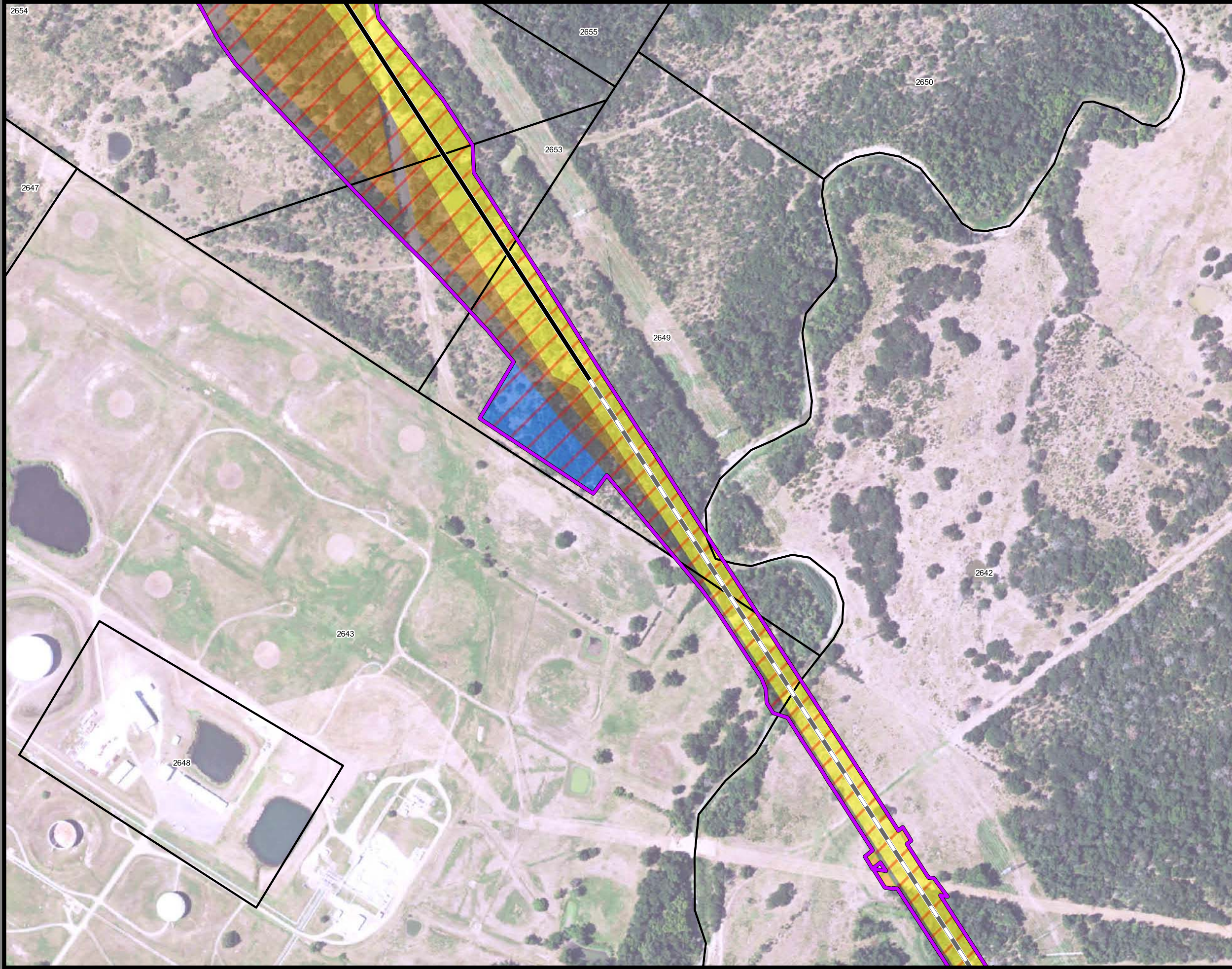
| | |
|---|--|
| Track Configuration | Limits of Disturbance by Discipline |
| — Viaduct | Yellow Rail |
| — Embankment | Grey Highway |
| — Cut | Pink Train Maintenance Facility |
| Limits of Disturbance by Segment | Brown Maintenance of Way Facility |
| Green Segment 1 | Cyan Systems* |
| Pink Segment 2A | Orange Utilities |
| Yellow Segment 2B | Blue Hydro/Drainage |
| Cyan Segment 3A | Green Station |
| Orange Segment 3B | Purple Structures |
| Blue Segment 3C | Light Pink Temporary Construction |
| Purple Segment 4 | |
| Light Green Segment 5 | |
| Limits of Disturbance by Impact Type | |
| Red Diagonal Permanent | |
| Green Diagonal Temporary | |
| Black Railroad | |
| Black Property Boundary | |
| Grey County Boundary | |

Property ID -This is a unique identifier that corresponds with the Property identification number.

*Systems data includes associated systems and facilities for the HSR, such as ATP, communication systems, SP, SSP and TPSS.

Data Sources: Parcel Data - Contract Land Staff - April 26, 2017
Aerial Imagery: USDA NAIP 2014





**Dallas to Houston
High-Speed Rail Project
Project Footprint
Segment 4
Sheet 320 of 536**

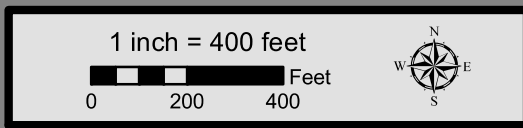
Legend

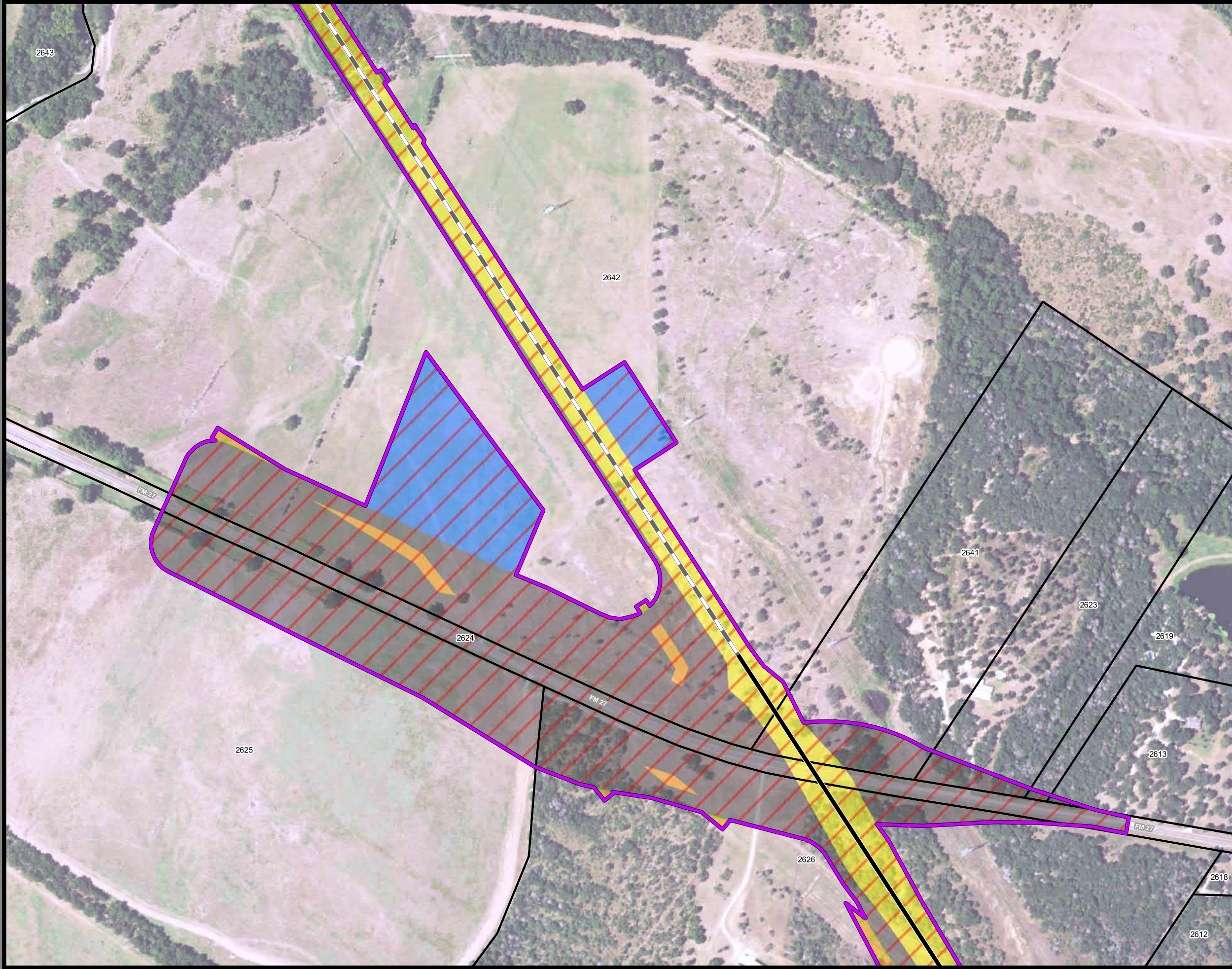
| | |
|---|--|
| Track Configuration | Limits of Disturbance by Discipline |
| — Viaduct | Yellow: Rail |
| — Embankment | Grey: Highway |
| — Cut | Pink: Train Maintenance Facility |
| Limits of Disturbance by Segment | Brown: Maintenance of Way Facility |
| Green: Segment 1 | Cyan: Systems* |
| Pink: Segment 2A | Orange: Utilities |
| Yellow: Segment 2B | Blue: Hydro/Drainage |
| Cyan: Segment 3A | Green: Station |
| Orange: Segment 3B | Purple: Structures |
| Blue: Segment 3C | Light Pink: Temporary Construction |
| Purple: Segment 4 | |
| Green: Segment 5 | |
| Limits of Disturbance by Impact Type | |
| Orange diagonal lines: Permanent | |
| Green diagonal lines: Temporary | |
| — Railroad | |
| — Property Boundary | |
| — County Boundary | |

Property ID -This is a unique identifier that corresponds with the Property identification number.

*Systems data includes associated systems and facilities for the HSR, such as ATP, communication systems, SP, SSP and TPSS.

Data Sources: Parcel Data - Contract Land Staff - April 26, 2017
Aerial Imagery: USDA NAIP 2014





**Dallas to Houston
High-Speed Rail Project**
Project Footprint
Segment 4
Sheet 321 of 536

Legend

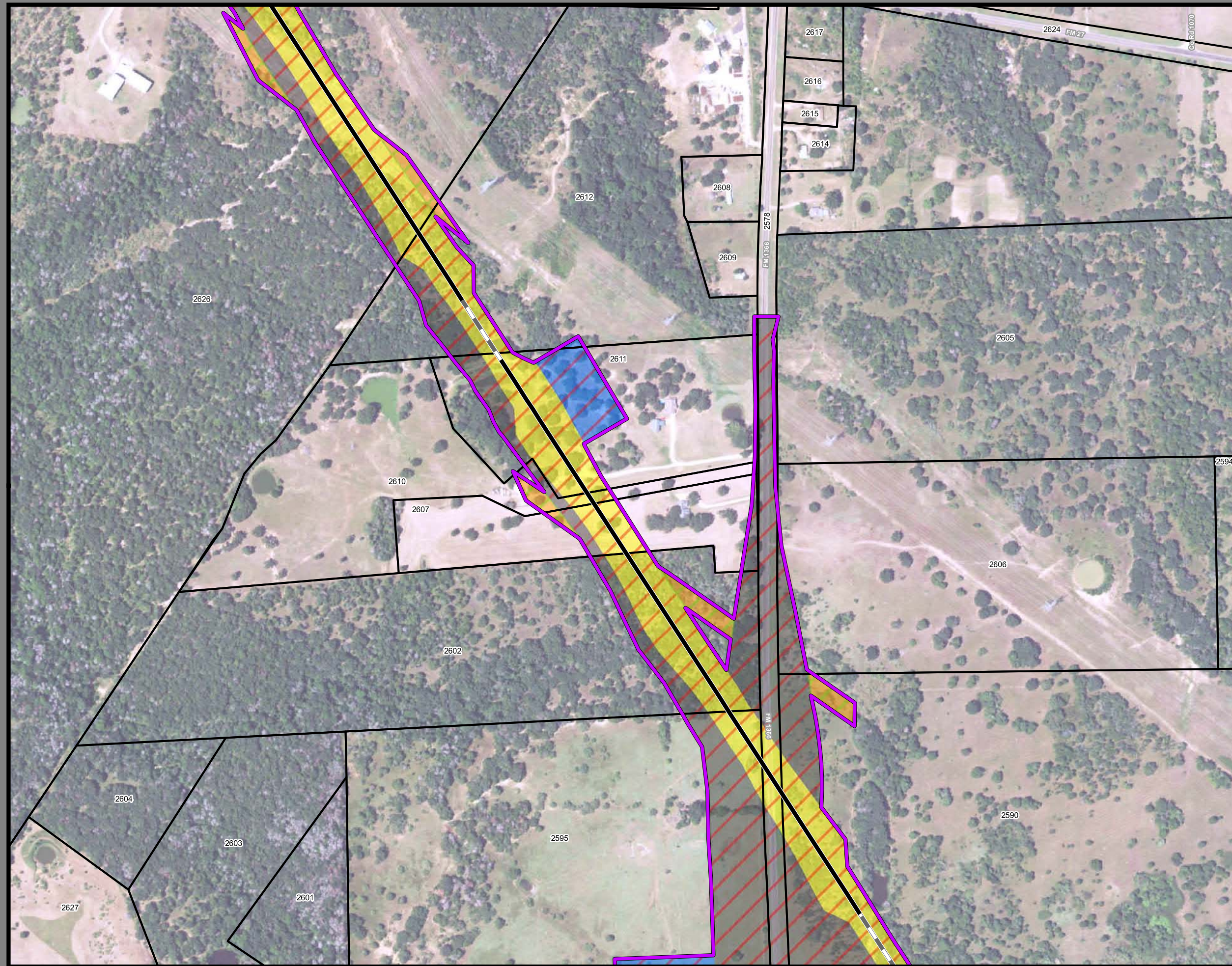
| | |
|---|--|
| Track Configuration | Limits of Disturbance by Discipline |
| — Viaduct | Yellow: Rail |
| — Embankment | Grey: Highway |
| — Cut | Pink: Train Maintenance Facility |
| Limits of Disturbance by Segment | Brown: Maintenance of Way Facility |
| Green: Segment 1 | Cyan: Systems* |
| Pink: Segment 2A | Orange: Utilities |
| Yellow: Segment 2B | Blue: Hydro/Drainage |
| Cyan: Segment 3A | Green: Station |
| Orange: Segment 3B | Purple: Structures |
| Blue: Segment 3C | Light Pink: Temporary Construction |
| Purple: Segment 4 | |
| Green: Segment 5 | |
| Limits of Disturbance by Impact Type | |
| Red Diagonal Hatching: Permanent | |
| Green Diagonal Hatching: Temporary | |
| — Railroad | |
| — Property Boundary | |
| — County Boundary | |

Property ID -This is a unique identifier that corresponds with the Property identification number.

*Systems data includes associated systems and facilities for the HSR, such as ATP, communication systems, SP, SSP and TPSS.

Data Sources: Parcel Data - Contract Land Staff - April 26, 2017
Aerial Imagery: USDA NAIP 2014





**Dallas to Houston
High-Speed Rail Project
Project Footprint
Segment 4
Sheet 322 of 536**

Legend

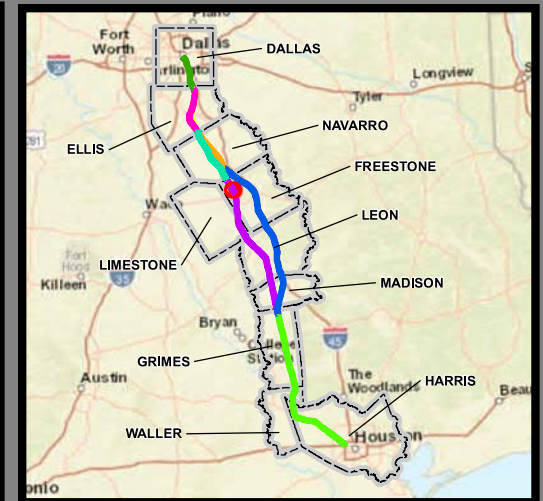
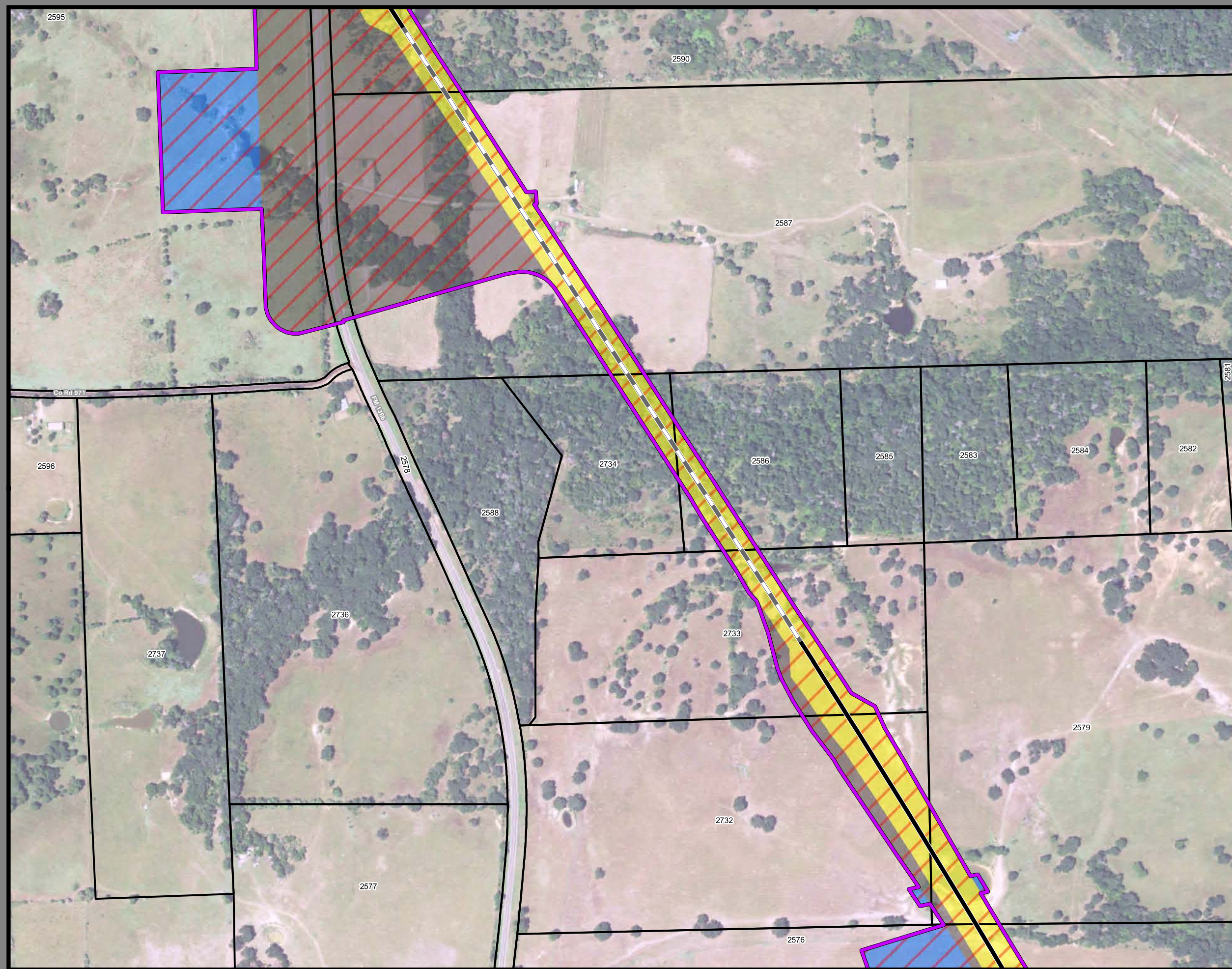
| | |
|---|--|
| Track Configuration | Limits of Disturbance by Discipline |
| — Viaduct | Yellow Rail |
| — Embankment | Grey Highway |
| — Cut | Pink Train Maintenance Facility |
| Limits of Disturbance by Segment | Brown Maintenance of Way Facility |
| Green Segment 1 | Cyan Systems* |
| Pink Segment 2A | Orange Utilities |
| Yellow Segment 2B | Blue Hydro/Drainage |
| Cyan Segment 3A | Green Station |
| Orange Segment 3B | Purple Structures |
| Blue Segment 3C | Light Pink Temporary Construction |
| Purple Segment 4 | |
| Green Segment 5 | |
| Limits of Disturbance by Impact Type | |
| Red Hatched Permanent | |
| Green Hatched Temporary | |
| Black Railroad | |
| Black Property Boundary | |
| Dashed County Boundary | |

Property ID -This is a unique identifier that corresponds with the Property identification number.

*Systems data includes associated systems and facilities for the HSR, such as ATP, communication systems, SP, SSP and TPSS.

Data Sources: Parcel Data - Contract Land Staff - April 26, 2017
Aerial Imagery: USDA NAIP 2014





**Dallas to Houston
High-Speed Rail Project
Project Footprint
Segment 4
Sheet 323 of 536**

Legend

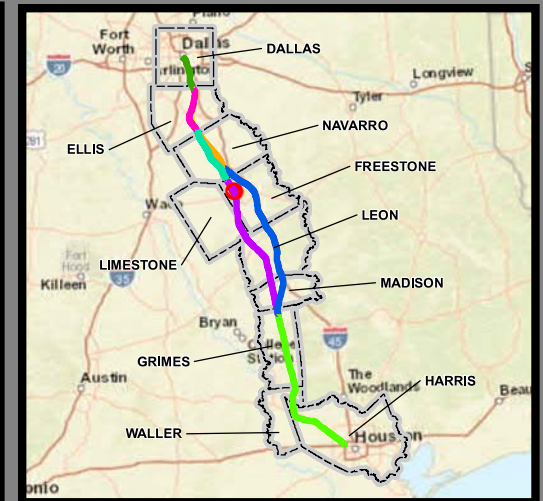
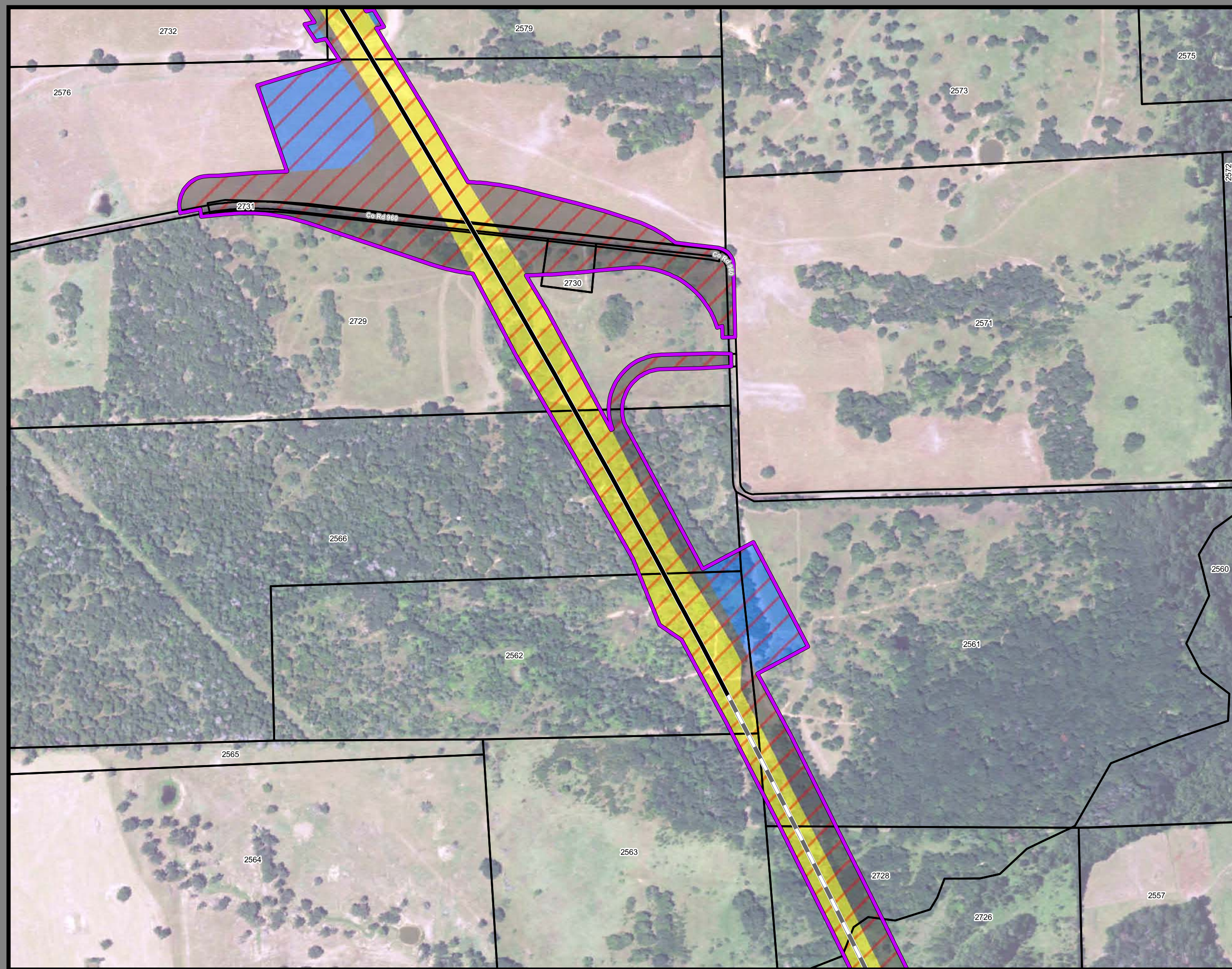
| | |
|---|--|
| Track Configuration | Limits of Disturbance by Discipline |
| — Viaduct | Yellow: Rail |
| — Embankment | Grey: Highway |
| — Cut | Pink: Train Maintenance Facility |
| Limits of Disturbance by Segment | Brown: Maintenance of Way Facility |
| Green: Segment 1 | Cyan: Systems* |
| Pink: Segment 2A | Orange: Utilities |
| Yellow: Segment 2B | Blue: Hydro/Drainage |
| Cyan: Segment 3A | Green: Station |
| Orange: Segment 3B | Purple: Structures |
| Blue: Segment 3C | Light Pink: Temporary Construction |
| Purple: Segment 4 | |
| Green: Segment 5 | |
| Limits of Disturbance by Impact Type | |
| Red diagonal lines: Permanent | |
| Green diagonal lines: Temporary | |
| Black line with cross-ticks: Railroad | |
| Black outline: Property Boundary | |
| Grey outline: County Boundary | |

Property ID -This is a unique identifier that corresponds with the Property identification number.

*Systems data includes associated systems and facilities for the HSR, such as ATP, communication systems, SP, SSP and TPSS.

Data Sources: Parcel Data - Contract Land Staff - April 26, 2017
Aerial Imagery: USDA NAIP 2014





**Dallas to Houston
High-Speed Rail Project
Project Footprint
Segment 4
Sheet 324 of 536**

Legend

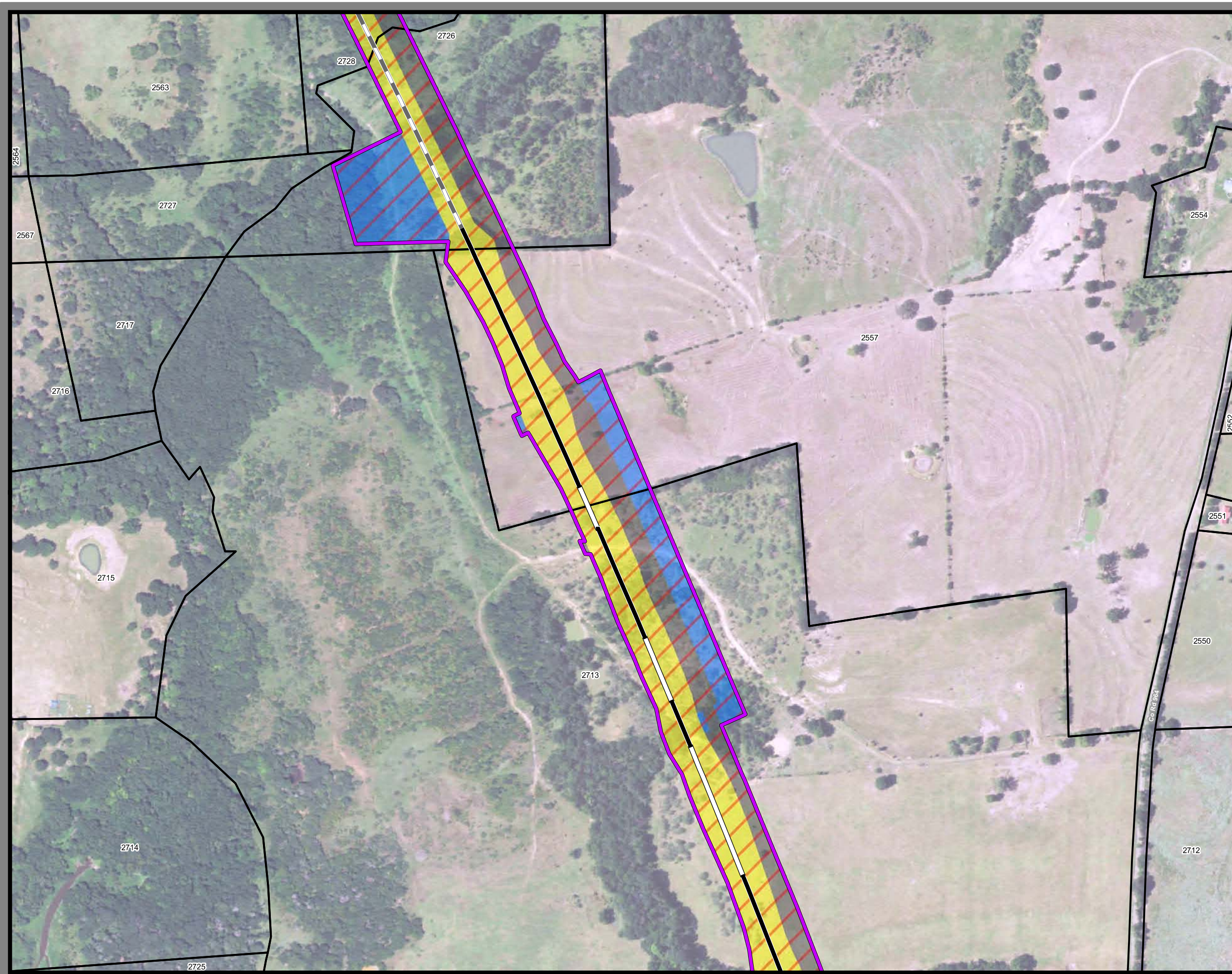
| | |
|---|--|
| Track Configuration | Limits of Disturbance by Discipline |
| — Viaduct | Yellow: Rail |
| — Embankment | Grey: Highway |
| — Cut | Pink: Train Maintenance Facility |
| Limits of Disturbance by Segment | Brown: Maintenance of Way Facility |
| Green: Segment 1 | Cyan: Systems* |
| Pink: Segment 2A | Orange: Utilities |
| Yellow: Segment 2B | Blue: Hydro/Drainage |
| Cyan: Segment 3A | Green: Station |
| Orange: Segment 3B | Purple: Structures |
| Blue: Segment 3C | Light Pink: Temporary Construction |
| Purple: Segment 4 | |
| Green: Segment 5 | |
| Limits of Disturbance by Impact Type | |
| Red diagonal lines: Permanent | |
| Green diagonal lines: Temporary | |
| — Railroad | |
| — Property Boundary | |
| — County Boundary | |

Property ID -This is a unique identifier that corresponds with the Property identification number.

*Systems data includes associated systems and facilities for the HSR, such as ATP, communication systems, SP, SSP and TPSS.

Data Sources: Parcel Data - Contract Land Staff - April 26, 2017
Aerial Imagery: USDA NAIP 2014





**Dallas to Houston
High-Speed Rail Project
Project Footprint
Segment 4
Sheet 325 of 536**

Legend

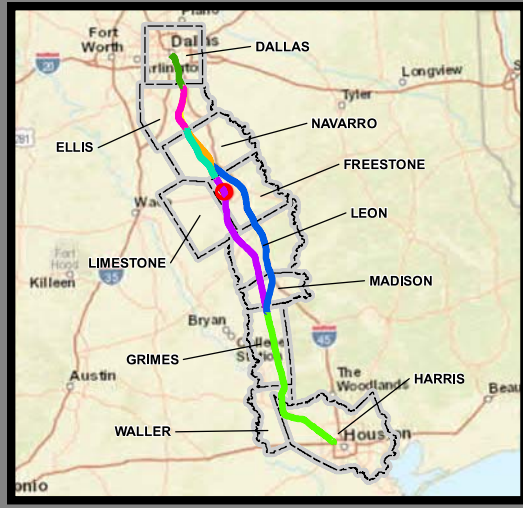
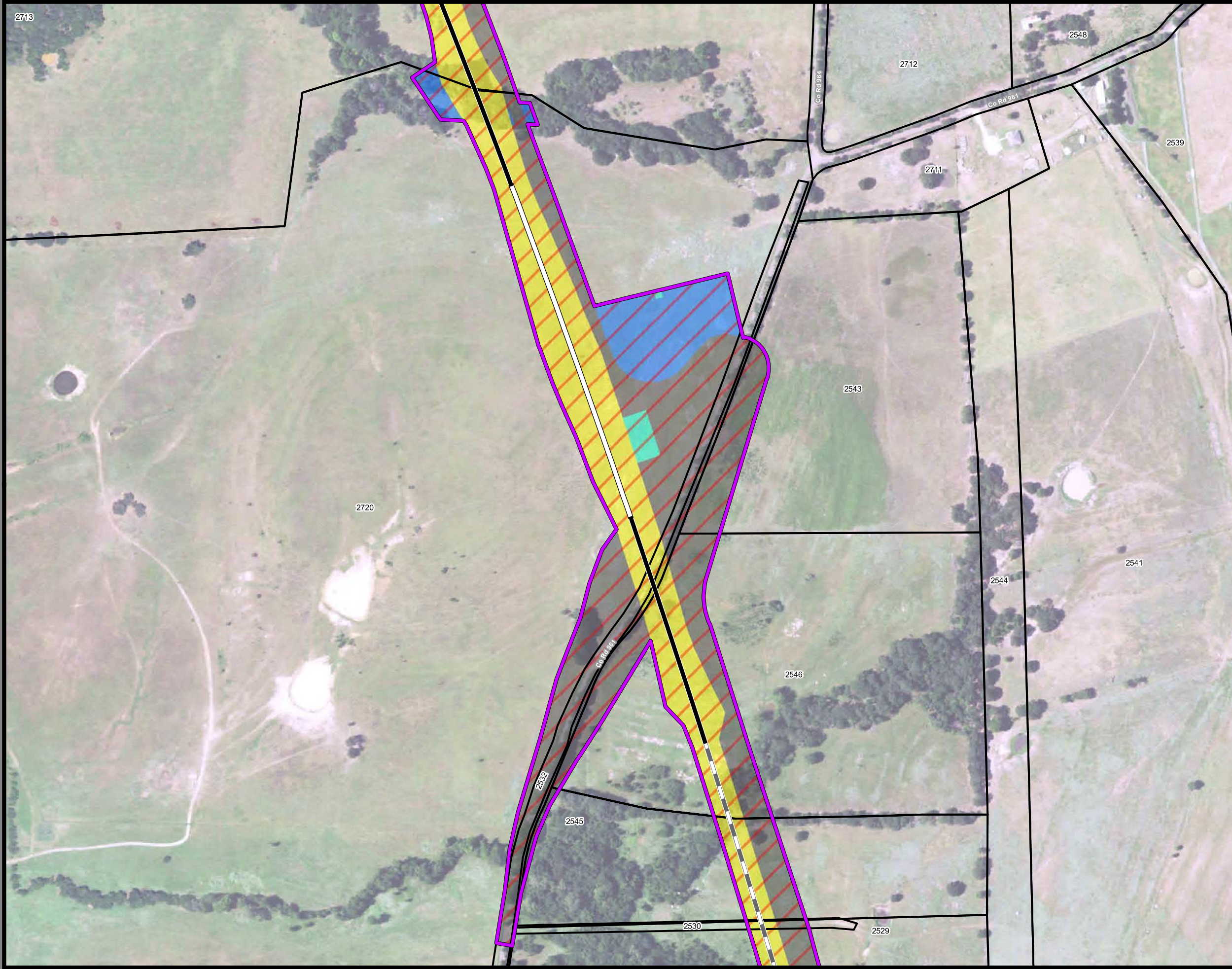
| | |
|---|--|
| Track Configuration | Limits of Disturbance by Discipline |
| — Viaduct | Yellow: Rail |
| — Embankment | Grey: Highway |
| — Cut | Pink: Train Maintenance Facility |
| Limits of Disturbance by Segment | Brown: Maintenance of Way Facility |
| Green: Segment 1 | Cyan: Systems* |
| Pink: Segment 2A | Orange: Utilities |
| Yellow: Segment 2B | Blue: Hydro/Drainage |
| Cyan: Segment 3A | Green: Station |
| Orange: Segment 3B | Purple: Structures |
| Blue: Segment 3C | Light Pink: Temporary Construction |
| Purple: Segment 4 | |
| Green: Segment 5 | |
| Limits of Disturbance by Impact Type | |
| Red diagonal lines: Permanent | |
| Green diagonal lines: Temporary | |
| — Railroad | |
| — Property Boundary | |
| — County Boundary | |

Property ID -This is a unique identifier that corresponds with the Property identification number.

*Systems data includes associated systems and facilities for the HSR, such as ATP, communication systems, SP, SSP and TPSS.

Data Sources: Parcel Data - Contract Land Staff - April 26, 2017
Aerial Imagery: USDA NAIP 2014





**Dallas to Houston
High-Speed Rail Project**
Project Footprint
Segment 4
Sheet 326 of 536

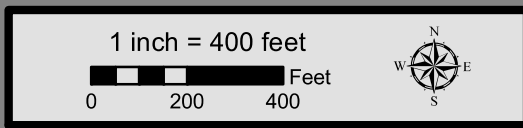
Legend

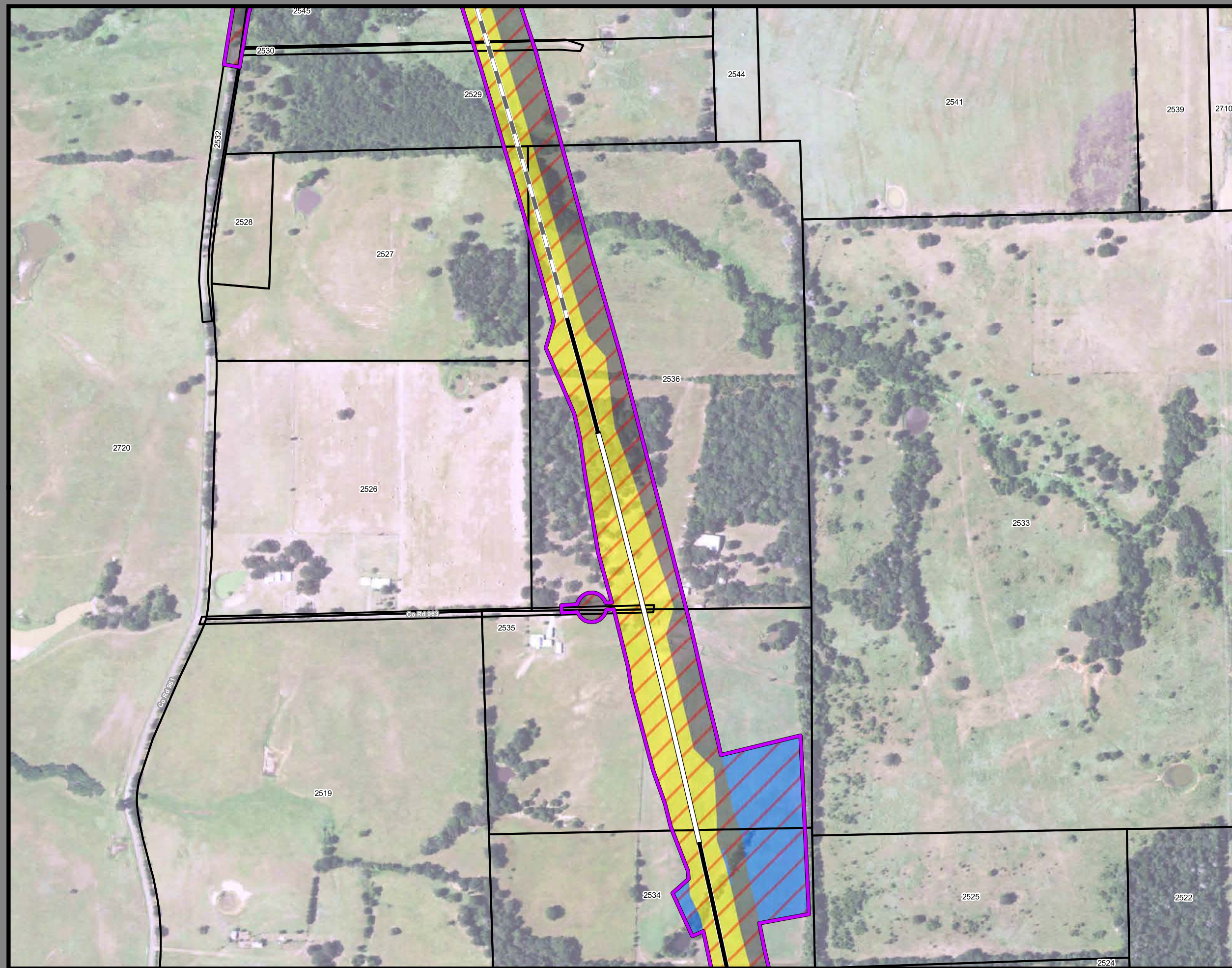
| | |
|---|--|
| Track Configuration | Limits of Disturbance by Discipline |
| — Viaduct | Yellow: Rail |
| — Embankment | Grey: Highway |
| — Cut | Pink: Train Maintenance Facility |
| Limits of Disturbance by Segment | Brown: Maintenance of Way Facility |
| Green: Segment 1 | Cyan: Systems* |
| Pink: Segment 2A | Orange: Utilities |
| Yellow: Segment 2B | Blue: Hydro/Drainage |
| Cyan: Segment 3A | Green: Station |
| Orange: Segment 3B | Purple: Structures |
| Blue: Segment 3C | Light Purple: Temporary Construction |
| Purple: Segment 4 | |
| Light Green: Segment 5 | |
| Limits of Disturbance by Impact Type | |
| Red Diagonal Lines: Permanent | |
| Green Diagonal Lines: Temporary | |
| — Railroad | |
| — Property Boundary | |
| — County Boundary | |

Property ID -This is a unique identifier that corresponds with the Property identification number.

*Systems data includes associated systems and facilities for the HSR, such as ATP, communication systems, SP, SSP and TPSS.

Data Sources: Parcel Data - Contract Land Staff - April 26, 2017
Aerial Imagery: USDA NAIP 2014





**Dallas to Houston
High-Speed Rail Project**
Project Footprint
Segment 4
Sheet 327 of 536

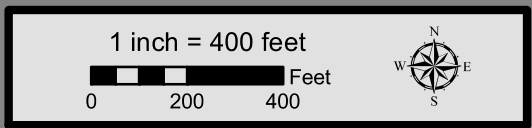
Legend

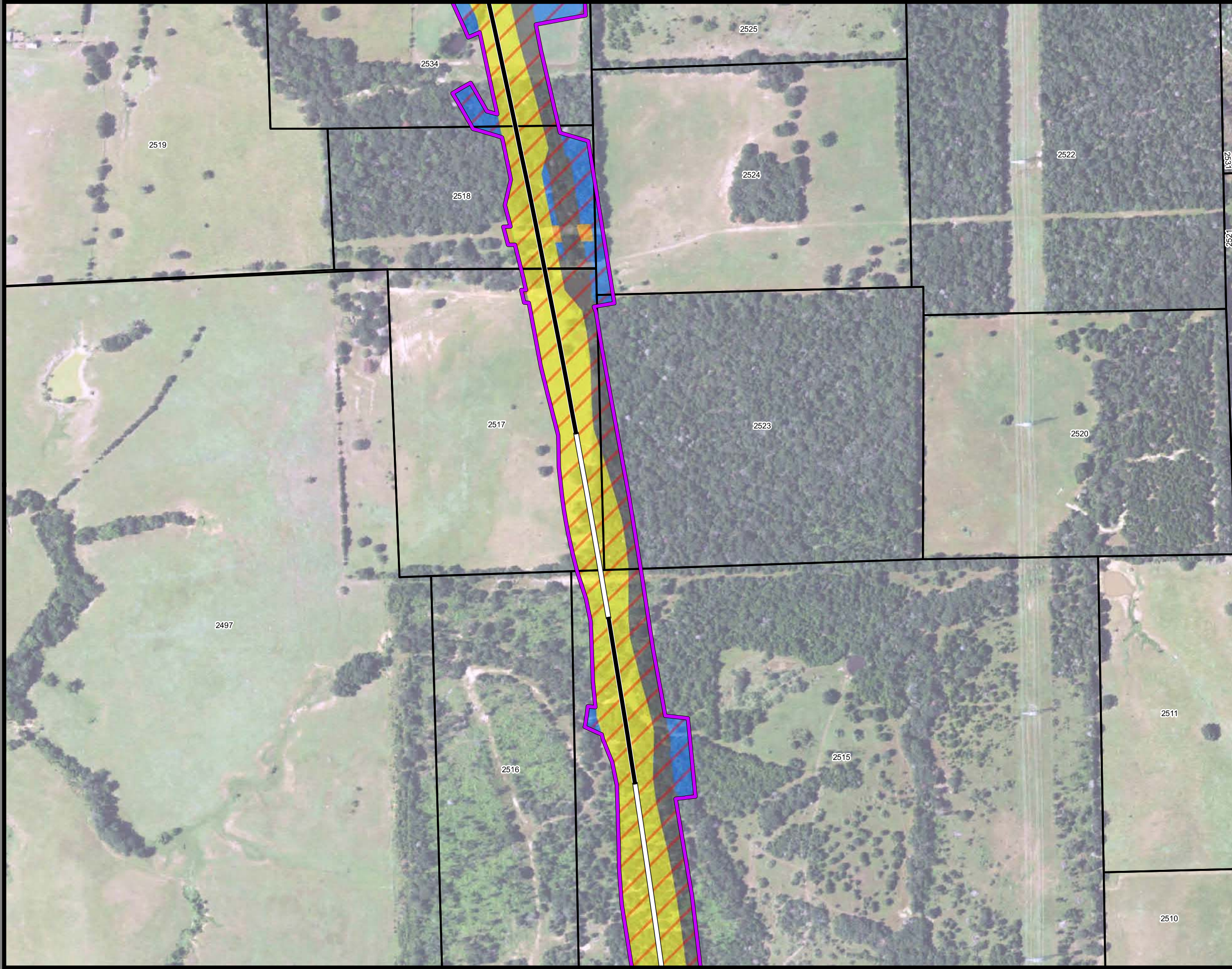
| | |
|---|--|
| Track Configuration | Limits of Disturbance by Discipline |
| — Viaduct | Yellow Rail |
| — Embankment | Grey Highway |
| — Cut | Pink Train Maintenance Facility |
| Limits of Disturbance by Segment | Brown Maintenance of Way Facility |
| Green Segment 1 | Cyan Systems* |
| Pink Segment 2A | Orange Utilities |
| Yellow Segment 2B | Blue Hydro/Drainage |
| Cyan Segment 3A | Green Station |
| Orange Segment 3B | Purple Structures |
| Blue Segment 3C | Light Pink Temporary Construction |
| Purple Segment 4 | |
| Light Green Segment 5 | |
| Limits of Disturbance by Impact Type | |
| Red/White Hatched Permanent | |
| Green/White Hatched Temporary | |
| Black Railroad | |
| Black Property Boundary | |
| Grey County Boundary | |

Property ID -This is a unique identifier that corresponds with the Property identification number.

*Systems data includes associated systems and facilities for the HSR, such as ATP, communication systems, SP, SSP and TPSS.

Data Sources: Parcel Data - Contract Land Staff - April 26, 2017
Aerial Imagery: USDA NAIP 2014





**Dallas to Houston
High-Speed Rail Project
Project Footprint
Segment 4
Sheet 328 of 536**

Legend

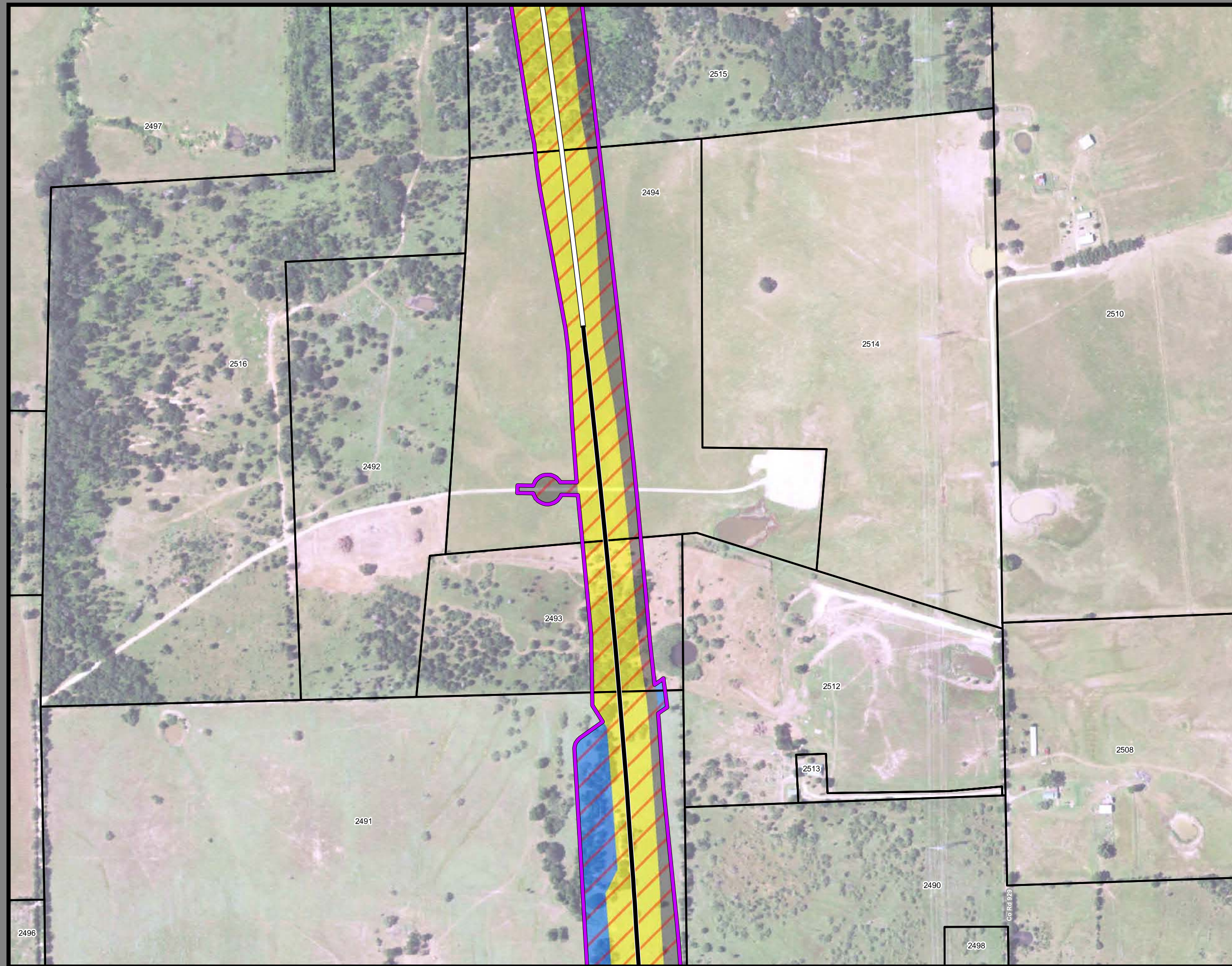
| | |
|---|--|
| Track Configuration | Limits of Disturbance by Discipline |
| — Viaduct | Yellow: Rail |
| — Embankment | Grey: Highway |
| — Cut | Pink: Train Maintenance Facility |
| Limits of Disturbance by Segment | Brown: Maintenance of Way Facility |
| Green: Segment 1 | Cyan: Systems* |
| Pink: Segment 2A | Orange: Utilities |
| Yellow: Segment 2B | Blue: Hydro/Drainage |
| Cyan: Segment 3A | Green: Station |
| Orange: Segment 3B | Purple: Structures |
| Blue: Segment 3C | Light Pink: Temporary Construction |
| Purple: Segment 4 | |
| Green: Segment 5 | |
| Limits of Disturbance by Impact Type | |
| Red Diagonal: Permanent | |
| Green Diagonal: Temporary | |
| — Railroad | |
| — Property Boundary | |
| — County Boundary | |

Property ID -This is a unique identifier that corresponds with the Property identification number.

*Systems data includes associated systems and facilities for the HSR, such as ATP, communication systems, SP, SSP and TPSS.

Data Sources: Parcel Data - Contract Land Staff - April 26, 2017
Aerial Imagery: USDA NAIP 2014





**Dallas to Houston
High-Speed Rail Project
Project Footprint
Segment 4
Sheet 329 of 536**

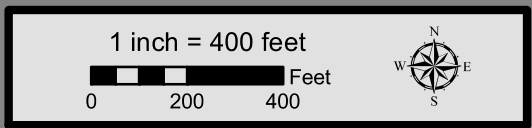
Legend

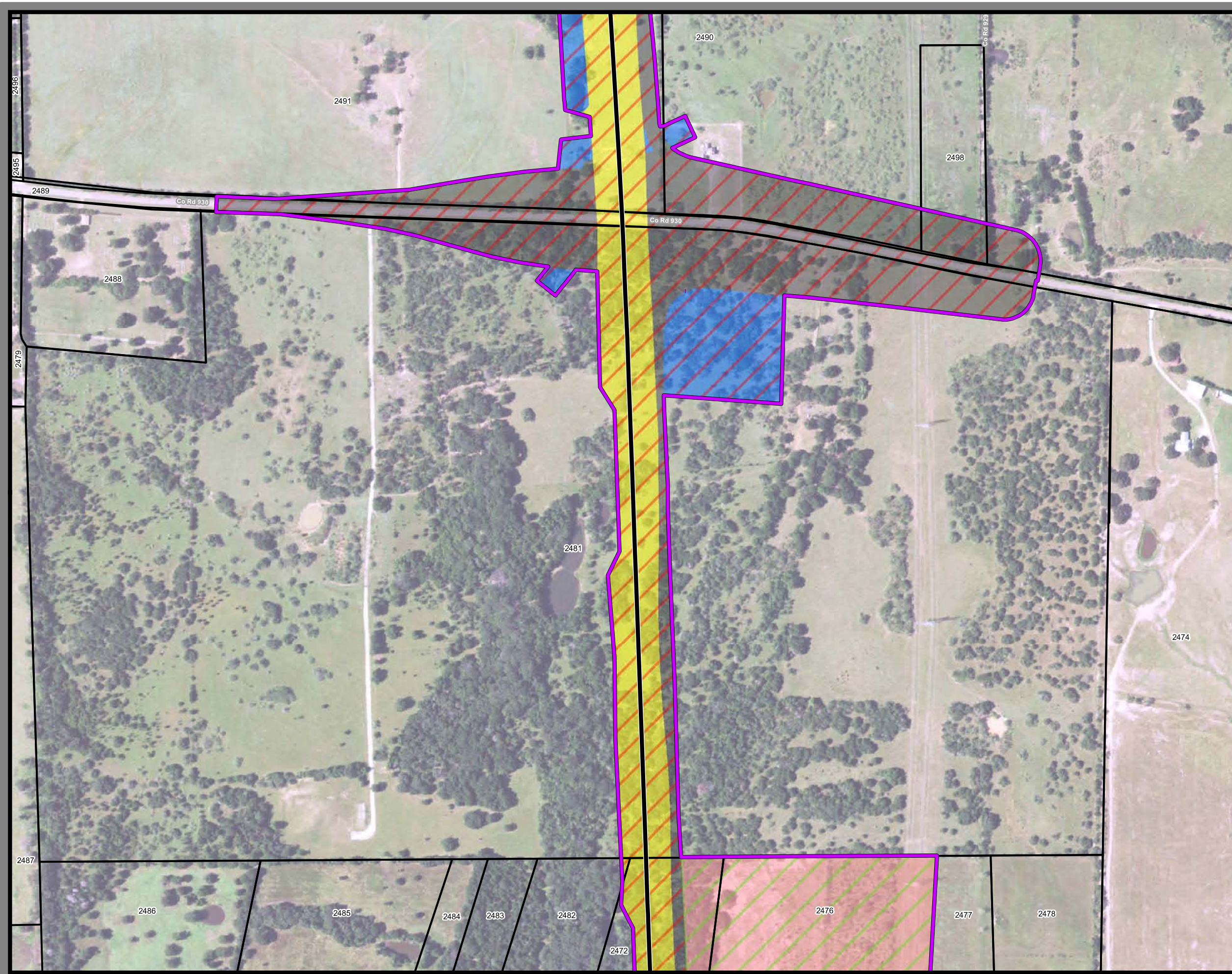
| | |
|---|--|
| Track Configuration | Limits of Disturbance by Discipline |
| — Viaduct | Yellow: Rail |
| — Embankment | Grey: Highway |
| — Cut | Pink: Train Maintenance Facility |
| Limits of Disturbance by Segment | Brown: Maintenance of Way Facility |
| Green: Segment 1 | Cyan: Systems* |
| Pink: Segment 2A | Orange: Utilities |
| Yellow: Segment 2B | Blue: Hydro/Drainage |
| Cyan: Segment 3A | Green: Station |
| Orange: Segment 3B | Purple: Structures |
| Blue: Segment 3C | Light Pink: Temporary Construction |
| Dark Blue: Segment 4 | |
| Light Green: Segment 5 | |
| Limits of Disturbance by Impact Type | |
| Red Diagonal Hatching: Permanent | |
| Green Diagonal Hatching: Temporary | |
| Black Line with Cross-Ticks: Railroad | |
| Black Outline: Property Boundary | |
| Grey Outline: County Boundary | |

Property ID -This is a unique identifier that corresponds with the Property identification number.

*Systems data includes associated systems and facilities for the HSR, such as ATP, communication systems, SP, SSP and TPSS.

Data Sources: Parcel Data - Contract Land Staff - April 26, 2017
Aerial Imagery: USDA NAIP 2014





**Dallas to Houston
High-Speed Rail Project
Project Footprint
Segment 4
Sheet 330 of 536**

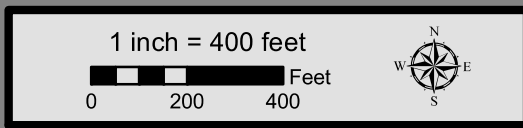
Legend

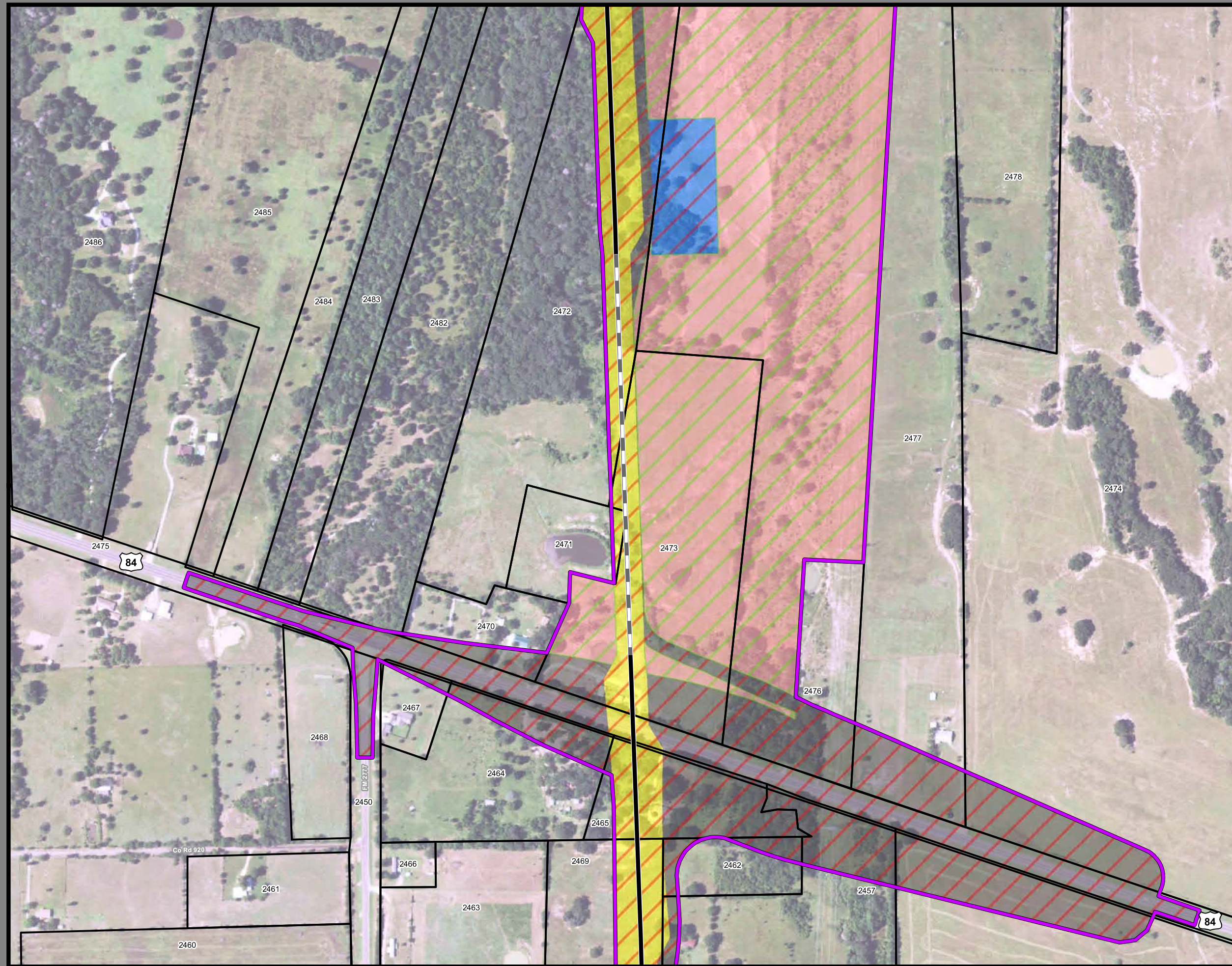
| | |
|---|--|
| Track Configuration | Limits of Disturbance by Discipline |
| — Viaduct | Yellow Rail |
| — Embankment | Grey Highway |
| — Cut | Pink Train Maintenance Facility |
| Limits of Disturbance by Segment | Brown Maintenance of Way Facility |
| Green Segment 1 | Cyan Systems* |
| Pink Segment 2A | Orange Utilities |
| Yellow Segment 2B | Blue Hydro/Drainage |
| Cyan Segment 3A | Green Station |
| Orange Segment 3B | Purple Structures |
| Blue Segment 3C | Pink Temporary Construction |
| Purple Segment 4 | |
| Green Segment 5 | |
| Limits of Disturbance by Impact Type | |
| Red hatched Permanent | |
| Green hatched Temporary | |
| Black Railroad | |
| Black Property Boundary | |
| Grey County Boundary | |

Property ID -This is a unique identifier that corresponds with the Property identification number.

*Systems data includes associated systems and facilities for the HSR, such as ATP, communication systems, SP, SSP and TPSS.

Data Sources: Parcel Data - Contract Land Staff - April 26, 2017
Aerial Imagery: USDA NAIP 2014





**Dallas to Houston
High-Speed Rail Project
Project Footprint
Segment 4
Sheet 331 of 536**

Legend

| | |
|---|--|
| Track Configuration | Limits of Disturbance by Discipline |
| — Viaduct | Yellow: Rail |
| — Embankment | Grey: Highway |
| — Cut | Pink: Train Maintenance Facility |
| Limits of Disturbance by Segment | Brown: Maintenance of Way Facility |
| Green: Segment 1 | Cyan: Systems* |
| Pink: Segment 2A | Orange: Utilities |
| Yellow: Segment 2B | Blue: Hydro/Drainage |
| Cyan: Segment 3A | Green: Station |
| Orange: Segment 3B | Purple: Structures |
| Blue: Segment 3C | Light Pink: Temporary Construction |
| Purple: Segment 4 | |
| Green: Segment 5 | |
| Limits of Disturbance by Impact Type | |
| Red Diagonal Lines: Permanent | |
| Green Diagonal Lines: Temporary | |
| — Railroad | |
| — Property Boundary | |
| — County Boundary | |

Property ID -This is a unique identifier that corresponds with the Property identification number.

*Systems data includes associated systems and facilities for the HSR, such as ATP, communication systems, SP, SSP and TPSS.

Data Sources: Parcel Data - Contract Land Staff - April 26, 2017
Aerial Imagery: USDA NAIP 2014

