

**Dallas to Houston
High-Speed Rail Project
Natural Resources
Segment 3A
Sheet 44 of 257**

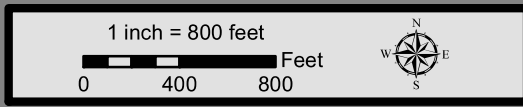
Legend

<p>Limits of Disturbance</p> <ul style="list-style-type: none"> Segment 1 Segment 2A Segment 2B Segment 3A Segment 3B Segment 3C Segment 4 Segment 5 <p>Track Configuration</p> <ul style="list-style-type: none"> Viaduct Embankment Cut Half Mile Buffer City Boundary County Boundary Railroad Municipal Setting Designation (MSD) <p>Potential Habitat</p> <ul style="list-style-type: none"> Houston Toad Large-fruited Sand Verbena Navasota Ladies'-tresses Endangered Species Threatened Species U.S. Army Corps of Engineers (USACE) Project Area Watershed (HUC 12) Boundary Public Water Supply Groundwater Well 	<ul style="list-style-type: none"> Impaired Waters with Total Maximum Daily Load (TMDL) Impaired Waters <p>Federal Emergency Management Agency (FEMA) Flood Zone</p> <ul style="list-style-type: none"> A - 1% AE - 1% AO - 1% X - 0.2% <p>Field-Collected Data</p> <ul style="list-style-type: none"> Perennial Stream/River Intermittent Stream/River Ephemeral Stream/River Other Stream/River Lake/Pond Emergent Wetland Forested Wetland Scrub/Shrub Wetland <p>National Hydrography Dataset (NHD)</p> <ul style="list-style-type: none"> Perennial Stream/River Intermittent Stream/River Artificial Stream/Canal Lake/Pond Reservoir Swamp/Marsh <p>National Wetlands Inventory (NWI)</p> <ul style="list-style-type: none"> Freshwater Emergent Wetland Freshwater Forested/Shrub Wetland Other
---	--

This Sheet only depicts Segment 3A; Segments 3B & 3C are also located in this same area and can be referenced on Sheets 63 & 82.

*Floodplains in Freestone and Madison Counties digitized from U.S. Dept of Housing and Urban Development 1978 and 1991 Flood Hazard Boundary Maps due to lack of digitally mapped FEMA floodplains.

Data Sources: County Boundaries - U.S. Census TIGER 2015; City Boundaries - TxDOT 2013; MSD - TCEQ 2015; USACE Project Areas - USACE 2014; Public Water Supply/Impaired Waters - EPA 2016; Groundwater Wells - TWDB 2015; NHD/HUC12 - USGS 2016; Reservoirs - TWDB 2014; NWI - USFWS 2016; Floodplains - FEMA 2016; Endangered/Threatened Species - TPWD TXNDD Element of Occurrence Records (EOR) 2017; ESRI World Street Map
Aerial Imagery: USDA NAIP 2014





**Dallas to Houston
High-Speed Rail Project
Natural Resources
Segment 3A
Sheet 45 of 257**

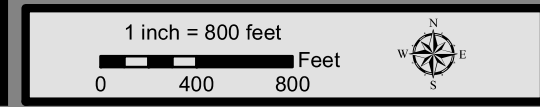
Legend

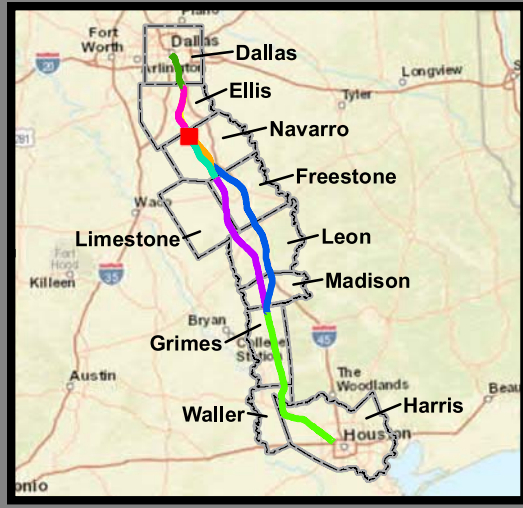
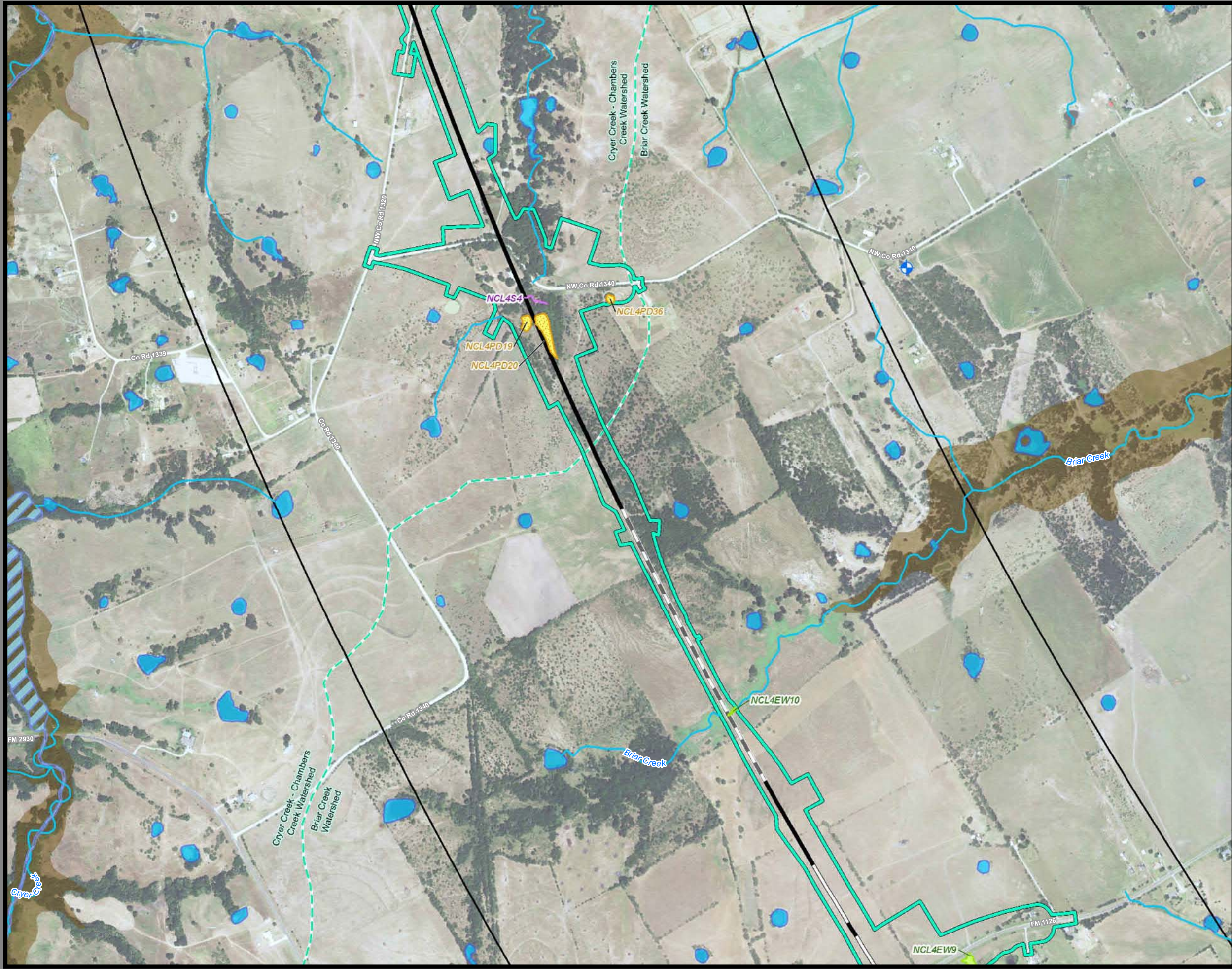
<p>Limits of Disturbance</p> <ul style="list-style-type: none"> Segment 1 Segment 2A Segment 2B Segment 3A Segment 3B Segment 3C Segment 4 Segment 5 <p>Track Configuration</p> <ul style="list-style-type: none"> Viaduct Embankment Cut Half Mile Buffer City Boundary County Boundary Railroad Municipal Setting Designation (MSD) <p>Potential Habitat</p> <ul style="list-style-type: none"> Houston Toad Large-fruited Sand Verbena Navasota Ladies'-tresses Endangered Species Threatened Species U.S. Army Corps of Engineers (USACE) Project Area Watershed (HUC 12) Boundary Public Water Supply Groundwater Well 	<ul style="list-style-type: none"> Impaired Waters with Total Maximum Daily Load (TMDL) Impaired Waters <p>Federal Emergency Management Agency (FEMA) Flood Zone</p> <ul style="list-style-type: none"> A - 1% AE - 1% AO - 1% X - 0.2% <p>Field-Collected Data</p> <ul style="list-style-type: none"> Perennial Stream/River Intermittent Stream/River Ephemeral Stream/River Other Stream/River Lake/Pond Emergent Wetland Forested Wetland Scrub/Shrub Wetland <p>National Hydrography Dataset (NHD)</p> <ul style="list-style-type: none"> Perennial Stream/River Intermittent Stream/River Artificial Stream/Canal Lake/Pond Reservoir Swamp/Marsh <p>National Wetlands Inventory (NWI)</p> <ul style="list-style-type: none"> Freshwater Emergent Wetland Freshwater Forested/Shrub Wetland Other
---	--

This Sheet only depicts Segment 3A; Segments 3B & 3C are also located in this same area and can be referenced on Sheets 64 & 83.

*Floodplains in Freestone and Madison Counties digitized from U.S. Dept of Housing and Urban Development 1978 and 1991 Flood Hazard Boundary Maps due to lack of digitally mapped FEMA floodplains.

Data Sources: County Boundaries - U.S. Census TIGER 2015; City Boundaries - TxDOT 2013; MSD - TCEQ 2015; USACE Project Areas - USACE 2014; Public Water Supply/Impaired Waters - EPA 2016; Groundwater Wells - TWDB 2015; NHD/HUC12 - USGS 2016; Reservoirs - TWDB 2014; NWI - USFWS 2016; Floodplains - FEMA 2016; Endangered/Threatened Species - TPWD TXNDD Element of Occurrence Records (EOR) 2017; ESRI World Street Map
Aerial Imagery: USDA NAIP 2014





**Dallas to Houston
High-Speed Rail Project
Natural Resources
Segment 3A
Sheet 46 of 257**

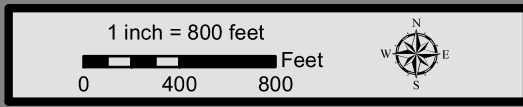
Legend

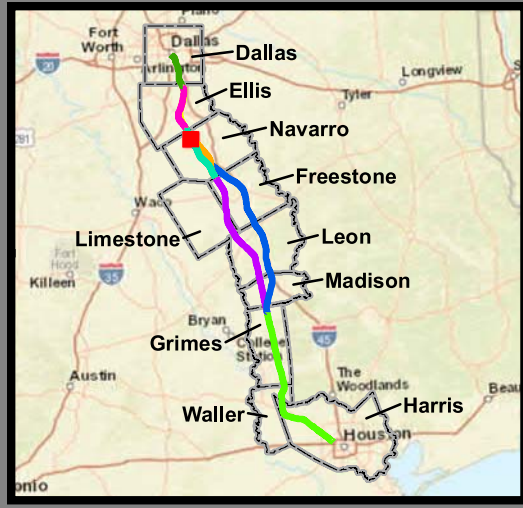
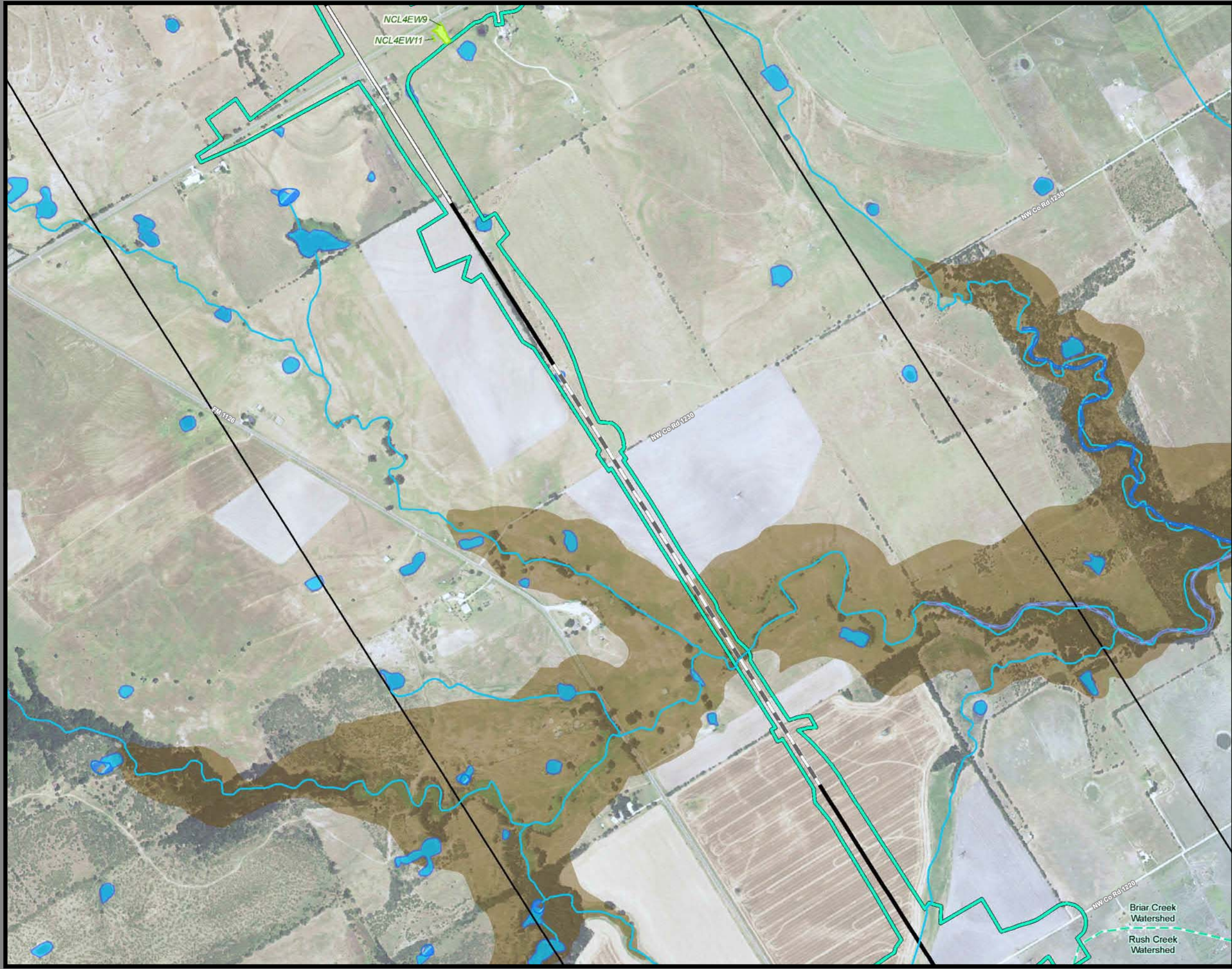
<p>Limits of Disturbance</p> <ul style="list-style-type: none"> Segment 1 Segment 2A Segment 2B Segment 3A Segment 3B Segment 3C Segment 4 Segment 5 <p>Track Configuration</p> <ul style="list-style-type: none"> Viaduct Embankment Cut Half Mile Buffer City Boundary County Boundary Railroad Municipal Setting Designation (MSD) <p>Potential Habitat</p> <ul style="list-style-type: none"> Houston Toad Large-fruited Sand Verbena Navasota Ladies'-tresses Endangered Species Threatened Species U.S. Army Corps of Engineers (USACE) Project Area Watershed (HUC 12) Boundary Public Water Supply Groundwater Well 	<ul style="list-style-type: none"> Impaired Waters with Total Maximum Daily Load (TMDL) Impaired Waters <p>Federal Emergency Management Agency (FEMA) Flood Zone</p> <ul style="list-style-type: none"> A - 1% AE - 1% AO - 1% X - 0.2% <p>Field-Collected Data</p> <ul style="list-style-type: none"> Perennial Stream/River Intermittent Stream/River Ephemeral Stream/River Other Stream/River Lake/Pond Emergent Wetland Forested Wetland Scrub/Shrub Wetland <p>National Hydrography Dataset (NHD)</p> <ul style="list-style-type: none"> Perennial Stream/River Intermittent Stream/River Artificial Stream/Canal Lake/Pond Reservoir Swamp/Marsh <p>National Wetlands Inventory (NWI)</p> <ul style="list-style-type: none"> Freshwater Emergent Wetland Freshwater Forested/Shrub Wetland Other
---	--

This Sheet only depicts Segment 3A; Segments 3B & 3C are also located in this same area and can be referenced on Sheets 65 & 84.

*Floodplains in Freestone and Madison Counties digitized from U.S. Dept of Housing and Urban Development 1978 and 1991 Flood Hazard Boundary Maps due to lack of digitally mapped FEMA floodplains.

Data Sources: County Boundaries - U.S. Census TIGER 2015; City Boundaries - TxDOT 2013; MSD - TCEQ 2015; USACE Project Areas - USACE 2014; Public Water Supply/Impaired Waters - EPA 2016; Groundwater Wells - TWDB 2015; NHD/HUC12 - USGS 2016; Reservoirs - TWDB 2014; NWI - USFWS 2016; Floodplains - FEMA 2016; Endangered/Threatened Species - TPWD TXNDD Element of Occurrence Records (EOR) 2017; ESRI World Street Map
Aerial Imagery: USDA NAIP 2014





**Dallas to Houston
High-Speed Rail Project
Natural Resources
Segment 3A
Sheet 47 of 257**

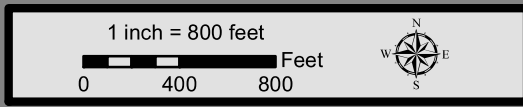
Legend

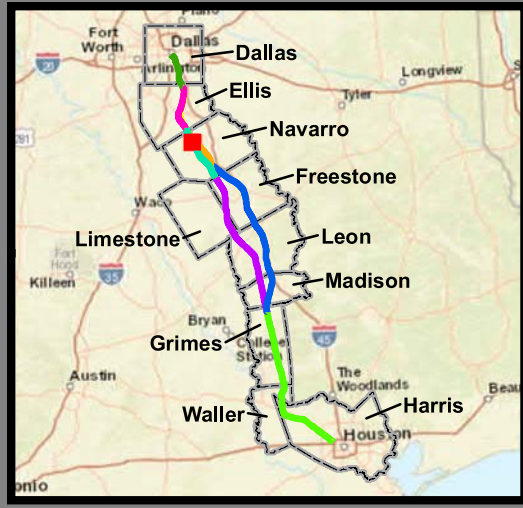
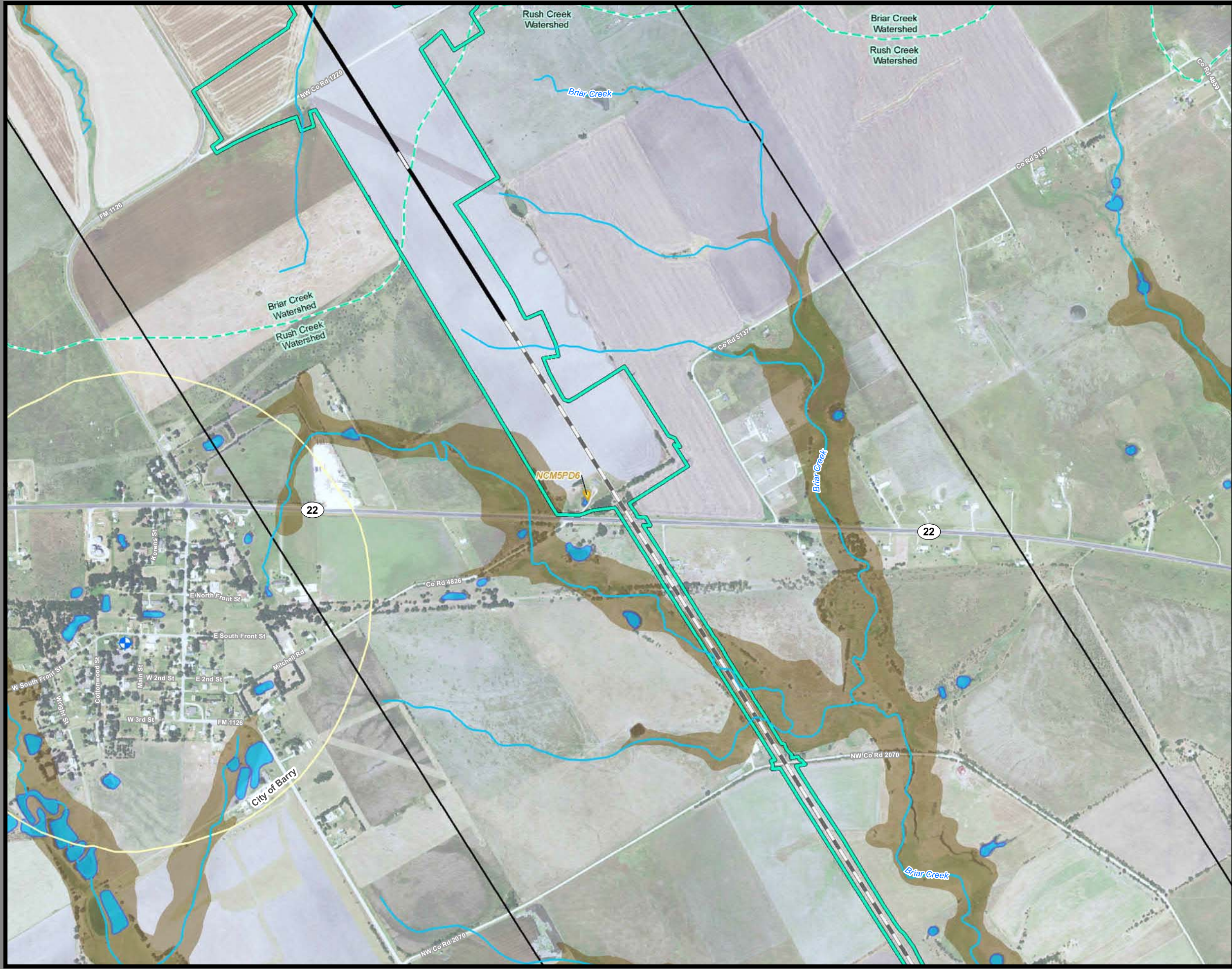
<p>Limits of Disturbance</p> <ul style="list-style-type: none"> Segment 1 Segment 2A Segment 2B Segment 3A Segment 3B Segment 3C Segment 4 Segment 5 <p>Track Configuration</p> <ul style="list-style-type: none"> Viaduct Embankment Cut Half Mile Buffer City Boundary County Boundary Railroad Municipal Setting Designation (MSD) <p>Potential Habitat</p> <ul style="list-style-type: none"> Houston Toad Large-fruited Sand Verbena Navasota Ladies'-tresses Endangered Species Threatened Species U.S. Army Corps of Engineers (USACE) Project Area Watershed (HUC 12) Boundary Public Water Supply Groundwater Well 	<ul style="list-style-type: none"> Impaired Waters with Total Maximum Daily Load (TMDL) Impaired Waters <p>Federal Emergency Management Agency (FEMA) Flood Zone</p> <ul style="list-style-type: none"> A - 1% AE - 1% AO - 1% X - 0.2% <p>Field-Collected Data</p> <ul style="list-style-type: none"> Perennial Stream/River Intermittent Stream/River Ephemeral Stream/River Other Stream/River Lake/Pond Emergent Wetland Forested Wetland Scrub/Shrub Wetland <p>National Hydrography Dataset (NHD)</p> <ul style="list-style-type: none"> Perennial Stream/River Intermittent Stream/River Artificial Stream/Canal Lake/Pond Reservoir Swamp/Marsh <p>National Wetlands Inventory (NWI)</p> <ul style="list-style-type: none"> Freshwater Emergent Wetland Freshwater Forested/Shrub Wetland Other
---	--

This Sheet only depicts Segment 3A; Segments 3B & 3C are also located in this same area and can be referenced on Sheets 66 & 85.

*Floodplains in Freestone and Madison Counties digitized from U.S. Dept of Housing and Urban Development 1978 and 1991 Flood Hazard Boundary Maps due to lack of digitally mapped FEMA floodplains.

Data Sources: County Boundaries - U.S. Census TIGER 2015; City Boundaries - TxDOT 2013; MSD - TCEQ 2015; USACE Project Areas - USACE 2014; Public Water Supply/Impaired Waters - EPA 2016; Groundwater Wells - TWDB 2015; NHD/HUC12 - USGS 2016; Reservoirs - TWDB 2014; NWI - USFWS 2016; Floodplains - FEMA 2016; Endangered/Threatened Species - TPWD TXNDD Element of Occurrence Records (EOR) 2017; ESRI World Street Map
Aerial Imagery: USDA NAIP 2014





**Dallas to Houston
High-Speed Rail Project
Natural Resources
Segment 3A
Sheet 48 of 257**

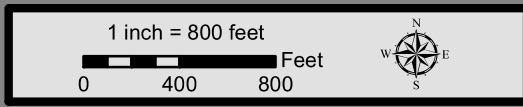
Legend

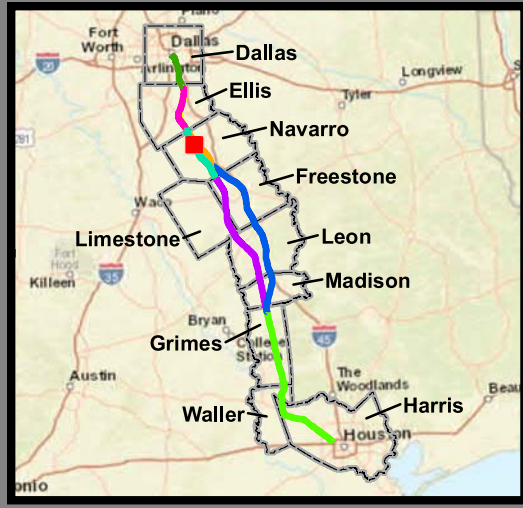
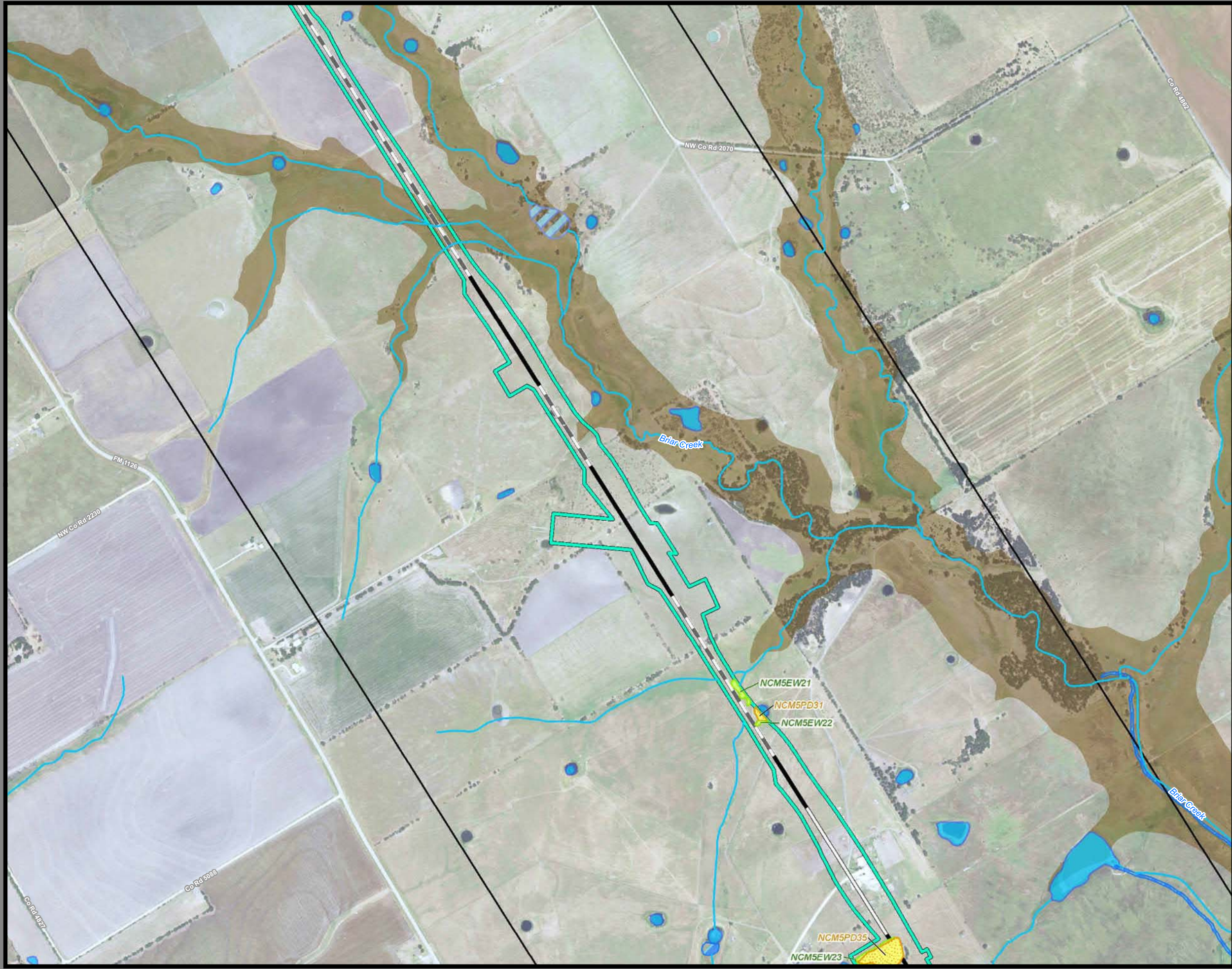
<p>Limits of Disturbance</p> <ul style="list-style-type: none"> Segment 1 Segment 2A Segment 2B Segment 3A Segment 3B Segment 3C Segment 4 Segment 5 <p>Track Configuration</p> <ul style="list-style-type: none"> Viaduct Embankment Cut Half Mile Buffer City Boundary County Boundary Railroad Municipal Setting Designation (MSD) <p>Potential Habitat</p> <ul style="list-style-type: none"> Houston Toad Large-fruited Sand Verbena Navasota Ladies'-tresses Endangered Species Threatened Species U.S. Army Corps of Engineers (USACE) Project Area Watershed (HUC 12) Boundary Public Water Supply Groundwater Well 	<ul style="list-style-type: none"> Impaired Waters with Total Maximum Daily Load (TMDL) Impaired Waters <p>Federal Emergency Management Agency (FEMA) Flood Zone</p> <ul style="list-style-type: none"> A - 1% AE - 1% AO - 1% X - 0.2% <p>Field-Collected Data</p> <ul style="list-style-type: none"> Perennial Stream/River Intermittent Stream/River Ephemeral Stream/River Other Stream/River Lake/Pond Emergent Wetland Forested Wetland Scrub/Shrub Wetland <p>National Hydrography Dataset (NHD)</p> <ul style="list-style-type: none"> Perennial Stream/River Intermittent Stream/River Artificial Stream/Canal Lake/Pond Reservoir Swamp/Marsh <p>National Wetlands Inventory (NWI)</p> <ul style="list-style-type: none"> Freshwater Emergent Wetland Freshwater Forested/Shrub Wetland Other
---	--

This Sheet only depicts Segment 3A; Segment 3C is also located in this same area and can be referenced on Sheet 86.

*Floodplains in Freestone and Madison Counties digitized from U.S. Dept of Housing and Urban Development 1978 and 1991 Flood Hazard Boundary Maps due to lack of digitally mapped FEMA floodplains.

Data Sources: County Boundaries - U.S. Census TIGER 2015; City Boundaries - TxDOT 2013; MSD - TCEQ 2015; USACE Project Areas - USACE 2014; Public Water Supply/Impaired Waters - EPA 2016; Groundwater Wells - TWDB 2015; NHD/HUC12 - USGS 2016; Reservoirs - TWDB 2014; NWI - USFWS 2016; Floodplains - FEMA 2016; Endangered/Threatened Species - TPWD TXNDD Element of Occurrence Records (EOR) 2017; ESRI World Street Map
Aerial Imagery: USDA NAIP 2014





**Dallas to Houston
High-Speed Rail Project
Natural Resources
Segment 3A
Sheet 49 of 257**

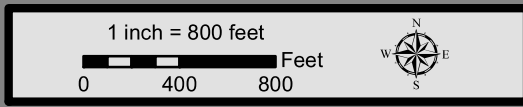
Legend

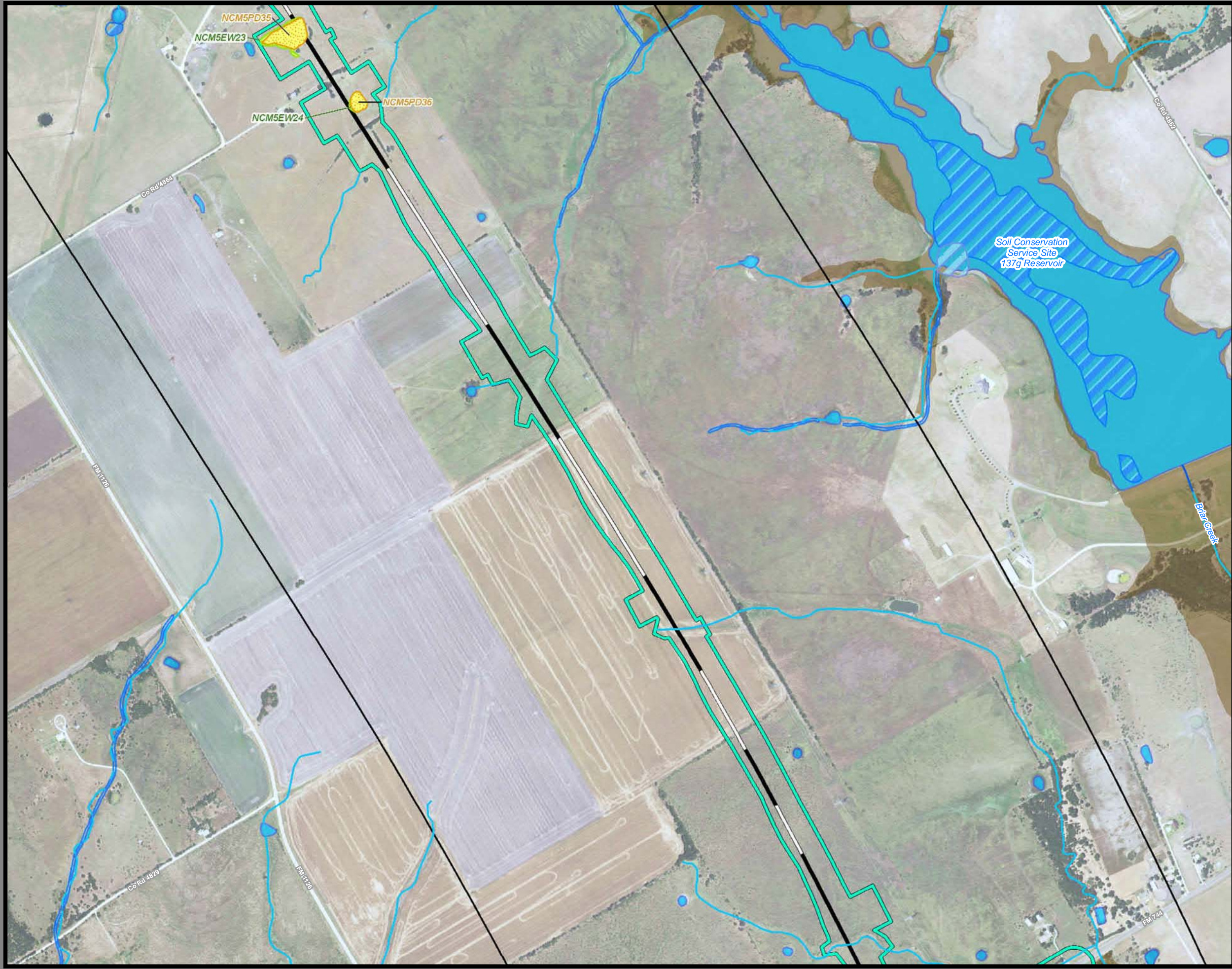
<p>Limits of Disturbance</p> <ul style="list-style-type: none"> Segment 1 Segment 2A Segment 2B Segment 3A Segment 3B Segment 3C Segment 4 Segment 5 <p>Track Configuration</p> <ul style="list-style-type: none"> Viaduct Embankment Cut Half Mile Buffer City Boundary County Boundary Railroad Municipal Setting Designation (MSD) <p>Potential Habitat</p> <ul style="list-style-type: none"> Houston Toad Large-fruited Sand Verbena Navasota Ladies'-tresses Endangered Species Threatened Species U.S. Army Corps of Engineers (USACE) Project Area Watershed (HUC 12) Boundary Public Water Supply Groundwater Well 	<ul style="list-style-type: none"> Impaired Waters with Total Maximum Daily Load (TMDL) Impaired Waters <p>Federal Emergency Management Agency (FEMA) Flood Zone</p> <ul style="list-style-type: none"> A - 1% AE - 1% AO - 1% X - 0.2% <p>Field-Collected Data</p> <ul style="list-style-type: none"> Perennial Stream/River Intermittent Stream/River Ephemeral Stream/River Other Stream/River Lake/Pond Emergent Wetland Forested Wetland Scrub/Shrub Wetland <p>National Hydrography Dataset (NHD)</p> <ul style="list-style-type: none"> Perennial Stream/River Intermittent Stream/River Artificial Stream/Canal Lake/Pond Reservoir Swamp/Marsh <p>National Wetlands Inventory (NWI)</p> <ul style="list-style-type: none"> Freshwater Emergent Wetland Freshwater Forested/Shrub Wetland Other
---	--

This Sheet only depicts Segment 3A; Segment 3C is also located in this same area and can be referenced on Sheet 87.

*Floodplains in Freestone and Madison Counties digitized from U.S. Dept of Housing and Urban Development 1978 and 1991 Flood Hazard Boundary Maps due to lack of digitally mapped FEMA floodplains.

Data Sources: County Boundaries - U.S. Census TIGER 2015; City Boundaries - TxDOT 2013; MSD - TCEQ 2015; USACE Project Areas - USACE 2014; Public Water Supply/Impaired Waters - EPA 2016; Groundwater Wells - TWDB 2015; NHD/HUC12 - USGS 2016; Reservoirs - TWDB 2014; NWI - USFWS 2016; Floodplains - FEMA 2016; Endangered/Threatened Species - TPWD TXNDD Element of Occurrence Records (EOR) 2017; ESRI World Street Map
Aerial Imagery: USDA NAIP 2014





**Dallas to Houston
High-Speed Rail Project
Natural Resources
Segment 3A
Sheet 50 of 257**

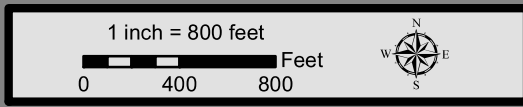
Legend

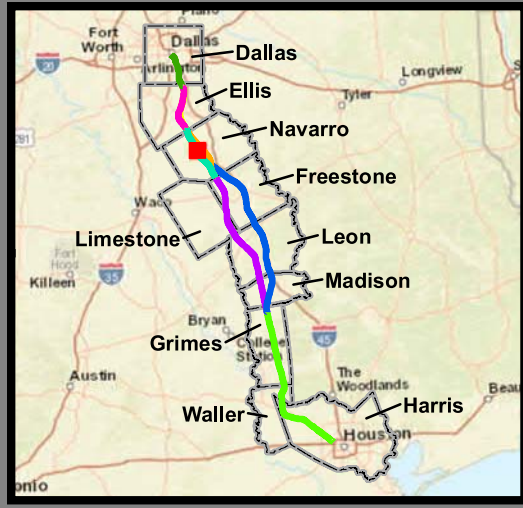
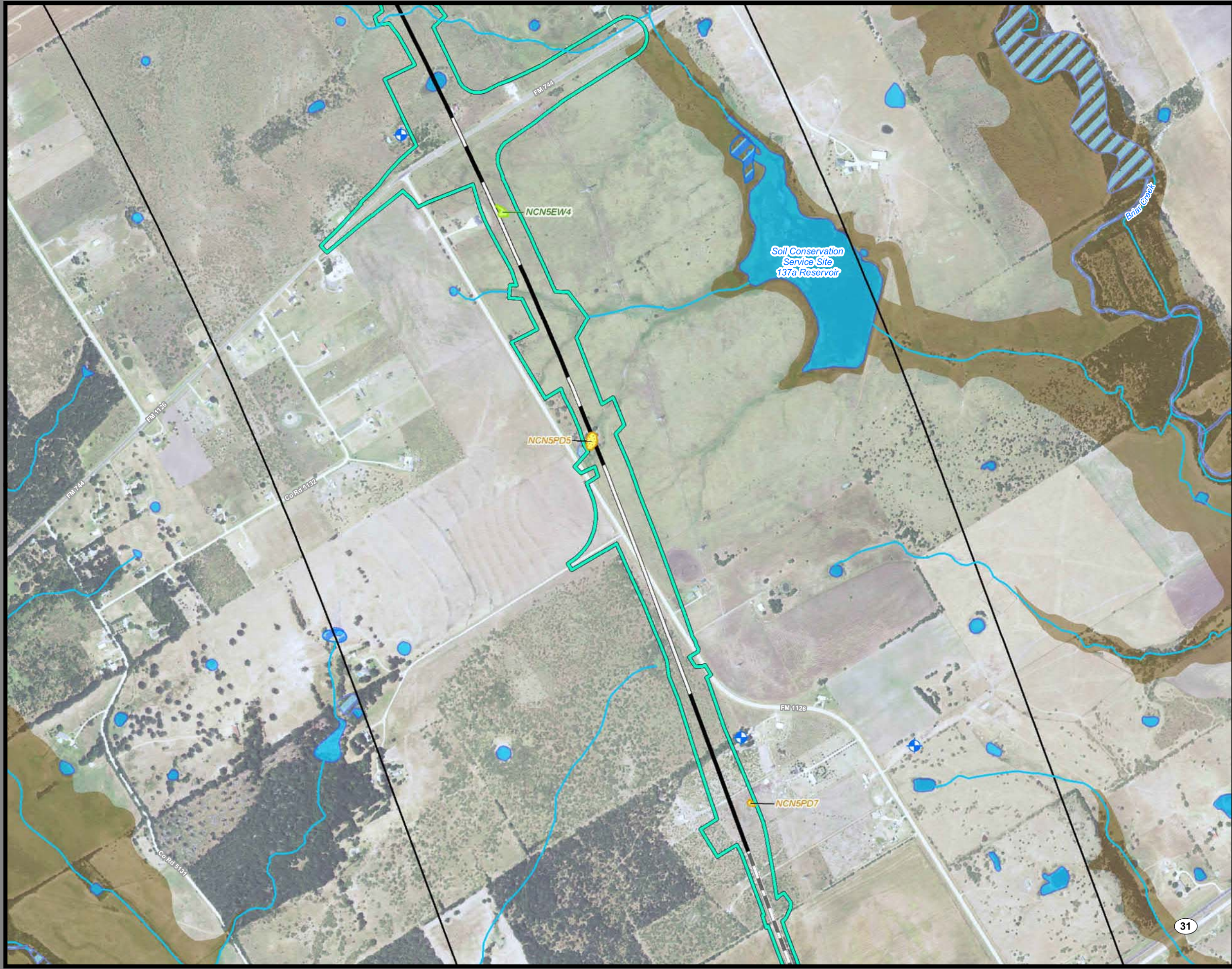
<p>Limits of Disturbance</p> <ul style="list-style-type: none"> Segment 1 Segment 2A Segment 2B Segment 3A Segment 3B Segment 3C Segment 4 Segment 5 <p>Track Configuration</p> <ul style="list-style-type: none"> Viaduct Embankment Cut Half Mile Buffer City Boundary County Boundary Railroad Municipal Setting Designation (MSD) <p>Potential Habitat</p> <ul style="list-style-type: none"> Houston Toad Large-fruited Sand Verbena Navasota Ladies'-tresses Endangered Species Threatened Species U.S. Army Corps of Engineers (USACE) Project Area Watershed (HUC 12) Boundary Public Water Supply Groundwater Well 	<ul style="list-style-type: none"> Impaired Waters with Total Maximum Daily Load (TMDL) Impaired Waters <p>Federal Emergency Management Agency (FEMA) Flood Zone</p> <ul style="list-style-type: none"> A - 1% AE - 1% AO - 1% X - 0.2% <p>Field-Collected Data</p> <ul style="list-style-type: none"> Perennial Stream/River Intermittent Stream/River Ephemeral Stream/River Other Stream/River Lake/Pond Emergent Wetland Forested Wetland Scrub/Shrub Wetland <p>National Hydrography Dataset (NHD)</p> <ul style="list-style-type: none"> Perennial Stream/River Intermittent Stream/River Artificial Stream/Canal Lake/Pond Reservoir Swamp/Marsh <p>National Wetlands Inventory (NWI)</p> <ul style="list-style-type: none"> Freshwater Emergent Wetland Freshwater Forested/Shrub Wetland Other
---	--

This Sheet only depicts Segment 3A; Segment 3C is also located in this same area and can be referenced on Sheet 88.

*Floodplains in Freestone and Madison Counties digitized from U.S. Dept of Housing and Urban Development 1978 and 1991 Flood Hazard Boundary Maps due to lack of digitally mapped FEMA floodplains.

Data Sources: County Boundaries - U.S. Census TIGER 2015; City Boundaries - TxDOT 2013; MSD - TCEQ 2015; USACE Project Areas - USACE 2014; Public Water Supply/Impaired Waters - EPA 2016; Groundwater Wells - TWDB 2015; NHD/HUC12 - USGS 2016; Reservoirs - TWDB 2014; NWI - USFWS 2016; Floodplains - FEMA 2016; Endangered/Threatened Species - TPWD TXNDD Element of Occurrence Records (EOR) 2017; ESRI World Street Map
Aerial Imagery: USDA NAIP 2014





**Dallas to Houston
High-Speed Rail Project
Natural Resources
Segment 3A
Sheet 51 of 257**

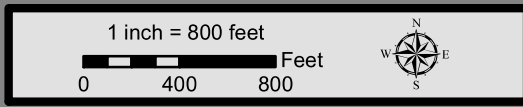
Legend

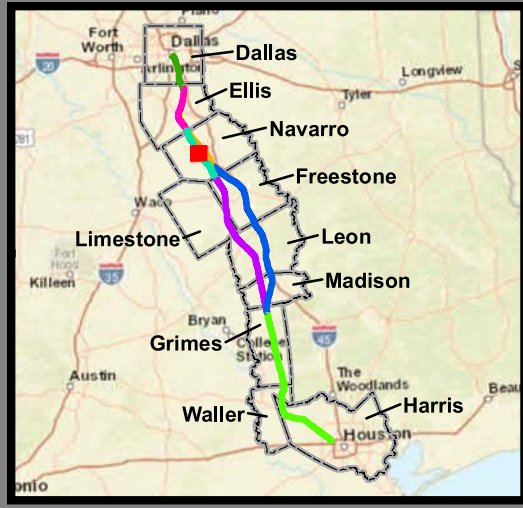
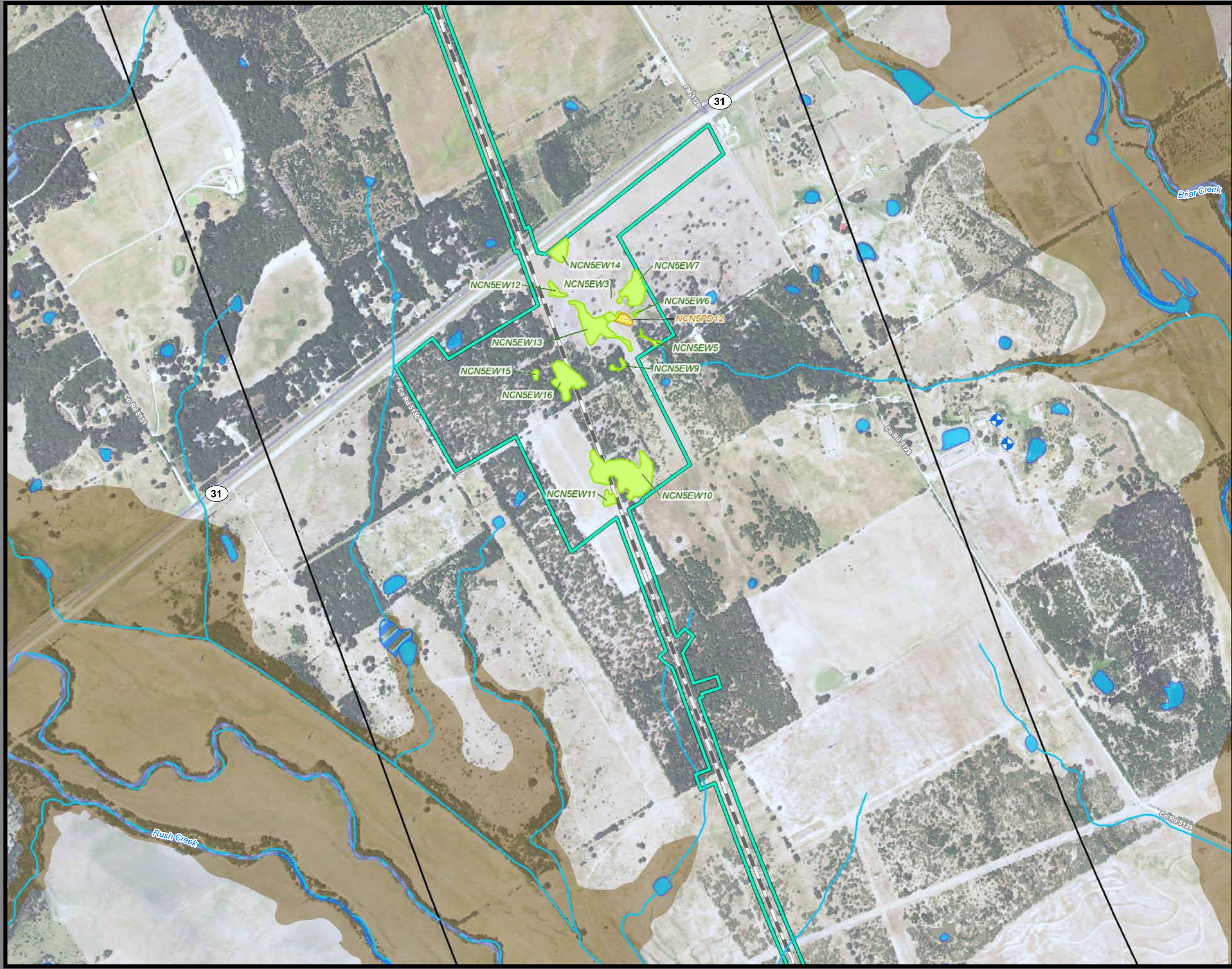
<p>Limits of Disturbance</p> <ul style="list-style-type: none"> Segment 1 Segment 2A Segment 2B Segment 3A Segment 3B Segment 3C Segment 4 Segment 5 <p>Track Configuration</p> <ul style="list-style-type: none"> Viaduct Embankment Cut Half Mile Buffer City Boundary County Boundary Railroad Municipal Setting Designation (MSD) <p>Potential Habitat</p> <ul style="list-style-type: none"> Houston Toad Large-fruited Sand Verbena Navasota Ladies-tresses Endangered Species Threatened Species U.S. Army Corps of Engineers (USACE) Project Area Watershed (HUC 12) Boundary Public Water Supply Groundwater Well 	<ul style="list-style-type: none"> Impaired Waters with Total Maximum Daily Load (TMDL) Impaired Waters <p>Federal Emergency Management Agency (FEMA) Flood Zone</p> <ul style="list-style-type: none"> A - 1% AE - 1% AO - 1% X - 0.2% <p>Field-Collected Data</p> <ul style="list-style-type: none"> Perennial Stream/River Intermittent Stream/River Ephemeral Stream/River Other Stream/River Lake/Pond Emergent Wetland Forested Wetland Scrub/Shrub Wetland <p>National Hydrography Dataset (NHD)</p> <ul style="list-style-type: none"> Perennial Stream/River Intermittent Stream/River Artificial Stream/Canal Lake/Pond Reservoir Swamp/Marsh <p>National Wetlands Inventory (NWI)</p> <ul style="list-style-type: none"> Freshwater Emergent Wetland Freshwater Forested/Shrub Wetland Other
--	--

This Sheet only depicts Segment 3A; Segment 3C is also located in this same area and can be referenced on Sheet 89.

*Floodplains in Freestone and Madison Counties digitized from U.S. Dept of Housing and Urban Development 1978 and 1991 Flood Hazard Boundary Maps due to lack of digitally mapped FEMA floodplains.

Data Sources: County Boundaries - U.S. Census TIGER 2015; City Boundaries - TxDOT 2013; MSD - TCEQ 2015; USACE Project Areas - USACE 2014; Public Water Supply/Impaired Waters - EPA 2016; Groundwater Wells - TWDB 2015; NHD/HUC12 - USGS 2016; Reservoirs - TWDB 2014; NWI - USFWS 2016; Floodplains - FEMA 2016; Endangered/Threatened Species - TPWD TXNDD Element of Occurrence Records (EOR) 2017; ESRI World Street Map
Aerial Imagery: USDA NAIP 2014





**Dallas to Houston
High-Speed Rail Project
Natural Resources
Segment 3A
Sheet 52 of 257**

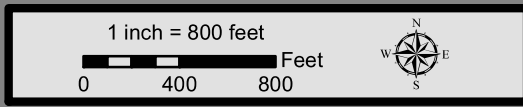
Legend

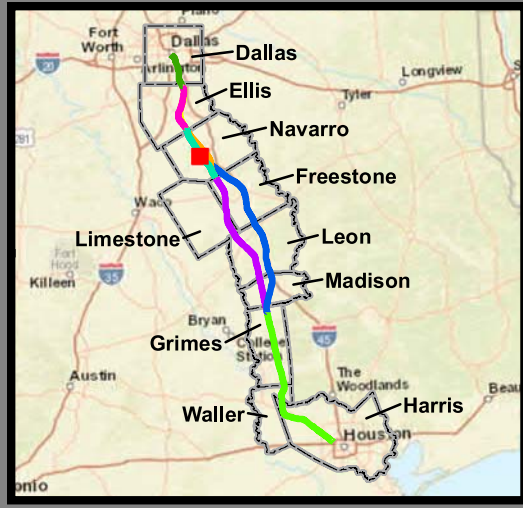
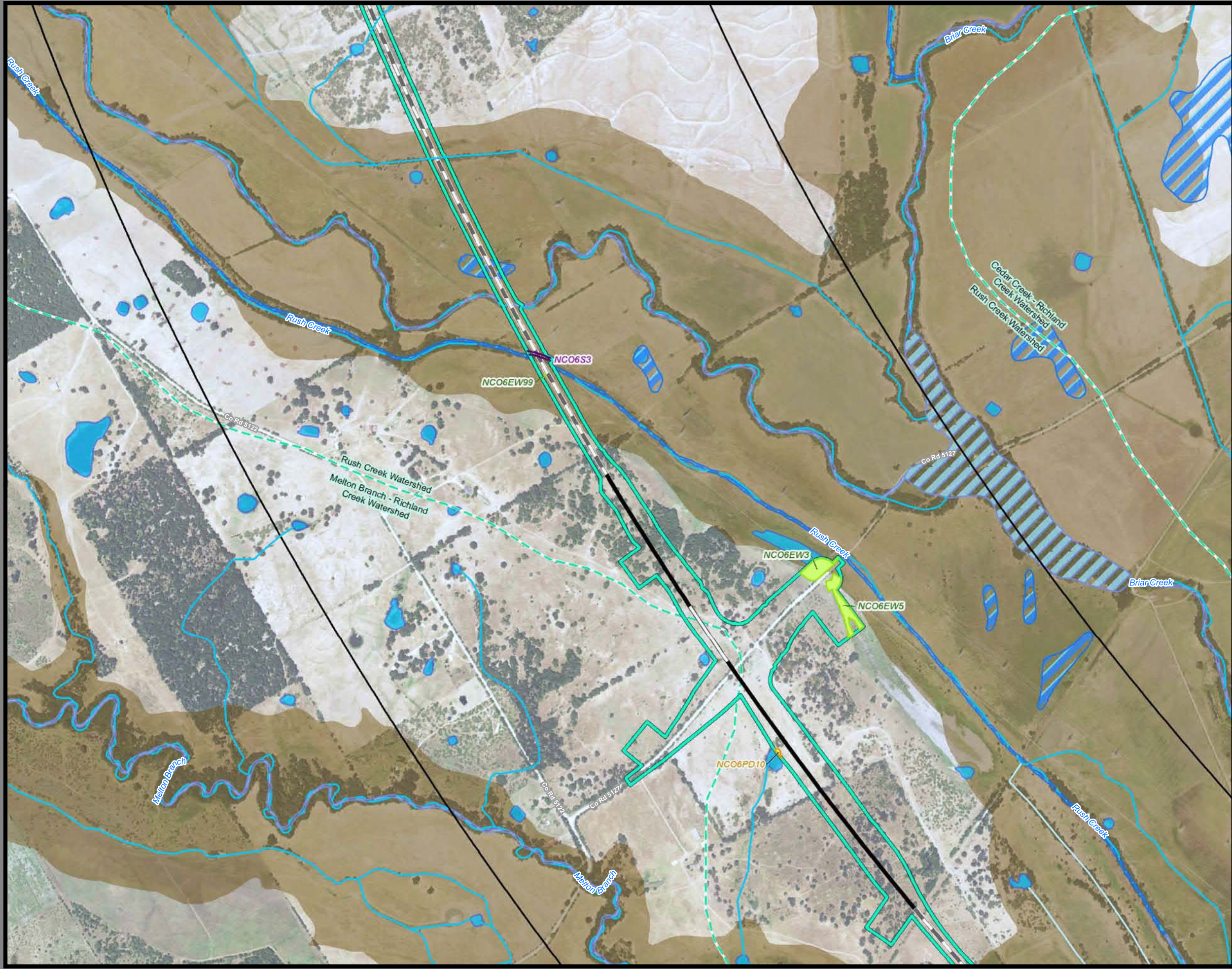
<ul style="list-style-type: none"> Segment 1 Segment 2A Segment 2B Segment 3A Segment 3B Segment 3C Segment 4 Segment 5 	<ul style="list-style-type: none"> Impaired Waters with Total Maximum Daily Load (TMDL) Impaired Waters
<ul style="list-style-type: none"> Viaduct Embankment Cut Half Mile Buffer City Boundary County Boundary Railroad Municipal Setting Designation (MSD) 	<ul style="list-style-type: none"> Federal Emergency Management Agency (FEMA) Flood Zone <ul style="list-style-type: none"> A - 1% AE - 1% AO - 1% X - 0.2%
<ul style="list-style-type: none"> Potential Habitat <ul style="list-style-type: none"> Houston Toad Large-fruited Sand Verbena Navasota Ladies'-tresses Endangered Species Threatened Species U.S. Army Corps of Engineers (USACE) Project Area Watershed (HUC 12) Boundary Public Water Supply Groundwater Well 	<ul style="list-style-type: none"> Field-Collected Data <ul style="list-style-type: none"> Perennial Stream/River Intermittent Stream/River Ephemeral Stream/River Other Stream/River Lake/Pond Emergent Wetland Forested Wetland Scrub/Shrub Wetland National Hydrography Dataset (NHD) <ul style="list-style-type: none"> Perennial Stream/River Intermittent Stream/River Artificial Stream/Canal Lake/Pond Reservoir Swamp/Marsh National Wetlands Inventory (NWI) <ul style="list-style-type: none"> Freshwater Emergent Wetland Freshwater Forested/Shrub Wetland Other

This Sheet only depicts Segment 3A; Segment 3C is also located in this same area and can be referenced on Sheet 90.

*Floodplains in Freestone and Madison Counties digitized from U.S. Dept of Housing and Urban Development 1978 and 1991 Flood Hazard Boundary Maps due to lack of digitally mapped FEMA floodplains.

Data Sources: County Boundaries - U.S. Census TIGER 2015; City Boundaries - TxDOT 2013; MSD - TCEQ 2015; USACE Project Areas - USACE 2014; Public Water Supply/Impaired Waters - EPA 2016; Groundwater Wells - TWDB 2015; NHD/HUC12 - USGS 2016; Reservoirs - TWDB 2014; NWI - USFWS 2016; Floodplains - FEMA 2016; Endangered/Threatened Species - TPWD TXNDD Element of Occurrence Records (EOR) 2017; ESRI World Street Map
Aerial Imagery: USDA NAIP 2014





**Dallas to Houston
High-Speed Rail Project
Natural Resources
Segment 3A
Sheet 53 of 257**

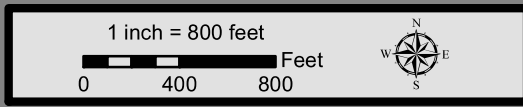
Legend

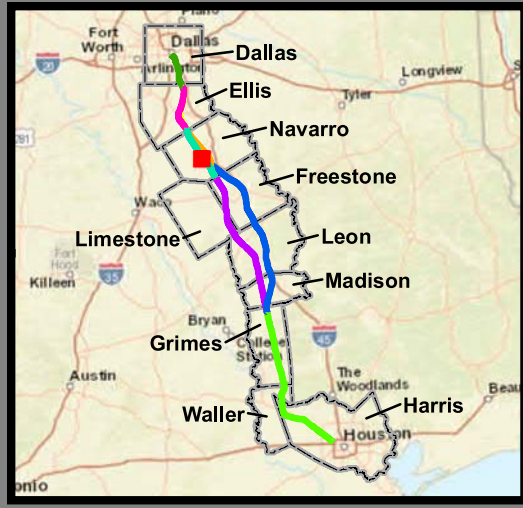
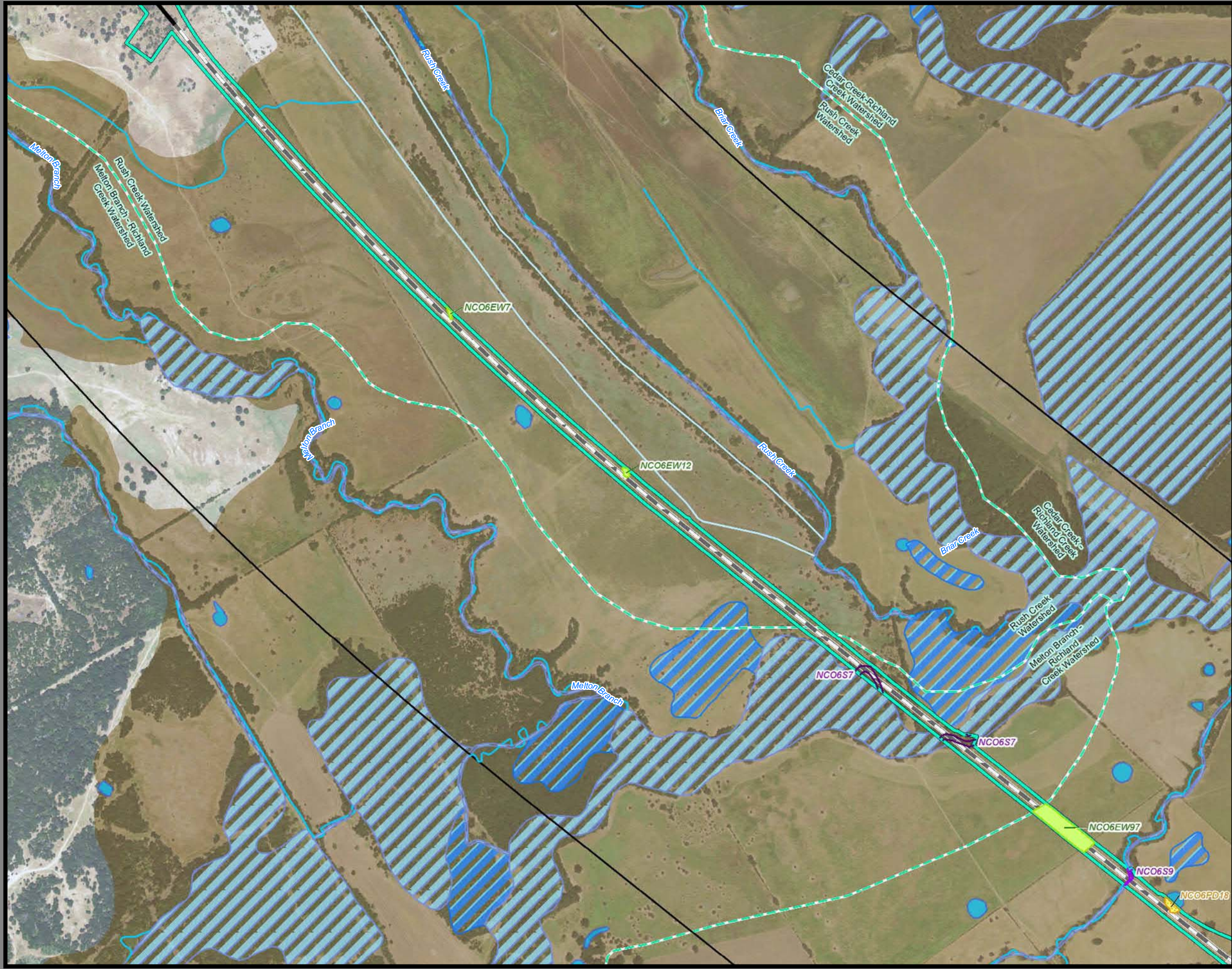
<p>Limits of Disturbance</p> <ul style="list-style-type: none"> Segment 1 Segment 2A Segment 2B Segment 3A Segment 3B Segment 3C Segment 4 Segment 5 <p>Track Configuration</p> <ul style="list-style-type: none"> Viaduct Embankment Cut Half Mile Buffer City Boundary County Boundary Railroad Municipal Setting Designation (MSD) <p>Potential Habitat</p> <ul style="list-style-type: none"> Houston Toad Large-fruited Sand Verbena Navasota Ladies'-tresses Endangered Species Threatened Species U.S. Army Corps of Engineers (USACE) Project Area Watershed (HUC 12) Boundary Public Water Supply Groundwater Well 	<ul style="list-style-type: none"> Impaired Waters with Total Maximum Daily Load (TMDL) Impaired Waters <p>Federal Emergency Management Agency (FEMA) Flood Zone</p> <ul style="list-style-type: none"> A - 1% AE - 1% AO - 1% X - 0.2% <p>Field-Collected Data</p> <ul style="list-style-type: none"> Perennial Stream/River Intermittent Stream/River Ephemeral Stream/River Other Stream/River Lake/Pond Emergent Wetland Forested Wetland Scrub/Shrub Wetland <p>National Hydrography Dataset (NHD)</p> <ul style="list-style-type: none"> Perennial Stream/River Intermittent Stream/River Artificial Stream/Canal Lake/Pond Reservoir Swamp/Marsh <p>National Wetlands Inventory (NWI)</p> <ul style="list-style-type: none"> Freshwater Emergent Wetland Freshwater Forested/Shrub Wetland Other
---	--

This Sheet only depicts Segment 3A; Segment 3C is also located in this same area and can be referenced on Sheet 91.

*Floodplains in Freestone and Madison Counties digitized from U.S. Dept of Housing and Urban Development 1978 and 1991 Flood Hazard Boundary Maps due to lack of digitally mapped FEMA floodplains.

Data Sources: County Boundaries - U.S. Census TIGER 2015; City Boundaries - TxDOT 2013; MSD - TCEQ 2015; USACE Project Areas - USACE 2014; Public Water Supply/Impaired Waters - EPA 2016; Groundwater Wells - TWDB 2015; NHD/HUC12 - USGS 2016; Reservoirs - TWDB 2014; NWI - USFWS 2016; Floodplains - FEMA 2016; Endangered/Threatened Species - TPWD TXNDD Element of Occurrence Records (EOR) 2017; ESRI World Street Map
Aerial Imagery: USDA NAIP 2014





**Dallas to Houston
High-Speed Rail Project
Natural Resources
Segment 3A
Sheet 54 of 257**

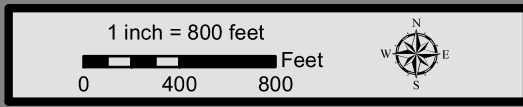
Legend

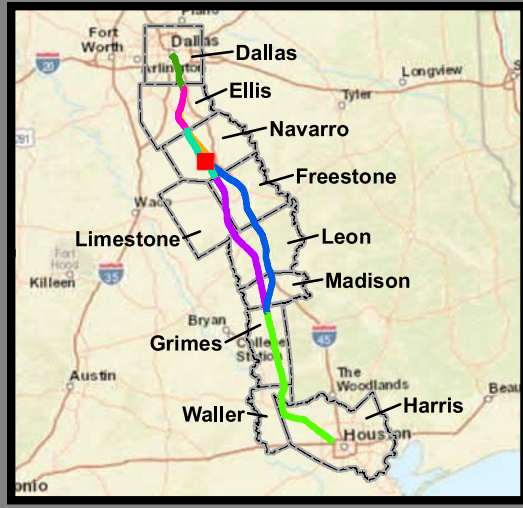
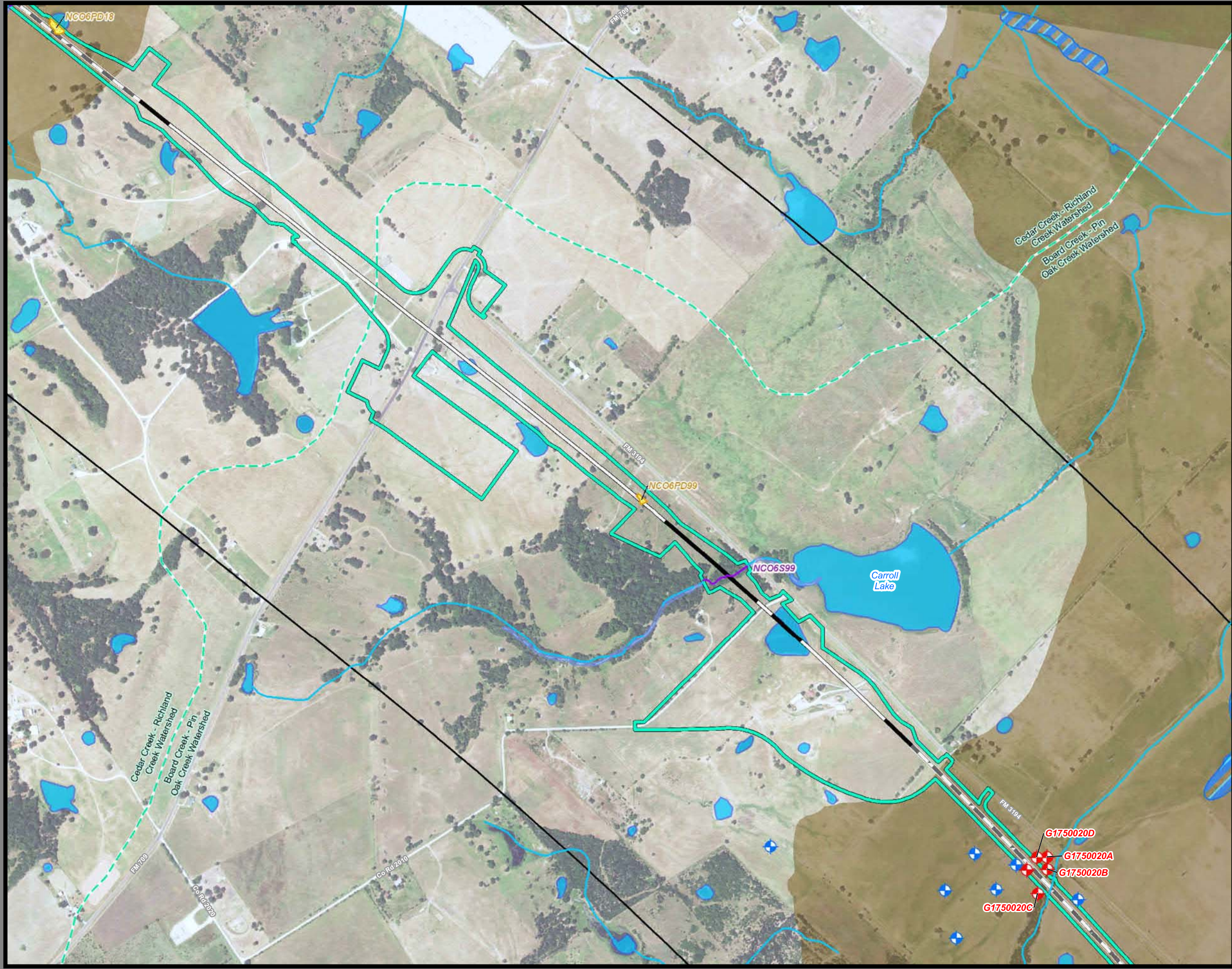
Limits of Disturbance	Impaired Waters with Total Maximum Daily Load (TMDL)
Segment 1	Impaired Waters
Segment 2A	Federal Emergency Management Agency (FEMA) Flood Zone
Segment 2B	A - 1%
Segment 3A	AE - 1%
Segment 3B	AO - 1%
Segment 3C	X - 0.2%
Segment 4	Field-Collected Data
Segment 5	Perennial Stream/River
Track Configuration	Intermittent Stream/River
Viaduct	Ephemeral Stream/River
Embankment	Other Stream/River
Cut	Lake/Pond
Half Mile Buffer	Emergent Wetland
City Boundary	Forested Wetland
County Boundary	Scrub/Shrub Wetland
Railroad	National Hydrography Dataset (NHD)
Municipal Setting Designation (MSD)	Perennial Stream/River
Potential Habitat	Intermittent Stream/River
Houston Toad	Artificial Stream/Canal
Large-fruited Sand Verbena	Lake/Pond
Navasota Ladies'-tresses	Reservoir
Endangered Species	Swamp/Marsh
Threatened Species	National Wetlands Inventory (NWI)
U.S. Army Corps of Engineers (USACE) Project Area	Freshwater Emergent Wetland
Watershed (HUC 12) Boundary	Freshwater Forested/Shrub Wetland
Public Water Supply	Other
Groundwater Well	

This Sheet only depicts Segment 3A; Segment 3C is also located in this same area and can be referenced on Sheet 92.

*Floodplains in Freestone and Madison Counties digitized from U.S. Dept of Housing and Urban Development 1978 and 1991 Flood Hazard Boundary Maps due to lack of digitally mapped FEMA floodplains.

Data Sources: County Boundaries - U.S. Census TIGER 2015; City Boundaries - TxDOT 2013; MSD - TCEQ 2015; USACE Project Areas - USACE 2014; Public Water Supply/Impaired Waters - EPA 2016; Groundwater Wells - TWDB 2015; NHD/HUC12 - USGS 2016; Reservoirs - TWDB 2014; NWI - USFWS 2016; Floodplains - FEMA 2016; Endangered/Threatened Species - TPWD TXNDD Element of Occurrence Records (EOR) 2017; ESRI World Street Map
Aerial Imagery: USDA NAIP 2014





**Dallas to Houston
High-Speed Rail Project
Natural Resources
Segment 3A
Sheet 55 of 257**

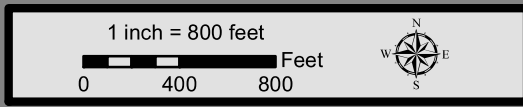
Legend

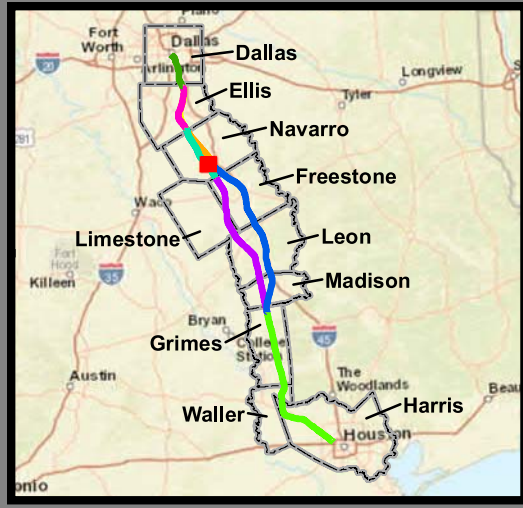
<p>Limits of Disturbance</p> <ul style="list-style-type: none"> Segment 1 Segment 2A Segment 2B Segment 3A Segment 3B Segment 3C Segment 4 Segment 5 <p>Track Configuration</p> <ul style="list-style-type: none"> Viaduct Embankment Cut Half Mile Buffer City Boundary County Boundary Railroad Municipal Setting Designation (MSD) <p>Potential Habitat</p> <ul style="list-style-type: none"> Houston Toad Large-fruited Sand Verbena Navasota Ladies'-tresses Endangered Species Threatened Species U.S. Army Corps of Engineers (USACE) Project Area Watershed (HUC 12) Boundary Public Water Supply Groundwater Well 	<p>Impaired Waters with Total Maximum Daily Load (TMDL)</p> <p>Impaired Waters</p> <p>Federal Emergency Management Agency (FEMA) Flood Zone</p> <ul style="list-style-type: none"> A - 1% AE - 1% AO - 1% X - 0.2% <p>Field-Collected Data</p> <ul style="list-style-type: none"> Perennial Stream/River Intermittent Stream/River Ephemeral Stream/River Other Stream/River Lake/Pond Emergent Wetland Forested Wetland Scrub/Shrub Wetland <p>National Hydrography Dataset (NHD)</p> <ul style="list-style-type: none"> Perennial Stream/River Intermittent Stream/River Artificial Stream/Canal Lake/Pond Reservoir Swamp/Marsh <p>National Wetlands Inventory (NWI)</p> <ul style="list-style-type: none"> Freshwater Emergent Wetland Freshwater Forested/Shrub Wetland Other
---	---

This Sheet only depicts Segment 3A; Segment 3C is also located in this same area and can be referenced on Sheet 93.

*Floodplains in Freestone and Madison Counties digitized from U.S. Dept of Housing and Urban Development 1978 and 1991 Flood Hazard Boundary Maps due to lack of digitally mapped FEMA floodplains.

Data Sources: County Boundaries - U.S. Census TIGER 2015; City Boundaries - TxDOT 2013; MSD - TCEQ 2015; USACE Project Areas - USACE 2014; Public Water Supply/Impaired Waters - EPA 2016; Groundwater Wells - TWDB 2015; NHD/HUC12 - USGS 2016; Reservoirs - TWDB 2014; NWI - USFWS 2016; Floodplains - FEMA 2016; Endangered/Threatened Species - TPWD TXNDD Element of Occurrence Records (EOR) 2017; ESRI World Street Map
Aerial Imagery: USDA NAIP 2014





**Dallas to Houston
High-Speed Rail Project
Natural Resources
Segment 3A
Sheet 56 of 257**

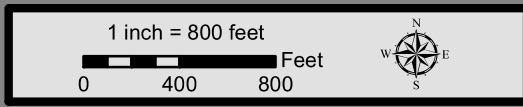
Legend

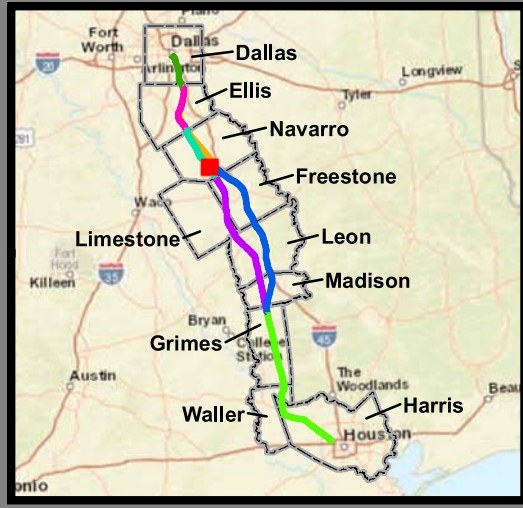
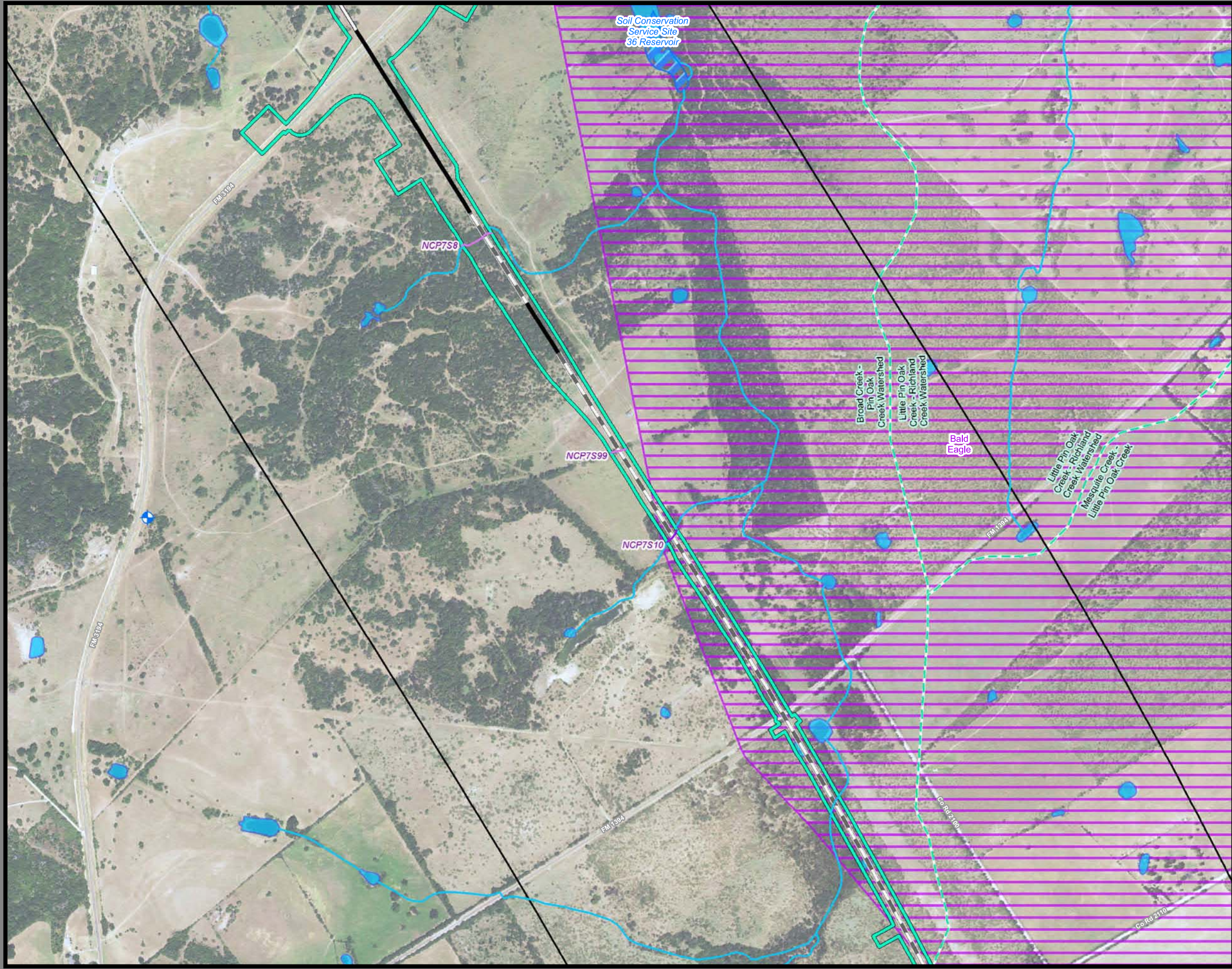
<p>Limits of Disturbance</p> <ul style="list-style-type: none"> Segment 1 Segment 2A Segment 2B Segment 3A Segment 3B Segment 3C Segment 4 Segment 5 <p>Track Configuration</p> <ul style="list-style-type: none"> Viaduct Embankment Cut Half Mile Buffer City Boundary County Boundary Railroad Municipal Setting Designation (MSD) <p>Potential Habitat</p> <ul style="list-style-type: none"> Houston Toad Large-fruited Sand Verbena Navasota Ladies'-tresses Endangered Species Threatened Species U.S. Army Corps of Engineers (USACE) Project Area Watershed (HUC 12) Boundary Public Water Supply Groundwater Well 	<ul style="list-style-type: none"> Impaired Waters with Total Maximum Daily Load (TMDL) Impaired Waters <p>Federal Emergency Management Agency (FEMA) Flood Zone</p> <ul style="list-style-type: none"> A - 1% AE - 1% AO - 1% X - 0.2% <p>Field-Collected Data</p> <ul style="list-style-type: none"> Perennial Stream/River Intermittent Stream/River Ephemeral Stream/River Other Stream/River Lake/Pond Emergent Wetland Forested Wetland Scrub/Shrub Wetland <p>National Hydrography Dataset (NHD)</p> <ul style="list-style-type: none"> Perennial Stream/River Intermittent Stream/River Artificial Stream/Canal Lake/Pond Reservoir Swamp/Marsh <p>National Wetlands Inventory (NWI)</p> <ul style="list-style-type: none"> Freshwater Emergent Wetland Freshwater Forested/Shrub Wetland Other
---	--

This Sheet only depicts Segment 3A; Segment 3C is also located in this same area and can be referenced on Sheet 94.

*Floodplains in Freestone and Madison Counties digitized from U.S. Dept of Housing and Urban Development 1978 and 1991 Flood Hazard Boundary Maps due to lack of digitally mapped FEMA floodplains.

Data Sources: County Boundaries - U.S. Census TIGER 2015; City Boundaries - TxDOT 2013; MSD - TCEQ 2015; USACE Project Areas - USACE 2014; Public Water Supply/Impaired Waters - EPA 2016; Groundwater Wells - TWDB 2015; NHD/HUC12 - USGS 2016; Reservoirs - TWDB 2014; NWI - USFWS 2016; Floodplains - FEMA 2016; Endangered/Threatened Species - TPWD TXNDD Element of Occurrence Records (EOR) 2017; ESRI World Street Map
Aerial Imagery: USDA NAIP 2014





**Dallas to Houston
High-Speed Rail Project
Natural Resources
Segment 3A
Sheet 57 of 257**

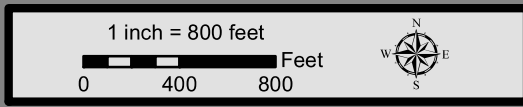
Legend

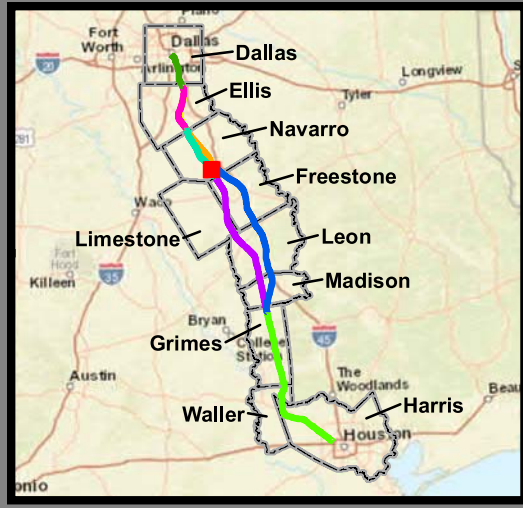
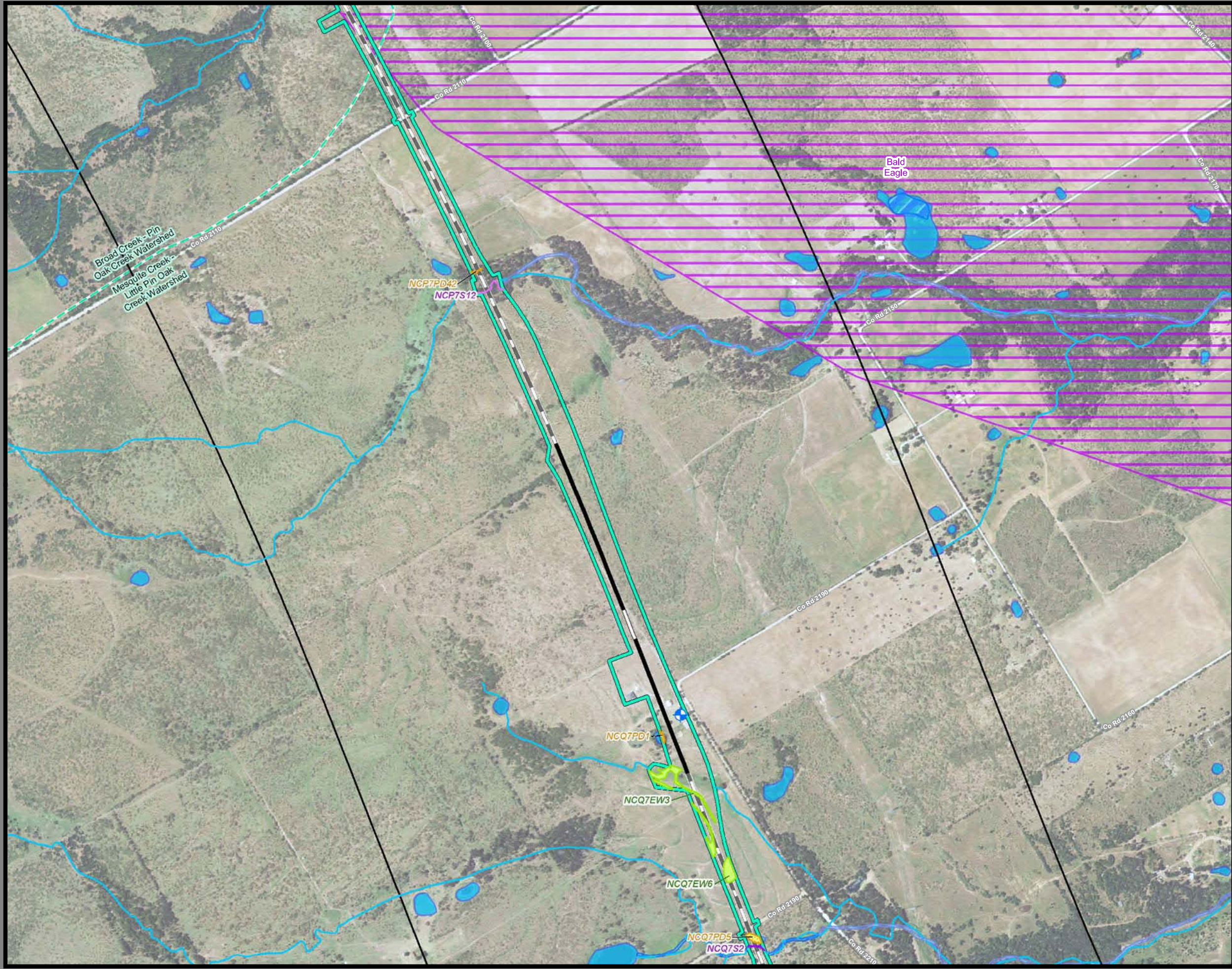
<p>Limits of Disturbance</p> <ul style="list-style-type: none"> Segment 1 Segment 2A Segment 2B Segment 3A Segment 3B Segment 3C Segment 4 Segment 5 <p>Track Configuration</p> <ul style="list-style-type: none"> Viaduct Embankment Cut Half Mile Buffer City Boundary County Boundary Railroad Municipal Setting Designation (MSD) <p>Potential Habitat</p> <ul style="list-style-type: none"> Houston Toad Large-fruited Sand Verbena Navasota Ladies'-tresses Endangered Species Threatened Species U.S. Army Corps of Engineers (USACE) Project Area Watershed (HUC 12) Boundary Public Water Supply Groundwater Well 	<ul style="list-style-type: none"> Impaired Waters with Total Maximum Daily Load (TMDL) Impaired Waters <p>Federal Emergency Management Agency (FEMA) Flood Zone</p> <ul style="list-style-type: none"> A - 1% AE - 1% AO - 1% X - 0.2% <p>Field-Collected Data</p> <ul style="list-style-type: none"> Perennial Stream/River Intermittent Stream/River Ephemeral Stream/River Other Stream/River Lake/Pond Emergent Wetland Forested Wetland Scrub/Shrub Wetland <p>National Hydrography Dataset (NHD)</p> <ul style="list-style-type: none"> Perennial Stream/River Intermittent Stream/River Artificial Stream/Canal Lake/Pond Reservoir Swamp/Marsh <p>National Wetlands Inventory (NWI)</p> <ul style="list-style-type: none"> Freshwater Emergent Wetland Freshwater Forested/Shrub Wetland Other
---	--

This Sheet only depicts Segment 3A; Segment 3B is also located in this same area and can be referenced on Sheet 76.

*Floodplains in Freestone and Madison Counties digitized from U.S. Dept of Housing and Urban Development 1978 and 1991 Flood Hazard Boundary Maps due to lack of digitally mapped FEMA floodplains.

Data Sources: County Boundaries - U.S. Census TIGER 2015; City Boundaries - TxDOT 2013; MSD - TCEQ 2015; USACE Project Areas - USACE 2014; Public Water Supply/Impaired Waters - EPA 2016; Groundwater Wells - TWDB 2015; NHD/HUC12 - USGS 2016; Reservoirs - TWDB 2014; NWI - USFWS 2016; Floodplains - FEMA 2016; Endangered/Threatened Species - TPWD TXNDD Element of Occurrence Records (EOR) 2017; ESRI World Street Map
Aerial Imagery: USDA NAIP 2014





**Dallas to Houston
High-Speed Rail Project
Natural Resources
Segment 3A
Sheet 58 of 257**

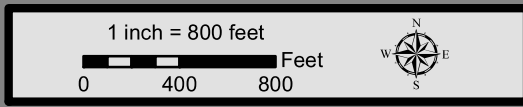
Legend

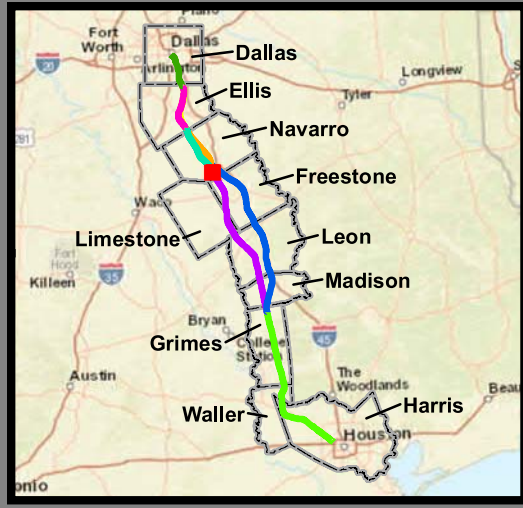
<p>Limits of Disturbance</p> <ul style="list-style-type: none"> Segment 1 Segment 2A Segment 2B Segment 3A Segment 3B Segment 3C Segment 4 Segment 5 <p>Track Configuration</p> <ul style="list-style-type: none"> Viaduct Embankment Cut Half Mile Buffer City Boundary County Boundary Railroad Municipal Setting Designation (MSD) <p>Potential Habitat</p> <ul style="list-style-type: none"> Houston Toad Large-fruited Sand Verbena Navasota Ladies'-tresses Endangered Species Threatened Species U.S. Army Corps of Engineers (USACE) Project Area Watershed (HUC 12) Boundary Public Water Supply Groundwater Well 	<ul style="list-style-type: none"> Impaired Waters with Total Maximum Daily Load (TMDL) Impaired Waters <p>Federal Emergency Management Agency (FEMA) Flood Zone</p> <ul style="list-style-type: none"> A - 1% AE - 1% AO - 1% X - 0.2% <p>Field-Collected Data</p> <ul style="list-style-type: none"> Perennial Stream/River Intermittent Stream/River Ephemeral Stream/River Other Stream/River Lake/Pond Emergent Wetland Forested Wetland Scrub/Shrub Wetland <p>National Hydrography Dataset (NHD)</p> <ul style="list-style-type: none"> Perennial Stream/River Intermittent Stream/River Artificial Stream/Canal Lake/Pond Reservoir Swamp/Marsh <p>National Wetlands Inventory (NWI)</p> <ul style="list-style-type: none"> Freshwater Emergent Wetland Freshwater Forested/Shrub Wetland Other
---	--

This Sheet only depicts Segment 3A; Segment 3B is also located in this same area and can be referenced on Sheet 77.

*Floodplains in Freestone and Madison Counties digitized from U.S. Dept of Housing and Urban Development 1978 and 1991 Flood Hazard Boundary Maps due to lack of digitally mapped FEMA floodplains.

Data Sources: County Boundaries - U.S. Census TIGER 2015; City Boundaries - TxDOT 2013; MSD - TCEQ 2015; USACE Project Areas - USACE 2014; Public Water Supply/Impaired Waters - EPA 2016; Groundwater Wells - TWDB 2015; NHD/HUC12 - USGS 2016; Reservoirs - TWDB 2014; NWI - USFWS 2016; Floodplains - FEMA 2016; Endangered/Threatened Species - TPWD TXNDD Element of Occurrence Records (EOR) 2017; ESRI World Street Map
Aerial Imagery: USDA NAIP 2014





**Dallas to Houston
High-Speed Rail Project
Natural Resources
Segment 3A
Sheet 59 of 257**

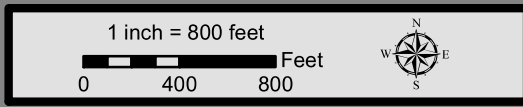
Legend

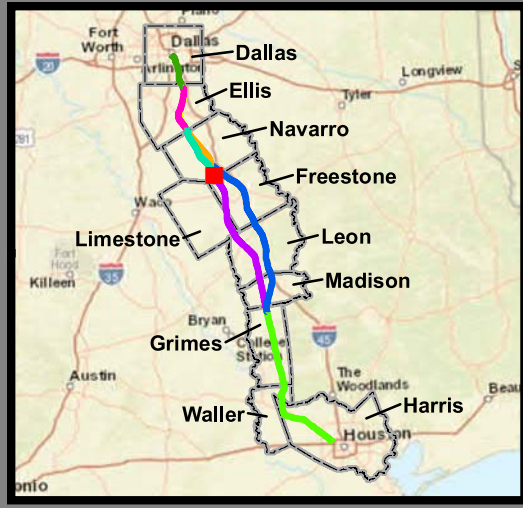
<p>Limits of Disturbance</p> <ul style="list-style-type: none"> Segment 1 Segment 2A Segment 2B Segment 3A Segment 3B Segment 3C Segment 4 Segment 5 <p>Track Configuration</p> <ul style="list-style-type: none"> Viaduct Embankment Cut Half Mile Buffer City Boundary County Boundary Railroad Municipal Setting Designation (MSD) <p>Potential Habitat</p> <ul style="list-style-type: none"> Houston Toad Large-fruited Sand Verbena Navasota Ladies'-tresses Endangered Species Threatened Species U.S. Army Corps of Engineers (USACE) Project Area Watershed (HUC 12) Boundary Public Water Supply Groundwater Well 	<ul style="list-style-type: none"> Impaired Waters with Total Maximum Daily Load (TMDL) Impaired Waters <p>Federal Emergency Management Agency (FEMA) Flood Zone</p> <ul style="list-style-type: none"> A - 1% AE - 1% AO - 1% X - 0.2% <p>Field-Collected Data</p> <ul style="list-style-type: none"> Perennial Stream/River Intermittent Stream/River Ephemeral Stream/River Other Stream/River Lake/Pond Emergent Wetland Forested Wetland Scrub/Shrub Wetland <p>National Hydrography Dataset (NHD)</p> <ul style="list-style-type: none"> Perennial Stream/River Intermittent Stream/River Artificial Stream/Canal Lake/Pond Reservoir Swamp/Marsh <p>National Wetlands Inventory (NWI)</p> <ul style="list-style-type: none"> Freshwater Emergent Wetland Freshwater Forested/Shrub Wetland Other
---	--

This Sheet only depicts Segment 3A; Segment 3B is also located in this same area and can be referenced on Sheet 78.

*Floodplains in Freestone and Madison Counties digitized from U.S. Dept of Housing and Urban Development 1978 and 1991 Flood Hazard Boundary Maps due to lack of digitally mapped FEMA floodplains.

Data Sources: County Boundaries - U.S. Census TIGER 2015; City Boundaries - TxDOT 2013; MSD - TCEQ 2015; USACE Project Areas - USACE 2014; Public Water Supply/Impaired Waters - EPA 2016; Groundwater Wells - TWDB 2015; NHD/HUC12 - USGS 2016; Reservoirs - TWDB 2014; NWI - USFWS 2016; Floodplains - FEMA 2016; Endangered/Threatened Species - TPWD TXNDD Element of Occurrence Records (EOR) 2017; ESRI World Street Map
Aerial Imagery: USDA NAIP 2014





**Dallas to Houston
High-Speed Rail Project
Natural Resources
Segment 3A
Sheet 60 of 257**

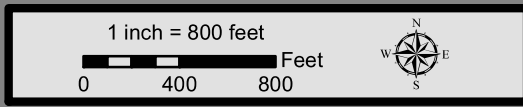
Legend

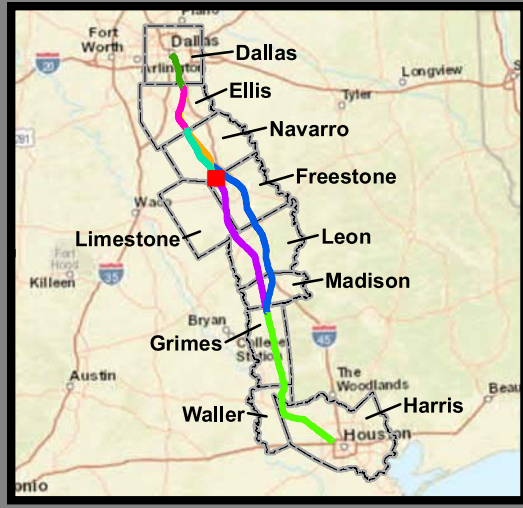
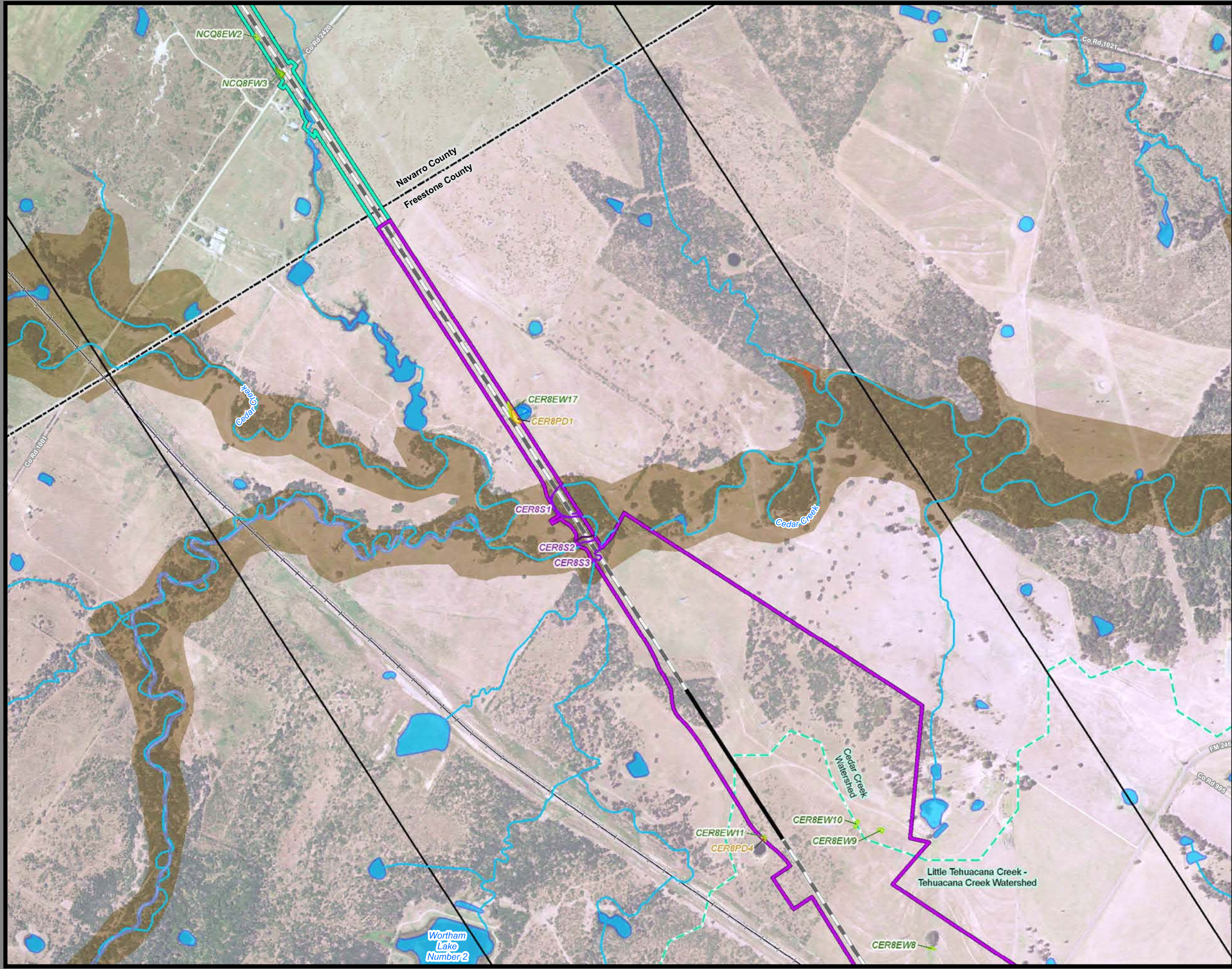
<ul style="list-style-type: none"> Segment 1 Segment 2A Segment 2B Segment 3A Segment 3B Segment 3C Segment 4 Segment 5 	<ul style="list-style-type: none"> Impaired Waters with Total Maximum Daily Load (TMDL) Impaired Waters
<ul style="list-style-type: none"> Viaduct Embankment Cut Half Mile Buffer City Boundary County Boundary Railroad Municipal Setting Designation (MSD) 	<ul style="list-style-type: none"> Federal Emergency Management Agency (FEMA) Flood Zone <ul style="list-style-type: none"> A - 1% AE - 1% AO - 1% X - 0.2%
<ul style="list-style-type: none"> Houston Toad Large-fruited Sand Verbena Navasota Ladies'-tresses Endangered Species Threatened Species U.S. Army Corps of Engineers (USACE) Project Area Watershed (HUC 12) Boundary Public Water Supply Groundwater Well 	<ul style="list-style-type: none"> Field-Collected Data <ul style="list-style-type: none"> Perennial Stream/River Intermittent Stream/River Ephemeral Stream/River Other Stream/River Lake/Pond Emergent Wetland Forested Wetland Scrub/Shrub Wetland National Hydrography Dataset (NHD) <ul style="list-style-type: none"> Perennial Stream/River Intermittent Stream/River Artificial Stream/Canal Lake/Pond Reservoir Swamp/Marsh National Wetlands Inventory (NWI) <ul style="list-style-type: none"> Freshwater Emergent Wetland Freshwater Forested/Shrub Wetland Other

This Sheet only depicts Segment 3A; Segment 3B is also located in this same area and can be referenced on Sheet 79.

*Floodplains in Freestone and Madison Counties digitized from U.S. Dept of Housing and Urban Development 1978 and 1991 Flood Hazard Boundary Maps due to lack of digitally mapped FEMA floodplains.

Data Sources: County Boundaries - U.S. Census TIGER 2015; City Boundaries - TxDOT 2013; MSD - TCEQ 2015; USACE Project Areas - USACE 2014; Public Water Supply/Impaired Waters - EPA 2016; Groundwater Wells - TWDB 2015; NHD/HUC12 - USGS 2016; Reservoirs - TWDB 2014; NWI - USFWS 2016; Floodplains - FEMA 2016; Endangered/Threatened Species - TPWD TXNDD Element of Occurrence Records (EOR) 2017; ESRI World Street Map
Aerial Imagery: USDA NAIP 2014





**Dallas to Houston
High-Speed Rail Project
Natural Resources
Segment 3A, 4
Sheet 61 of 257**

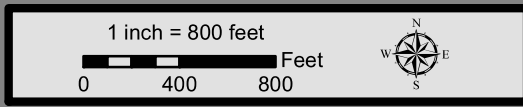
Legend

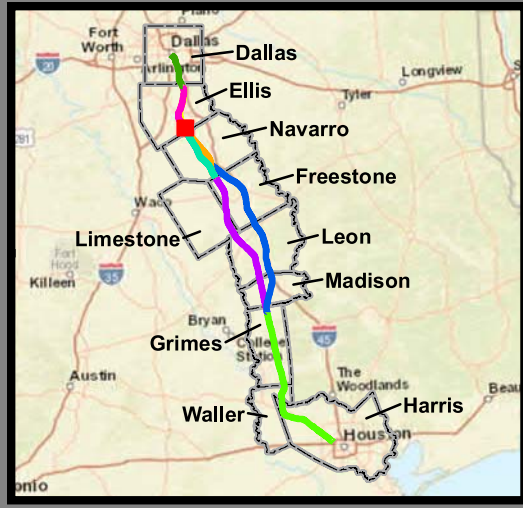
<p>Limits of Disturbance</p> <ul style="list-style-type: none"> Segment 1 Segment 2A Segment 2B Segment 3A Segment 3B Segment 3C Segment 4 Segment 5 <p>Track Configuration</p> <ul style="list-style-type: none"> Viaduct Embankment Cut Half Mile Buffer City Boundary County Boundary Railroad Municipal Setting Designation (MSD) <p>Potential Habitat</p> <ul style="list-style-type: none"> Houston Toad Large-fruited Sand Verbena Navasota Ladies'-tresses Endangered Species Threatened Species U.S. Army Corps of Engineers (USACE) Project Area Watershed (HUC 12) Boundary Public Water Supply Groundwater Well 	<ul style="list-style-type: none"> Impaired Waters with Total Maximum Daily Load (TMDL) Impaired Waters <p>Federal Emergency Management Agency (FEMA) Flood Zone</p> <ul style="list-style-type: none"> A - 1% AE - 1% AO - 1% X - 0.2% <p>Field-Collected Data</p> <ul style="list-style-type: none"> Perennial Stream/River Intermittent Stream/River Ephemeral Stream/River Other Stream/River Lake/Pond Emergent Wetland Forested Wetland Scrub/Shrub Wetland <p>National Hydrography Dataset (NHD)</p> <ul style="list-style-type: none"> Perennial Stream/River Intermittent Stream/River Artificial Stream/Canal Lake/Pond Reservoir Swamp/Marsh <p>National Wetlands Inventory (NWI)</p> <ul style="list-style-type: none"> Freshwater Emergent Wetland Freshwater Forested/Shrub Wetland Other
---	--

This Sheet only depicts Segments 3A & 4; Segment 3B is also located in this same area and can be referenced on Sheet 80.

*Floodplains in Freestone and Madison Counties digitized from U.S. Dept of Housing and Urban Development 1978 and 1991 Flood Hazard Boundary Maps due to lack of digitally mapped FEMA floodplains.

Data Sources: County Boundaries - U.S. Census TIGER 2015; City Boundaries - TxDOT 2013; MSD - TCEQ 2015; USACE Project Areas - USACE 2014; Public Water Supply/Impaired Waters - EPA 2016; Groundwater Wells - TWDB 2015; NHD/HUC12 - USGS 2016; Reservoirs - TWDB 2014; NWI - USFWS 2016; Floodplains - FEMA 2016; Endangered/Threatened Species - TPWD TXNDD Element of Occurrence Records (EOR) 2017; ESRI World Street Map
Aerial Imagery: USDA NAIP 2014





**Dallas to Houston
High-Speed Rail Project
Natural Resources
Segment 2B, 3B
Sheet 62 of 257**

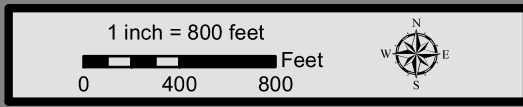
Legend

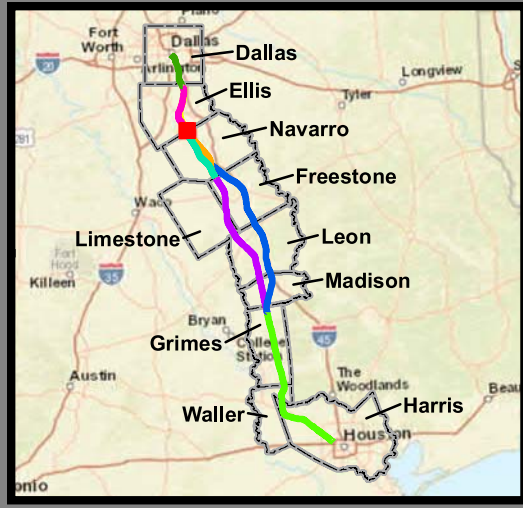
<p>Limits of Disturbance</p> <ul style="list-style-type: none"> Segment 1 Segment 2A Segment 2B Segment 3A Segment 3B Segment 3C Segment 4 Segment 5 <p>Track Configuration</p> <ul style="list-style-type: none"> Viaduct Embankment Cut Half Mile Buffer City Boundary County Boundary Railroad Municipal Setting Designation (MSD) <p>Potential Habitat</p> <ul style="list-style-type: none"> Houston Toad Large-fruited Sand Verbena Navasota Ladies'-tresses Endangered Species Threatened Species U.S. Army Corps of Engineers (USACE) Project Area Watershed (HUC 12) Boundary Public Water Supply Groundwater Well 	<ul style="list-style-type: none"> Impaired Waters with Total Maximum Daily Load (TMDL) Impaired Waters <p>Federal Emergency Management Agency (FEMA) Flood Zone</p> <ul style="list-style-type: none"> A - 1% AE - 1% AO - 1% X - 0.2% <p>Field-Collected Data</p> <ul style="list-style-type: none"> Perennial Stream/River Intermittent Stream/River Ephemeral Stream/River Other Stream/River Lake/Pond Emergent Wetland Forested Wetland Scrub/Shrub Wetland <p>National Hydrography Dataset (NHD)</p> <ul style="list-style-type: none"> Perennial Stream/River Intermittent Stream/River Artificial Stream/Canal Lake/Pond Reservoir Swamp/Marsh <p>National Wetlands Inventory (NWI)</p> <ul style="list-style-type: none"> Freshwater Emergent Wetland Freshwater Forested/Shrub Wetland Other
---	--

This Sheet only depicts Segments 2B & 3B; Segments 2A, 3A & 3C are also located in this same area and can be referenced on Sheets 27, 44 & 82.

*Floodplains in Freestone and Madison Counties digitized from U.S. Dept of Housing and Urban Development 1978 and 1991 Flood Hazard Boundary Maps due to lack of digitally mapped FEMA floodplains.

Data Sources: County Boundaries - U.S. Census TIGER 2015; City Boundaries - TxDOT 2013; MSD - TCEQ 2015; USACE Project Areas - USACE 2014; Public Water Supply/Impaired Waters - EPA 2016; Groundwater Wells - TWDB 2015; NHD/HUC12 - USGS 2016; Reservoirs - TWDB 2014; NWI - USFWS 2016; Floodplains - FEMA 2016; Endangered/Threatened Species - TPWD TXNDD Element of Occurrence Records (EOR) 2017; ESRI World Street Map
Aerial Imagery: USDA NAIP 2014





**Dallas to Houston
High-Speed Rail Project
Natural Resources
Segment 3B
Sheet 63 of 257**

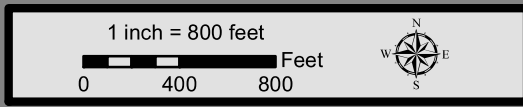
Legend

<p>Limits of Disturbance</p> <ul style="list-style-type: none"> Segment 1 Segment 2A Segment 2B Segment 3A Segment 3B Segment 3C Segment 4 Segment 5 <p>Track Configuration</p> <ul style="list-style-type: none"> Viaduct Embankment Cut Half Mile Buffer City Boundary County Boundary Railroad Municipal Setting Designation (MSD) <p>Potential Habitat</p> <ul style="list-style-type: none"> Houston Toad Large-fruited Sand Verbena Navasota Ladies'-tresses Endangered Species Threatened Species U.S. Army Corps of Engineers (USACE) Project Area Watershed (HUC 12) Boundary Public Water Supply Groundwater Well 	<ul style="list-style-type: none"> Impaired Waters with Total Maximum Daily Load (TMDL) Impaired Waters <p>Federal Emergency Management Agency (FEMA) Flood Zone</p> <ul style="list-style-type: none"> A - 1% AE - 1% AO - 1% X - 0.2% <p>Field-Collected Data</p> <ul style="list-style-type: none"> Perennial Stream/River Intermittent Stream/River Ephemeral Stream/River Other Stream/River Lake/Pond Emergent Wetland Forested Wetland Scrub/Shrub Wetland <p>National Hydrography Dataset (NHD)</p> <ul style="list-style-type: none"> Perennial Stream/River Intermittent Stream/River Artificial Stream/Canal Lake/Pond Reservoir Swamp/Marsh <p>National Wetlands Inventory (NWI)</p> <ul style="list-style-type: none"> Freshwater Emergent Wetland Freshwater Forested/Shrub Wetland Other
---	--

This Sheet only depicts Segment 3B; Segments 3A & 3C are also located in this same area and can be referenced on Sheets 44 & 82.

*Floodplains in Freestone and Madison Counties digitized from U.S. Dept of Housing and Urban Development 1978 and 1991 Flood Hazard Boundary Maps due to lack of digitally mapped FEMA floodplains.

Data Sources: County Boundaries - U.S. Census TIGER 2015; City Boundaries - TxDOT 2013; MSD - TCEQ 2015; USACE Project Areas - USACE 2014; Public Water Supply/Impaired Waters - EPA 2016; Groundwater Wells - TWDB 2015; NHD/HUC12 - USGS 2016; Reservoirs - TWDB 2014; NWI - USFWS 2016; Floodplains - FEMA 2016; Endangered/Threatened Species - TPWD TXNDD Element of Occurrence Records (EOR) 2017; ESRI World Street Map
Aerial Imagery: USDA NAIP 2014





**Dallas to Houston
High-Speed Rail Project
Natural Resources
Segment 3B
Sheet 64 of 257**

Legend

<p>Limits of Disturbance</p> <ul style="list-style-type: none"> Segment 1 Segment 2A Segment 2B Segment 3A Segment 3B Segment 3C Segment 4 Segment 5 <p>Track Configuration</p> <ul style="list-style-type: none"> Viaduct Embankment Cut Half Mile Buffer City Boundary County Boundary Railroad Municipal Setting Designation (MSD) <p>Potential Habitat</p> <ul style="list-style-type: none"> Houston Toad Large-fruited Sand Verbena Navasota Ladies'-tresses Endangered Species Threatened Species U.S. Army Corps of Engineers (USACE) Project Area Watershed (HUC 12) Boundary Public Water Supply Groundwater Well 	<ul style="list-style-type: none"> Impaired Waters with Total Maximum Daily Load (TMDL) Impaired Waters <p>Federal Emergency Management Agency (FEMA) Flood Zone</p> <ul style="list-style-type: none"> A - 1% AE - 1% AO - 1% X - 0.2% <p>Field-Collected Data</p> <ul style="list-style-type: none"> Perennial Stream/River Intermittent Stream/River Ephemeral Stream/River Other Stream/River Lake/Pond Emergent Wetland Forested Wetland Scrub/Shrub Wetland <p>National Hydrography Dataset (NHD)</p> <ul style="list-style-type: none"> Perennial Stream/River Intermittent Stream/River Artificial Stream/Canal Lake/Pond Reservoir Swamp/Marsh <p>National Wetlands Inventory (NWI)</p> <ul style="list-style-type: none"> Freshwater Emergent Wetland Freshwater Forested/Shrub Wetland Other
---	--

This Sheet only depicts Segment 3B; Segments 3A & 3C are also located in this same area and can be referenced on Sheets 45 & 83.

*Floodplains in Freestone and Madison Counties digitized from U.S. Dept of Housing and Urban Development 1978 and 1991 Flood Hazard Boundary Maps due to lack of digitally mapped FEMA floodplains.

Data Sources: County Boundaries - U.S. Census TIGER 2015; City Boundaries - TxDOT 2013; MSD - TCEQ 2015; USACE Project Areas - USACE 2014; Public Water Supply/Impaired Waters - EPA 2016; Groundwater Wells - TWDB 2015; NHD/HUC12 - USGS 2016; Reservoirs - TWDB 2014; NWI - USFWS 2016; Floodplains - FEMA 2016; Endangered/Threatened Species - TPWD TXNDD Element of Occurrence Records (EOR) 2017; ESRI World Street Map
Aerial Imagery: USDA NAIP 2014

