

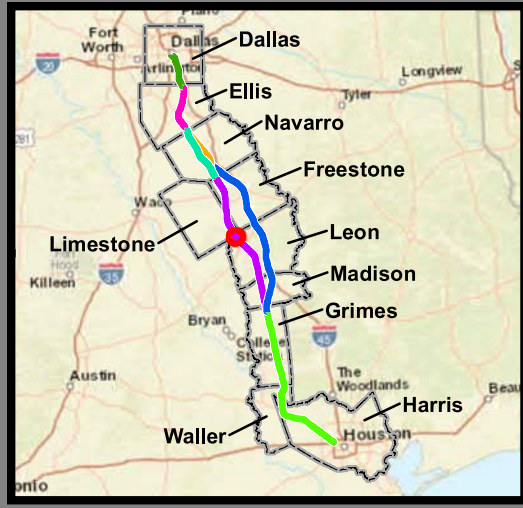
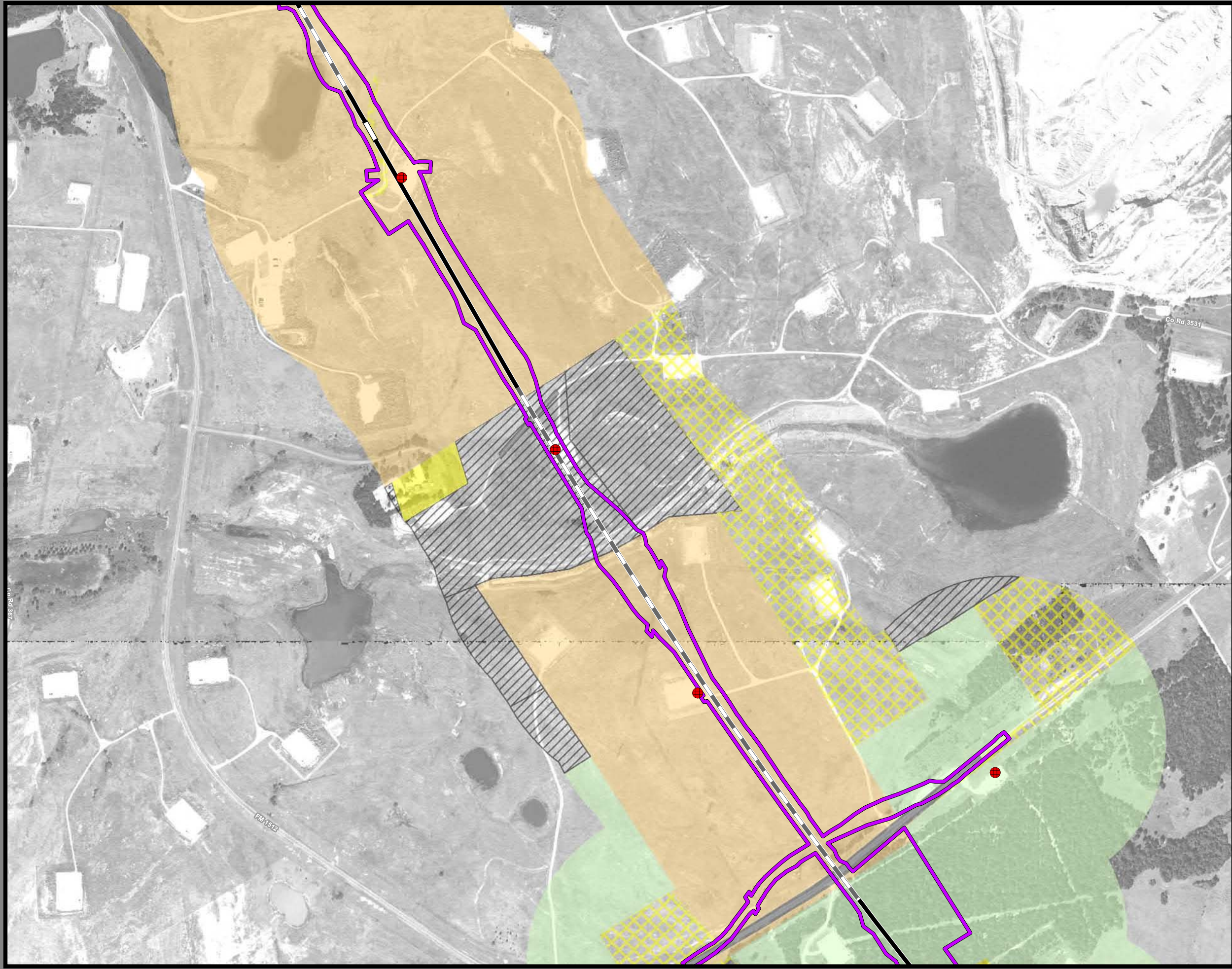
**Dallas to Houston High-Speed Rail  
Draft Environmental Impact Statement**

**Appendix D:  
Land Use  
Mapbook Set 3 of 3**



**Federal Railroad  
Administration**





**Dallas to Houston  
High-Speed Rail Project  
Land Use  
Segment 4  
Sheet 174 of 257**

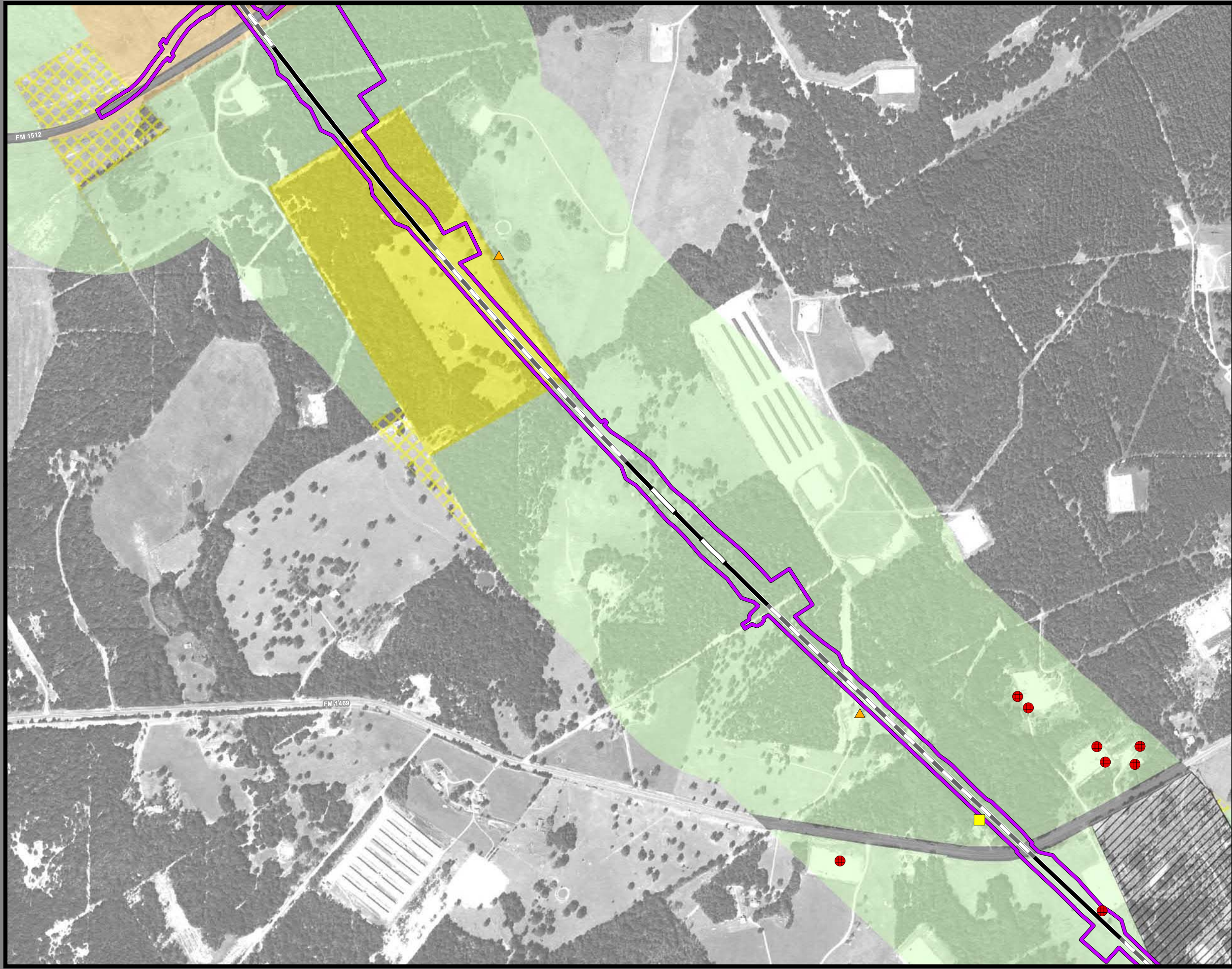
**Legend**

<p><b>Track Configuration</b></p> <ul style="list-style-type: none"> <li>— Viaduct</li> <li>— Embankment</li> <li>— Cut</li> </ul> <p><b>Limits of Disturbance</b></p> <ul style="list-style-type: none"> <li>— Segment 1</li> <li>— Segment 2A</li> <li>— Segment 2B</li> <li>— Segment 3A</li> <li>— Segment 3B</li> <li>— Segment 3C</li> <li>— Segment 4</li> <li>— Segment 5</li> </ul> <p><b>Structures</b></p> <ul style="list-style-type: none"> <li>◆ Agriculture</li> <li>▲ Barn / Shed</li> <li>■ Commercial</li> <li>■ Commercial within LOD</li> <li>◆ Community Facility</li> <li>◆ Community Facility within LOD</li> <li>✱ Cultural Resources</li> <li>● Oil / Gas</li> <li>■ Residential</li> <li>■ Residential within LOD</li> <li>⊗ Transportation</li> <li>○ Unknown Structure</li> <li>⊕ Utility</li> </ul>	<p><b>Jurisdictional Boundaries</b></p> <ul style="list-style-type: none"> <li>— County Boundary</li> <li>— City Boundary</li> <li>— USACE Bardwell Lake</li> <li>— Fort Boggy SP</li> </ul> <p><b>Land Use</b></p> <ul style="list-style-type: none"> <li>— Agriculture</li> <li>— Civic</li> <li>— Commercial</li> <li>— Forested Area</li> <li>— Industrial</li> <li>— Park</li> <li>— Residential</li> <li>— Rural</li> <li>— Transportation</li> <li>— Unclassified</li> <li>— Utility</li> <li>— Vacant</li> <li>— Water Feature</li> </ul>
--	---

\*Inaccuracies in the original county appraisal district property data may result in misalignment with aerial imagery.  
 \*Only structures within 200 feet of the LOD were evaluated for analysis purposes. Land use is only displayed within a quarter mile of the LOD.  
**Data Sources:** County/City Boundaries - TxDOT 2013; Land Use - Respective County Appraisal Districts (2011, 2015, 2016), CLS (2017)  
**Aerial Imagery:** USDA NAIP 2014







**Dallas to Houston  
High-Speed Rail Project  
Land Use  
Segment 4  
Sheet 175 of 257**

**Legend**

<b>Track Configuration</b>	<b>Jurisdictional Boundaries</b>
— Viaduct	▭ County Boundary
▬ Embankment	▭ City Boundary
▬ Cut	▭ USACE Bardwell Lake
<b>Limits of Disturbance</b>	▭ Fort Boggy SP
▭ Segment 1	<b>Land Use</b>
▭ Segment 2A	▭ Agriculture
▭ Segment 2B	▭ Civic
▭ Segment 3A	▭ Commercial
▭ Segment 3B	▭ Forested Area
▭ Segment 3C	▭ Industrial
▭ Segment 4	▭ Park
▭ Segment 5	▭ Residential
<b>Structures</b>	▭ Rural
◆ Agriculture	▭ Transportation
▲ Barn / Shed	▭ Unclassified
▭ Commercial	▭ Utility
▭ Commercial within LOD	▭ Vacant
▭ Community Facility	▭ Water Feature
▭ Community Facility within LOD	
✱ Cultural Resources	
● Oil / Gas	
▭ Residential	
▭ Residential within LOD	
⊗ Transportation	
○ Unknown Structure	
⊕ Utility	

\*Inaccuracies in the original county appraisal district property data may result in misalignment with aerial imagery.  
 \*Only structures within 200 feet of the LOD were evaluated for analysis purposes. Land use is only displayed within a quarter mile of the LOD.  
**Data Sources:** County/City Boundaries - TxDOT 2013; Land Use - Respective County Appraisal Districts (2011, 2015, 2016), CLS (2017)  
**Aerial Imagery:** USDA NAIP 2014







**Dallas to Houston  
High-Speed Rail Project  
Land Use  
Segment 4  
Sheet 176 of 257**

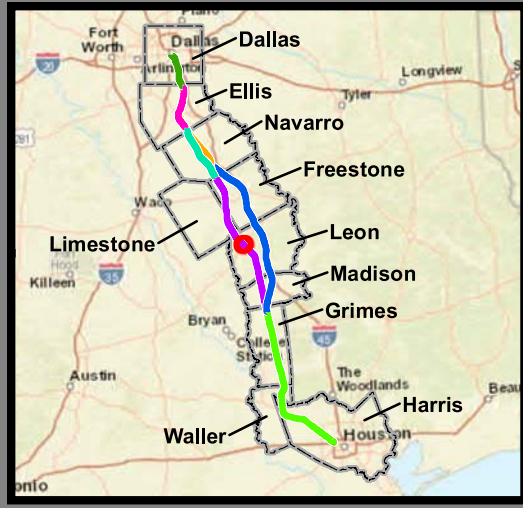
**Legend**

<p><b>Track Configuration</b></p> <ul style="list-style-type: none"> <li>— Viaduct</li> <li>— Embankment</li> <li>— Cut</li> </ul> <p><b>Limits of Disturbance</b></p> <ul style="list-style-type: none"> <li>— Segment 1</li> <li>— Segment 2A</li> <li>— Segment 2B</li> <li>— Segment 3A</li> <li>— Segment 3B</li> <li>— Segment 3C</li> <li>— Segment 4</li> <li>— Segment 5</li> </ul> <p><b>Structures</b></p> <ul style="list-style-type: none"> <li>◆ Agriculture</li> <li>▲ Barn / Shed</li> <li>■ Commercial</li> <li>■ Commercial within LOD</li> <li>◆ Community Facility</li> <li>◆ Community Facility within LOD</li> <li>✱ Cultural Resources</li> <li>● Oil / Gas</li> <li>■ Residential</li> <li>■ Residential within LOD</li> <li>⊗ Transportation</li> <li>○ Unknown Structure</li> <li>⊕ Utility</li> </ul>	<p><b>Jurisdictional Boundaries</b></p> <ul style="list-style-type: none"> <li>— County Boundary</li> <li>— City Boundary</li> <li>— USACE Bardwell Lake</li> <li>— Fort Boggy SP</li> </ul> <p><b>Land Use</b></p> <ul style="list-style-type: none"> <li>— Agriculture</li> <li>— Civic</li> <li>— Commercial</li> <li>— Forested Area</li> <li>— Industrial</li> <li>— Park</li> <li>— Residential</li> <li>— Rural</li> <li>— Transportation</li> <li>— Unclassified</li> <li>— Utility</li> <li>— Vacant</li> <li>— Water Feature</li> </ul>
--	---

\*Inaccuracies in the original county appraisal district property data may result in misalignment with aerial imagery.  
\*Only structures within 200 feet of the LOD were evaluated for analysis purposes. Land use is only displayed within a quarter mile of the LOD.  
**Data Sources:** County/City Boundaries - TxDOT 2013; Land Use - Respective County Appraisal Districts (2011, 2015, 2016), CLS (2017)  
**Aerial Imagery:** USDA NAIP 2014







**Dallas to Houston  
High-Speed Rail Project  
Land Use  
Segment 4  
Sheet 177 of 257**

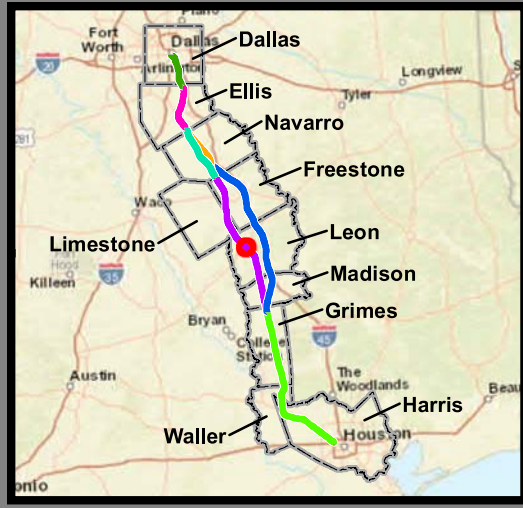
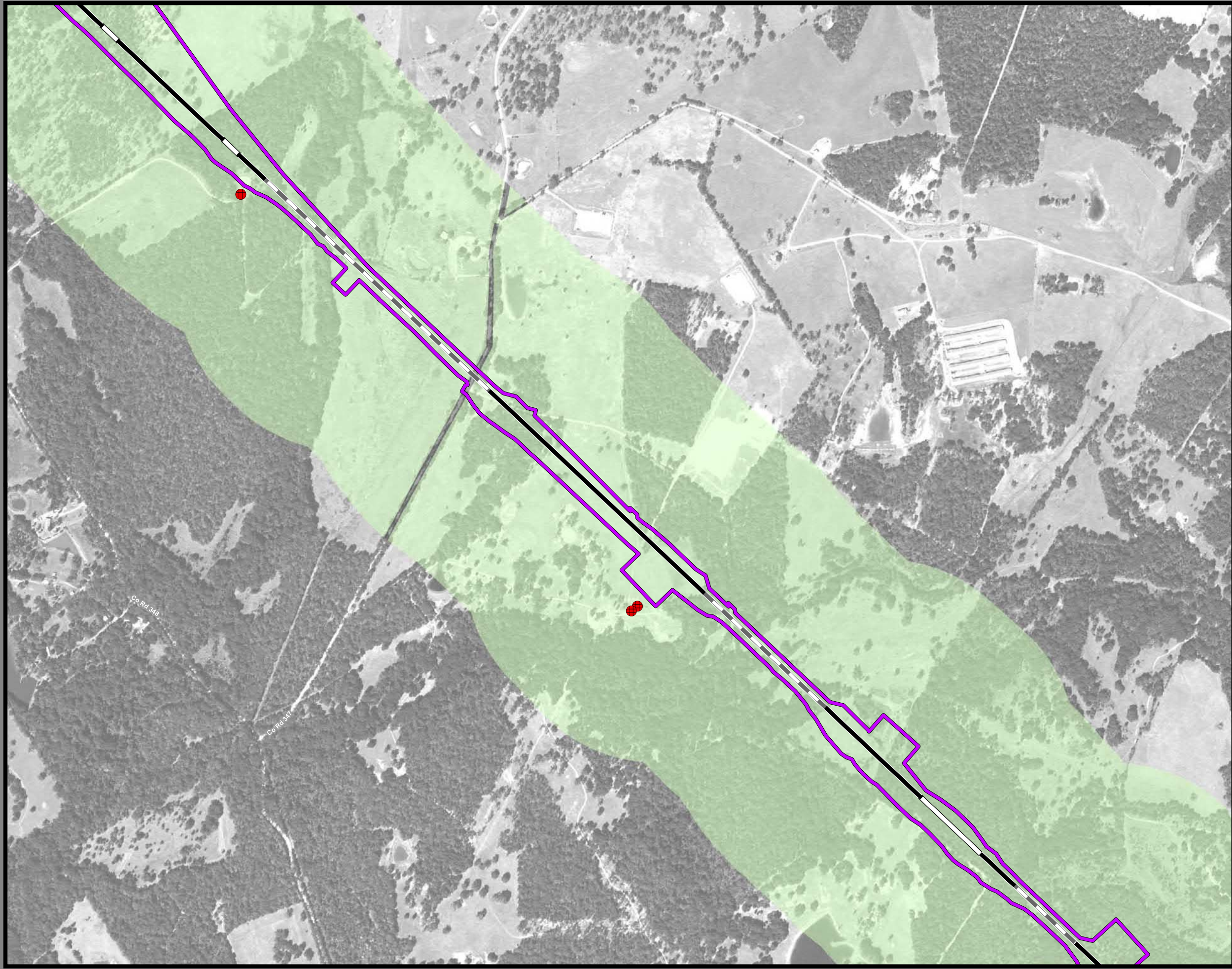
**Legend**

<p><b>Track Configuration</b></p> <ul style="list-style-type: none"> <li>— Viaduct</li> <li>— Embankment</li> <li>— Cut</li> </ul> <p><b>Limits of Disturbance</b></p> <ul style="list-style-type: none"> <li>Segment 1</li> <li>Segment 2A</li> <li>Segment 2B</li> <li>Segment 3A</li> <li>Segment 3B</li> <li>Segment 3C</li> <li>Segment 4</li> <li>Segment 5</li> </ul> <p><b>Structures</b></p> <ul style="list-style-type: none"> <li>Agriculture</li> <li>Barn / Shed</li> <li>Commercial</li> <li>Commercial within LOD</li> <li>Community Facility</li> <li>Community Facility within LOD</li> <li>Cultural Resources</li> <li>Oil / Gas</li> <li>Residential</li> <li>Residential within LOD</li> <li>Transportation</li> <li>Unknown Structure</li> <li>Utility</li> </ul>	<p><b>Jurisdictional Boundaries</b></p> <ul style="list-style-type: none"> <li>County Boundary</li> <li>City Boundary</li> <li>USACE Bardwell Lake</li> <li>Fort Boggy SP</li> </ul> <p><b>Land Use</b></p> <ul style="list-style-type: none"> <li>Agriculture</li> <li>Civic</li> <li>Commercial</li> <li>Forested Area</li> <li>Industrial</li> <li>Park</li> <li>Residential</li> <li>Rural</li> <li>Transportation</li> <li>Unclassified</li> <li>Utility</li> <li>Vacant</li> <li>Water Feature</li> </ul>
--	---

\*Inaccuracies in the original county appraisal district property data may result in misalignment with aerial imagery.  
 \*Only structures within 200 feet of the LOD were evaluated for analysis purposes. Land use is only displayed within a quarter mile of the LOD.  
**Data Sources:** County/City Boundaries - TxDOT 2013; Land Use - Respective County Appraisal Districts (2011, 2015, 2016), CLS (2017)  
**Aerial Imagery:** USDA NAIP 2014







**Dallas to Houston  
High-Speed Rail Project  
Land Use  
Segment 4  
Sheet 178 of 257**

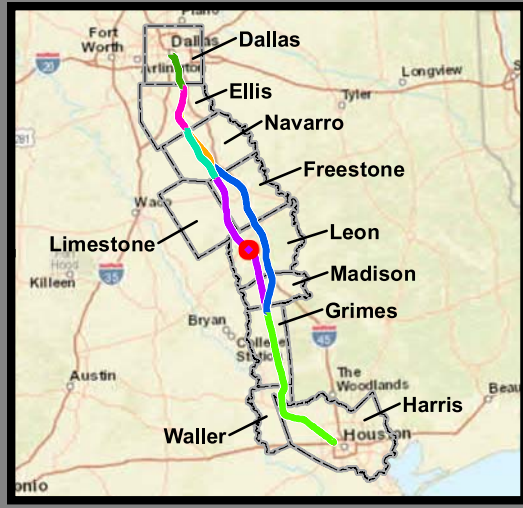
**Legend**

<b>Track Configuration</b>	<b>Jurisdictional Boundaries</b>
— Viaduct	▭ County Boundary
— Embankment	▭ City Boundary
— Cut	▭ USACE Bardwell Lake
<b>Limits of Disturbance</b>	▭ Fort Boggy SP
▭ Segment 1	<b>Land Use</b>
▭ Segment 2A	▭ Agriculture
▭ Segment 2B	▭ Civic
▭ Segment 3A	▭ Commercial
▭ Segment 3B	▭ Forested Area
▭ Segment 3C	▭ Industrial
▭ Segment 4	▭ Park
▭ Segment 5	▭ Residential
<b>Structures</b>	▭ Rural
◆ Agriculture	▭ Transportation
▲ Barn / Shed	▭ Unclassified
■ Commercial	▭ Utility
■ Commercial within LOD	▭ Vacant
◆ Community Facility	▭ Water Feature
◆ Community Facility within LOD	
✱ Cultural Resources	
● Oil / Gas	
■ Residential	
■ Residential within LOD	
⊗ Transportation	
○ Unknown Structure	
⊕ Utility	

\*Inaccuracies in the original county appraisal district property data may result in misalignment with aerial imagery.  
 \*Only structures within 200 feet of the LOD were evaluated for analysis purposes. Land use is only displayed within a quarter mile of the LOD.  
**Data Sources:** County/City Boundaries - TxDOT 2013; Land Use - Respective County Appraisal Districts (2011, 2015, 2016), CLS (2017)  
**Aerial Imagery:** USDA NAIP 2014







**Dallas to Houston  
High-Speed Rail Project  
Land Use  
Segment 4  
Sheet 179 of 257**

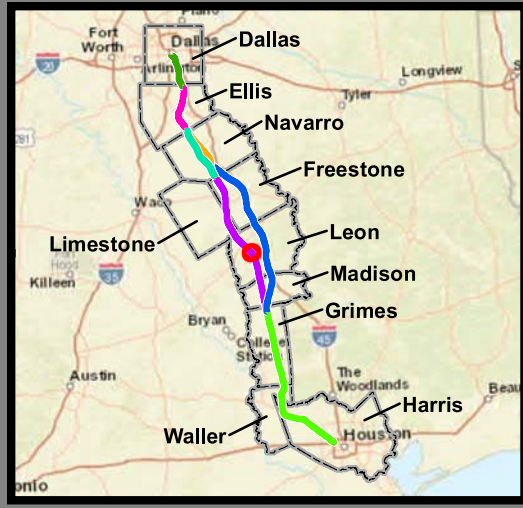
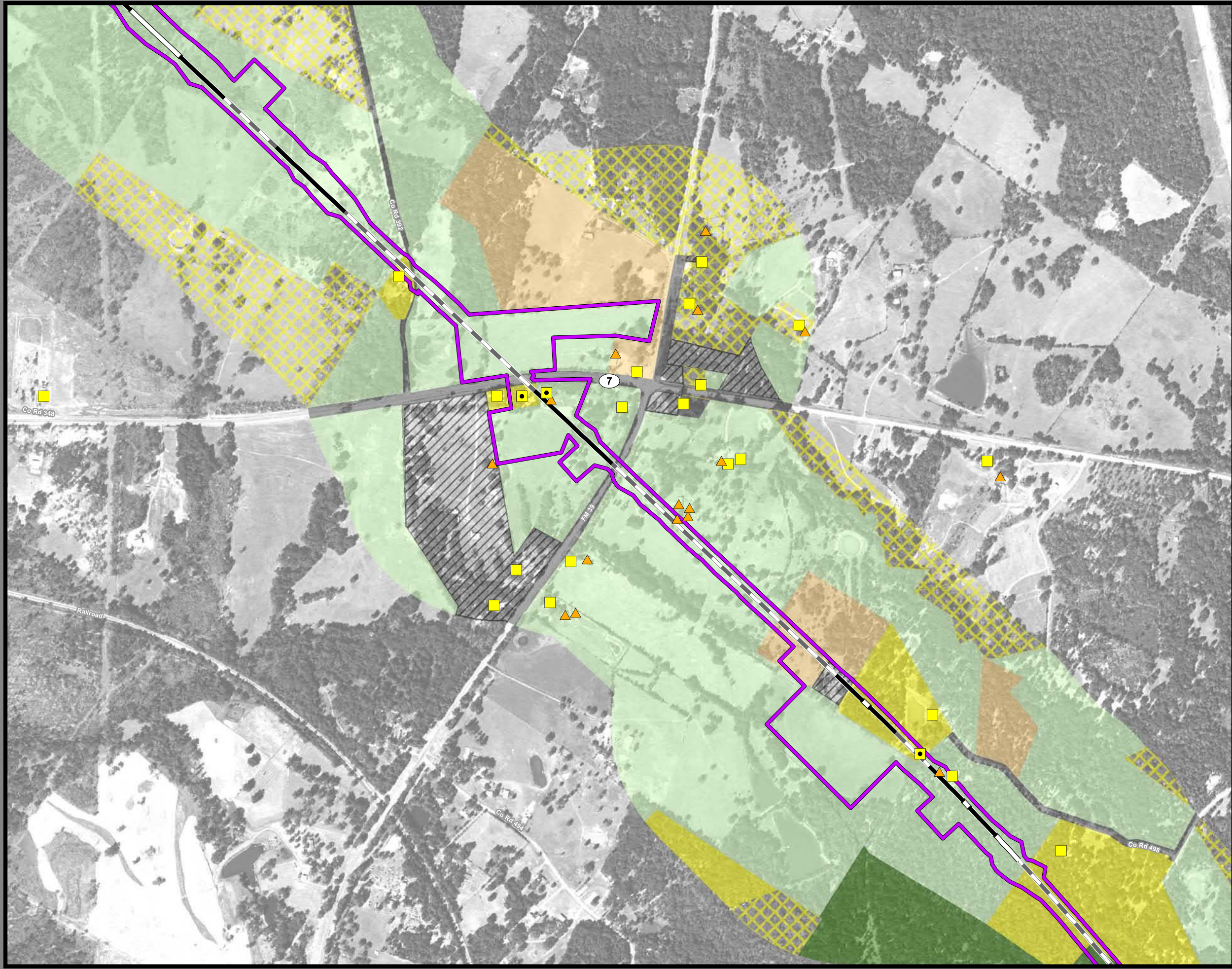
**Legend**

<p><b>Track Configuration</b></p> <ul style="list-style-type: none"> <li>— Viaduct</li> <li>— Embankment</li> <li>— Cut</li> </ul> <p><b>Limits of Disturbance</b></p> <ul style="list-style-type: none"> <li>— Segment 1</li> <li>— Segment 2A</li> <li>— Segment 2B</li> <li>— Segment 3A</li> <li>— Segment 3B</li> <li>— Segment 3C</li> <li>— Segment 4</li> <li>— Segment 5</li> </ul> <p><b>Structures</b></p> <ul style="list-style-type: none"> <li>◆ Agriculture</li> <li>▲ Barn / Shed</li> <li>■ Commercial</li> <li>■ Commercial within LOD</li> <li>■ Community Facility</li> <li>■ Community Facility within LOD</li> <li>★ Cultural Resources</li> <li>● Oil / Gas</li> <li>■ Residential</li> <li>■ Residential within LOD</li> <li>⊗ Transportation</li> <li>○ Unknown Structure</li> <li>⊕ Utility</li> </ul>	<p><b>Jurisdictional Boundaries</b></p> <ul style="list-style-type: none"> <li>— County Boundary</li> <li>— City Boundary</li> <li>— USACE Bardwell Lake</li> <li>— Fort Boggy SP</li> </ul> <p><b>Land Use</b></p> <ul style="list-style-type: none"> <li>— Agriculture</li> <li>— Civic</li> <li>— Commercial</li> <li>— Forested Area</li> <li>— Industrial</li> <li>— Park</li> <li>— Residential</li> <li>— Rural</li> <li>— Transportation</li> <li>— Unclassified</li> <li>— Utility</li> <li>— Vacant</li> <li>— Water Feature</li> </ul>
--	---

\*Inaccuracies in the original county appraisal district property data may result in misalignment with aerial imagery.  
 \*Only structures within 200 feet of the LOD were evaluated for analysis purposes. Land use is only displayed within a quarter mile of the LOD.  
**Data Sources:** County/City Boundaries - TxDOT 2013; Land Use - Respective County Appraisal Districts (2011, 2015, 2016), CLS (2017)  
**Aerial Imagery:** USDA NAIP 2014







**Dallas to Houston  
High-Speed Rail Project  
Land Use  
Segment 4  
Sheet 180 of 257**

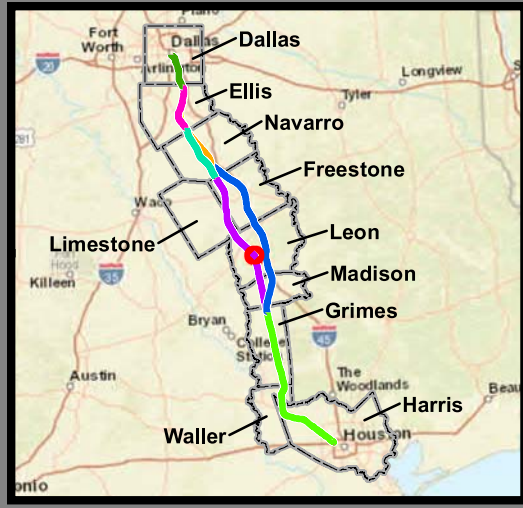
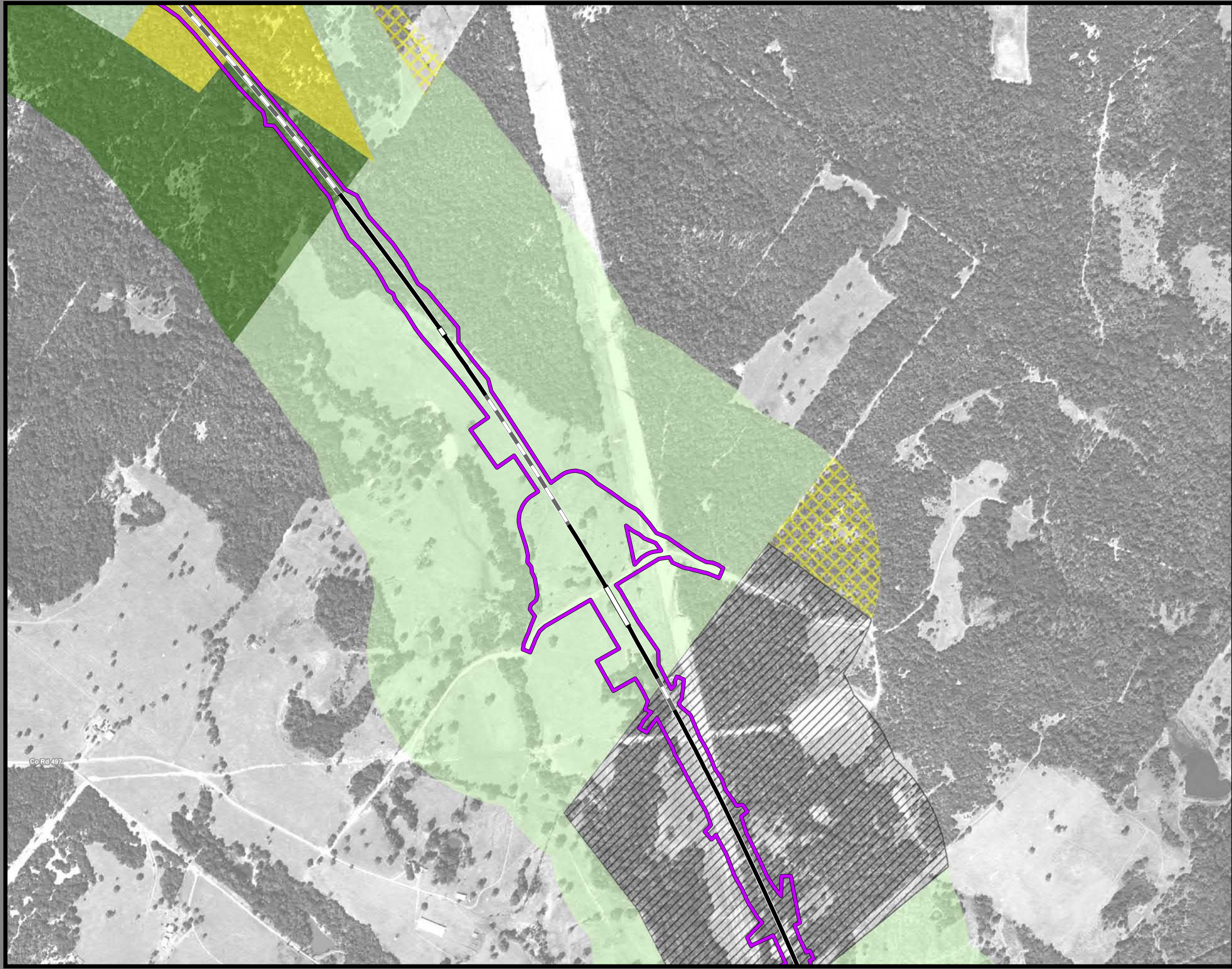
**Legend**

<b>Track Configuration</b>	<b>Jurisdictional Boundaries</b>
— Viaduct	▭ County Boundary
▬ Embankment	▭ City Boundary
▭ Cut	▭ USACE Bardwell Lake
<b>Limits of Disturbance</b>	▭ Fort Boggy SP
▭ Segment 1	<b>Land Use</b>
▭ Segment 2A	▭ Agriculture
▭ Segment 2B	▭ Civic
▭ Segment 3A	▭ Commercial
▭ Segment 3B	▭ Forested Area
▭ Segment 3C	▭ Industrial
▭ Segment 4	▭ Park
▭ Segment 5	▭ Residential
<b>Structures</b>	▭ Rural
▬ Agriculture	▭ Transportation
▴ Barn / Shed	▭ Unclassified
▭ Commercial	▭ Utility
▭ Commercial within LOD	▭ Vacant
▭ Community Facility	▭ Water Feature
▭ Community Facility within LOD	
☼ Cultural Resources	
● Oil / Gas	
▭ Residential	
▭ Residential within LOD	
⊗ Transportation	
○ Unknown Structure	
⊕ Utility	

\*Inaccuracies in the original county appraisal district property data may result in misalignment with aerial imagery.  
 \*Only structures within 200 feet of the LOD were evaluated for analysis purposes. Land use is only displayed within a quarter mile of the LOD.  
**Data Sources:** County/City Boundaries - TxDOT 2013; Land Use - Respective County Appraisal Districts (2011, 2015, 2016), CLS (2017)  
**Aerial Imagery:** USDA NAIP 2014







**Dallas to Houston  
High-Speed Rail Project  
Land Use  
Segment 4  
Sheet 181 of 257**

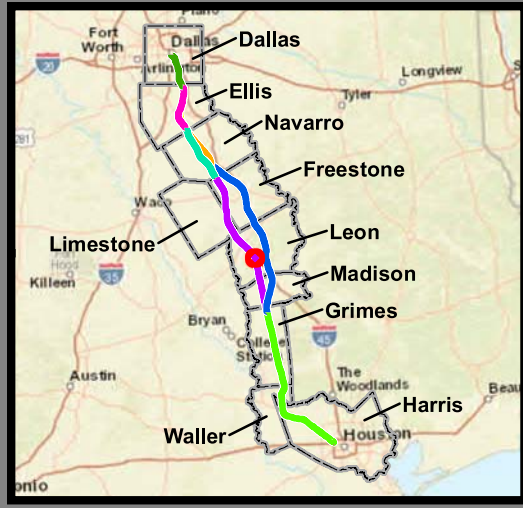
**Legend**

<b>Track Configuration</b>	<b>Jurisdictional Boundaries</b>
— Viaduct	▭ County Boundary
▬ Embankment	▭ City Boundary
▬ Cut	▭ USACE Bardwell Lake
<b>Limits of Disturbance</b>	▭ Fort Boggy SP
▭ Segment 1	<b>Land Use</b>
▭ Segment 2A	▭ Agriculture
▭ Segment 2B	▭ Civic
▭ Segment 3A	▭ Commercial
▭ Segment 3B	▭ Forested Area
▭ Segment 3C	▭ Industrial
▭ Segment 4	▭ Park
▭ Segment 5	▭ Residential
<b>Structures</b>	▭ Rural
◆ Agriculture	▭ Transportation
▲ Barn / Shed	▭ Unclassified
■ Commercial	▭ Utility
■ Commercial within LOD	▭ Vacant
◆ Community Facility	▭ Water Feature
◆ Community Facility within LOD	
✱ Cultural Resources	
● Oil / Gas	
■ Residential	
■ Residential within LOD	
⊗ Transportation	
○ Unknown Structure	
⊕ Utility	

\*Inaccuracies in the original county appraisal district property data may result in misalignment with aerial imagery.  
\*Only structures within 200 feet of the LOD were evaluated for analysis purposes. Land use is only displayed within a quarter mile of the LOD.  
**Data Sources:** County/City Boundaries - TxDOT 2013; Land Use - Respective County Appraisal Districts (2011, 2015, 2016), CLS (2017)  
**Aerial Imagery:** USDA NAIP 2014







**Dallas to Houston  
High-Speed Rail Project  
Land Use  
Segment 4  
Sheet 182 of 257**

**Legend**

<b>Track Configuration</b>	<b>Jurisdictional Boundaries</b>
— Viaduct	▭ County Boundary
— Embankment	▭ City Boundary
— Cut	▭ USACE Bardwell Lake
<b>Limits of Disturbance</b>	▭ Fort Boggy SP
▭ Segment 1	<b>Land Use</b>
▭ Segment 2A	▭ Agriculture
▭ Segment 2B	▭ Civic
▭ Segment 3A	▭ Commercial
▭ Segment 3B	▭ Forested Area
▭ Segment 3C	▭ Industrial
▭ Segment 4	▭ Park
▭ Segment 5	▭ Residential
<b>Structures</b>	▭ Rural
◆ Agriculture	▭ Transportation
▲ Barn / Shed	▭ Unclassified
■ Commercial	▭ Utility
■ Commercial within LOD	▭ Vacant
◆ Community Facility	▭ Water Feature
◆ Community Facility within LOD	
✱ Cultural Resources	
● Oil / Gas	
■ Residential	
■ Residential within LOD	
⊗ Transportation	
○ Unknown Structure	
⊕ Utility	

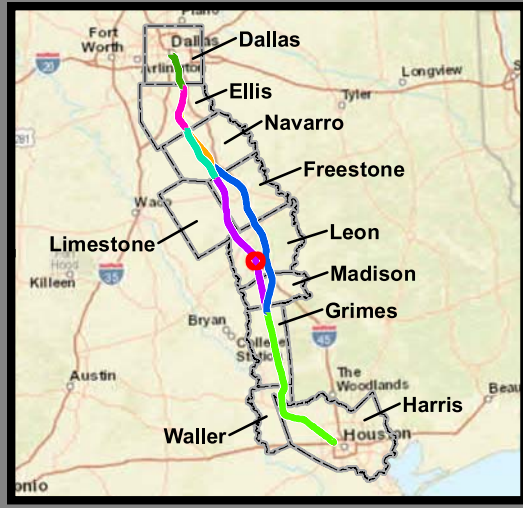
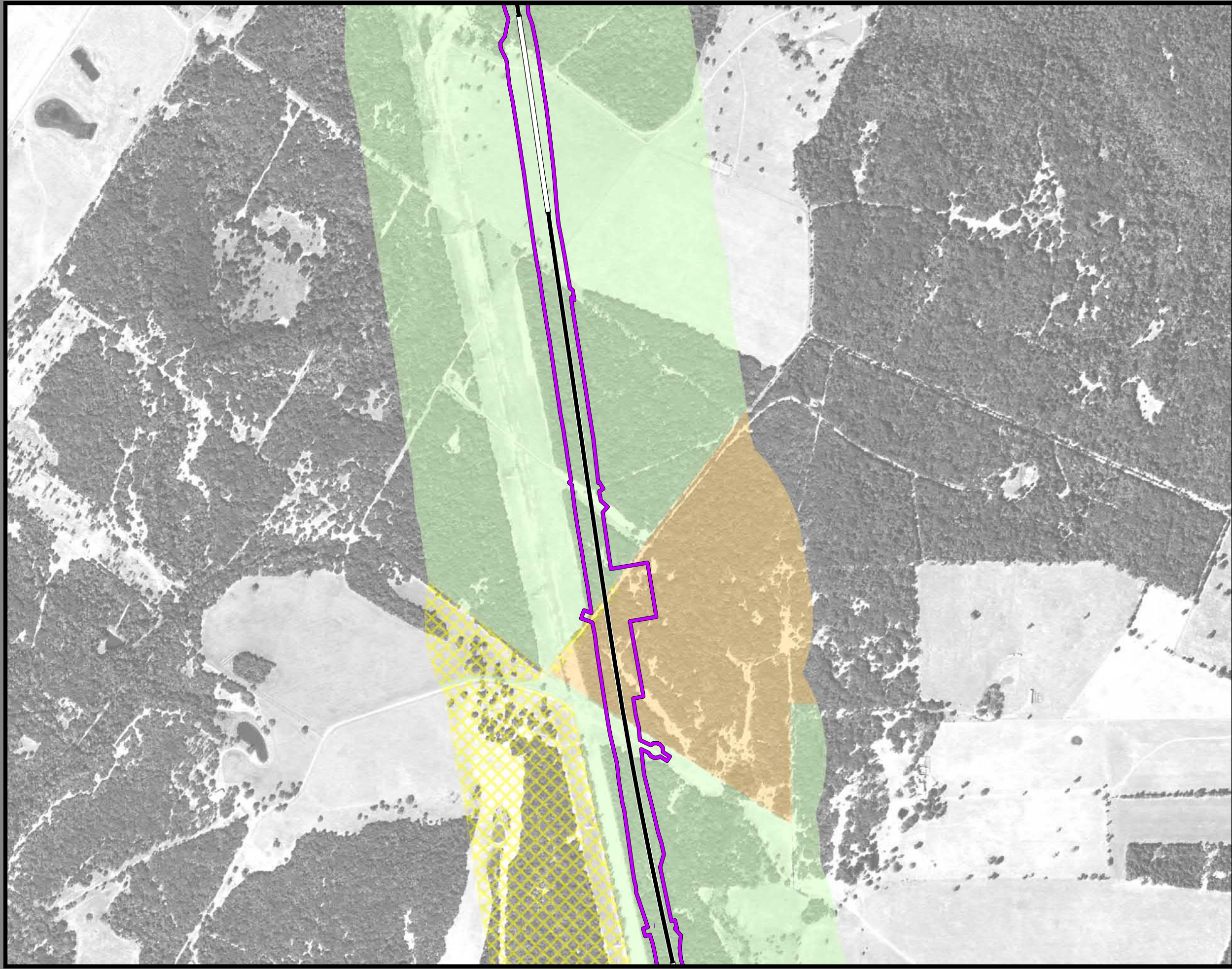
\*\*\*This Sheet only depicts Segment 4; Segment 3C is also located in this same area and can be referenced on Sheet 131.\*\*\*

\*Inaccuracies in the original county appraisal district property data may result in misalignment with aerial imagery.  
\*Only structures within 200 feet of the LOD were evaluated for analysis purposes. Land use is only displayed within a quarter mile of the LOD.

**Data Sources:** County/City Boundaries - TxDOT 2013; Land Use - Respective County Appraisal Districts (2011, 2015, 2016), CLS (2017)  
**Aerial Imagery:** USDA NAIP 2014







**Dallas to Houston  
High-Speed Rail Project  
Land Use  
Segment 4  
Sheet 183 of 257**

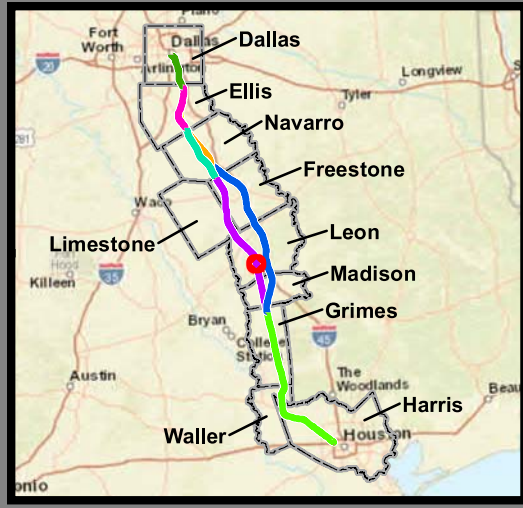
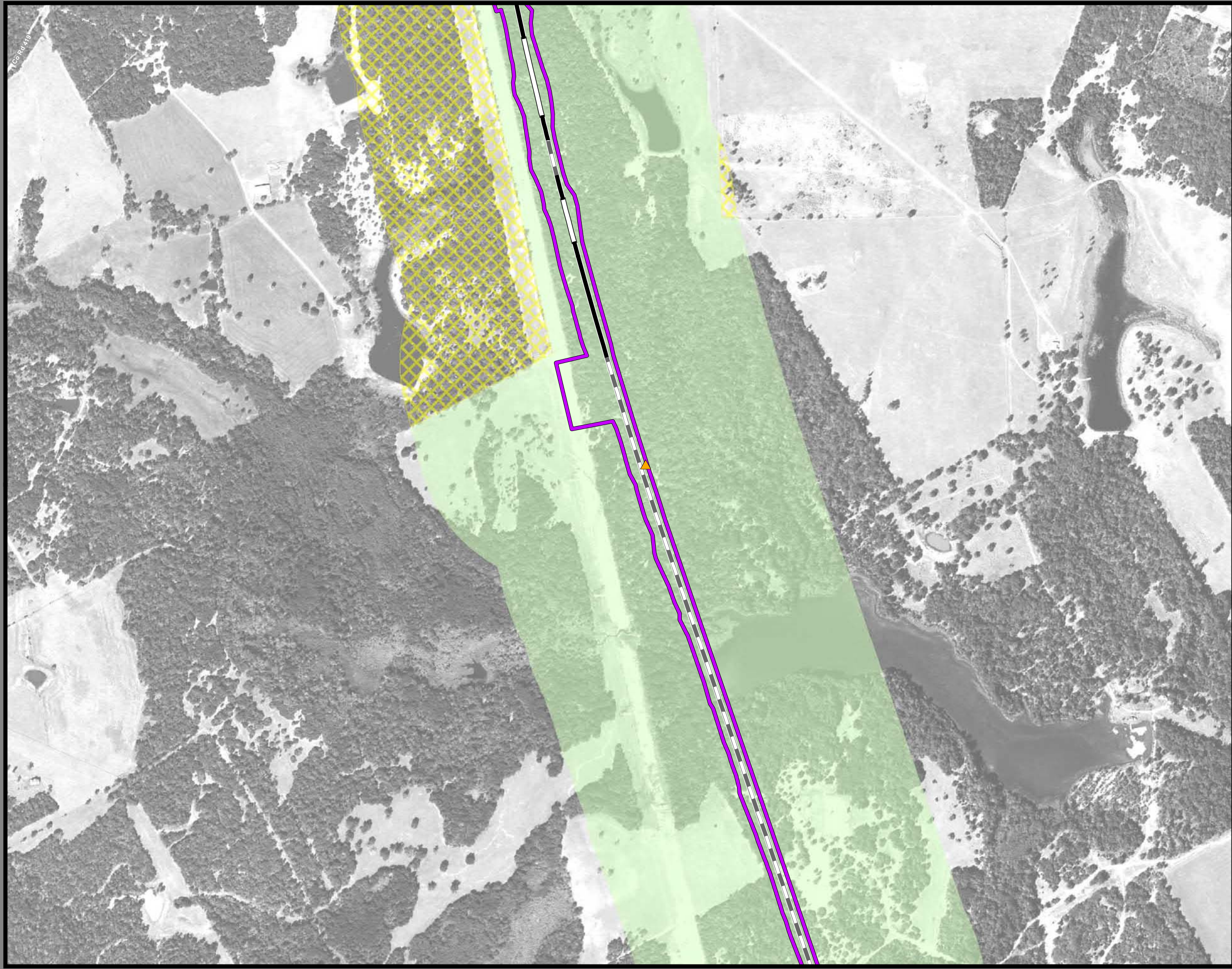
**Legend**

<b>Track Configuration</b>	<b>Jurisdictional Boundaries</b>
— Viaduct	▭ County Boundary
— Embankment	▭ City Boundary
— Cut	▭ USACE Bardwell Lake
<b>Limits of Disturbance</b>	▭ Fort Boggy SP
▭ Segment 1	<b>Land Use</b>
▭ Segment 2A	▭ Agriculture
▭ Segment 2B	▭ Civic
▭ Segment 3A	▭ Commercial
▭ Segment 3B	▭ Forested Area
▭ Segment 3C	▭ Industrial
▭ Segment 4	▭ Park
▭ Segment 5	▭ Residential
<b>Structures</b>	▭ Rural
◆ Agriculture	▭ Transportation
▲ Barn / Shed	▭ Unclassified
■ Commercial	▭ Utility
■ Commercial within LOD	▭ Vacant
◆ Community Facility	▭ Water Feature
◆ Community Facility within LOD	
✱ Cultural Resources	
● Oil / Gas	
■ Residential	
■ Residential within LOD	
⊗ Transportation	
○ Unknown Structure	
⊕ Utility	

\*Inaccuracies in the original county appraisal district property data may result in misalignment with aerial imagery.  
 \*Only structures within 200 feet of the LOD were evaluated for analysis purposes. Land use is only displayed within a quarter mile of the LOD.  
**Data Sources:** County/City Boundaries - TxDOT 2013; Land Use - Respective County Appraisal Districts (2011, 2015, 2016), CLS (2017)  
**Aerial Imagery:** USDA NAIP 2014







**Dallas to Houston  
High-Speed Rail Project  
Land Use  
Segment 4  
Sheet 184 of 257**

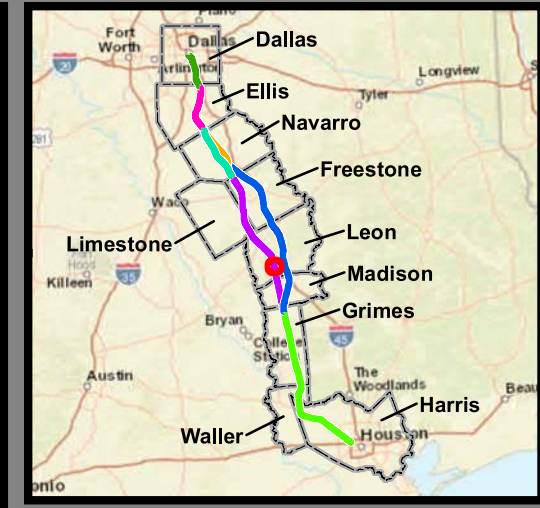
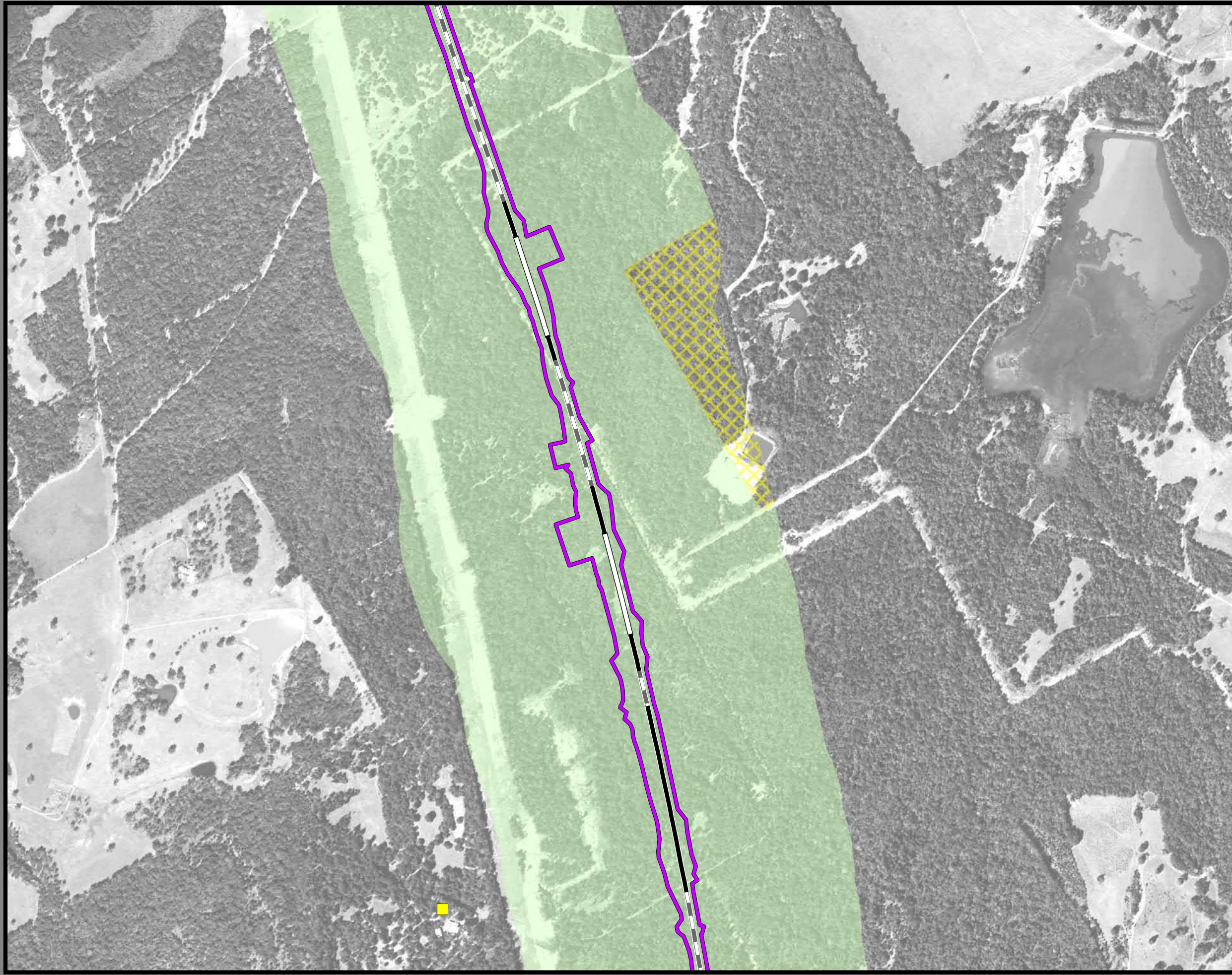
**Legend**

<b>Track Configuration</b>	<b>Jurisdictional Boundaries</b>
— Viaduct	▭ County Boundary
— Embankment	▭ City Boundary
— Cut	▭ USACE Bardwell Lake
▭ Fort Boggy SP	
<b>Limits of Disturbance</b>	<b>Land Use</b>
▭ Segment 1	▭ Agriculture
▭ Segment 2A	▭ Civic
▭ Segment 2B	▭ Commercial
▭ Segment 3A	▭ Forested Area
▭ Segment 3B	▭ Industrial
▭ Segment 3C	▭ Park
▭ Segment 4	▭ Residential
▭ Segment 5	▭ Rural
<b>Structures</b>	▭ Transportation
◆ Agriculture	▭ Unclassified
▲ Barn / Shed	▭ Utility
▭ Commercial	▭ Vacant
▭ Commercial within LOD	▭ Water Feature
▭ Community Facility	
▭ Community Facility within LOD	
✱ Cultural Resources	
● Oil / Gas	
▭ Residential	
▭ Residential within LOD	
⊗ Transportation	
○ Unknown Structure	
⊕ Utility	

\*Inaccuracies in the original county appraisal district property data may result in misalignment with aerial imagery.  
 \*Only structures within 200 feet of the LOD were evaluated for analysis purposes. Land use is only displayed within a quarter mile of the LOD.  
**Data Sources:** County/City Boundaries - TxDOT 2013; Land Use - Respective County Appraisal Districts (2011, 2015, 2016), CLS (2017)  
**Aerial Imagery:** USDA NAIP 2014





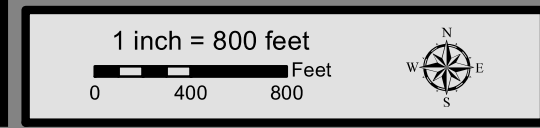


**Dallas to Houston  
High-Speed Rail Project  
Land Use  
Segment 4  
Sheet 185 of 257**

**Legend**

<b>Track Configuration</b>	<b>Jurisdictional Boundaries</b>
— Viaduct	▭ County Boundary
▬ Embankment	▭ City Boundary
▬ Cut	▭ USACE Bardwell Lake
<b>Limits of Disturbance</b>	▭ Fort Boggy SP
▭ Segment 1	<b>Land Use</b>
▭ Segment 2A	▭ Agriculture
▭ Segment 2B	▭ Civic
▭ Segment 3A	▭ Commercial
▭ Segment 3B	▭ Forested Area
▭ Segment 3C	▭ Industrial
▭ Segment 4	▭ Park
▭ Segment 5	▭ Residential
<b>Structures</b>	▭ Rural
◆ Agriculture	▭ Transportation
▲ Barn / Shed	▭ Unclassified
▭ Commercial	▭ Utility
▭ Commercial within LOD	▭ Vacant
▭ Community Facility	▭ Water Feature
▭ Community Facility within LOD	
✱ Cultural Resources	
● Oil / Gas	
▭ Residential	
▭ Residential within LOD	
⊗ Transportation	
○ Unknown Structure	
⊕ Utility	

\*Inaccuracies in the original county appraisal district property data may result in misalignment with aerial imagery.  
 \*Only structures within 200 feet of the LOD were evaluated for analysis purposes. Land use is only displayed within a quarter mile of the LOD.  
**Data Sources:** County/City Boundaries - TxDOT 2013; Land Use - Respective County Appraisal Districts (2011, 2015, 2016), CLS (2017)  
**Aerial Imagery:** USDA NAIP 2014







**Dallas to Houston  
High-Speed Rail Project  
Land Use  
Segment 4  
Sheet 186 of 257**

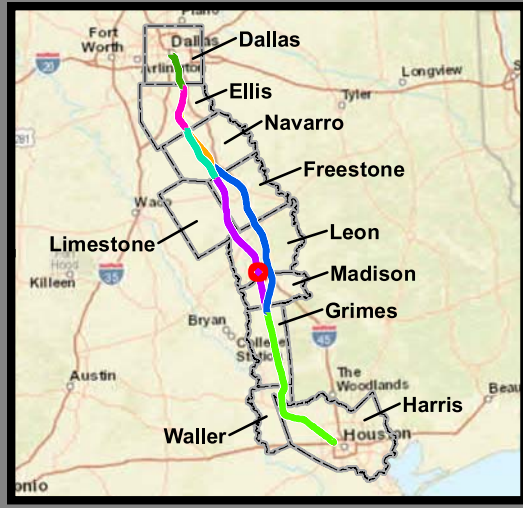
**Legend**

<p><b>Track Configuration</b></p> <ul style="list-style-type: none"> <li>— Viaduct</li> <li>— Embankment</li> <li>— Cut</li> </ul> <p><b>Limits of Disturbance</b></p> <ul style="list-style-type: none"> <li>— Segment 1</li> <li>— Segment 2A</li> <li>— Segment 2B</li> <li>— Segment 3A</li> <li>— Segment 3B</li> <li>— Segment 3C</li> <li>— Segment 4</li> <li>— Segment 5</li> </ul> <p><b>Structures</b></p> <ul style="list-style-type: none"> <li>◆ Agriculture</li> <li>▲ Barn / Shed</li> <li>■ Commercial</li> <li>■ Commercial within LOD</li> <li>◆ Community Facility</li> <li>◆ Community Facility within LOD</li> <li>✱ Cultural Resources</li> <li>● Oil / Gas</li> <li>■ Residential</li> <li>■ Residential within LOD</li> <li>⊗ Transportation</li> <li>○ Unknown Structure</li> <li>⊕ Utility</li> </ul>	<p><b>Jurisdictional Boundaries</b></p> <ul style="list-style-type: none"> <li>— County Boundary</li> <li>— City Boundary</li> <li>— USACE Bardwell Lake</li> <li>— Fort Boggy SP</li> </ul> <p><b>Land Use</b></p> <ul style="list-style-type: none"> <li>— Agriculture</li> <li>— Civic</li> <li>— Commercial</li> <li>— Forested Area</li> <li>— Industrial</li> <li>— Park</li> <li>— Residential</li> <li>— Rural</li> <li>— Transportation</li> <li>— Unclassified</li> <li>— Utility</li> <li>— Vacant</li> <li>— Water Feature</li> </ul>
--	---

\*Inaccuracies in the original county appraisal district property data may result in misalignment with aerial imagery.  
 \*Only structures within 200 feet of the LOD were evaluated for analysis purposes. Land use is only displayed within a quarter mile of the LOD.  
**Data Sources:** County/City Boundaries - TxDOT 2013; Land Use - Respective County Appraisal Districts (2011, 2015, 2016), CLS (2017)  
**Aerial Imagery:** USDA NAIP 2014







**Dallas to Houston  
High-Speed Rail Project  
Land Use  
Segment 4  
Sheet 187 of 257**

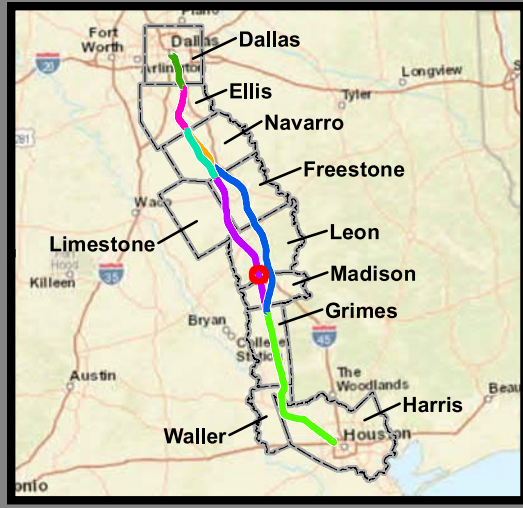
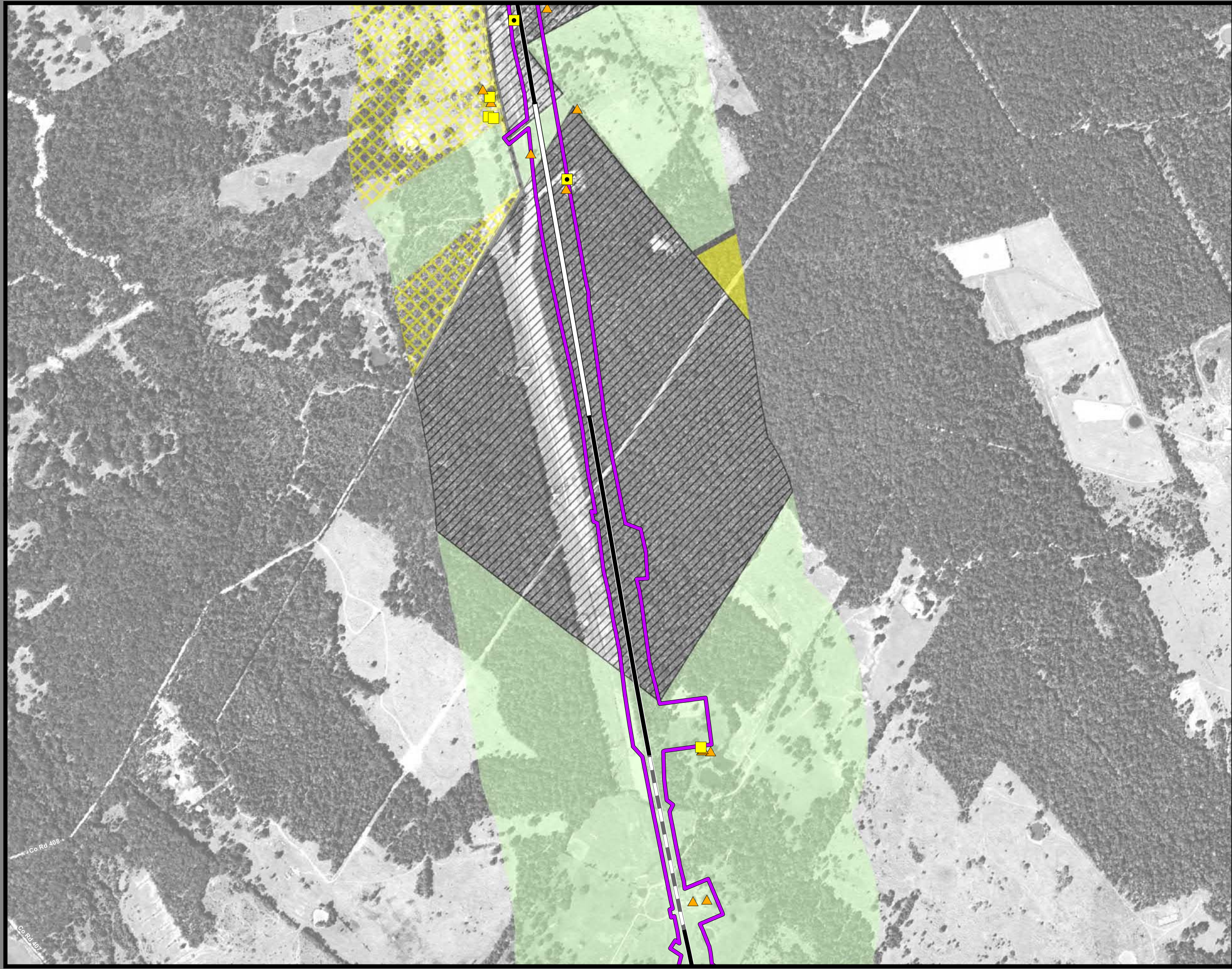
**Legend**

<p><b>Track Configuration</b></p> <ul style="list-style-type: none"> <li>— Viaduct</li> <li>— Embankment</li> <li>— Cut</li> </ul> <p><b>Limits of Disturbance</b></p> <ul style="list-style-type: none"> <li>— Segment 1</li> <li>— Segment 2A</li> <li>— Segment 2B</li> <li>— Segment 3A</li> <li>— Segment 3B</li> <li>— Segment 3C</li> <li>— Segment 4</li> <li>— Segment 5</li> </ul> <p><b>Structures</b></p> <ul style="list-style-type: none"> <li>◆ Agriculture</li> <li>▲ Barn / Shed</li> <li>■ Commercial</li> <li>■ Commercial within LOD</li> <li>◆ Community Facility</li> <li>◆ Community Facility within LOD</li> <li>✱ Cultural Resources</li> <li>● Oil / Gas</li> <li>■ Residential</li> <li>■ Residential within LOD</li> <li>⊗ Transportation</li> <li>○ Unknown Structure</li> <li>⊕ Utility</li> </ul>	<p><b>Jurisdictional Boundaries</b></p> <ul style="list-style-type: none"> <li>— County Boundary</li> <li>— City Boundary</li> <li>— USACE Bardwell Lake</li> <li>— Fort Boggy SP</li> </ul> <p><b>Land Use</b></p> <ul style="list-style-type: none"> <li>— Agriculture</li> <li>— Civic</li> <li>— Commercial</li> <li>— Forested Area</li> <li>— Industrial</li> <li>— Park</li> <li>— Residential</li> <li>— Rural</li> <li>— Transportation</li> <li>— Unclassified</li> <li>— Utility</li> <li>— Vacant</li> <li>— Water Feature</li> </ul>
--	---

\*Inaccuracies in the original county appraisal district property data may result in misalignment with aerial imagery.  
\*Only structures within 200 feet of the LOD were evaluated for analysis purposes. Land use is only displayed within a quarter mile of the LOD.  
**Data Sources:** County/City Boundaries - TxDOT 2013; Land Use - Respective County Appraisal Districts (2011, 2015, 2016), CLS (2017)  
**Aerial Imagery:** USDA NAIP 2014







**Dallas to Houston  
High-Speed Rail Project  
Land Use  
Segment 4  
Sheet 188 of 257**

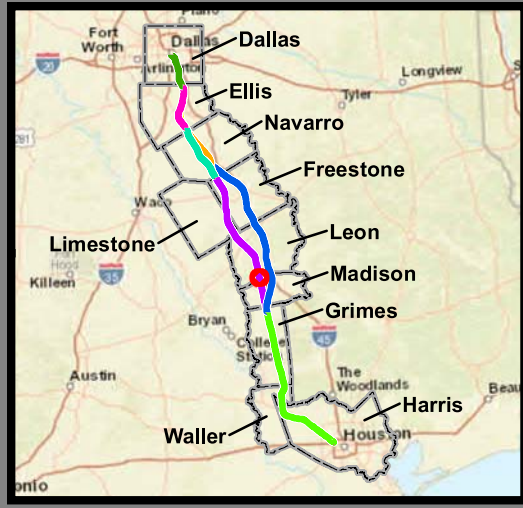
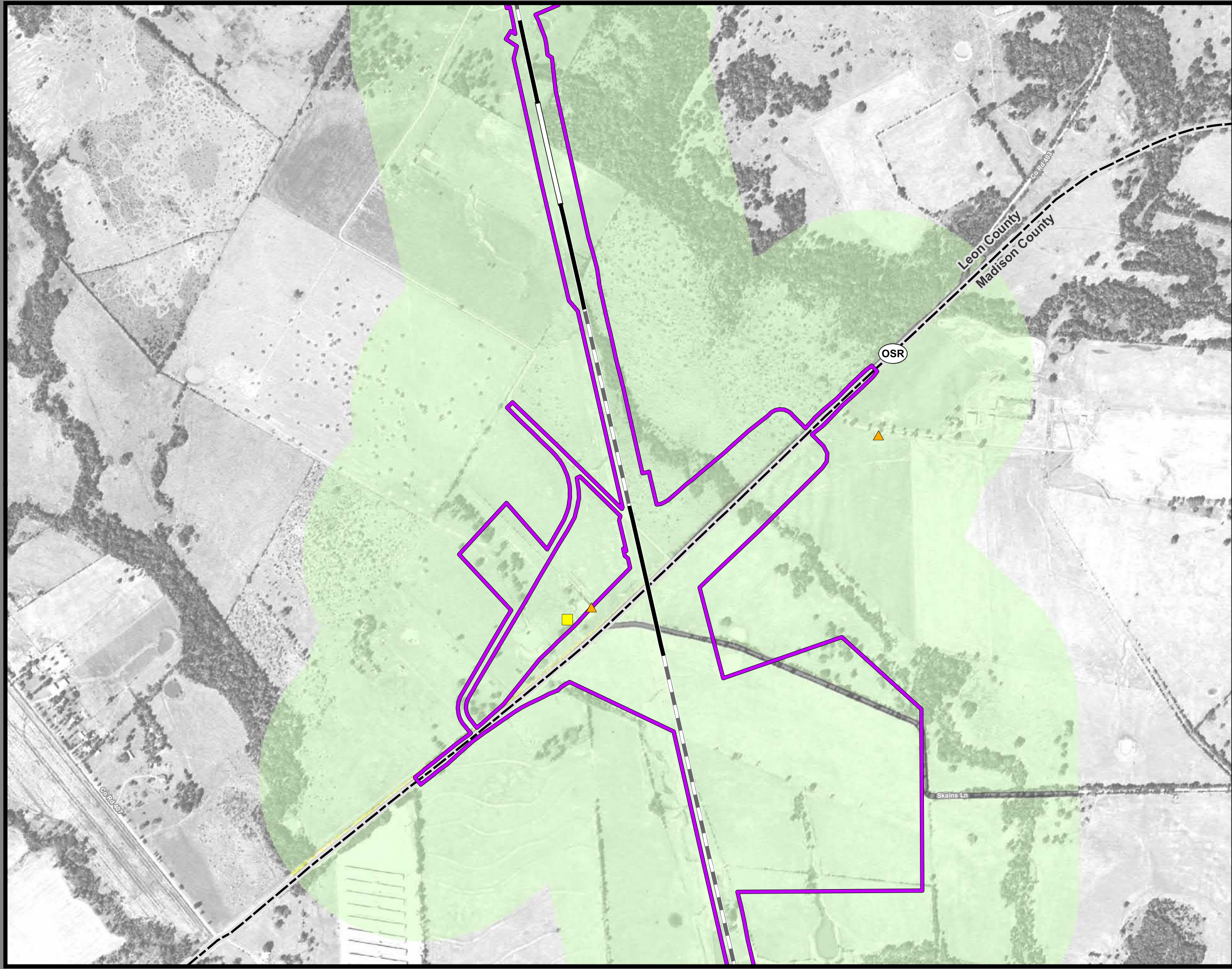
**Legend**

<b>Track Configuration</b>	<b>Jurisdictional Boundaries</b>
— Viaduct	▭ County Boundary
— Embankment	▭ City Boundary
— Cut	▭ USACE Bardwell Lake
	▭ Fort Boggy SP
<b>Limits of Disturbance</b>	<b>Land Use</b>
▭ Segment 1	▭ Agriculture
▭ Segment 2A	▭ Civic
▭ Segment 2B	▭ Commercial
▭ Segment 3A	▭ Forested Area
▭ Segment 3B	▭ Industrial
▭ Segment 3C	▭ Park
▭ Segment 4	▭ Residential
▭ Segment 5	▭ Rural
<b>Structures</b>	▭ Transportation
◆ Agriculture	▭ Unclassified
▲ Barn / Shed	▭ Utility
■ Commercial	▭ Vacant
■ Commercial within LOD	▭ Water Feature
◆ Community Facility	
◆ Community Facility within LOD	
✱ Cultural Resources	
● Oil / Gas	
■ Residential	
■ Residential within LOD	
⊗ Transportation	
○ Unknown Structure	
⊕ Utility	

\*Inaccuracies in the original county appraisal district property data may result in misalignment with aerial imagery.  
 \*Only structures within 200 feet of the LOD were evaluated for analysis purposes. Land use is only displayed within a quarter mile of the LOD.  
**Data Sources:** County/City Boundaries - TxDOT 2013; Land Use - Respective County Appraisal Districts (2011, 2015, 2016), CLS (2017)  
**Aerial Imagery:** USDA NAIP 2014







**Dallas to Houston  
High-Speed Rail Project  
Land Use  
Segment 4  
Sheet 189 of 257**

**Legend**

<p><b>Track Configuration</b></p> <ul style="list-style-type: none"> <li>— Viaduct</li> <li>— Embankment</li> <li>— Cut</li> </ul> <p><b>Limits of Disturbance</b></p> <ul style="list-style-type: none"> <li>Segment 1</li> <li>Segment 2A</li> <li>Segment 2B</li> <li>Segment 3A</li> <li>Segment 3B</li> <li>Segment 3C</li> <li>Segment 4</li> <li>Segment 5</li> </ul> <p><b>Structures</b></p> <ul style="list-style-type: none"> <li>Agriculture</li> <li>Barn / Shed</li> <li>Commercial</li> <li>Commercial within LOD</li> <li>Community Facility</li> <li>Community Facility within LOD</li> <li>Cultural Resources</li> <li>Oil / Gas</li> <li>Residential</li> <li>Residential within LOD</li> <li>Transportation</li> <li>Unknown Structure</li> <li>Utility</li> </ul>	<p><b>Jurisdictional Boundaries</b></p> <ul style="list-style-type: none"> <li>County Boundary</li> <li>City Boundary</li> <li>USACE Bardwell Lake</li> <li>Fort Boggy SP</li> </ul> <p><b>Land Use</b></p> <ul style="list-style-type: none"> <li>Agriculture</li> <li>Civic</li> <li>Commercial</li> <li>Forested Area</li> <li>Industrial</li> <li>Park</li> <li>Residential</li> <li>Rural</li> <li>Transportation</li> <li>Unclassified</li> <li>Utility</li> <li>Vacant</li> <li>Water Feature</li> </ul>
--	---

\*Inaccuracies in the original county appraisal district property data may result in misalignment with aerial imagery.  
 \*Only structures within 200 feet of the LOD were evaluated for analysis purposes. Land use is only displayed within a quarter mile of the LOD.  
**Data Sources:** County/City Boundaries - TxDOT 2013; Land Use - Respective County Appraisal Districts (2011, 2015, 2016), CLS (2017)  
**Aerial Imagery:** USDA NAIP 2014







**Dallas to Houston  
High-Speed Rail Project  
Land Use  
Segment 4  
Sheet 190 of 257**

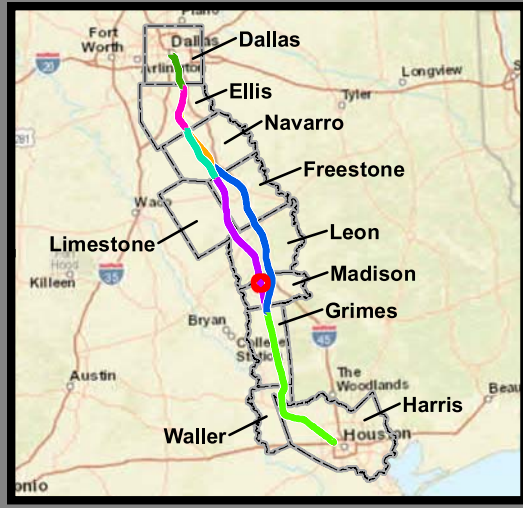
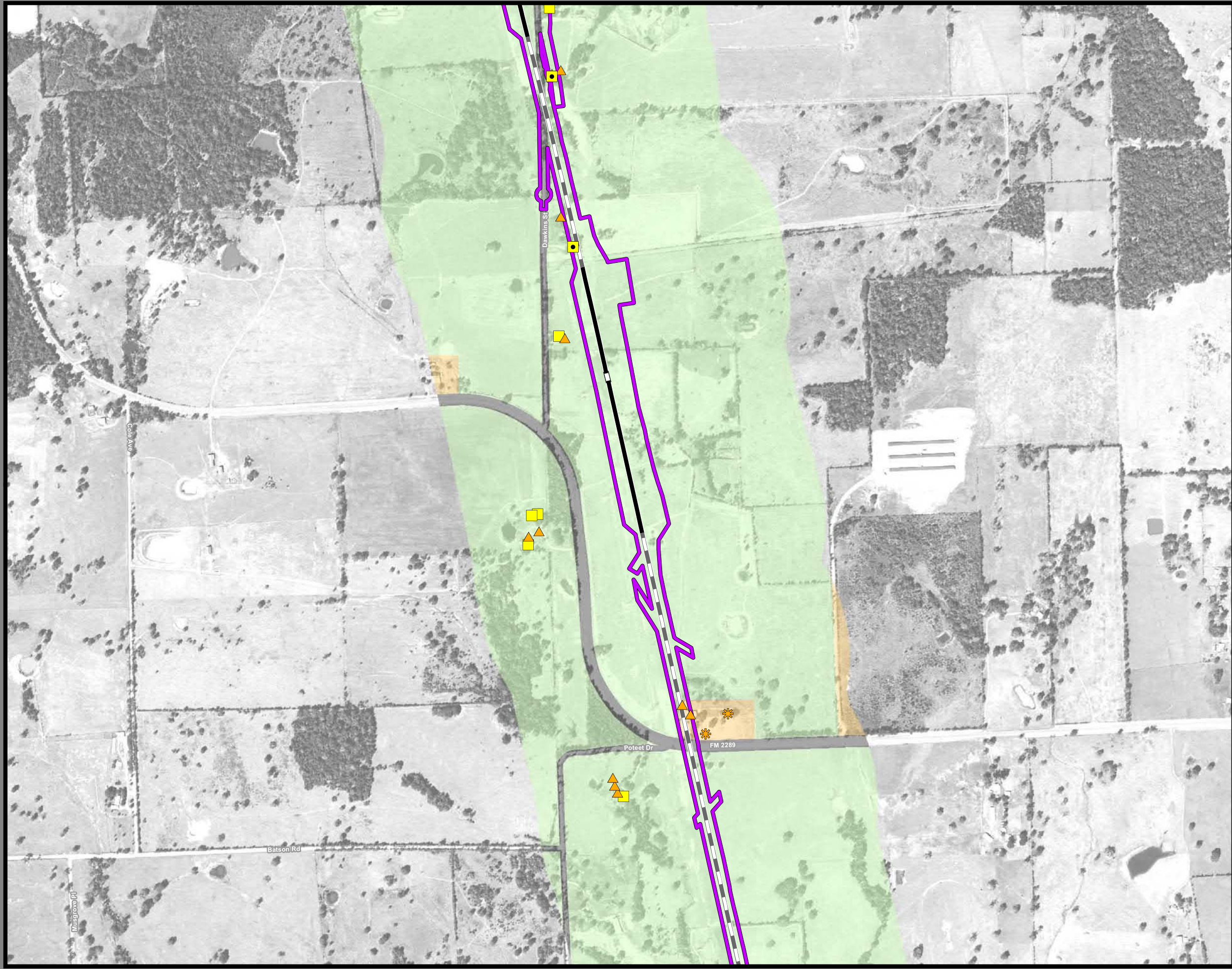
**Legend**

<b>Track Configuration</b>	<b>Jurisdictional Boundaries</b>
— Viaduct	▭ County Boundary
▬ Embankment	▭ City Boundary
▬ Cut	▭ USACE Bardwell Lake
<b>Limits of Disturbance</b>	▭ Fort Boggy SP
▭ Segment 1	<b>Land Use</b>
▭ Segment 2A	▭ Agriculture
▭ Segment 2B	▭ Civic
▭ Segment 3A	▭ Commercial
▭ Segment 3B	▭ Forested Area
▭ Segment 3C	▭ Industrial
▭ Segment 4	▭ Park
▭ Segment 5	▭ Residential
<b>Structures</b>	▭ Rural
◆ Agriculture	▭ Transportation
▲ Barn / Shed	▭ Unclassified
■ Commercial	▭ Utility
■ Commercial within LOD	▭ Vacant
◆ Community Facility	▭ Water Feature
◆ Community Facility within LOD	
✱ Cultural Resources	
● Oil / Gas	
■ Residential	
■ Residential within LOD	
⊗ Transportation	
○ Unknown Structure	
⊕ Utility	

\*Inaccuracies in the original county appraisal district property data may result in misalignment with aerial imagery.  
\*Only structures within 200 feet of the LOD were evaluated for analysis purposes. Land use is only displayed within a quarter mile of the LOD.  
**Data Sources:** County/City Boundaries - TxDOT 2013; Land Use - Respective County Appraisal Districts (2011, 2015, 2016), CLS (2017)  
**Aerial Imagery:** USDA NAIP 2014







**Dallas to Houston  
High-Speed Rail Project  
Land Use  
Segment 4  
Sheet 191 of 257**

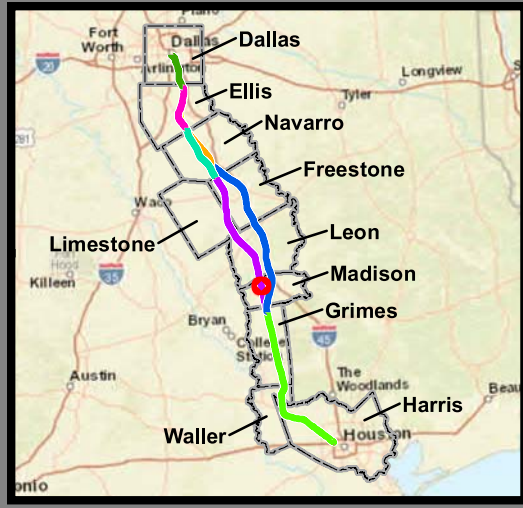
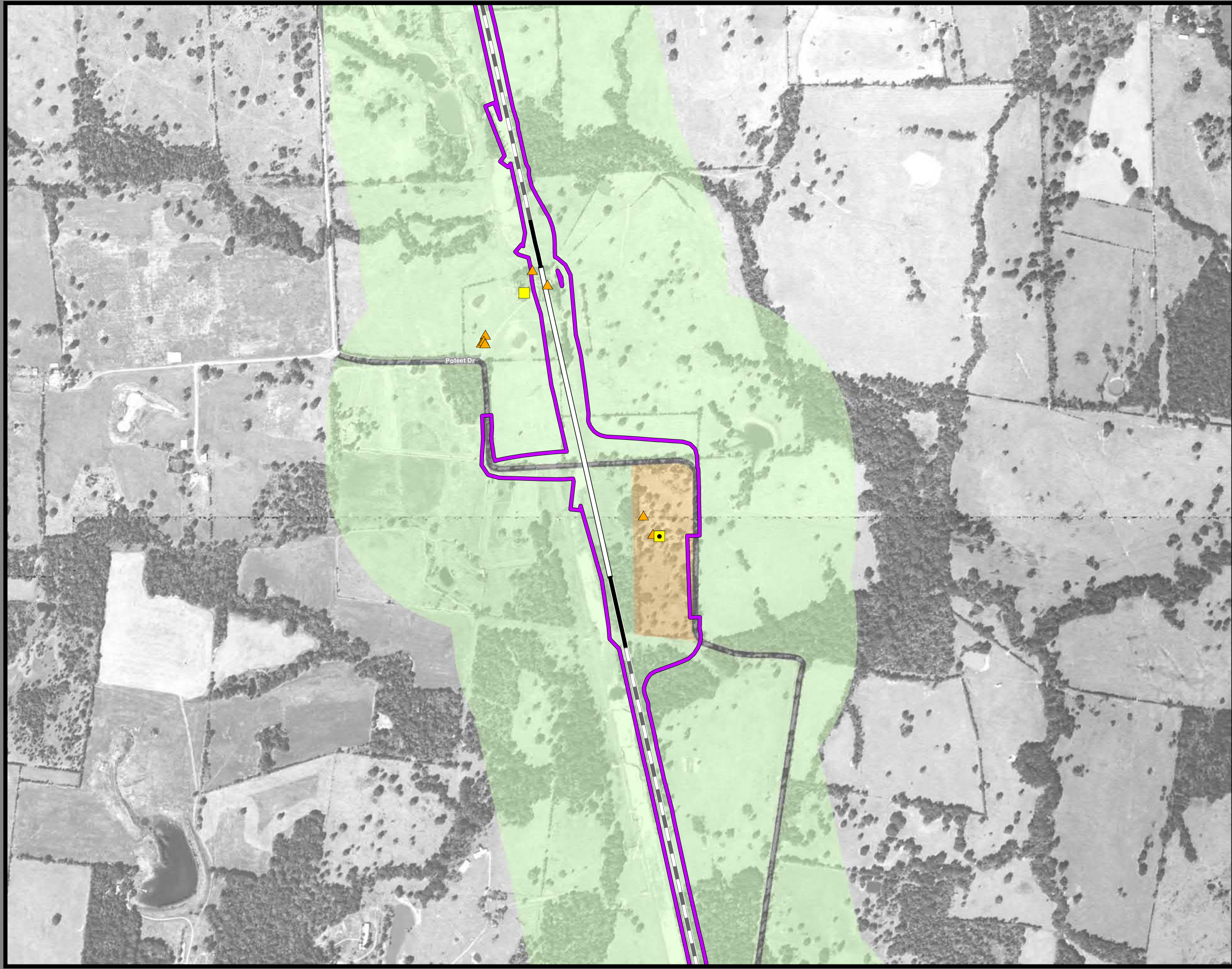
**Legend**

<p><b>Track Configuration</b></p> <ul style="list-style-type: none"> <li>— Viaduct</li> <li>— Embankment</li> <li>— Cut</li> </ul> <p><b>Limits of Disturbance</b></p> <ul style="list-style-type: none"> <li>Segment 1</li> <li>Segment 2A</li> <li>Segment 2B</li> <li>Segment 3A</li> <li>Segment 3B</li> <li>Segment 3C</li> <li>Segment 4</li> <li>Segment 5</li> </ul> <p><b>Structures</b></p> <ul style="list-style-type: none"> <li>Agriculture</li> <li>Barn / Shed</li> <li>Commercial</li> <li>Commercial within LOD</li> <li>Community Facility</li> <li>Community Facility within LOD</li> <li>Cultural Resources</li> <li>Oil / Gas</li> <li>Residential</li> <li>Residential within LOD</li> <li>Transportation</li> <li>Unknown Structure</li> <li>Utility</li> </ul>	<p><b>Jurisdictional Boundaries</b></p> <ul style="list-style-type: none"> <li>County Boundary</li> <li>City Boundary</li> <li>USACE Bardwell Lake</li> <li>Fort Boggy SP</li> </ul> <p><b>Land Use</b></p> <ul style="list-style-type: none"> <li>Agriculture</li> <li>Civic</li> <li>Commercial</li> <li>Forested Area</li> <li>Industrial</li> <li>Park</li> <li>Residential</li> <li>Rural</li> <li>Transportation</li> <li>Unclassified</li> <li>Utility</li> <li>Vacant</li> <li>Water Feature</li> </ul>
--	---

\*Inaccuracies in the original county appraisal district property data may result in misalignment with aerial imagery.  
\*Only structures within 200 feet of the LOD were evaluated for analysis purposes. Land use is only displayed within a quarter mile of the LOD.  
**Data Sources:** County/City Boundaries - TxDOT 2013; Land Use - Respective County Appraisal Districts (2011, 2015, 2016), CLS (2017)  
**Aerial Imagery:** USDA NAIP 2014







**Dallas to Houston  
High-Speed Rail Project  
Land Use  
Segment 4  
Sheet 192 of 257**

**Legend**

<b>Track Configuration</b>	<b>Jurisdictional Boundaries</b>
— Viaduct	▭ County Boundary
▬ Embankment	▭ City Boundary
▬ Cut	▭ USACE Bardwell Lake
<b>Limits of Disturbance</b>	▭ Fort Boggy SP
▭ Segment 1	<b>Land Use</b>
▭ Segment 2A	▭ Agriculture
▭ Segment 2B	▭ Civic
▭ Segment 3A	▭ Commercial
▭ Segment 3B	▭ Forested Area
▭ Segment 3C	▭ Industrial
▭ Segment 4	▭ Park
▭ Segment 5	▭ Residential
<b>Structures</b>	▭ Rural
◆ Agriculture	▭ Transportation
▲ Barn / Shed	▭ Unclassified
■ Commercial	▭ Utility
■ Commercial within LOD	▭ Vacant
◆ Community Facility	▭ Water Feature
◆ Community Facility within LOD	
✱ Cultural Resources	
● Oil / Gas	
■ Residential	
■ Residential within LOD	
⊗ Transportation	
○ Unknown Structure	
⊕ Utility	

\*Inaccuracies in the original county appraisal district property data may result in misalignment with aerial imagery.  
\*Only structures within 200 feet of the LOD were evaluated for analysis purposes. Land use is only displayed within a quarter mile of the LOD.  
**Data Sources:** County/City Boundaries - TxDOT 2013; Land Use - Respective County Appraisal Districts (2011, 2015, 2016), CLS (2017)  
**Aerial Imagery:** USDA NAIP 2014







**Dallas to Houston  
High-Speed Rail Project  
Land Use  
Segment 4  
Sheet 193 of 257**

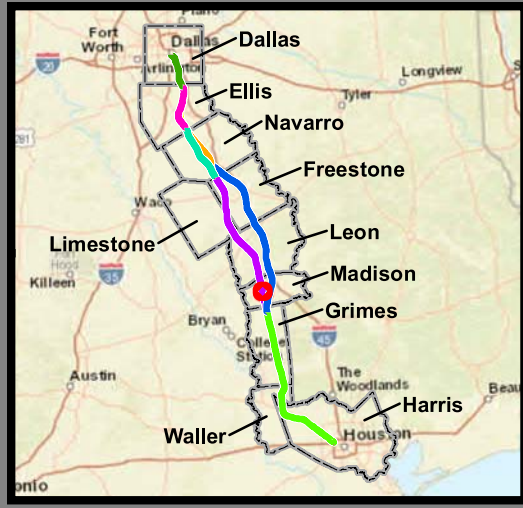
**Legend**

<b>Track Configuration</b>	<b>Jurisdictional Boundaries</b>
— Viaduct	▭ County Boundary
— Embankment	▭ City Boundary
— Cut	▭ USACE Bardwell Lake
<b>Limits of Disturbance</b>	▭ Fort Boggy SP
▭ Segment 1	<b>Land Use</b>
▭ Segment 2A	▭ Agriculture
▭ Segment 2B	▭ Civic
▭ Segment 3A	▭ Commercial
▭ Segment 3B	▭ Forested Area
▭ Segment 3C	▭ Industrial
▭ Segment 4	▭ Park
▭ Segment 5	▭ Residential
<b>Structures</b>	▭ Rural
◆ Agriculture	▭ Transportation
▲ Barn / Shed	▭ Unclassified
■ Commercial	▭ Utility
■ Commercial within LOD	▭ Vacant
◆ Community Facility	▭ Water Feature
◆ Community Facility within LOD	
✱ Cultural Resources	
● Oil / Gas	
■ Residential	
■ Residential within LOD	
⊗ Transportation	
○ Unknown Structure	
⊕ Utility	

\*Inaccuracies in the original county appraisal district property data may result in misalignment with aerial imagery.  
 \*Only structures within 200 feet of the LOD were evaluated for analysis purposes. Land use is only displayed within a quarter mile of the LOD.  
**Data Sources:** County/City Boundaries - TxDOT 2013; Land Use - Respective County Appraisal Districts (2011, 2015, 2016), CLS (2017)  
**Aerial Imagery:** USDA NAIP 2014







**Dallas to Houston  
High-Speed Rail Project  
Land Use  
Segment 4  
Sheet 194 of 257**

**Legend**

<b>Track Configuration</b>	<b>Jurisdictional Boundaries</b>
— Viaduct	▭ County Boundary
▬ Embankment	▭ City Boundary
▬ Cut	▭ USACE Bardwell Lake
<b>Limits of Disturbance</b>	▭ Fort Boggy SP
▭ Segment 1	<b>Land Use</b>
▭ Segment 2A	▭ Agriculture
▭ Segment 2B	▭ Civic
▭ Segment 3A	▭ Commercial
▭ Segment 3B	▭ Forested Area
▭ Segment 3C	▭ Industrial
▭ Segment 4	▭ Park
▭ Segment 5	▭ Residential
<b>Structures</b>	▭ Rural
◆ Agriculture	▭ Transportation
▲ Barn / Shed	▭ Unclassified
■ Commercial	▭ Utility
■ Commercial within LOD	▭ Vacant
◆ Community Facility	▭ Water Feature
◆ Community Facility within LOD	
✱ Cultural Resources	
● Oil / Gas	
■ Residential	
■ Residential within LOD	
⊗ Transportation	
○ Unknown Structure	
⊕ Utility	

\*Inaccuracies in the original county appraisal district property data may result in misalignment with aerial imagery.  
 \*Only structures within 200 feet of the LOD were evaluated for analysis purposes. Land use is only displayed within a quarter mile of the LOD.  
**Data Sources:** County/City Boundaries - TxDOT 2013; Land Use - Respective County Appraisal Districts (2011, 2015, 2016), CLS (2017)  
**Aerial Imagery:** USDA NAIP 2014







**Dallas to Houston  
High-Speed Rail Project  
Land Use  
Segment 4  
Sheet 195 of 257**

**Legend**

<b>Track Configuration</b>	<b>Jurisdictional Boundaries</b>
— Viaduct	▭ County Boundary
— Embankment	▭ City Boundary
— Cut	▭ USACE Bardwell Lake
<b>Limits of Disturbance</b>	▭ Fort Boggy SP
▭ Segment 1	<b>Land Use</b>
▭ Segment 2A	▭ Agriculture
▭ Segment 2B	▭ Civic
▭ Segment 3A	▭ Commercial
▭ Segment 3B	▭ Forested Area
▭ Segment 3C	▭ Industrial
▭ Segment 4	▭ Park
▭ Segment 5	▭ Residential
<b>Structures</b>	▭ Rural
◆ Agriculture	▭ Transportation
▲ Barn / Shed	▭ Unclassified
■ Commercial	▭ Utility
■ Commercial within LOD	▭ Vacant
◆ Community Facility	▭ Water Feature
◆ Community Facility within LOD	
✱ Cultural Resources	
● Oil / Gas	
■ Residential	
■ Residential within LOD	
⊗ Transportation	
○ Unknown Structure	
⊕ Utility	

\*Inaccuracies in the original county appraisal district property data may result in misalignment with aerial imagery.  
 \*Only structures within 200 feet of the LOD were evaluated for analysis purposes. Land use is only displayed within a quarter mile of the LOD.  
**Data Sources:** County/City Boundaries - TxDOT 2013; Land Use - Respective County Appraisal Districts (2011, 2015, 2016), CLS (2017)  
**Aerial Imagery:** USDA NAIP 2014







**Dallas to Houston  
High-Speed Rail Project  
Land Use  
Segment 4  
Sheet 196 of 257**

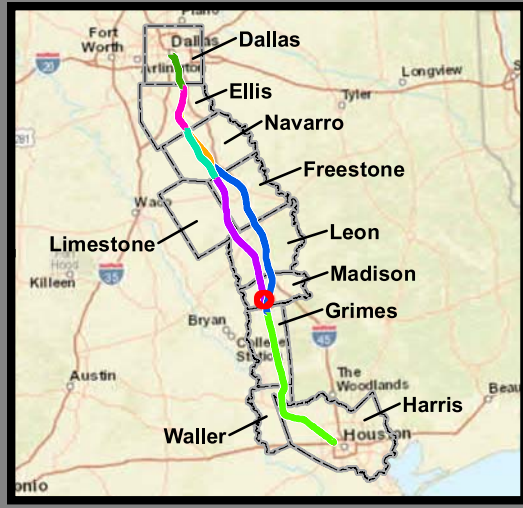
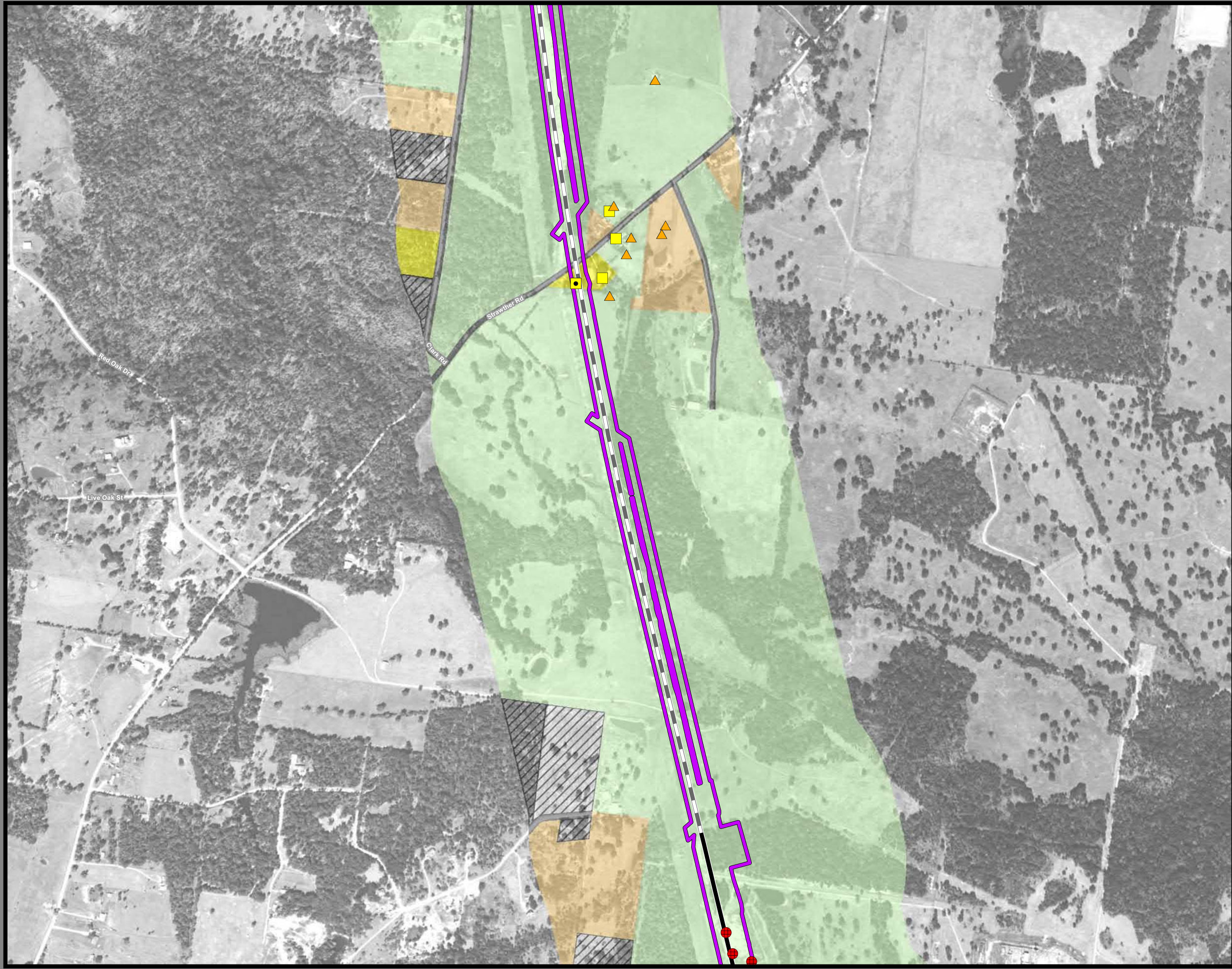
**Legend**

<p><b>Track Configuration</b></p> <ul style="list-style-type: none"> <li>— Viaduct</li> <li>— Embankment</li> <li>— Cut</li> </ul> <p><b>Limits of Disturbance</b></p> <ul style="list-style-type: none"> <li>Segment 1</li> <li>Segment 2A</li> <li>Segment 2B</li> <li>Segment 3A</li> <li>Segment 3B</li> <li>Segment 3C</li> <li>Segment 4</li> <li>Segment 5</li> </ul> <p><b>Structures</b></p> <ul style="list-style-type: none"> <li>Agriculture</li> <li>Barn / Shed</li> <li>Commercial</li> <li>Commercial within LOD</li> <li>Community Facility</li> <li>Community Facility within LOD</li> <li>Cultural Resources</li> <li>Oil / Gas</li> <li>Residential</li> <li>Residential within LOD</li> <li>Transportation</li> <li>Unknown Structure</li> <li>Utility</li> </ul>	<p><b>Jurisdictional Boundaries</b></p> <ul style="list-style-type: none"> <li>County Boundary</li> <li>City Boundary</li> <li>USACE Bardwell Lake</li> <li>Fort Boggy SP</li> </ul> <p><b>Land Use</b></p> <ul style="list-style-type: none"> <li>Agriculture</li> <li>Civic</li> <li>Commercial</li> <li>Forested Area</li> <li>Industrial</li> <li>Park</li> <li>Residential</li> <li>Rural</li> <li>Transportation</li> <li>Unclassified</li> <li>Utility</li> <li>Vacant</li> <li>Water Feature</li> </ul>
--	---

\*Inaccuracies in the original county appraisal district property data may result in misalignment with aerial imagery.  
\*Only structures within 200 feet of the LOD were evaluated for analysis purposes. Land use is only displayed within a quarter mile of the LOD.  
**Data Sources:** County/City Boundaries - TxDOT 2013; Land Use - Respective County Appraisal Districts (2011, 2015, 2016), CLS (2017)  
**Aerial Imagery:** USDA NAIP 2014







**Dallas to Houston  
High-Speed Rail Project  
Land Use  
Segment 4  
Sheet 197 of 257**

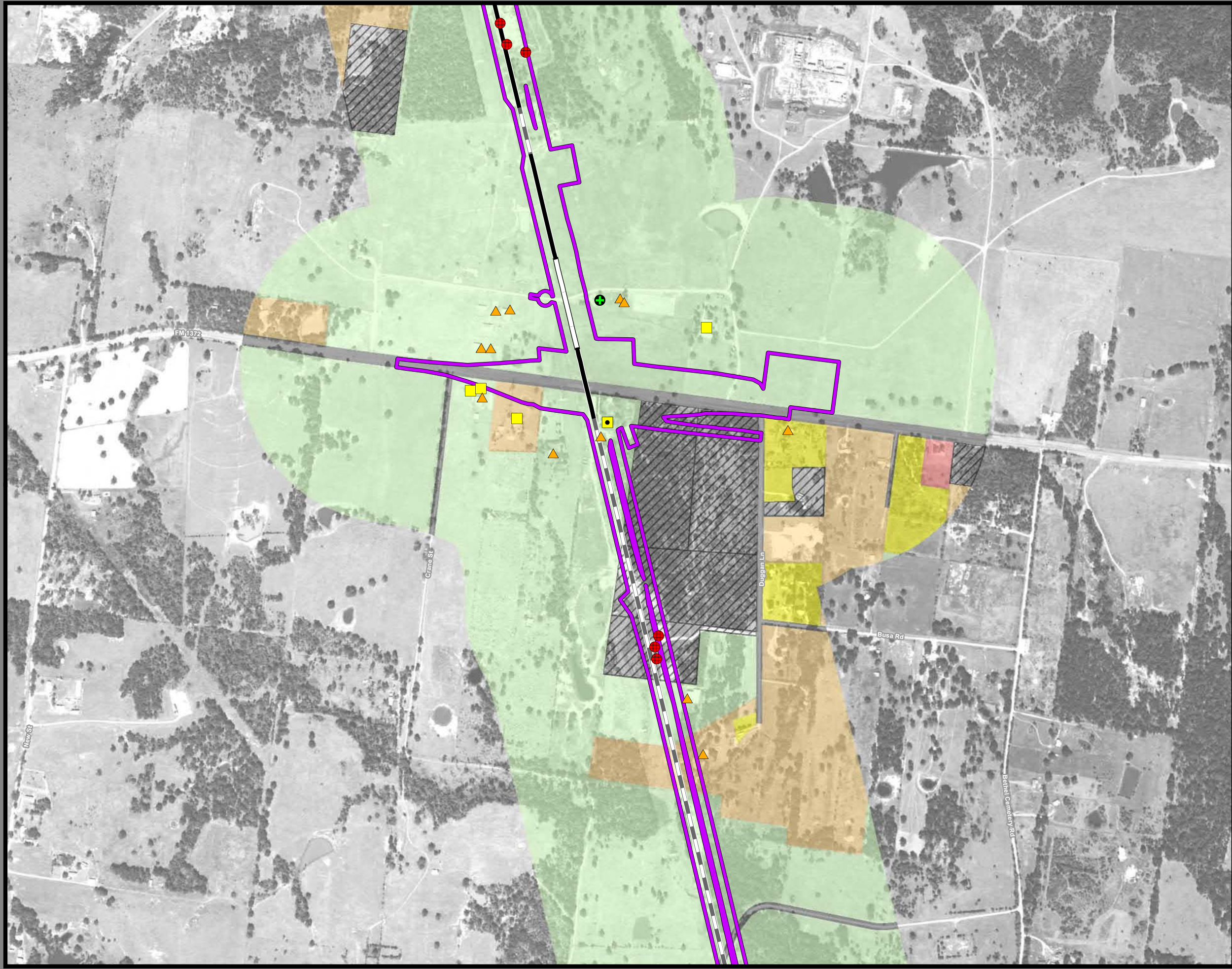
**Legend**

<b>Track Configuration</b>	<b>Jurisdictional Boundaries</b>
— Viaduct	▬ County Boundary
▬ Embankment	▬ City Boundary
▬ Cut	▬ USACE Bardwell Lake
<b>Limits of Disturbance</b>	▬ Fort Boggy SP
▬ Segment 1	<b>Land Use</b>
▬ Segment 2A	▬ Agriculture
▬ Segment 2B	▬ Civic
▬ Segment 3A	▬ Commercial
▬ Segment 3B	▬ Forested Area
▬ Segment 3C	▬ Industrial
▬ Segment 4	▬ Park
▬ Segment 5	▬ Residential
<b>Structures</b>	▬ Rural
◆ Agriculture	▬ Transportation
▲ Barn / Shed	▬ Unclassified
■ Commercial	▬ Utility
■ Commercial within LOD	▬ Vacant
◆ Community Facility	▬ Water Feature
◆ Community Facility within LOD	
✱ Cultural Resources	
● Oil / Gas	
■ Residential	
■ Residential within LOD	
⊗ Transportation	
○ Unknown Structure	
⊕ Utility	

\*Inaccuracies in the original county appraisal district property data may result in misalignment with aerial imagery.  
 \*Only structures within 200 feet of the LOD were evaluated for analysis purposes. Land use is only displayed within a quarter mile of the LOD.  
**Data Sources:** County/City Boundaries - TxDOT 2013; Land Use - Respective County Appraisal Districts (2011, 2015, 2016), CLS (2017)  
**Aerial Imagery:** USDA NAIP 2014







**Dallas to Houston  
High-Speed Rail Project  
Land Use  
Segment 4  
Sheet 198 of 257**

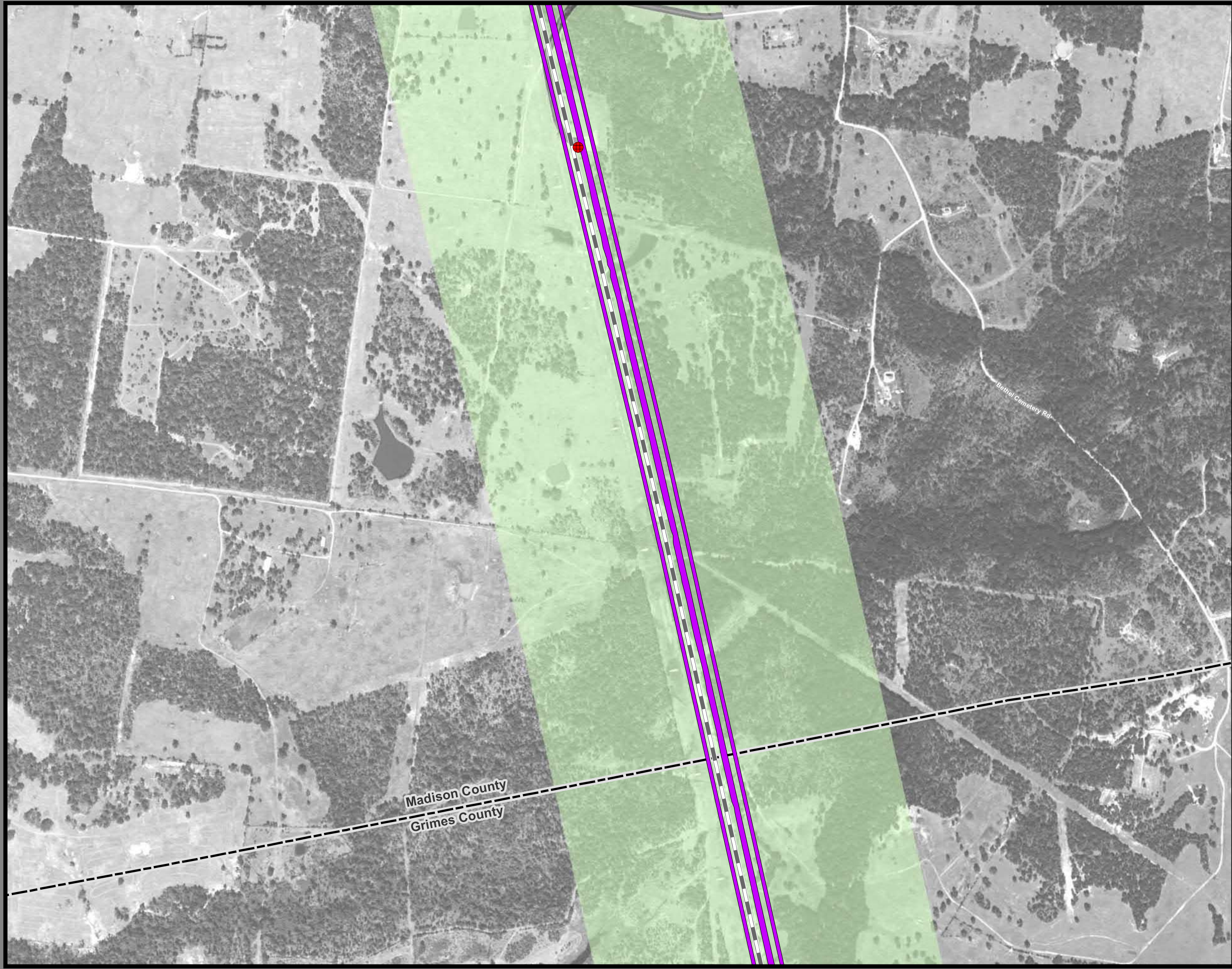
**Legend**

<p><b>Track Configuration</b></p> <ul style="list-style-type: none"> <li>— Viaduct</li> <li>— Embankment</li> <li>— Cut</li> </ul> <p><b>Limits of Disturbance</b></p> <ul style="list-style-type: none"> <li>Segment 1</li> <li>Segment 2A</li> <li>Segment 2B</li> <li>Segment 3A</li> <li>Segment 3B</li> <li>Segment 3C</li> <li>Segment 4</li> <li>Segment 5</li> </ul> <p><b>Structures</b></p> <ul style="list-style-type: none"> <li>Agriculture</li> <li>Barn / Shed</li> <li>Commercial</li> <li>Commercial within LOD</li> <li>Community Facility</li> <li>Community Facility within LOD</li> <li>Cultural Resources</li> <li>Oil / Gas</li> <li>Residential</li> <li>Residential within LOD</li> <li>Transportation</li> <li>Unknown Structure</li> <li>Utility</li> </ul>	<p><b>Jurisdictional Boundaries</b></p> <ul style="list-style-type: none"> <li>County Boundary</li> <li>City Boundary</li> <li>USACE Bardwell Lake</li> <li>Fort Boggy SP</li> </ul> <p><b>Land Use</b></p> <ul style="list-style-type: none"> <li>Agriculture</li> <li>Civic</li> <li>Commercial</li> <li>Forested Area</li> <li>Industrial</li> <li>Park</li> <li>Residential</li> <li>Rural</li> <li>Transportation</li> <li>Unclassified</li> <li>Utility</li> <li>Vacant</li> <li>Water Feature</li> </ul>
--	---

\*Inaccuracies in the original county appraisal district property data may result in misalignment with aerial imagery.  
\*Only structures within 200 feet of the LOD were evaluated for analysis purposes. Land use is only displayed within a quarter mile of the LOD.  
**Data Sources:** County/City Boundaries - TxDOT 2013; Land Use - Respective County Appraisal Districts (2011, 2015, 2016), CLS (2017)  
**Aerial Imagery:** USDA NAIP 2014







**Dallas to Houston  
High-Speed Rail Project  
Land Use  
Segment 4  
Sheet 199 of 257**

**Legend**

<p><b>Track Configuration</b></p> <ul style="list-style-type: none"> <li>— Viaduct</li> <li>— Embankment</li> <li>— Cut</li> </ul> <p><b>Limits of Disturbance</b></p> <ul style="list-style-type: none"> <li>Segment 1</li> <li>Segment 2A</li> <li>Segment 2B</li> <li>Segment 3A</li> <li>Segment 3B</li> <li>Segment 3C</li> <li>Segment 4</li> <li>Segment 5</li> </ul> <p><b>Structures</b></p> <ul style="list-style-type: none"> <li>Agriculture</li> <li>Barn / Shed</li> <li>Commercial</li> <li>Commercial within LOD</li> <li>Community Facility</li> <li>Community Facility within LOD</li> <li>Cultural Resources</li> <li>Oil / Gas</li> <li>Residential</li> <li>Residential within LOD</li> <li>Transportation</li> <li>Unknown Structure</li> <li>Utility</li> </ul>	<p><b>Jurisdictional Boundaries</b></p> <ul style="list-style-type: none"> <li>County Boundary</li> <li>City Boundary</li> <li>USACE Bardwell Lake</li> <li>Fort Boggy SP</li> </ul> <p><b>Land Use</b></p> <ul style="list-style-type: none"> <li>Agriculture</li> <li>Civic</li> <li>Commercial</li> <li>Forested Area</li> <li>Industrial</li> <li>Park</li> <li>Residential</li> <li>Rural</li> <li>Transportation</li> <li>Unclassified</li> <li>Utility</li> <li>Vacant</li> <li>Water Feature</li> </ul>
--	---

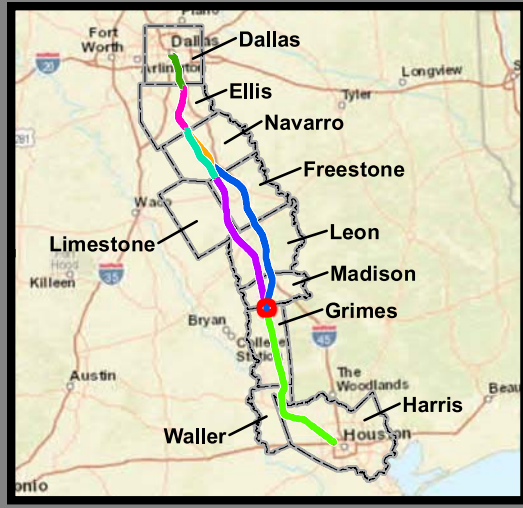
\*\*\*This Sheet only depicts Segment 4; Segment 3C is also located in this same area and can be referenced on Sheet 150.\*\*\*

\*Inaccuracies in the original county appraisal district property data may result in misalignment with aerial imagery.  
\*Only structures within 200 feet of the LOD were evaluated for analysis purposes. Land use is only displayed within a quarter mile of the LOD.

**Data Sources:** County/City Boundaries - TxDOT 2013; Land Use - Respective County Appraisal Districts (2011, 2015, 2016), CLS (2017)  
**Aerial Imagery:** USDA NAIP 2014







**Dallas to Houston  
High-Speed Rail Project  
Land Use  
Segment 4  
Sheet 200 of 257**

**Legend**

<b>Track Configuration</b>	<b>Jurisdictional Boundaries</b>
— Viaduct	▭ County Boundary
— Embankment	▭ City Boundary
— Cut	▭ USACE Bardwell Lake
<b>Limits of Disturbance</b>	▭ Fort Boggy SP
▭ Segment 1	<b>Land Use</b>
▭ Segment 2A	▭ Agriculture
▭ Segment 2B	▭ Civic
▭ Segment 3A	▭ Commercial
▭ Segment 3B	▭ Forested Area
▭ Segment 3C	▭ Industrial
▭ Segment 4	▭ Park
▭ Segment 5	▭ Residential
<b>Structures</b>	▭ Rural
◆ Agriculture	▭ Transportation
▲ Barn / Shed	▭ Unclassified
■ Commercial	▭ Utility
■ Commercial within LOD	▭ Vacant
◆ Community Facility	▭ Water Feature
◆ Community Facility within LOD	
✱ Cultural Resources	
● Oil / Gas	
■ Residential	
■ Residential within LOD	
⊗ Transportation	
○ Unknown Structure	
⊕ Utility	

\*\*\*This Sheet only depicts Segment 4; Segment 3C is also located in this same area and can be referenced on Sheet 151.\*\*\*

\*Inaccuracies in the original county appraisal district property data may result in misalignment with aerial imagery.  
\*Only structures within 200 feet of the LOD were evaluated for analysis purposes. Land use is only displayed within a quarter mile of the LOD.

**Data Sources:** County/City Boundaries - TxDOT 2013; Land Use - Respective County Appraisal Districts (2011, 2015, 2016), CLS (2017)  
**Aerial Imagery:** USDA NAIP 2014

