

**Dallas to Houston  
High-Speed Rail Project  
Project Footprint  
Segment 4  
Sheet 414 of 536**

**Legend**

<b>Track Configuration</b>	<b>Limits of Disturbance by Discipline</b>
— Viaduct	Yellow Rail
— Embankment	Grey Highway
— Cut	Pink Train Maintenance Facility
<b>Limits of Disturbance by Segment</b>	Brown Maintenance of Way Facility
Green Segment 1	Cyan Systems*
Pink Segment 2A	Orange Utilities
Yellow Segment 2B	Blue Hydro/Drainage
Cyan Segment 3A	Green Station
Orange Segment 3B	Purple Structures
Blue Segment 3C	Light Pink Temporary Construction
Purple Segment 4	
Light Green Segment 5	
<b>Limits of Disturbance by Impact Type</b>	
Red/White Diagonal Permanent	
Green/White Diagonal Temporary	
Black Railroad	
Black Property Boundary	
Grey County Boundary	

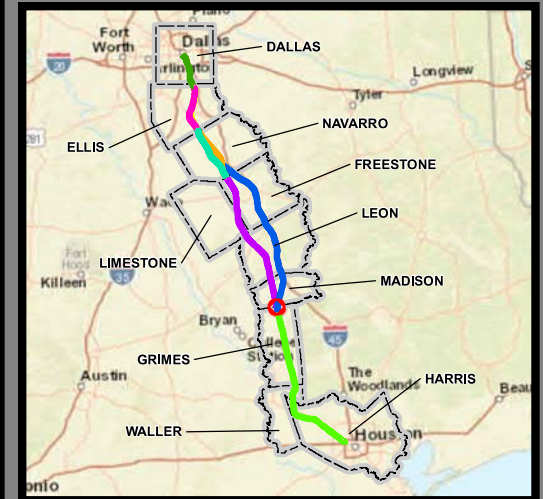
**Property ID** -This is a unique identifier that corresponds with the Property identification number.

\*Systems data includes associated systems and facilities for the HSR, such as ATP, communication systems, SP, SSP and TPSS.

**Data Sources:** Parcel Data - Contract Land Staff - April 26, 2017  
**Aerial Imagery:** USDA NAIP 2014







**Dallas to Houston  
High-Speed Rail Project  
Project Footprint  
Segment 4  
Sheet 415 of 536**

**Legend**

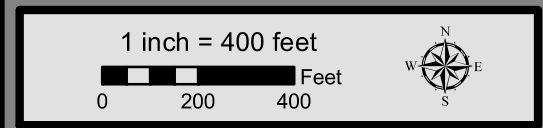
<b>Track Configuration</b>	<b>Limits of Disturbance by Discipline</b>
— Viaduct	Yellow Rail
— Embankment	Grey Highway
— Cut	Purple Train Maintenance Facility
<b>Limits of Disturbance by Segment</b>	Brown Maintenance of Way Facility
Green Segment 1	Cyan Systems*
Pink Segment 2A	Orange Utilities
Yellow Segment 2B	Blue Hydro/Drainage
Cyan Segment 3A	Green Station
Orange Segment 3B	Purple Structures
Blue Segment 3C	Pink Temporary Construction
Purple Segment 4	
Green Segment 5	
<b>Limits of Disturbance by Impact Type</b>	
Red/White Diagonal Permanent	
Green/White Diagonal Temporary	
Black Railroad	
Black Property Boundary	
Black County Boundary	

\*\*\*This Sheet only depicts Segment 4; Segment 3C is also located in this same area and can be referenced on Sheet 310.\*\*\*

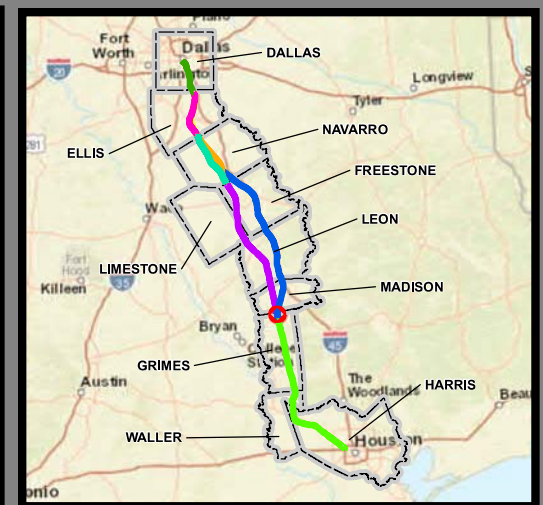
**Property ID** -This is a unique identifier that corresponds with the Property identification number.

\*Systems data includes associated systems and facilities for the HSR, such as ATP, communication systems, SP, SSP and TPSS.

**Data Sources:** Parcel Data - Contract Land Staff - April 26, 2017  
**Aerial Imagery:** USDA NAIP 2014







**Dallas to Houston  
High-Speed Rail Project  
Project Footprint  
Segment 4  
Sheet 416 of 536**

**Legend**

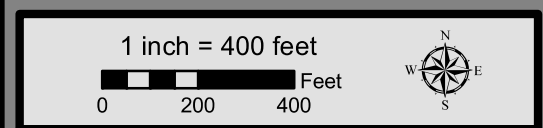
<b>Track Configuration</b>	<b>Limits of Disturbance by Discipline</b>
— Viaduct	Yellow Rail
— Embankment	Grey Highway
— Cut	Purple Train Maintenance Facility
<b>Limits of Disturbance by Segment</b>	Brown Maintenance of Way Facility
Green Segment 1	Cyan Systems*
Pink Segment 2A	Orange Utilities
Yellow Segment 2B	Blue Hydro/Drainage
Cyan Segment 3A	Green Station
Orange Segment 3B	Purple Structures
Blue Segment 3C	Pink Temporary Construction
Purple Segment 4	
Green Segment 5	
<b>Limits of Disturbance by Impact Type</b>	
Red hatched Permanent	
Green hatched Temporary	
— Railroad	
— Property Boundary	
— County Boundary	

\*\*\*This Sheet only depicts Segment 4; Segment 3C is also located in this same area and can be referenced on Sheet 311.\*\*\*

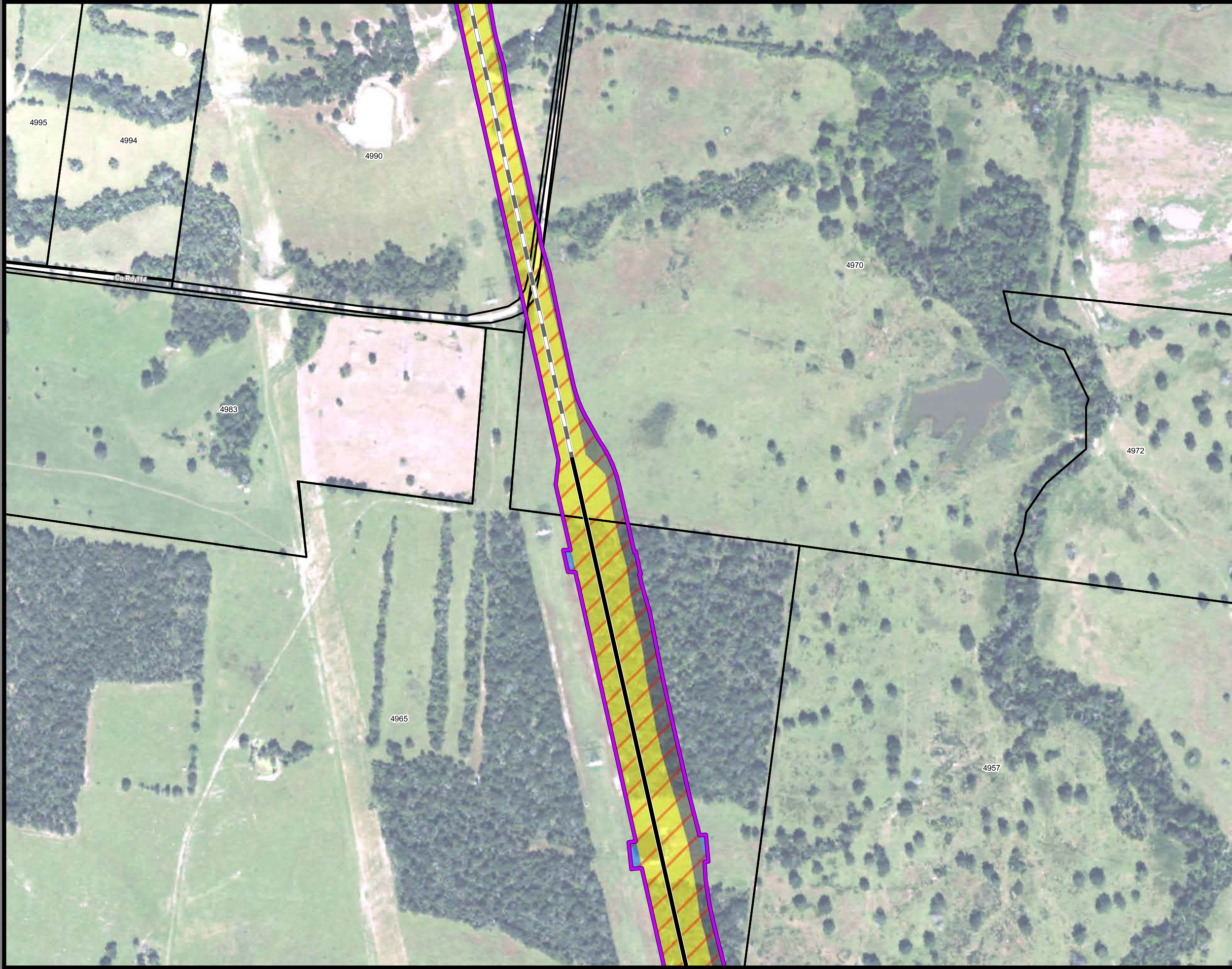
**Property ID** -This is a unique identifier that corresponds with the Property identification number.

\*Systems data includes associated systems and facilities for the HSR, such as ATP, communication systems, SP, SSP and TPSS.

**Data Sources:** Parcel Data - Contract Land Staff - April 26, 2017  
**Aerial Imagery:** USDA NAIP 2014







**Dallas to Houston  
High-Speed Rail Project  
Project Footprint  
Segment 4  
Sheet 417 of 536**

**Legend**

<b>Track Configuration</b>	<b>Limits of Disturbance by Discipline</b>
— Viaduct	Yellow Rail
— Embankment	Grey Highway
— Cut	Purple Train Maintenance Facility
<b>Limits of Disturbance by Segment</b>	Brown Maintenance of Way Facility
Green Segment 1	Cyan Systems*
Pink Segment 2A	Orange Utilities
Yellow Segment 2B	Blue Hydro/Drainage
Cyan Segment 3A	Green Station
Orange Segment 3B	Purple Structures
Blue Segment 3C	Pink Temporary Construction
Purple Segment 4	
Green Segment 5	
<b>Limits of Disturbance by Impact Type</b>	
Red/White Diagonal Permanent	
Green/White Diagonal Temporary	
— Railroad	
— Property Boundary	
— County Boundary	

\*\*\*This Sheet only depicts Segment 4; Segment 3C is also located in this same area and can be referenced on Sheet 312.\*\*\*

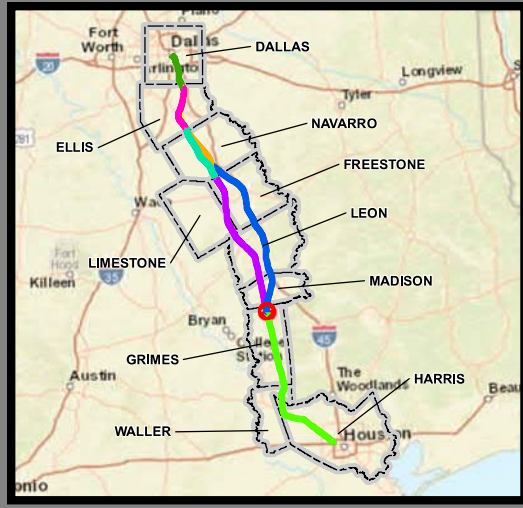
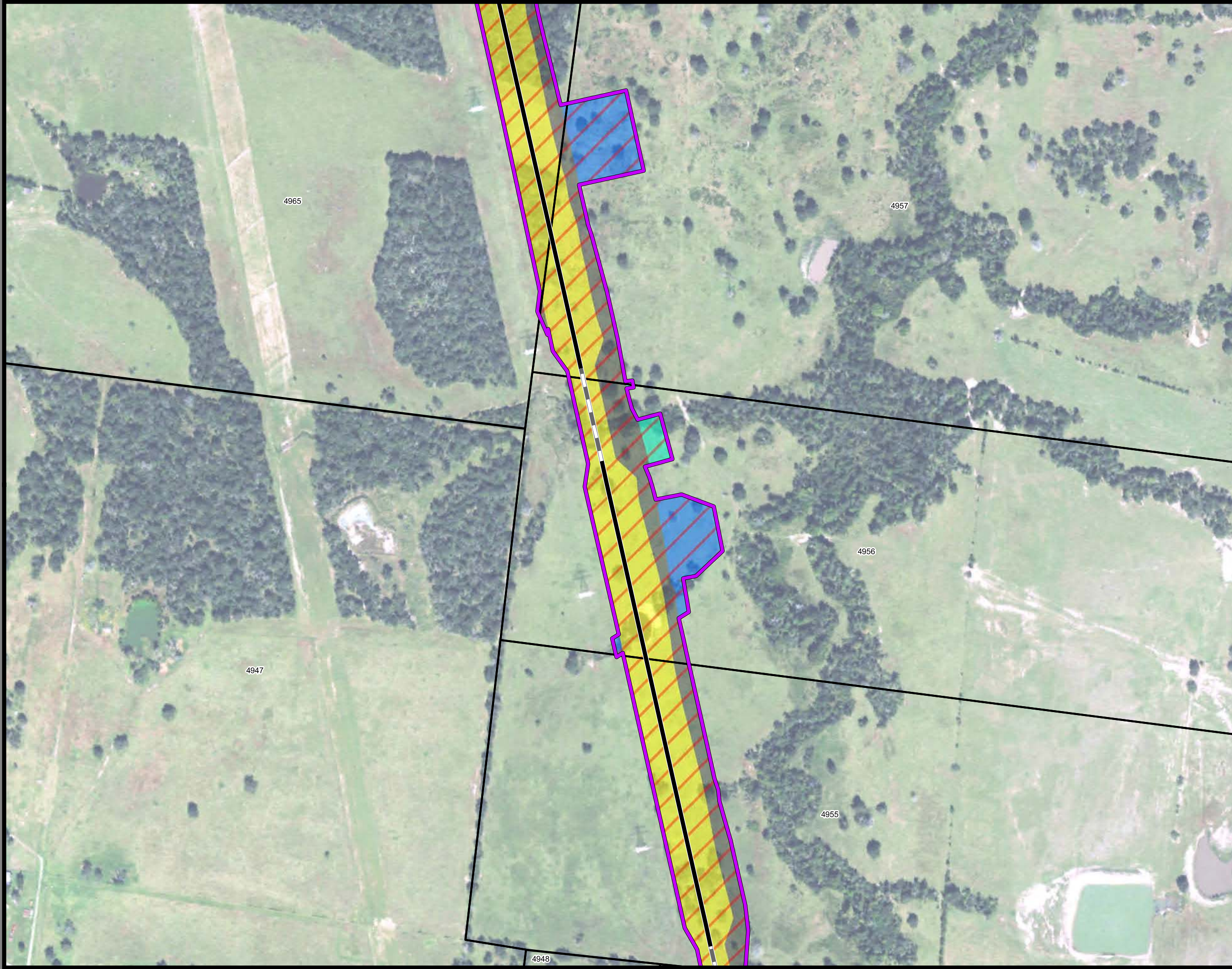
**Property ID** -This is a unique identifier that corresponds with the Property identification number.

\*Systems data includes associated systems and facilities for the HSR, such as ATP, communication systems, SP, SSP and TPSS.

**Data Sources:** Parcel Data - Contract Land Staff - April 26, 2017  
**Aerial Imagery:** USDA NAIP 2014







**Dallas to Houston  
High-Speed Rail Project  
Project Footprint  
Segment 4  
Sheet 418 of 536**

**Legend**

<b>Track Configuration</b>	<b>Limits of Disturbance by Discipline</b>
— Viaduct	Yellow: Rail
— Embankment	Grey: Highway
— Cut	Pink: Train Maintenance Facility
<b>Limits of Disturbance by Segment</b>	Brown: Maintenance of Way Facility
Green: Segment 1	Cyan: Systems*
Purple: Segment 2A	Orange: Utilities
Yellow: Segment 2B	Blue: Hydro/Drainage
Cyan: Segment 3A	Green: Station
Orange: Segment 3B	Pink: Structures
Blue: Segment 3C	Light Pink: Temporary Construction
Purple: Segment 4	
Green: Segment 5	
<b>Limits of Disturbance by Impact Type</b>	
Red Hatched: Permanent	
Green Hatched: Temporary	
— Railroad	
— Property Boundary	
— County Boundary	

\*\*\*This Sheet only depicts Segment 4; Segment 3C is also located in this same area and can be referenced on Sheet 313.\*\*\*

**Property ID** -This is a unique identifier that corresponds with the Property identification number.

\*Systems data includes associated systems and facilities for the HSR, such as ATP, communication systems, SP, SSP and TPSS.

**Data Sources:** Parcel Data - Contract Land Staff - April 26, 2017  
**Aerial Imagery:** USDA NAIP 2014







**Dallas to Houston  
High-Speed Rail Project**  
Project Footprint  
Segment 4, 5  
Sheet 419 of 536

**Legend**

<b>Track Configuration</b>	<b>Limits of Disturbance by Discipline</b>
— Viaduct	Yellow: Rail
— Embankment	Grey: Highway
— Cut	Pink: Train Maintenance Facility
<b>Limits of Disturbance by Segment</b>	Brown: Maintenance of Way Facility
Green: Segment 1	Cyan: Systems*
Pink: Segment 2A	Orange: Utilities
Yellow: Segment 2B	Blue: Hydro/Drainage
Cyan: Segment 3A	Green: Station
Orange: Segment 3B	Purple: Structures
Blue: Segment 3C	Light Pink: Temporary Construction
Purple: Segment 4	
Green: Segment 5	
<b>Limits of Disturbance by Impact Type</b>	
Red/White Hatched: Permanent	
Green/White Hatched: Temporary	
— Railroad	
— Property Boundary	
— County Boundary	

\*\*\*This Sheet only depicts Segments 4 & 5; Segment 3C is also located in this same area and can be referenced on Sheet 314.\*\*\*

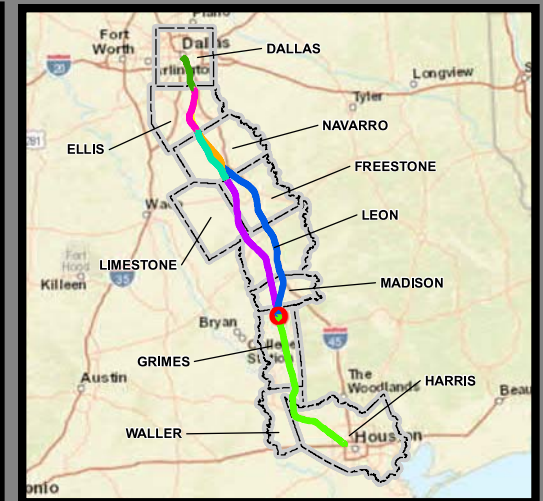
**Property ID** -This is a unique identifier that corresponds with the Property identification number.

\*Systems data includes associated systems and facilities for the HSR, such as ATP, communication systems, SP, SSP and TPSS.

**Data Sources:** Parcel Data - Contract Land Staff - April 26, 2017  
**Aerial Imagery:** USDA NAIP 2014







**Dallas to Houston  
High-Speed Rail Project  
Project Footprint  
Segment 5  
Sheet 420 of 536**

**Legend**

<b>Track Configuration</b>	<b>Limits of Disturbance by Discipline</b>
— Viaduct	Yellow Rail
— Embankment	Grey Highway
— Cut	Purple Train Maintenance Facility
<b>Limits of Disturbance by Segment</b>	Brown Maintenance of Way Facility
Green Segment 1	Cyan Systems*
Pink Segment 2A	Orange Utilities
Yellow Segment 2B	Blue Hydro/Drainage
Cyan Segment 3A	Green Station
Orange Segment 3B	Purple Structures
Blue Segment 3C	Pink Temporary Construction
Purple Segment 4	
Green Segment 5	
<b>Limits of Disturbance by Impact Type</b>	
Red diagonal lines Permanent	
Green diagonal lines Temporary	
— Railroad	
— Property Boundary	
— County Boundary	

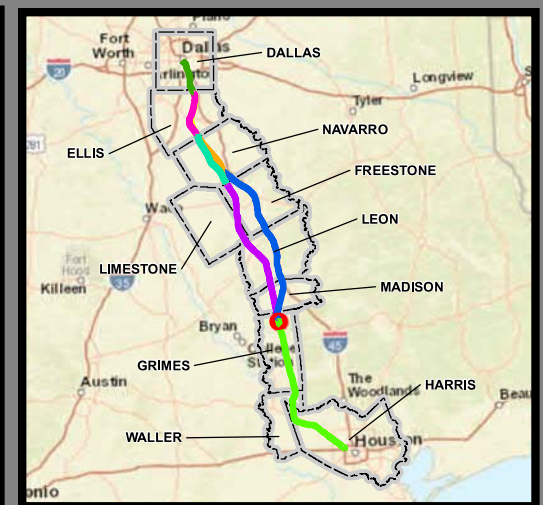
**Property ID** -This is a unique identifier that corresponds with the Property identification number.

\*Systems data includes associated systems and facilities for the HSR, such as ATP, communication systems, SP, SSP and TPSS.

**Data Sources:** Parcel Data - Contract Land Staff - April 26, 2017  
**Aerial Imagery:** USDA NAIP 2014







**Dallas to Houston  
High-Speed Rail Project  
Project Footprint  
Segment 5  
Sheet 421 of 536**

**Legend**

<b>Track Configuration</b>	<b>Limits of Disturbance by Discipline</b>
— Viaduct	Yellow: Rail
— Embankment	Grey: Highway
— Cut	Pink: Train Maintenance Facility
<b>Limits of Disturbance by Segment</b>	Brown: Maintenance of Way Facility
Green: Segment 1	Cyan: Systems*
Pink: Segment 2A	Orange: Utilities
Yellow: Segment 2B	Blue: Hydro/Drainage
Cyan: Segment 3A	Green: Station
Orange: Segment 3B	Purple: Structures
Blue: Segment 3C	Light Pink: Temporary Construction
Purple: Segment 4	
Light Green: Segment 5	
<b>Limits of Disturbance by Impact Type</b>	
Red Diagonal: Permanent	
Green Diagonal: Temporary	
— Railroad	
— Property Boundary	
— County Boundary	

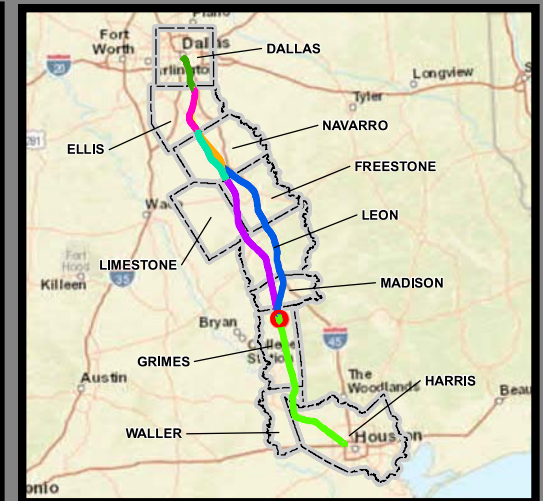
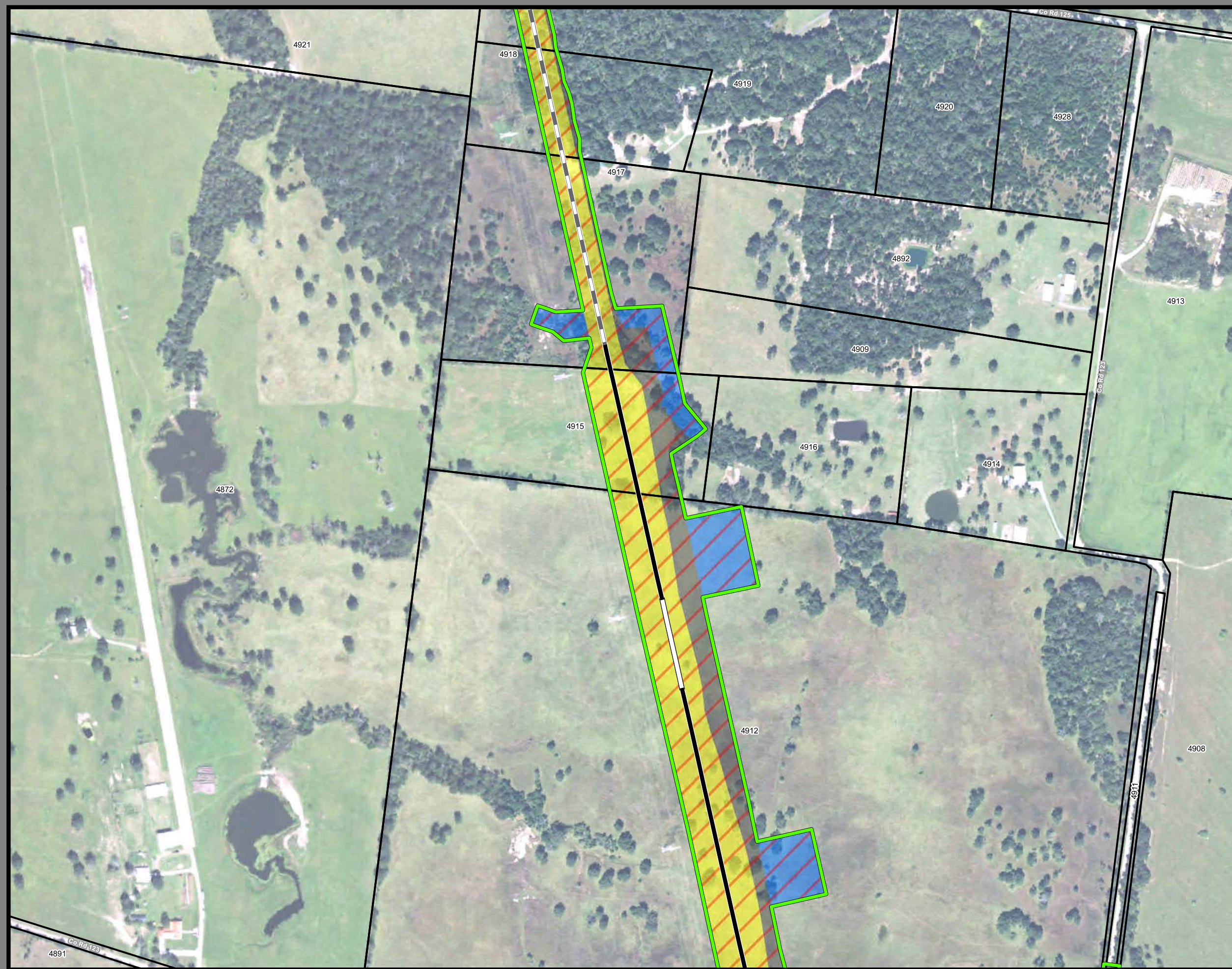
**Property ID** -This is a unique identifier that corresponds with the Property identification number.

\*Systems data includes associated systems and facilities for the HSR, such as ATP, communication systems, SP, SSP and TPSS.

**Data Sources:** Parcel Data - Contract Land Staff - April 26, 2017  
**Aerial Imagery:** USDA NAIP 2014







**Dallas to Houston  
High-Speed Rail Project  
Project Footprint  
Segment 5  
Sheet 422 of 536**

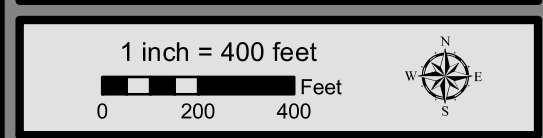
**Legend**

<b>Track Configuration</b>	<b>Limits of Disturbance by Discipline</b>
— Viaduct	Yellow Rail
— Embankment	Grey Highway
— Cut	Purple Train Maintenance Facility
<b>Limits of Disturbance by Segment</b>	Brown Maintenance of Way Facility
Green Segment 1	Cyan Systems*
Pink Segment 2A	Orange Utilities
Yellow Segment 2B	Blue Hydro/Drainage
Cyan Segment 3A	Green Station
Orange Segment 3B	Pink Structures
Blue Segment 3C	Light Pink Temporary Construction
Purple Segment 4	
Green Segment 5	
<b>Limits of Disturbance by Impact Type</b>	
Red Diagonal Hatching Permanent	
Green Diagonal Hatching Temporary	
Black Railroad	
Black Property Boundary	
Grey County Boundary	

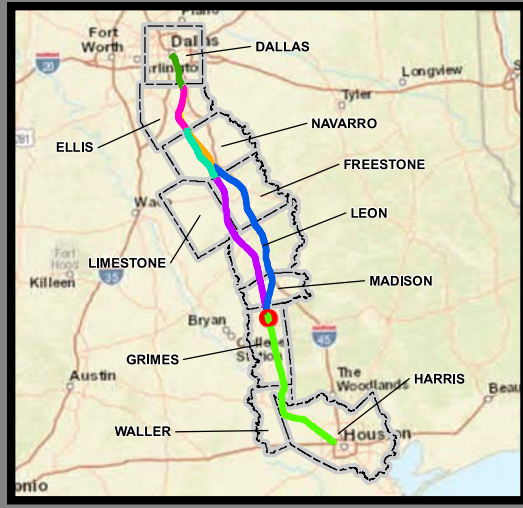
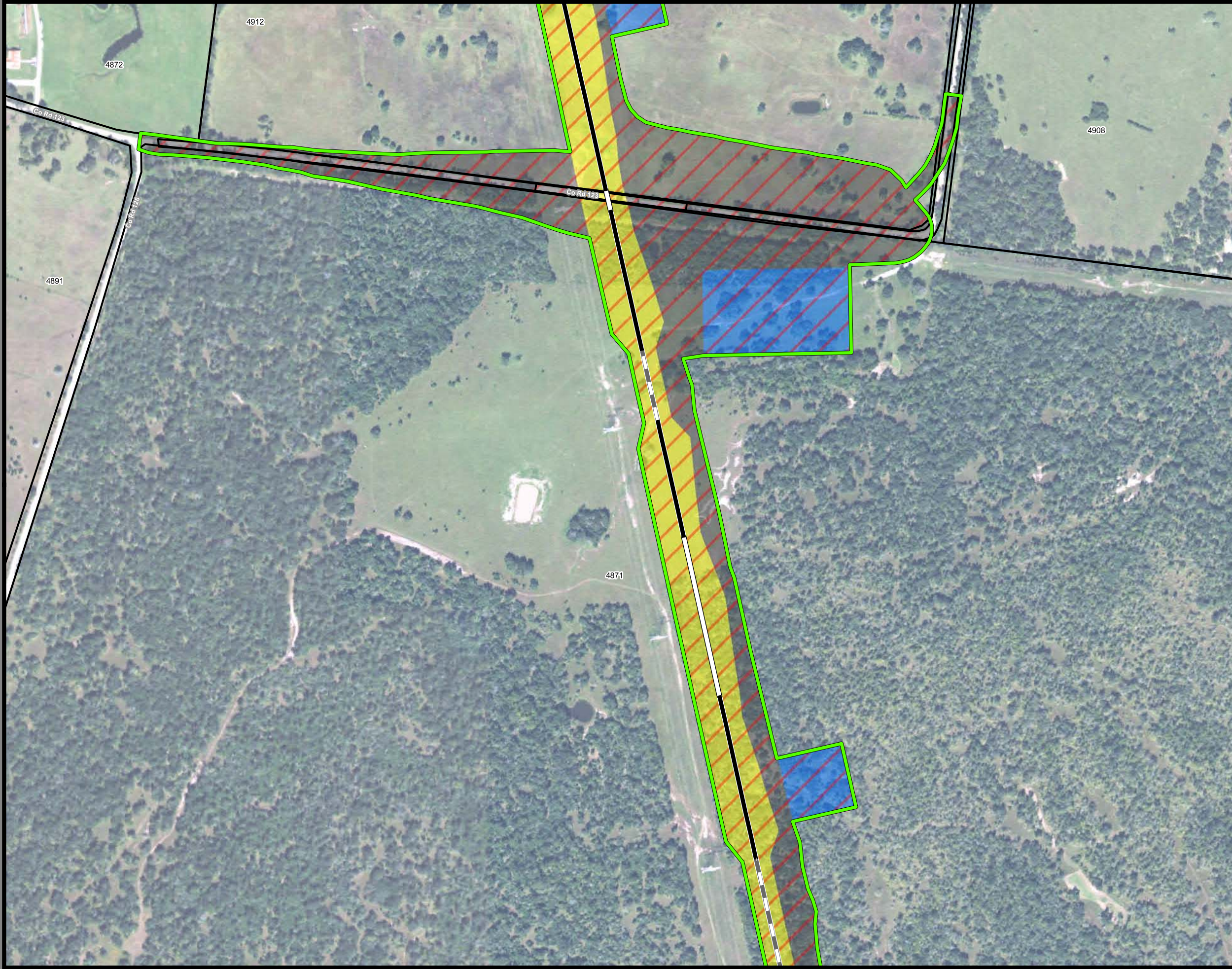
**Property ID** -This is a unique identifier that corresponds with the Property identification number.

\*Systems data includes associated systems and facilities for the HSR, such as ATP, communication systems, SP, SSP and TPSS.

**Data Sources:** Parcel Data - Contract Land Staff - April 26, 2017  
**Aerial Imagery:** USDA NAIP 2014







**Dallas to Houston  
High-Speed Rail Project  
Project Footprint  
Segment 5  
Sheet 423 of 536**

**Legend**

<b>Track Configuration</b>	<b>Limits of Disturbance by Discipline</b>
— Viaduct	Yellow Rail
— Embankment	Grey Highway
— Cut	Pink Train Maintenance Facility
<b>Limits of Disturbance by Segment</b>	Brown Maintenance of Way Facility
Green Segment 1	Cyan Systems*
Pink Segment 2A	Orange Utilities
Yellow Segment 2B	Blue Hydro/Drainage
Cyan Segment 3A	Green Station
Orange Segment 3B	Purple Structures
Blue Segment 3C	Pink Temporary Construction
Purple Segment 4	
Green Segment 5	
<b>Limits of Disturbance by Impact Type</b>	
Red diagonal hatching Permanent	
Green diagonal hatching Temporary	
— Railroad	
— Property Boundary	
— County Boundary	

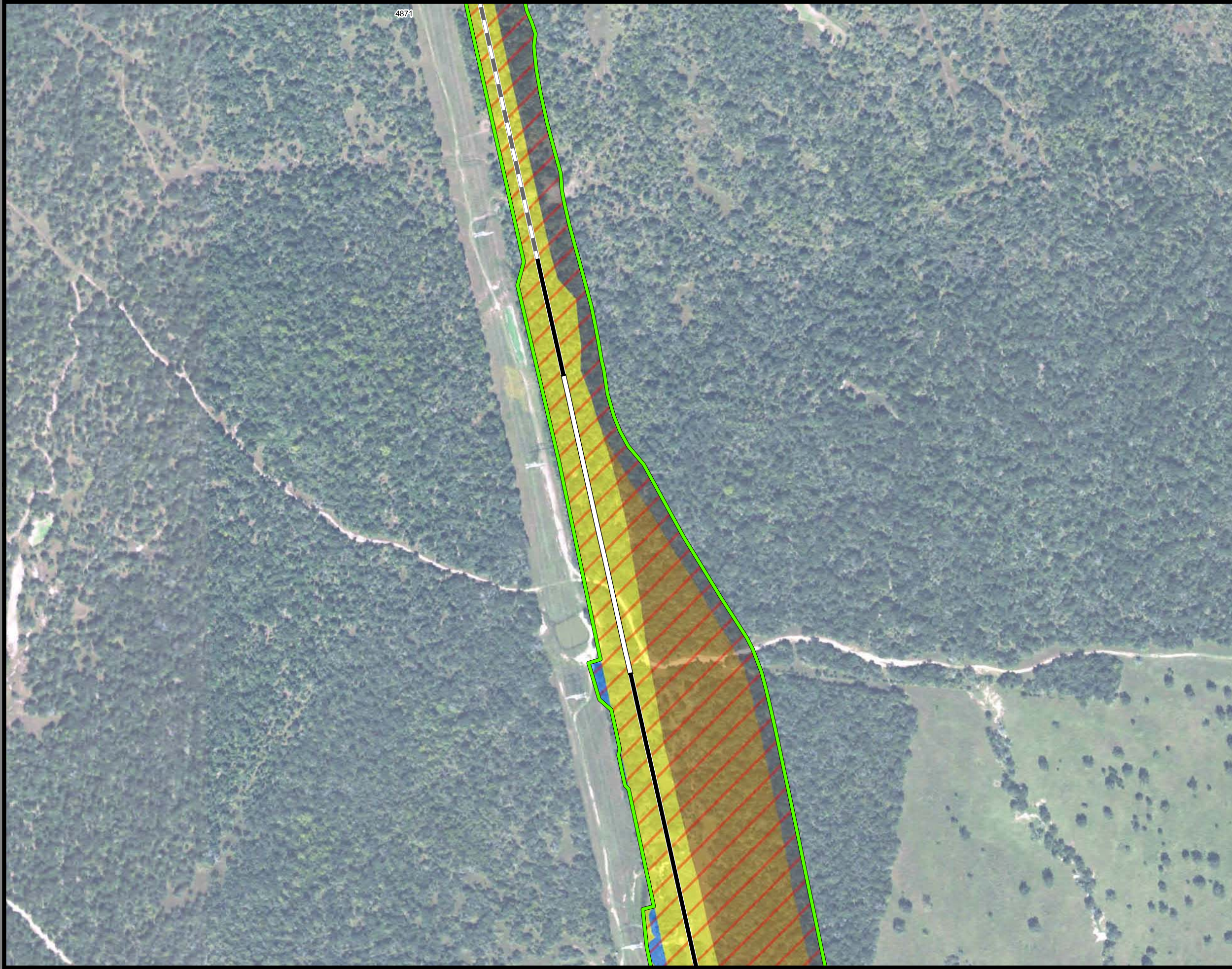
**Property ID** -This is a unique identifier that corresponds with the Property identification number.

\*Systems data includes associated systems and facilities for the HSR, such as ATP, communication systems, SP, SSP and TPSS.

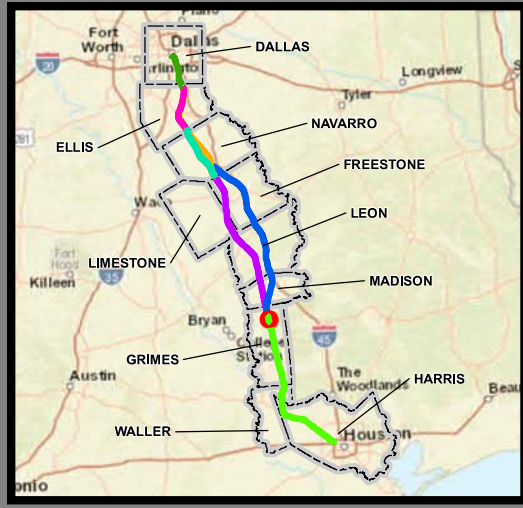
**Data Sources:** Parcel Data - Contract Land Staff - April 26, 2017  
**Aerial Imagery:** USDA NAIP 2014







4871



**Dallas to Houston  
High-Speed Rail Project  
Project Footprint  
Segment 5  
Sheet 424 of 536**

**Legend**

<b>Track Configuration</b>	<b>Limits of Disturbance by Discipline</b>
— Viaduct	Yellow Rail
— Embankment	Grey Highway
— Cut	Pink Train Maintenance Facility
<b>Limits of Disturbance by Segment</b>	Brown Maintenance of Way Facility
Green Segment 1	Cyan Systems*
Pink Segment 2A	Orange Utilities
Yellow Segment 2B	Blue Hydro/Drainage
Cyan Segment 3A	Green Station
Orange Segment 3B	Purple Structures
Blue Segment 3C	Light Pink Temporary Construction
Purple Segment 4	
Light Green Segment 5	
<b>Limits of Disturbance by Impact Type</b>	
Red Diagonal Hatching Permanent	
Green Diagonal Hatching Temporary	
— Railroad	
— Property Boundary	
— County Boundary	

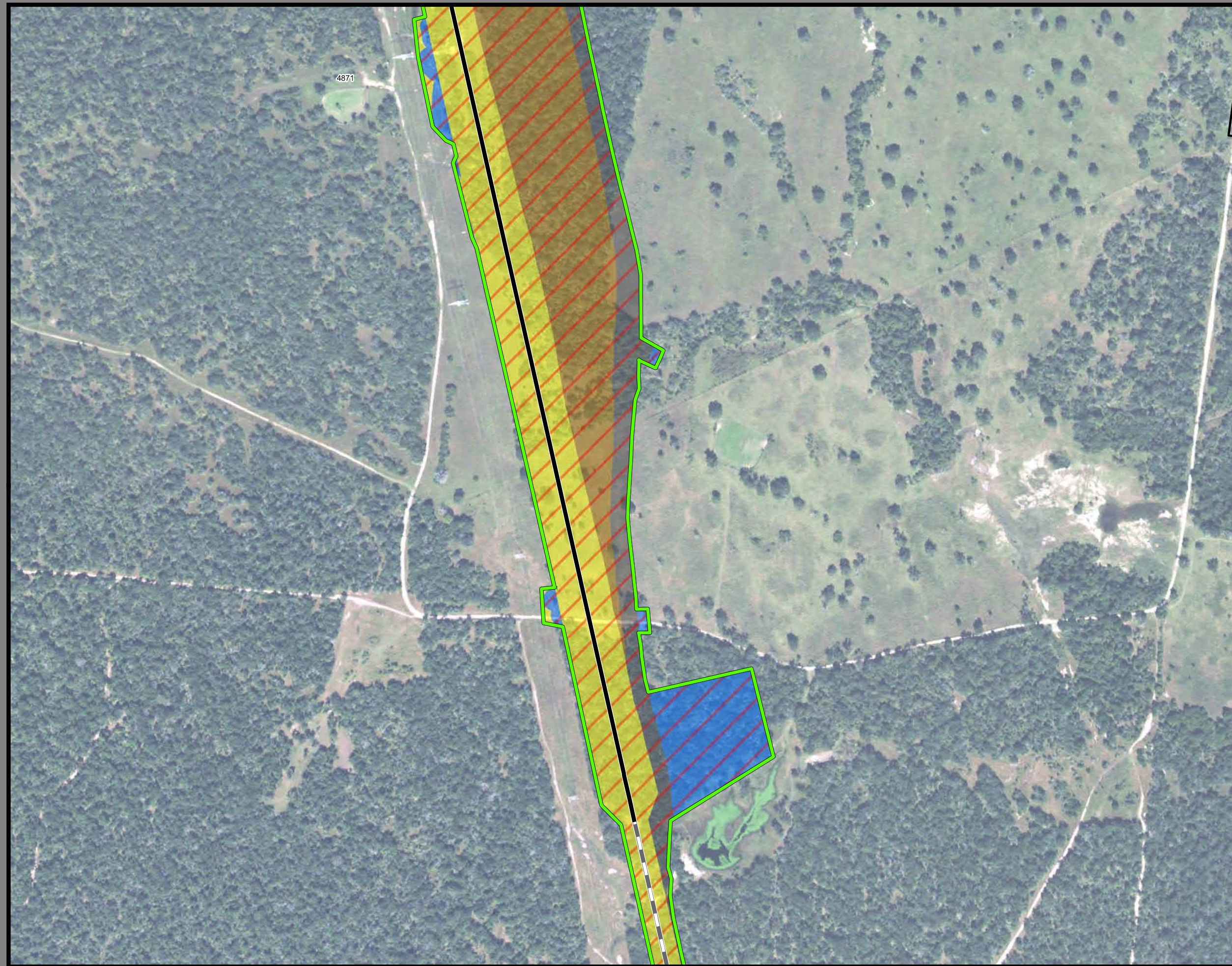
**Property ID** -This is a unique identifier that corresponds with the Property identification number.

\*Systems data includes associated systems and facilities for the HSR, such as ATP, communication systems, SP, SSP and TPSS.

**Data Sources:** Parcel Data - Contract Land Staff - April 26, 2017  
**Aerial Imagery:** USDA NAIP 2014







**Dallas to Houston  
High-Speed Rail Project**  
Project Footprint  
Segment 5  
Sheet 425 of 536

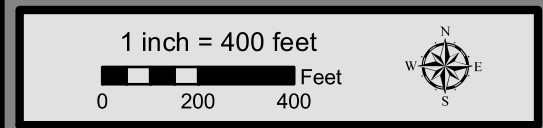
**Legend**

<b>Track Configuration</b>	<b>Limits of Disturbance by Discipline</b>
— Viaduct	Yellow Rail
— Embankment	Grey Highway
— Cut	Pink Train Maintenance Facility
<b>Limits of Disturbance by Segment</b>	Brown Maintenance of Way Facility
Green Segment 1	Cyan Systems*
Pink Segment 2A	Orange Utilities
Yellow Segment 2B	Blue Hydro/Drainage
Cyan Segment 3A	Green Station
Orange Segment 3B	Purple Structures
Blue Segment 3C	Pink Temporary Construction
Purple Segment 4	
Green Segment 5	
<b>Limits of Disturbance by Impact Type</b>	
Red diagonal hatching Permanent	
Green diagonal hatching Temporary	
Black Railroad	
Black Property Boundary	
Grey County Boundary	

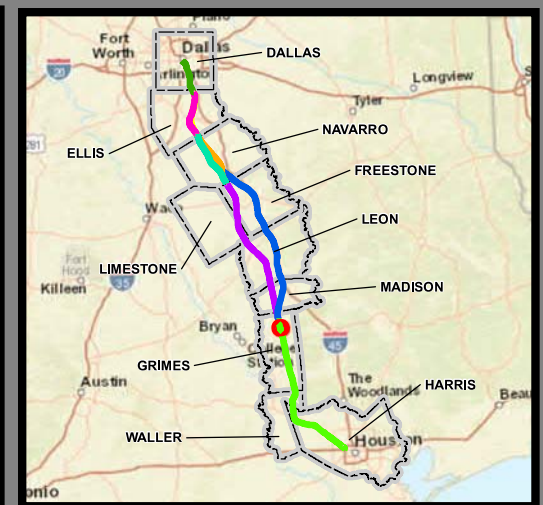
**Property ID** -This is a unique identifier that corresponds with the Property identification number.

\*Systems data includes associated systems and facilities for the HSR, such as ATP, communication systems, SP, SSP and TPSS.

**Data Sources:** Parcel Data - Contract Land Staff - April 26, 2017  
**Aerial Imagery:** USDA NAIP 2014







**Dallas to Houston**  
**High-Speed Rail Project**  
*Project Footprint*  
 Segment 5  
**Sheet 426 of 536**

**Legend**

<p><b>Track Configuration</b></p> <ul style="list-style-type: none"> <li> Viaduct</li> <li> Embankment</li> <li> Cut</li> </ul> <p><b>Limits of Disturbance by Segment</b></p> <ul style="list-style-type: none"> <li> Segment 1</li> <li> Segment 2A</li> <li> Segment 2B</li> <li> Segment 3A</li> <li> Segment 3B</li> <li> Segment 3C</li> <li> Segment 4</li> <li> Segment 5</li> </ul> <p><b>Limits of Disturbance by Impact Type</b></p> <ul style="list-style-type: none"> <li> Permanent</li> <li> Temporary</li> <li> Railroad</li> <li> Property Boundary</li> <li> County Boundary</li> </ul>	<p><b>Limits of Disturbance by Discipline</b></p> <ul style="list-style-type: none"> <li> Rail</li> <li> Highway</li> <li> Train Maintenance Facility</li> <li> Maintenance of Way Facility</li> <li> Systems*</li> <li> Utilities</li> <li> Hydro/Drainage</li> <li> Station</li> <li> Structures</li> <li> Temporary Construction</li> </ul>
---	--

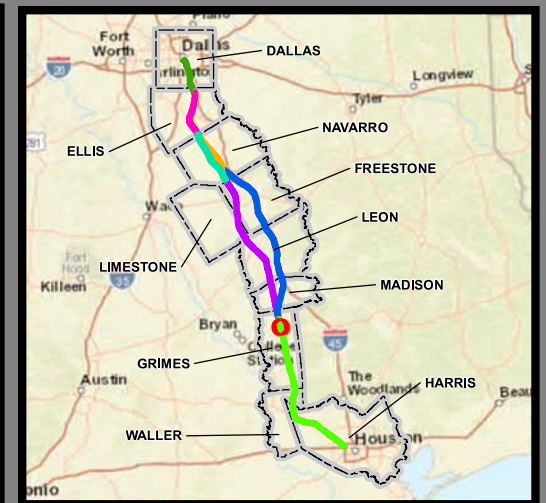
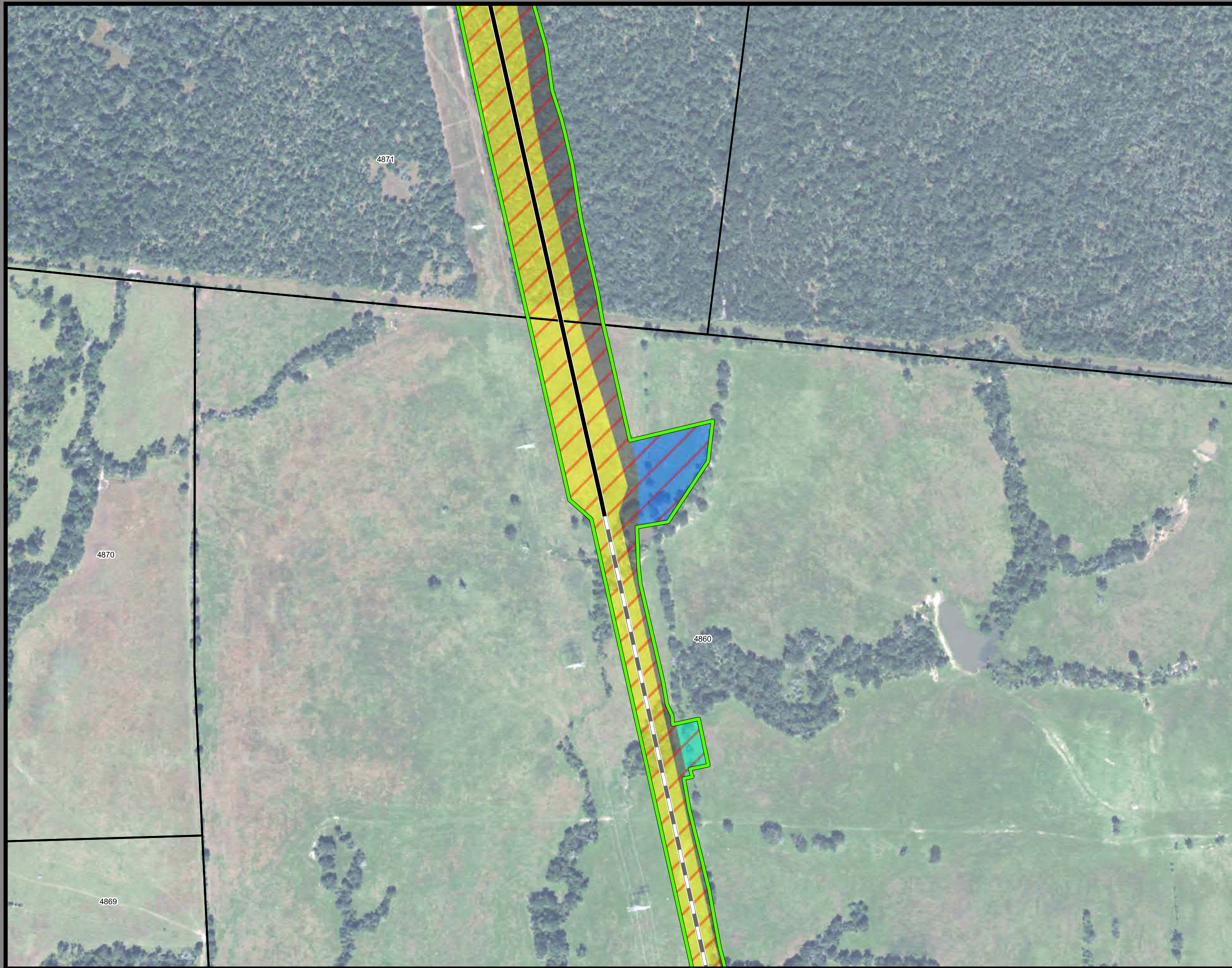
**Property ID** -This is a unique identifier that corresponds with the Property identification number.

\*Systems data includes associated systems and facilities for the HSR, such as ATP, communication systems, SP, SSP and TPSS.

**Data Sources:** Parcel Data - Contract Land Staff - April 26, 2017  
**Aerial Imagery:** USDA NAIP 2014







**Dallas to Houston**  
**High-Speed Rail Project**  
*Project Footprint*  
 Segment 5  
**Sheet 427 of 536**

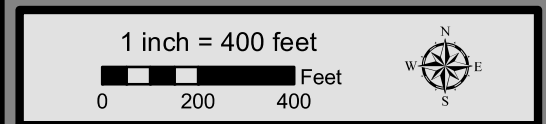
**Legend**

<p><b>Track Configuration</b></p> <ul style="list-style-type: none"> <li> Viaduct</li> <li> Embankment</li> <li> Cut</li> </ul> <p><b>Limits of Disturbance by Segment</b></p> <ul style="list-style-type: none"> <li> Segment 1</li> <li> Segment 2A</li> <li> Segment 2B</li> <li> Segment 3A</li> <li> Segment 3B</li> <li> Segment 3C</li> <li> Segment 4</li> <li> Segment 5</li> </ul> <p><b>Limits of Disturbance by Impact Type</b></p> <ul style="list-style-type: none"> <li> Permanent</li> <li> Temporary</li> <li> Railroad</li> <li> Property Boundary</li> <li> County Boundary</li> </ul>	<p><b>Limits of Disturbance by Discipline</b></p> <ul style="list-style-type: none"> <li> Rail</li> <li> Highway</li> <li> Train Maintenance Facility</li> <li> Maintenance of Way Facility</li> <li> Systems*</li> <li> Utilities</li> <li> Hydro/Drainage</li> <li> Station</li> <li> Structures</li> <li> Temporary Construction</li> </ul>
---	--

**Property ID** -This is a unique identifier that corresponds with the Property identification number.

\*Systems data includes associated systems and facilities for the HSR, such as ATP, communication systems, SP, SSP and TPSS.

**Data Sources:** Parcel Data - Contract Land Staff - April 26, 2017  
**Aerial Imagery:** USDA NAIP 2014







**Dallas to Houston  
High-Speed Rail Project  
Project Footprint  
Segment 5  
Sheet 428 of 536**

**Legend**

<b>Track Configuration</b>	<b>Limits of Disturbance by Discipline</b>
— Viaduct	Yellow: Rail
— Embankment	Grey: Highway
— Cut	Pink: Train Maintenance Facility
<b>Limits of Disturbance by Segment</b>	Brown: Maintenance of Way Facility
Green: Segment 1	Cyan: Systems*
Pink: Segment 2A	Orange: Utilities
Yellow: Segment 2B	Blue: Hydro/Drainage
Cyan: Segment 3A	Green: Station
Orange: Segment 3B	Purple: Structures
Blue: Segment 3C	Light Pink: Temporary Construction
Purple: Segment 4	
Green: Segment 5	
<b>Limits of Disturbance by Impact Type</b>	
Red Hatched: Permanent	
Green Hatched: Temporary	
— Railroad	
— Property Boundary	
— County Boundary	

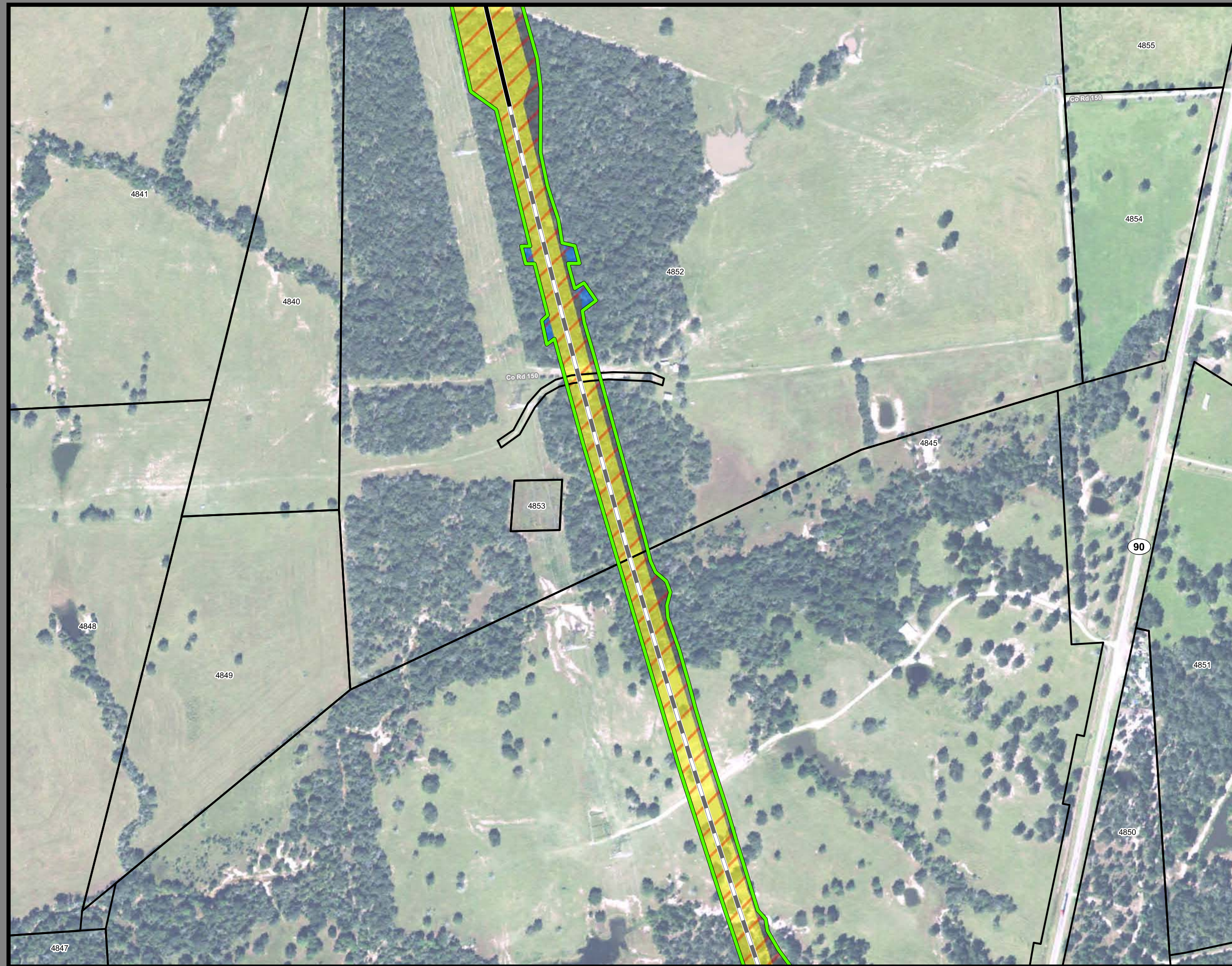
**Property ID** -This is a unique identifier that corresponds with the Property identification number.

\*Systems data includes associated systems and facilities for the HSR, such as ATP, communication systems, SP, SSP and TPSS.

**Data Sources:** Parcel Data - Contract Land Staff - April 26, 2017  
**Aerial Imagery:** USDA NAIP 2014







**Dallas to Houston  
High-Speed Rail Project**  
Project Footprint  
Segment 5  
Sheet 429 of 536

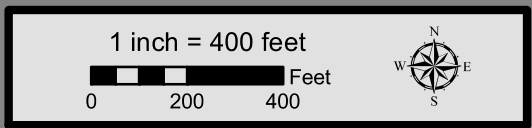
**Legend**

<b>Track Configuration</b>	<b>Limits of Disturbance by Discipline</b>
— Viaduct	Yellow: Rail
— Embankment	Grey: Highway
— Cut	Purple: Train Maintenance Facility
<b>Limits of Disturbance by Segment</b>	Brown: Maintenance of Way Facility
Green: Segment 1	Cyan: Systems*
Pink: Segment 2A	Orange: Utilities
Yellow: Segment 2B	Blue: Hydro/Drainage
Cyan: Segment 3A	Green: Station
Orange: Segment 3B	Purple: Structures
Blue: Segment 3C	Pink: Temporary Construction
Purple: Segment 4	
Green: Segment 5	
<b>Limits of Disturbance by Impact Type</b>	
Red diagonal lines: Permanent	
Green diagonal lines: Temporary	
— Railroad	
— Property Boundary	
— County Boundary	

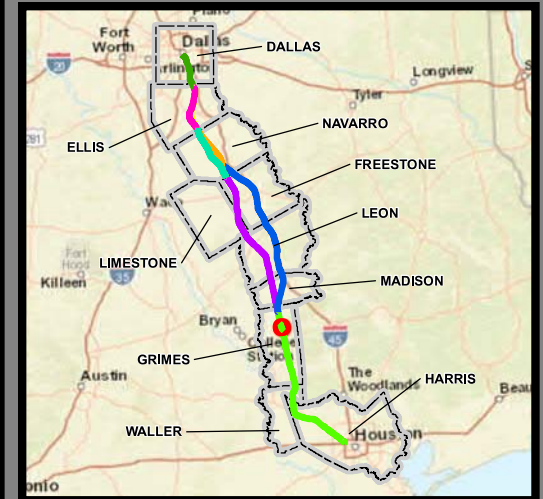
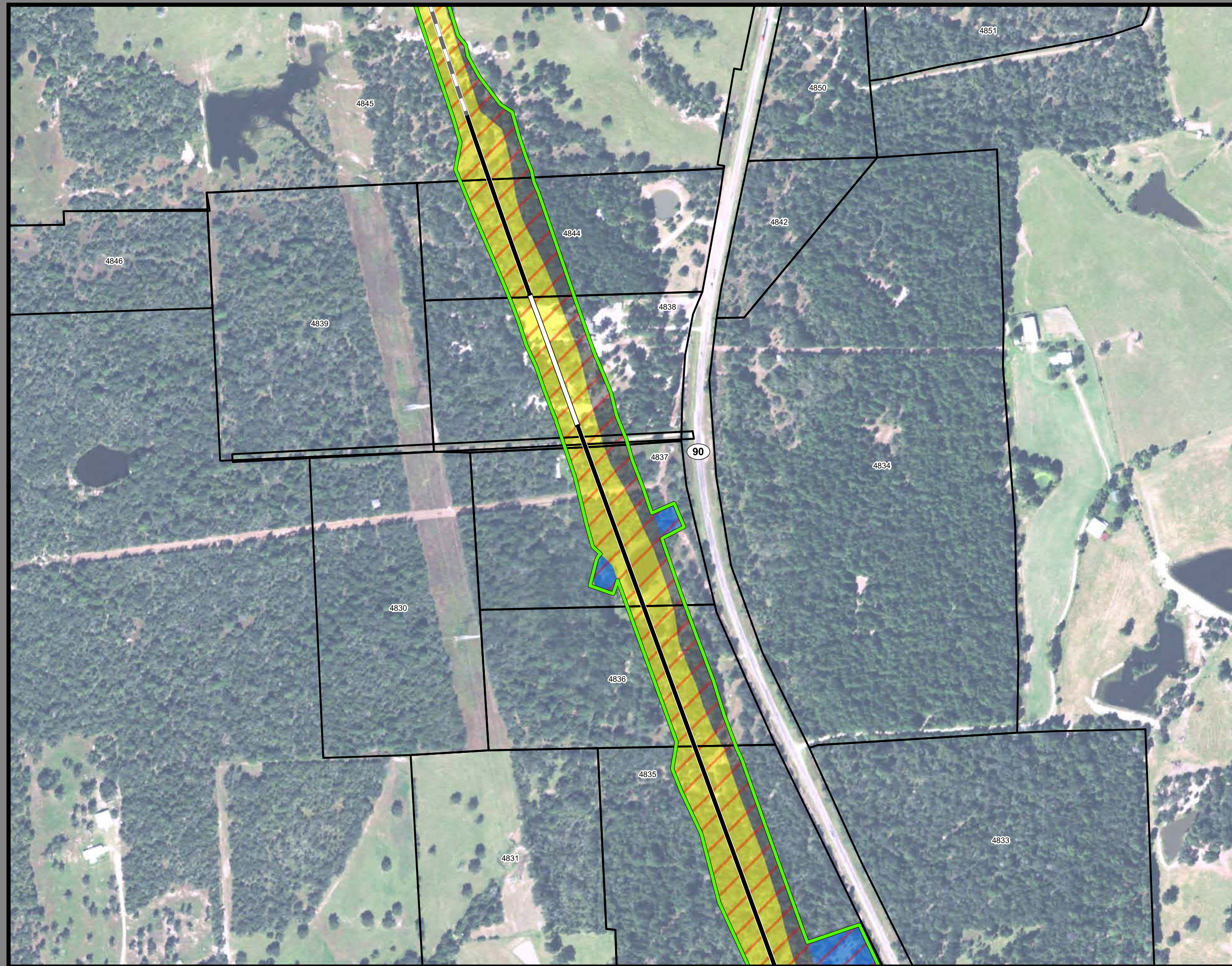
**Property ID** -This is a unique identifier that corresponds with the Property identification number.

\*Systems data includes associated systems and facilities for the HSR, such as ATP, communication systems, SP, SSP and TPSS.

**Data Sources:** Parcel Data - Contract Land Staff - April 26, 2017  
**Aerial Imagery:** USDA NAIP 2014







**Dallas to Houston  
High-Speed Rail Project  
Project Footprint  
Segment 5  
Sheet 430 of 536**

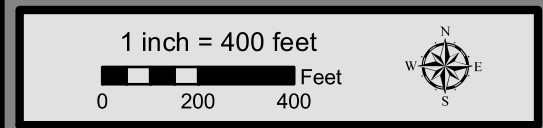
**Legend**

<b>Track Configuration</b>	<b>Limits of Disturbance by Discipline</b>
— Viaduct	Yellow Rail
— Embankment	Grey Highway
— Cut	Pink Train Maintenance Facility
<b>Limits of Disturbance by Segment</b>	Brown Maintenance of Way Facility
Green Segment 1	Cyan Systems*
Pink Segment 2A	Orange Utilities
Yellow Segment 2B	Blue Hydro/Drainage
Cyan Segment 3A	Green Station
Orange Segment 3B	Purple Structures
Blue Segment 3C	Pink Temporary Construction
Purple Segment 4	
Green Segment 5	
<b>Limits of Disturbance by Impact Type</b>	
Red diagonal lines Permanent	
Green diagonal lines Temporary	
— Railroad	
— Property Boundary	
— County Boundary	

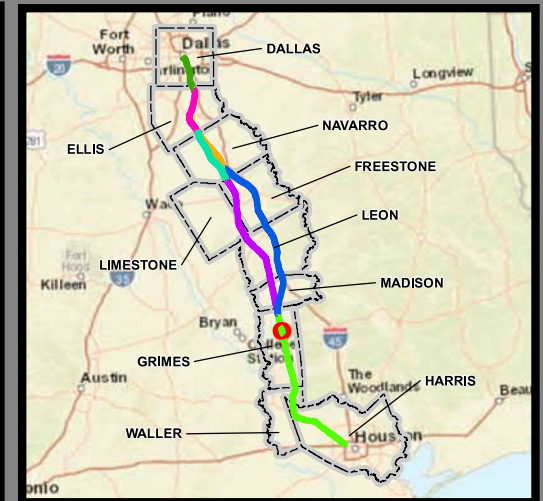
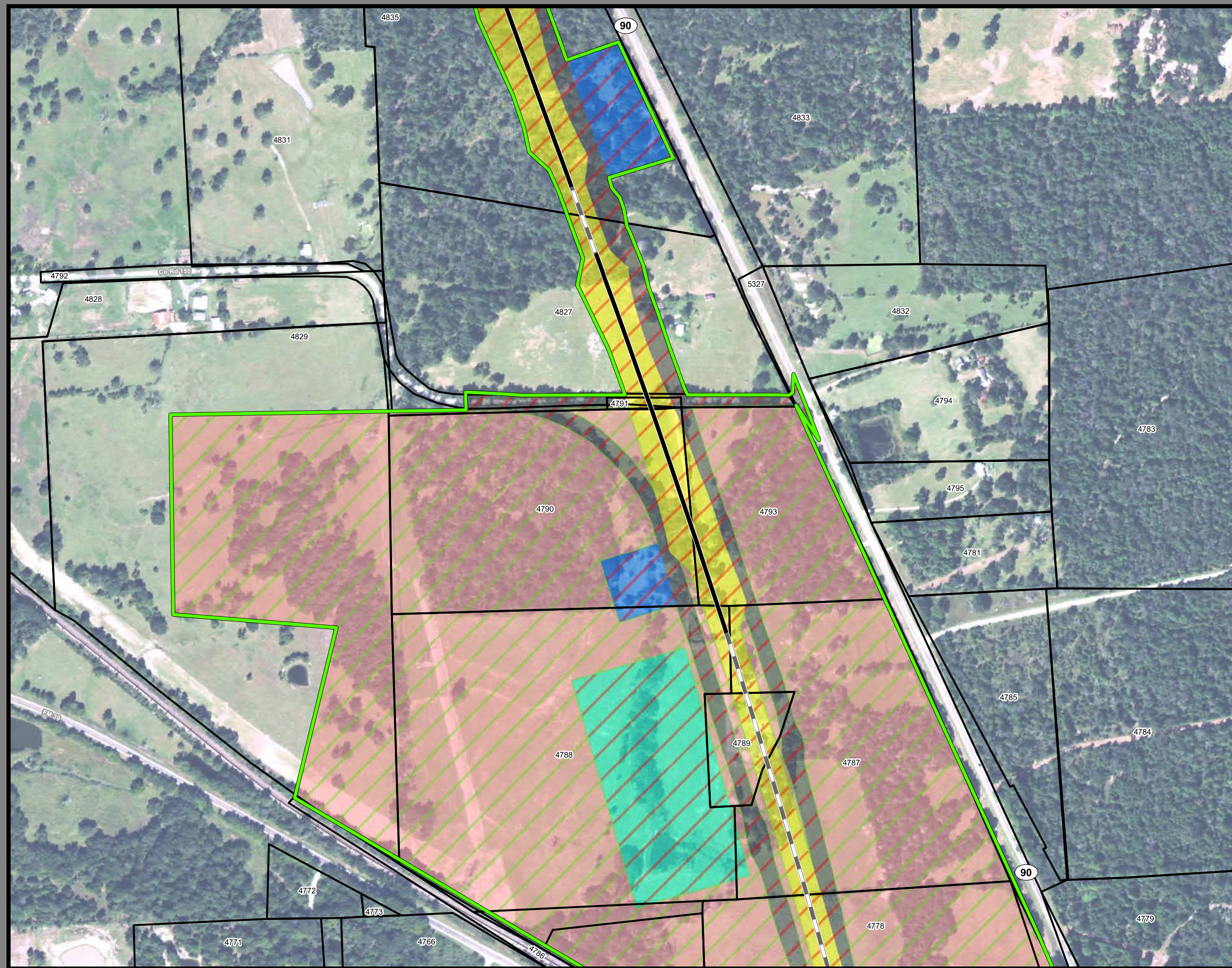
**Property ID** -This is a unique identifier that corresponds with the Property identification number.

\*Systems data includes associated systems and facilities for the HSR, such as ATP, communication systems, SP, SSP and TPSS.

**Data Sources:** Parcel Data - Contract Land Staff - April 26, 2017  
**Aerial Imagery:** USDA NAIP 2014







**Dallas to Houston  
High-Speed Rail Project  
Project Footprint  
Segment 5  
Sheet 431 of 536**

**Legend**

<b>Track Configuration</b>	<b>Limits of Disturbance by Discipline</b>
— Viaduct	Yellow: Rail
— Embankment	Grey: Highway
— Cut	Purple: Train Maintenance Facility
<b>Limits of Disturbance by Segment</b>	Brown: Maintenance of Way Facility
Green: Segment 1	Cyan: Systems*
Pink: Segment 2A	Orange: Utilities
Yellow: Segment 2B	Blue: Hydro/Drainage
Light Blue: Segment 3A	Green: Station
Orange: Segment 3B	Purple: Structures
Blue: Segment 3C	Pink: Temporary Construction
Purple: Segment 4	
Green: Segment 5	
<b>Limits of Disturbance by Impact Type</b>	
Red-hatched: Permanent	
Green-hatched: Temporary	
— Railroad	
— Property Boundary	
— County Boundary	

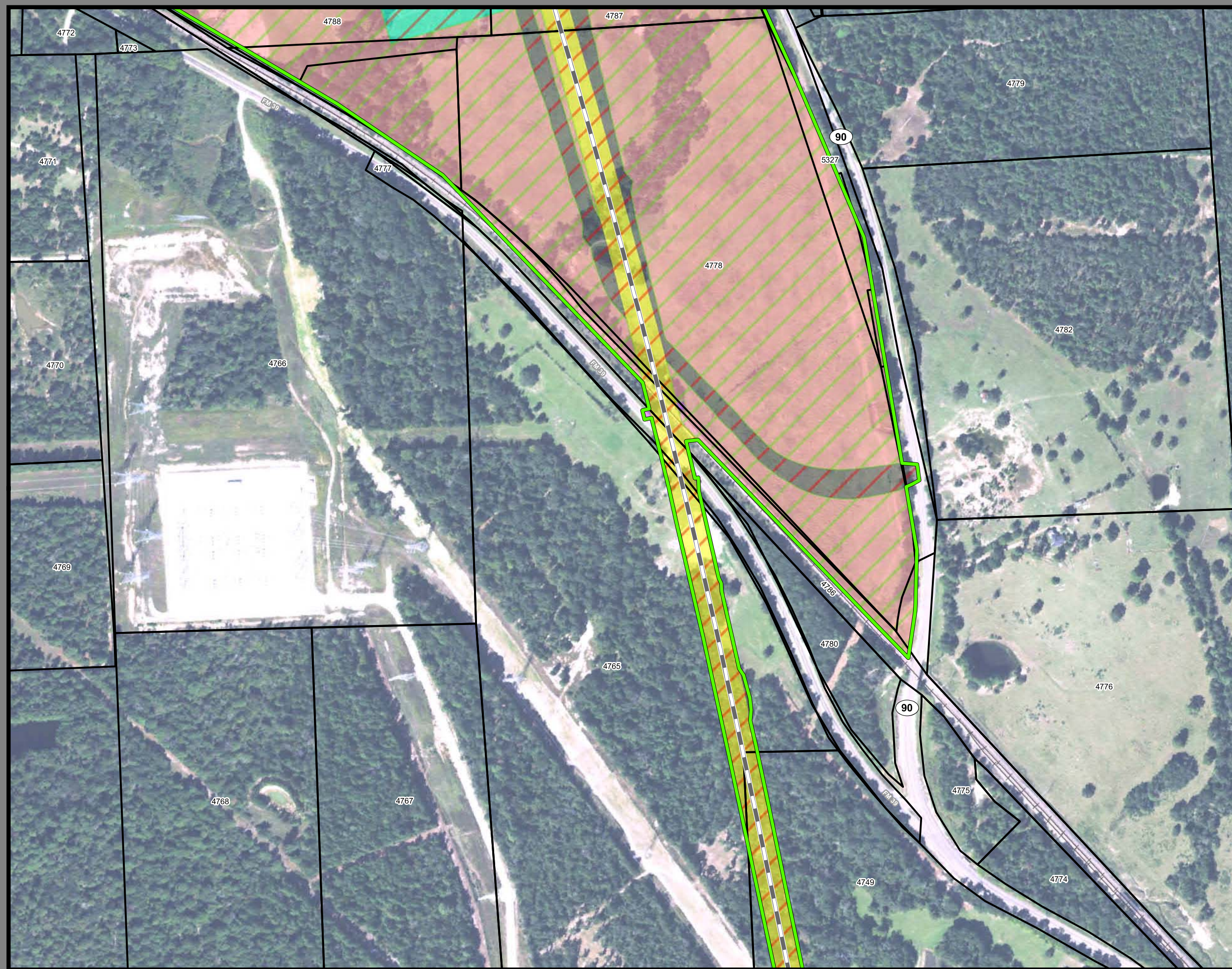
**Property ID** -This is a unique identifier that corresponds with the Property identification number.

\*Systems data includes associated systems and facilities for the HSR, such as ATP, communication systems, SP, SSP and TPSS.

**Data Sources:** Parcel Data - Contract Land Staff - April 26, 2017  
**Aerial Imagery:** USDA NAIP 2014







**Dallas to Houston  
High-Speed Rail Project  
Project Footprint  
Segment 5  
Sheet 432 of 536**

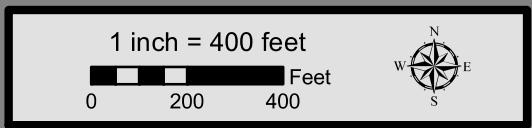
**Legend**

<b>Track Configuration</b>	<b>Limits of Disturbance by Discipline</b>
— Viaduct	Yellow Rail
— Embankment	Grey Highway
— Cut	Pink Train Maintenance Facility
<b>Limits of Disturbance by Segment</b>	Brown Maintenance of Way Facility
Green Segment 1	Cyan Systems*
Pink Segment 2A	Orange Utilities
Yellow Segment 2B	Blue Hydro/Drainage
Cyan Segment 3A	Green Station
Orange Segment 3B	Purple Structures
Blue Segment 3C	Light Purple Temporary Construction
Purple Segment 4	
Light Purple Segment 5	
<b>Limits of Disturbance by Impact Type</b>	
Red Diagonal Lines Permanent	
Green Diagonal Lines Temporary	
Black Railroad	
Black Property Boundary	
Grey County Boundary	

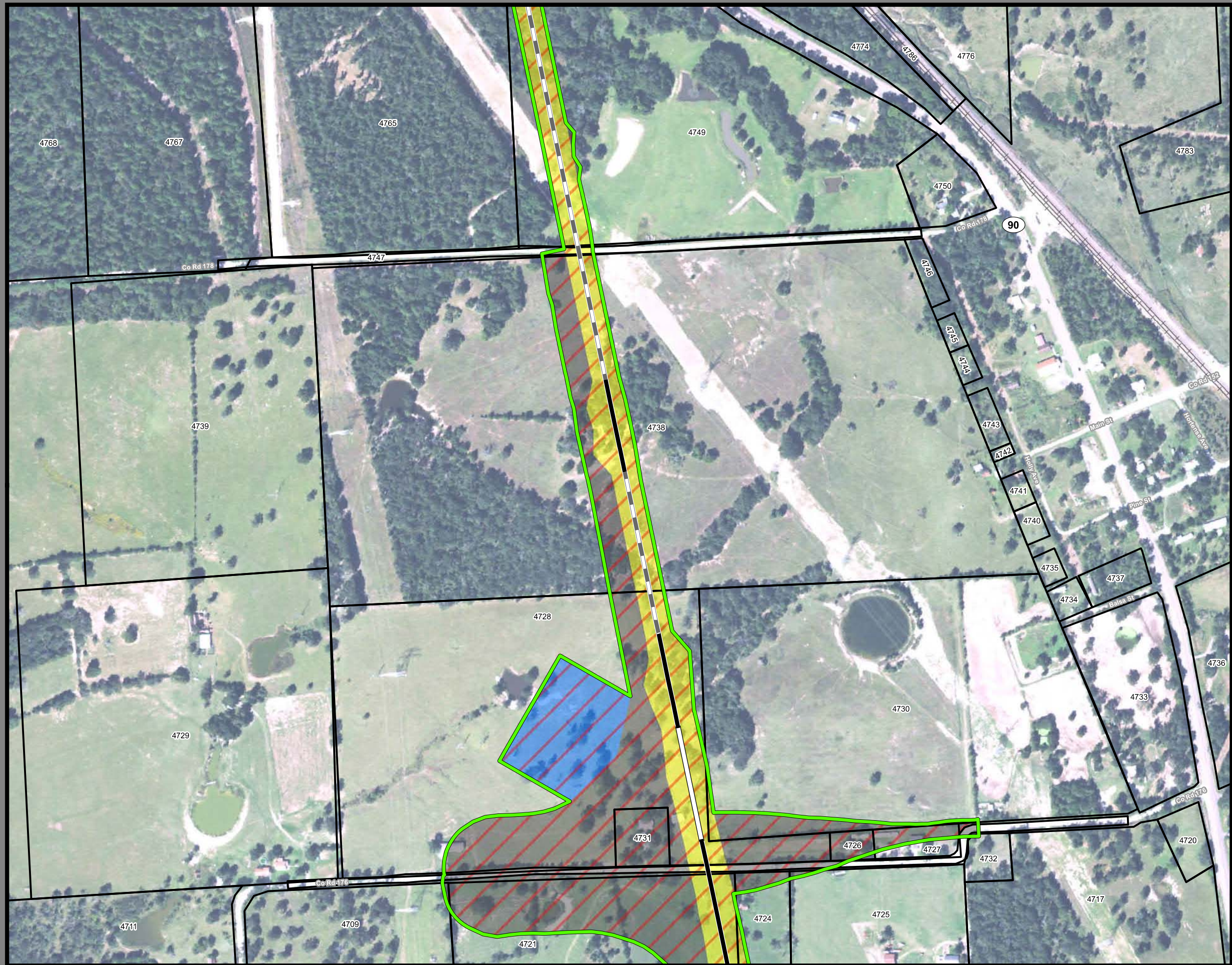
**Property ID** -This is a unique identifier that corresponds with the Property identification number.

\*Systems data includes associated systems and facilities for the HSR, such as ATP, communication systems, SP, SSP and TPSS.

**Data Sources:** Parcel Data - Contract Land Staff - April 26, 2017  
**Aerial Imagery:** USDA NAIP 2014







**Dallas to Houston**  
**High-Speed Rail Project**  
 Project Footprint  
 Segment 5  
 Sheet 433 of 536

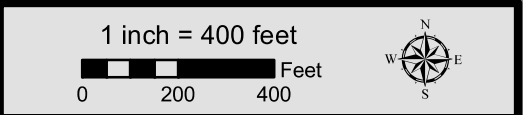
**Legend**

<p><b>Track Configuration</b></p> <ul style="list-style-type: none"> <li> Viaduct</li> <li> Embankment</li> <li> Cut</li> </ul> <p><b>Limits of Disturbance by Segment</b></p> <ul style="list-style-type: none"> <li> Segment 1</li> <li> Segment 2A</li> <li> Segment 2B</li> <li> Segment 3A</li> <li> Segment 3B</li> <li> Segment 3C</li> <li> Segment 4</li> <li> Segment 5</li> </ul> <p><b>Limits of Disturbance by Impact Type</b></p> <ul style="list-style-type: none"> <li> Permanent</li> <li> Temporary</li> <li> Railroad</li> <li> Property Boundary</li> <li> County Boundary</li> </ul>	<p><b>Limits of Disturbance by Discipline</b></p> <ul style="list-style-type: none"> <li> Rail</li> <li> Highway</li> <li> Train Maintenance Facility</li> <li> Maintenance of Way Facility</li> <li> Systems*</li> <li> Utilities</li> <li> Hydro/Drainage</li> <li> Station</li> <li> Structures</li> <li> Temporary Construction</li> </ul>
---	--

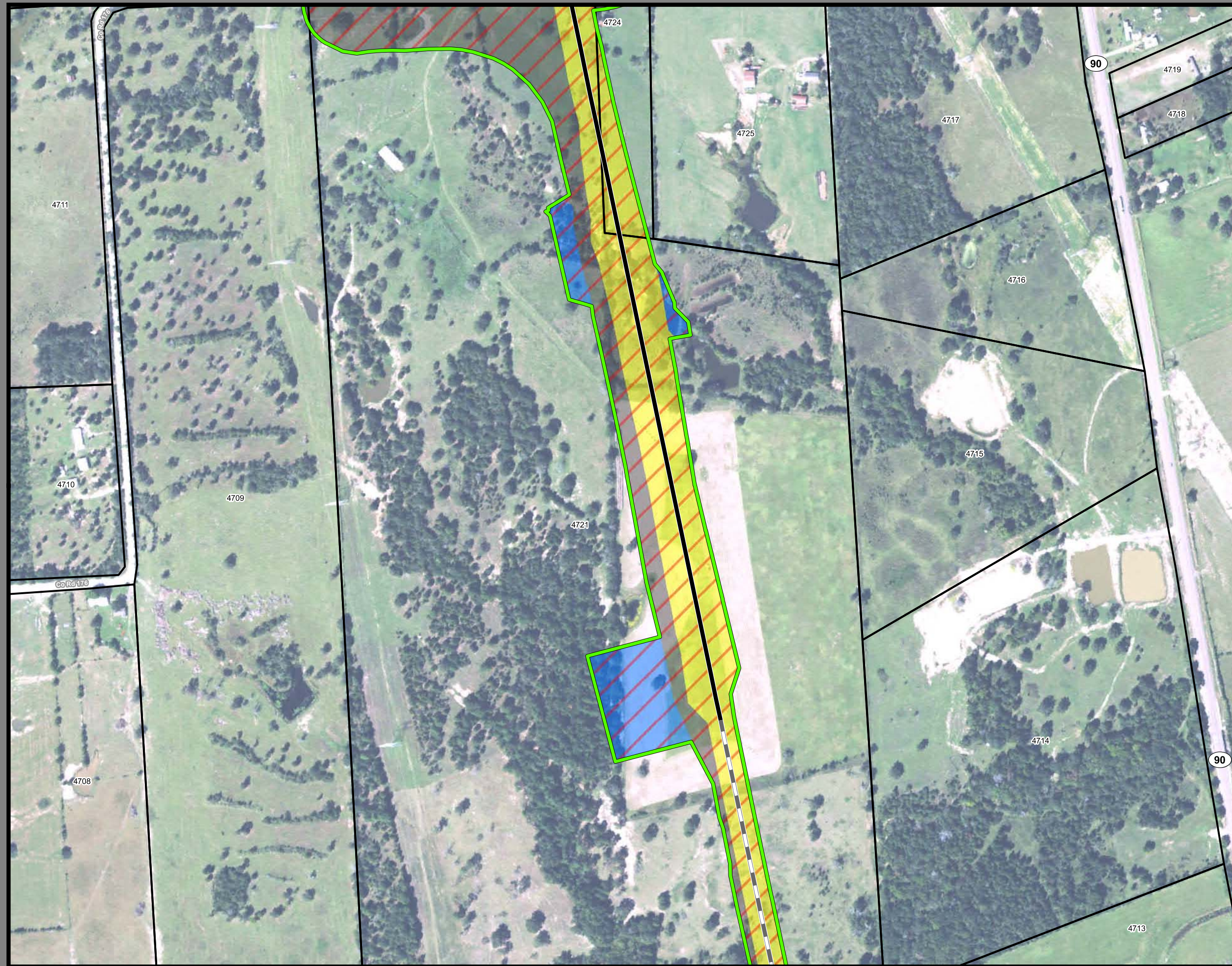
**Property ID** -This is a unique identifier that corresponds with the Property identification number.

\*Systems data includes associated systems and facilities for the HSR, such as ATP, communication systems, SP, SSP and TPSS.

**Data Sources:** Parcel Data - Contract Land Staff - April 26, 2017  
**Aerial Imagery:** USDA NAIP 2014







**Dallas to Houston  
High-Speed Rail Project  
Project Footprint  
Segment 5  
Sheet 434 of 536**

**Legend**

<b>Track Configuration</b>	<b>Limits of Disturbance by Discipline</b>
— Viaduct	Yellow Rail
— Embankment	Grey Highway
— Cut	Pink Train Maintenance Facility
<b>Limits of Disturbance by Segment</b>	Brown Maintenance of Way Facility
Green Segment 1	Cyan Systems*
Pink Segment 2A	Orange Utilities
Yellow Segment 2B	Blue Hydro/Drainage
Cyan Segment 3A	Green Station
Orange Segment 3B	Purple Structures
Blue Segment 3C	Light Pink Temporary Construction
Purple Segment 4	
Green Segment 5	
<b>Limits of Disturbance by Impact Type</b>	
Red hatched Permanent	
Green hatched Temporary	
Black Railroad	
Black Property Boundary	
Grey County Boundary	

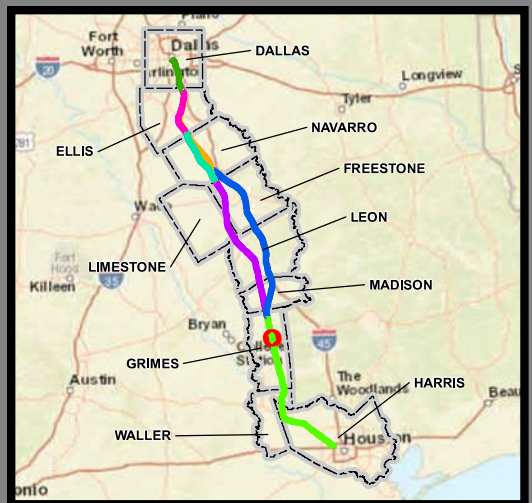
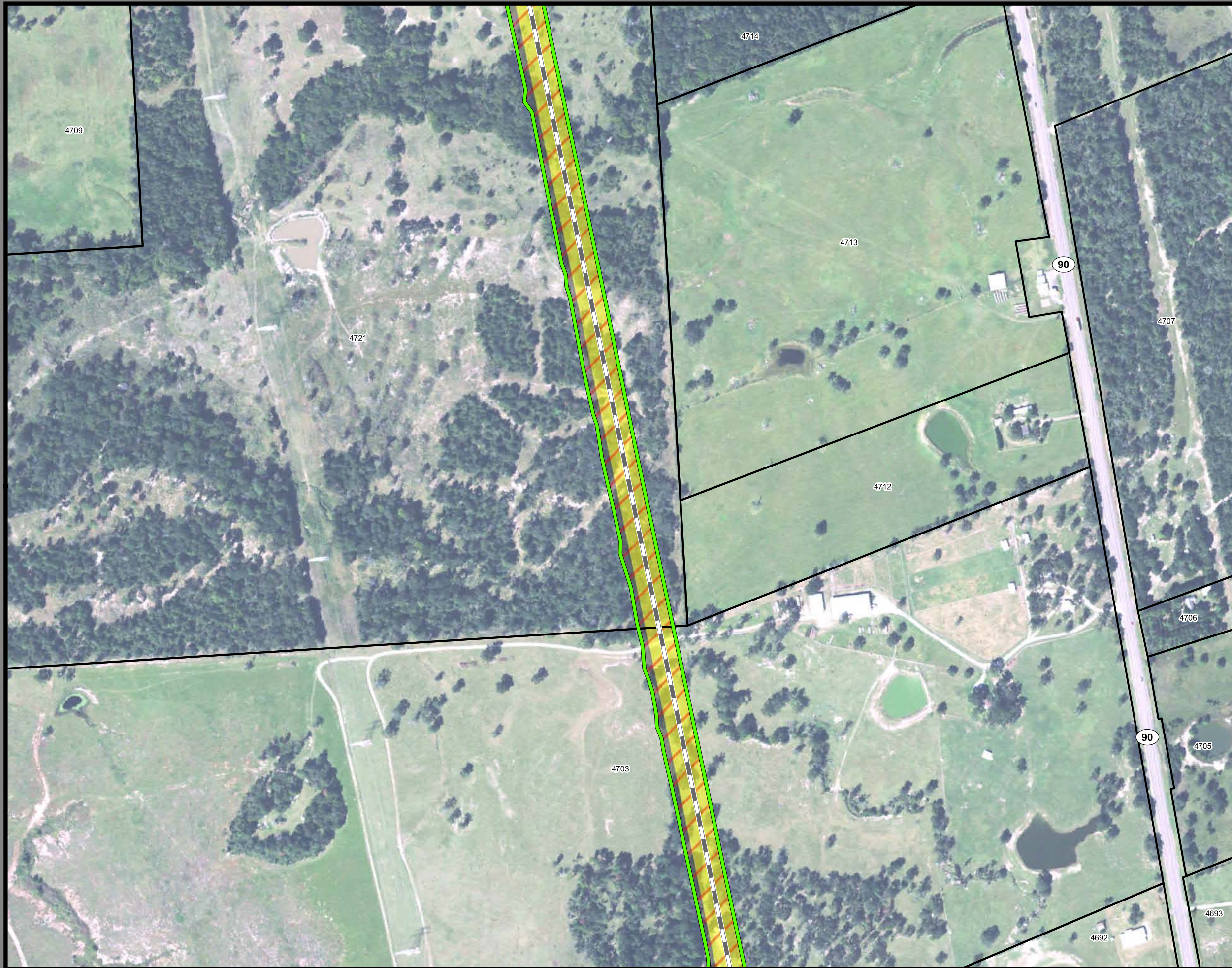
**Property ID** -This is a unique identifier that corresponds with the Property identification number.

\*Systems data includes associated systems and facilities for the HSR, such as ATP, communication systems, SP, SSP and TPSS.

**Data Sources:** Parcel Data - Contract Land Staff - April 26, 2017  
**Aerial Imagery:** USDA NAIP 2014







**Dallas to Houston  
High-Speed Rail Project  
Project Footprint  
Segment 5  
Sheet 435 of 536**

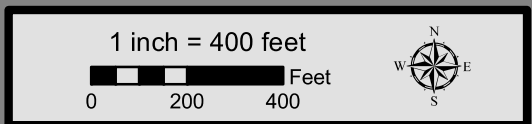
**Legend**

<b>Track Configuration</b>	<b>Limits of Disturbance by Discipline</b>
— Viaduct	Yellow: Rail
— Embankment	Grey: Highway
— Cut	Pink: Train Maintenance Facility
<b>Limits of Disturbance by Segment</b>	Brown: Maintenance of Way Facility
Green: Segment 1	Cyan: Systems*
Pink: Segment 2A	Orange: Utilities
Yellow: Segment 2B	Blue: Hydro/Drainage
Cyan: Segment 3A	Green: Station
Orange: Segment 3B	Purple: Structures
Blue: Segment 3C	Light Pink: Temporary Construction
Purple: Segment 4	
Light Green: Segment 5	
<b>Limits of Disturbance by Impact Type</b>	
Red Hatched: Permanent	
Green Hatched: Temporary	
— Railroad	
— Property Boundary	
— County Boundary	

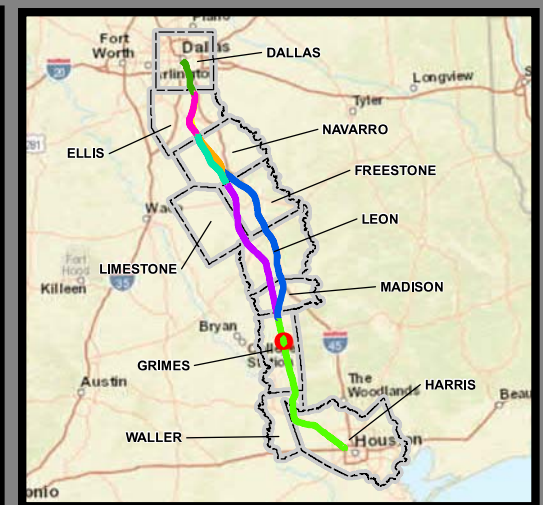
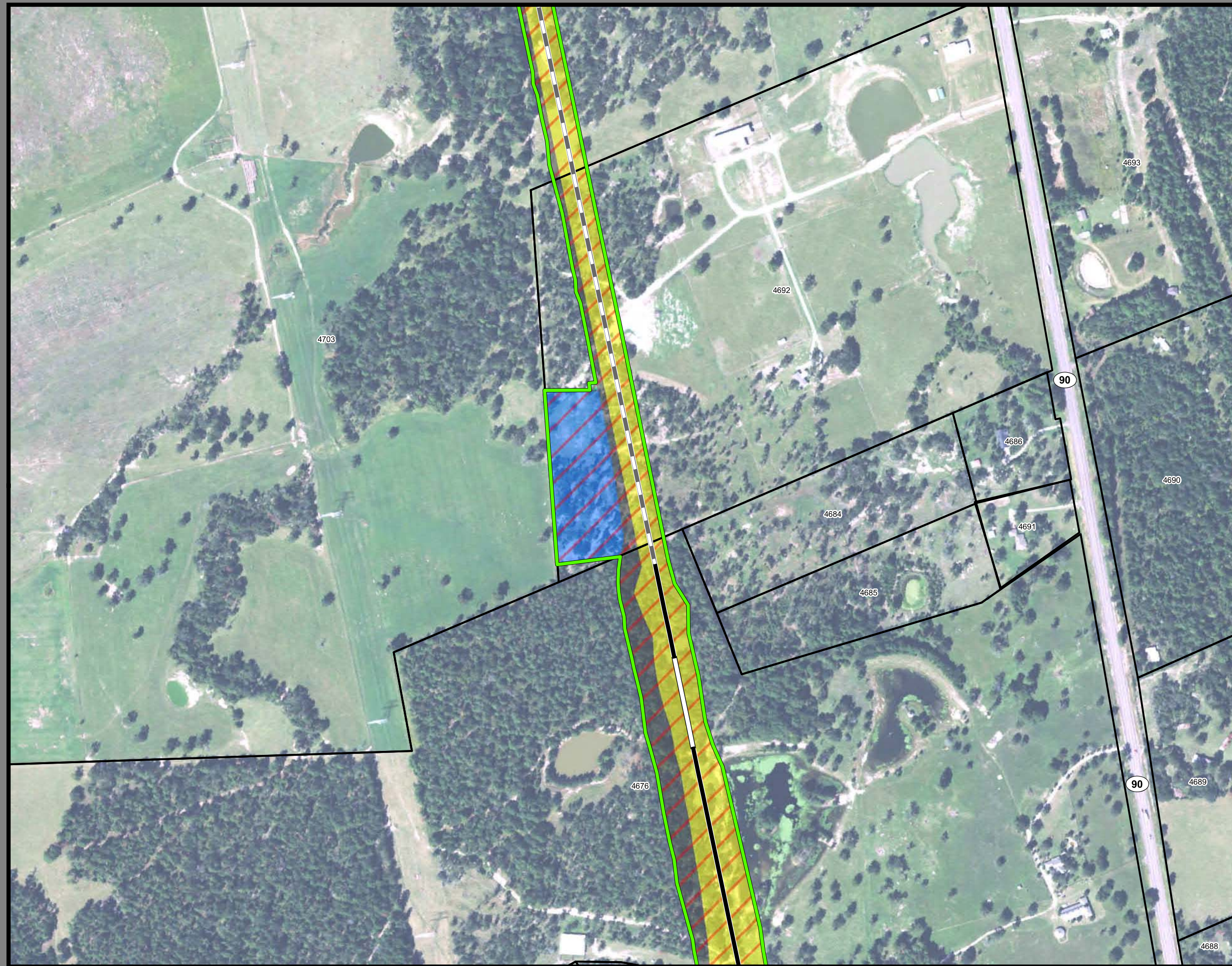
**Property ID** -This is a unique identifier that corresponds with the Property identification number.

\*Systems data includes associated systems and facilities for the HSR, such as ATP, communication systems, SP, SSP and TPSS.

**Data Sources:** Parcel Data - Contract Land Staff - April 26, 2017  
**Aerial Imagery:** USDA NAIP 2014







**Dallas to Houston  
High-Speed Rail Project  
Project Footprint  
Segment 5  
Sheet 436 of 536**

**Legend**

<b>Track Configuration</b>	<b>Limits of Disturbance by Discipline</b>
— Viaduct	Yellow: Rail
— Embankment	Grey: Highway
— Cut	Pink: Train Maintenance Facility
<b>Limits of Disturbance by Segment</b>	Brown: Maintenance of Way Facility
Green: Segment 1	Cyan: Systems*
Pink: Segment 2A	Orange: Utilities
Yellow: Segment 2B	Blue: Hydro/Drainage
Cyan: Segment 3A	Green: Station
Orange: Segment 3B	Purple: Structures
Blue: Segment 3C	Light Pink: Temporary Construction
Purple: Segment 4	
Green: Segment 5	
<b>Limits of Disturbance by Impact Type</b>	
Red Hatched: Permanent	
Green Hatched: Temporary	
— Railroad	
— Property Boundary	
— County Boundary	

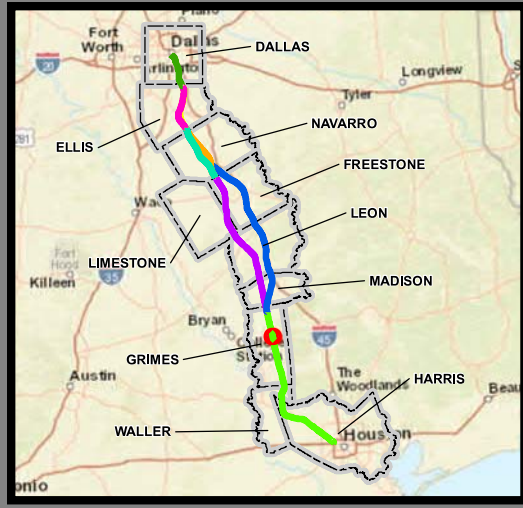
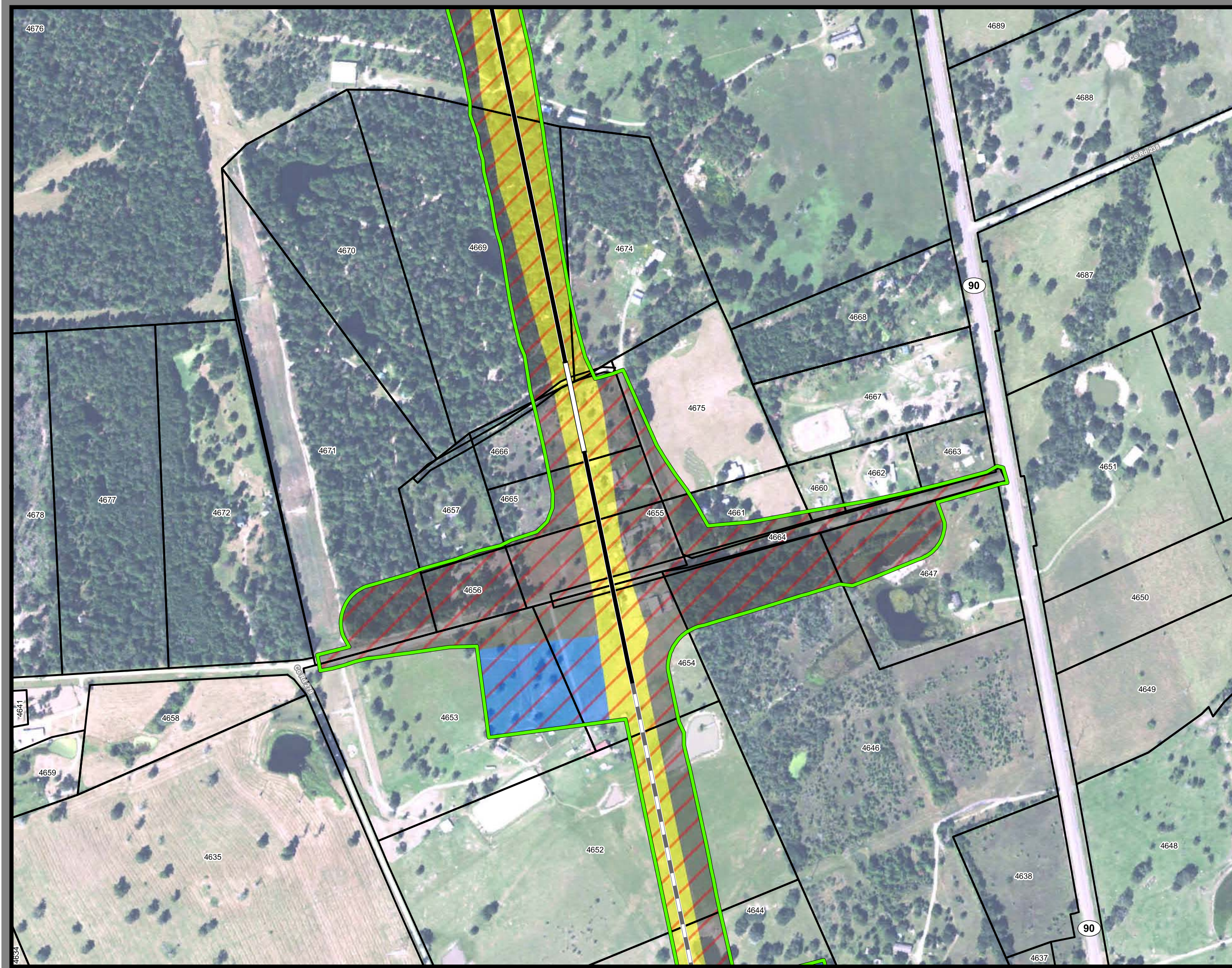
**Property ID** -This is a unique identifier that corresponds with the Property identification number.

\*Systems data includes associated systems and facilities for the HSR, such as ATP, communication systems, SP, SSP and TPSS.

**Data Sources:** Parcel Data - Contract Land Staff - April 26, 2017  
**Aerial Imagery:** USDA NAIP 2014







**Dallas to Houston  
High-Speed Rail Project  
Project Footprint  
Segment 5  
Sheet 437 of 536**

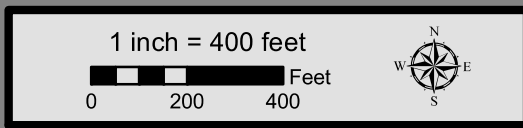
**Legend**

<b>Track Configuration</b>	<b>Limits of Disturbance by Discipline</b>
— Viaduct	Yellow: Rail
— Embankment	Grey: Highway
— Cut	Pink: Train Maintenance Facility
<b>Limits of Disturbance by Segment</b>	Brown: Maintenance of Way Facility
Green: Segment 1	Cyan: Systems*
Pink: Segment 2A	Orange: Utilities
Yellow: Segment 2B	Blue: Hydro/Drainage
Cyan: Segment 3A	Green: Station
Orange: Segment 3B	Purple: Structures
Blue: Segment 3C	Light Pink: Temporary Construction
Purple: Segment 4	
Green: Segment 5	
<b>Limits of Disturbance by Impact Type</b>	
Red Hatched: Permanent	
Green Hatched: Temporary	
— Railroad	
— Property Boundary	
— County Boundary	

**Property ID** -This is a unique identifier that corresponds with the Property identification number.

\*Systems data includes associated systems and facilities for the HSR, such as ATP, communication systems, SP, SSP and TPSS.

**Data Sources:** Parcel Data - Contract Land Staff - April 26, 2017  
**Aerial Imagery:** USDA NAIP 2014







**Dallas to Houston  
High-Speed Rail Project  
Project Footprint  
Segment 5  
Sheet 438 of 536**

**Legend**

<b>Track Configuration</b>	<b>Limits of Disturbance by Discipline</b>
— Viaduct	Yellow: Rail
— Embankment	Grey: Highway
— Cut	Pink: Train Maintenance Facility
<b>Limits of Disturbance by Segment</b>	Brown: Maintenance of Way Facility
Green: Segment 1	Cyan: Systems*
Pink: Segment 2A	Orange: Utilities
Yellow: Segment 2B	Blue: Hydro/Drainage
Cyan: Segment 3A	Green: Station
Orange: Segment 3B	Purple: Structures
Blue: Segment 3C	Light Blue: Temporary Construction
Purple: Segment 4	
Green: Segment 5	
<b>Limits of Disturbance by Impact Type</b>	
Red diagonal lines: Permanent	
Green diagonal lines: Temporary	
— Railroad	
— Property Boundary	
— County Boundary	

**Property ID** -This is a unique identifier that corresponds with the Property identification number.

\*Systems data includes associated systems and facilities for the HSR, such as ATP, communication systems, SP, SSP and TPSS.

**Data Sources:** Parcel Data - Contract Land Staff - April 26, 2017  
**Aerial Imagery:** USDA NAIP 2014

