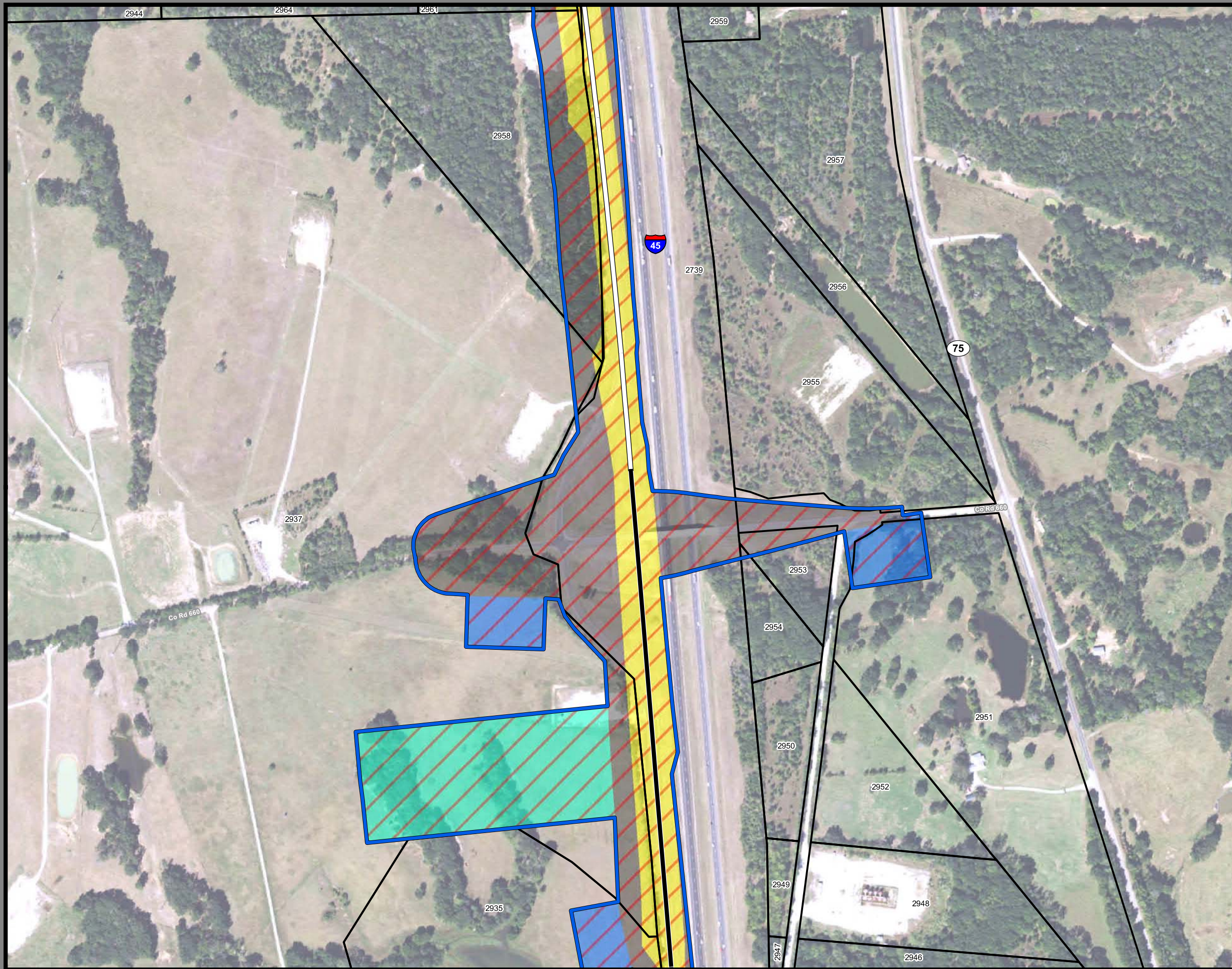


**Dallas to Houston High-Speed Rail
Draft Environmental Impact Statement**

**Appendix D:
Project Footprint
Mapbook Set 3 of 5**



**Federal Railroad
Administration**



**Dallas to Houston
High-Speed Rail Project**
Project Footprint
Segment 3C
Sheet 224 of 536

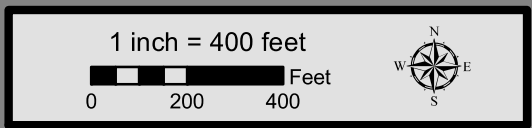
Legend

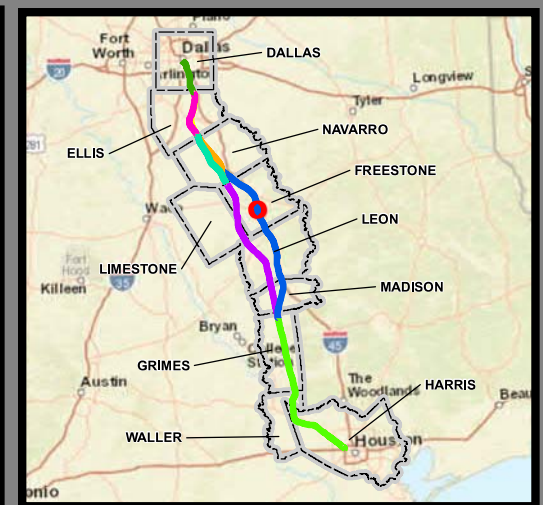
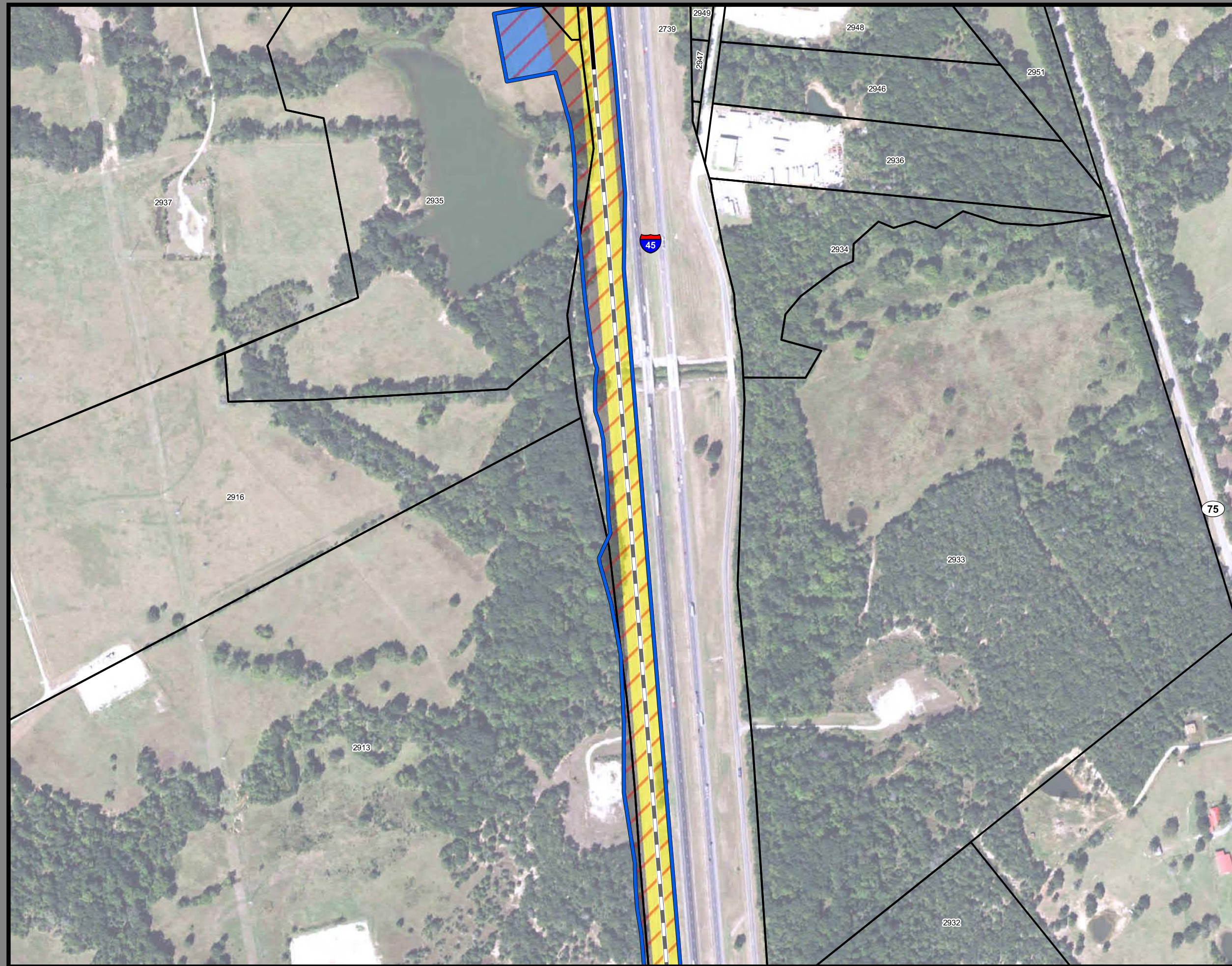
Track Configuration	Limits of Disturbance by Discipline
— Viaduct	Yellow: Rail
— Embankment	Grey: Highway
— Cut	Pink: Train Maintenance Facility
Limits of Disturbance by Segment	Brown: Maintenance of Way Facility
Green: Segment 1	Cyan: Systems*
Pink: Segment 2A	Orange: Utilities
Yellow: Segment 2B	Blue: Hydro/Drainage
Cyan: Segment 3A	Green: Station
Orange: Segment 3B	Purple: Structures
Blue: Segment 3C	Light Pink: Temporary Construction
Purple: Segment 4	
Green: Segment 5	
Limits of Disturbance by Impact Type	
Red Hatched: Permanent	
Green Hatched: Temporary	
— Railroad	
— Property Boundary	
— County Boundary	

Property ID -This is a unique identifier that corresponds with the Property identification number.

*Systems data includes associated systems and facilities for the HSR, such as ATP, communication systems, SP, SSP and TPSS.

Data Sources: Parcel Data - Contract Land Staff - April 26, 2017
Aerial Imagery: USDA NAIP 2014





**Dallas to Houston
High-Speed Rail Project
Project Footprint
Segment 3C
Sheet 225 of 536**

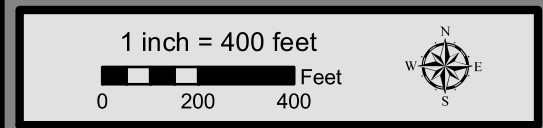
Legend

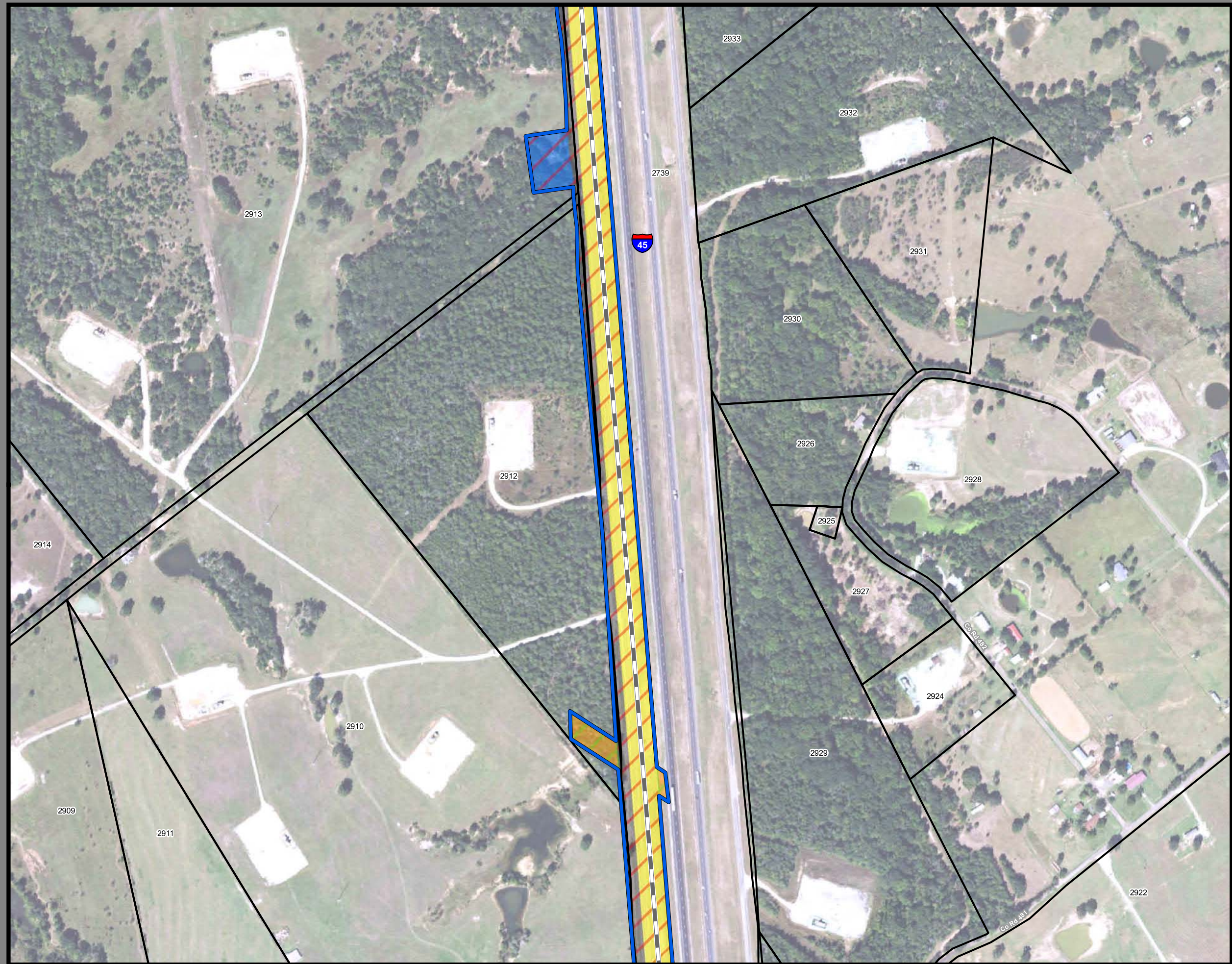
Track Configuration	Limits of Disturbance by Discipline
— Viaduct	Yellow: Rail
— Embankment	Grey: Highway
— Cut	Pink: Train Maintenance Facility
Limits of Disturbance by Segment	Brown: Maintenance of Way Facility
Green: Segment 1	Cyan: Systems*
Pink: Segment 2A	Orange: Utilities
Yellow: Segment 2B	Blue: Hydro/Drainage
Cyan: Segment 3A	Green: Station
Orange: Segment 3B	Purple: Structures
Blue: Segment 3C	Light Pink: Temporary Construction
Purple: Segment 4	
Light Green: Segment 5	
Limits of Disturbance by Impact Type	
Red Hatched: Permanent	
Green Hatched: Temporary	
— Railroad	
— Property Boundary	
— County Boundary	

Property ID -This is a unique identifier that corresponds with the Property identification number.

*Systems data includes associated systems and facilities for the HSR, such as ATP, communication systems, SP, SSP and TPSS.

Data Sources: Parcel Data - Contract Land Staff - April 26, 2017
Aerial Imagery: USDA NAIP 2014





**Dallas to Houston
High-Speed Rail Project
Project Footprint
Segment 3C
Sheet 226 of 536**

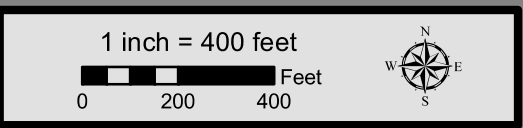
Legend

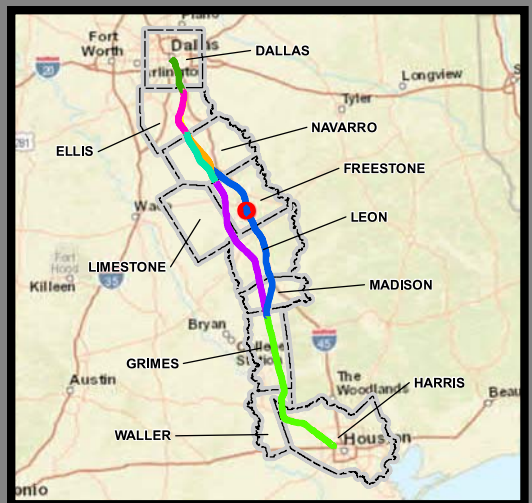
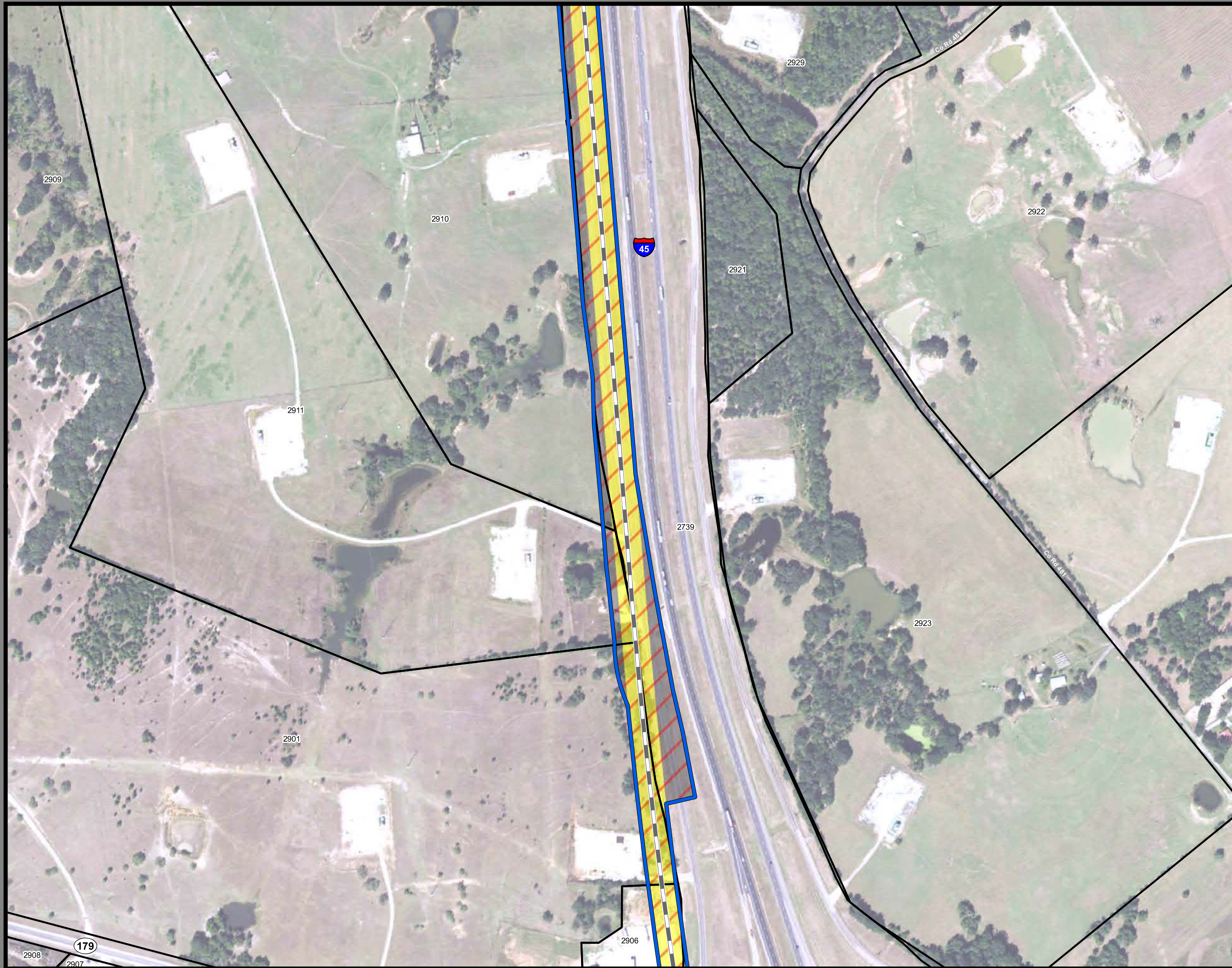
Track Configuration	Limits of Disturbance by Discipline
— Viaduct	Yellow: Rail
— Embankment	Grey: Highway
— Cut	Pink: Train Maintenance Facility
Limits of Disturbance by Segment	Brown: Maintenance of Way Facility
Green: Segment 1	Cyan: Systems*
Pink: Segment 2A	Orange: Utilities
Yellow: Segment 2B	Blue: Hydro/Drainage
Cyan: Segment 3A	Green: Station
Orange: Segment 3B	Purple: Structures
Blue: Segment 3C	Light Pink: Temporary Construction
Purple: Segment 4	
Light Green: Segment 5	
Limits of Disturbance by Impact Type	
Red Hatched: Permanent	
Green Hatched: Temporary	
— Railroad	
— Property Boundary	
— County Boundary	

Property ID -This is a unique identifier that corresponds with the Property identification number.

*Systems data includes associated systems and facilities for the HSR, such as ATP, communication systems, SP, SSP and TPSS.

Data Sources: Parcel Data - Contract Land Staff - April 26, 2017
Aerial Imagery: USDA NAIP 2014





**Dallas to Houston
High-Speed Rail Project
Project Footprint
Segment 3C
Sheet 227 of 536**

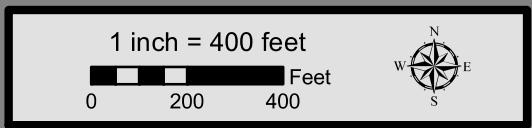
Legend

Track Configuration	Limits of Disturbance by Discipline
— Viaduct	Yellow: Rail
— Embankment	Grey: Highway
— Cut	Pink: Train Maintenance Facility
Limits of Disturbance by Segment	Brown: Maintenance of Way Facility
Green: Segment 1	Cyan: Systems*
Pink: Segment 2A	Orange: Utilities
Yellow: Segment 2B	Blue: Hydro/Drainage
Cyan: Segment 3A	Green: Station
Orange: Segment 3B	Purple: Structures
Blue: Segment 3C	Light Pink: Temporary Construction
Purple: Segment 4	
Green: Segment 5	
Limits of Disturbance by Impact Type	
Red Hatched: Permanent	
Green Hatched: Temporary	
— Railroad	
— Property Boundary	
— County Boundary	

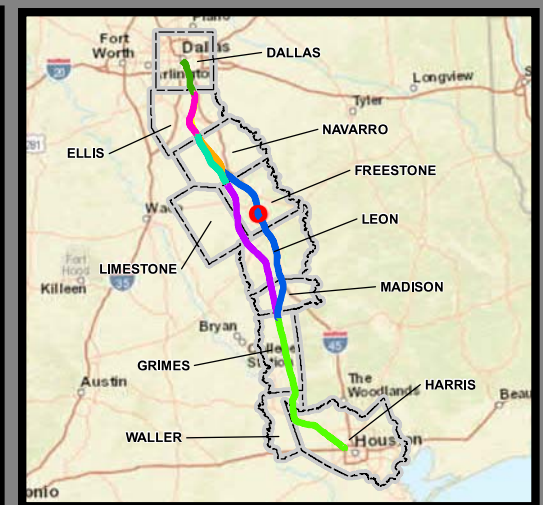
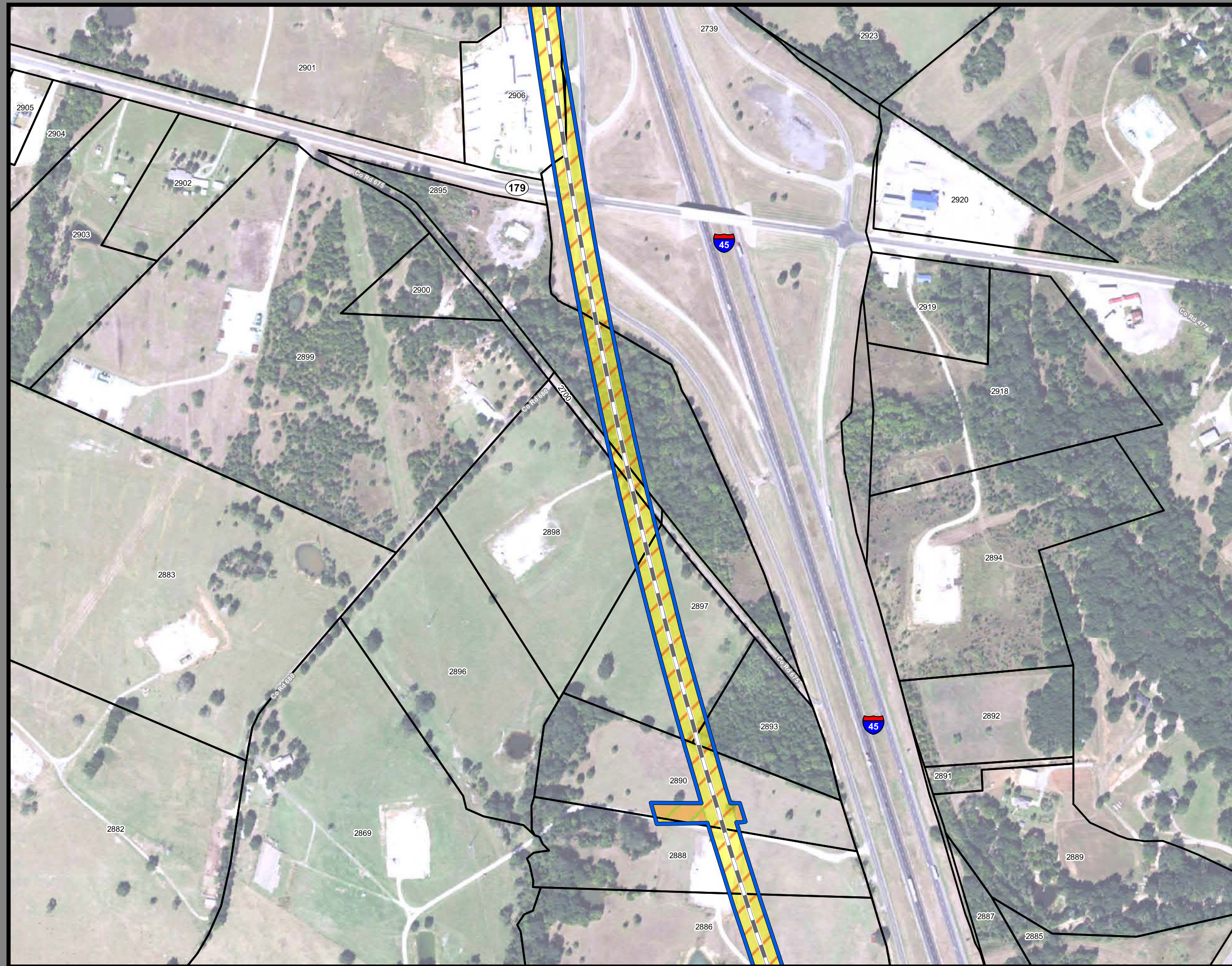
Property ID -This is a unique identifier that corresponds with the Property identification number.

*Systems data includes associated systems and facilities for the HSR, such as ATP, communication systems, SP, SSP and TPSS.

Data Sources: Parcel Data - Contract Land Staff - April 26, 2017
Aerial Imagery: USDA NAIP 2014



2908 **179** 2907



**Dallas to Houston
High-Speed Rail Project
Project Footprint
Segment 3C
Sheet 228 of 536**

Legend

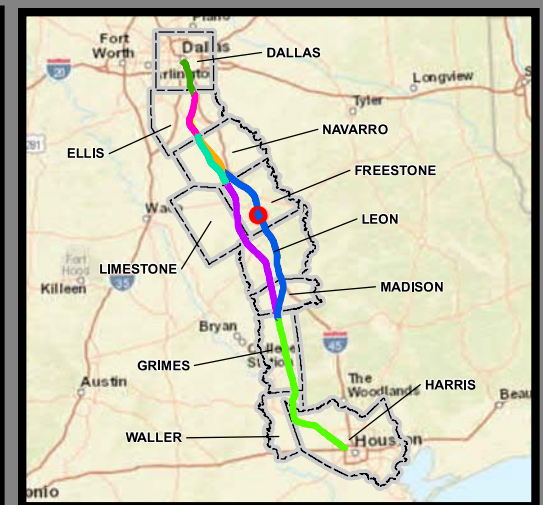
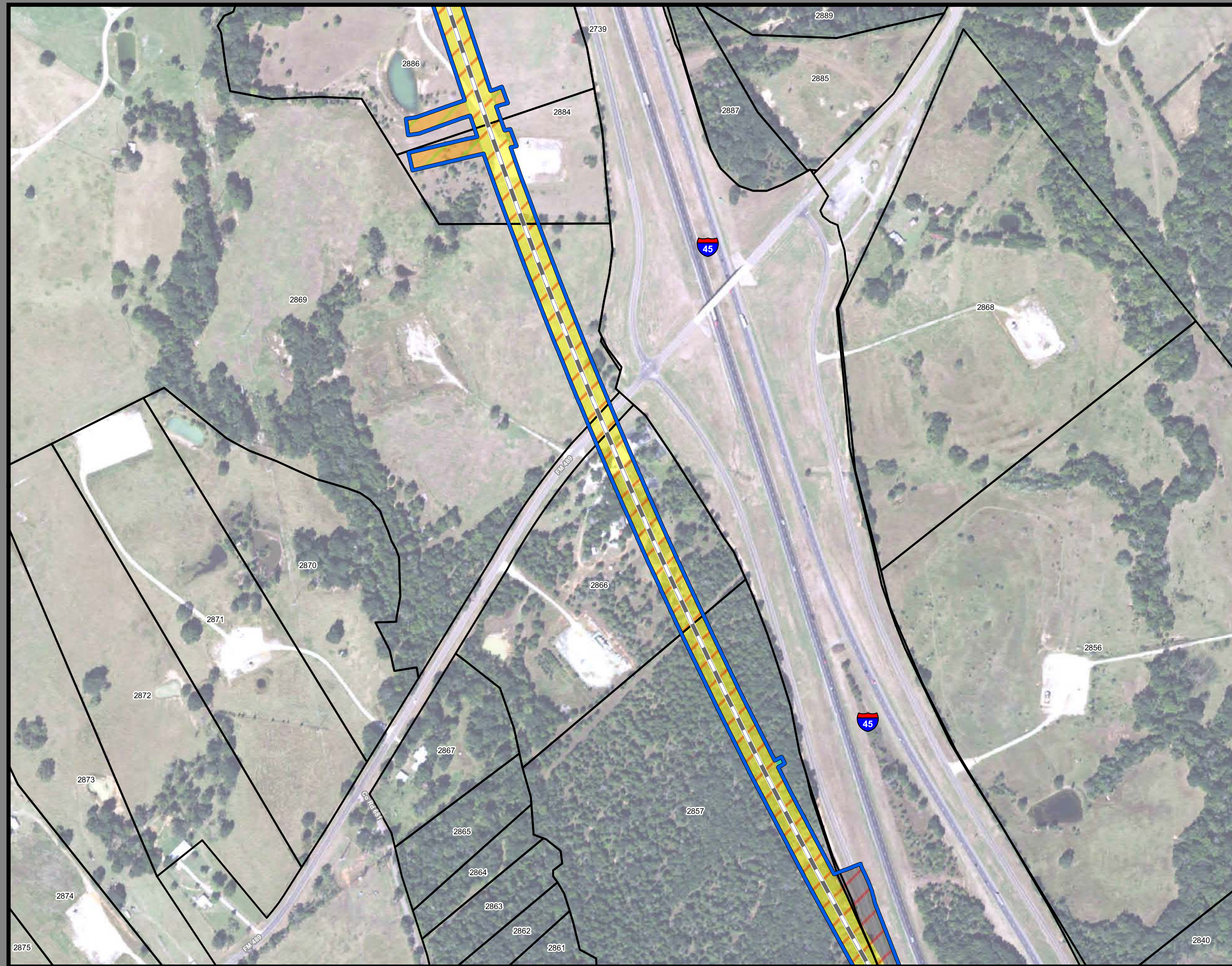
Track Configuration	Limits of Disturbance by Discipline
— Viaduct	Yellow Rail
— Embankment	Grey Highway
— Cut	Pink Train Maintenance Facility
Limits of Disturbance by Segment	Brown Maintenance of Way Facility
Green Segment 1	Cyan Systems*
Pink Segment 2A	Orange Utilities
Yellow Segment 2B	Blue Hydro/Drainage
Cyan Segment 3A	Green Station
Orange Segment 3B	Purple Structures
Blue Segment 3C	Light Pink Temporary Construction
Purple Segment 4	
Light Green Segment 5	
Limits of Disturbance by Impact Type	
Red/White Diagonal Permanent	
Green/White Diagonal Temporary	
— Railroad	
Black Property Boundary	
Dashed County Boundary	

Property ID -This is a unique identifier that corresponds with the Property identification number.

*Systems data includes associated systems and facilities for the HSR, such as ATP, communication systems, SP, SSP and TPSS.

Data Sources: Parcel Data - Contract Land Staff - April 26, 2017
Aerial Imagery: USDA NAIP 2014





**Dallas to Houston
High-Speed Rail Project**
Project Footprint
Segment 3C
Sheet 229 of 536

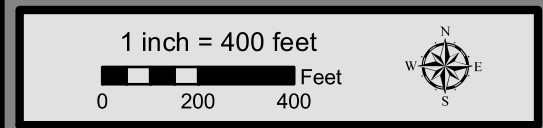
Legend

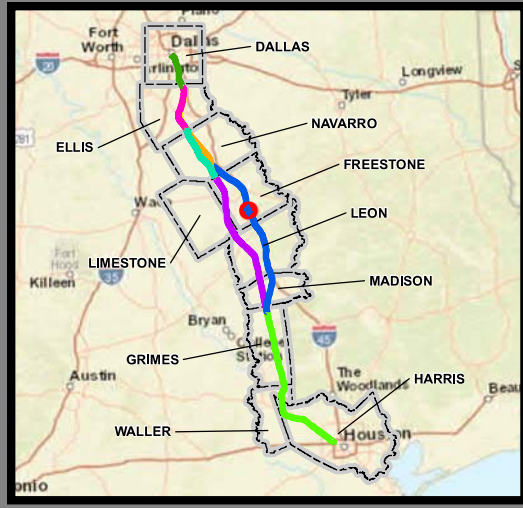
Track Configuration	Limits of Disturbance by Discipline
— Viaduct	Yellow: Rail
— Embankment	Grey: Highway
— Cut	Pink: Train Maintenance Facility
Limits of Disturbance by Segment	Brown: Maintenance of Way Facility
Green: Segment 1	Cyan: Systems*
Pink: Segment 2A	Orange: Utilities
Yellow: Segment 2B	Blue: Hydro/Drainage
Cyan: Segment 3A	Green: Station
Orange: Segment 3B	Purple: Structures
Blue: Segment 3C	Light Pink: Temporary Construction
Purple: Segment 4	
Green: Segment 5	
Limits of Disturbance by Impact Type	
Red/White Hatched: Permanent	
Green/White Hatched: Temporary	
— Railroad	
— Property Boundary	
— County Boundary	

Property ID -This is a unique identifier that corresponds with the Property identification number.

*Systems data includes associated systems and facilities for the HSR, such as ATP, communication systems, SP, SSP and TPSS.

Data Sources: Parcel Data - Contract Land Staff - April 26, 2017
Aerial Imagery: USDA NAIP 2014





**Dallas to Houston
High-Speed Rail Project
Project Footprint
Segment 3C
Sheet 230 of 536**

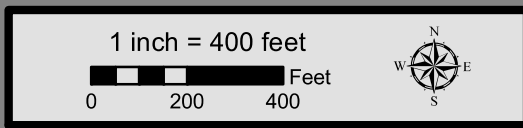
Legend

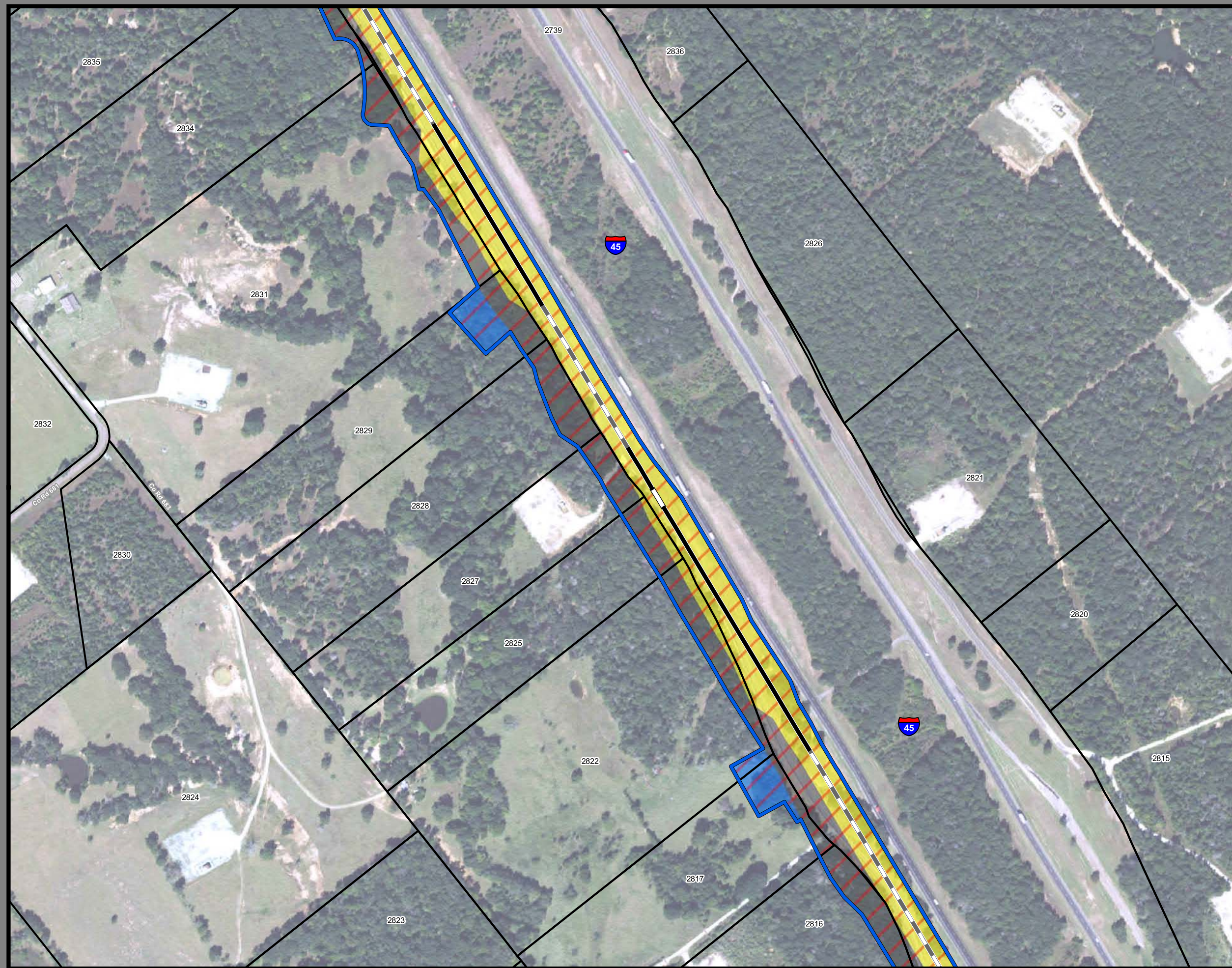
Track Configuration	Limits of Disturbance by Discipline
— Viaduct	Yellow Rail
— Embankment	Grey Highway
— Cut	Pink Train Maintenance Facility
Limits of Disturbance by Segment	Brown Maintenance of Way Facility
Green Segment 1	Cyan Systems*
Pink Segment 2A	Orange Utilities
Yellow Segment 2B	Blue Hydro/Drainage
Cyan Segment 3A	Green Station
Orange Segment 3B	Purple Structures
Blue Segment 3C	Light Pink Temporary Construction
Purple Segment 4	
Light Green Segment 5	
Limits of Disturbance by Impact Type	
Red/White Diagonal Permanent	
Green/White Diagonal Temporary	
Black Railroad	
Black Property Boundary	
Grey County Boundary	

Property ID -This is a unique identifier that corresponds with the Property identification number.

*Systems data includes associated systems and facilities for the HSR, such as ATP, communication systems, SP, SSP and TPSS.

Data Sources: Parcel Data - Contract Land Staff - April 26, 2017
Aerial Imagery: USDA NAIP 2014





**Dallas to Houston
High-Speed Rail Project
Project Footprint
Segment 3C
Sheet 231 of 536**

Legend

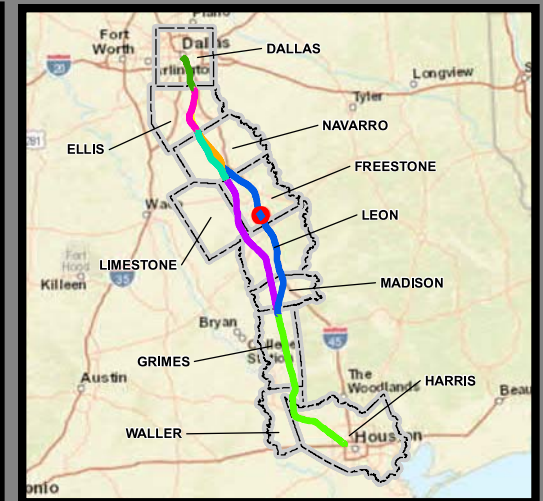
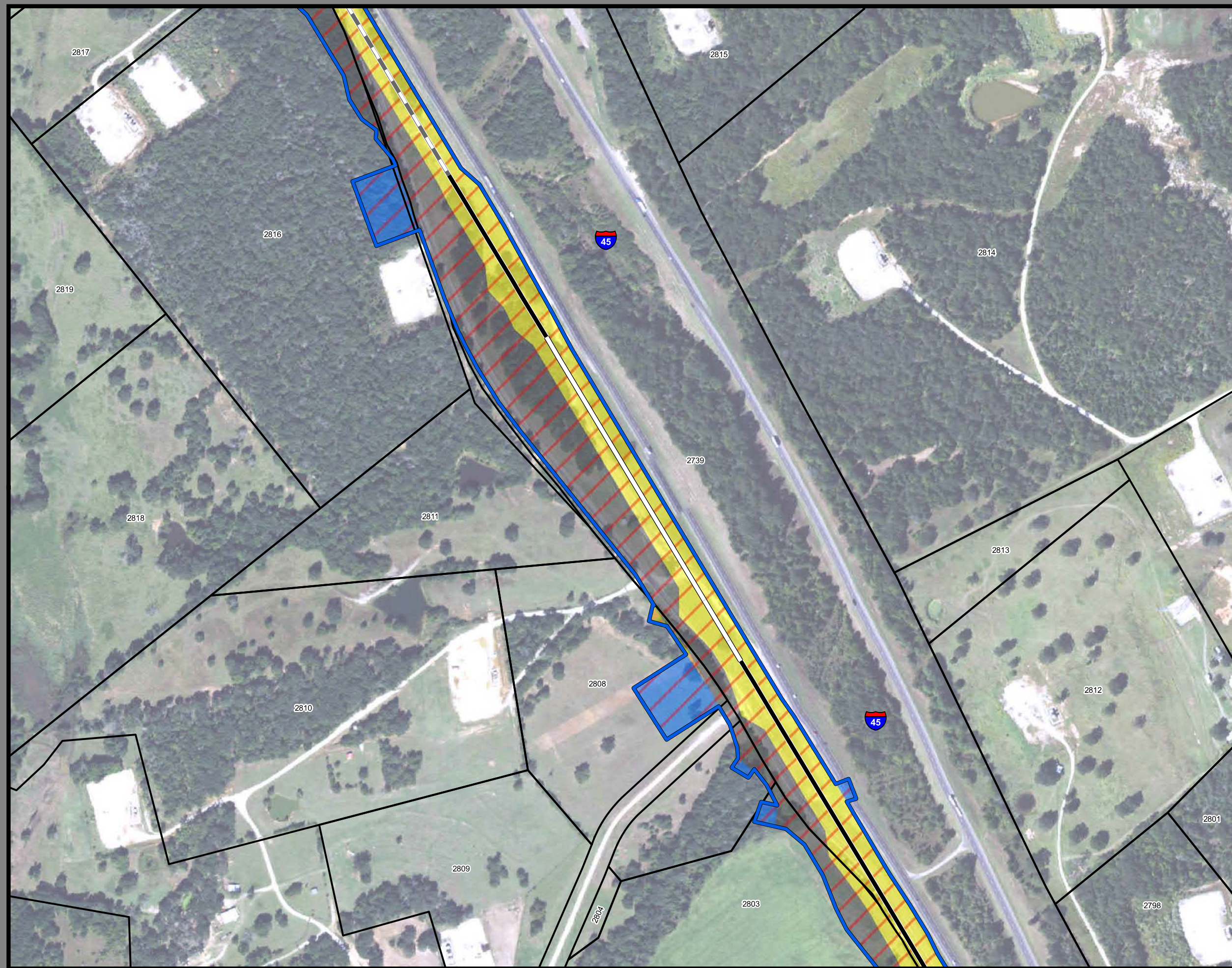
Track Configuration	Limits of Disturbance by Discipline
— Viaduct	Yellow: Rail
— Embankment	Grey: Highway
— Cut	Pink: Train Maintenance Facility
Limits of Disturbance by Segment	Brown: Maintenance of Way Facility
Green: Segment 1	Cyan: Systems*
Pink: Segment 2A	Orange: Utilities
Yellow: Segment 2B	Blue: Hydro/Drainage
Cyan: Segment 3A	Green: Station
Orange: Segment 3B	Purple: Structures
Blue: Segment 3C	Light Pink: Temporary Construction
Purple: Segment 4	
Light Green: Segment 5	
Limits of Disturbance by Impact Type	
Red/White Diagonal: Permanent	
Green/White Diagonal: Temporary	
— Railroad	
— Property Boundary	
— County Boundary	

Property ID -This is a unique identifier that corresponds with the Property identification number.

*Systems data includes associated systems and facilities for the HSR, such as ATP, communication systems, SP, SSP and TPSS.

Data Sources: Parcel Data - Contract Land Staff - April 26, 2017
Aerial Imagery: USDA NAIP 2014





**Dallas to Houston
High-Speed Rail Project
Project Footprint
Segment 3C
Sheet 232 of 536**

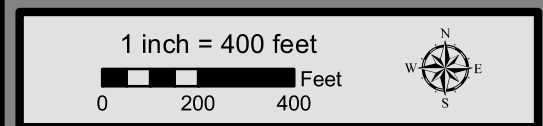
Legend

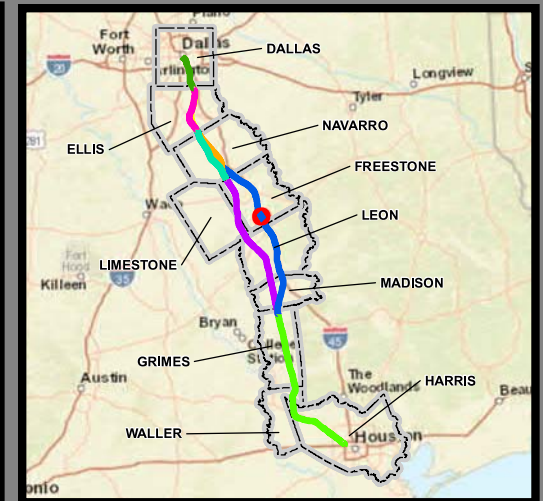
Track Configuration	Limits of Disturbance by Discipline
— Viaduct	Yellow: Rail
— Embankment	Grey: Highway
— Cut	Pink: Train Maintenance Facility
Limits of Disturbance by Segment	Brown: Maintenance of Way Facility
Green: Segment 1	Cyan: Systems*
Pink: Segment 2A	Orange: Utilities
Yellow: Segment 2B	Blue: Hydro/Drainage
Cyan: Segment 3A	Green: Station
Orange: Segment 3B	Purple: Structures
Blue: Segment 3C	Light Pink: Temporary Construction
Purple: Segment 4	
Light Green: Segment 5	
Limits of Disturbance by Impact Type	
Red Hatched: Permanent	
Green Hatched: Temporary	
— Railroad	
— Property Boundary	
— County Boundary	

Property ID -This is a unique identifier that corresponds with the Property identification number.

*Systems data includes associated systems and facilities for the HSR, such as ATP, communication systems, SP, SSP and TPSS.

Data Sources: Parcel Data - Contract Land Staff - April 26, 2017
Aerial Imagery: USDA NAIP 2014





**Dallas to Houston
High-Speed Rail Project
Project Footprint
Segment 3C
Sheet 233 of 536**

Legend

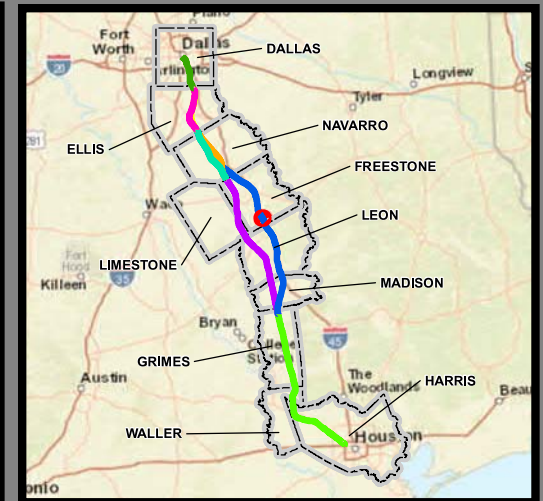
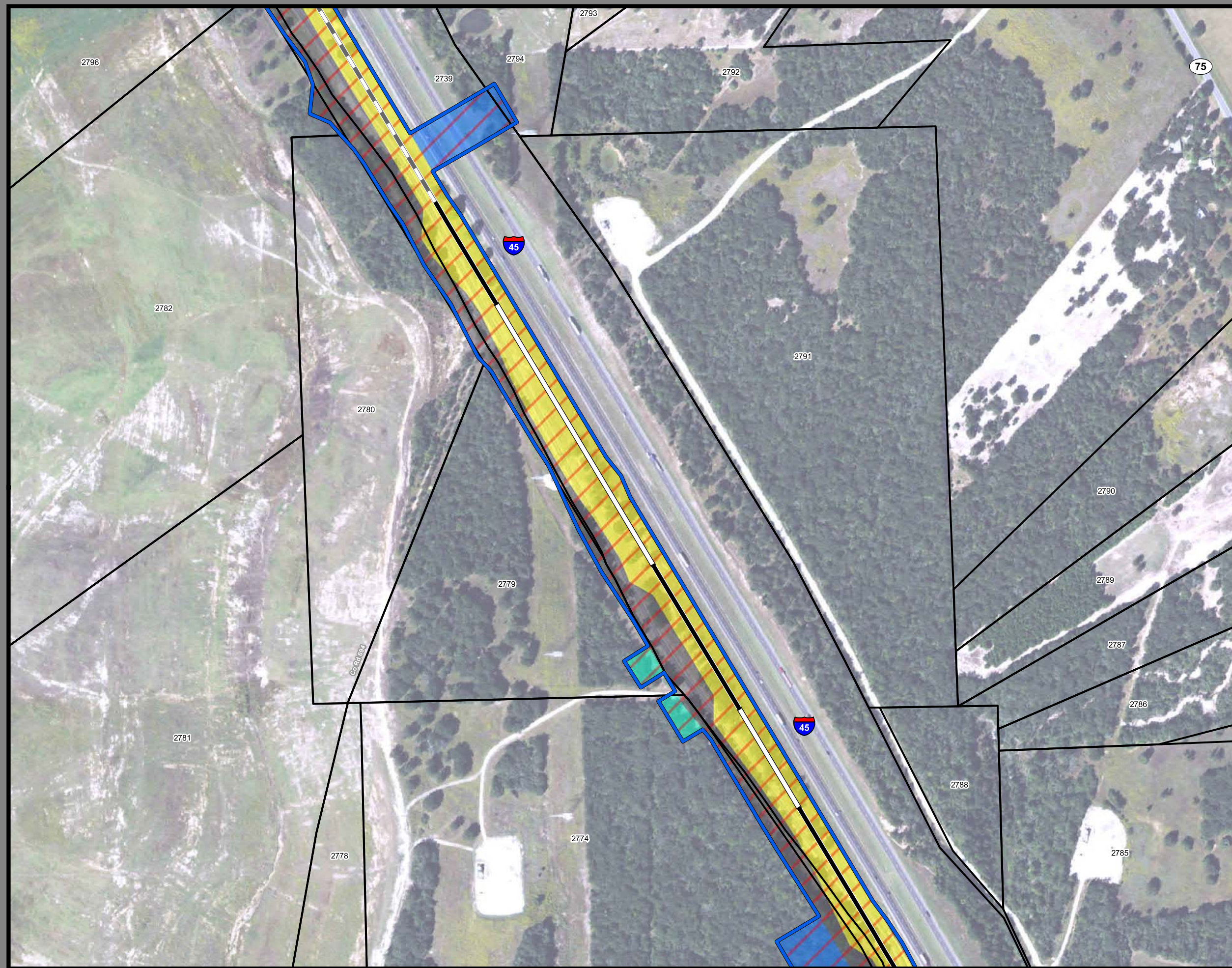
Track Configuration	Limits of Disturbance by Discipline
— Viaduct	Yellow Rail
— Embankment	Grey Highway
— Cut	Pink Train Maintenance Facility
Limits of Disturbance by Segment	Brown Maintenance of Way Facility
Green Segment 1	Cyan Systems*
Pink Segment 2A	Orange Utilities
Yellow Segment 2B	Blue Hydro/Drainage
Cyan Segment 3A	Green Station
Orange Segment 3B	Purple Structures
Blue Segment 3C	Light Pink Temporary Construction
Purple Segment 4	
Light Green Segment 5	
Limits of Disturbance by Impact Type	
Red Diagonal Permanent	
Green Diagonal Temporary	
Black Railroad	
Black Property Boundary	
Grey County Boundary	

Property ID -This is a unique identifier that corresponds with the Property identification number.

*Systems data includes associated systems and facilities for the HSR, such as ATP, communication systems, SP, SSP and TPSS.

Data Sources: Parcel Data - Contract Land Staff - April 26, 2017
Aerial Imagery: USDA NAIP 2014





**Dallas to Houston
High-Speed Rail Project
Project Footprint
Segment 3C
Sheet 234 of 536**

Legend

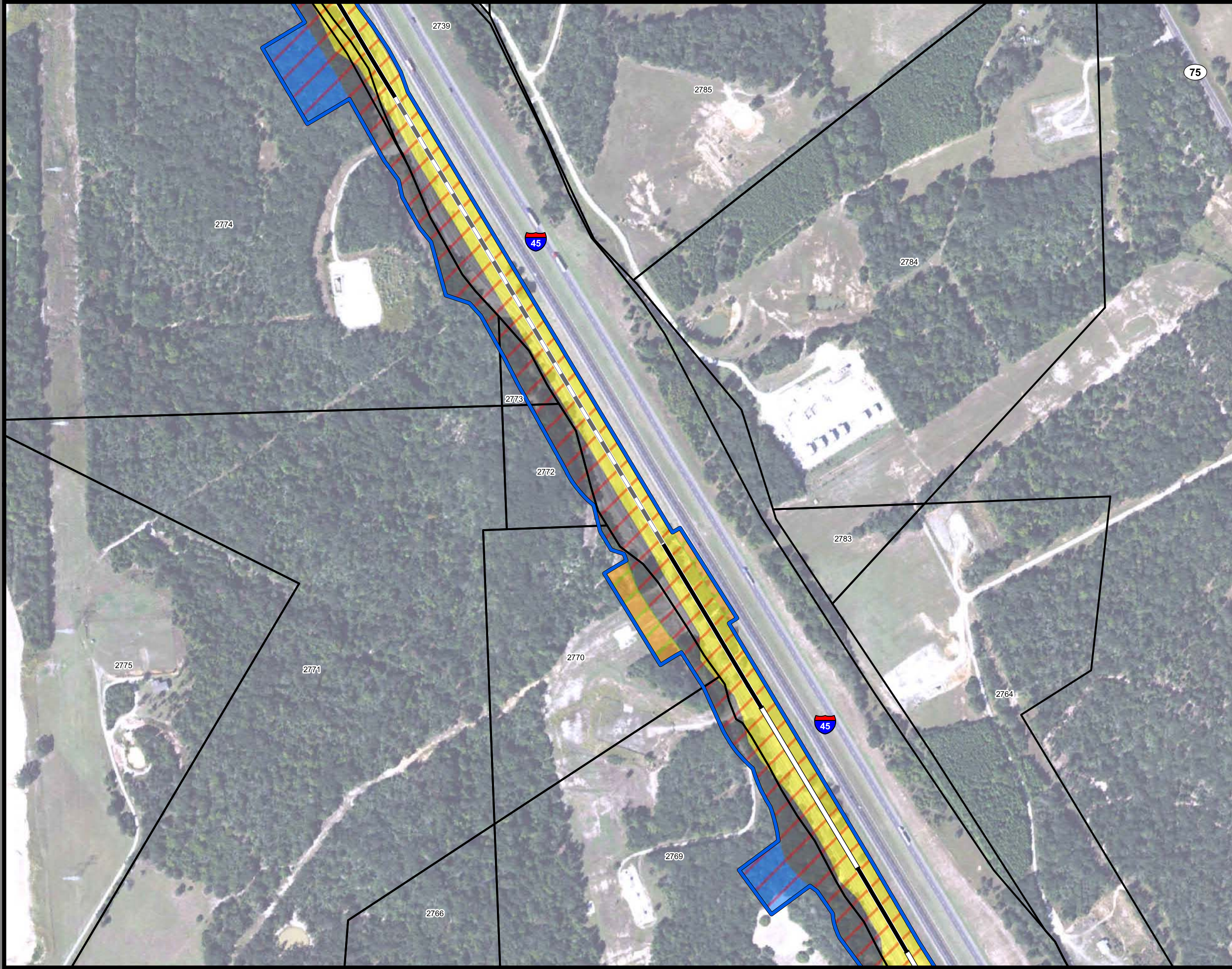
Track Configuration	Limits of Disturbance by Discipline
— Viaduct	Yellow Rail
— Embankment	Grey Highway
— Cut	Pink Train Maintenance Facility
Limits of Disturbance by Segment	Brown Maintenance of Way Facility
Green Segment 1	Cyan Systems*
Pink Segment 2A	Orange Utilities
Yellow Segment 2B	Blue Hydro/Drainage
Cyan Segment 3A	Green Station
Orange Segment 3B	Purple Structures
Blue Segment 3C	Light Pink Temporary Construction
Purple Segment 4	
Light Green Segment 5	
Limits of Disturbance by Impact Type	
Red/White Diagonal Permanent	
Green/White Diagonal Temporary	
Black Railroad	
Black Property Boundary	
Grey County Boundary	

Property ID -This is a unique identifier that corresponds with the Property identification number.

*Systems data includes associated systems and facilities for the HSR, such as ATP, communication systems, SP, SSP and TPSS.

Data Sources: Parcel Data - Contract Land Staff - April 26, 2017
Aerial Imagery: USDA NAIP 2014





**Dallas to Houston
High-Speed Rail Project
Project Footprint
Segment 3C
Sheet 235 of 536**

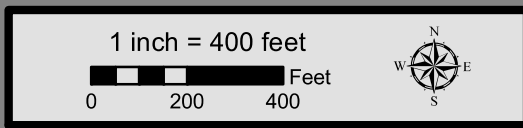
Legend

Track Configuration	Limits of Disturbance by Discipline
— Viaduct	Yellow: Rail
— Embankment	Grey: Highway
— Cut	Pink: Train Maintenance Facility
Limits of Disturbance by Segment	Brown: Maintenance of Way Facility
Green: Segment 1	Cyan: Systems*
Pink: Segment 2A	Orange: Utilities
Yellow: Segment 2B	Blue: Hydro/Drainage
Cyan: Segment 3A	Green: Station
Orange: Segment 3B	Purple: Structures
Blue: Segment 3C	Light Pink: Temporary Construction
Purple: Segment 4	
Light Green: Segment 5	
Limits of Disturbance by Impact Type	
Red/White Hatched: Permanent	
Green/White Hatched: Temporary	
— Railroad	
— Property Boundary	
— County Boundary	

Property ID -This is a unique identifier that corresponds with the Property identification number.

*Systems data includes associated systems and facilities for the HSR, such as ATP, communication systems, SP, SSP and TPSS.

Data Sources: Parcel Data - Contract Land Staff - April 26, 2017
Aerial Imagery: USDA NAIP 2014





**Dallas to Houston
High-Speed Rail Project
Project Footprint
Segment 3C
Sheet 236 of 536**

Legend

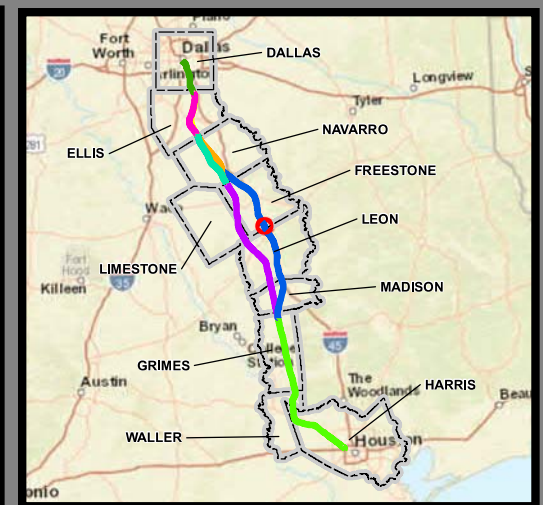
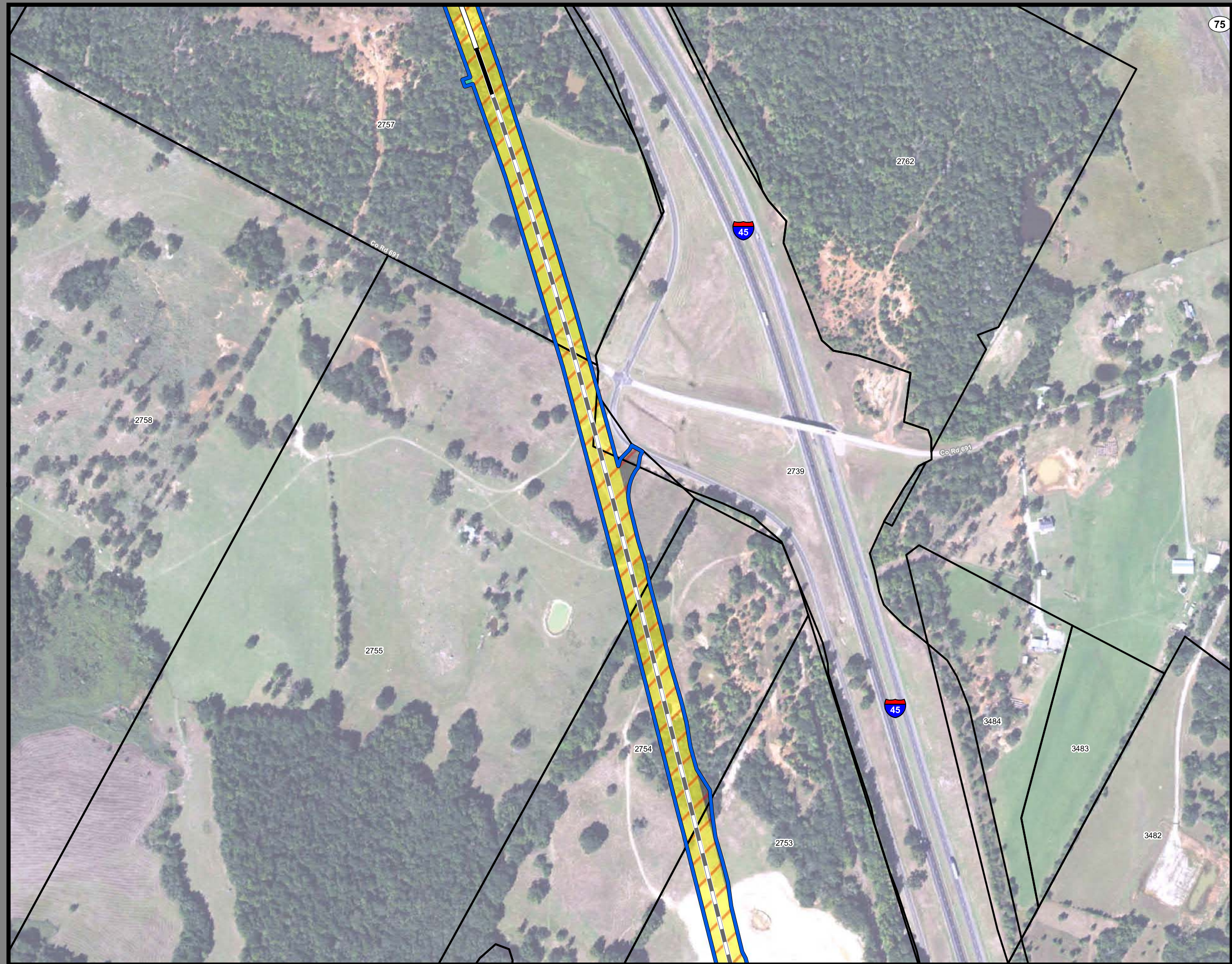
Track Configuration	Limits of Disturbance by Discipline
— Viaduct	Yellow Rail
— Embankment	Grey Highway
— Cut	Pink Train Maintenance Facility
Limits of Disturbance by Segment	Brown Maintenance of Way Facility
Green Segment 1	Cyan Systems*
Pink Segment 2A	Orange Utilities
Yellow Segment 2B	Blue Hydro/Drainage
Cyan Segment 3A	Green Station
Orange Segment 3B	Purple Structures
Blue Segment 3C	Light Pink Temporary Construction
Purple Segment 4	
Light Green Segment 5	
Limits of Disturbance by Impact Type	
Red/White Diagonal Permanent	
Green/White Diagonal Temporary	
Black Railroad	
Black Property Boundary	
Grey County Boundary	

Property ID -This is a unique identifier that corresponds with the Property identification number.

*Systems data includes associated systems and facilities for the HSR, such as ATP, communication systems, SP, SSP and TPSS.

Data Sources: Parcel Data - Contract Land Staff - April 26, 2017
Aerial Imagery: USDA NAIP 2014





**Dallas to Houston
High-Speed Rail Project
Project Footprint
Segment 3C
Sheet 237 of 536**

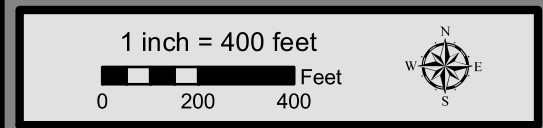
Legend

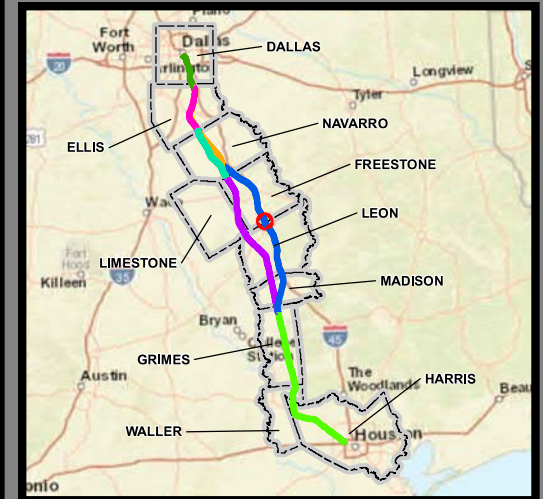
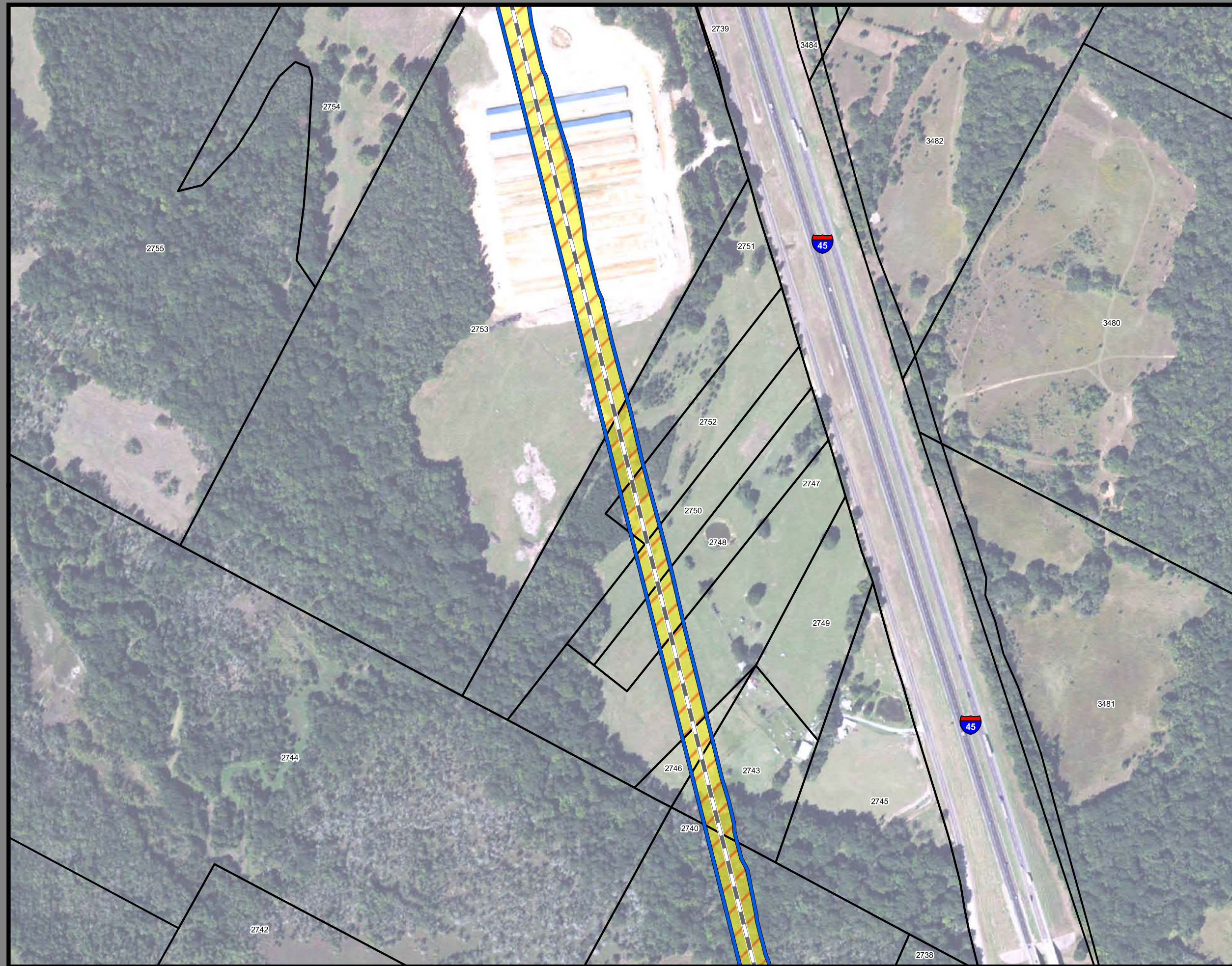
Track Configuration	Limits of Disturbance by Discipline
— Viaduct	Yellow: Rail
— Embankment	Grey: Highway
— Cut	Pink: Train Maintenance Facility
Limits of Disturbance by Segment	Brown: Maintenance of Way Facility
Green: Segment 1	Cyan: Systems*
Pink: Segment 2A	Orange: Utilities
Yellow: Segment 2B	Blue: Hydro/Drainage
Cyan: Segment 3A	Green: Station
Orange: Segment 3B	Purple: Structures
Blue: Segment 3C	Light Pink: Temporary Construction
Purple: Segment 4	
Light Green: Segment 5	
Limits of Disturbance by Impact Type	
Red/White Hatched: Permanent	
Green/White Hatched: Temporary	
— Railroad	
— Property Boundary	
— County Boundary	

Property ID -This is a unique identifier that corresponds with the Property identification number.

*Systems data includes associated systems and facilities for the HSR, such as ATP, communication systems, SP, SSP and TPSS.

Data Sources: Parcel Data - Contract Land Staff - April 26, 2017
Aerial Imagery: USDA NAIP 2014





**Dallas to Houston
High-Speed Rail Project
Project Footprint
Segment 3C
Sheet 238 of 536**

Legend

Track Configuration	Limits of Disturbance by Discipline
— Viaduct	Yellow Rail
— Embankment	Grey Highway
— Cut	Pink Train Maintenance Facility
Limits of Disturbance by Segment	Brown Maintenance of Way Facility
Green Segment 1	Cyan Systems*
Pink Segment 2A	Orange Utilities
Yellow Segment 2B	Blue Hydro/Drainage
Cyan Segment 3A	Green Station
Orange Segment 3B	Purple Structures
Blue Segment 3C	Light Pink Temporary Construction
Purple Segment 4	
Light Green Segment 5	
Limits of Disturbance by Impact Type	
Red/White Diagonal Permanent	
Green/White Diagonal Temporary	
Black Railroad	
Black Property Boundary	
Grey County Boundary	

Property ID -This is a unique identifier that corresponds with the Property identification number.

*Systems data includes associated systems and facilities for the HSR, such as ATP, communication systems, SP, SSP and TPSS.

Data Sources: Parcel Data - Contract Land Staff - April 26, 2017
Aerial Imagery: USDA NAIP 2014

