

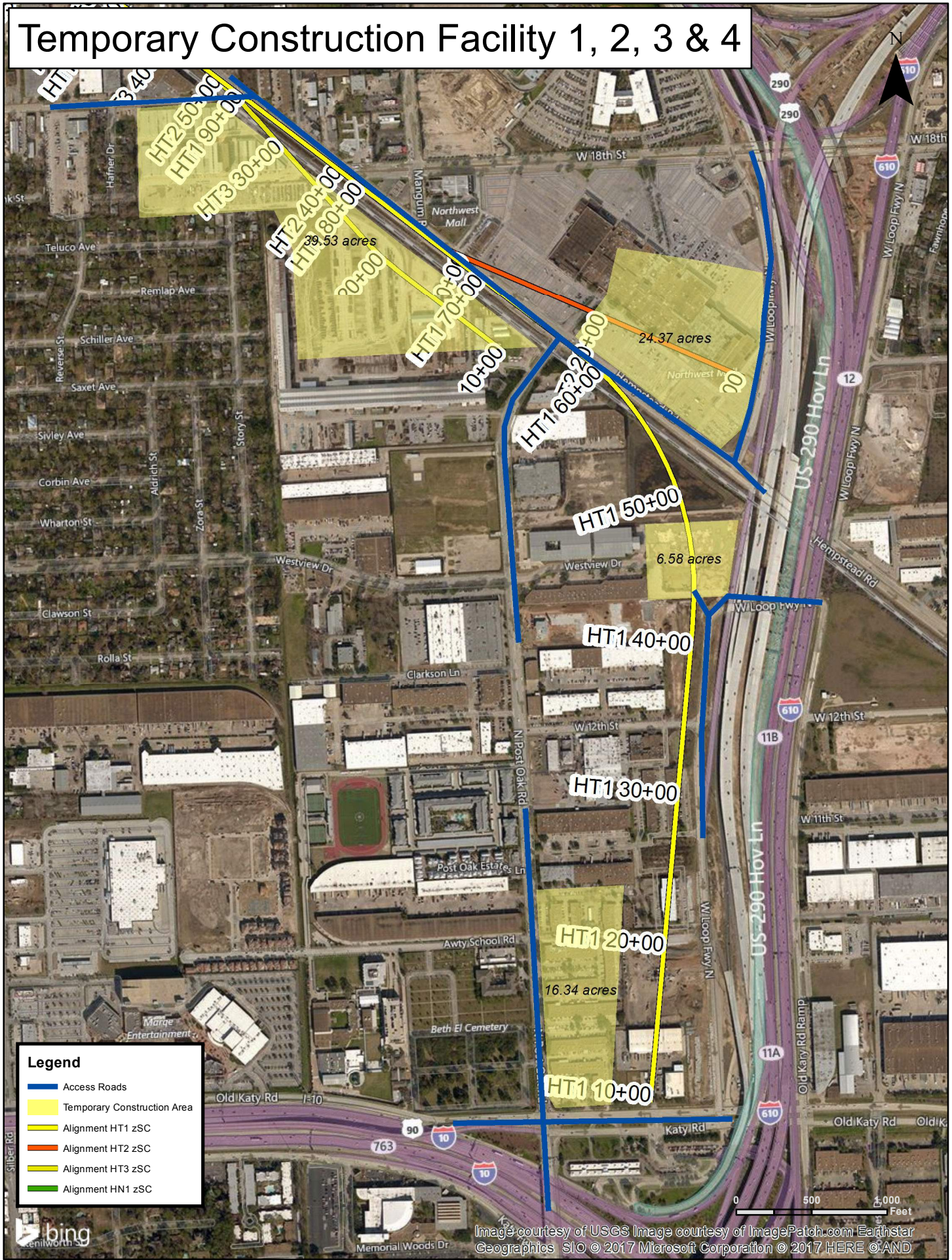
A6 Construction Equipment Quantities

		End to End Alignment A			End to End Alignment B			End to End Alignment C			End to End Alignment D			End to End Alignment E			End to End Alignment F		
Total Length (miles)					236.3									236.6					
PRODUCTION EQUIPMENT		Months			Concurrent Months			Months			Concurrent Months			Months			Concurrent Months		
Backhoe/Loaders	Cat 416 Comb BH/LDR 240	96	2	23	96	2	23	98	2	23	96	2	23	96	2	23	98	2	23
	Cat 436 Comb BH/LDR 1,296	826	17		827	17		842	18		823	17		824	17		840	17	
	Cat 446 Comb BH/LDR 60	178	4		178	4		181	4		177	4		177	4		181	4	
DOZERS	Cat D3 1,080	739	15	22	740	15	22	754	16	23	737	15	22	738	15	22	752	16	23
	Cat D6N 432	326	7		327	7		333	7		326	7		326	7		332	7	
Demo / Drills	Hyd Hammer 5000 ft-lb 120	178	4	4	178	4	4	181	4	4	177	4	4	177	4	4	181	4	4
	Hyd Hammer 7500 ft-lb 72	14	0		14	0		15	0		14	0		14	0		15	0	
EXCAVATORS	Cat 320BL Backhoe 1,584	1,176	25	59	1,178	25	59	1,199	25	60	1,173	24	59	1,174	24	59	1,196	25	60
	Cat 325BL Backhoe 360	372	8		373	8		379	8		371	8		371	8		378	8	
	Cat 330BL Backhoe 1,728	1,248	26		1,250	26		1,272	27		1,245	26		1,246	26		1,269	26	
	Cat 345BL Backhoe 36	18	0		18	0		18	0		18	0		18	0		18	0	
	Cat 365BL Backhoe 36	18	0		18	0		18	0		18	0		18	0		18	0	
GRADERS	Cat 140G Grader 1,728	576	12	17	577	12	17	587	12	18	574	12	17	575	12	17	586	12	18
Hoisting/Lifting Equip; Rough Terrain Cranes	60Ton R/T Crane 1,728	192	4		192	4		196	4		191	4		192	4		195	4	
	80Ton RT Crane 432	62	1		62	1		64	1		62	1		62	1		63	1	
Hoisting/Lifting Equip; Crawler Cranes	110 Ton Crawler Crane 360	55	1	9	55	1	9	56	1	9	55	1	9	55	1	9	56	1	9
	150 Ton Crawler Crane 1,440	163	3		163	3		166	3		163	3		163	3		166	3	
	200-Ton LS248 / 14000 Crawler 720	91	2		91	2		93	2		91	2		91	2		93	2	
	230 Ton Crawler Crane / 888 576	58	1		58	1		59	1		57	1		58	1		59	1	
	275 Ton Crawler Crane / 999 216	22	0		22	0		22	0		22	0		22	0		22	0	
	300 Ton Crawler Crane 72	26	1		26	1		27	1		26	1		26	1		27	1	
LOADERS	VME L120B Wheel Loader 72	132	3	46	132	3	46	135	3	47	132	3	46	132	3	46	134	3	47
	VME L90C Wheel Loader 4,176	1,978	41		1,980	41		2,016	42		1,972	41		1,975	41		2,011	42	
	Bobcat 743 24	108	2		108	2		110	2		108	2		108	2		110	2	
MANLIFTS	120' Aerial Lift 1,080	254	5	39	255	5	39	259	5	40	254	5	39	254	5	39	259	5	40
	30' Aerial Lift 1,248	288	6		288	6		294	6		287	6		288	6		293	6	
	60' Aerial Lift 4,416	1,037	22		1,038	22		1,057	22		1,034	22		1,035	22		1,054	22	
	80' Aerial Lift 1,248	288	6		288	6		294	6		287	6		288	6		293	6	
Pile Hammer & Acc	D46-32: 100-125K-ft-lb PILE HMR 252	64	1	4	64	1	4	65	1	4	63	1	4	64	1	4	65	1	4
	350HP VIB HMR/EXT I416 264	65	1		65	1		66	1		65	1		65	1		66	1	
	SWINGING LEADS 252	64	1		64	1		65	1		63	1		64	1		65	1	
ROLLERS/ COMPACTORS	Cat 433 CS Roller	276	6	22	276	6	22	281	6	23	275	6	22	276	6	22	281	6	23

		End to End Alignment A			End to End Alignment B			End to End Alignment C			End to End Alignment D			End to End Alignment E			End to End Alignment F		
	Cat 563 -CS (84" Smooth Drum)	240	5		240	5		245	5		239	5		240	5		244	5	
	Cat 563 -CP (84" Padfoot)	312	7		312	7		318	7		311	6		312	6		317	7	
	PS 130Pneumatic Compactor	139	3		139	3		142	3		139	3		139	3		142	3	
	Cat RM 500 Reclaimer	108	2		108	2		110	2		108	2		108	2		110	2	
TRUCKS	Flatbed F350	1,152	24	1,296	1,154	24	1,298	1,175	24	1,322	1,149	24	1,293	1,150	24	1,295	1,171	24	1,318
	Flat Bed F700	840	18		841	18		856	18		838	17		839	17		854	18	
	Fuel Truck	2,076	43		2,079	43		2,117	44		2,070	43		2,073	43		2,111	44	
	Mechanic's Truck (small)	1,356	28		1,358	28		1,383	29		1,352	28		1,354	28		1,379	29	
	Pick-Up 1/2 Ton	28,128	586		28,166	587		28,680	597		28,051	584		28,089	585		28,602	596	
	Pick-Up 3/4 Ton	18,048	376		18,072	377		18,402	383		17,998	375		18,023	375		18,352	382	
	Semi Tractor	948	20		949	20		967	20		945	20		947	20		964	20	
	Concrete - Mixer truck	2,252	47		2,255	47		2,297	48		2,246	47		2,249	47		2,290	48	
	Heavy Truck - Excavation	2,945	61		2,949	61		3,003	63		2,937	61		2,941	61		2,995	62	
	Heavy Truck - Filling	2,847	59		2,851	59		2,903	60		2,840	59		2,843	59		2,895	60	
	Heavy Truck - Rebar	336	7		337	7		343	7		336	7		336	7		342	7	
	Heavy Truck - Structural Steel	147	3		148	3		150	3		147	3		147	3		150	3	
	Water Truck 4000 Gal	1,154	24		1,155	24		1,176	25		1,150	24		1,152	24		1,173	24	
MISC EQUIPMENT	Air Compressors	972	20	112	973	20	112	991	21	114	969	20	112	971	20	112	988	21	114
	Equipment - GPS	216	5		216	5		220	5		215	4		216	4		220	5	
	Generators	1,109	23		1,110	23		1,131	24		1,106	23		1,107	23		1,127	23	
	Grout Pump	590	12		591	12		602	13		589	12		590	12		600	13	
	Walk behind roller	547	11		548	11		558	12		546	11		546	11		556	12	
	Small Vac Sweeper	1,152	24		1,154	24		1,175	24		1,149	24		1,150	24		1,171	24	
	All Welders	576	12		577	12		587	12		574	12		575	12		586	12	
	Trench Box	168	4		168	4		171	4		168	3		168	3		171	4	
	Bidwell Deck Finishers	43	1		43	1		44	1		43	1		43	1		44	1	
	Total Months	79,390	N/A	N/A	79,498	N/A	N/A	80,948	N/A	N/A	79,172	N/A	N/A	79,279	N/A	N/A	80,729	N/A	N/A
	Concurrent Months		1,654	1,654		1,656	1,656		1,686	1,686		1,649	1,649		1,652	1,652		1,682	1,682

A7 **Construction Staging Areas Maps**

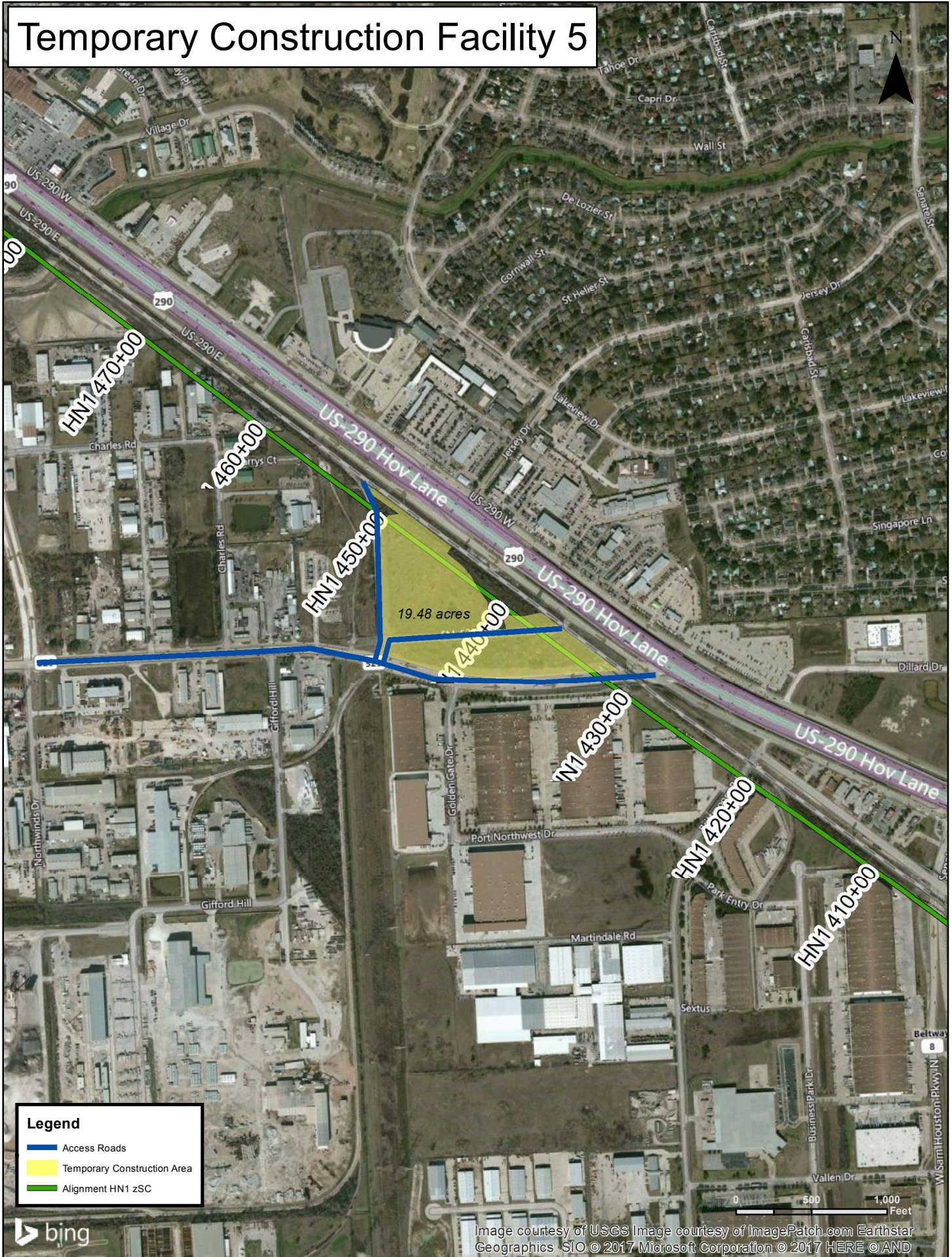
Temporary Construction Facility 1, 2, 3 & 4



Legend	
	Access Roads
	Temporary Construction Area
	Alignment HT1 zSC
	Alignment HT2 zSC
	Alignment HT3 zSC
	Alignment HN1 zSC

Image courtesy of USGS Image courtesy of ImagePatch.com Earthstar Geographics SIO © 2017 Microsoft Corporation © 2017 HERE © AND

Temporary Construction Facility 5



Temporary Construction Facility 6



Legend

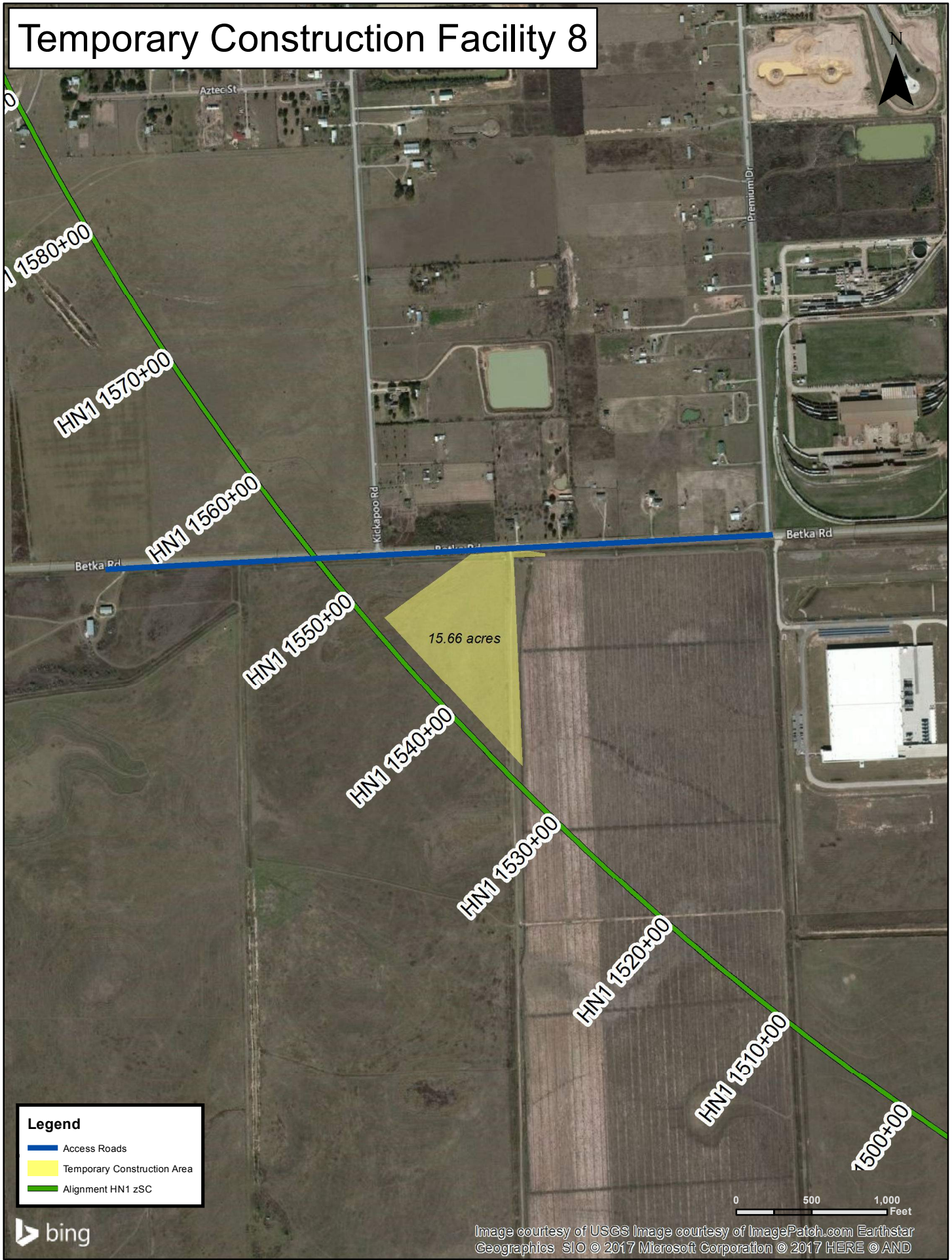
- Access Roads
- Temporary Construction Area
- Alignment HN1 zSC



Temporary Construction Facility 7



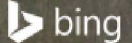
Temporary Construction Facility 8



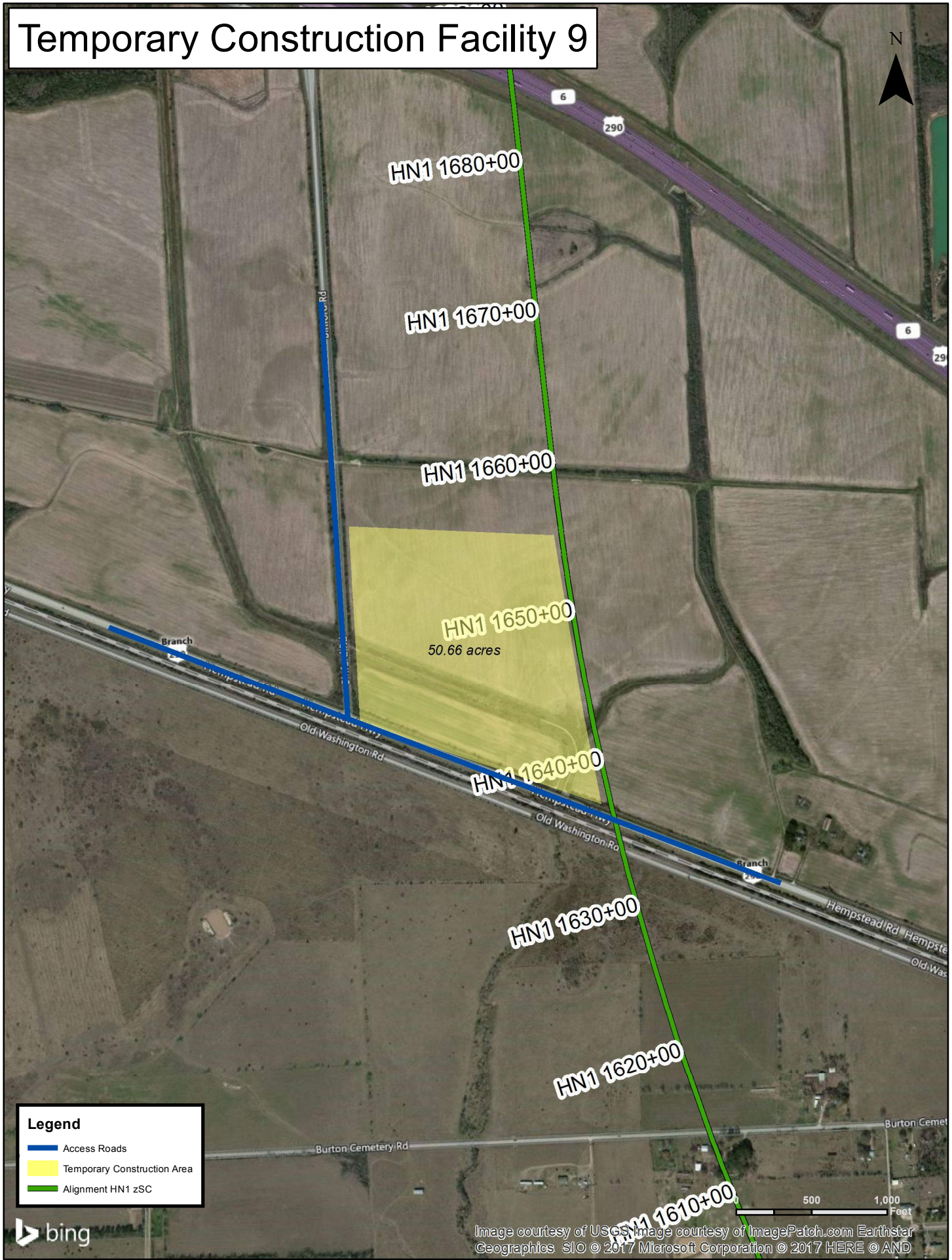
Legend

- Access Roads
- Temporary Construction Area
- Alignment HN1 zSC

0 500 1,000 Feet



Temporary Construction Facility 9



Legend

- Access Roads
- Temporary Construction Area
- Alignment HN1 zSC

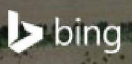
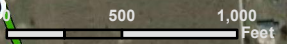
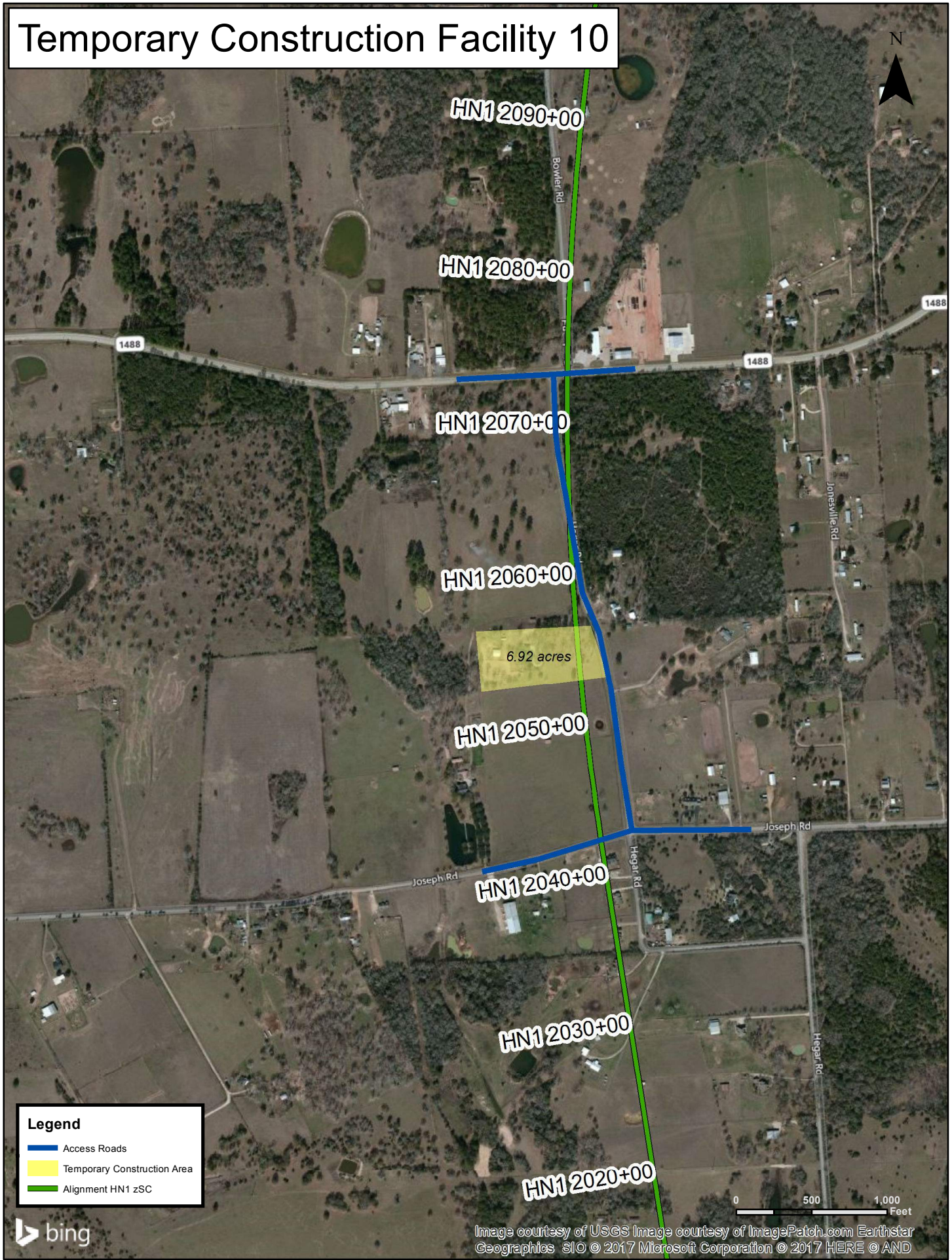




Image courtesy of USGS, Image courtesy of ImagePatch.com Earthstar Geographics SIO © 2017 Microsoft Corporation © 2017 HERE © AND



Temporary Construction Facility 10



Legend

-  Access Roads
-  Temporary Construction Area
-  Alignment HN1 zSC

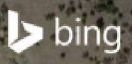
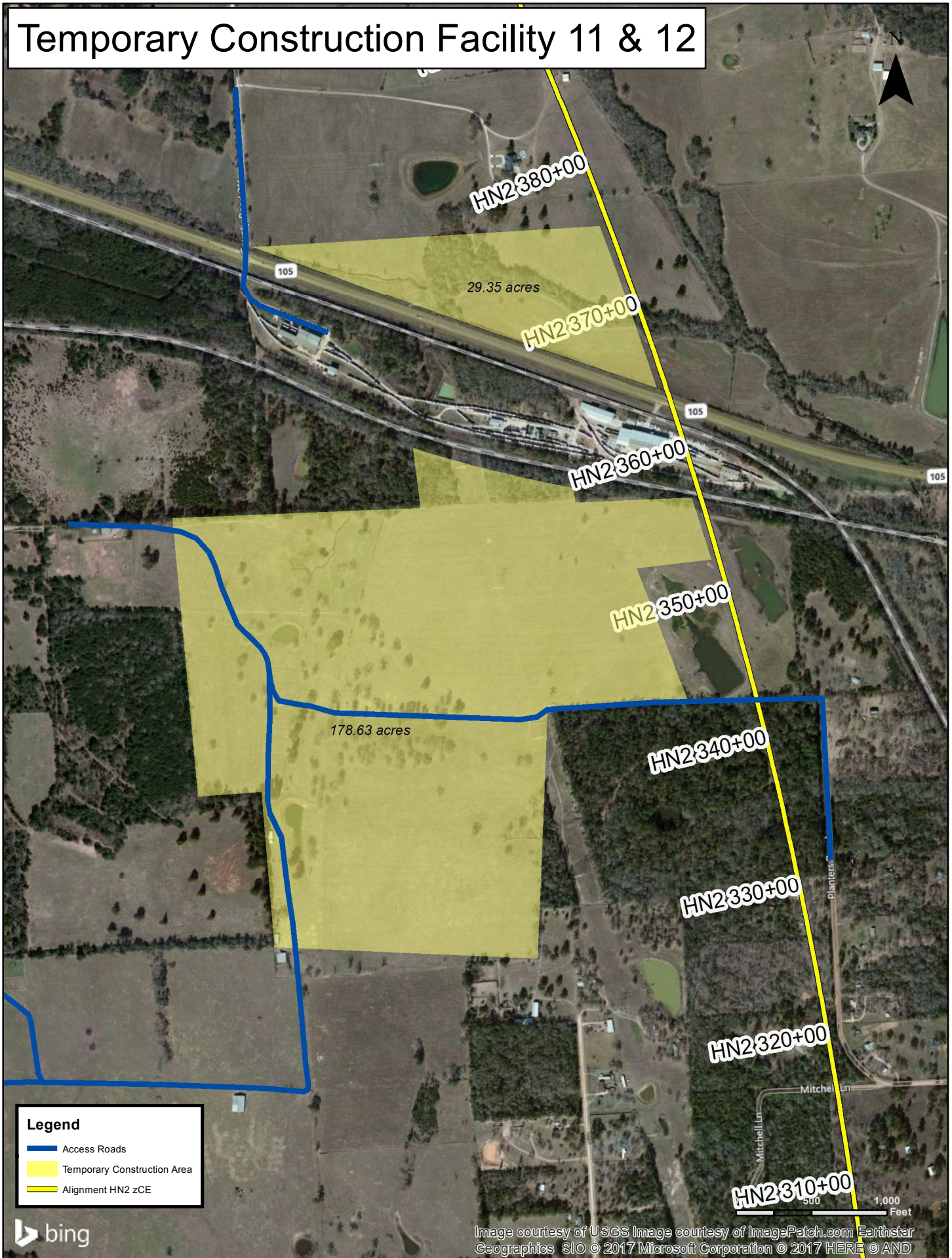
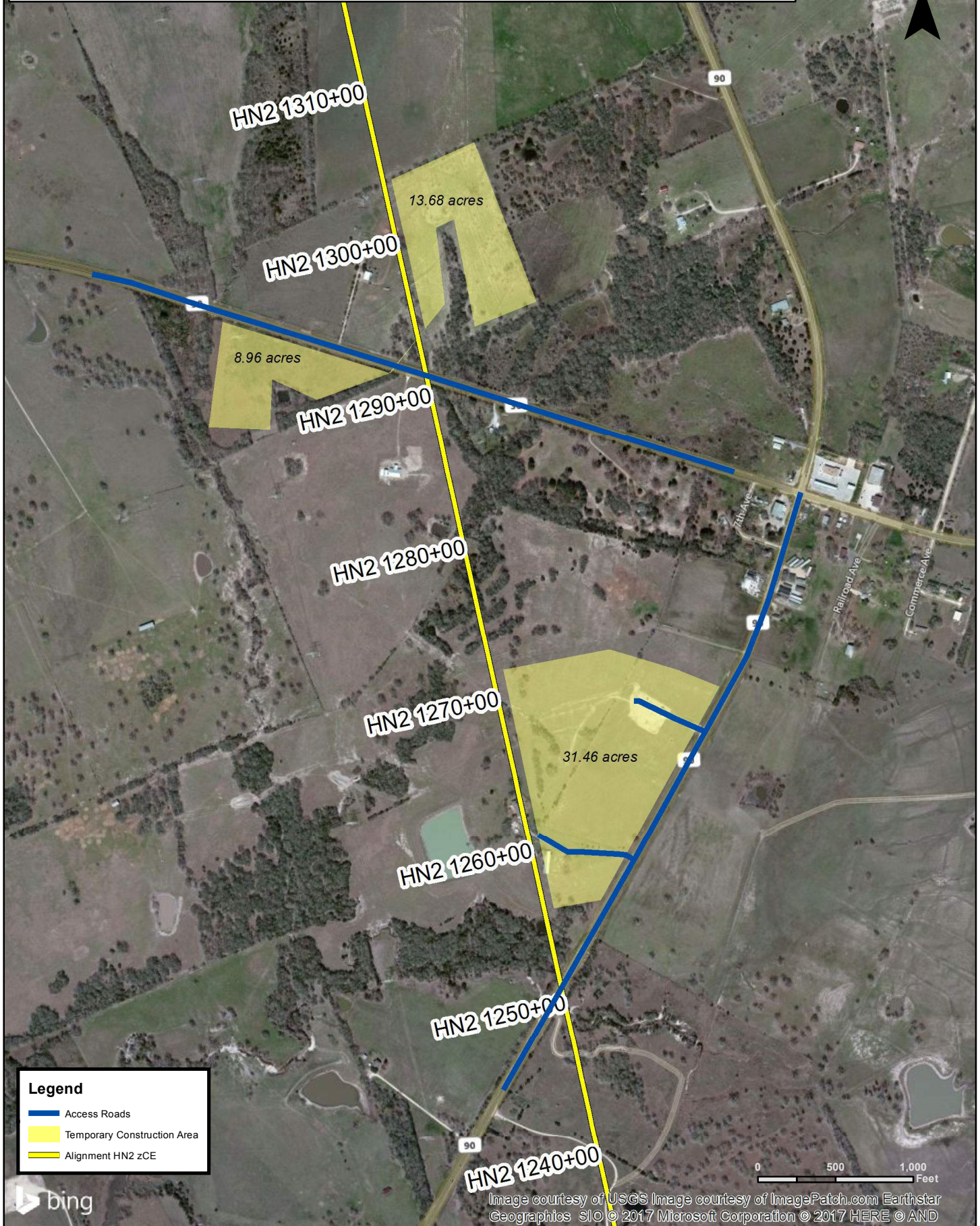


Image courtesy of USGS Image courtesy of ImagePatch.com Earthstar Geographics SIO © 2017 Microsoft Corporation © 2017 HERE © AND

Temporary Construction Facility 11 & 12



Temporary Construction Facility 13, 14 & 15



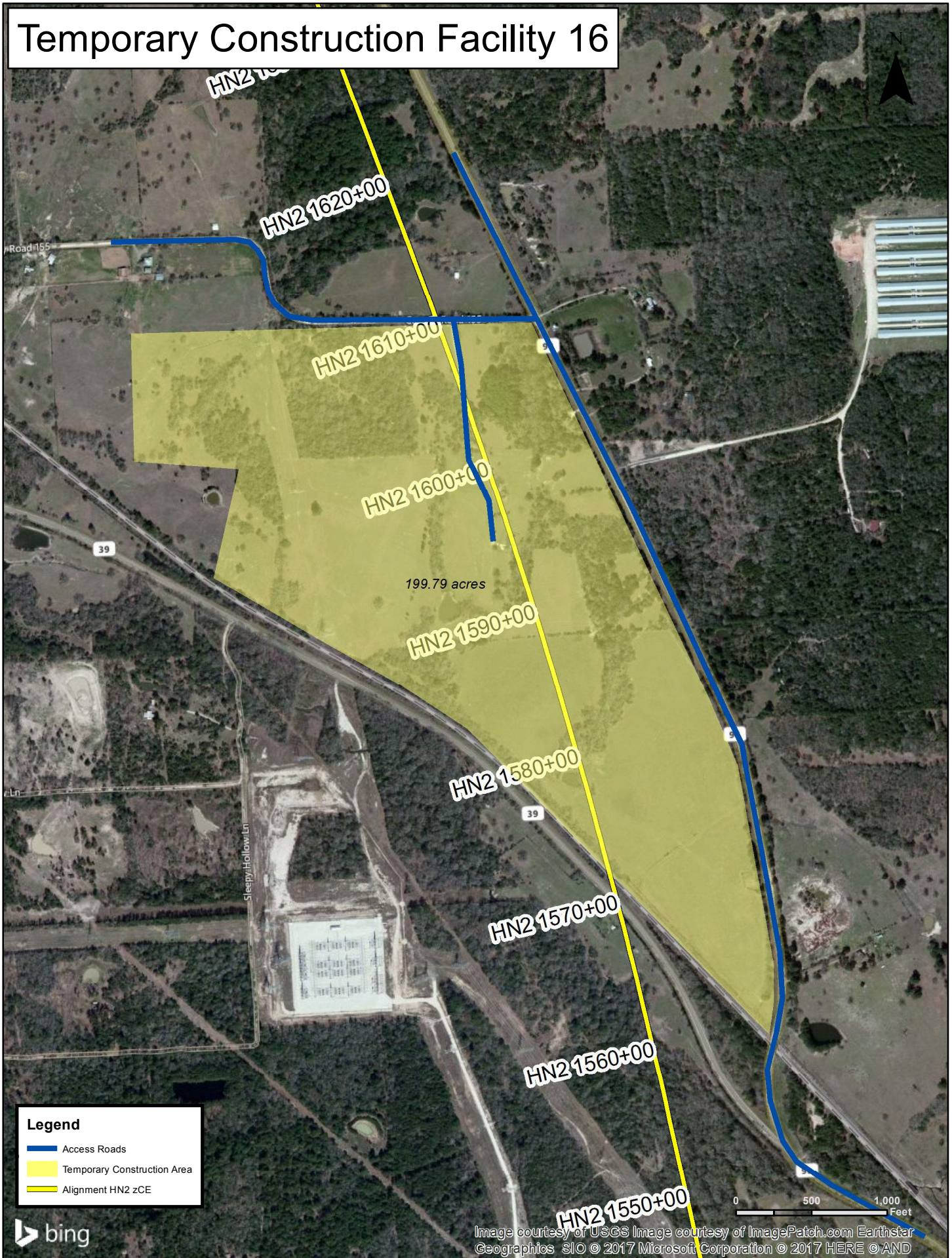
Legend

- Access Roads
- Temporary Construction Area
- Alignment HN2 zCE

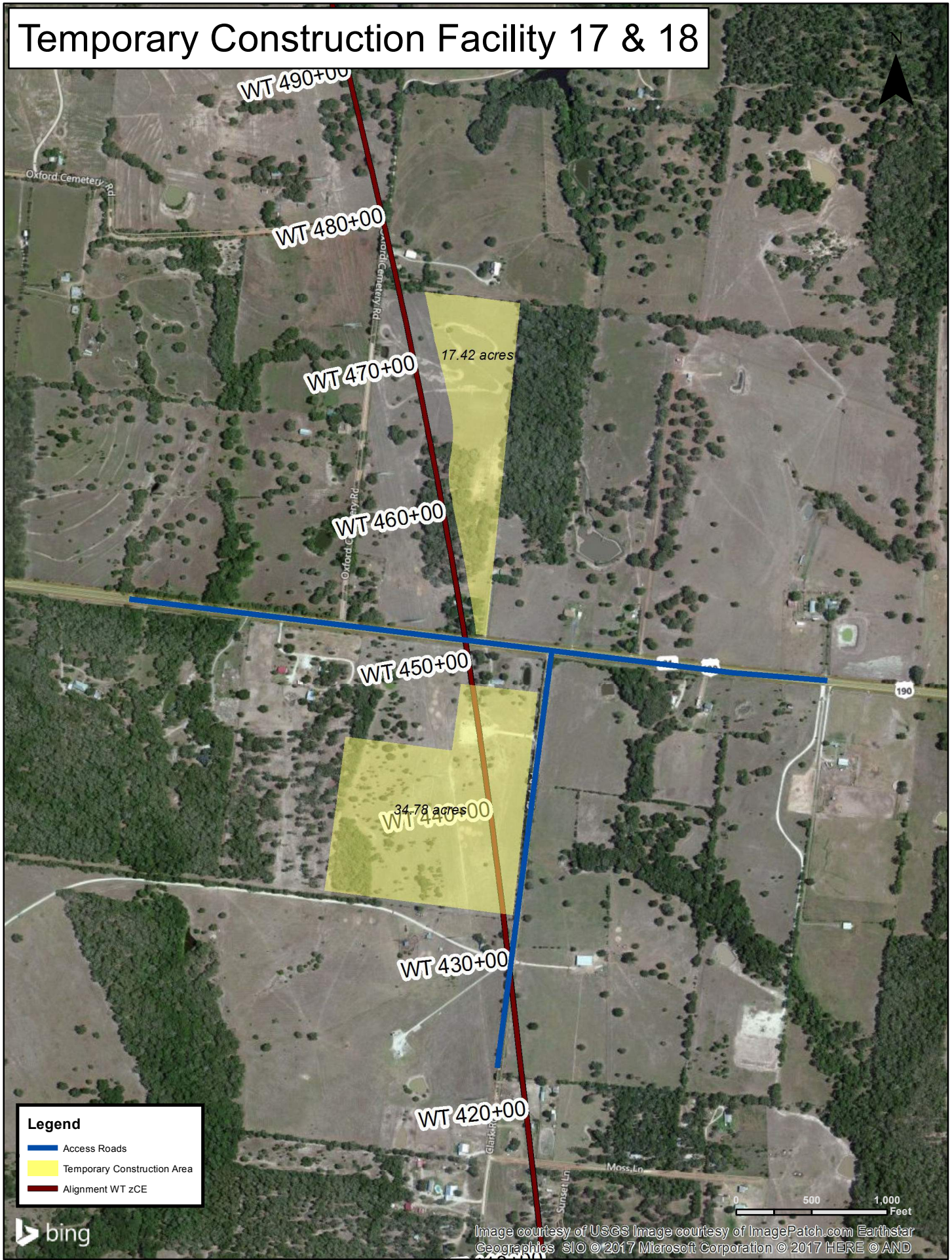
0 500 1,000 Feet

Image courtesy of USGS Image courtesy of ImagePatch.com Earthstar Geographics SIO © 2017 Microsoft Corporation © 2017 HERE © AND

Temporary Construction Facility 16



Temporary Construction Facility 17 & 18



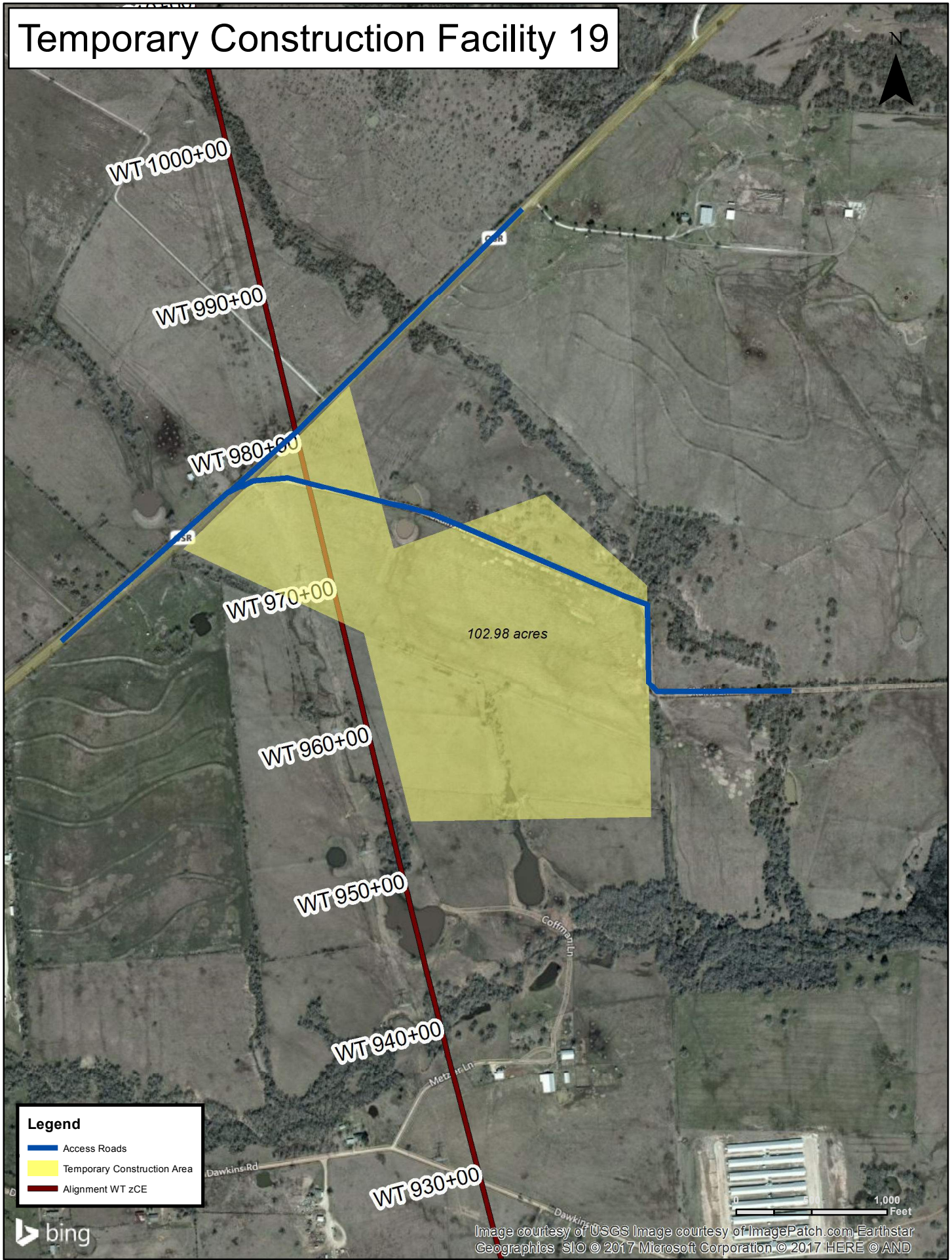
Legend

- Access Roads
- Temporary Construction Area
- Alignment WT zCE



Image courtesy of USGS Image courtesy of ImagePatch.com Earthstar Geographics SIO © 2017 Microsoft Corporation © 2017 HERE © AND

Temporary Construction Facility 19



Legend

- Access Roads
- Temporary Construction Area
- Alignment WT zCE

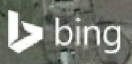
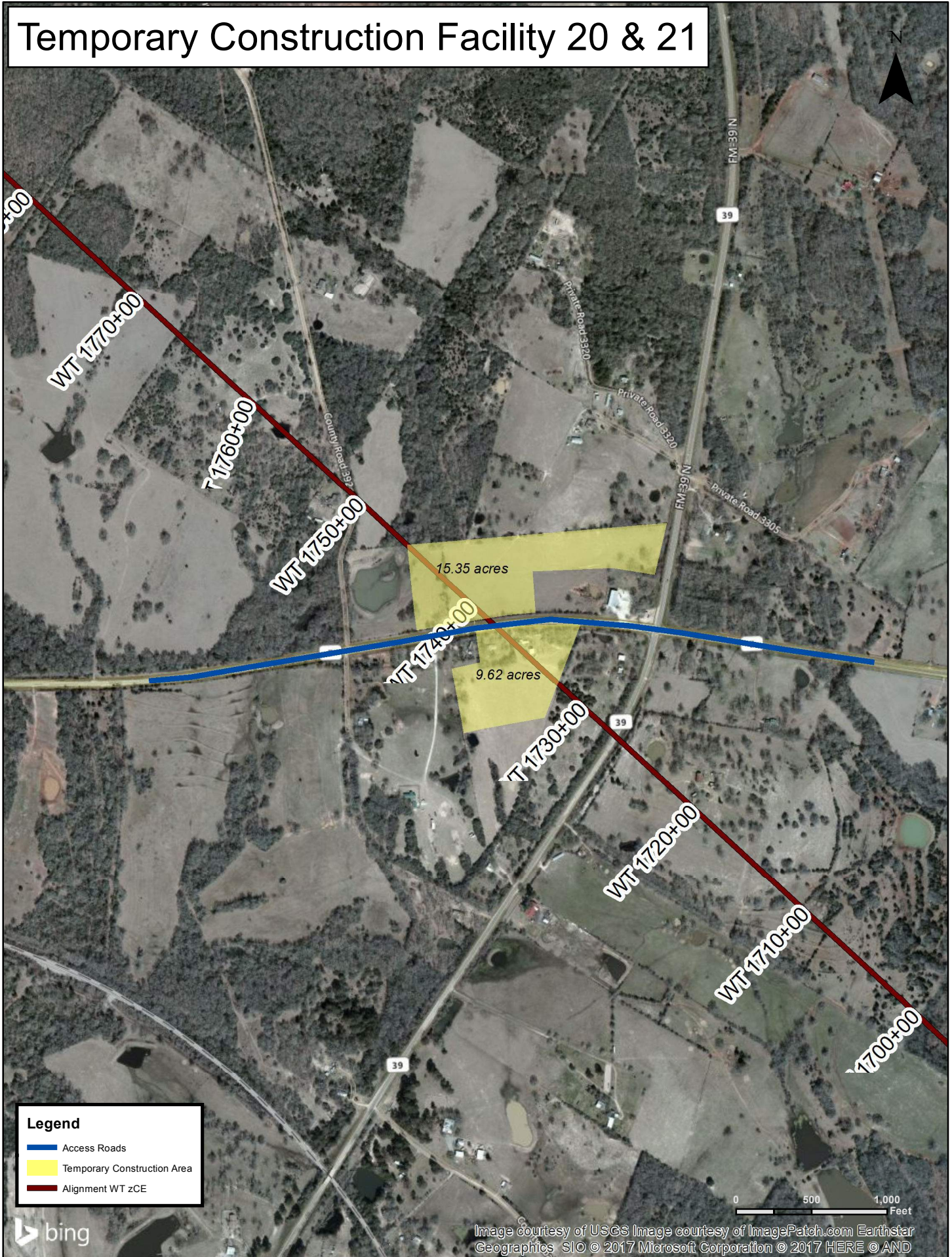
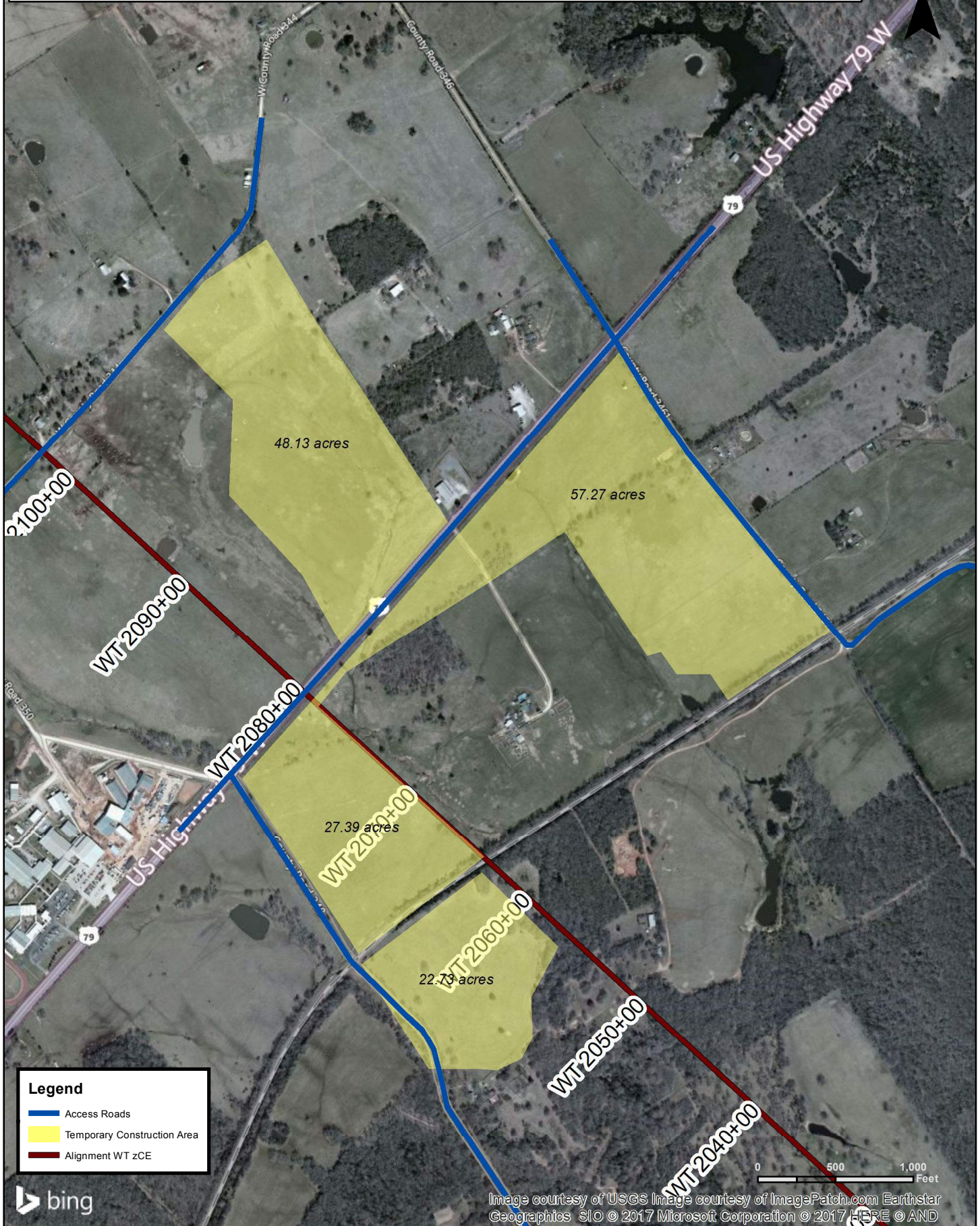


Image courtesy of USGS Image courtesy of ImagePatch.com Earthstar Geographics SIO © 2017 Microsoft Corporation © 2017 HERE © AND

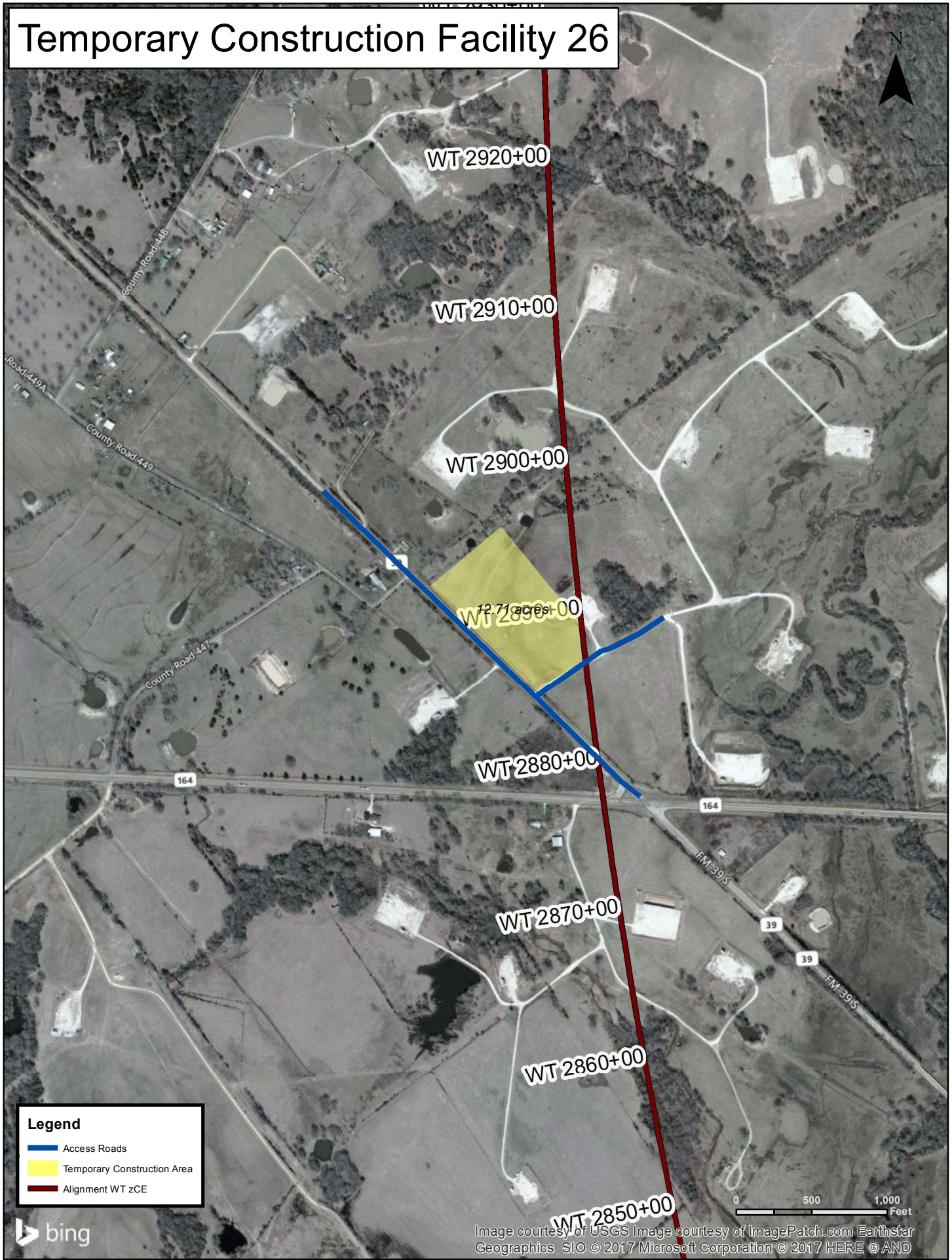
Temporary Construction Facility 20 & 21



Temporary Construction Facility 22, 23, 24 & 25



Temporary Construction Facility 26



Legend

- Access Roads
- Temporary Construction Area
- Alignment WT zCE



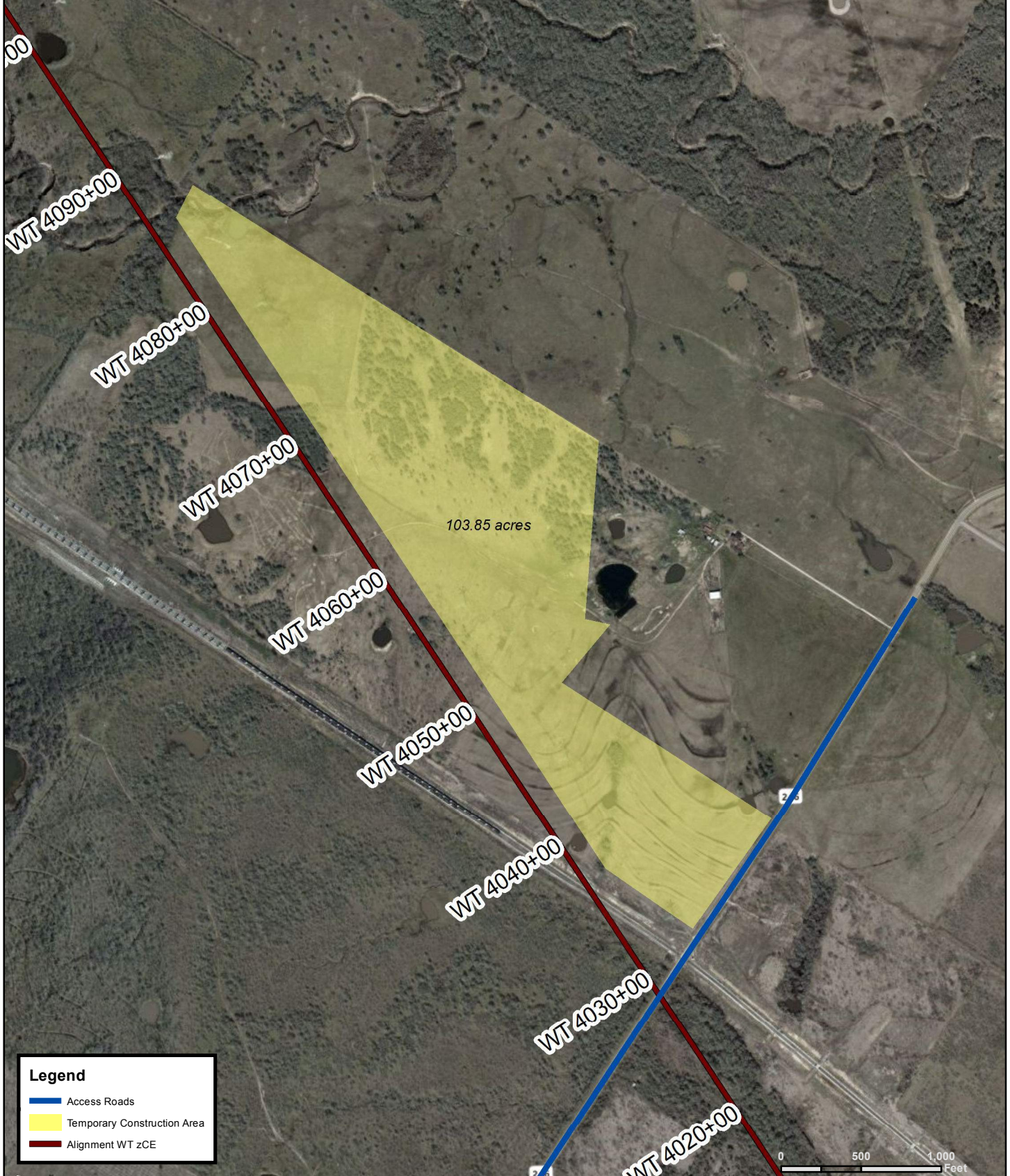
Temporary Construction Facility 27






Legend

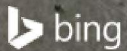
- Access Roads
- Temporary Construction Area
- Alignment WT zCE

Temporary Construction Facility 28

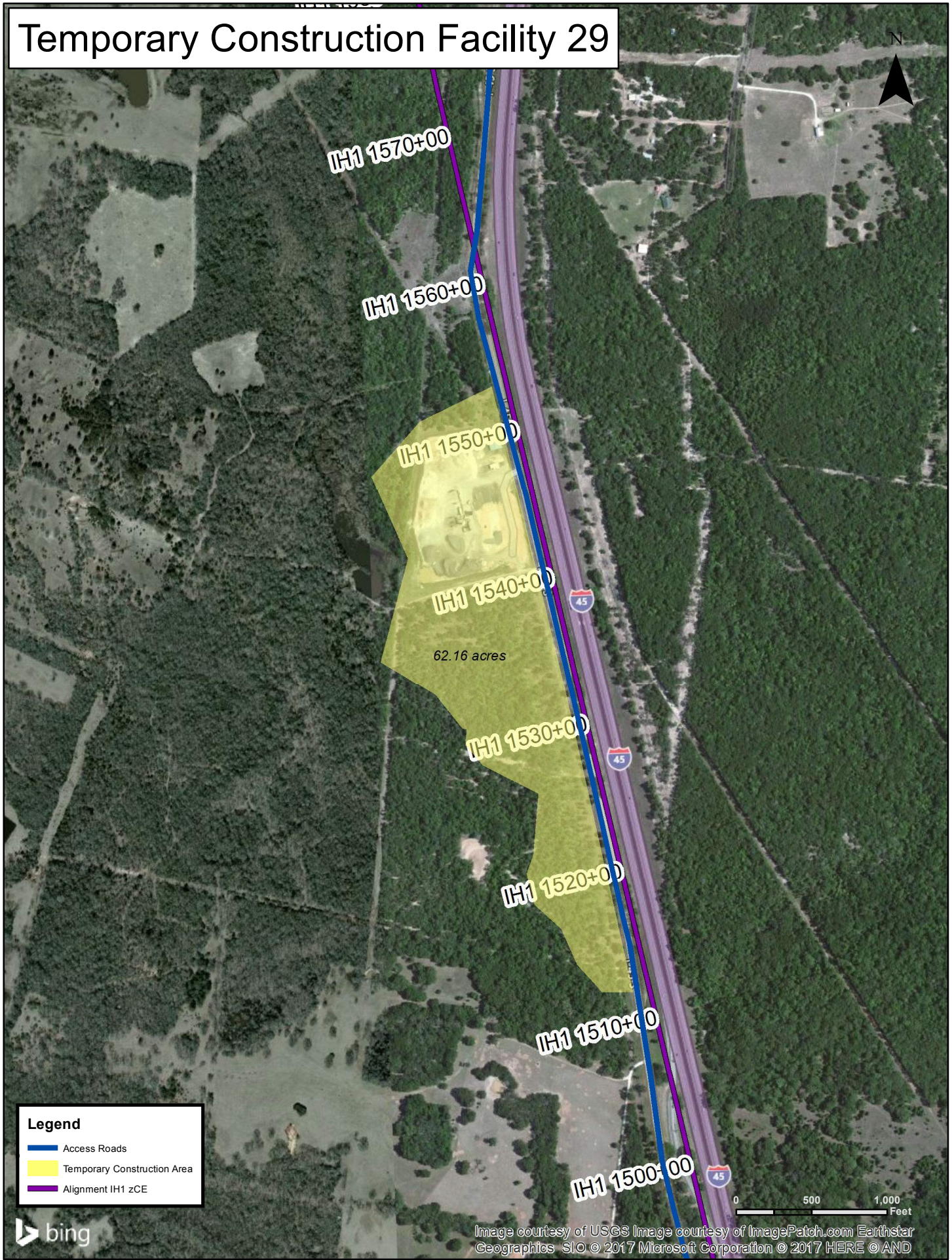


Legend

-  Access Roads
-  Temporary Construction Area
-  Alignment WT zCE



Temporary Construction Facility 29



62.16 acres

Legend

- Access Roads
- Temporary Construction Area
- Alignment IH1 zCE

