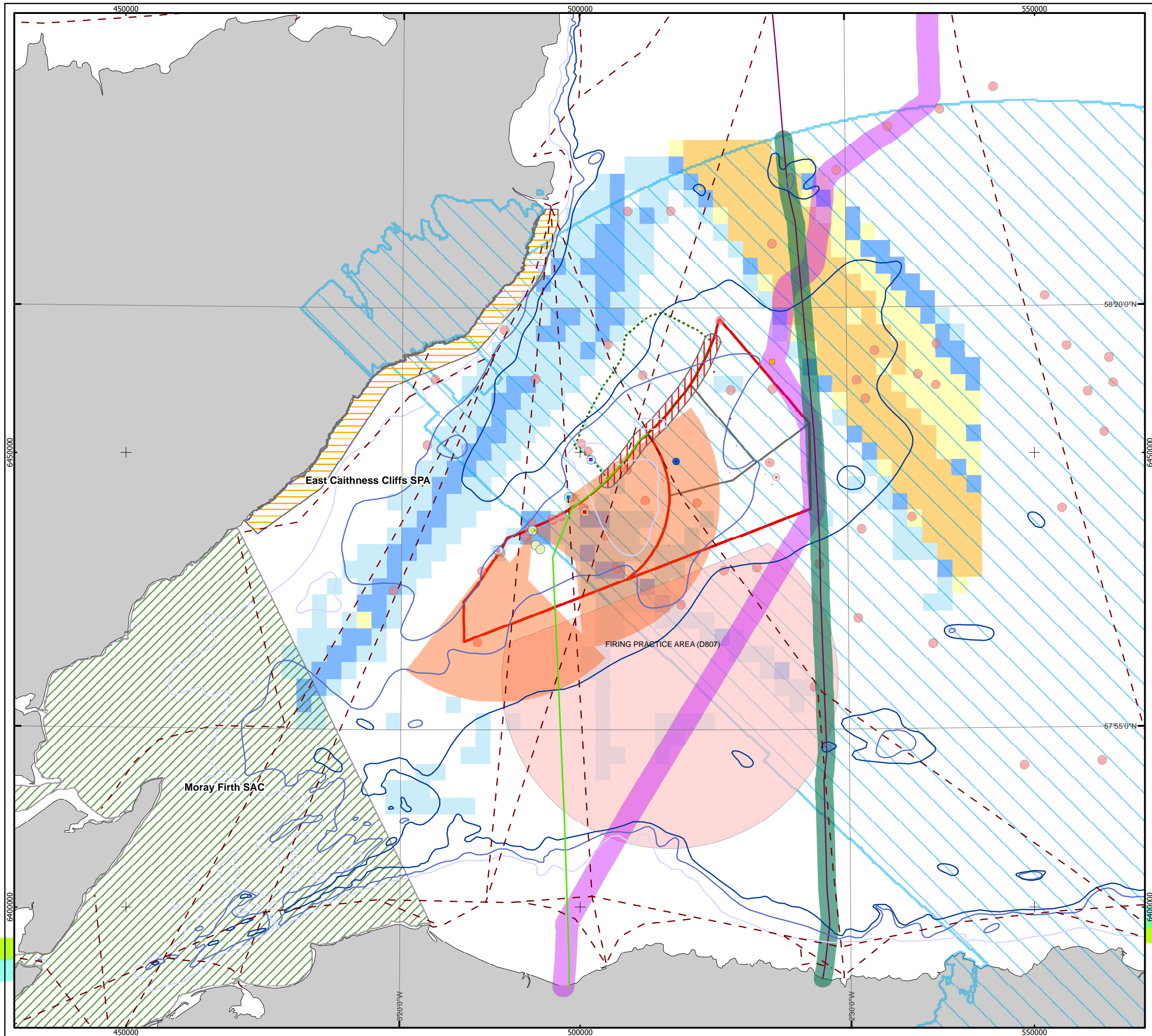


©British Crown Copyright, 2005. All Rights Reserved. SeaZone Solutions Limited, 2005 012009.001
Moray Offshore Renewables Ltd © 2011. This document is the property of contractors and sub-contractors and shall not be reproduced nor transmitted without prior written approval.



Moray Offshore Renewables Ltd

KEY

- MORL Zone Boundary
 - Windfarm Boundaries
 - MORL Wave Buoy
 - MORL Offshore Met Mast
 - Proposed Hub Location
 - Jacky Platform
 - Proposed Polly Platform Development
 - Beatrice AD platform
 - Beatrice AP platform
 - Beatrice B platform
 - Beatrice C platform
 - BOWL Proposed Cable Route
 - RYA Sailing and Cruising Routes
 - SHEFA-2 Telecommunications Cable
 - BOWL - MORL Boundary Buffer
5 x max hub height (5 x 171m = 855m) on both sides of boundary
 - O&G Platform Helicopter Approaches (9nm buffer)
 - SHEFA-2 1000m Buffer
 - Oil Platforms 500m Buffer
 - Beatrice Demonstrator 500m Buffer
 - Archaeological Targets (50m and 100m Buffers)
 - O&G Wellheads 500m Buffer
 - Special Area of Conservation
 - Special Protected Area
 - SHEL Re-route for MORL 1200m Buffer
 - D807 MOD Designation
 - Beatrice Offshore Wind Farm
 - Primary Surveillance Radar (PSR) at 140m line-of-sight
- Water Depth (LAT,m)**
- 60
 - 50
 - 40
- Shipping Density Rank (Anatec)**
- 1
 - 2
 - 3
 - 4
 - 5

Horizontal Scale: 1:400,000 A3 Chart
0 10,000 20,000 Meters

Geodetic Parameters: WGS84 UTM Zone 30N

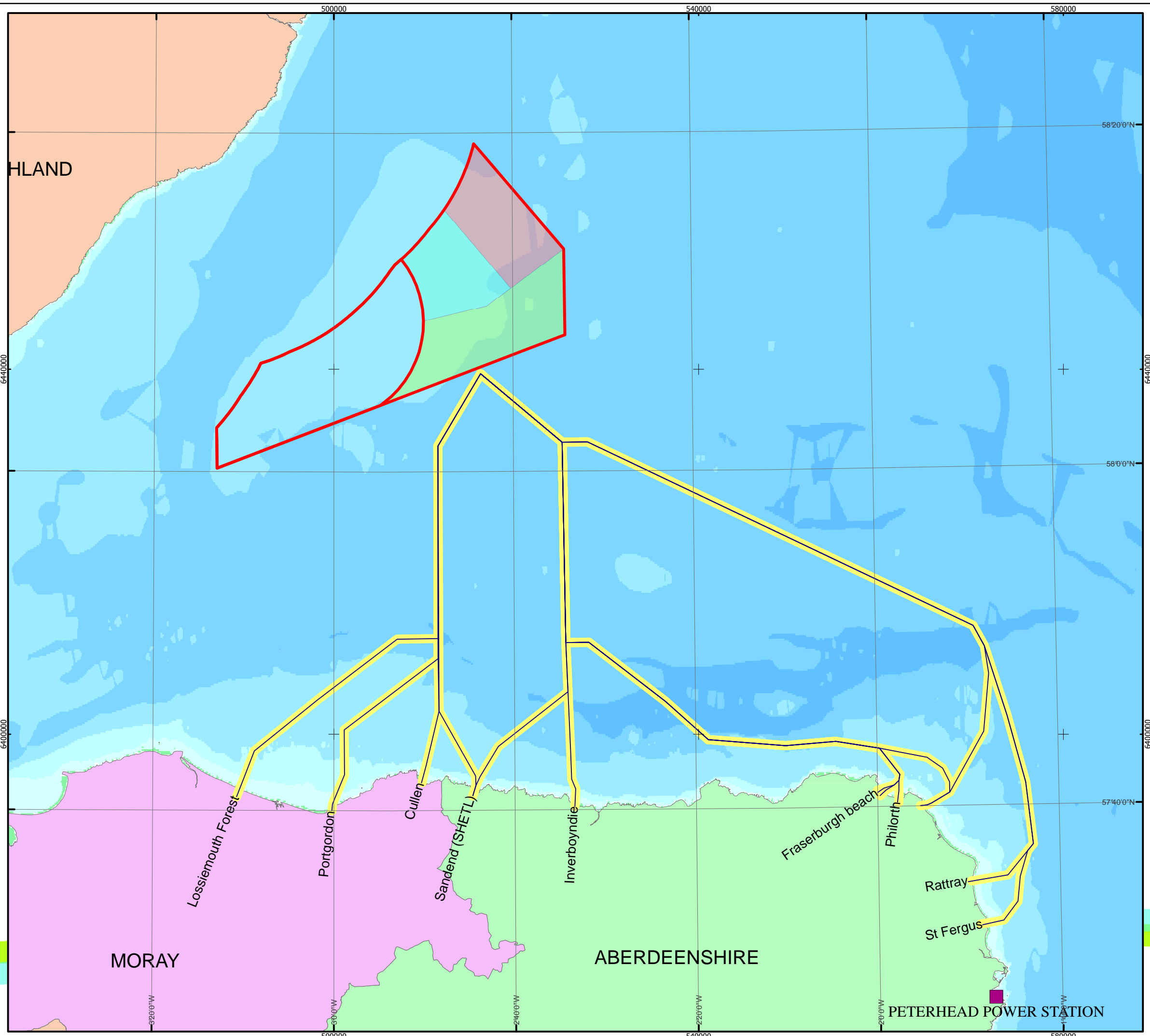
Produced: PH
Reviewed: CR
Approved: PL

Date: 17/02/2012 Revision: B
REF: 8460001-PPW0201-MOR-MAP-008

Fig 2.1-1 MORL Spatial Constraints

Moray Offshore Renewables Ltd

Contains Ordnance Survey data © Crown Copyright & database right 2011.
 © SeaZone Solutions Limited, 2005, [012009.001, 022011.009]. This product includes mapping data licensed from Ordnance Survey (Great Britain) with the permission of HMSO. © Crown Copyright, 2006. All rights reserved.
 Moray Offshore Renewables Ltd © 2011. This document is the property of contractors and sub-contractors and shall not be reproduced nor transmitted without prior written approval.



Moray Offshore Renewables Ltd

- KEY**
- National Grid Connection
 - METOC-Hyder Offshore Cable Route Initial Options
 - METOC-Hyder Offshore Cable Route Corridor
 - MORL Zone Boundary
 - MacColl Windfarm
 - Stevenson Windfarm
 - Telford Windfarm

Horizontal Scale: 1:400,000 A3 Chart

Geodetic Parameters: WGS84 UTM Zone 30N

Produced: PH
 Reviewed: RH
 Approved: RH

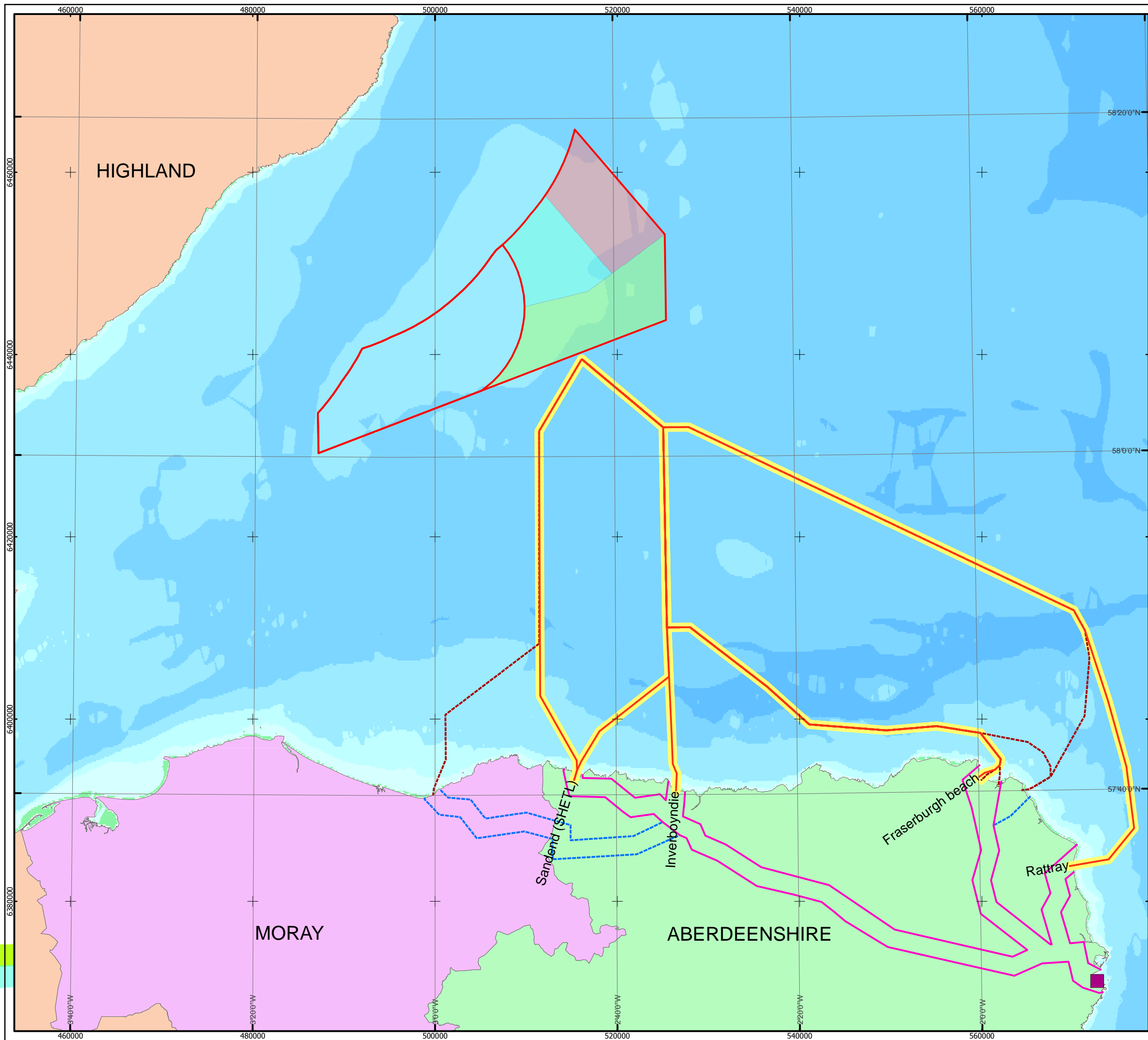
Date: 16/12/2011 Revision: A

REF: 8460001-PPW0201-MOR-MAP-009

Fig 2.1-2 Offshore Export Cable Options Metoc-Hyder

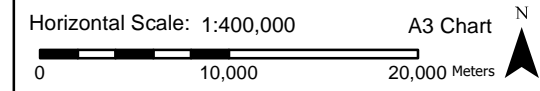
Moray Offshore Renewables Ltd

Contains Ordnance Survey data © Crown Copyright & database right 2011.
 © SeaZone Solutions Limited, 2005, [012009,001, 022011, 009]. This product includes mapping data licensed from Ordnance Survey (Great Britain) with the permission of HMSO. © Crown Copyright, 2006. All rights reserved.
 Moray Offshore Renewables Ltd © 2011. This document is the property of contractors and sub-contractors and shall not be reproduced nor transmitted without prior written approval.



Moray Offshore Renewables Ltd

- KEY**
- National Grid Connection
 - Onshore Cable Route - Route connections taken to 2nd Stage of Selection
 - Onshore Cable Route - JP Kenny Preferred Routes
 - Offshore Cable Route - Landfall Points taken to 2nd Stage of Selection
 - Offshore Cable Route - JP Kenny Preferred Landfall Points
 - JP Kenny Preferred Offshore Cable Routes
 - MORL Zone Boundary
 - MacColl Windfarm
 - Stevenson Windfarm
 - Telford Windfarm



Geodetic Parameters: WGS84 UTM Zone 30N

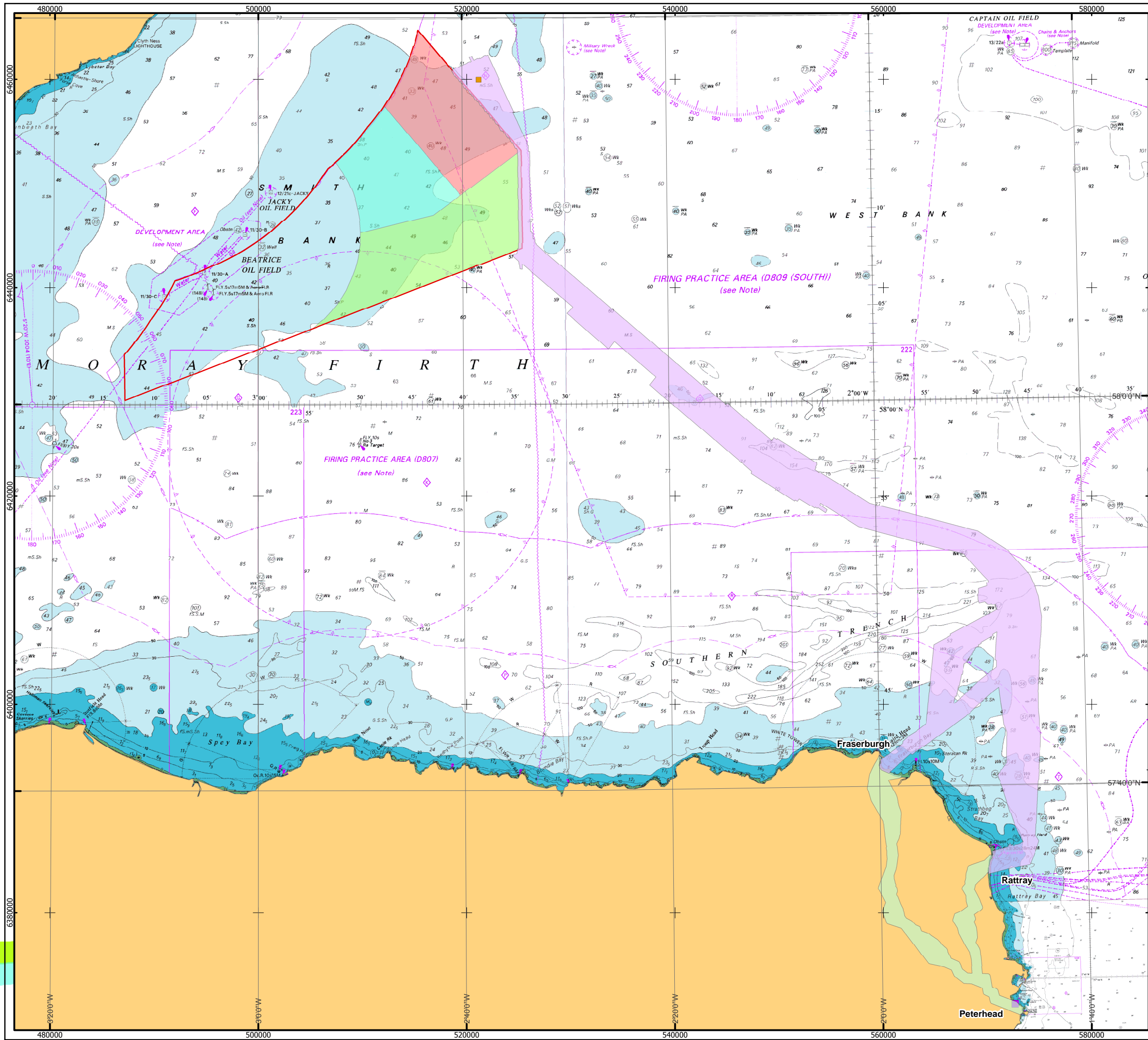
Produced: PH
 Reviewed: CR
 Approved: CR

Date: 19/05/2012 Revision: B
 REF: 8460001-PPW0201-MOR-MAP-010

Fig 2.1-3 Onshore & Offshore Cable Routes - Stage 1
Concept Engineering Study

Moray Offshore Renewables Ltd

©British Crown Copyright, 2005. All Rights Reserved. SeaZone Solutions Limited, 2005 012009.001
 Moray Offshore Renewables Ltd © 2011. This document is the property of contractors and sub-contractors and shall not be reproduced nor transmitted without prior written approval.



Moray Offshore Renewables Ltd

KEY

- Proposed Hub Location
- Offshore Export Cable Route Options
- Onshore Export Cable Route Options
- MORL Zone Boundary
- MacColl Windfarm
- Stevenson Windfarm
- Telford Windfarm
- Peterhead Grid Connection

Horizontal Scale: 1:350,000 A3 Chart
N

Geodetic Parameters: WGS84 UTM Zone 30N

Produced: PH
 Reviewed: CR
 Approved: TL

Date: 02/03/2012 Revision: B
 REF: 8460001-PPW0201-MOR-MAP-011

Fig 2.1-4 Hub & Export Cable Route Options (Fraserburgh & Rattray)

Moray Offshore Renewables Ltd