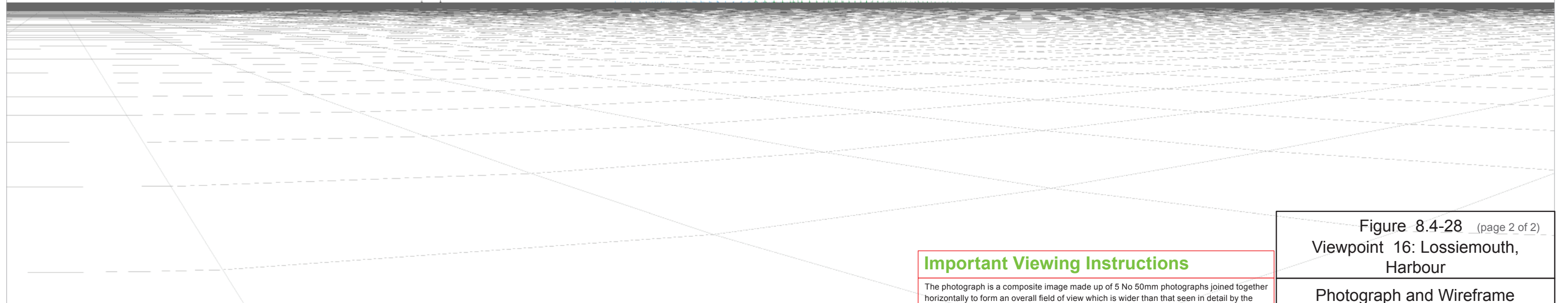




Existing view from Lossiemouth Harbour Distance to nearest turbine: 45.81 km (MacColl) Camera: Canon EOS 5D Mark II Focal Length: 50mm Horizontal Field of View: 72 degrees Camera Height: 1.5m Date: 06/09/11 Time:10:37



Computer generated wireframe showing no visibility

Reproduced from Ordnance Survey Landform Profile digital terrain height data © Crown Copyright 2012. All rights reserved. Licence Number 0100034870

Important Viewing Instructions

The photograph is a composite image made up of 5 No 50mm photographs joined together horizontally to form an overall field of view which is wider than that seen in detail by the human eye. For correct perspective viewing, these images must be viewed at an exact distance of 314 mm with one eye whilst curving the image in and exact arc of 72 degrees. This image should only be assessed in the real landscape from the same viewpoint.

Figure 8.4-28 (page 2 of 2)
Viewpoint 16: Lossiemouth, Harbour

Photograph and Wireframe

Layout Scenario 4c

© COPYRIGHT STATEMENT: Moray Offshore Renewables Ltd © 2012. This document is the property of contractors and sub-contractors and shall not be reproduced nor transmitted without prior written approval.

Reproduced from 1:25,000 Ordnance Survey digital map data © Crown Copyright 2012. All rights reserved. Licence Number 0100031673



Viewpoint 17: Buckie, Cliff Terrace

OSGB Grid Reference: 343091 E 865825 N

Distance to nearest turbine: 44.35 km

AOD: c 25 m

View taken from Cliff Terrace adjacent to the lighthouse.



Moray Offshore Renewables Ltd

Scale in metres: 1: 20,000



Geodetic Parameters: WGS84 UTM Zone 30N

Produced: LT

Reviewed: SM

Approved: SM

Date: 09/07/2012

Revision: B

Ref: 8460001-PPW0201-OPE-MAP-076



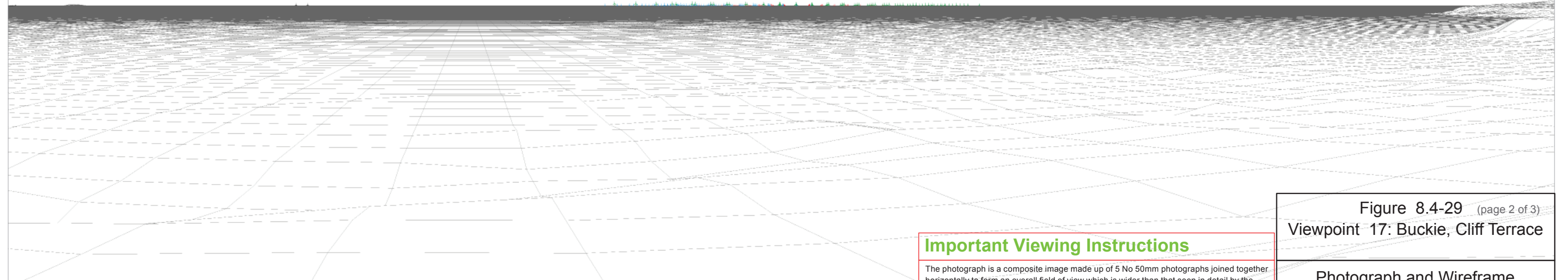
Figure 8.4-29 (page 1 of 3)
Viewpoint 17: Buckie, Cliff Terrace
Location

Moray Offshore
Renewables Ltd



Existing view from Buckie, Cliff Terrace Distance to nearest turbine: 44.35 km (MacColl) Camera: Canon EOS 5D Mark II Focal Length: 50mm Horizontal Field of View: 72 degrees Camera Height: 1.5m Date: 06/09/11 Time: 14:24

Buolfruch (74.49 km) Beatrice Demo (47.02 km)



Computer generated wireframe showing the proposed developments Telford (Red), Stevenson (Blue) and MacColl (Green) and other operational wind farm turbines in black

Important Viewing Instructions

The photograph is a composite image made up of 5 No 50mm photographs joined together horizontally to form an overall field of view which is wider than that seen in detail by the human eye. For correct perspective viewing, these images must be viewed at an exact distance of 314 mm with one eye whilst curving the image in and exact arc of 72 degrees. This image should only be assessed in the real landscape from the same viewpoint.

Figure 8.4-29 (page 2 of 3)
Viewpoint 17: Buckie, Cliff Terrace

Photograph and Wireframe
Layout Scenario 4c



Photomontage view showing the proposed development

Distance to nearest turbine: 44.35 km (MacColl)

Camera: Canon EOS 5D Mark II

Focal Length: 50mm

Horizontal Field of View: 72 degrees

Camera Height: 1.5m

Date: 06/09/11

Time: 14:24

Important Viewing Instructions

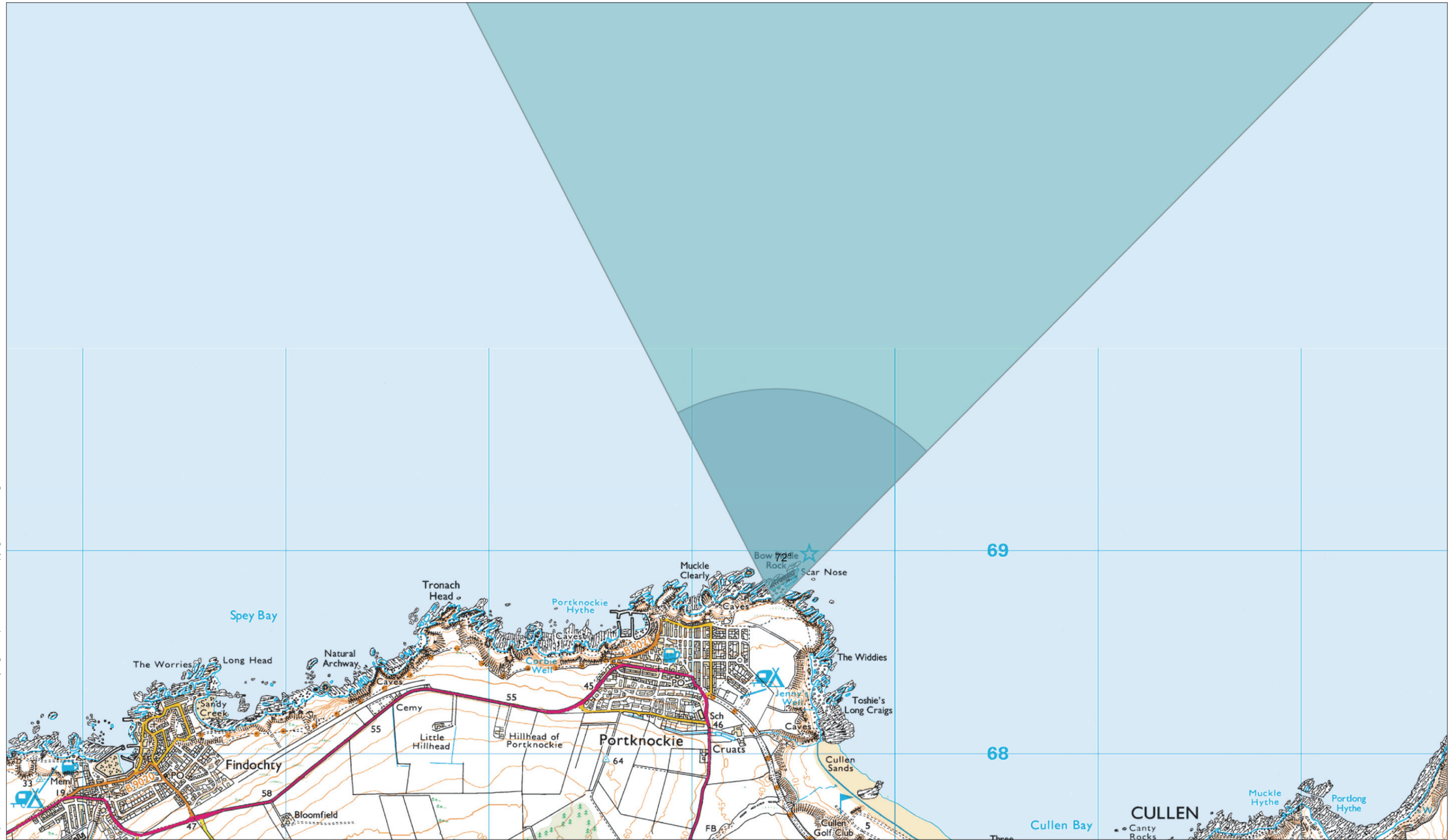
This is a composite image made up of 5 No 50mm photographs joined together horizontally to form an overall field of view which is wider than that seen in detail by the human eye. For correct perspective viewing, this photograph, photomontage and wireline must be viewed at an exact distance of 314 mm with one eye whilst curving the image in an exact arc of 72 degrees.

This image should only be assessed in the real landscape from the same viewpoint.

Figure 8.4-29 (page 3 of 3)
Viewpoint 17: Buckie, Cliff Terrace

Photomontage

Layout Scenario 4c



Viewpoint 18: Portknockie - Bow Fiddle Rock Info Point

OSGB Grid Reference: 349411 E 868741 N

Distance to nearest turbine: 41.16 km

AOD: c 24 m

View taken from the coastal path next to Bow Fiddle Rock Information point.



Moray Offshore Renewables Ltd

Scale in metres: 1: 20,000



Geodetic Parameters: WGS84 UTM Zone 30N

Produced: LT

Reviewed: SM

Approved: SM

Date: 09/07/2012

Revision: B

Ref: 8460001-PPW0201-OPE-MAP-077



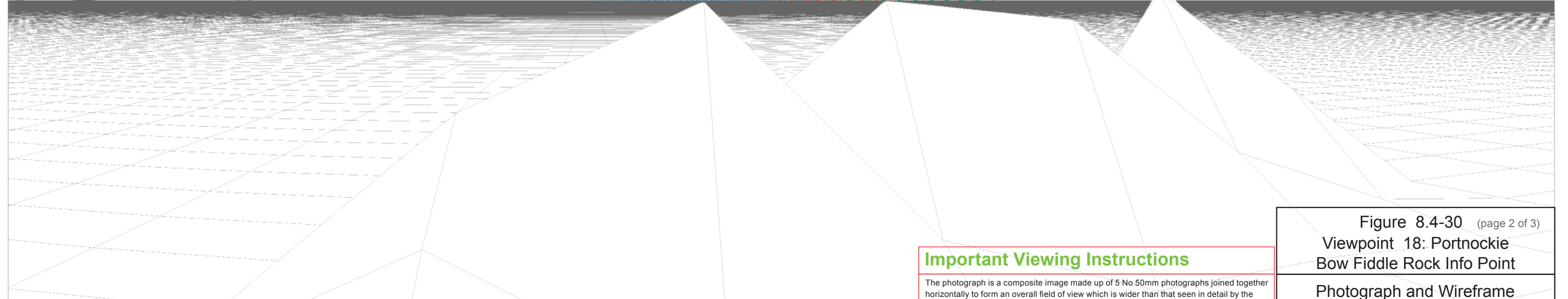
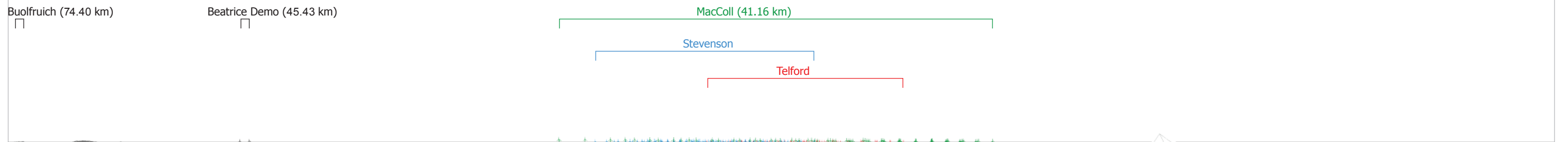
Figure 8.4-30 (page 1 of 3)

**Viewpoint 18: Portknockie
Bow Fiddle Rock Info Point Location**

**Moray Offshore
Renewables Ltd**



Existing view from Portnockie - Bow Fiddle Rock Info Point Distance to nearest turbine: 41.16 km (MacColl) Camera: Canon EOS 5D Mark II Focal Length: 50mm Horizontal Field of View: 72 degrees Camera Height: 1.5m Date: 06/09/11 Time: 13:55



Computer generated wireframe showing the proposed developments Telford (Red), Stevenson (Blue) and MacColl (Green) and other operational wind farm turbines in black

Important Viewing Instructions
 The photograph is a composite image made up of 5 No 50mm photographs joined together horizontally to form an overall field of view which is wider than that seen in detail by the human eye. For correct perspective viewing, these images must be viewed at an exact distance of 314 mm with one eye whilst curving the image in and exact arc of 72 degrees. This image should only be assessed in the real landscape from the same viewpoint.

Figure 8.4-30 (page 2 of 3)
 Viewpoint 18: Portnockie
 Bow Fiddle Rock Info Point
 Photograph and Wireframe
 Layout Scenario 4c

Reproduced from Ordnance Survey Landform Profile digital terrain height data © Crown Copyright 2012. All rights reserved. Licence Number 0100034870



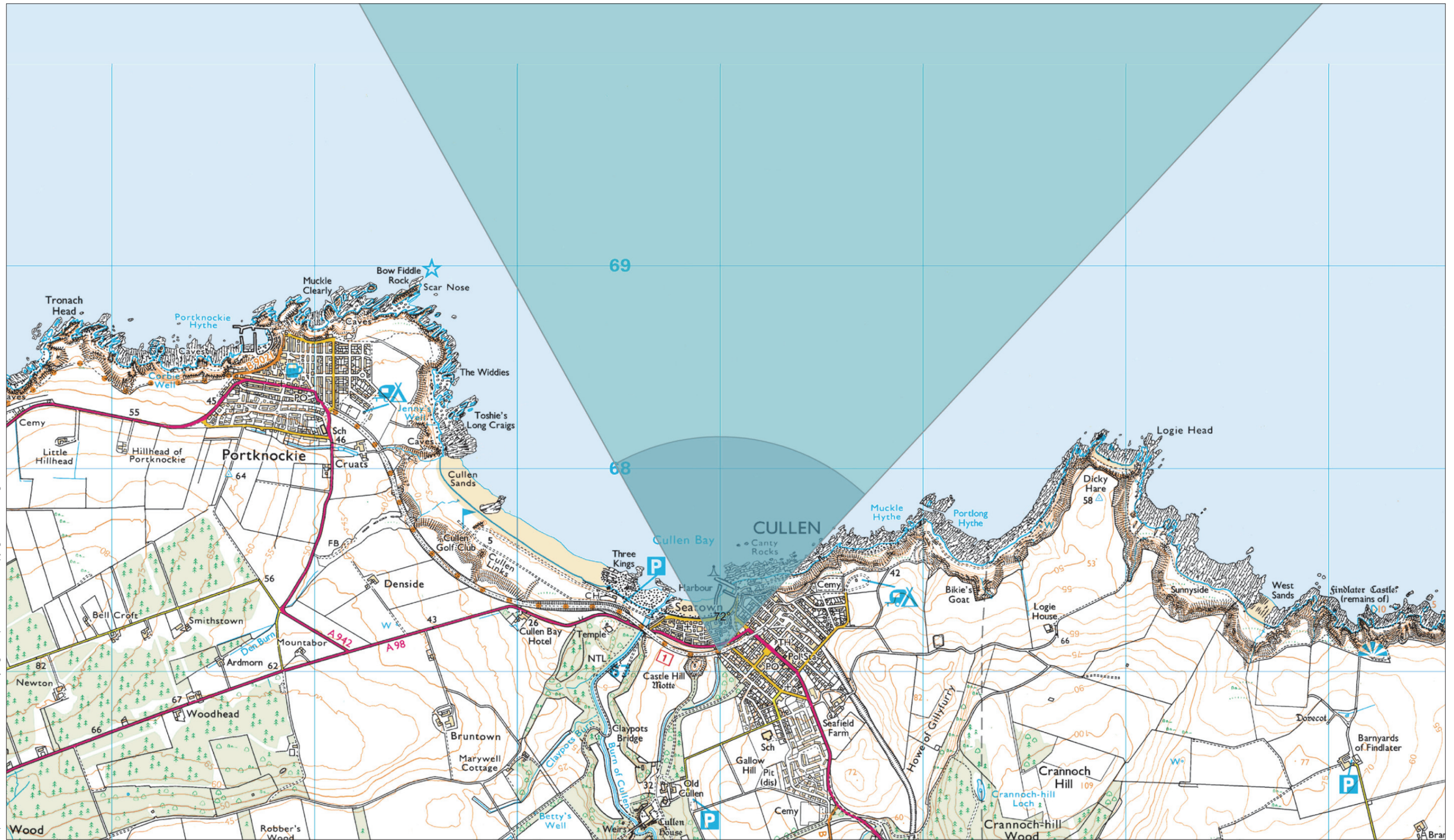
Photomontage view showing the proposed development Distance to nearest turbine: 41.16 km (MacColl) Camera: Canon EOS 5D Mark II Focal Length: 50mm Horizontal Field of View: 72 degrees Camera Height: 1.5m Date: 06/09/11 Time: 13:55

Important Viewing Instructions

This is a composite image made up of 5 No 50mm photographs joined together horizontally to form an overall field of view which is wider than that seen in detail by the human eye. For correct perspective viewing, this photograph, photomontage and wireline must be viewed at an exact distance of 314 mm with one eye whilst curving the image in and exact arc of 72 degrees.

This image should only be assessed in the real landscape from the same viewpoint.

Figure 8.4-30 (page 3 of 3) Viewpoint 18: Portnockie Bow Fiddle Rock Info Point
Photomontage
Layout Scenario 4c



Viewpoint 19: Cullen, Viaduct

OSGB Grid Reference: 350995 E 867102 N

Distance to nearest turbine: 42.87 km

AOD: c 35 m

View taken from footpath on elevated viaduct in Cullen



Moray Offshore Renewables Ltd

Scale in metres: 1: 20,000



Geodetic Parameters: WGS84 UTM Zone 30N

Produced: LT

Reviewed: SM

Approved: SM

Date: 09/07/2012

Revision: B

Ref: 8460001-PPW0201-OPE-MAP-078



Figure 8.4-31 (page 1 of 2)

**Viewpoint 19: Cullen, Viaduct
Location**

**Moray Offshore
Renewables Ltd**



Existing view from Cullen, Viaduct

Distance to nearest turbine: 42.87 km (MacColl)

Camera: Canon EOS 5D Mark II

Focal Length: 50mm

Horizontal Field of View: 72 degrees

Camera Height: 1.5m

Date: 06/09/11

Time: 13:23

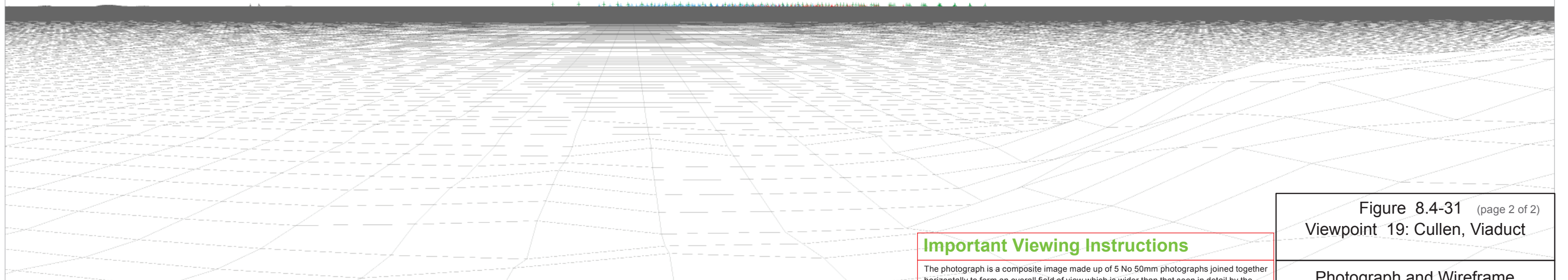
Buolfruch (76.58 km)

Beatrice Demo (47.45 km)

MacColl (42.87 km)

Stevenson

Telford



Computer generated wireframe showing the proposed developments Telford (Red), Stevenson (Blue) and MacColl (Green) and other operational wind farm turbines in black

Reproduced from Ordnance Survey Landform Profile digital terrain height data © Crown Copyright 2012. All rights reserved. Licence Number 0100034870

Important Viewing Instructions

The photograph is a composite image made up of 5 No 50mm photographs joined together horizontally to form an overall field of view which is wider than that seen in detail by the human eye. For correct perspective viewing, these images must be viewed at an exact distance of 314 mm with one eye whilst curving the image in and exact arc of 72 degrees. This image should only be assessed in the real landscape from the same viewpoint.

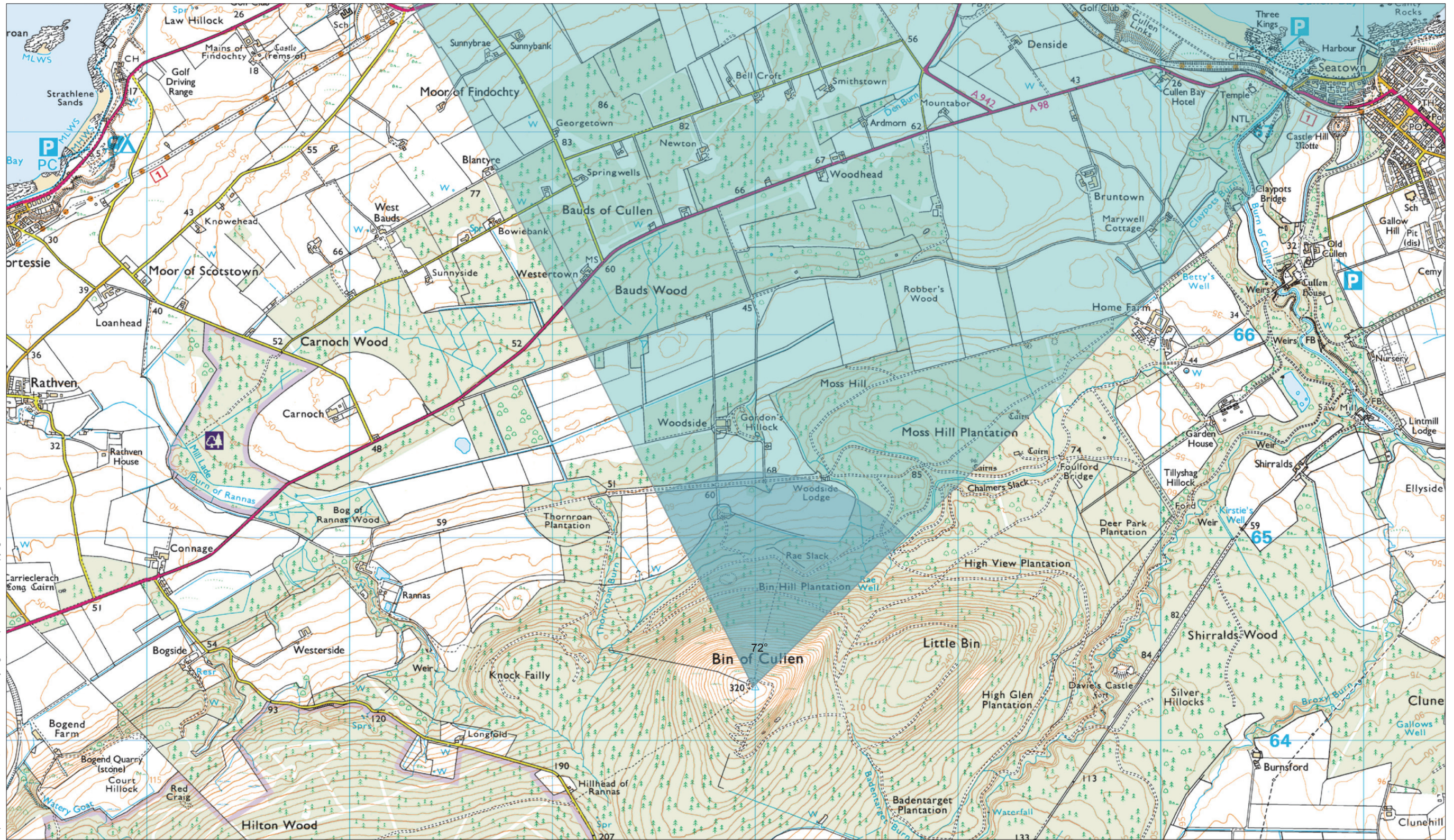
Figure 8.4-31 (page 2 of 2)
Viewpoint 19: Cullen, Viaduct

Photograph and Wireframe

Layout Scenario 4c

© COPYRIGHT STATEMENT: Moray Offshore Renewables Ltd © 2012. This document is the property of contractors and sub-contractors and shall not be reproduced nor transmitted without prior written approval.

Reproduced from 1:25,000 Ordnance Survey digital map data © Crown Copyright 2012. All rights reserved. Licence Number 0100031673



Viewpoint 20: Bin Hill

OSGB Grid Reference: 347989 E 864267 N

Distance to nearest turbine: 45.61 km

AOD: c 320 m

View taken from summit of Bin Hill near trig point



Moray Offshore Renewables Ltd

Scale in metres: 1: 20,000



Geodetic Parameters: WGS84 UTM Zone 30N

Produced: LT
Reviewed: SM
Approved: SM



Date: 09/07/2012 Revision: B

Ref: 8460001-PPW0201-OPE-MAP-079

Figure 8.4-32 (page 1 of 2)

Viewpoint 20: Bin Hill
Location

Moray Offshore
Renewables Ltd