



Photomontage view showing the proposed development

Distance to nearest turbine : 34.33 km (Telford)

Camera: Canon EOS 5D Mark II

Focal Length: 50mm

Horizontal Field of View: 72 degrees

Camera Height: 1.5m

Date: 08/09/12

Time: 16:12

## Important Viewing Instructions

This is a composite image made up of 5 No 50mm photographs joined together horizontally to form an overall field of view which is wider than that seen in detail by the human eye. For correct perspective viewing, this photograph, photomontage and wireline must be viewed at an exact distance of 314 mm with one eye whilst curving the image in and exact arc of 72 degrees.

This image should only be assessed in the real landscape from the same viewpoint.

Figure 8.4-14 (page 3 of 5)  
Viewpoint 2: Keiss Pier

Photomontage

**Layout Scenario 4c**





Photomontage view from Keiss Pier      Distance to nearest turbine: 34.33 km (Telford)      Camera: Canon EOS 5D Mark II      Focal length: 50 mm      Horizontal Field of View : 39.6 degrees      Camera Height: 1.5 m      Date: 08/09/12      Time: 16:12

This image should be viewed with both eyes from a distance of approximately 500mm\*

\*Calculation of viewing distance from The Highland Council "Visualisation Standards for Wind Energy Developments (January 2010)".

Figure 8.4-14 (page 4 of 5)  
Viewpoint 2: Keiss Pier

Photomontage  
(The Highland Council Visualisation Standards, 50 mm)  
**Layout Scenario 4c**





Photomontage view from Keiss Pier Distance to nearest turbine: 34.33 km (Telford) Camera: Canon EOS 5D Mark II Focal length: 75 mm Horizontal Field of View : 27 degrees Camera Height: 1.5 m Date: 08/09/12 Time: 16:12

This image should be viewed with both eyes from a distance of approximately 500mm\*

\*Calculation of viewing distance from The Highland Council "Visualisation Standards for Wind Energy Developments (January 2010)".

Figure 8.4-14 (page 5 of 5)  
Viewpoint 2: Keiss Pier

Photomontage  
(The Highland Council Visualisation Standards, 75 mm)  
**Layout Scenario 4c**





Existing view from Keiss Pier

Distance to nearest turbine: 34.62 km (Telford)

Camera: Canon EOS 5D Mark II

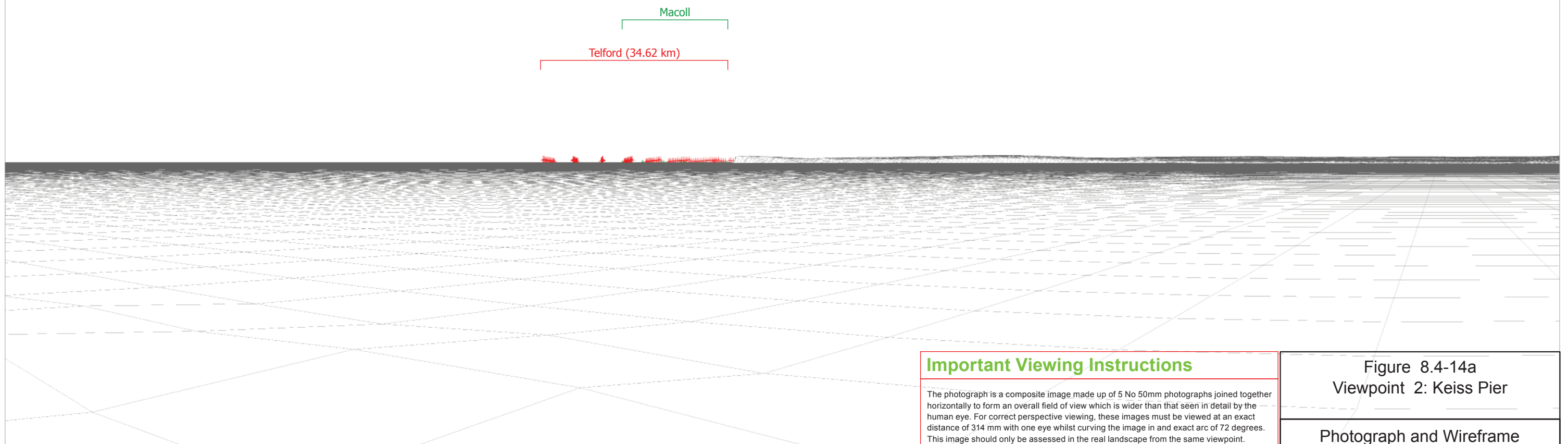
Focal Length: 50mm

Horizontal Field of View: 72mm

Camera Height: 1.5m

Date: 08/09/12

Time: 16:12



Computer generated wireframe showing the proposed developments Telford (Red), Stevenson (Blue) and MacColl (Green) and other operational wind farm turbines in black

Reproduced from Ordnance Survey Landform Profile digital terrain height data © Crown Copyright 2012. All rights reserved. Licence Number 0100034870

**Important Viewing Instructions**

The photograph is a composite image made up of 5 No 50mm photographs joined together horizontally to form an overall field of view which is wider than that seen in detail by the human eye. For correct perspective viewing, these images must be viewed at an exact distance of 314 mm with one eye whilst curving the image in and exact arc of 72 degrees. This image should only be assessed in the real landscape from the same viewpoint.

Date: 09/07/2012

Revision: B

Ref: 8460001-PPW0201-OPE-MAP-048

Figure 8.4-14a  
Viewpoint 2: Keiss Pier

Photograph and Wireframe

**Layout Scenario 1c**





Existing view from Keiss Pier

Distance to nearest turbine: 34.30 km (Telford)

Camera: Canon EOS 5D Mark II

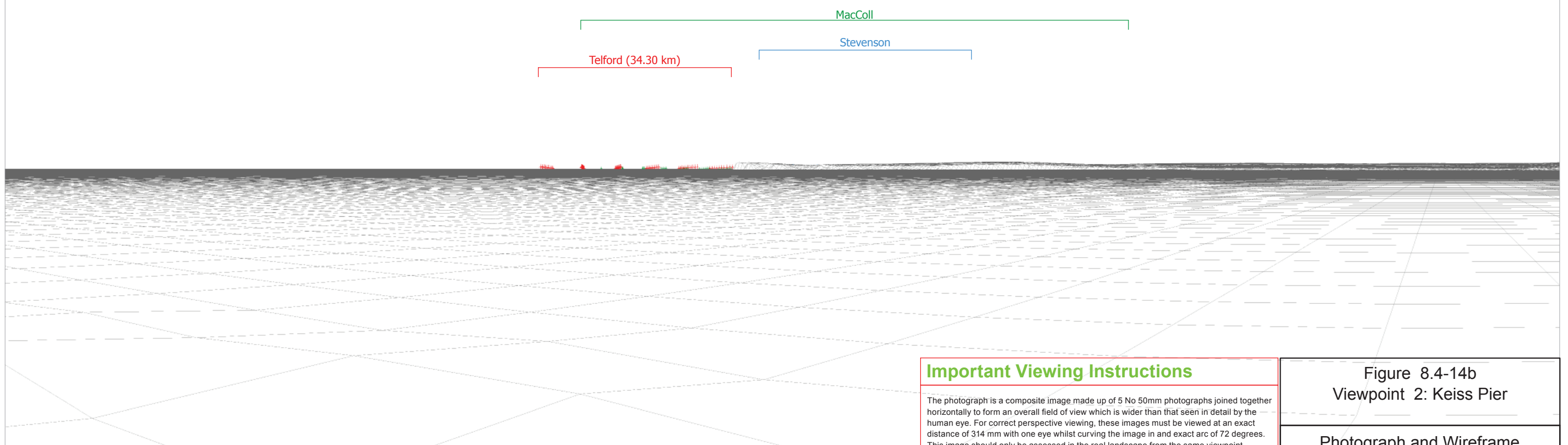
Focal Length: 50mm

Horizontal Field of View: 72mm

Camera Height: 1.5m

Date: 08/09/12

Time: 16:12



Computer generated wireframe showing the proposed developments Telford (Red), Stevenson (Blue) and MacColl (Green) and other operational wind farm turbines in black

Reproduced from Ordnance Survey Landform Profile digital terrain height data © Crown Copyright 2012. All rights reserved. Licence Number 0100034870

**Important Viewing Instructions**

The photograph is a composite image made up of 5 No 50mm photographs joined together horizontally to form an overall field of view which is wider than that seen in detail by the human eye. For correct perspective viewing, these images must be viewed at an exact distance of 314 mm with one eye whilst curving the image in and exact arc of 72 degrees. This image should only be assessed in the real landscape from the same viewpoint.

Date: 09/07/2012

Revision: B

Ref:

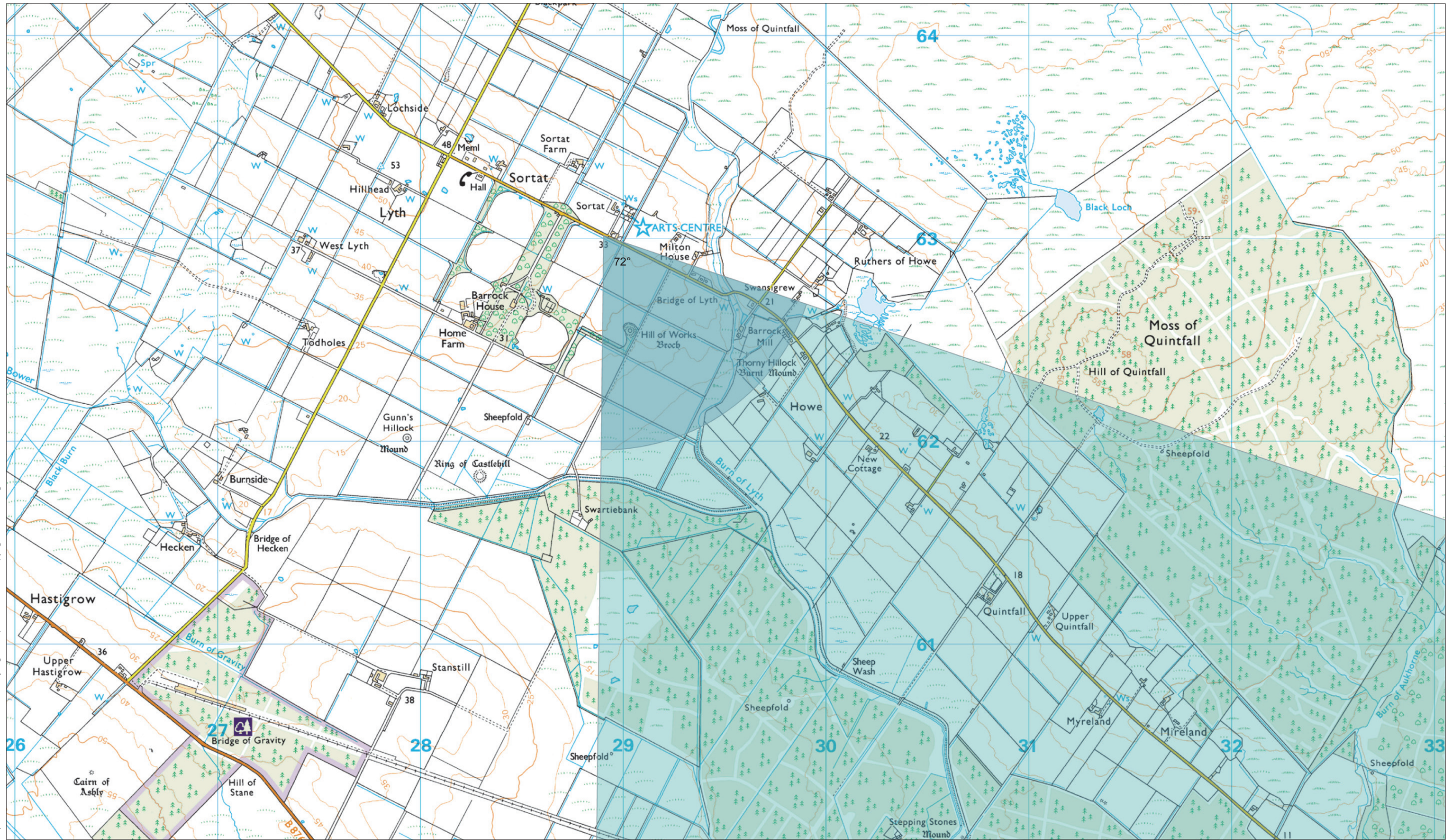
8460001-PPW0201-OPE-MAP-049

Figure 8.4-14b  
Viewpoint 2: Keiss Pier

Photograph and Wireframe

Layout Scenario 5c





**Viewpoint 3: Sortat**

OSGB Grid Reference: 328903 E 963016 N

Distance to nearest turbine: 40.11 km

AOD: c 34 m

View from near Lyth Arts Centre in Sortat on side of minor road that provides access and links across north-eastern part of Caithness.



**Moray Offshore Renewables Ltd**

Scale in metres: 1: 20,000



Geodetic Parameters: WGS84 UTM Zone 30N

Produced: LT

Reviewed: SM

Approved: SM

Date: 09/07/2012

Revision: B

Ref: 8460001-PPW0201-OPE-MAP-050



Figure 8.4-15 (page 1 of 2)

**Viewpoint 3: Sortat**  
Location

**Moray Offshore**  
**Renewables Ltd**





Existing view from Sortat

Distance to nearest turbine: 40.11 km (Telford)

Camera: Canon EOS 5D Mark II

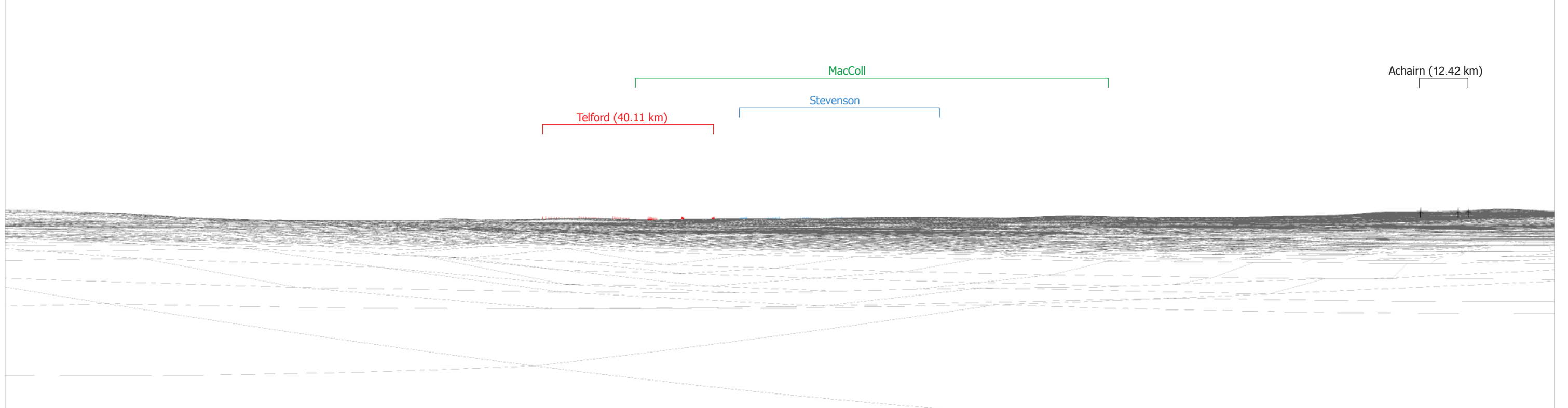
Focal Length: 50mm

Horizontal Field of View: 72 degrees

Camera Height: 1.5m

Date: 02/09/11

Time: 13:55



Computer generated wireframe showing the proposed developments Telford (Red), Stevenson (Blue) and MacColl (Green) and other operational wind farm turbines in black

Reproduced from Ordnance Survey Landform Profile digital terrain height data © Crown Copyright 2012. All rights reserved. Licence Number 0100034870

**Important Viewing Instructions**

The photograph is a composite image made up of 5 No 50mm photographs joined together horizontally to form an overall field of view which is wider than that seen in detail by the human eye. For correct perspective viewing, these images must be viewed at an exact distance of 314 mm with one eye whilst curving the image in and exact arc of 72 degrees. This image should only be assessed in the real landscape from the same viewpoint.

Figure 8.4-15 (page 2 of 2)  
Viewpoint 3: Sortat

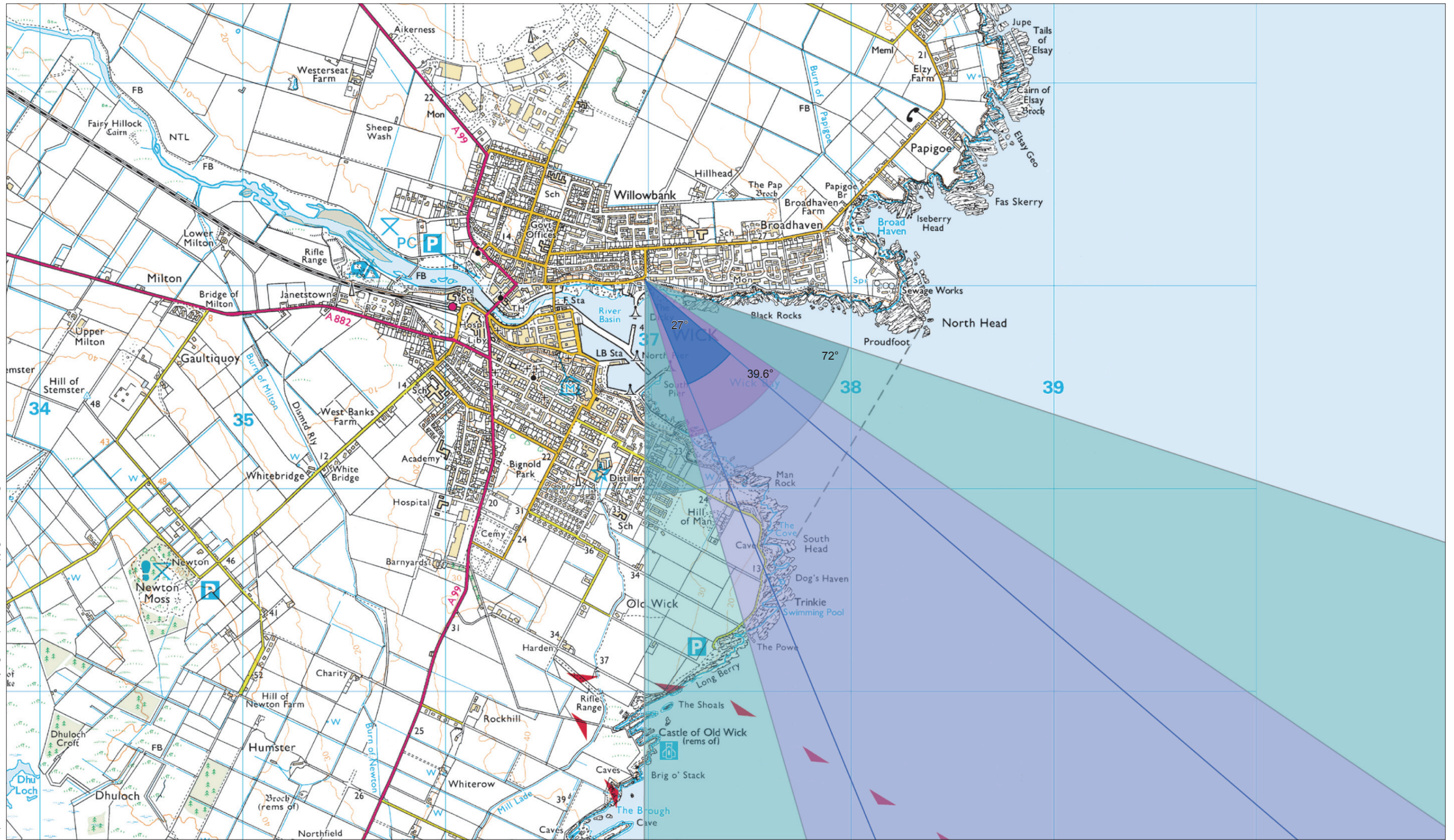
Photograph and Wireframe

Layout Scenario 4c



© COPYRIGHT STATEMENT: Moray Offshore Renewables Ltd © 2012. This document is the property of contractors and sub-contractors and shall not be reproduced nor transmitted without prior written approval.

Reproduced from 1:25,000 Ordnance Survey digital map data © Crown Copyright 2012. All rights reserved. Licence Number 0100031673



**Viewpoint 4: Wick Bay**

OSGB Grid Reference: 336985 E 951027 N

Distance to nearest turbine: 26.16 km

AOD: c 12 m

View from northern edge of Wick Bay, on Scalesburn Road pavement.



**Moray Offshore Renewables Ltd**

Scale in metres: 1: 20,000



Geodetic Parameters: WGS84 UTM Zone 30N

Produced: LT

Reviewed: SM

Approved: SM

Date: 09/07/2012

Revision: B

Ref: 8460001-PPW0201-OPE-MAP-051



Figure 8.4-16 (page 1 of 5)  
Viewpoint 4: Wick Bay  
Location

**Moray Offshore  
Renewables Ltd**





Existing view from Wick Bay

Distance to nearest turbine: 26.16 km (Telford)

Camera: Canon EOS 5D Mark II

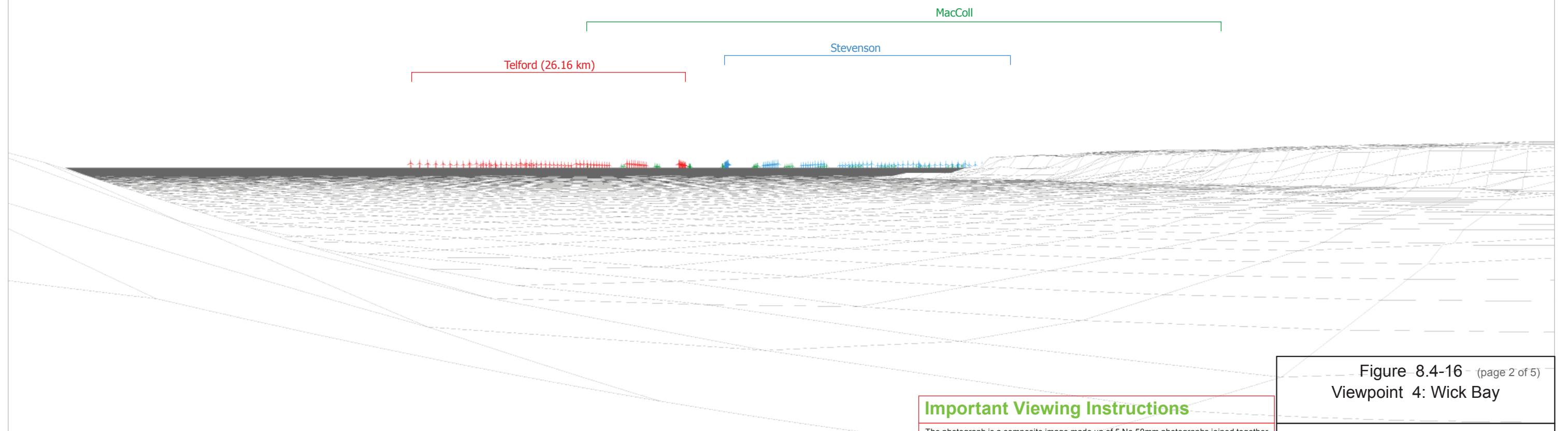
Focal Length: 50mm

Horizontal Field of View: 72 degrees

Camera Height: 1.5m

Date: 08/09/12

Time: 16:30



Computer generated wireframe showing the proposed developments Telford (Red), Stevenson (Blue) and MacColl (Green) and other operational wind farm turbines in black

Reproduced from Ordnance Survey Landform Profile digital terrain height data © Crown Copyright 2012. All rights reserved. Licence Number 0100034870

**Important Viewing Instructions**

The photograph is a composite image made up of 5 No 50mm photographs joined together horizontally to form an overall field of view which is wider than that seen in detail by the human eye. For correct perspective viewing, these images must be viewed at an exact distance of 314 mm with one eye whilst curving the image in and exact arc of 72 degrees. This image should only be assessed in the real landscape from the same viewpoint.

Figure 8.4-16 (page 2 of 5)  
Viewpoint 4: Wick Bay

Photograph and Wireframe

Layout Scenario 4c





Photomontage view showing the proposed development

Distance to nearest turbine: 26.16 km (Telford)

Camera: Canon EOS 5D Mark II

Focal Length: 50mm

Horizontal Field of View: 72 degrees

Camera Height: 1.5m

Date: 08/09/12

Time: 16:30

### Important Viewing Instructions

This is a composite image made up of 5 No 50mm photographs joined together horizontally to form an overall field of view which is wider than that seen in detail by the human eye. For correct perspective viewing, this photograph, photomontage and wireline must be viewed at an exact distance of 314 mm with one eye whilst curving the image in an exact arc of 72 degrees.

This image should only be assessed in the real landscape from the same viewpoint.

Figure 8.4-16 (page 3 of 5)  
Viewpoint 4: Wick Bay

Photomontage

Layout Scenario 4c