

Moray Offshore Renewables Ltd

KEY

- Turbine Layout Scenario 4c:
- Telford 7MW Turbines (204m)
 - Stevenson 7MW Turbines (204m)
 - MacColl 7MW Turbines (204m)
 - Telford Development Area
 - Stevenson Development Area
 - MacColl Development Area
 - Eastern Development Area
 - 10km Distance Radii
 - 50km Study Area Boundary
 - Local Authority Boundary
 - Offshore Cable Route
 - Onshore Cable Route
 - OnTI LVA Study Area

Horizontal Scale: 1:550,000 A3 Chart
 0 10,000 20,000 Meters

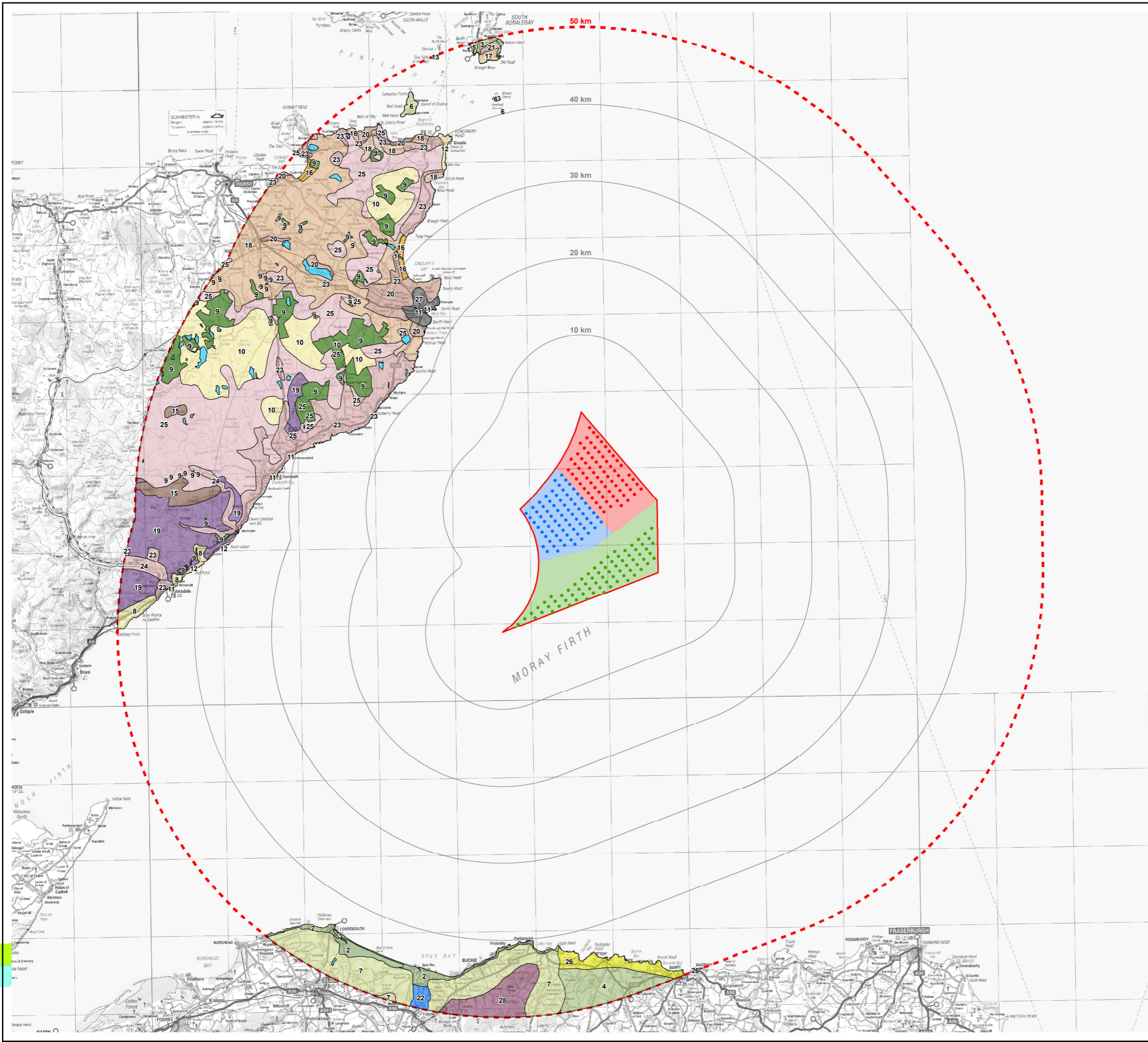
Geodetic Parameters: WGS84 UTM Zone 30N

Produced: LA
 Reviewed: SM
 Approved: SM

Date: 09/07/2012 Revision: B
 REF: 8460001-PPW0201-OPE-MAP-001

Figure 5.4-1
SLVIA Study Area - Overview
 Moray Offshore Renewables Ltd

This map contains Ordnance Survey data © Crown copyright and database right, 2012. This document is the property of contractors and sub-contractors and shall not be reproduced nor transmitted without prior written approval. Moray Offshore Renewables Ltd © 2012.



Moray Offshore Renewables Ltd

KEY

- Turbine Layout Scenario 4c:
- Telford 7MW Turbines (204m)
 - Stevenson 7MW Turbines (204m)
 - MacColl 7MW Turbines (204m)

- Eastern Development Zone
- 10km Distance Radii
- ⋯ 50km Study Area Boundary

Landscape Character

- 1 Cliff Landscapes
- 2 Coastal
- 3 Coastal Basins
- 4 Coastal Farmland
- 5 Coastal Hills and Heath
- 6 Coastal Island
- 7 Coastal Lowlands
- 8 Coastal Shelf
- 9 Coniferous Woodland Plantation
- 10 Flat Peatland
- 11 Harbour
- 12 High Cliffs and Sheltered Bays
- 13 Holms
- 14 Inland Loch
- 15 Lone Mountains
- 16 Long Beaches Dunes and Links
- 17 Low Island Pastures
- 18 Mixed Agriculture and Settlement
- 19 Moorland Slopes and Hills
- 20 Open Intensive Farmland
- 21 Plateau Heaths and Pasture
- 22 River Valleys
- 23 Small Farms and Crofts
- 24 Strath
- 25 Sweeping Moorland
- 26 The Coast
- 27 Town
- 28 Uplands

Horizontal Scale: 1:475,000 A3 Chart
 0 10,000 20,000 Meters

Geodetic Parameters: WGS84 UTM Zone 30N

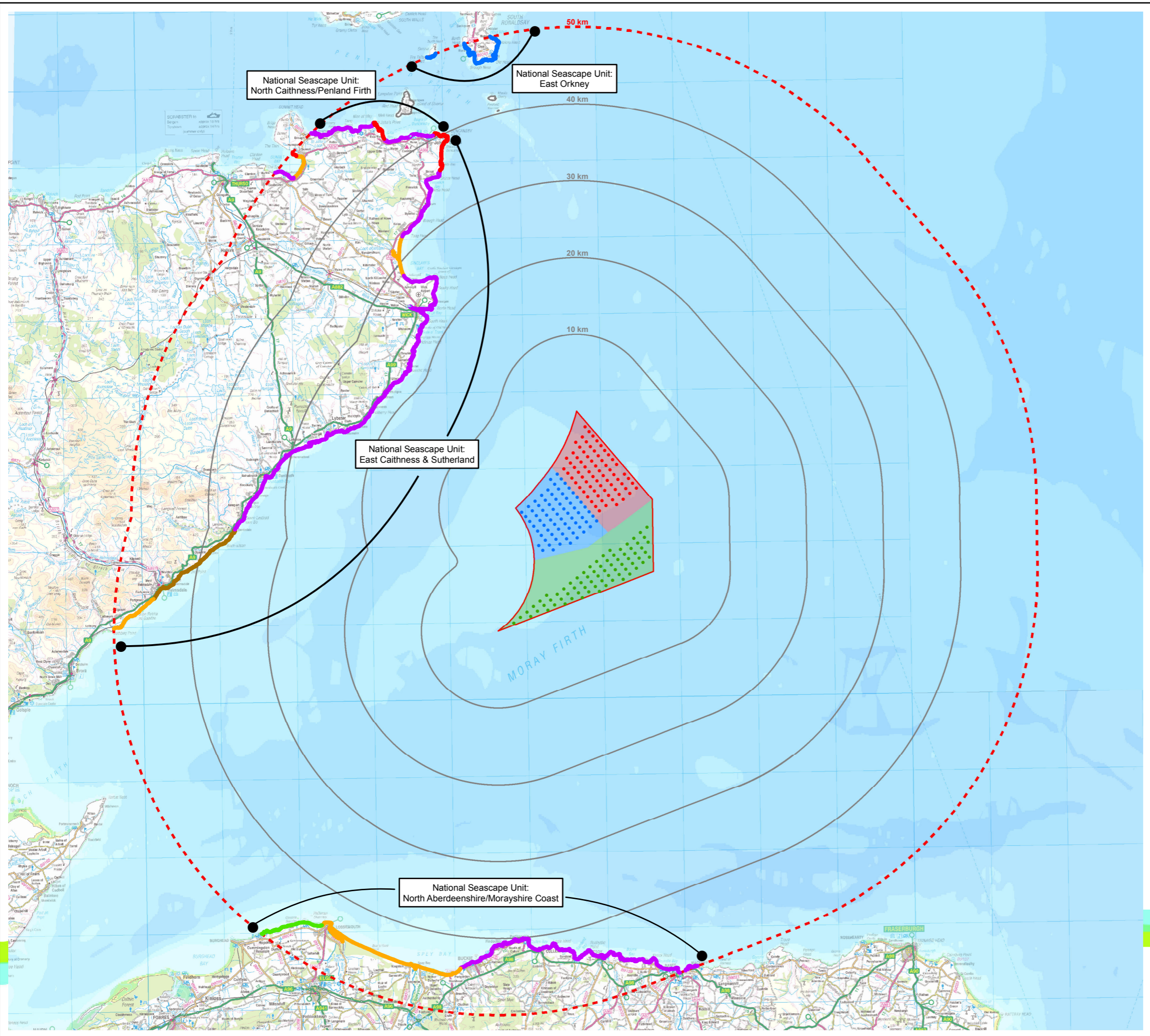
Produced: LA
 Reviewed: SM
 Approved: SM

Date: 09/07/2012 Revision: B
 REF: 8460001-PPW0200-OPE-MAP-002

**Figure 5.4-2
 Landscape Character**

**Moray Offshore
 Renewables Ltd**

© SeaZone Solutions Limited, 2005, [012009.001, 02201.009]. This map contains Ordnance Survey data © Crown copyright and database right 2012. Moray Offshore Renewables Ltd © 2012. This document is the property of contractors and sub-contractors and shall not be reproduced nor transmitted without prior written approval.



Moray Offshore Renewables Ltd

KEY

Turbine Layout Scenario 4c:

- Telford 7MW Turbines (204m)
- Stevenson 7MW Turbines (204m)
- MacColl 7MW Turbines (204m)
- Telford Development Area
- Stevenson Development Area
- MacColl Development Area
- Eastern Development Area
- 10km Distance Radii
- 50km Study Area Boundary

National Coastal Character Types

- Type 1 - Remote High Cliffs
- Type 2 - Rocky Coastline / Open Sea Views
- Type 3 - Deposition Coastline, Open Views
- Type 4 - Outer Firths
- Type 6 - Narrow Coastal Shelf
- Type 12 - Deposition Coasts of Islands

Horizontal Scale: 1:475,000 A3 Chart
 0 10,000 20,000 Meters

Geodetic Parameters: WGS84 UTM Zone 30N

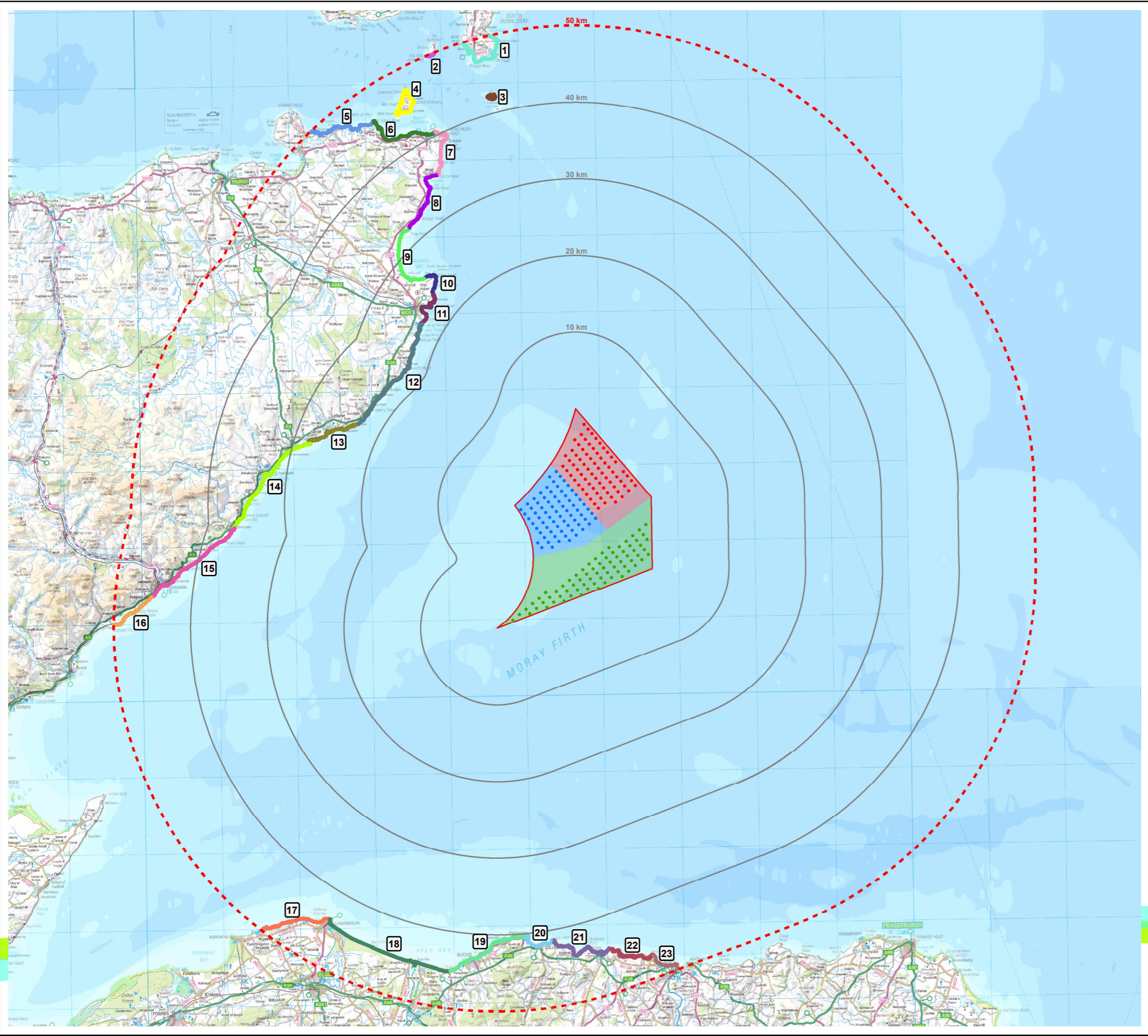
Produced: TR
 Reviewed: SM
 Approved: SM

Date: 09/07/2012 Revision: B
 REF: 8460001-PPW0201-OPE-MAP-003

Figure 5.4-3
National Coastal Character

Moray Offshore
 Renewables Ltd

© SeaZone Solutions Limited, 2005, [012009.001, 02201.009]. This map contains Ordnance Survey data © Crown copyright and database right 2012. Moray Offshore Renewables Ltd © 2012. This document is the property of contractors and sub-contractors and shall not be reproduced nor transmitted without prior written approval.



Moray Offshore Renewables Ltd

KEY

- Turbine Layout Scenario 4c:
- Telford 7MW Turbines (204m)
 - Stevenson 7MW Turbines (204m)
 - MacColl 7MW Turbines (204m)
 - Telford Development Area
 - Stevenson Development Area
 - MacColl Development Area
 - Eastern Development Area
 - 10km Distance Radii
 - 50km Study Area Boundary

Coastal Character Areas

- 1 South Ronaldsay
- 2 Swona Island
- 3 Pentland Skerries
- 4 Island of Stroma
- 5 Scarfskerry
- 6 Gills Bay & John O'Groats
- 7 Duncansby Head
- 8 Freswick Bay & Nybster Coast
- 9 Sinclair's Bay
- 10 Noss Head
- 11 Wick Bay
- 12 Sarclet Head
- 13 Lybster Bay
- 14 Dunbeath Bay
- 15 Helmsdale to Berriedale Coastal Shelf
- 16 Brora to Helmsdale Deposition Coast
- 17 Lossiemouth to Burghead Coast
- 18 Spey Bay
- 19 Portgordon to Portnockie Coast
- 20 Cullen Bay
- 21 Sandend Bay
- 22 Boyne Bay
- 23 Boyndie Bay

Horizontal Scale: 1:475,000 A3 Chart
 0 10,000 20,000 Meters

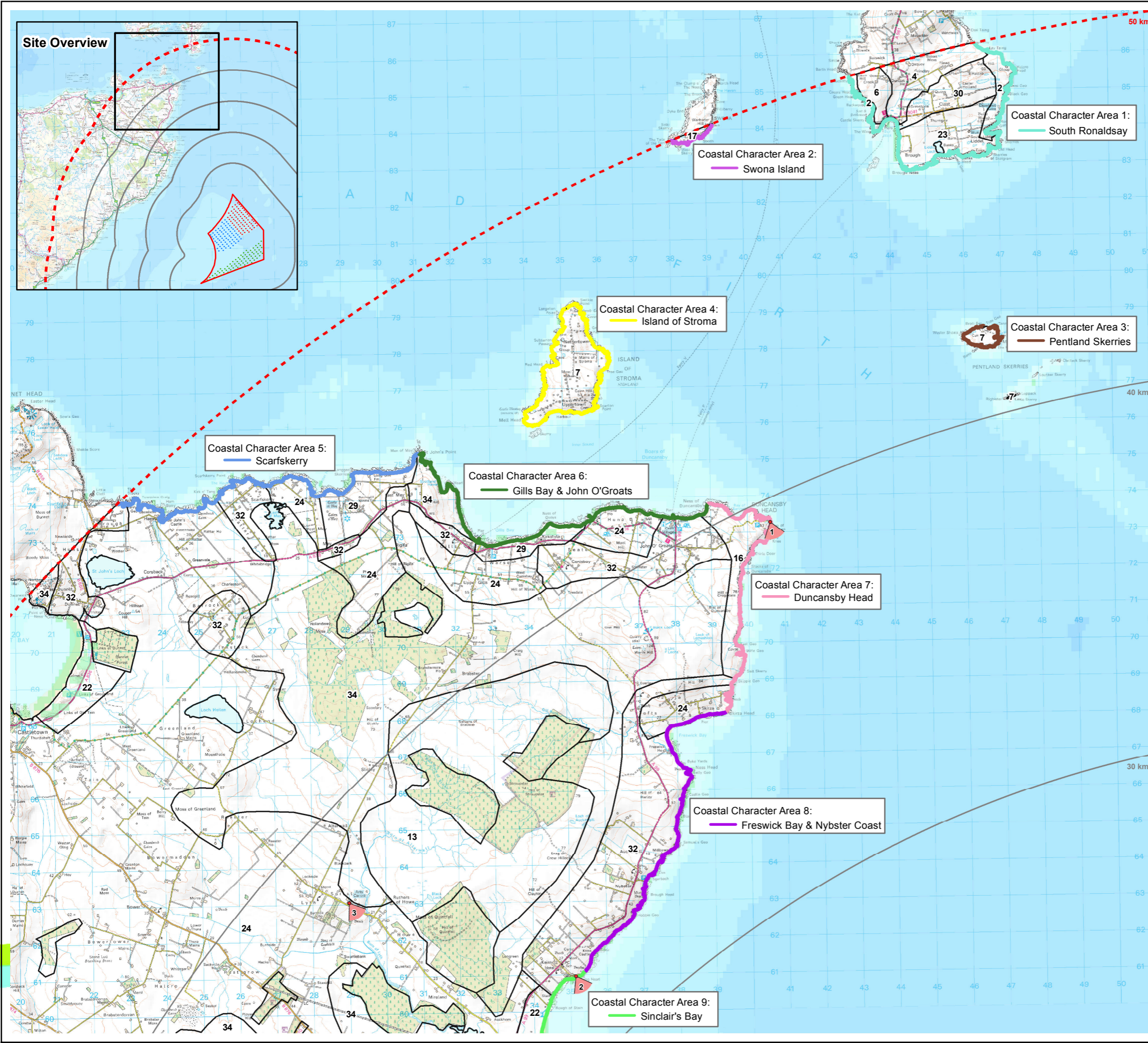
Geodetic Parameters: WGS84 UTM Zone 30N

Produced: TR
 Reviewed: SM
 Approved: SM

Date: 09/07/2012 Revision: B
 REF: 8460001-PPW0201-OPE-MAP-004

Figure 5.4-4
Coastal Character Areas
(Context)

Moray Offshore
 Renewables Ltd



Moray Offshore Renewables Ltd

- KEY**
- Turbine Layout Scenario 4c:
- Telford 7MW Turbines (204m)
 - Stevenson 7MW Turbines (204m)
 - MacColl 7MW Turbines (204m)
 - Eastern Development Area
 - 10km Distance Radii
 - 50km Study Area Boundary
 - Landscape Character *
 - ▽ Viewpoint Location **
- Coastal Character Areas**
- 1 South Ronaldsay
 - 2 Swona Island
 - 3 Pentland Skerries
 - 4 Island of Stroma
 - 5 Scarfskerry
 - 6 Gills Bay & John O'Groats
 - 7 Duncansby Head
 - 8 Freswick Bay & Nybster Coast
 - 9 Sinclair's Bay

Note:
 * Landscape types listed in Figure 5.4.2
 ** Viewpoint locations listed in Figure 5.4.7

Horizontal Scale: 1:100,000 A3 Chart
 0 2,500 5,000 Meters

Geodetic Parameters: WGS84 UTM Zone 30N

Produced: TR
 Reviewed: SM
 Approved: SM

Date: 09/07/2012 Revision: B
 REF: 8460001-PPW0201-OPE-MAP-005

Figure 5.4-4a
Coastal Character Areas
(Caithness North)

Moray Offshore
 Renewables Ltd