



Existing view from Lossiemouth Harbour

Distance to nearest turbine: 45.81 km (MacColl)

Camera: Canon EOS 5D Mark II

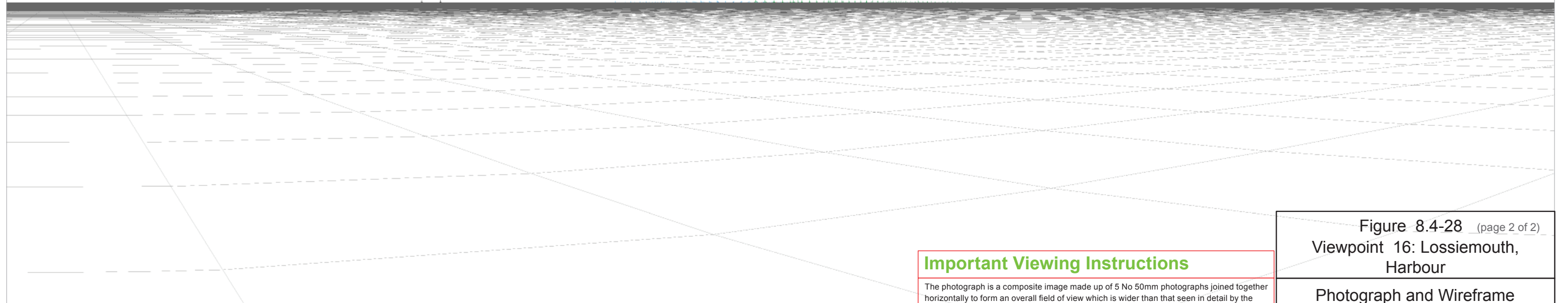
Focal Length: 50mm

Horizontal Field of View: 72 degrees

Camera Height: 1.5m

Date: 06/09/11

Time:10:37



Computer generated wireframe showing no visibility

Reproduced from Ordnance Survey Landform Profile digital terrain height data © Crown Copyright 2012. All rights reserved. Licence Number 0100034870

Important Viewing Instructions

The photograph is a composite image made up of 5 No 50mm photographs joined together horizontally to form an overall field of view which is wider than that seen in detail by the human eye. For correct perspective viewing, these images must be viewed at an exact distance of 314 mm with one eye whilst curving the image in and exact arc of 72 degrees. This image should only be assessed in the real landscape from the same viewpoint.

Figure 8.4-28 (page 2 of 2)
Viewpoint 16: Lossiemouth, Harbour

Photograph and Wireframe

Layout Scenario 4c

© COPYRIGHT STATEMENT: Moray Offshore Renewables Ltd © 2012. This document is the property of contractors and sub-contractors and shall not be reproduced nor transmitted without prior written approval.

Reproduced from 1:25,000 Ordnance Survey digital map data © Crown Copyright 2012. All rights reserved. Licence Number 0100031673



Viewpoint 17: Buckie, Cliff Terrace

OSGB Grid Reference: 343091 E 865825 N

Distance to nearest turbine: 44.35 km

AOD: c 25 m

View taken from Cliff Terrace adjacent to the lighthouse.



Moray Offshore Renewables Ltd

Scale in metres: 1: 20,000



Geodetic Parameters: WGS84 UTM Zone 30N

Produced: LT

Reviewed: SM

Approved: SM

Date: 09/07/2012

Revision: B

Ref: 8460001-PPW0201-OPE-MAP-076



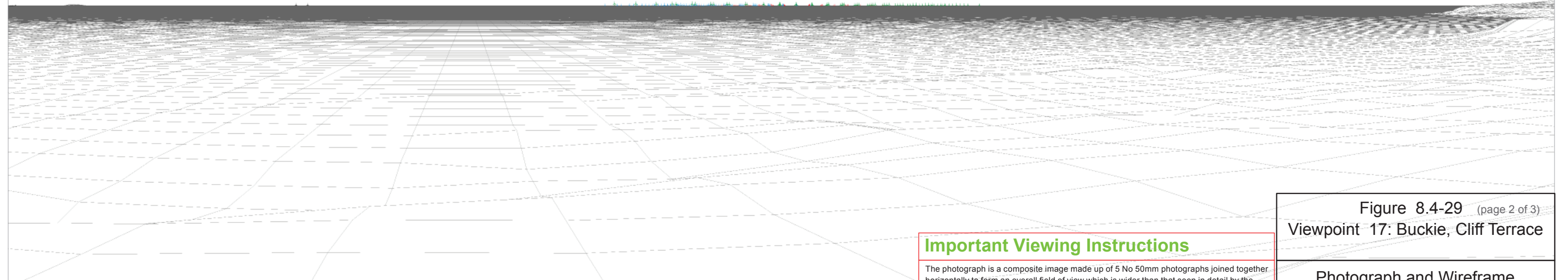
Figure 8.4-29 (page 1 of 3)
Viewpoint 17: Buckie, Cliff Terrace
Location

Moray Offshore
Renewables Ltd



Existing view from Buckie, Cliff Terrace Distance to nearest turbine: 44.35 km (MacColl) Camera: Canon EOS 5D Mark II Focal Length: 50mm Horizontal Field of View: 72 degrees Camera Height: 1.5m Date: 06/09/11 Time: 14:24

Buolfrulich (74.49 km) Beatrice Demo (47.02 km)



Computer generated wireframe showing the proposed developments Telford (Red), Stevenson (Blue) and MacColl (Green) and other operational wind farm turbines in black

Important Viewing Instructions

The photograph is a composite image made up of 5 No 50mm photographs joined together horizontally to form an overall field of view which is wider than that seen in detail by the human eye. For correct perspective viewing, these images must be viewed at an exact distance of 314 mm with one eye whilst curving the image in and exact arc of 72 degrees. This image should only be assessed in the real landscape from the same viewpoint.

Figure 8.4-29 (page 2 of 3)
Viewpoint 17: Buckie, Cliff Terrace

Photograph and Wireframe
Layout Scenario 4c



Photomontage view showing the proposed development

Distance to nearest turbine: 44.35 km (MacColl)

Camera: Canon EOS 5D Mark II

Focal Length: 50mm

Horizontal Field of View: 72 degrees

Camera Height: 1.5m

Date: 06/09/11

Time: 14:24

Important Viewing Instructions

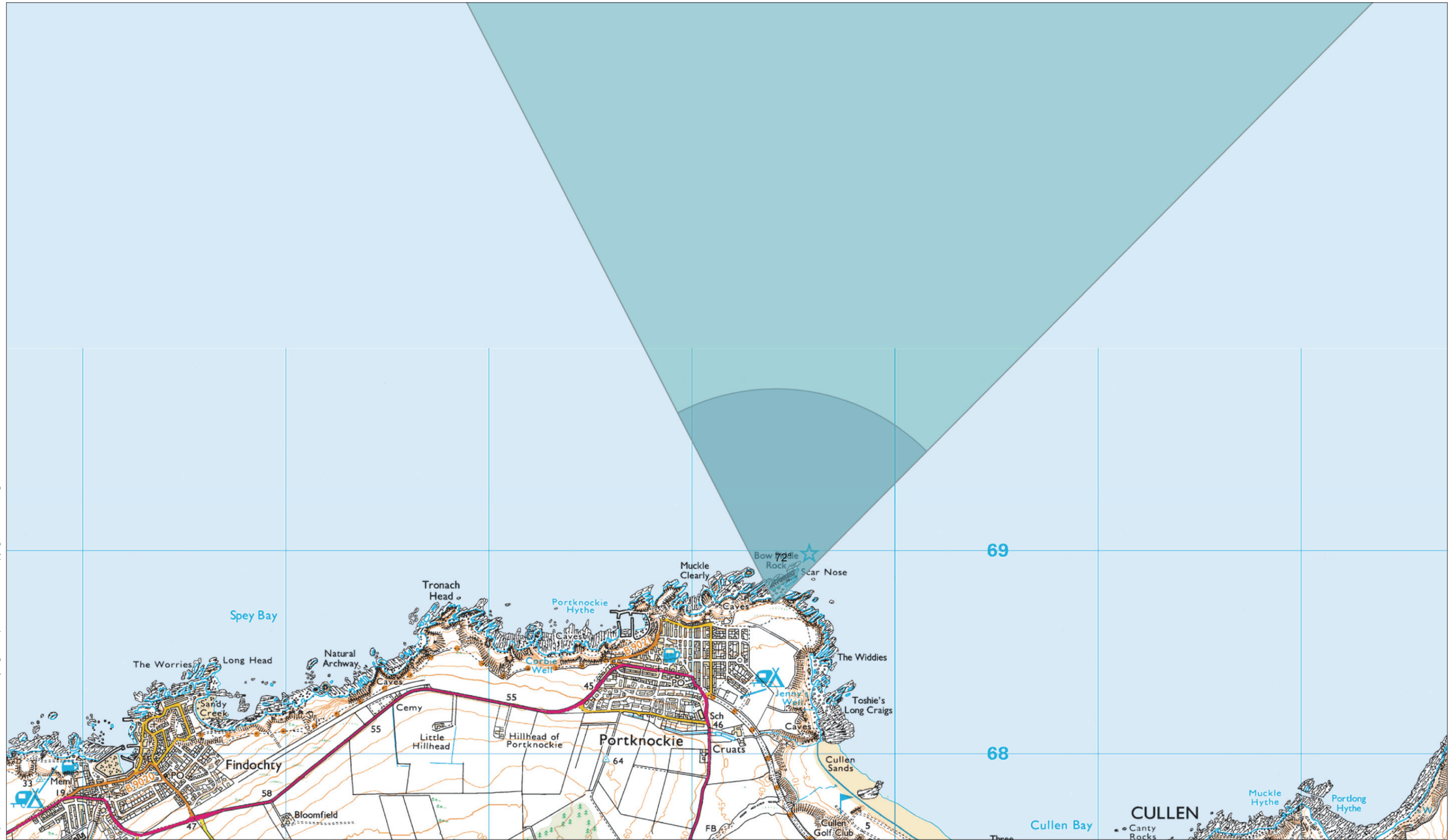
This is a composite image made up of 5 No 50mm photographs joined together horizontally to form an overall field of view which is wider than that seen in detail by the human eye. For correct perspective viewing, this photograph, photomontage and wireline must be viewed at an exact distance of 314 mm with one eye whilst curving the image in an exact arc of 72 degrees.

This image should only be assessed in the real landscape from the same viewpoint.

Figure 8.4-29 (page 3 of 3)
Viewpoint 17: Buckie, Cliff Terrace

Photomontage

Layout Scenario 4c



Viewpoint 18: Portknockie - Bow Fiddle Rock Info Point

OSGB Grid Reference: 349411 E 868741 N

Distance to nearest turbine: 41.16 km

AOD: c 24 m

View taken from the coastal path next to Bow Fiddle Rock Information point.



Moray Offshore Renewables Ltd

Scale in metres: 1: 20,000



Geodetic Parameters: WGS84 UTM Zone 30N

Produced: LT

Reviewed: SM

Approved: SM

Date: 09/07/2012

Revision: B

Ref: 8460001-PPW0201-OPE-MAP-077



Figure 8.4-30 (page 1 of 3)

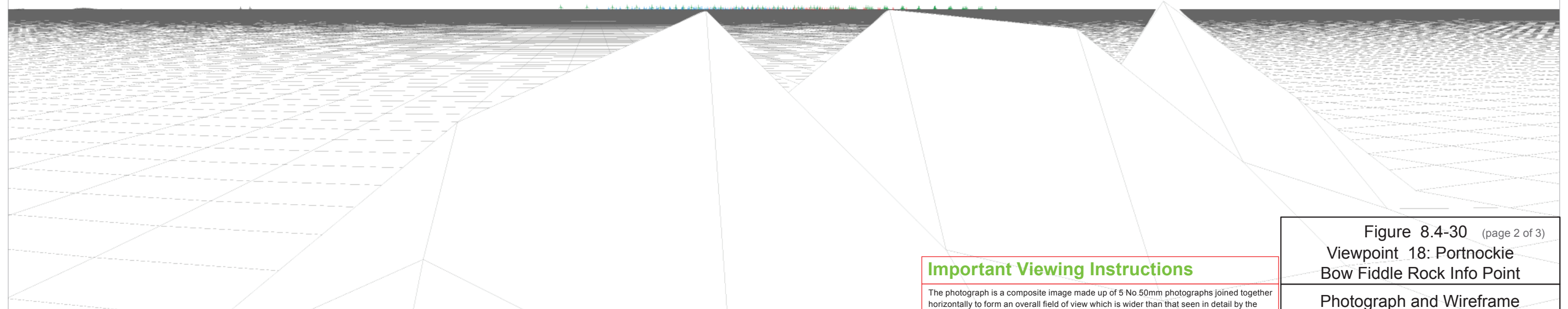
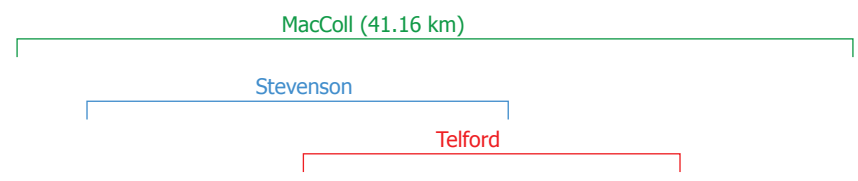
**Viewpoint 18: Portknockie
Bow Fiddle Rock Info Point Location**

**Moray Offshore
Renewables Ltd**



Existing view from Portnockie - Bow Fiddle Rock Info Point Distance to nearest turbine: 41.16 km (MacColl) Camera: Canon EOS 5D Mark II Focal Length: 50mm Horizontal Field of View: 72 degrees Camera Height: 1.5m Date: 06/09/11 Time: 13:55

Buolfrulich (74.40 km) Beatrice Demo (45.43 km)



Computer generated wireframe showing the proposed developments Telford (Red), Stevenson (Blue) and MacColl (Green) and other operational wind farm turbines in black

Important Viewing Instructions
 The photograph is a composite image made up of 5 No 50mm photographs joined together horizontally to form an overall field of view which is wider than that seen in detail by the human eye. For correct perspective viewing, these images must be viewed at an exact distance of 314 mm with one eye whilst curving the image in and exact arc of 72 degrees. This image should only be assessed in the real landscape from the same viewpoint.

Figure 8.4-30 (page 2 of 3)
 Viewpoint 18: Portnockie
 Bow Fiddle Rock Info Point
 Photograph and Wireframe
 Layout Scenario 4c

Reproduced from Ordnance Survey Landform Profile digital terrain height data © Crown Copyright 2012. All rights reserved. Licence Number 0100034870



Photomontage view showing the proposed development Distance to nearest turbine: 41.16 km (MacColl) Camera: Canon EOS 5D Mark II Focal Length: 50mm Horizontal Field of View: 72 degrees Camera Height: 1.5m Date: 06/09/11 Time: 13:55

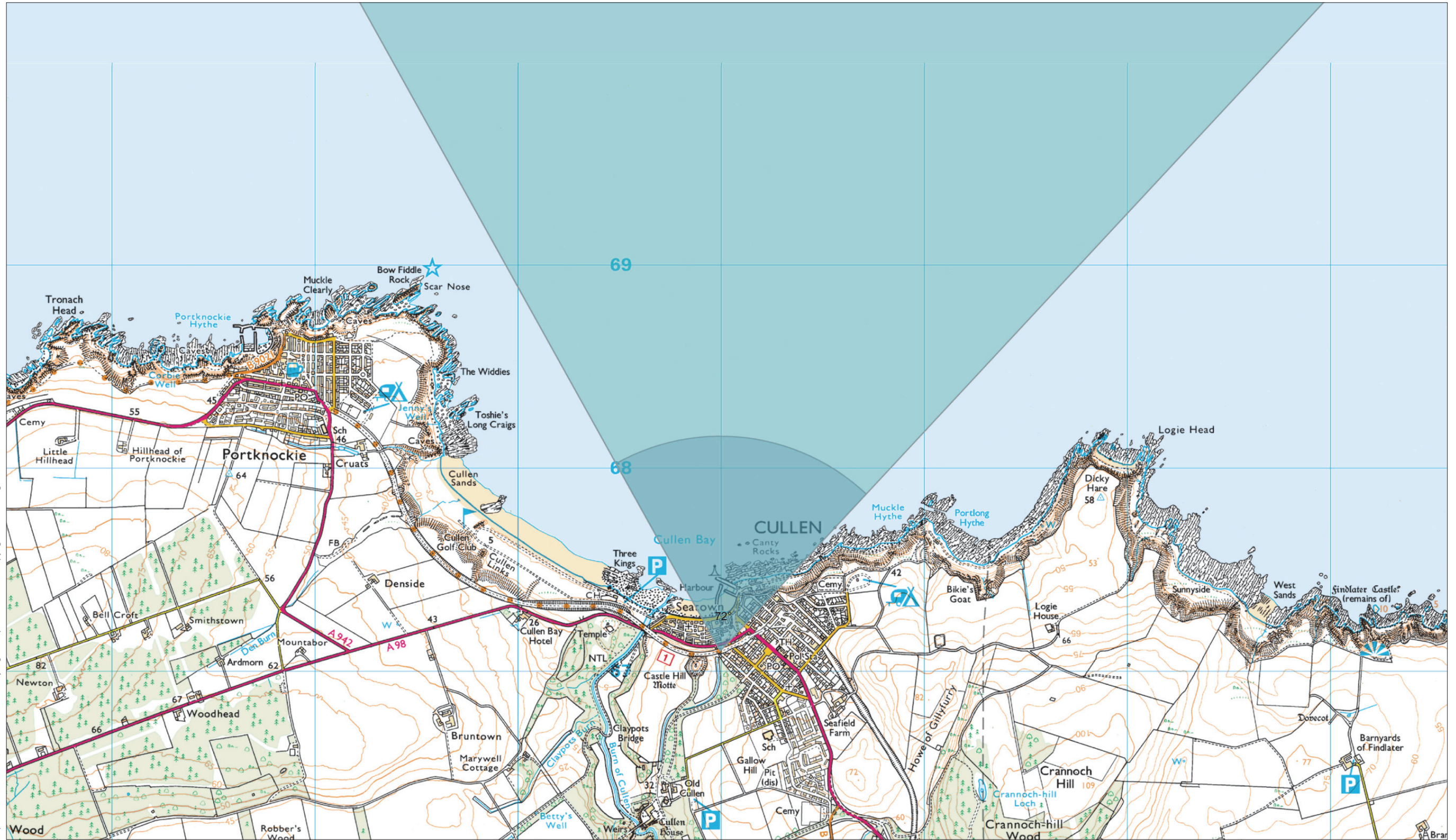
Important Viewing Instructions

This is a composite image made up of 5 No 50mm photographs joined together horizontally to form an overall field of view which is wider than that seen in detail by the human eye. For correct perspective viewing, this photograph, photomontage and wireline must be viewed at an exact distance of 314 mm with one eye whilst curving the image in and exact arc of 72 degrees.

This image should only be assessed in the real landscape from the same viewpoint.

Figure 8.4-30 (page 3 of 3) Viewpoint 18: Portnockie Bow Fiddle Rock Info Point
Photomontage
Layout Scenario 4c

Reproduced from 1:25,000 Ordnance Survey digital map data © Crown Copyright 2012. All rights reserved. Licence Number 0100031673



Viewpoint 19: Cullen, Viaduct

OSGB Grid Reference: 350995 E 867102 N

Distance to nearest turbine: 42.87 km

AOD: c 35 m

View taken from footpath on elevated viaduct in Cullen



Moray Offshore Renewables Ltd

Scale in metres: 1: 20,000



Geodetic Parameters: WGS84 UTM Zone 30N

Produced: LT
Reviewed: SM
Approved: SM



Date: 09/07/2012 Revision: B

Ref: 8460001-PPW0201-OPE-MAP-078

Figure 8.4-31 (page 1 of 2)
Viewpoint 19: Cullen, Viaduct
Location

Moray Offshore
Renewables Ltd



Existing view from Cullen, Viaduct

Distance to nearest turbine: 42.87 km (MacColl)

Camera: Canon EOS 5D Mark II

Focal Length: 50mm

Horizontal Field of View: 72 degrees

Camera Height: 1.5m

Date: 06/09/11

Time: 13:23

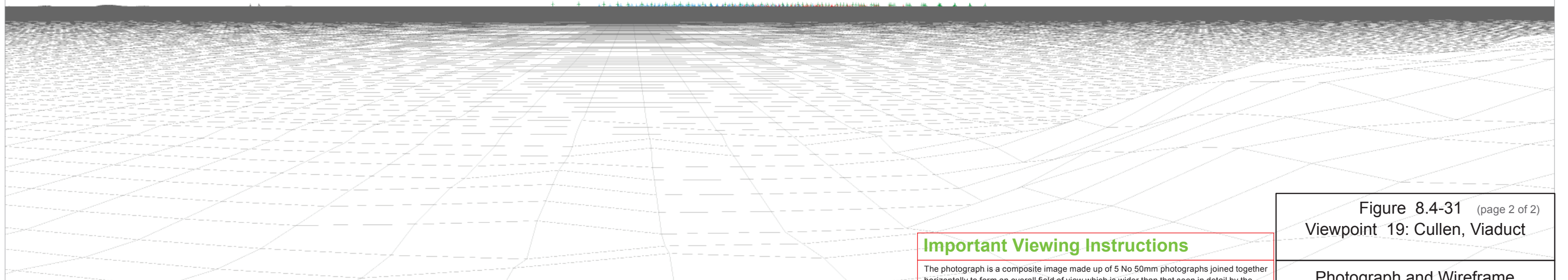
Buolfrulich (76.58 km)

Beatrice Demo (47.45 km)

MacColl (42.87 km)

Stevenson

Telford



Computer generated wireframe showing the proposed developments Telford (Red), Stevenson (Blue) and MacColl (Green) and other operational wind farm turbines in black

Reproduced from Ordnance Survey Landform Profile digital terrain height data © Crown Copyright 2012. All rights reserved. Licence Number 0100034870

Important Viewing Instructions

The photograph is a composite image made up of 5 No 50mm photographs joined together horizontally to form an overall field of view which is wider than that seen in detail by the human eye. For correct perspective viewing, these images must be viewed at an exact distance of 314 mm with one eye whilst curving the image in and exact arc of 72 degrees. This image should only be assessed in the real landscape from the same viewpoint.

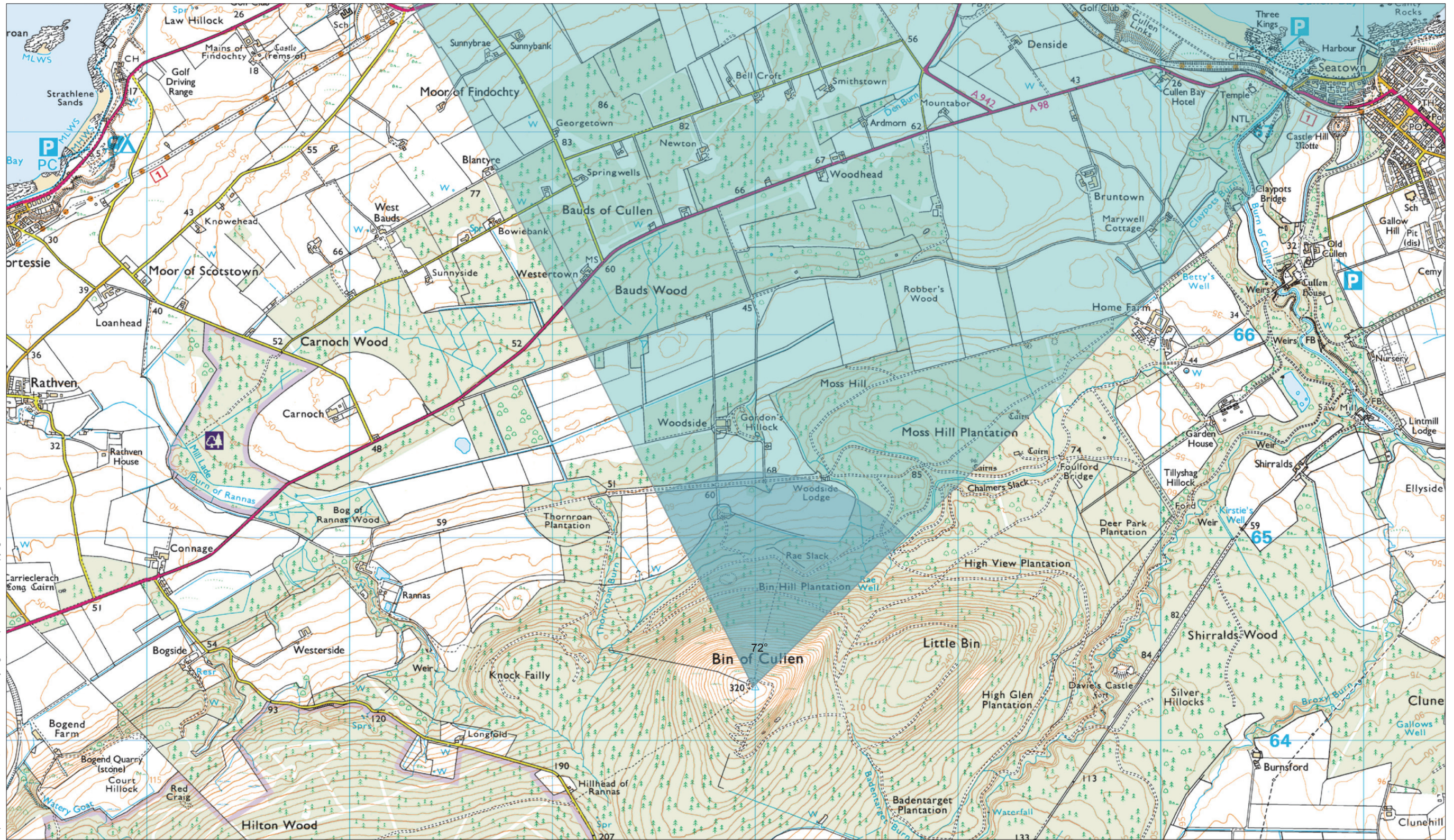
Figure 8.4-31 (page 2 of 2)
Viewpoint 19: Cullen, Viaduct

Photograph and Wireframe

Layout Scenario 4c

© COPYRIGHT STATEMENT: Moray Offshore Renewables Ltd © 2012. This document is the property of contractors and sub-contractors and shall not be reproduced nor transmitted without prior written approval.

Reproduced from 1:25,000 Ordnance Survey digital map data © Crown Copyright 2012. All rights reserved. Licence Number 0100031673



Viewpoint 20: Bin Hill

OSGB Grid Reference: 347989 E 864267 N

Distance to nearest turbine: 45.61 km

AOD: c 320 m

View taken from summit of Bin Hill near trig point



Moray Offshore Renewables Ltd

Scale in metres: 1: 20,000



Geodetic Parameters: WGS84 UTM Zone 30N

Produced: LT
Reviewed: SM
Approved: SM



Date: 09/07/2012 Revision: B

Ref: 8460001-PPW0201-OPE-MAP-079

Figure 8.4-32 (page 1 of 2)

Viewpoint 20: Bin Hill
Location

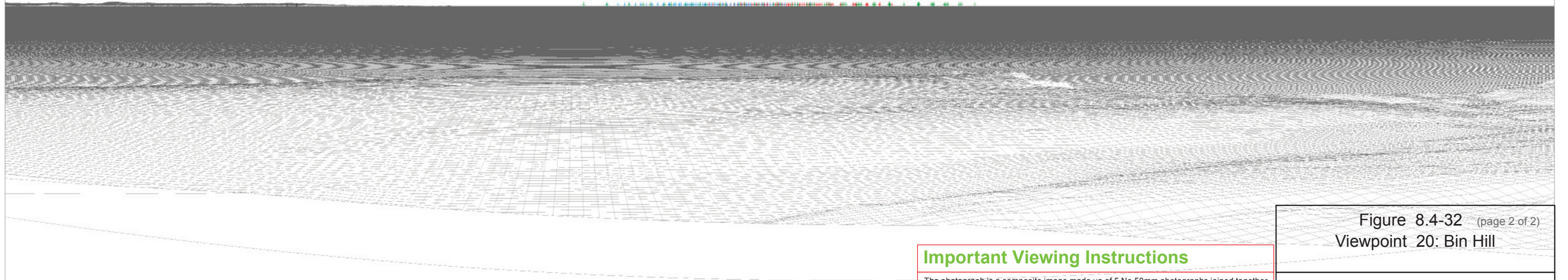
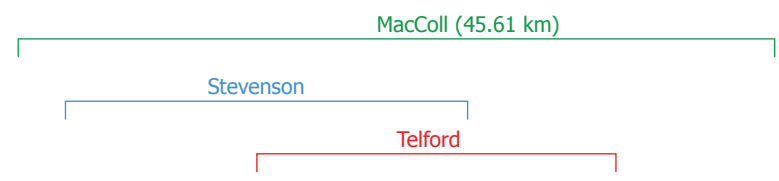
Moray Offshore
Renewables Ltd



Existing view from Bin Hill Distance to nearest turbine: 45.61 km (MacColl) Camera: Canon EOS 5D Mark II Focal Length: 50mm Horizontal Field of View: 72 degrees Camera Height: 1.5m Date: 25/09/11 Time: 13:32

Buolfruch (77.83 km)
□

Beatrice Demo (49.42 km)
□
Camster (84.59 km)
□



Computer generated wireframe showing the proposed developments Telford (Red), Stevenson (Blue) and MacColl (Green) and other operational wind farm turbines in black

Reproduced from Ordnance Survey Landform Profile digital terrain height data © Crown Copyright 2012. All rights reserved. Licence Number 0100034870

Important Viewing Instructions

The photograph is a composite image made up of 5 No 50mm photographs joined together horizontally to form an overall field of view which is wider than that seen in detail by the human eye. For correct perspective viewing, these images must be viewed at an exact distance of 314 mm with one eye whilst curving the image in and exact arc of 72 degrees. This image should only be assessed in the real landscape from the same viewpoint.

Figure 8.4-32 (page 2 of 2)
Viewpoint 20: Bin Hill

Photograph and Wireframe

Layout Scenario 4c

© COPYRIGHT STATEMENT: Moray Offshore Renewables Ltd © 2012. This document is the property of contractors and sub-contractors and shall not be reproduced nor transmitted without prior written approval.

Reproduced from 1:25,000 Ordnance Survey digital map data © Crown Copyright 2012. All rights reserved. Licence Number 0100031673



Viewpoint 21: Findlater Castle

OSGB Grid Reference: 354169 E 867086 N

Distance to nearest turbine: 43.21 km

AOD: c 55 m

View taken adjacent to viewpoint and information point for Findlater Castle.



Moray Offshore Renewables Ltd

Scale in metres: 1: 20,000



Geodetic Parameters: WGS84 UTM Zone 30N

Produced: LT

Reviewed: SM

Approved: SM

Date: 09/07/2012

Revision: B

Ref: 8460001-PPW0201-OPE-MAP-080



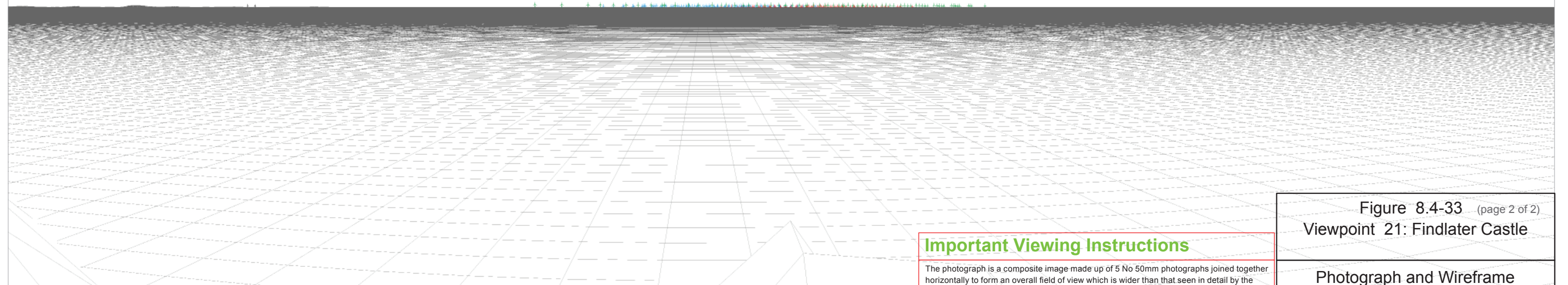
Figure 8.4-33 (page 1 of 2)

**Viewpoint 21: Findlater Castle
Location**

**Moray Offshore
Renewables Ltd**



Existing view from Findlater Castle Distance to nearest turbine: 43.21 km (MacColl) Camera: Canon EOS 5D Mark II Focal Length: 50mm Horizontal Field of View: 72 degrees Camera Height: 1.5m Date: 06/09/11 Time: 12:54



Computer generated wireframe showing the proposed developments Telford (Red), Stevenson (Blue) and MacColl (Green) and other operational wind farm turbines in black

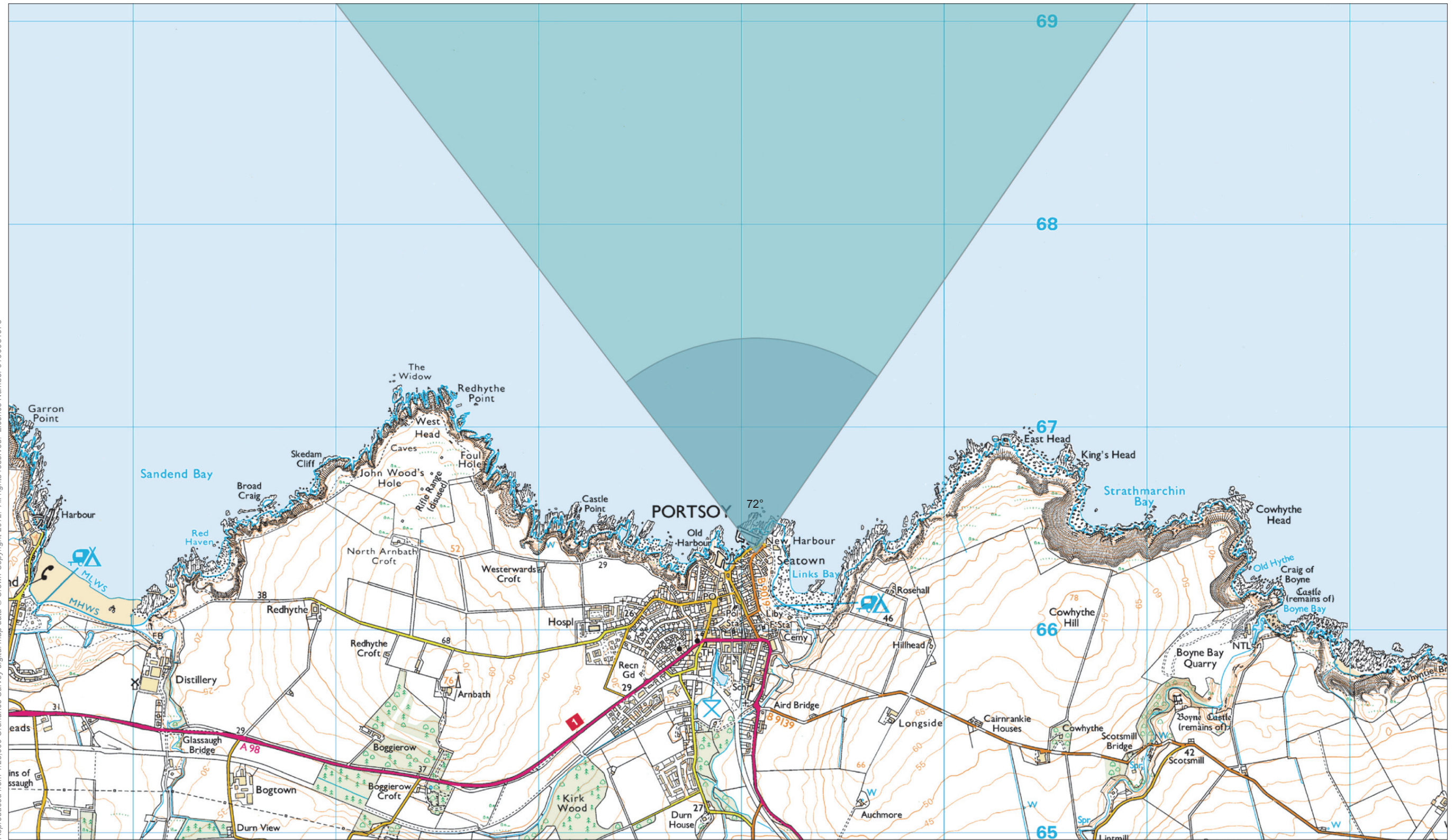
Important Viewing Instructions

The photograph is a composite image made up of 5 No 50mm photographs joined together horizontally to form an overall field of view which is wider than that seen in detail by the human eye. For correct perspective viewing, these images must be viewed at an exact distance of 314 mm with one eye whilst curving the image in and exact arc of 72 degrees. This image should only be assessed in the real landscape from the same viewpoint.

Figure 8.4-33 (page 2 of 2)
Viewpoint 21: Findlater Castle
Photograph and Wireframe
Layout Scenario 4c

Reproduced from Ordnance Survey Landform Profile digital terrain height data © Crown Copyright 2012. All rights reserved. Licence Number 0100034870

Reproduced from 1:25,000 Ordnance Survey digital map data © Crown Copyright 2012. All rights reserved. Licence Number 0100031673



Viewpoint 22: Portsoy

OSGB Grid Reference: 359071 E 866382 N

Distance to nearest turbine: 44.83 km

AOD: c 11 m

View taken from grassy area between Shore Street and Schoolhedry Street adjacent to bench.



Moray Offshore Renewables Ltd

Scale in metres: 1: 20,000



Geodetic Parameters: WGS84 UTM Zone 30N

Produced: LT

Reviewed: SM

Approved: SM

Date: 09/07/2012

Revision: B

Ref: 8460001-PPW0201-OPE-MAP-081



Figure 8.4-34 (page 1 of 2)

Viewpoint 22: Portsoy
Location

Moray Offshore
Renewables Ltd



Existing view from Portsoy

Distance to nearest turbine: 44.83 km (MacColl)

Camera: Canon EOS 5D Mark II

Focal Length: 50mm

Horizontal Field of View: 72 degrees

Camera Height: 1.5m

Date: 06/09/11

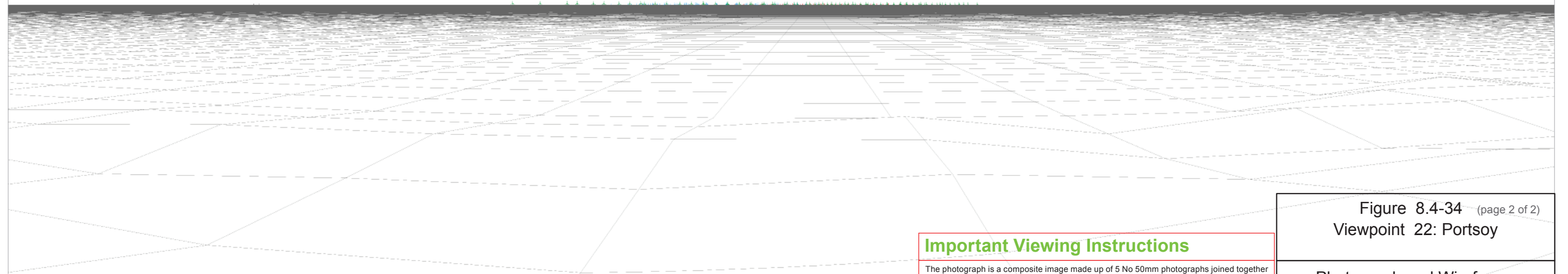
Time: 12:26

Beatrice Demo (51.07 km)
□

MacColl (44.83 km)

Stevenson

Telford



Computer generated wireframe showing the proposed developments Telford (Red), Stevenson (Blue) and MacColl (Green) and other operational wind farm turbines in black

Reproduced from Ordnance Survey Landform Profile digital terrain height data © Crown Copyright 2012. All rights reserved. Licence Number 0100034870

Important Viewing Instructions

The photograph is a composite image made up of 5 No 50mm photographs joined together horizontally to form an overall field of view which is wider than that seen in detail by the human eye. For correct perspective viewing, these images must be viewed at an exact distance of 314 mm with one eye whilst curving the image in and exact arc of 72 degrees. This image should only be assessed in the real landscape from the same viewpoint.

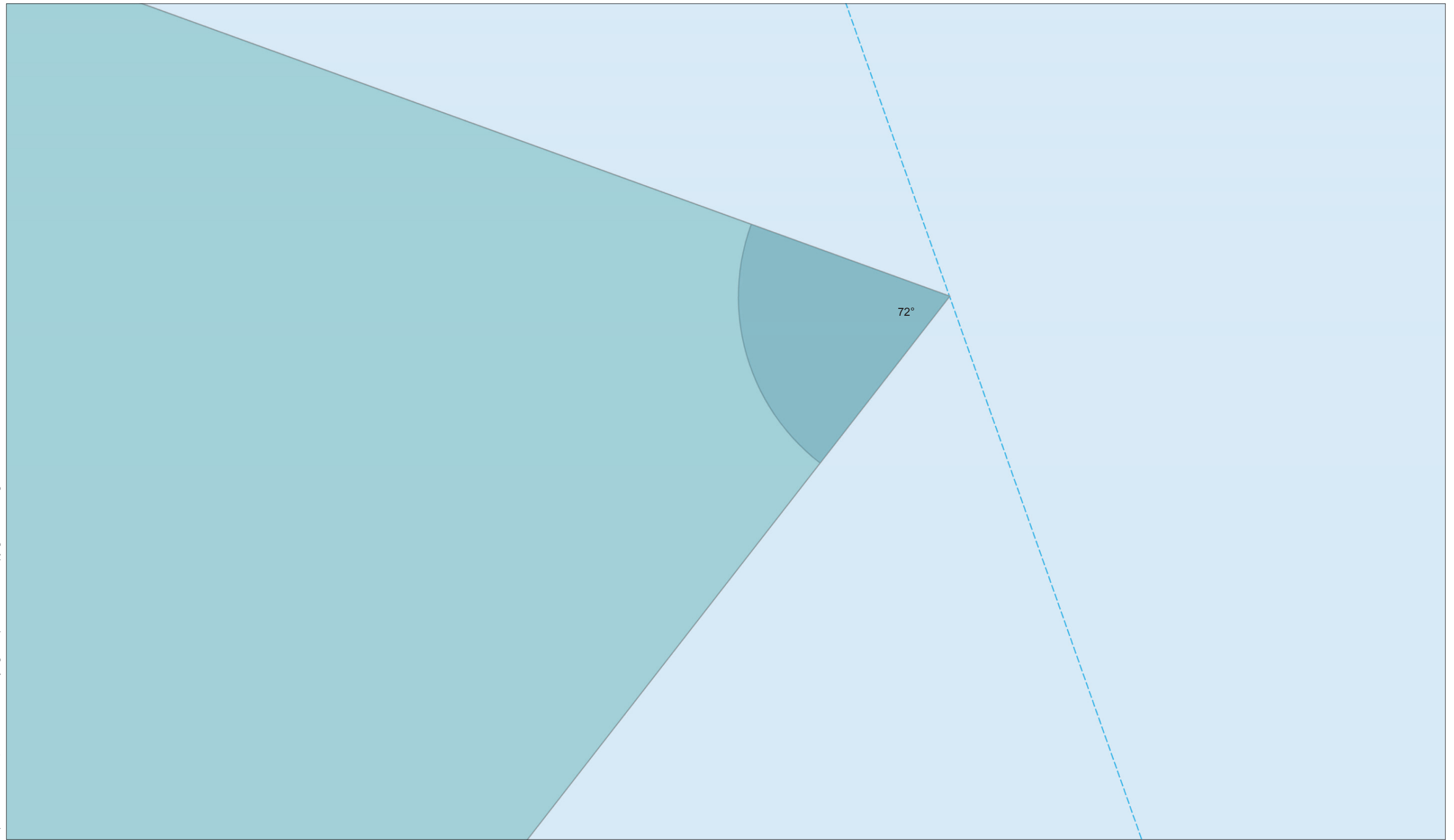
Figure 8.4-34 (page 2 of 2)
Viewpoint 22: Portsoy

Photograph and Wireframe

Layout Scenario 4c

© COPYRIGHT STATEMENT: Moray Offshore Renewables Ltd © 2012. This document is the property of contractors and sub-contractors and shall not be reproduced nor transmitted without prior written approval.

Reproduced from 1:25,000 Ordnance Survey digital map data © Crown Copyright 2012. All rights reserved. Licence Number 0100031673



Viewpoint 23: Ferry Route (Kirkwall to Aberdeen) 1

OSGB Grid Reference: 388911 E 931385 N

Distance to nearest turbine: 24.84 km

AOD: c 0 m

Wireline view taken from Kirkwall to Aberdeen ferry route to east of proposed developments



Moray Offshore Renewables Ltd

Scale in metres: 1: 20,000



Geodetic Parameters: WGS84 UTM Zone 30N

Produced: LT
Reviewed: SM
Approved: SM



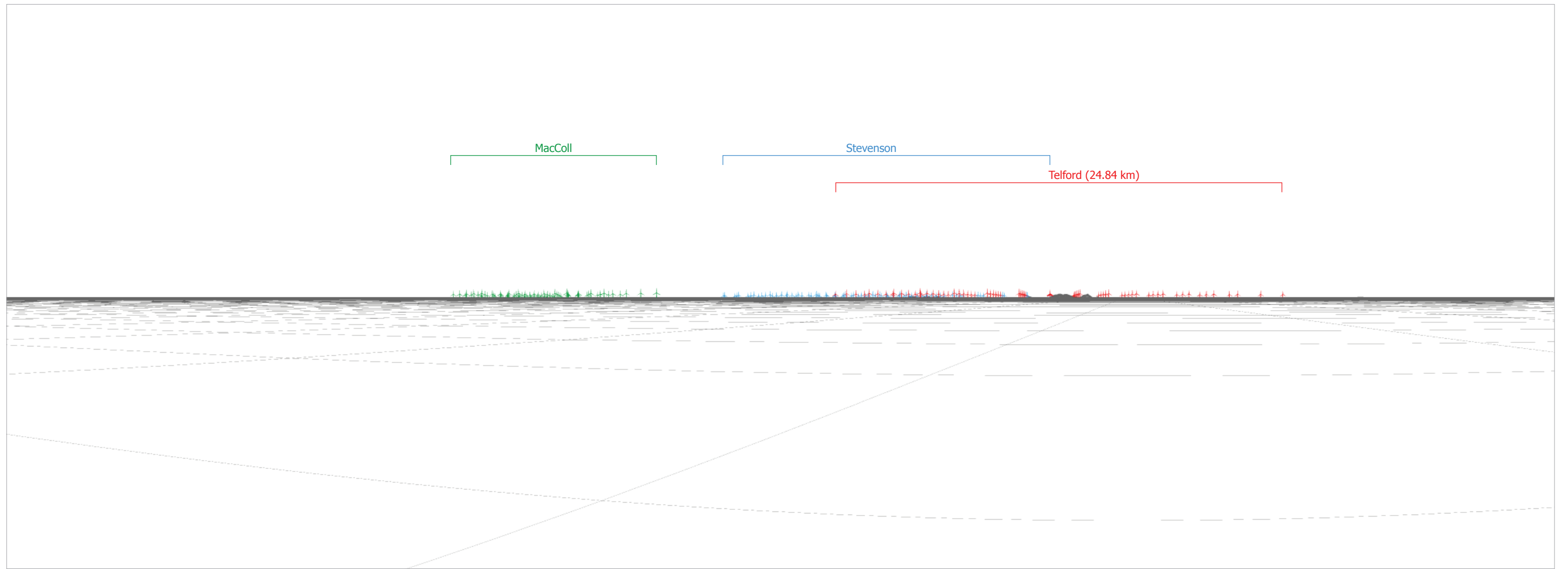
Date: 09/07/2012

Revision: B

Ref: 8460001-PPW0201-OPE-MAP-082

Figure 8.4-35 (page 1 of 2)
Viewpoint 23: Ferry Route
(Kirkwall to Aberdeen) 1 Location

Moray Offshore
Renewables Ltd



Computer generated wireframe showing the proposed developments Telford (Red), Stevenson (Blue) and MacColl (Green) and other operational wind farm turbines in black

Distance to nearest turbine: 24.84 km (Telford)

Horizontal Field of View: 72 degrees

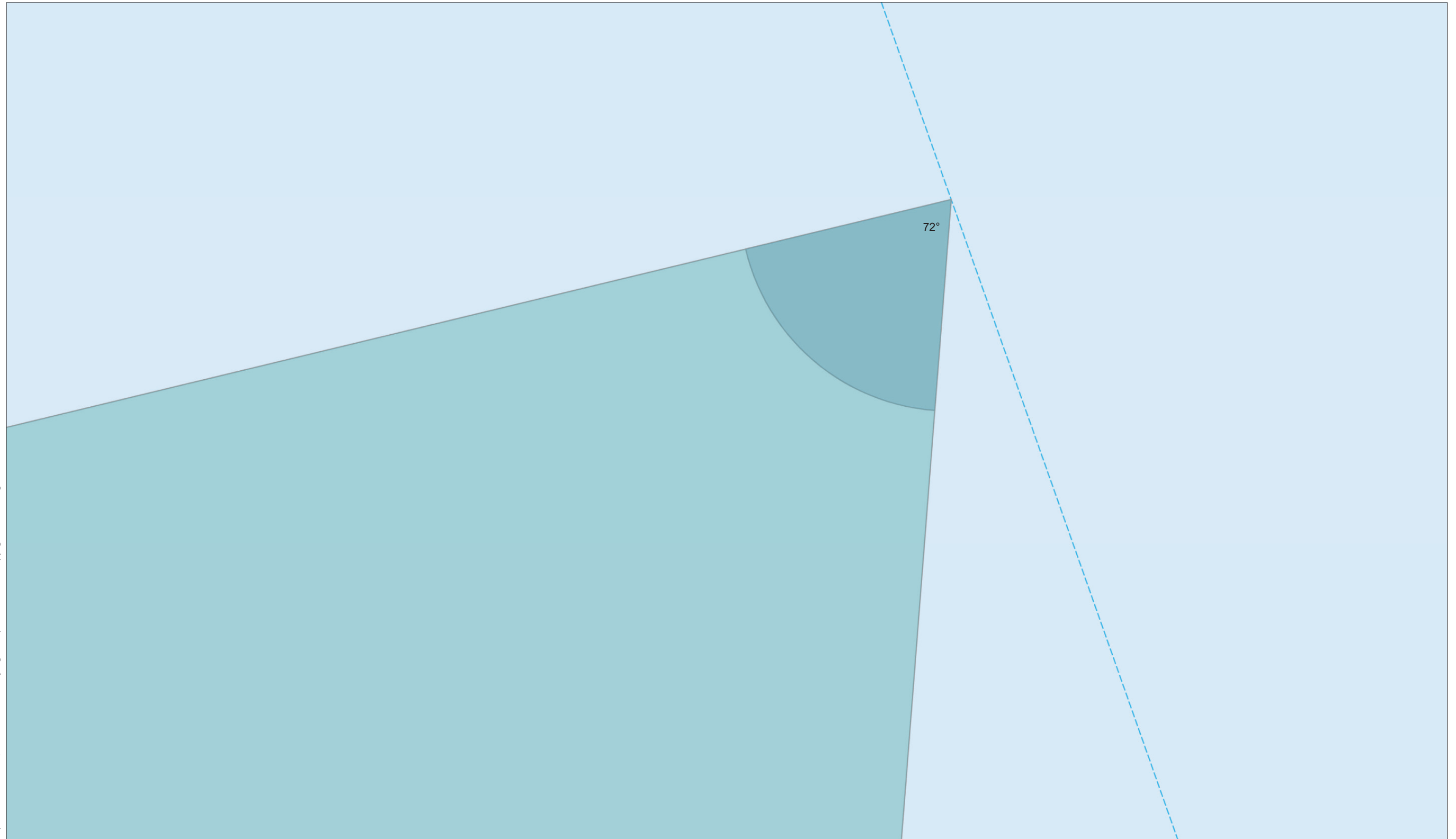
Important Viewing Instructions

The photograph is a composite image made up of 5 No 50mm photographs joined together horizontally to form an overall field of view which is wider than that seen in detail by the human eye. For correct perspective viewing, these images must be viewed at an exact distance of 314 mm with one eye whilst curving the image in and exact arc of 72 degrees. This image should only be assessed in the real landscape from the same viewpoint.

Figure 8.4-35 (page 2 of 2)
Viewpoint 24: Ferry Route
(Kirkwall to Aberdeen) 1 Location

Wireframe

Layout Scenario 4c



Viewpoint 24: Ferry Route (Kirkwall to Aberdeen) 2

OSGB Grid Reference: 382009 E 950868 N

Distance to nearest turbine: 28.58 km

AOD: c 0 m

Wireline view taken from Kirkwall to Aberdeen ferry route to north east of proposed developments

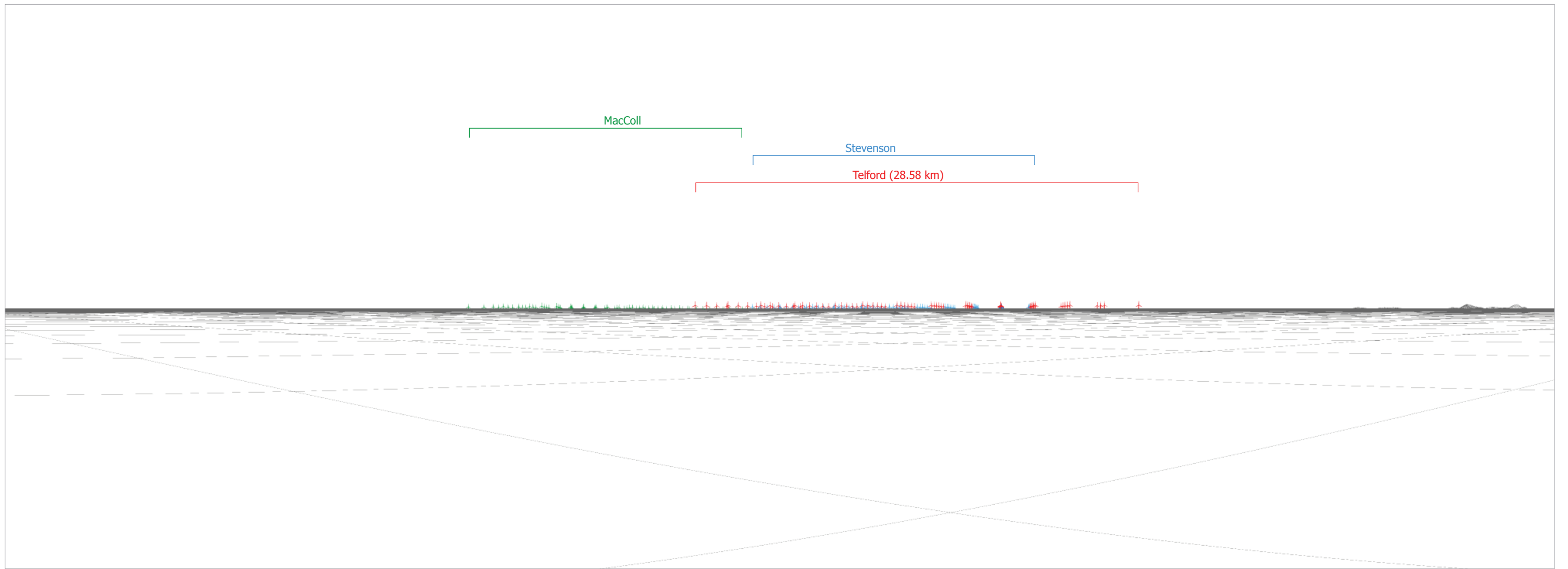


Moray Offshore Renewables Ltd

Scale in metres: 1: 20,000		
Geodetic Parameters: WGS84 UTM Zone 30N		
Produced: LT		
Reviewed: SM		
Approved: SM		
Date: 09/07/2012	Revision: B	
Ref: 8460001-PPW0201-OPE-MAP-083		

Figure 8.4-36 (page 1 of 2)
Viewpoint 25: Ferry Route
(Kirkwall to Aberdeen) 2 Location

**Moray Offshore
Renewables Ltd**



Computer generated wireframe showing the proposed developments Telford (Red), Stevenson (Blue) and MacColl (Green) and other operational wind farm turbines in black

Distance to nearest turbine: 28.58 km (Telford)

Horizontal Field of View: 72 degrees

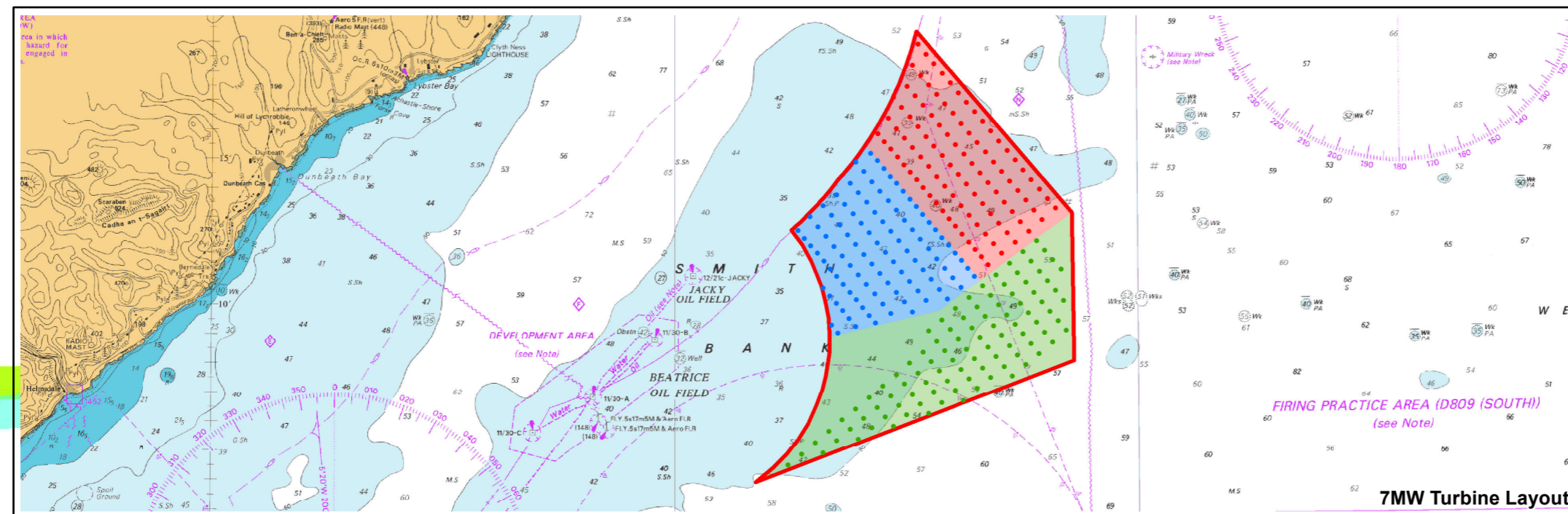
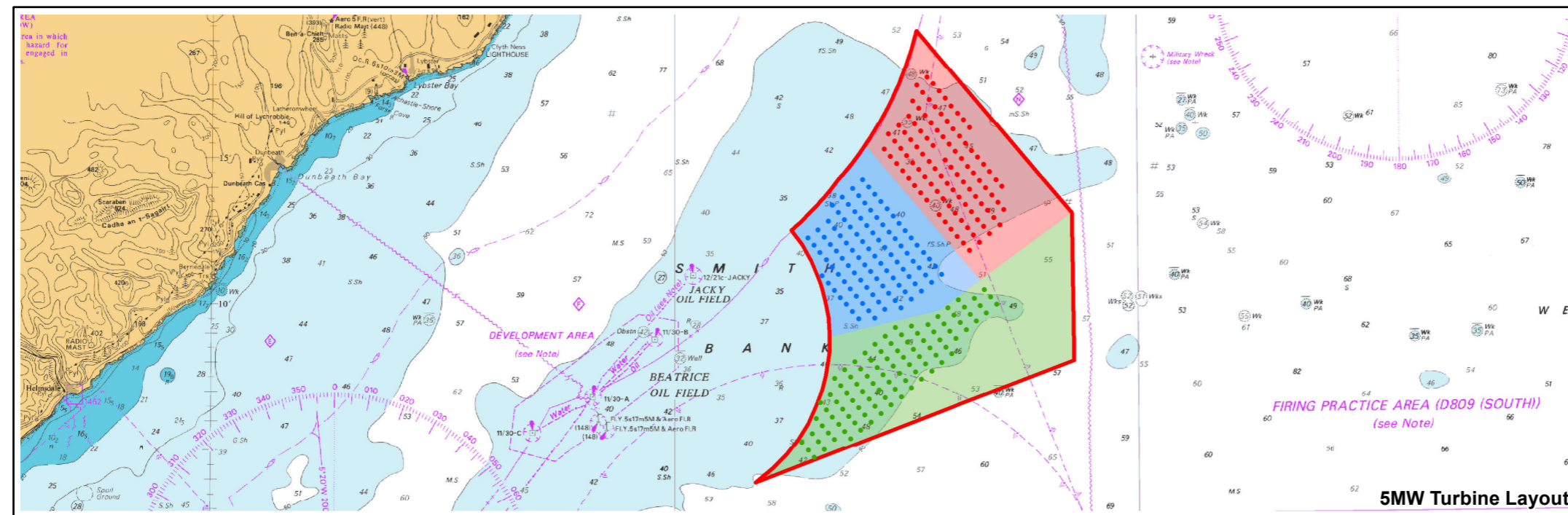
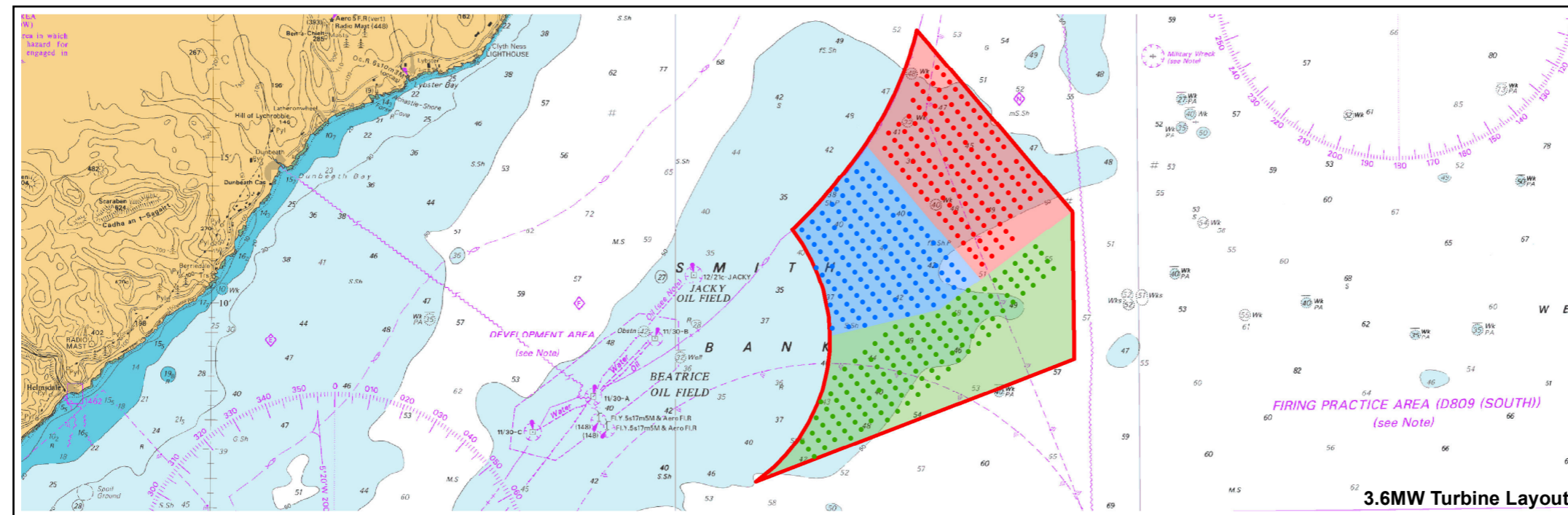
Important Viewing Instructions

The photograph is a composite image made up of 5 No 50mm photographs joined together horizontally to form an overall field of view which is wider than that seen in detail by the human eye. For correct perspective viewing, these images must be viewed at an exact distance of 314 mm with one eye whilst curving the image in and exact arc of 72 degrees. This image should only be assessed in the real landscape from the same viewpoint.

Figure 8.4-36 (page 2 of 2)
Viewpoint 25: Ferry Route
(Kirkwall to Aberdeen) 2 Location

Wireframe

Layout Scenario 4c



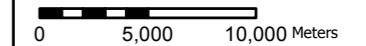
Moray Offshore Renewables Ltd

KEY

Secondary Assessment Layouts:

- Telford Layout
- Stevenson Layout
- MacColl Layout
- Telford Development Area
- Stevenson Development Area
- MacColl Development Area
- Eastern Development Area

Horizontal Scale: 1:350,000



Geodetic Parameters: WGS84 UTM Zone 30N

Produced: TR
Reviewed: SM
Approved: SM

Date: 05/06/2012 Revision: B

REF: 8460001-PPW0201-OPE-MAP-084

Figure 8.4-37
Rochdale Envelope -
Secondary Assessment

Moray Offshore
Renewables Ltd