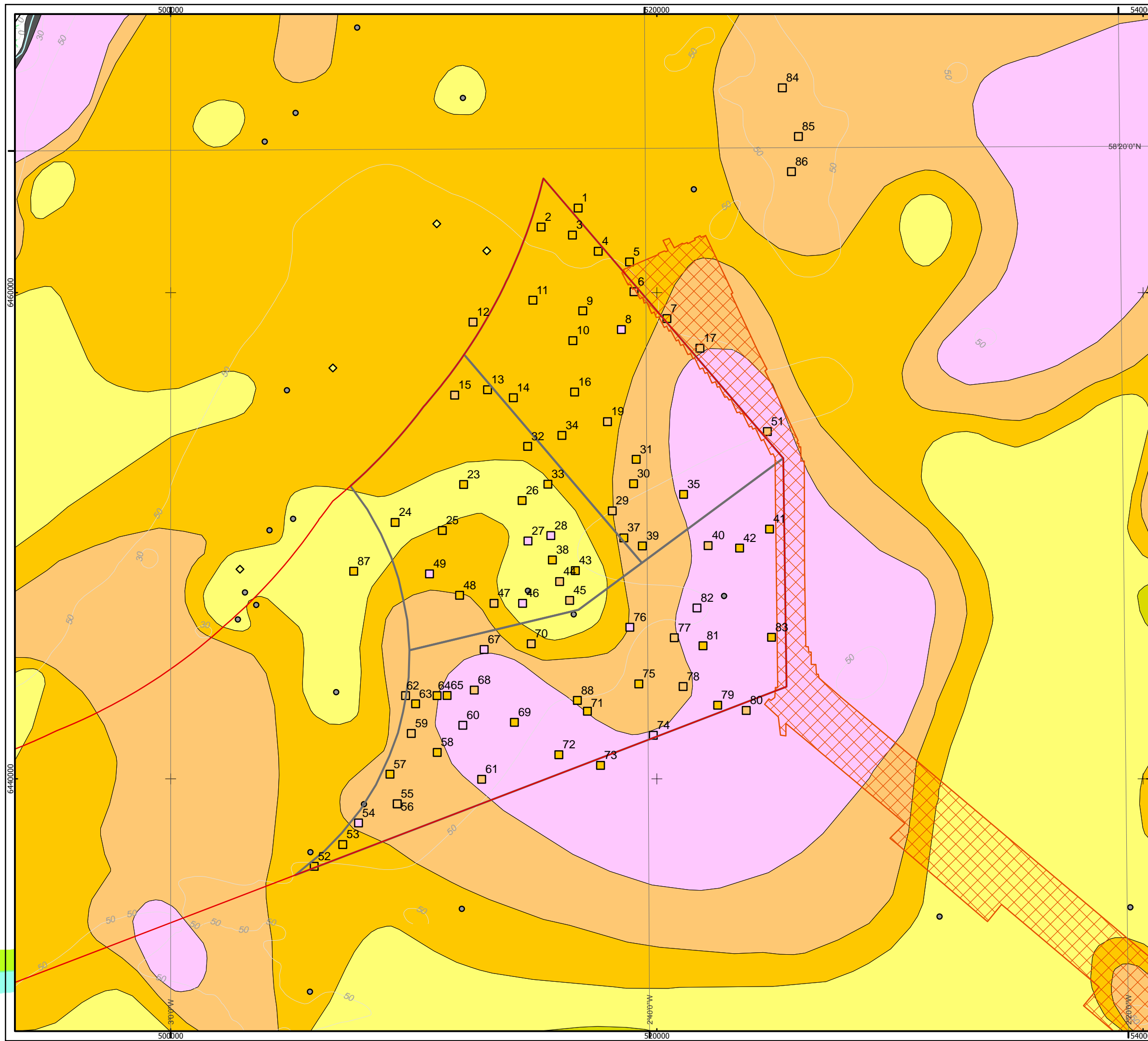


© ABPmer, All rights reserved, 2012. Data: BGS data © Merc. All rights reserved; © British Crown & Seazone Solutions Ltd. All rights reserved. Products Licence No.012009.001  
 Moray Offshore Renewables Ltd © 2012. This document is the property of contractors and sub-contractors and shall not be reproduced nor transmitted without prior written approval.



**Moray Offshore Renewables Ltd**

- KEY**
- MORL Zone Boundary
  - Offshore Export Cable Route
  - Windfarm Boundaries
  - BGS Grab Samples
  - Emu Grab Samples (Folk)**
  - Gravelly Sand
  - Sandy Gravel
  - Slightly Gravelly Sand
  - Partrac Grab Sample (Folk)**
  - Sand
  - Gravelly Sand
  - Muddy Sandy Gravel
  - Muddy Sand
  - Sandy Gravel
  - Slightly Gravelly Sand
  - Sand
  - Rock

Horizontal Scale: 1:150,000 A3 Chart

Geodetic Parameters: WGS84 UTM Zone 30N

Produced: MCE  
 Reviewed: NMW  
 Approved: PH

Date: 04/05/2012 Revision: B  
 REF: 8460001-PPW0201-ABP-MAP-025

**Fig 3.5-1 - Seabed Sediments within and near the Application Site**

Moray Offshore Renewables Ltd

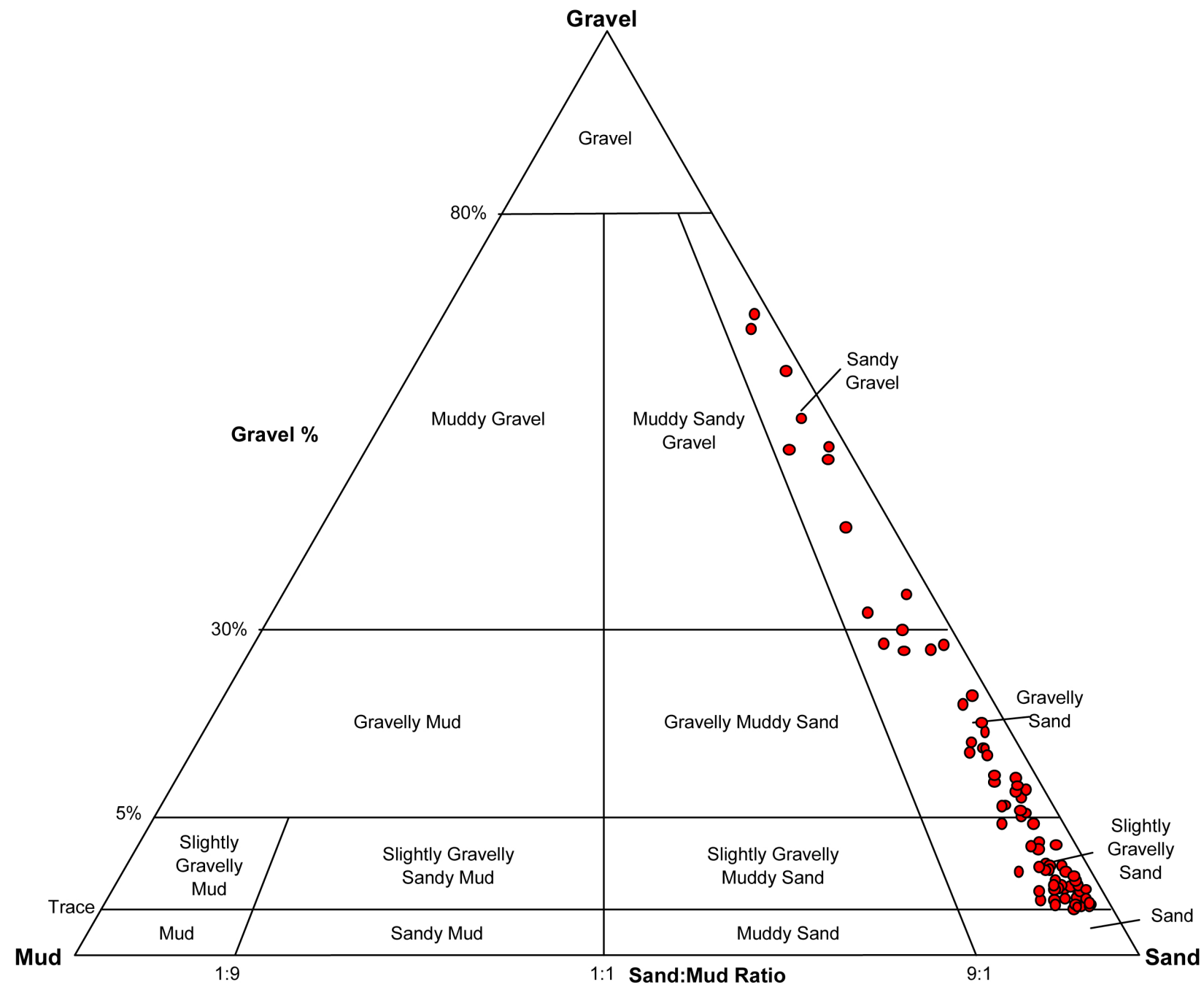
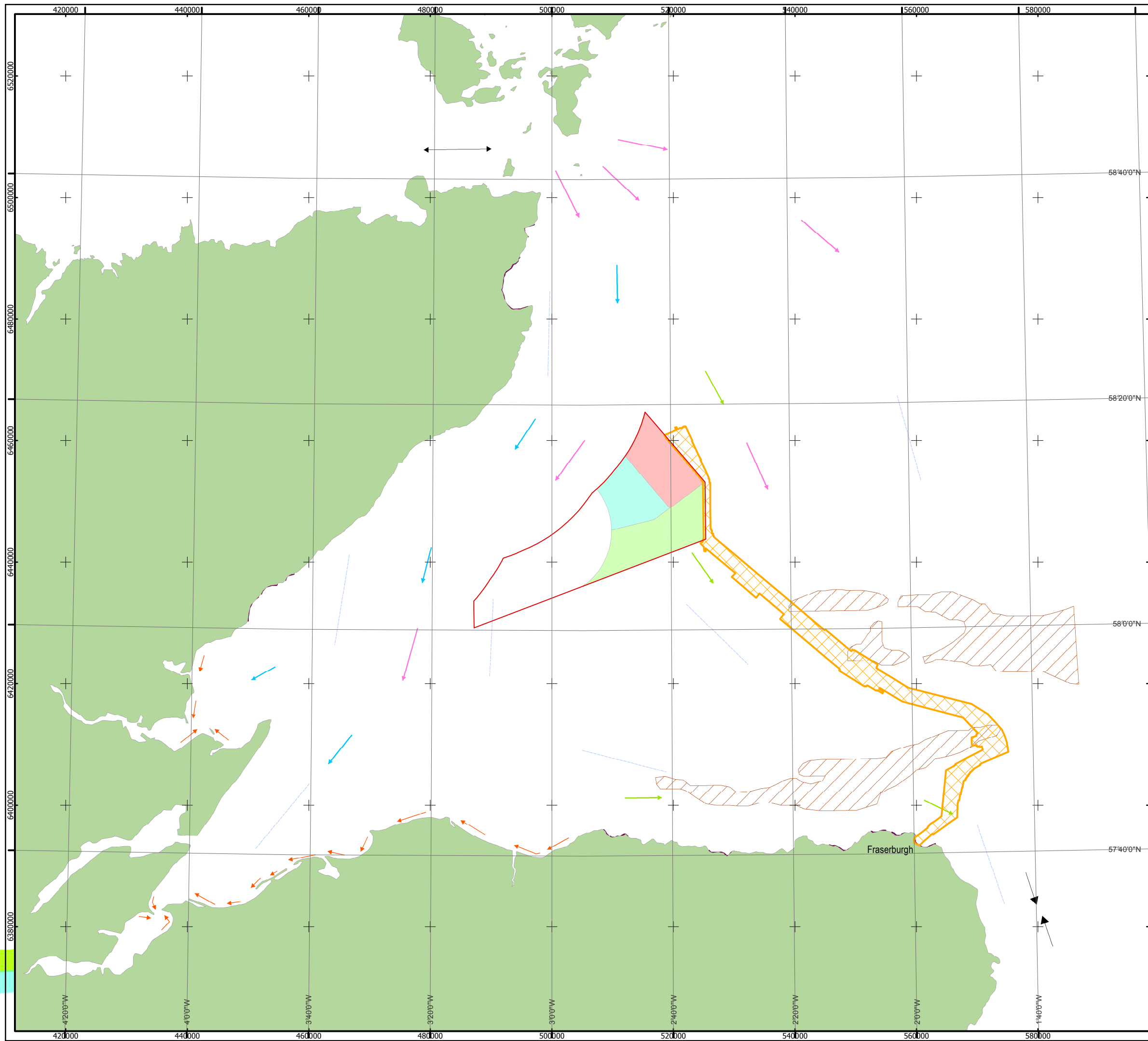


Fig 3.5-2- MORL EDA  
Sediment Samples on the  
Folk (1954) Classification

© ABPmer. All rights reserved, 2012. Data source: Reid and McManus (1987); Ramsey and Brampton (2000)  
 Moray Offshore Renewables Ltd © 2012. This document is the property of contractors and sub-contractors and shall not be reproduced nor transmitted without prior written approval.



**Moray Offshore Renewables Ltd**

**KEY**

- MORL Zone Boundary
- Offshore Export Cable Route
- MacColl Windfarm
- Stevenson Windfarm
- Telford Windfarm
- Offshore Sediment Sink

**Sediment Transport**

**Summary**

- Bedload Convergence
- Bedload Parting
- Net Longshore Drift
- Sediment Transport Path
- Sediment Transport Path (probable)
- Semi-independent Beach Unit
- Shelly Carbonate Path
- Tidal Current Ggeneral Orientation

Horizontal Scale: 1:600,000 A3 Chart  
 0 15,000 30,000 Metres

Geodetic Parameters: WGS84 UTM Zone 30N

Produced: MCE  
 Reviewed: NMW  
 Approved: PH

Date: 04/05/2012 Revision: A

REF: 8460001-PPW0201-ABP-MAP-027

**Fig 6.2-1 - Bedload and Longshore Sediment Transport in the Moray Firth**

Moray Offshore Renewables Ltd