

Moray Offshore Renewables Ltd

KEY

- Turbine Layout Scenario 4c:
- Telford 7MW Turbines (204m)
 - Stevenson 7MW Turbines (204m)
 - MacColl 7MW Turbines (204m)
 - Eastern Development Area
 - 10km Distance Radii
 - 50km Study Area Boundary
 - Landscape Character *
 - △ Viewpoint Location **

- Coastal Character Areas
- 17 Lossiemouth to Burghead Coast
 - 18 Spey Bay
 - 19 Portgordon to Portnockie Coast

- Blade Tip ZTV (204m)
No. of Visible Turbines
- | | |
|------------|-------------|
| □ 0 | □ 101 - 150 |
| □ 1 - 50 | □ 151 - 200 |
| □ 51 - 100 | □ 201 - 216 |

Note:
* Landscape types listed in Figure 5.4.2
** Viewpoint locations listed in Figure 5.4.7

Horizontal Scale: 1:100,000 A3 Chart
0 2,500 5,000 Meters

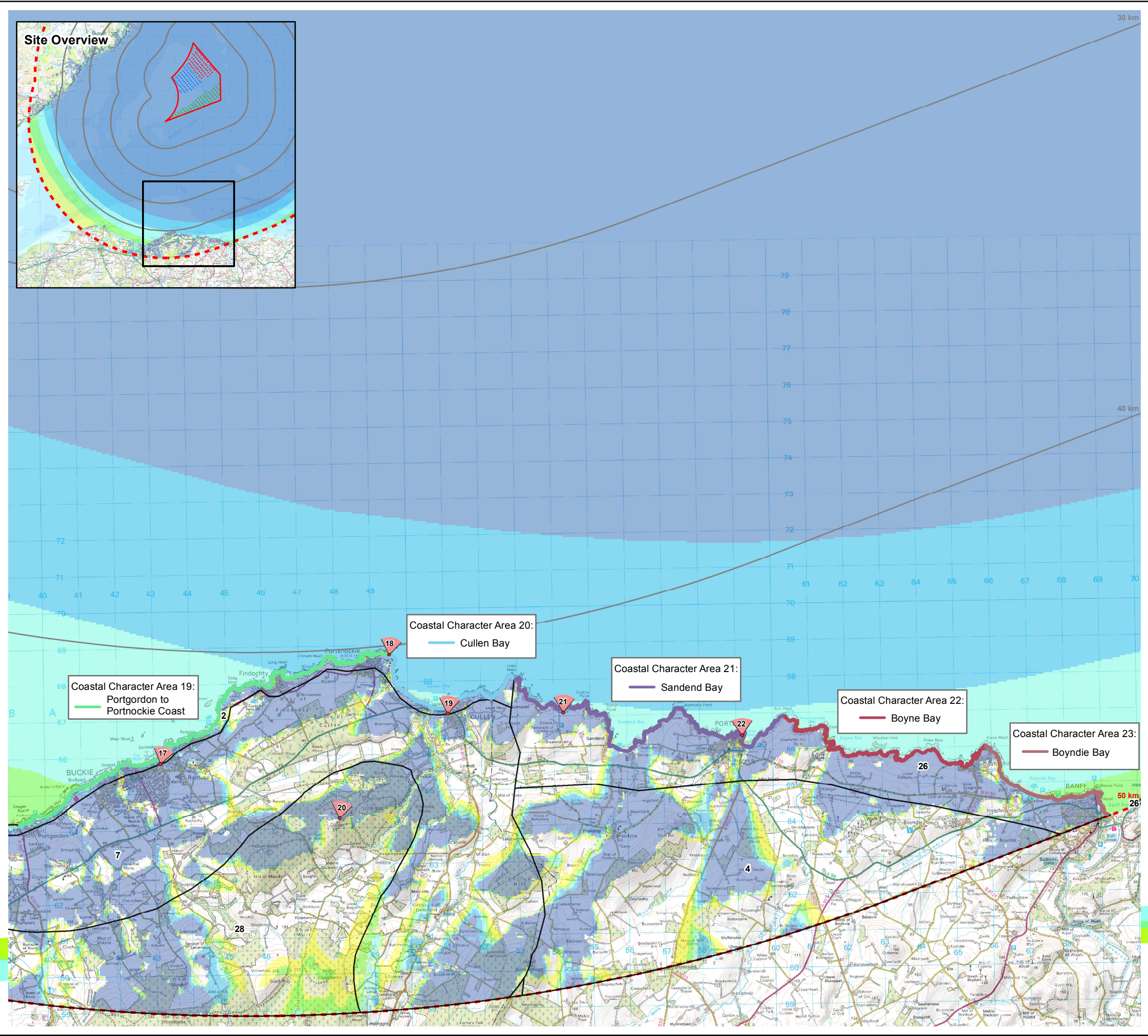
Geodetic Parameters: WGS84 UTM Zone 30N

Produced: LA
Reviewed: SM
Approved: SM

Date: 09/07/2012 Revision: B
REF: 8460001-PPW0201-OPE-MAP-036

**Figure 8.4-10d
Coastal Character Areas
with ZTV (Morayshire)**

Moray Offshore
Renewables Ltd



Moray Offshore Renewables Ltd

KEY

- Turbine Layout Scenario 4c:
- Telford 7MW Turbines (204m)
 - Stevenson 7MW Turbines (204m)
 - MacColl 7MW Turbines (204m)
 - Eastern Development Area
 - 10km Distance Radii
 - 50km Study Area Boundary
 - Landscape Character *
 - ▽ Viewpoint Location **

- Coastal Character Areas
- 19 Portgordon to Portnockie Coast
 - 20 Cullen Bay
 - 21 Sandend Bay
 - 22 Boyne Bay
 - 23 Boyndie Bay

- Blade Tip ZTV (204m)
No. of Visible Turbines
- | | |
|------------|-------------|
| □ 0 | □ 101 - 150 |
| □ 1 - 50 | □ 151 - 200 |
| □ 51 - 100 | □ 201 - 216 |

Note:
* Landscape types listed in Figure 5.4.2
** Viewpoint locations listed in Figure 5.4.7

Horizontal Scale: 1:100,000 A3 Chart
0 2,500 5,000 Meters

Geodetic Parameters: WGS84 UTM Zone 30N

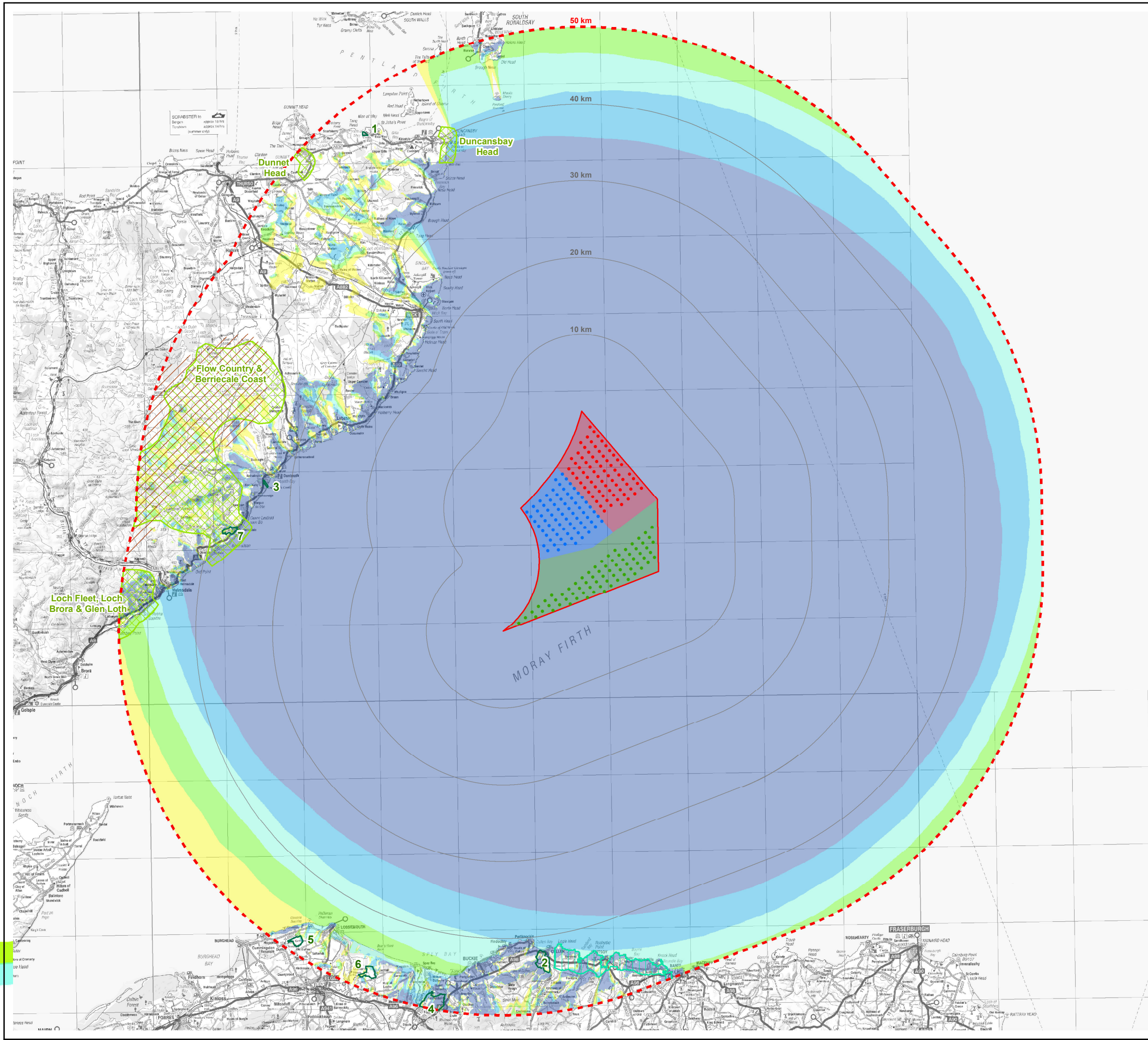
Produced: LA
Reviewed: SM
Approved: SM

Date: 09/07/2012 Revision: B
REF: 8460001-PPW0201-OPE-MAP-037

Figure 8.4-10e
Coastal Character Areas
with ZTV (Aberdeenshire)

Moray Offshore
Renewables Ltd

This map contains Ordnance Survey data © Crown copyright and database right, 2011. This document is the property of contractors and sub-contractors and shall not be reproduced nor transmitted without prior written approval. Moray Offshore Renewables Ltd © 2012.



Moray Offshore Renewables Ltd

- KEY**
- Turbine Layout Scenario 4c:
- Telford 7MW Turbines (204m)
 - Stevenson 7MW Turbines (204m)
 - MacColl 7MW Turbines (204m)
 - Telford Development Area
 - Stevenson Development Area
 - MacColl Development Area
 - Eastern Development Area
 - 10km Distance Radii
 - 50km Study Area Boundary
- Landscape Designations
- ▨ Search Area for Wild Land
 - ▨ Coastal Protection Zone
 - ▨ Area of Landscape Significance
 - ▨ Special Landscape Area
 - ▨ Garden & Designed Landscape

- 1 Castle of Mey
- 2 Cullen House
- 3 Dunbeath Castle
- 4 Gordon Castle
- 5 Gordonstoun
- 6 Innes House
- 7 Melssetter House

- Blade Tip ZTV (204m)
- No. of Visible Turbines
- 0
 - 1 - 50
 - 51 - 100
 - 101 - 150
 - 151 - 200
 - 201 - 216

Horizontal Scale: 1:475,000 A3 Chart
 0 10,000 20,000 Meters

Geodetic Parameters: WGS84 UTM Zone 30N

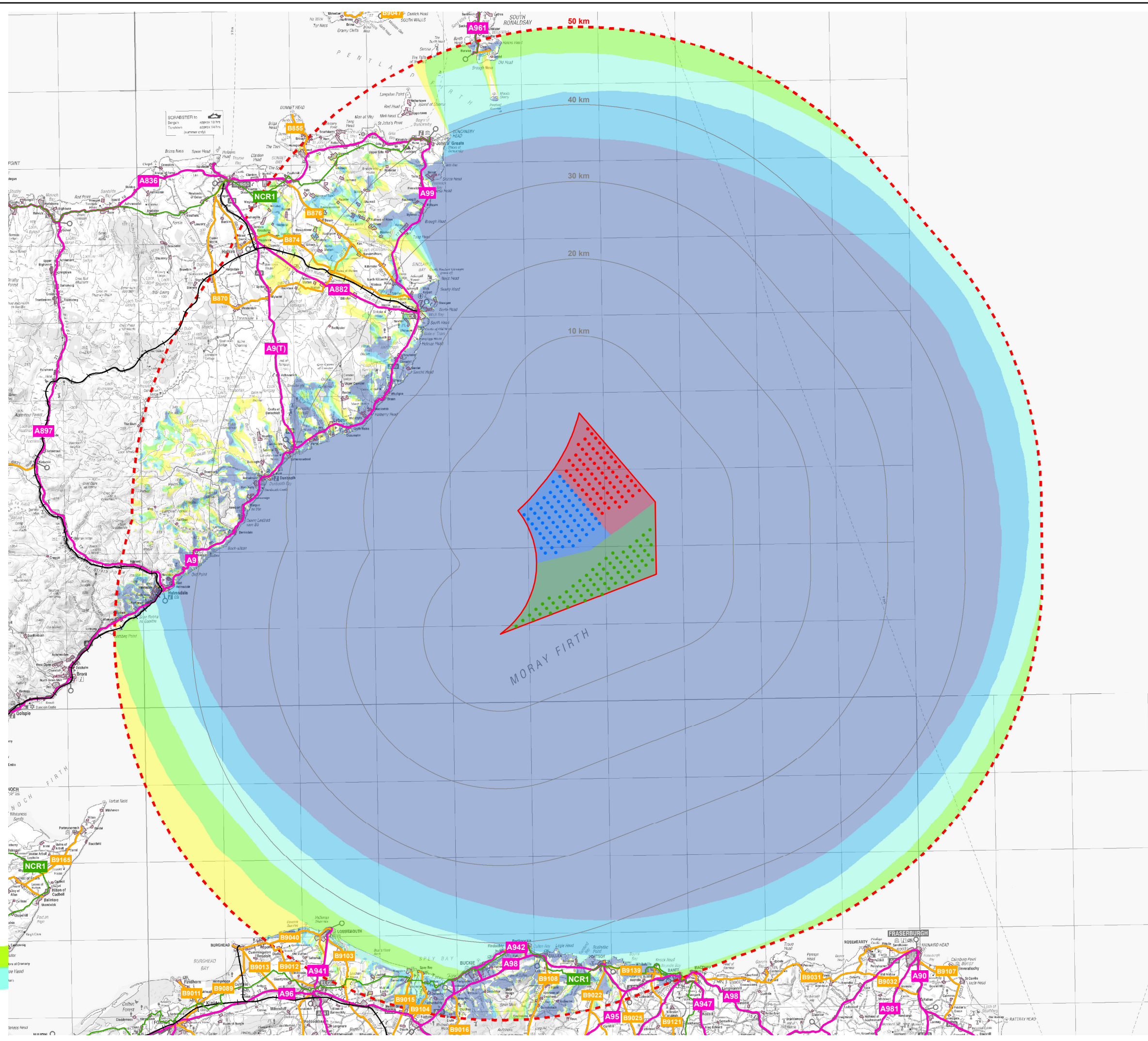
Produced: LA
 Reviewed: SM
 Approved: SM

Date: 09/07/2012 Revision: B
 REF: 8460001-PPW0201-OPE-MAP-038

Figure 8.4-11
Landscape Designations
with ZTV

Moray Offshore
 Renewables Ltd

This map contains Ordnance Survey data © Crown copyright and database right, 2011. This document is the property of contractors and sub-contractors and shall not be reproduced nor transmitted without prior written approval.



Moray Offshore Renewables Ltd

KEY

- Turbine Layout Scenario 4c:
- Telford 7MW Turbines (204m)
 - Stevenson 7MW Turbines (204m)
 - MacColl 7MW Turbines (204m)

- Telford Development Area
- Stevenson Development Area
- MacColl Development Area
- Eastern Development Zone
- 10km Distance Radii
- 50km Study Area Boundary

Principal Visual Receptors

- A Road
- B Road
- Railway
- National Cycle Route
- Urban Area

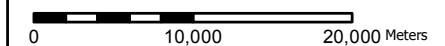
Blade Tip ZTV (204m)

No. of Visible Turbines

- 0
- 1 - 50
- 51 - 100
- 101 - 150
- 151 - 200
- 201 - 216

Horizontal Scale: 1:475,000

A3 Chart



Geodetic Parameters: WGS84 UTM Zone 30N

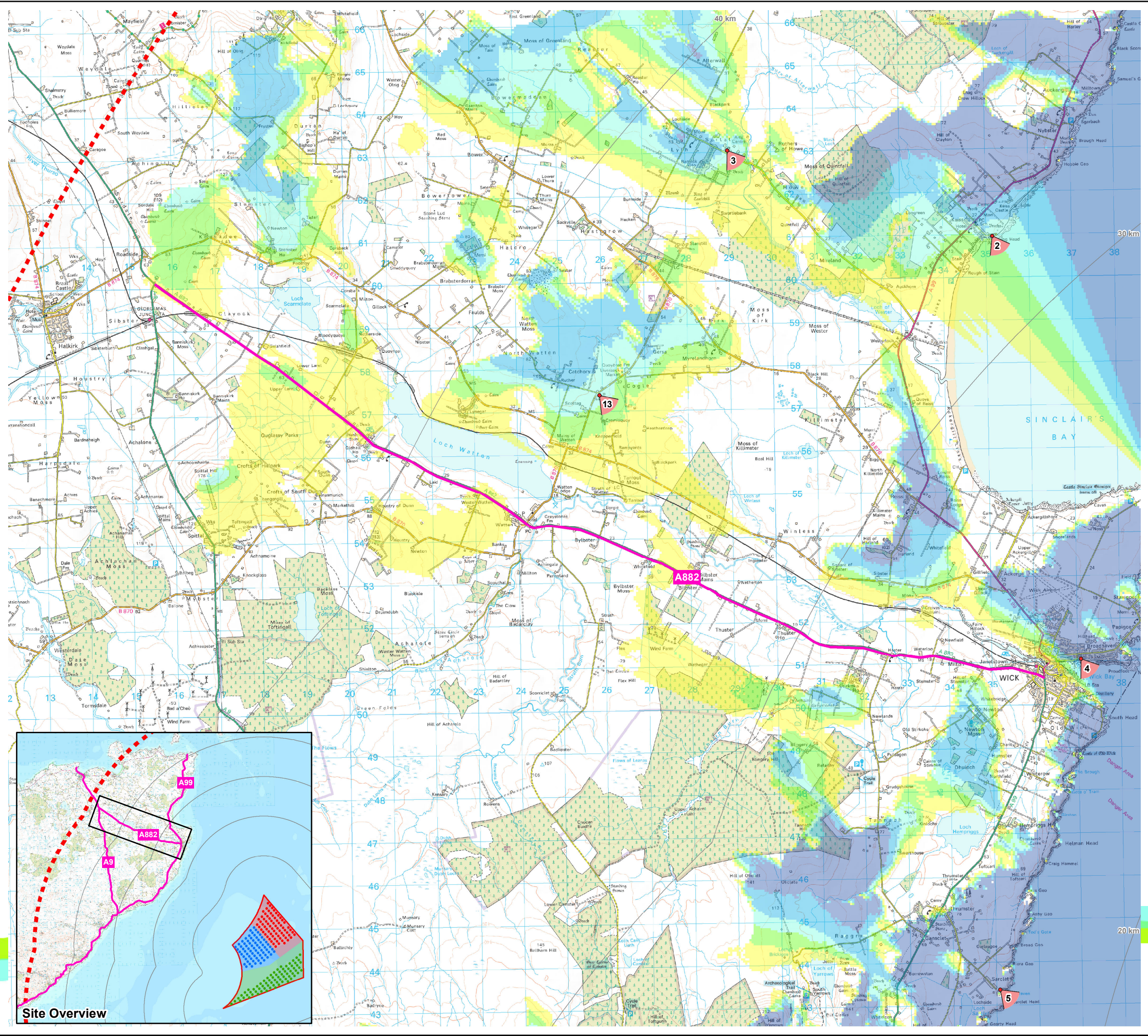
Produced: LA
Reviewed: SM
Approved: SM

Date: 09/07/2012 Revision: B

REF: 8460001-PPW0201-OPE-MAP-039

Figure 8.4-12
Visual Receptors with ZTV

Moray Offshore
Renewables Ltd



Moray Offshore Renewables Ltd

- KEY**
- Turbine Layout Scenario 4c:
- Telford 7MW Turbines (204m)
 - Stevenson 7MW Turbines (204m)
 - MacColl 7MW Turbines (204m)
 - Telford Development Area
 - Stevenson Development Area
 - MacColl Development Area
 - Eastern Development Area
 - 10km Distance Radii
 - 50km Study Area Boundary
 - ▽ Viewpoint Location
 - A882

- Blade Tip ZTV (204m)
No. of Visible Turbines
- 0
 - 1 - 50
 - 51 - 100
 - 101 - 150
 - 151 - 200
 - 201 - 216

Horizontal Scale: 1:85,000 A3 Chart
0 1,750 3,500 Meters

Geodetic Parameters: WGS84 UTM Zone 30N

Produced: LA
Reviewed: SM
Approved: SM

Date: 09/07/2012 Revision: B
REF: 8460001-PPW0201-OPE-MAP-040

Figure 8.4-12a
Visual Receptors with ZTV
- A882

Moray Offshore Renewables Ltd