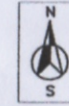


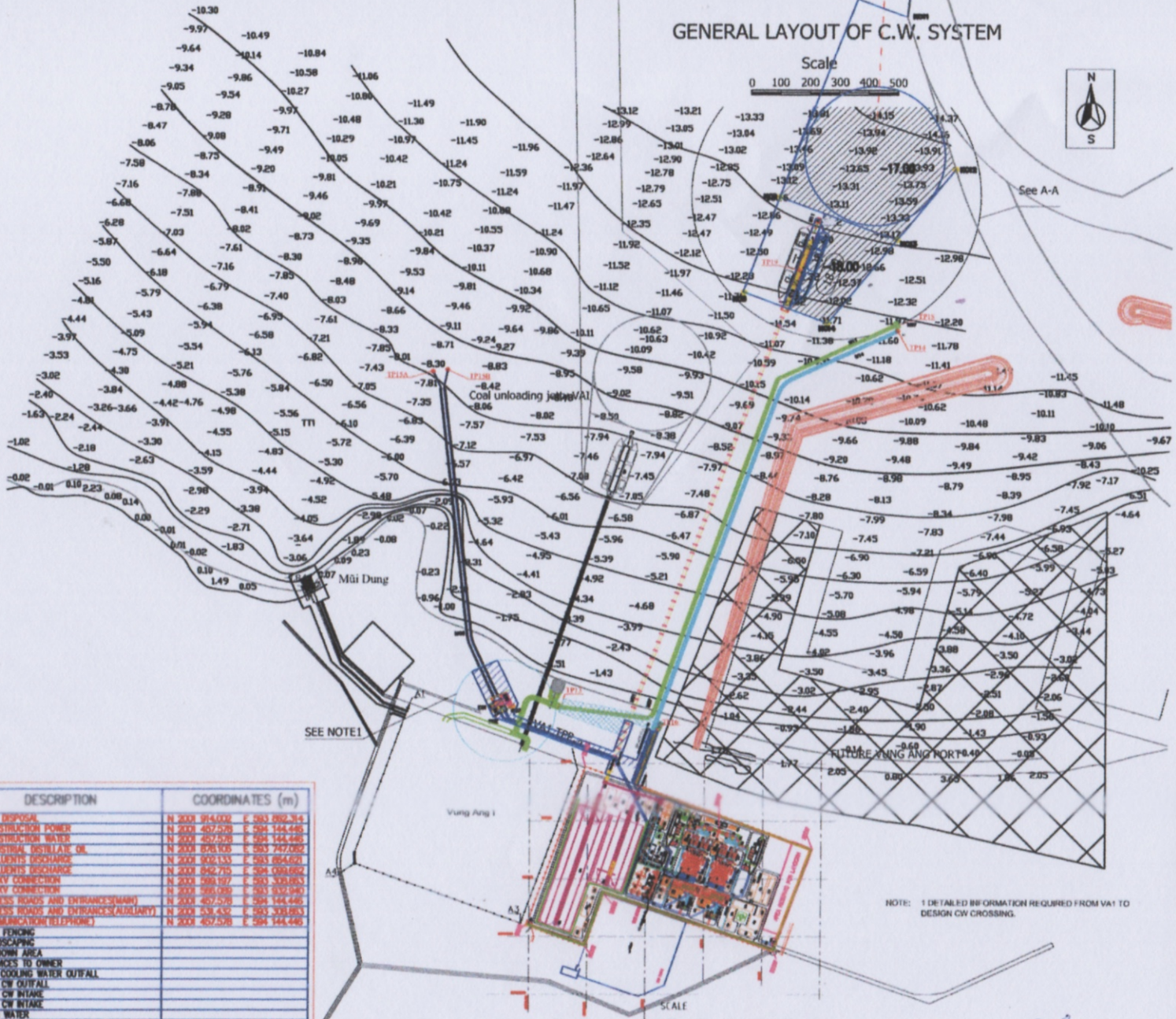
# GENERAL LAYOUT OF C.W. SYSTEM

Scale  
0 100 200 300 400 500



## LEGEND

- AW GENERAL LAYOUT SITE FOOTPRINT
- AW1 ASH BRIDGE AND PARAPETS AREAS
- AW2 ASH BRIDGE AND PARAPETS AREAS
- AW3 ASH BRIDGE AND PARAPETS AREAS
- AW4 ASH BRIDGE AND PARAPETS AREAS
- AW5 ASH BRIDGE AND PARAPETS AREAS
- AW6 ASH BRIDGE AND PARAPETS AREAS
- AW7 ASH BRIDGE AND PARAPETS AREAS
- AW8 ASH BRIDGE AND PARAPETS AREAS
- AW9 ASH BRIDGE AND PARAPETS AREAS
- AW10 ASH BRIDGE AND PARAPETS AREAS
- AW11 ASH BRIDGE AND PARAPETS AREAS
- AW12 ASH BRIDGE AND PARAPETS AREAS
- AW13 ASH BRIDGE AND PARAPETS AREAS
- AW14 ASH BRIDGE AND PARAPETS AREAS
- AW15 ASH BRIDGE AND PARAPETS AREAS
- AW16 ASH BRIDGE AND PARAPETS AREAS
- AW17 ASH BRIDGE AND PARAPETS AREAS
- AW18 ASH BRIDGE AND PARAPETS AREAS
- AW19 ASH BRIDGE AND PARAPETS AREAS
- AW20 ASH BRIDGE AND PARAPETS AREAS
- AW21 ASH BRIDGE AND PARAPETS AREAS
- AW22 ASH BRIDGE AND PARAPETS AREAS
- AW23 ASH BRIDGE AND PARAPETS AREAS
- AW24 ASH BRIDGE AND PARAPETS AREAS
- AW25 ASH BRIDGE AND PARAPETS AREAS
- AW26 ASH BRIDGE AND PARAPETS AREAS
- AW27 ASH BRIDGE AND PARAPETS AREAS
- AW28 ASH BRIDGE AND PARAPETS AREAS
- AW29 ASH BRIDGE AND PARAPETS AREAS
- AW30 ASH BRIDGE AND PARAPETS AREAS
- AW31 ASH BRIDGE AND PARAPETS AREAS
- AW32 ASH BRIDGE AND PARAPETS AREAS
- AW33 ASH BRIDGE AND PARAPETS AREAS
- AW34 ASH BRIDGE AND PARAPETS AREAS
- AW35 ASH BRIDGE AND PARAPETS AREAS
- AW36 ASH BRIDGE AND PARAPETS AREAS
- AW37 ASH BRIDGE AND PARAPETS AREAS
- AW38 ASH BRIDGE AND PARAPETS AREAS
- AW39 ASH BRIDGE AND PARAPETS AREAS
- AW40 ASH BRIDGE AND PARAPETS AREAS
- AW41 ASH BRIDGE AND PARAPETS AREAS
- AW42 ASH BRIDGE AND PARAPETS AREAS
- AW43 ASH BRIDGE AND PARAPETS AREAS
- AW44 ASH BRIDGE AND PARAPETS AREAS
- AW45 ASH BRIDGE AND PARAPETS AREAS
- AW46 ASH BRIDGE AND PARAPETS AREAS
- AW47 ASH BRIDGE AND PARAPETS AREAS
- AW48 ASH BRIDGE AND PARAPETS AREAS
- AW49 ASH BRIDGE AND PARAPETS AREAS
- AW50 ASH BRIDGE AND PARAPETS AREAS
- AW51 ASH BRIDGE AND PARAPETS AREAS
- AW52 ASH BRIDGE AND PARAPETS AREAS
- AW53 ASH BRIDGE AND PARAPETS AREAS
- AW54 ASH BRIDGE AND PARAPETS AREAS
- AW55 ASH BRIDGE AND PARAPETS AREAS
- AW56 ASH BRIDGE AND PARAPETS AREAS
- AW57 ASH BRIDGE AND PARAPETS AREAS
- AW58 ASH BRIDGE AND PARAPETS AREAS
- AW59 ASH BRIDGE AND PARAPETS AREAS
- AW60 ASH BRIDGE AND PARAPETS AREAS
- AW61 ASH BRIDGE AND PARAPETS AREAS
- AW62 ASH BRIDGE AND PARAPETS AREAS
- AW63 ASH BRIDGE AND PARAPETS AREAS
- AW64 ASH BRIDGE AND PARAPETS AREAS
- AW65 ASH BRIDGE AND PARAPETS AREAS
- AW66 ASH BRIDGE AND PARAPETS AREAS
- AW67 ASH BRIDGE AND PARAPETS AREAS
- AW68 ASH BRIDGE AND PARAPETS AREAS
- AW69 ASH BRIDGE AND PARAPETS AREAS
- AW70 ASH BRIDGE AND PARAPETS AREAS
- AW71 ASH BRIDGE AND PARAPETS AREAS
- AW72 ASH BRIDGE AND PARAPETS AREAS
- AW73 ASH BRIDGE AND PARAPETS AREAS
- AW74 ASH BRIDGE AND PARAPETS AREAS
- AW75 ASH BRIDGE AND PARAPETS AREAS
- AW76 ASH BRIDGE AND PARAPETS AREAS
- AW77 ASH BRIDGE AND PARAPETS AREAS
- AW78 ASH BRIDGE AND PARAPETS AREAS
- AW79 ASH BRIDGE AND PARAPETS AREAS
- AW80 ASH BRIDGE AND PARAPETS AREAS
- AW81 ASH BRIDGE AND PARAPETS AREAS
- AW82 ASH BRIDGE AND PARAPETS AREAS
- AW83 ASH BRIDGE AND PARAPETS AREAS
- AW84 ASH BRIDGE AND PARAPETS AREAS
- AW85 ASH BRIDGE AND PARAPETS AREAS
- AW86 ASH BRIDGE AND PARAPETS AREAS
- AW87 ASH BRIDGE AND PARAPETS AREAS
- AW88 ASH BRIDGE AND PARAPETS AREAS
- AW89 ASH BRIDGE AND PARAPETS AREAS
- AW90 ASH BRIDGE AND PARAPETS AREAS
- AW91 ASH BRIDGE AND PARAPETS AREAS
- AW92 ASH BRIDGE AND PARAPETS AREAS
- AW93 ASH BRIDGE AND PARAPETS AREAS
- AW94 ASH BRIDGE AND PARAPETS AREAS
- AW95 ASH BRIDGE AND PARAPETS AREAS
- AW96 ASH BRIDGE AND PARAPETS AREAS
- AW97 ASH BRIDGE AND PARAPETS AREAS
- AW98 ASH BRIDGE AND PARAPETS AREAS
- AW99 ASH BRIDGE AND PARAPETS AREAS
- AW100 ASH BRIDGE AND PARAPETS AREAS
- AW101 ASH BRIDGE AND PARAPETS AREAS
- AW102 ASH BRIDGE AND PARAPETS AREAS
- AW103 ASH BRIDGE AND PARAPETS AREAS
- AW104 ASH BRIDGE AND PARAPETS AREAS
- AW105 ASH BRIDGE AND PARAPETS AREAS
- AW106 ASH BRIDGE AND PARAPETS AREAS
- AW107 ASH BRIDGE AND PARAPETS AREAS
- AW108 ASH BRIDGE AND PARAPETS AREAS
- AW109 ASH BRIDGE AND PARAPETS AREAS
- AW110 ASH BRIDGE AND PARAPETS AREAS
- AW111 ASH BRIDGE AND PARAPETS AREAS
- AW112 ASH BRIDGE AND PARAPETS AREAS
- AW113 ASH BRIDGE AND PARAPETS AREAS
- AW114 ASH BRIDGE AND PARAPETS AREAS
- AW115 ASH BRIDGE AND PARAPETS AREAS
- AW116 ASH BRIDGE AND PARAPETS AREAS
- AW117 ASH BRIDGE AND PARAPETS AREAS
- AW118 ASH BRIDGE AND PARAPETS AREAS
- AW119 ASH BRIDGE AND PARAPETS AREAS
- AW120 ASH BRIDGE AND PARAPETS AREAS
- AW121 ASH BRIDGE AND PARAPETS AREAS
- AW122 ASH BRIDGE AND PARAPETS AREAS
- AW123 ASH BRIDGE AND PARAPETS AREAS
- AW124 ASH BRIDGE AND PARAPETS AREAS
- AW125 ASH BRIDGE AND PARAPETS AREAS
- AW126 ASH BRIDGE AND PARAPETS AREAS
- AW127 ASH BRIDGE AND PARAPETS AREAS
- AW128 ASH BRIDGE AND PARAPETS AREAS
- AW129 ASH BRIDGE AND PARAPETS AREAS
- AW130 ASH BRIDGE AND PARAPETS AREAS
- AW131 ASH BRIDGE AND PARAPETS AREAS
- AW132 ASH BRIDGE AND PARAPETS AREAS
- AW133 ASH BRIDGE AND PARAPETS AREAS
- AW134 ASH BRIDGE AND PARAPETS AREAS
- AW135 ASH BRIDGE AND PARAPETS AREAS
- AW136 ASH BRIDGE AND PARAPETS AREAS
- AW137 ASH BRIDGE AND PARAPETS AREAS
- AW138 ASH BRIDGE AND PARAPETS AREAS
- AW139 ASH BRIDGE AND PARAPETS AREAS
- AW140 ASH BRIDGE AND PARAPETS AREAS
- AW141 ASH BRIDGE AND PARAPETS AREAS
- AW142 ASH BRIDGE AND PARAPETS AREAS
- AW143 ASH BRIDGE AND PARAPETS AREAS
- AW144 ASH BRIDGE AND PARAPETS AREAS
- AW145 ASH BRIDGE AND PARAPETS AREAS
- AW146 ASH BRIDGE AND PARAPETS AREAS
- AW147 ASH BRIDGE AND PARAPETS AREAS
- AW148 ASH BRIDGE AND PARAPETS AREAS
- AW149 ASH BRIDGE AND PARAPETS AREAS
- AW150 ASH BRIDGE AND PARAPETS AREAS
- AW151 ASH BRIDGE AND PARAPETS AREAS
- AW152 ASH BRIDGE AND PARAPETS AREAS
- AW153 ASH BRIDGE AND PARAPETS AREAS
- AW154 ASH BRIDGE AND PARAPETS AREAS
- AW155 ASH BRIDGE AND PARAPETS AREAS
- AW156 ASH BRIDGE AND PARAPETS AREAS
- AW157 ASH BRIDGE AND PARAPETS AREAS
- AW158 ASH BRIDGE AND PARAPETS AREAS
- AW159 ASH BRIDGE AND PARAPETS AREAS
- AW160 ASH BRIDGE AND PARAPETS AREAS
- AW161 ASH BRIDGE AND PARAPETS AREAS
- AW162 ASH BRIDGE AND PARAPETS AREAS
- AW163 ASH BRIDGE AND PARAPETS AREAS
- AW164 ASH BRIDGE AND PARAPETS AREAS
- AW165 ASH BRIDGE AND PARAPETS AREAS
- AW166 ASH BRIDGE AND PARAPETS AREAS
- AW167 ASH BRIDGE AND PARAPETS AREAS
- AW168 ASH BRIDGE AND PARAPETS AREAS
- AW169 ASH BRIDGE AND PARAPETS AREAS
- AW170 ASH BRIDGE AND PARAPETS AREAS
- AW171 ASH BRIDGE AND PARAPETS AREAS
- AW172 ASH BRIDGE AND PARAPETS AREAS
- AW173 ASH BRIDGE AND PARAPETS AREAS
- AW174 ASH BRIDGE AND PARAPETS AREAS
- AW175 ASH BRIDGE AND PARAPETS AREAS
- AW176 ASH BRIDGE AND PARAPETS AREAS
- AW177 ASH BRIDGE AND PARAPETS AREAS
- AW178 ASH BRIDGE AND PARAPETS AREAS
- AW179 ASH BRIDGE AND PARAPETS AREAS
- AW180 ASH BRIDGE AND PARAPETS AREAS
- AW181 ASH BRIDGE AND PARAPETS AREAS
- AW182 ASH BRIDGE AND PARAPETS AREAS
- AW183 ASH BRIDGE AND PARAPETS AREAS
- AW184 ASH BRIDGE AND PARAPETS AREAS
- AW185 ASH BRIDGE AND PARAPETS AREAS
- AW186 ASH BRIDGE AND PARAPETS AREAS
- AW187 ASH BRIDGE AND PARAPETS AREAS
- AW188 ASH BRIDGE AND PARAPETS AREAS
- AW189 ASH BRIDGE AND PARAPETS AREAS
- AW190 ASH BRIDGE AND PARAPETS AREAS
- AW191 ASH BRIDGE AND PARAPETS AREAS
- AW192 ASH BRIDGE AND PARAPETS AREAS
- AW193 ASH BRIDGE AND PARAPETS AREAS
- AW194 ASH BRIDGE AND PARAPETS AREAS
- AW195 ASH BRIDGE AND PARAPETS AREAS
- AW196 ASH BRIDGE AND PARAPETS AREAS
- AW197 ASH BRIDGE AND PARAPETS AREAS
- AW198 ASH BRIDGE AND PARAPETS AREAS
- AW199 ASH BRIDGE AND PARAPETS AREAS
- AW200 ASH BRIDGE AND PARAPETS AREAS



SEE NOTE 1

NOTE: 1 DETAILED INFORMATION REQUIRED FROM V&T TO DESIGN CW CROSSING.

NAME	DESCRIPTION	COORDINATES (m)
IP1	ASH DISPOSAL	N 200 914.002 E 593 892.714
IP2	CONSTRUCTION POWER	N 200 497.576 E 594 144.448
IP3	CONSTRUCTION WATER	N 200 497.576 E 594 144.448
IP4	INDUSTRIAL DISTILLATE OIL	N 200 826.105 E 593 747.092
IP5A	EFFLUENTS DISCHARGE	N 200 962.133 E 593 864.692
IP5B	EFFLUENTS DISCHARGE	N 200 962.715 E 594 034.692
IP5C	SEWER CONNECTION	N 200 593.197 E 593 338.893
IP5D	SEWER CONNECTION	N 200 593.090 E 593 832.980
IP7A	ACCESS ROADS AND ENTRANCES (SWAN)	N 200 497.576 E 594 144.448
IP7B	ACCESS ROADS AND ENTRANCES (AURARY)	N 200 538.430 E 593 338.893
IP8	COMMUNICATION TELEPHONE	N 200 497.576 E 594 144.448
IP9	SITE FENCING	
IP10	LANDSCAPING	
IP11	LAYDOWN AREA	
IP12	SERVICES TO OWNER	
IP13	V&T COOLING WATER OUTFALL	
IP14	V&T CW OUTFALL	
IP15A	V&T CW INTAKE	
IP15B	V&T CW INTAKE	
IP16	RAIN WATER	
IP17	RAW WATER SUPPLY FOR wet ash slurry system AT SITE BOUNDARY LIMIT	
IP18	V&T CW OUTFALL	
IP19	COAL JETTY	
IP20	POWER SUPPLY TO RETURN WATER PUMPS	AT ASH DISPOSAL SITE
	CHIMNEY	N 200 892.839 E 593 195.261

REV	DATE	APP'D	CHK'D BY	DATE	DESCRIPTION	STATUS
E1	2017.06.21				Issue of First Issue	PREL
E2	2017.09.28				Issue of FOR BIDDING	PREL
N	2017.04.12	Loth	Marchal	Grandel	ISSUE FOR BID	PRE
A	2011.04.25	Gud	Steddon	Long	FIRST ISSUE	PREL

VUNG ANG II VIETNAM  
2 x 660MW Thermal Power Project  
COOLING WATER AND COAL JETTY  
SITE

POWER PLANTS  
GE Power  
N<sup>C</sup> VGA 00 M A00--GA054

Proprietary and Confidential Information: © General Electric Company and/or its Affiliates, 2017. All rights reserved. Disclosure to third parties without express written authority is strictly prohibited. Disclaimer: The information contained in this document does not form part of, and is not to be construed as, an offer capable of acceptance except to the extent expressly incorporated into a full commercial offer.