

## PART A—INTRODUCTION AND BACKGROUND

# Environmental Assessment Certificate Application

## LNG Canada Export Terminal

### Section 1 – Purpose of the Application

October 2014



**LNG CANADA**  
Opportunity for British Columbia. Energy for the world

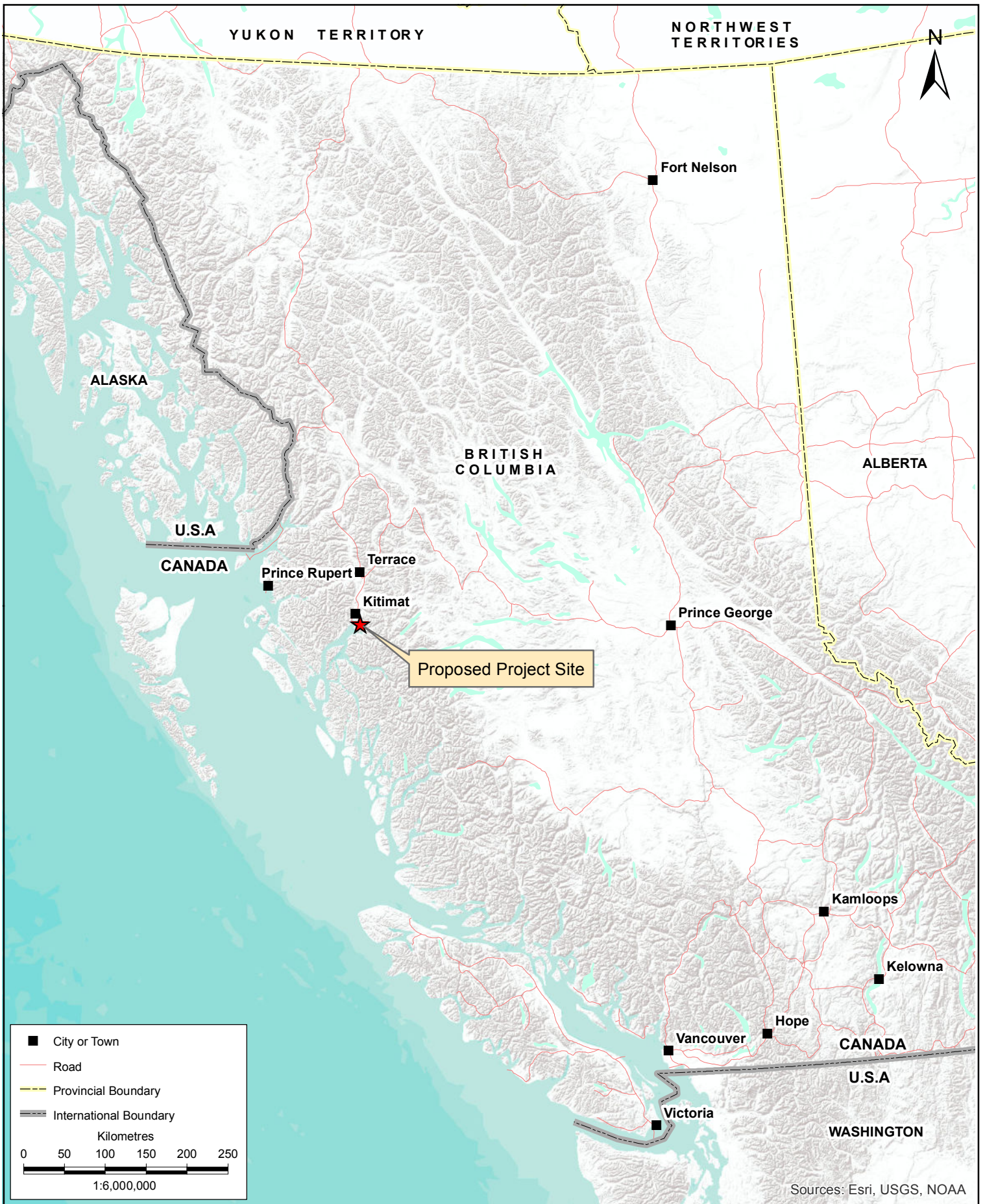
Joint venture companies



# 1 PURPOSE OF THE APPLICATION

LNG Canada Development Inc. (LNG Canada) is proposing to construct and operate the LNG Canada Export Terminal (the Project) in the District of Kitimat, British Columbia (BC), Canada (Figure 1.0-1). The proposed Project consists of a liquefied natural gas (LNG) facility including a processing and storage site, and a marine terminal for the export of LNG from the facility by LNG carriers (Figure 1.0-2 and Figure 1.0-3). It is anticipated that the Project will be constructed in phases: the first phase will consist of two processing units referred to as natural gas liquefaction trains (trains 1 and 2) with a design capacity for processing approximately 13 million tonnes per annum (mtpa) of LNG. The subsequent phase(s) (train 3, 4) will add an additional 13 mtpa of design capacity for a full build-out design capacity of approximately 26 mtpa. Supply for processing at full build-out will be approximately 119 million m<sup>3</sup>/day of natural gas (4.2 billion standard cubic feet per day [Bcf/day] or 3.9 petajoules per day [PJ/day]), provided by a third-party-owned and operated pipeline. At full build-out, LNG Canada will ship approximately 26 mtpa of LNG to global markets.

The Project qualifies as a reviewable project under the BC *Environmental Assessment Act* (BCEAA) and as a designated project under the *Canadian Environmental Assessment Act, 2012* (CEAA 2012). To meet both provincial and federal requirements for the Project, the Federal Minister of the Environment has granted substitution of the environmental assessment (EA) process to BC, and will make a decision about the Project based on the regulatory review process undertaken by, and assessment report prepared by, the province. This Application for an Environmental Assessment Certificate (EAC) meets the criteria specified in the Application Information Requirements (AIR) document approved by the BC Environmental Assessment Office (EAO) on February 24, 2014 and complies with the requirements of the Orders pursuant to Section 11 and Section 13 of BCEAA (Section 11 Order and Section 13 Order) issued by the EAO. This Application will provide the EAO with sufficient information to prepare its Assessment Report for the provincial and federal Ministers to make decisions pursuant to the BCEAA and CEAA 2012.

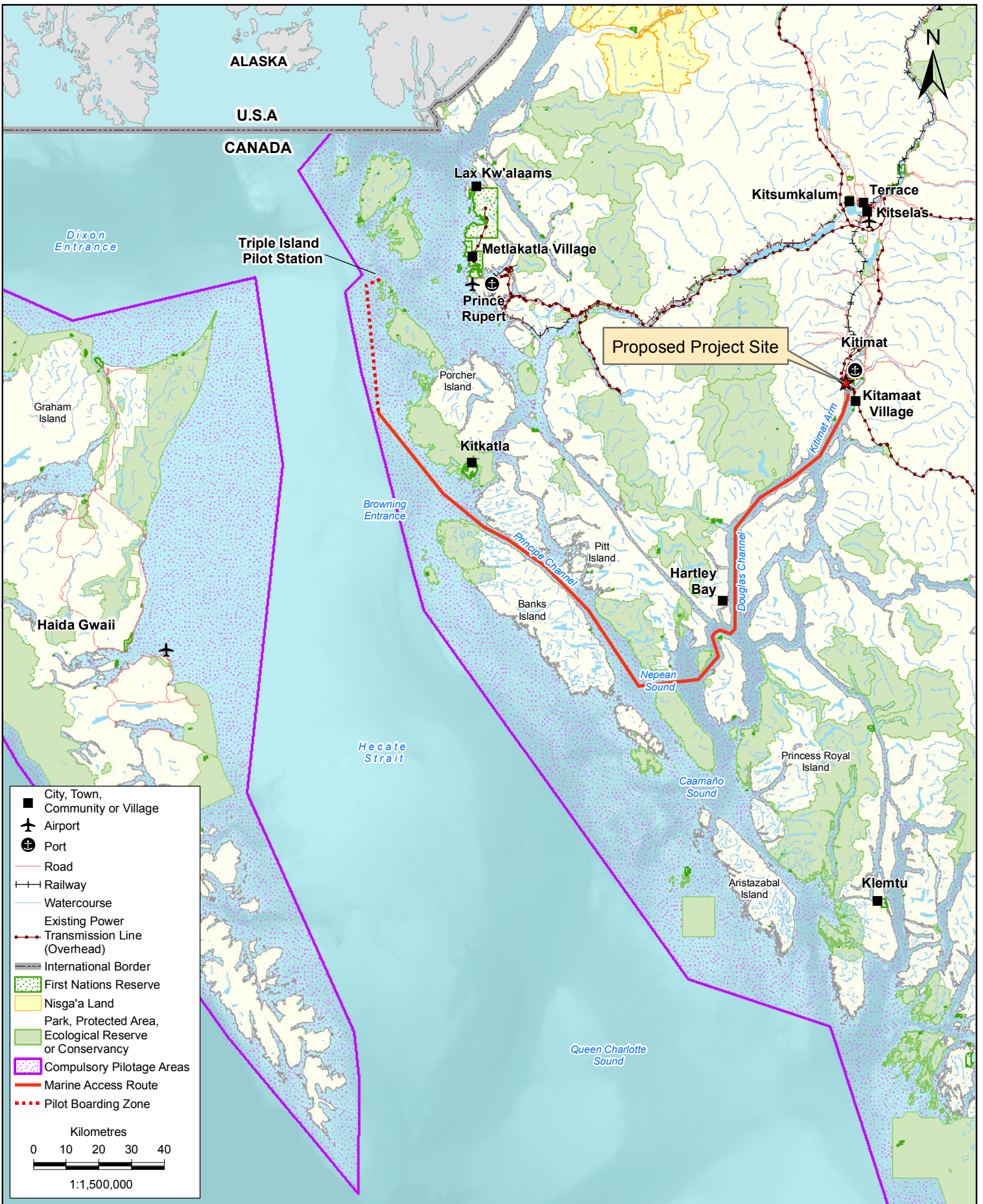


ENVIRONMENTAL EFFECTS ASSESSMENT  
PURPOSE OF THE APPLICATION

**PROJECT LOCATION**

LNG CANADA EXPORT TERMINAL  
KITIMAT, BRITISH COLUMBIA

PROJECTION	BC Albers	DRAWN BY	NP
DATUM	NAD 83	CHECKED BY	SW
DATE	26-AUG-14	FIGURE NO.	1.0-1



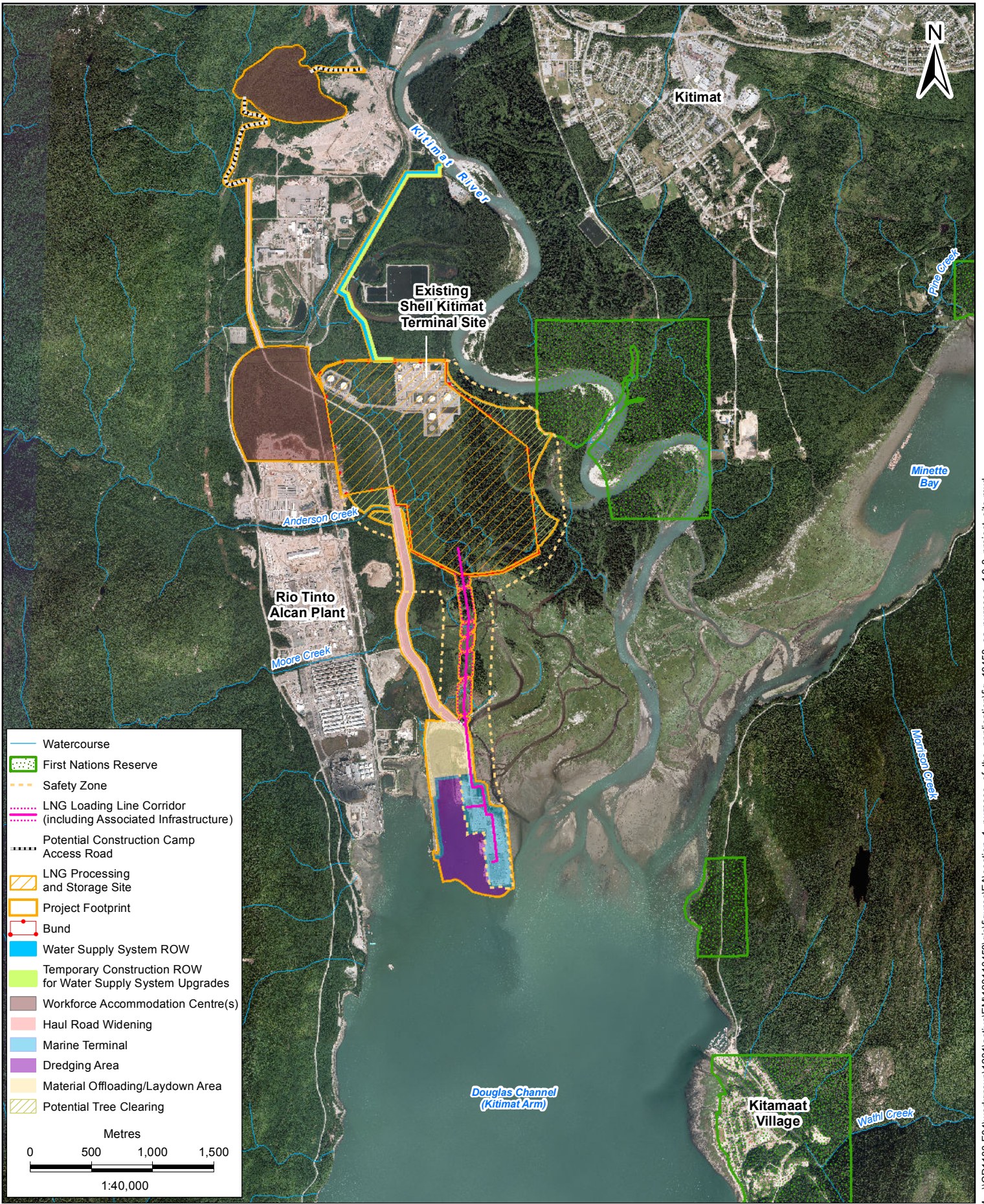
\CD1183-F04\workgroup\1231\active\EM\123110458\gis\figures\EA\section\_1\_purpose\_of\_the\_application\fig\_10458\_ea\_purpose\_1.0-2\_marine\_access\_route.mxd



ENVIRONMENTAL EFFECTS ASSESSMENT  
 PURPOSE OF THE APPLICATION  
**MARINE ACCESS ROUTE TO PROJECT SITE**  
 LNG CANADA EXPORT TERMINAL  
 KITIMAT, BRITISH COLUMBIA

PROJECTION	UTM9	DRAWN BY	NP
DATUM	NAD 83	CHECKED BY	WP
DATE	26-AUG-14	FIGURE NO.	<b>1.0-2</b>

26/08/2014 - 9:23:50 AM



\\CD1183-F04\workgroup\1231\active\EM\123110458\gis\figures\EA\section\_1\_purpose\_of\_the\_application\fig\_10458\_ea\_purpose\_1.0-3\_project\_site.mxd



ENVIRONMENTAL EFFECTS ASSESSMENT  
PURPOSE OF THE APPLICATION

**PROJECT SITE**

LNG CANADA EXPORT TERMINAL  
KITIMAT, BRITISH COLUMBIA

PROJECTION	UTM9	DRAWN BY	SS
DATUM	NAD 83	CHECKED BY	SW
DATE	26-AUG-14	FIGURE NO.	<b>1.0-3</b>

26/08/2014 - 9:51:24 AM