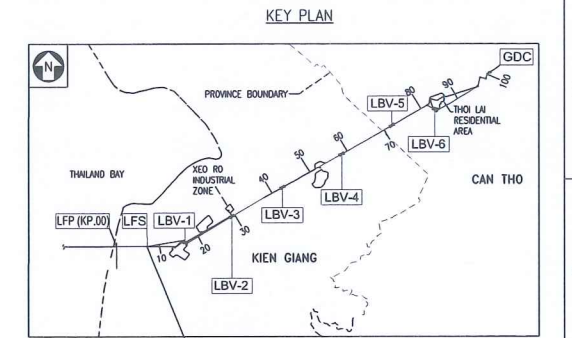
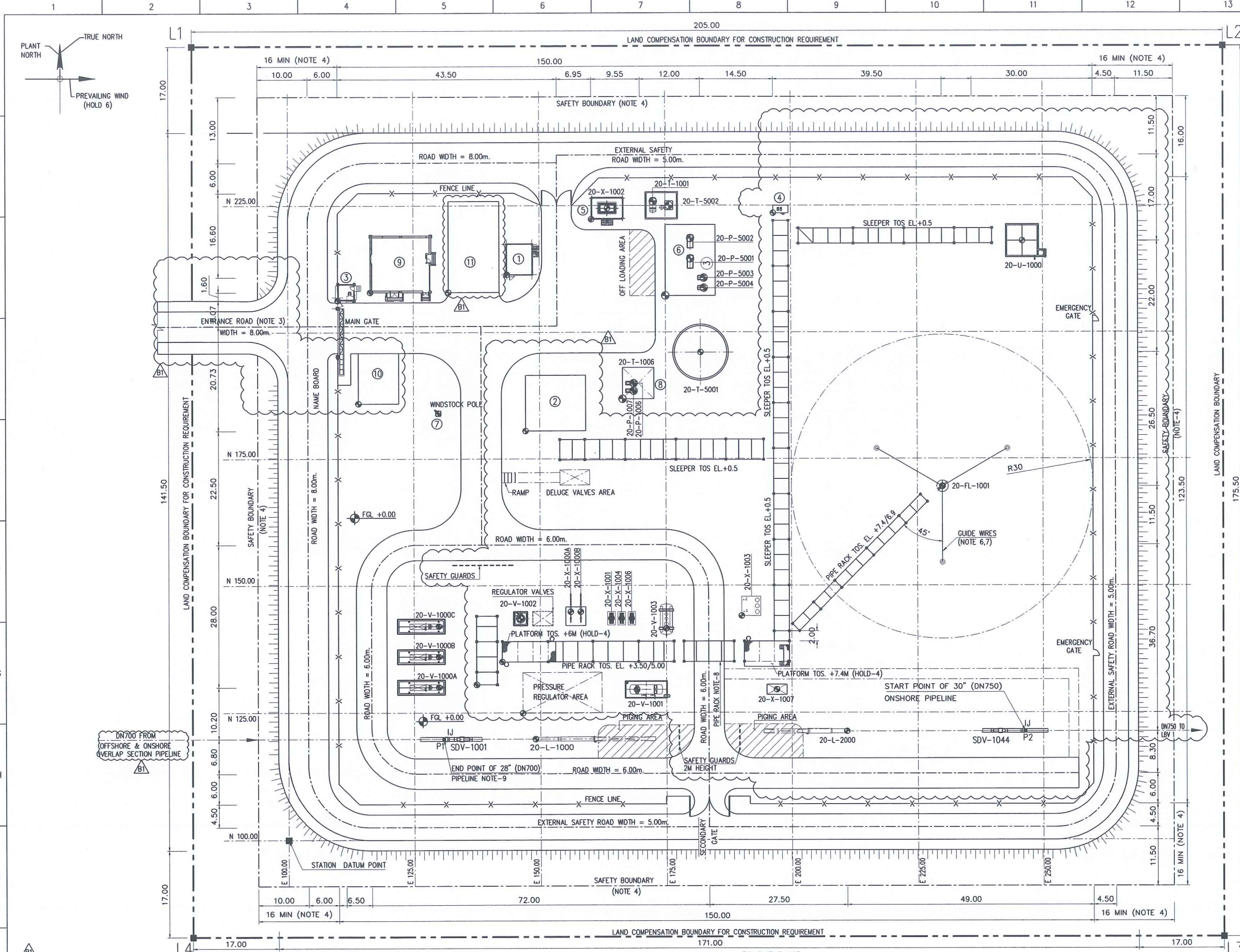
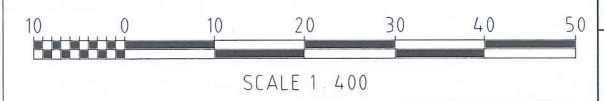


THIS DOCUMENT AND INFORMATION CONTAINED IN IT IS THE PROPERTY OF WP-PVE/ SWPOC AND MAY NOT BE EXPLOITED, USED, COPIED, DUPLICATED OR REPRODUCED WITHOUT THE PRIOR PERMISSION OF WP-PVE/ SWPOC.



- NOTES:**
- ALL DIMENSIONS, ELEVATIONS & COORDINATES ARE IN METRES UNLESS NOTED OTHERWISE.
  - FGL +0.00: FINISHED GROUND LEVEL CORRESPONDS TO +2.0 METRE ABOVE NATIONAL ALTITUDES SYSTEM HONAIU - HAI PHONG COORDINATE SYSTEM: VN2000, CENTRAL MERIDIAN: 104°30', ZONE: 3' (HOLD-2)
  - ACCESS ROAD REFER TO DWG. NO. SWG-WPPVE-FEED-20-CI-DRD-002
  - SAFETY BOUNDARY DEFINED ACCORDING TO THE VIETNAM GOVERNMENT DECREE NO. 13/2011/NQ-CP, TABLE 9. SAFETY BOUNDARY SHALL HAVE VISIBLE SIGNS INSTALLED
  - WIND DIRECTION BASED ON QCVN:2009/BXD (HOLD-6)
  - SAFETY SIGNS TO BE PROVIDED AROUND THE FLARE RESTRICTION AREA
  - GUIDE WIRES ARE INDICATED ONLY, TO BE DESIGNED BY CIVIL
  - HEADROOM SHALL BE MIN OF 4.5M
  - COORDINATES ARE BASE ON PIPELINE ROUTES, DWG NO. SWG-WPPVE-FEED-20-PL-DCR-0001

- LEGEND:**
- FENCE
  - BENCHMARK
  - OPEN TRENCH
- STATION DATUM COORDINATES** VN2000 COORDINATES  
 N 100 X = 1079797.538  
 E 100 Y = 547819.985
- HOLDS:**
- SIZE OF EQUIPMENT AND SKID PACKAGES.
  - (DELETED)
  - (DELETED)
  - PIPE RACK, SLEEPER AND SERVICE PLATFORM DIMENSIONS AND ALEVATION.
  - LOCATION OF OPEN TRENCH FOR CLOSED DRAIN PIPING.
  - PREVAILING WIND DIRECTION
  - (DELETED)
  - (DELETED)



POINT	NATIONAL		LOCAL		NOTE
	X (m)	Y (m)	EASTING	NORTHING	
L1	1079954.038	547800.985	81.00	256.50	BENCHMARK OF SAFETY BOUNDARY
L2	1079954.038	548005.985	286.00	256.50	
L3	1079778.565	548005.985	286.00	81.00	
L4	1079778.53	547800.985	81.00	81.00	
P1	1079817.338	547850.985	131.50	119.80	
P2	1079818.838	547966.444	246.00	121.30	

ITEM NO.	TAG NO.	DESCRIPTION	SIZE (M)	EASTING	NORTHING
1	20-FL-1001	FLARE STACK PACKAGE	HOLD 1	230.00	169.50
2	20-L-1000	PIG RECEIVER	HOLD 1	149.00	119.80
3	20-L-2000	PIG LAUNCHER	HOLD 1	211.00	121.30
4	20-P-1006	WATER SUPPLY PUMP	HOLD 1	168.70	189.90
5	20-P-1007	WATER PUMP	HOLD 1	168.70	168.70
6	20-P-5001	ELECTRIC DRIVEN FIREWATER PUMP (MAIN)	HOLD 1	180.00	214.50
7	20-P-5002	DIESEL DRIVEN FIREWATER PUMP (STAND-BY)	HOLD 1	180.00	218.50
8	20-P-5003	ELECTRIC DRIVEN JOCKEY PUMP (MAIN)	HOLD 1	182.70	210.70
9	20-P-5004	ELECTRIC DRIVEN JOCKEY PUMP (STAND-BY)	HOLD 1	182.70	208.70
10	20-T-1001	DIESEL STORAGE TANK	HOLD 1	172.60	225.80
11	20-T-1006	CLEAN WATER TANK	HOLD 1	166.50	186.80
12	20-T-5001	FIRE WATER TANK	HOLD 1	182.00	196.00
13	20-T-5002	DIESEL DAY TANK	HOLD 1	175.75	225.00
14	20-V-1000A	FILTER SEPARATOR - A	HOLD 1	130.00	130.00

ITEM NO.	TAG NO.	DESCRIPTION	SIZE (M)	EASTING	NORTHING
15	20-V-1000B	FILTER SEPARATOR - B	HOLD 1	130.00	136.00
16	20-V-1000C	FILTER SEPARATOR - C	HOLD 1	130.00	142.00
17	20-V-1001	FLARE KNOCKOUT DRUM	HOLD 1	169.20	129.50
18	20-V-1002	GAS SCRUBBER	HOLD 1	146.10	143.50
19	20-V-1003	CLOSED DRAIN VESSEL	HOLD 1	175.00	141.50
20	20-X-1000A	GAS HEATER PACKAGE - A	HOLD 1	166.10	144.80
21	20-X-1000B	GAS HEATER PACKAGE - B	HOLD 1	158.10	144.80
22	20-X-1001	NITROGEN BACK UP BOTTLES PACKAGE	HOLD 1	164.20	143.50
23	20-X-1002	EMERGENCY DIESEL ENGINE DRIVEN GENERATOR PACKAGE	HOLD 1	163.60	222.45
24	20-X-1003	CPI SEPARATOR PACKAGE	HOLD 1	188.00	164.00
25	20-X-1004	NITROGEN BACK UP BOTTLES PACKAGE	HOLD 1	166.20	143.50
26	20-X-1006	NITROGEN BACK UP BOTTLES PACKAGE	HOLD 1	168.20	143.50
27	20-U-1000	BURN PIT PACKAGE	HOLD 1	246.00	218.00
28	20-X-1007	ODORANT INJECTION PACKAGE	HOLD 1	197.00	129.50

ITEM NO.	DESCRIPTION	SIZE (M)	EASTING	NORTHING
1	WORKSHOP	5x6	143.60	211.400
2	CONTROL BUILDING	11x12	131.20	179.00
3	GUARD HOUSE	3.3x3.3	110.00	206.30
4	TRANSFORMER STATION	3x1.5	194.50	223.50
5	DIESEL GENERATOR HOUSE	6x4	160.45	222.30
6	FIRE WATER PUMP HOUSE	14x10	175.00	207.20
7	WINDSTOCK POLE	-	125.00	192.00
8	CLEAN WATER TANK SHELTER	6.2x6.2	163.50	187.80
9	OFFICE BUILDING/CANTEEN	11x12	116.40	207.900
10	PARKING SHELTER	8x10	132.60	185.90
11	FIRE TRUCK STATION	10x18	132.100	207.90

NO.	DOCUMENT NUMBER	REV.	SHT.No.
04	SWG-WPPVE-FEED-20-ME-LST-0001	-	-
03	SWG-WPPVE-FEED-20-PR-PID-0001-0016	-	-
02	SWG-WPPVE-FEED-20-PR-PFD-0001-0002	-	-
01	SWG-WPPVE-FEED-20-PR-UFD-0001-0005	-	-

REFERENCED DOCUMENTS			
DATE	DATE	DATE	
WP-PVE	SWPOC	CA	

CLIENT: PETROVIETNAM OIL AND GAS GROUP  
SOUTHWEST PIPELINE OPERATION COMPANY

CONTRACTOR: **WorleyParsons**  
CONSORTIUM OF WORLEYPARSONS & PV ENGINEERING

PROJECT: BLOCK B - O MON GAS PIPELINE

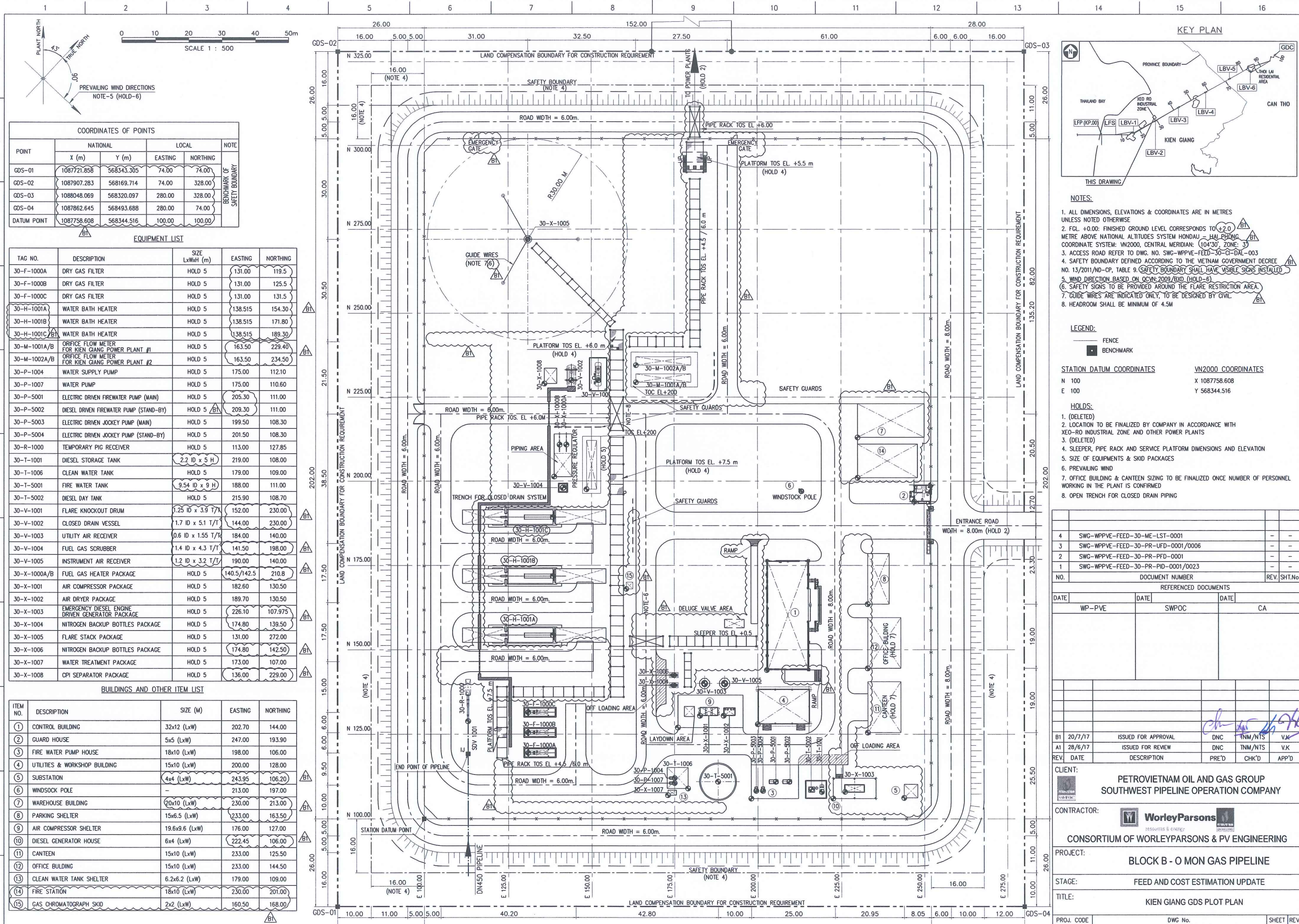
STAGE: FEED AND COST ESTIMATION UPDATE

TITLE: AN MINH LFS PLOT PLAN

PROJ. CODE	DWG No.	SHEET	REV.
SWG	SWG-WPPVE-FEED-20-PI-DPP-0001	1/1	B1

PV ENGINEERING J.S.C

THIS DOCUMENT AND INFORMATION CONTAINED IN IT IS THE PROPERTY OF WP-PVE/ SWPOC AND MAY NOT BE EXPLOITED, USED, COPIED, DUPLICATED OR REPRODUCED IN ANY FORM OR MEDIUM WITHOUT THE PRIOR PERMISSION OF WP-PVE/ SWPOC.



**COORDINATES OF POINTS**

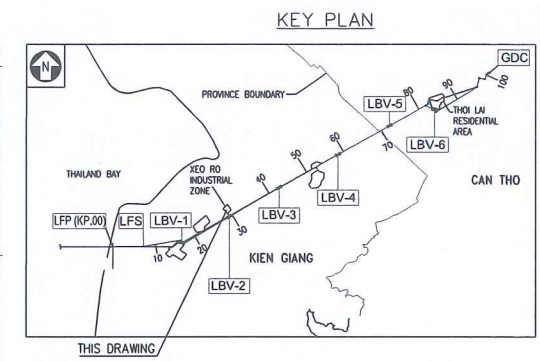
POINT	NATIONAL		LOCAL		NOTE
	X (m)	Y (m)	EASTING	NORTHING	
GDS-01	1087721.856	568343.305	74.00	74.00	BENCHMARK OF SAFETY BOUNDARY
GDS-02	1087907.283	568169.714	74.00	328.00	
GDS-03	1088048.069	568320.097	280.00	328.00	
GDS-04	1087862.645	568493.688	280.00	74.00	
DATUM POINT	1087758.608	568344.516	100.00	100.00	

**EQUIPMENT LIST**

TAG NO.	DESCRIPTION	SIZE LxWxH (m)	EASTING	NORTHING
30-F-1000A	DRY GAS FILTER	HOLD 5	131.00	119.5
30-F-1000B	DRY GAS FILTER	HOLD 5	131.00	125.5
30-F-1000C	DRY GAS FILTER	HOLD 5	131.00	131.5
30-H-1001A	WATER BATH HEATER	HOLD 5	138.515	154.30
30-H-1001B	WATER BATH HEATER	HOLD 5	138.515	171.80
30-H-1001C	WATER BATH HEATER	HOLD 5	138.515	189.30
30-M-1001A/B	ORIFICE FLOW METER FOR KIEN GIANG POWER PLANT #1	HOLD 5	163.50	229.40
30-M-1002A/B	ORIFICE FLOW METER FOR KIEN GIANG POWER PLANT #2	HOLD 5	163.50	234.50
30-P-1004	WATER SUPPLY PUMP	HOLD 5	175.00	112.10
30-P-1007	WATER PUMP	HOLD 5	175.00	110.60
30-P-5001	ELECTRIC DRIVEN FIREWATER PUMP (MAIN)	HOLD 5	205.30	111.00
30-P-5002	DIESEL DRIVEN FIREWATER PUMP (STAND-BY)	HOLD 5	209.30	111.00
30-P-5003	ELECTRIC DRIVEN JOCKEY PUMP (MAIN)	HOLD 5	199.50	108.30
30-P-5004	ELECTRIC DRIVEN JOCKEY PUMP (STAND-BY)	HOLD 5	201.50	108.30
30-R-1000	TEMPORARY PIC RECEIVER	HOLD 5	113.00	127.85
30-T-1001	DIESEL STORAGE TANK	2.2 ID x 5 H	219.00	108.00
30-T-1006	CLEAN WATER TANK	HOLD 5	179.00	109.00
30-T-5001	FIRE WATER TANK	9.54 ID x 9 H	188.00	111.00
30-T-5002	DIESEL DAY TANK	HOLD 5	215.90	108.70
30-V-1001	FLARE KNOCKOUT DRUM	1.25 ID x 3.9 T/H	152.00	230.00
30-V-1002	CLOSED DRAIN VESSEL	1.7 ID x 5.1 T/H	144.00	230.00
30-V-1003	UTILITY AIR RECEIVER	0.6 ID x 1.55 T/H	184.00	140.00
30-V-1004	FUEL GAS SCRUBBER	1.4 ID x 4.3 T/H	141.50	198.00
30-V-1005	INSTRUMENT AIR RECEIVER	1.2 ID x 3.2 T/H	190.00	140.00
30-X-1000A/B	FUEL GAS HEATER PACKAGE	HOLD 5	140.5/142.5	210.8
30-X-1001	AIR COMPRESSOR PACKAGE	HOLD 5	182.60	130.50
30-X-1002	AIR DRYER PACKAGE	HOLD 5	189.70	130.50
30-X-1003	EMERGENCY DIESEL ENGINE DRIVEN GENERATOR PACKAGE	HOLD 5	226.10	107.975
30-X-1004	NITROGEN BACKUP BOTTLES PACKAGE	HOLD 5	174.80	139.50
30-X-1005	FLARE STACK PACKAGE	HOLD 5	131.00	272.00
30-X-1006	NITROGEN BACKUP BOTTLES PACKAGE	HOLD 5	174.80	142.50
30-X-1007	WATER TREATMENT PACKAGE	HOLD 5	173.00	107.00
30-X-1008	CPI SEPARATOR PACKAGE	HOLD 5	136.00	229.00

**BUILDINGS AND OTHER ITEM LIST**

ITEM NO.	DESCRIPTION	SIZE (M)	EASTING	NORTHING
1	CONTROL BUILDING	32x12 (LxW)	202.70	144.00
2	GUARD HOUSE	5x5 (LxW)	247.00	193.90
3	FIRE WATER PUMP HOUSE	18x10 (LxW)	198.00	106.00
4	UTILITIES & WORKSHOP BUILDING	15x10 (LxW)	200.00	128.00
5	SUBSTATION	4x4 (LxW)	243.95	106.20
6	WINDSOCK POLE	-	213.00	197.00
7	WAREHOUSE BUILDING	20x10 (LxW)	230.00	213.00
8	PARKING SHELTER	15x6.5 (LxW)	233.00	163.50
9	AIR COMPRESSOR SHELTER	19.6x9.6 (LxW)	176.00	127.00
10	DIESEL GENERATOR HOUSE	6x4 (LxW)	222.45	106.00
11	CANTEEN	15x10 (LxW)	233.00	125.50
12	OFFICE BUILDING	15x10 (LxW)	233.00	144.50
13	CLEAN WATER TANK SHELTER	6.2x6.2 (LxW)	179.00	109.00
14	FIRE STATION	18x10 (LxW)	230.00	201.00
15	GAS CHROMATOGRAPH SKID	2x2 (LxW)	160.50	168.00



- NOTES:**
- ALL DIMENSIONS, ELEVATIONS & COORDINATES ARE IN METRES UNLESS NOTED OTHERWISE
  - FCL +0.00: FINISHED GROUND LEVEL CORRESPONDS TO +2.0 METRE ABOVE NATIONAL ALTITUDES SYSTEM HONAI - HAL PHONG COORDINATE SYSTEM: VN2000, CENTRAL MERIDIAN: 104°30', ZONE: 33
  - ACCESS ROAD REFER TO DWG. NO. SWG-WPPVE-FEED-30-CI-DAL-003
  - SAFETY BOUNDARY DEFINED ACCORDING TO THE VIETNAM GOVERNMENT DECREE NO. 13/2011/ND-CP, TABLE 9. SAFETY BOUNDARY SHALL HAVE VISIBLE SIGNS INSTALLED
  - WIND DIRECTION BASED ON QCVN:2009/BXD (HOLD-6)
  - SAFETY SIGNS TO BE PROVIDED AROUND THE FLARE RESTRICTION AREA.
  - GUIDE WIRES ARE INDICATED ONLY, TO BE DESIGNED BY CIVIL
  - HEADROOM SHALL BE MINIMUM OF 4.5M

**LEGEND:**

- FENCE
- BENCHMARK

**STATION DATUM COORDINATES**

N 100 X 1087758.608  
E 100 Y 568344.516

**COORDINATES**

VN2000 COORDINATES

- HOLDS:**
- (DELETED)
  - LOCATION TO BE FINALIZED BY COMPANY IN ACCORDANCE WITH XEO-RO INDUSTRIAL ZONE AND OTHER POWER PLANTS
  - (DELETED)
  - SLEEPER, PIPE RACK AND SERVICE PLATFORM DIMENSIONS AND ELEVATION
  - SIZE OF EQUIPMENTS & SKID PACKAGES
  - PREVAILING WIND
  - OFFICE BUILDING & CANTEEN SIZING TO BE FINALIZED ONCE NUMBER OF PERSONNEL WORKING IN THE PLANT IS CONFIRMED
  - OPEN TRENCH FOR CLOSED DRAIN PIPING

NO.	DOCUMENT NUMBER	REV.	SHT.No.
4	SWG-WPPVE-FEED-30-ME-LST-0001	-	-
3	SWG-WPPVE-FEED-30-PR-UFD-0001/0006	-	-
2	SWG-WPPVE-FEED-30-PR-PFD-0001	-	-
1	SWG-WPPVE-FEED-30-PR-PID-0001/0023	-	-

**REFERENCED DOCUMENTS**

DATE	DATE	DATE
WP-PVE	SWPOC	CA

**REV. DATE DESCRIPTION**

REV.	DATE	DESCRIPTION	PRE'D	CHK'D	APP'D
B1	20/7/17	ISSUED FOR APPROVAL	DNC	TNM/NTS	VK
A1	28/6/17	ISSUED FOR REVIEW	DNC	TNM/NTS	VK

**CLIENT:** PETROVIETNAM OIL AND GAS GROUP  
SOUTHWEST PIPELINE OPERATION COMPANY

**CONTRACTOR:** **WorleyParsons**  
resources & engineering

**PROJECT:** CONSORTIUM OF WORLEYPARSONS & PV ENGINEERING  
BLOCK B - O MON GAS PIPELINE

**STAGE:** FEED AND COST ESTIMATION UPDATE

**TITLE:** KIEN GIANG GDS PLOT PLAN

PROJ. CODE	DWG No.	SHEET	REV.
SWG	SWG-WPPVE-FEED-30-PH-DPP-0001	1/1	B1

PV ENGINEERING J.S.C