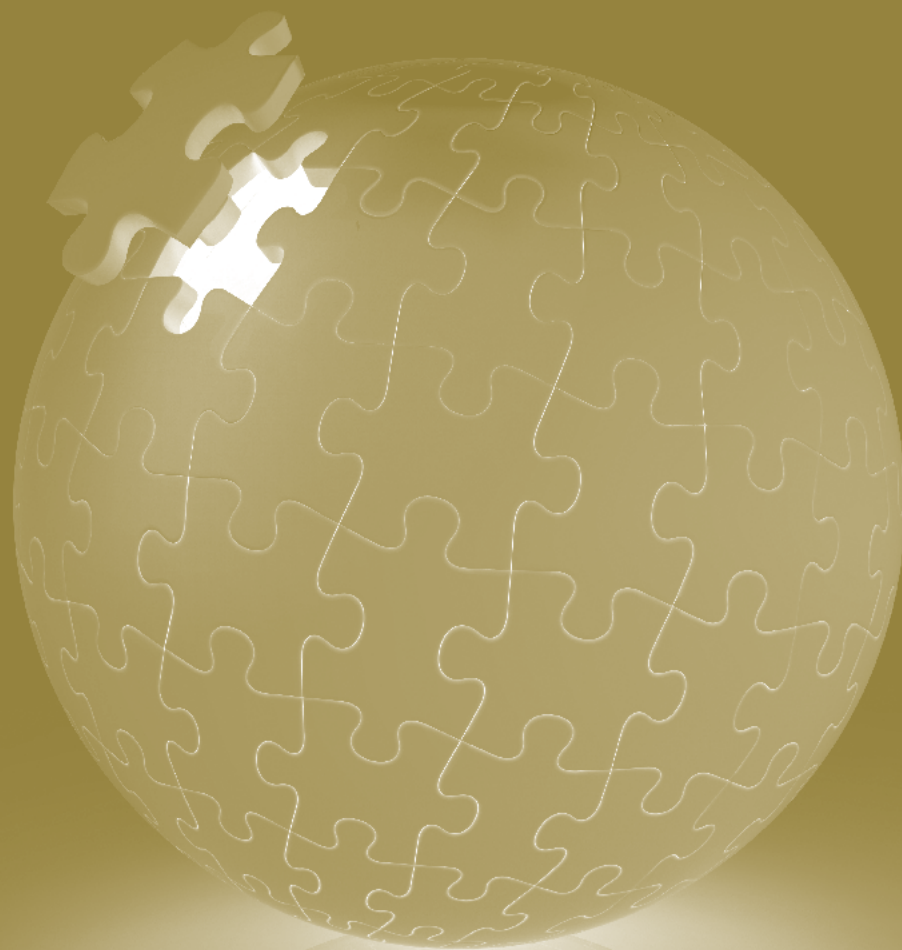


4. Operational and Administrative Policies

1. Corporate Governance.....	98
2. Risk Management	102
3. Public Information and Disclosure	106

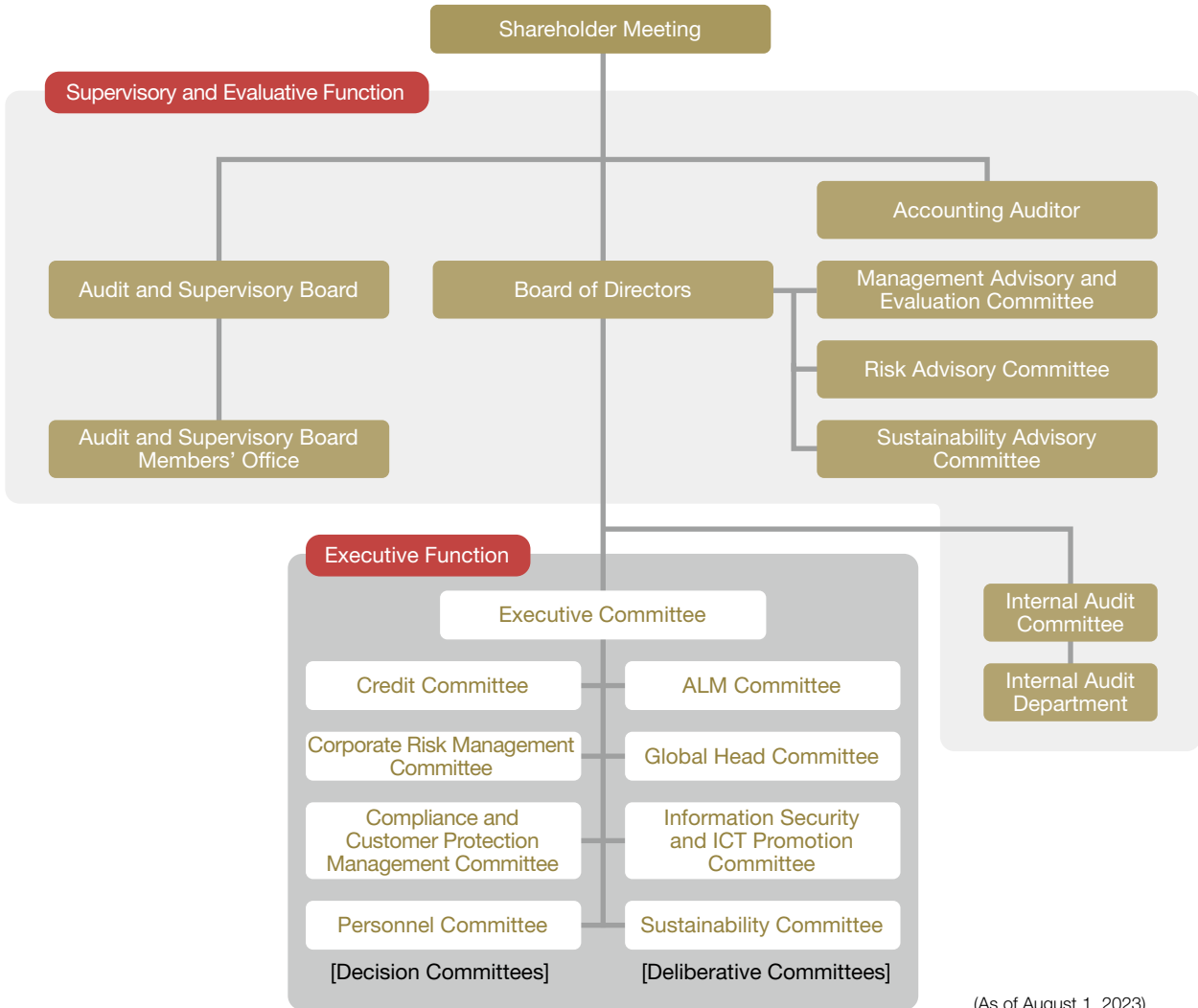


1. Corporate Governance

Fundamental Approach to Corporate Governance

JBIC is making efforts to build corporate governance structure in conducting operations with particular

attention to integrity and efficiency, as it seeks to fulfill the mission set out under the JBIC Act (Law No. 39, 2011) and realize its corporate philosophy.



(As of August 1, 2023)

Involvement of Japanese Government

As JBIC has its shares wholly owned by the Government of Japan, it is subject to the control of the Japanese government, its sole shareholder. Additionally, it is subject to the budget passed in the Diet, inspections by the Board of Audit of Japan, by the Competent Minister, and by the Financial Services Agency whose inspection is delegated by the Competent Minister.

Supervisory and Evaluation Function and the Conduct of JBIC Operations

To strengthen the supervisory and evaluative function of the Board of Directors as well as conduct speedy and flexible operations, JBIC has established, in addition to the Board of Directors, the Audit and Supervisory Board and other organs required by the Companies Act, the Management Advisory and Evaluation Committee, the Risk Advisory Committee, Sustainability Advisory

Committee, the Internal Audit Committee, and the Executive Committee. Furthermore, a variety of committees were set up by the Executive Committee that delegates specific tasks to them.

(1) Board of Directors

The Board of Directors consists of nine members, of which three members are non-executive directors, including two outside directors as set forth in the Companies Act. The non-executive directors supervise the conduct of representative directors and executive directors in JBIC's operations, thereby making a contribution to improving its governance.

(2) Audit and Supervisory Board

The Audit and Supervisory Board consists of three members, of which two are outside Audit and Supervisory Board Members, as set forth in the

Companies Act. Outside Audit and Supervisory Board Members contribute to improving the governance structure of JBIC, as they cooperate with the full-time Audit and Supervisory Board Member in auditing the conduct of its operations. As a section helping them execute their responsibilities, there is the Audit and Supervisory Board Members' Office.

(3) Management Advisory and Evaluation Committee

The Management Advisory and Evaluation Committee consists of external experts, including the outside director. They make assessment and offer advice on the matters referred to them by the Board of Directors pertaining to the business operations and management of JBIC.

■ List of Members of the Management Advisory and Evaluation Committee

(As of August 1, 2023)

Name	Occupation
URATA Shujiro	Professor Emeritus, Waseda University, Chairman, Research Institute of Economy, Trade and Industry, IAA (RIETI)
ENDO Noriko	Project Professor, Research Centers and Institutes, Keio University Global Research Institute
KAWAMURA Yoshinori	JBIC Managing Director (Outside Director)
KOIZUMI Shinichi	JBIC Managing Director (Outside Director)
SATO Yasuhiro	Senior Advisor, Mizuho Financial Group, Inc.
TAKAGI Yuzo	Certified Public Accountant
NIINAMI Takeshi	President & Chief Executive Officer, Member of the Board, Representative Director, Suntory Holdings Limited

(Listed in the order of 50 character kana syllabary, name listed without honorifics)

(4) Risk Advisory Committee

The Risk Advisory Committee consists of external experts, including the outside director. They offer advice on the matters referred to them by the Board of Directors pertaining to risk management and assessment framework associated with large-lot obligors and risk exposure to large-scale projects.

■ List of Members of the Risk Advisory Committee

(As of August 1, 2023)

Name	Occupation
ABE Shuhei	President, CEO of SPARX Group Co., Ltd.
EHARA Nobuyoshi	Co-founder, Unison Capital, Inc.
OGAWA Eiji	Professor, Faculty of Economics, Tokyo Keizai University
KAWAMURA Yoshinori	JBIC Managing Director (Outside Director)
KOIZUMI Shinichi	JBIC Managing Director (Outside Director)
SOGO Hiromi	Editorial Director of Luxury Media Group, Head of Editorial Content of Richesse & Esquire The BBB, and Editor in Chief of Richesse Content Division, Hearst Digital Japan Co., Ltd.
MATSUDA Chieko	Professor of Management, Graduate School of Management, Tokyo Metropolitan University
YOKOO Keisuke	President, Member of the Board, Chief Executive Officer, Japan Investment Corporation

(Listed in the order of 50 character kana syllabary, name listed without honorifics)

(5) Sustainability Advisory Committee

The Sustainability Advisory Committee consists of external experts. They offer advice on matters regarding JBIC's policy to advance initiatives toward the realization of sustainability.

■ List of Members of the Sustainability Advisory Committee

(As of August 1, 2023)

Name	Occupation
TAKAMURA Yukari	Professor, Institute for Future Initiatives, The University of Tokyo
Rachel Kyte	Dean Emerita, the Fletcher School, Tufts University
Tim Benton	Director, Environment and Society Programme, Chatham House

(6) Internal Audit Committee

The Internal Audit Committee consists of representative directors and the outside director. They make decisions and deliberations concerning important matters pertaining to internal audit, as delegated by the Board of Directors.

(7) Executive Committee

The Executive Committee consists of representative directors, executive directors, and all the managing executive officers. They make decisions and deliberations concerning important managerial matters, thereby taking responsibility for conducting flexible JBIC operations, as delegated by the Board of Directors. The committees below have been established as advisory bodies to the Executive Committee or as decision-making bodies on certain matters as delegated by the Executive Committee.

(i) Credit Committee

The Credit Committee makes decisions and deliberations concerning important matters on loans, equity participations, and guarantees by JBIC, as delegated by the Executive Committee.

(ii) Corporate Risk Management Committee

The Corporate Risk Management Committee makes decisions and deliberations concerning important matters pertaining to the corporate risk management of JBIC, as delegated by the Executive Committee.

(iii) Compliance and Customer Protection Management Committee

The Compliance and Customer Protection Management Committee makes decisions and deliberations concerning important matters pertaining to the compliance and customer protection management of JBIC, as delegated by the Executive Committee.

(iv) Personnel Committee

The Personnel Committee makes decisions and deliberations concerning important matters pertaining to the personnel of JBIC, as delegated by the Executive Committee.

(v) ALM Committee

The ALM Committee makes deliberations concerning important matters pertaining to the asset-liability management (ALM) of JBIC, as delegated by the Executive Committee and the Corporate Risk Management Committee.

(vi) Global Head Committee

The Global Head Committee makes deliberations concerning cross-cutting matters among internal groups, including operational policy for each country or region, as delegated by the Executive Committee.

(vii) Information Security and ICT Promotion Committee

The Information Security and ICT Promotion Committee makes deliberations concerning the use and management of JBIC's information assets, as well as important matters on information security, and cross-

divisional matters on ICT such as measures required for the ICT plans and policies which had been determined by the Board of Directors and Executive Committee, as delegated by the Executive Committee.

(viii) Sustainability Committee

The sustainability Committee makes deliberations concerning sustainability promotion, by discussing JBIC's policies, and other important measures in the field of sustainability.

Mission/Sector-Specific Group Structure

JBIC reconstituted its organization and adopted a mission/sector-specific group structure. Its objective is to strengthen the capacity to formulate projects by bringing together know-how and expertise in each sector and area, thereby facilitating JBIC to perform the functions in its mission more flexibly and strategically.

Specifically, the Corporate Planning Group; Credit,

Members of Board of Directors

(As of August 1, 2023)

Managing Director, Chairman of the Board of Directors	MAEDA Tadashi
Governor	HAYASHI Nobumitsu
Deputy Governor	AMAKAWA Kazuhiko
Executive Managing Director	HASHIYAMA Shigeto
Senior Managing Director	OISHI Ichiro
Senior Managing Director	TANAKA Kazuhiko
Senior Managing Director	TANIMOTO Masayuki
Managing Director (Outside Director)	KOIZUMI Shinichi
Managing Director (Outside Director)	KAWAMURA Yoshinori

Global Heads of the Groups

(As of August 1, 2023)

Global Head of Corporate Planning Group	KIKUCHI Yo (Managing Executive Officer)	Corporate Planning Group
Global Head of Credit, Assessment and Risk Management Group	TANAKA Eiji (Managing Executive Officer)	Credit, Assessment and Risk Management Group
Global Head of Treasury and Systems Group	OGAWA Kazunori (Managing Executive Officer)	Treasury and Systems Group
Global Head of Energy and Natural Resources Finance Group	AMANO Tatsushi (Managing Executive Officer)	Energy and Natural Resources Finance Group
Global Head of Infrastructure and Environment Finance Group	SEKINE Hiroki (Managing Executive Officer)	Infrastructure and Environment Finance Group
Global Head of Industry Finance Group	SASAKI Satoshi (Managing Executive Officer)	Industry Finance Group
Global Head of Equity Finance Group	UCHIDA Makoto (Managing Executive Officer)	Equity Finance Group

Member of Board of Directors Member of Internal Audit Committee Member of Executive Committee

Assessment and Risk Management Group; Treasury and Systems Group, Energy and Natural Resources Finance Group; Infrastructure and Environment Finance Group; Industry Finance Group; and Equity Finance Group were set up, with each Group having departments with special expertise.

For each Group, the responsible board member is appointed, and a managing executive officer serves as the Global Head of each Group. Each Group is managed in an integral manner under the Global Head of the Group in an effort to conduct rapid, flexible and efficient operations.

Fundamental Policy on Internal Control

Pursuant to the Companies Act, JBIC has put in place an institutional structure, including internal regulations, to ensure the proper conduct of its operations and activities, based on the Basic Policy for the Internal Control System decided by the Board of Directors.

Compliance

JBIC has set forth in its Code of Conduct to “Maintain high ethical standards and a law-abiding spirit. Observe our moral code as a JBIC member at all times.” In accordance with this Code of Conduct JBIC has formulated internal regulations concerning compliance and its implementation status under the Basic Policy for the Internal Control System. In addition, the Basic Principles of Compliance is formulated as follows.

- Recognizing JBIC’s role as a policy-based financial institution that undertakes international operations, directors and employees are keenly aware of the public missions and social responsibilities called for in the international community and in civil society. It is also well recognized that any act in violation of laws, regulations, or rules by its directors and employees will lead to denigrating confidence in JBIC as a whole and have a materially adverse effect on its operations. Attentive to these needs, JBIC is constantly pursuing toward compliance and operational integrity.
- Directors and employees recognize that JBIC has accountability to the general public regarding its operations and that it must make efforts to ensure the trust of the general public through appropriate information disclosure.
- JBIC shall not have any connections whatsoever with antisocial forces. It shall adopt an uncompromising attitude throughout its organization toward antisocial forces, and decisively reject all improper demands from such forces. This is essential for maintaining public trust in JBIC as well as for assuring the appropriateness and soundness of JBIC’s operations and it makes appropriate responses in collaboration with police and other relevant authorities.

Compliance System

In accordance with the above Basic Principles, JBIC thoroughly engages in compliance as detailed below. JBIC makes efforts to improve compliance, primarily through the Compliance and Customer Protection Management Committee and has established the Legal Affairs and Compliance Office as an integrated compliance management unit.

Each Group and Overseas Representative Office serving as a regional headquarter has an Integrated Compliance Officer, while each department and overseas representative office has a Compliance Officer for making efforts in compliance, such as fostering such awareness among JBIC employees.

To foster an in-depth understanding of compliance, JBIC makes good use of its Compliance Manual and provides training sessions for its management and staff members. It also develops a compliance program every fiscal year as a basis for making necessary compliance arrangements and providing relevant training, and follows up on the progress and completion.

In addition to the reporting procedures in its ordinary line of business, JBIC has put in place and is properly operating an internal reporting system such that it is capable of finding significant compliance issues at an early stage and taking appropriate remedial action.

Internal Audit

As an internal control system for overall operations, JBIC has appropriate internal audit procedures to review as well as evaluate their appropriateness and effectiveness and make recommendations to improve them. For these purposes, JBIC has the Internal Audit Committee, which includes the outside director, as a decision-making body independent of the Executive Committee that is responsible for conducting operations. There is also the Internal Audit Department, independent of the line departments and directly reporting to the Governor.

The Internal Audit Department exchanges relevant information and cooperates with the Audit and Supervisory Board Members and an Accounting Auditor for executing efficient internal audit.

2. Risk Management

In general, the operations of financial institutions involve various risks, including credit risk, market risk (such as interest rate and exchange rate risks), liquidity risk, and operational risk. As a policy-based financial institution, JBIC conducts financial operations to achieve policy objectives. Thus, JBIC differs from private financial institutions in its nature as well as the extent of risks involved in its operations and ways to deal with them. Nonetheless, recognizing the importance of appropriate risk management as a financial institution, JBIC has put in place an institutional system for risk management commensurate with different types of risks and for addressing integrated risk management.

More specifically, JBIC defines the objective of risk management as identifying, measuring, and monitoring various risks JBIC is exposed to in the process of conducting operations to ensure the soundness and integrity of operations and increase transparency. For this purpose, JBIC has designated the staff responsible for managing various risks and has a department

working on the overall risk management. In addition, there are the Corporate Risk Management Committee and the ALM Committee which hold discussions and make considerations for the effective functioning of risk management. JBIC has also set up the Risk Advisory Committee, which consists of external experts, to provide the JBIC Board of Directors with advice on the risk management and assessment system with respect to large-lot debtors and on issues referred to by the JBIC Board of Directors with respect to risks associated with large-scale projects.

JBIC has conducted risk management separated into the Ordinary Operations Account and Special Operations Account. The following sections describe how JBIC manages the various risks it faces in conducting operations as a policy-based financial institution.

Note: Please refer to JBIC's Initiatives Related to Climate Change (Information Disclosure Based on TCFD Recommendations) on page 40.

■ Enterprise Risk Management

To ensure the soundness and appropriateness of its operations as a policy-based financial institution, JBIC undertakes enterprise risk management that comprehensively ascertains the risks to which JBIC is exposed and utilizes Top Risk management and stress tests as its main methods.

Top Risk Management

JBIC defines Top Risks as risk events that will significantly impact JBIC when they become apparent and require particular attention. Top Risks are designated based on risk factors that are assumed in view of current international circumstances and the characteristics of JBIC's portfolio, and JBIC regularly and continuously monitors these risks.

Through Top Risk management, JBIC has established a risk management framework that enables

timely and appropriate ascertaining of risks that are emerging along with changes in the environment as well as the impact of these risks on JBIC's credit portfolio and fund procurement and allows for flexible responses.

Stress Tests

JBIC regularly implements stress tests as a forward-looking risk management tool to identify JBIC's financial conditions including capital adequacy and to formulate its business operation plans. Stress scenarios are developed that are suited to the characteristics of JBIC's portfolio. In developing the scenarios, JBIC analyzes historical events and hypothetical future events that take into account macroeconomic changes and emerging risks in the present and the foreseeable future.

■ Credit Risk

Credit risk refers to the potential loss from a decline or loss of the value of credit assets due to deterioration in the financial conditions of a debtor. This risk is inherent in JBIC's operations as it primarily engages in lending activities. Credit risk exposure to JBIC may be classified into: sovereign risk, which involves financing foreign governments; corporate risk, which involves financing business firms; project risk, which occurs when a project financed in project financing—a financing structure in which a loan is primarily secured on the cash flow generated from the project—fails

to generate the planned cash flow; and country risk, which involves financing foreign firms as well as projects located in foreign countries (collateral risk arising from political and economic situations of countries where debtor companies are located or projects are under way). Given the very nature of financial support JBIC provides for promotion of overseas development and securement of strategically important resources to Japan, for maintaining and improving the international competitiveness of Japanese industries, and for promoting the overseas business for preserving

the global environment, such as preventing global warming, JBIC frequently extends loans to foreign governments, government agencies, and companies. Therefore, sovereign and country risks account for a considerable share of the credit risks accompanying JBIC's operations. For credit risk, JBIC performs credit risk management for individual borrowers during each credit provision process and undertakes portfolio credit risk management by quantifying credit risks.

Managing Credit Risk

The cornerstone of credit risk management at JBIC is the evaluation of an individual borrower's creditworthiness in the process leading to credit approval. When a new loan application is being processed, the relevant finance department and the Credit Department collect and analyze information on the borrower. The overseas representative offices also play a part in collecting information on foreign governments and companies. It is based on this information and its analysis that credit appraisal takes place, with checks and balances at work between these different departments throughout this process, leading to the final decision by management.

In providing credit for foreign governments and companies, JBIC makes the most of its unique position as an official financier, as it exchanges views and information with the governments and relevant authorities in the recipient countries, multilateral institutions such as the International Monetary Fund (IMF) and the World Bank, other official export credit agencies and, furthermore, with private financial institutions in developed countries. Using all these channels, JBIC evaluates sovereign and country risks based on a broad range of information collected on borrowing governments, government agencies, and political and economic conditions in their countries.

In providing credit for domestic and foreign companies, there is a need to evaluate their creditworthiness and the appropriateness of the collateral they offer. In particular, for credit provision related to overseas projects, credit evaluation involves checking and examining the certainty of conducting transactions to be financed, feasibility studies of the projects, and the industry in which the borrower operates.

Market Risk

Market risk refers to the potential loss from changes in the value of assets and liabilities as a result of fluctuations in interest rates and foreign exchange rates. JBIC manages specific market risks as follows.

Exchange Rate Risk

Foreign currency-denominated loans involve the risk associated with exchange rate fluctuations. JBIC

Internal Credit Rating

JBIC has established an internal credit rating system which covers, in principle, all the borrowers. Internal credit ratings are the cornerstone of credit risk management, being used for conducting individual credit appraisals and quantifying credit risks.

Internal Assessment of Asset Portfolio

JBIC is undertaking the internal assessment of its loan portfolio so that the characteristics of its loan assets will be accurately reflected on its assessment. In this process, the first-stage assessment is conducted by the relevant financing departments, while the second-stage assessment is conducted by the Credit Department and the Country Credit Department, which is then inspected by the Audit Department. The results of internal assessment conducted on the portfolio are not only used internally for the continuous reviews of the loan portfolio but are also reflected in the disclosure of asset quality to enhance the transparency of JBIC's financial position.

Quantifying Credit Risk

In addition to individual credit risk management, JBIC is working on quantifying credit risks with a view to evaluating the risk of the overall loan portfolio.

JBIC quantifies credit risk utilizing its own proprietary credit risk quantification model that takes into account the characteristics of JBIC's loan portfolio, which holds a significant proportion of long-term loans and loans involving sovereign and country risks and mechanisms for securing assets, such as the Paris Club¹, a unique international support framework for debt management by official creditor countries. JBIC uses this quantified credit risk for credit portfolio analysis encompassing the degree of credit concentration and also for internal control.

1. The Paris Club is an informal group of official creditors whose role is to find coordinated and sustainable solutions to the payment difficulties experienced by debtor nations. Since the first meeting took place in 1956 to resolve the debt problem of Argentina, the meeting has been held in Paris, with the French Treasury acting as its secretariat. Hence, it has come to be called the Paris Club.

has a consistent policy of hedging the full amount of such exposure through currency swaps and forward exchange transactions.

Interest Rate Risk

Funding for yen-denominated loans is mainly managed at fixed-rate interest. Interest rate risk for yen-denominated loans, however, is limited since

derivative transactions such as interest rate swaps are used to hedge interest rate risk for portions of loans that are thought to have high exposures to interest rate fluctuation risk. Interest rate risks associated with foreign currency-denominated loan operations and relevant fundings are generally hedged by managing the funds with floating interest rates with the use of interest rate swap transactions. In addition, JBIC carefully calculates and analyzes projections of its future asset/liability structure and profits and losses.

Derivatives Transactions

(1) Basic Policy for Derivatives Transactions

JBIC engages in derivatives transactions exclusively for the purpose of hedging exchange rate and interest rate risks.

(2) Transactions

Derivatives transactions of JBIC include interest rate and currency swaps and forward exchange contracts. The following table gives a summary of these transactions as of March 31, 2023.

Credit Risk of Derivatives, etc.

(As of March 31, 2023; unit: 100 million yen)

	Contract Amounts / Notional Amounts	Credit Risk Amounts	Market Value
Interest Rate Swaps	65,485	638	(3,488)
Currency Swaps	43,296		(3,391)
Forward Exchange Contracts	55	—	0
Credit Risk Reductions through Netting	—	—	—
Total	108,837	638	(6,880)

"The credit risk amounts" are calculated under Uniform International Standards in accordance with the Banking Act of Japan and the related regulations.

(3) Risks Involved in Derivatives Transactions

Derivatives transactions involve the following risks.

◆ Counterparty Credit Risk

The potential loss from the failure of a counterparty to perform its obligations in accordance with the terms and conditions of the contract governing transactions due to bankruptcy or its deteriorating business performance.

◆ Market Risk

The potential loss from changes in the market value of financial products due to fluctuations in interest rates or exchange rates in the market.

(4) Measures to Address These Risks

◆ Counterparty Credit Risk

JBIC constantly monitors the fair value of a derivative in conducting a transaction with each counterparty, credit risk exposure to it, and its creditworthiness. Such information is then used to assess the eligibility of the counterparty.

Regarding the fair value of a derivative in conducting a transaction and credit risk exposure, JBIC performs detailed management by taking into account collateral transfer based on a collateral contract with the counterparty.

◆ Market Risk

JBIC utilizes derivatives transactions exclusively for the purpose of hedging. Therefore, the market risk on derivatives transactions and the risk on hedged (lending or funding) transactions, in principle, offset each other.

■ Liquidity Risk

Liquidity risk refers to the potential loss resulting from difficulties in funding due to a maturity mismatch between financing and funding caused by unexpected cash-outs or from being forced to fund at an interest rate significantly higher than in normal circumstances, as well as the potential loss resulting from a failure to make transactions in the market due to market turmoil or from being forced to make transactions at a significantly disadvantageous price compared to

normal circumstances.

JBIC is minimizing liquidity risk through effective cash flow management and the diversification of its funding sources, including borrowings under the Fiscal Investment and Loan Program (FILP), government-guaranteed bond issues in international capital markets, and FILP agency bond issues in the domestic capital market.

■ Operational Risk

Operational risk refers to the potential loss resulting from inadequate or failed internal processes, people, and systems or from external events. Apart from administrative, computer system, and information security risks, JBIC recognizes that its operations involve various direct and indirect risks. JBIC will proactively identify, assess, and manage such risks.

Administrative Risk

Administrative risk refers to the potential loss resulting from the neglect by officers and employees to conduct administrative work properly, accidents caused by them, and violation of laws and regulations caused by them, etc., conducted in the course of the administrative work process.

JBIC has been minimizing this risk by ensuring sound operations through scrupulous checks on work processes, creating operational manuals, improving training programs, and streamlining and adopting systematic procedures.

Computer System Risk

Computer system risk refers to the potential loss from a breakdown or malfunction in computer systems as well as from their misuse. JBIC has been minimizing computer system risk by increasing its readiness to respond effectively to emergency situations. Specifically, (a) measures have been taken to prevent system malfunctions and leakage of client information; and (b) contingency plans have been prepared to respond to system malfunctions caused by accidents and other causes, and disaster-response drills have been conducted.

Information Security Risk

Information security risk refers to the potential loss due to threats to the confidentiality, integrity, and availability of information assets. JBIC has taken all possible measures to maintain information security by establishing information security regulations and a structure encompassing information management as well as by providing comprehensive education to management and staff members.

3. Public Information and Disclosure

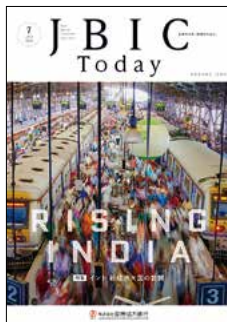
JBIC is providing and disseminating information to a broad range of the domestic and overseas public in an effort to promote further understanding of its operations and activities.

The JBIC Information Center at the Head Office and the Osaka Branch produce various brochures, annual reports, public relations magazines, and other materials available to the general public. In addition, a variety of information about JBIC is provided publicly in Japan and overseas through the JBIC website (<https://www.jbic.go.jp/en/>).

Publications

JBIC publishes its annual operations and activities as well as its financial conditions in various disclosure materials, including annual reports, business reports, financial statements, and Form 18-K, which is submitted to the U.S. Securities and Exchange Commission.

Other publications available to the public include *JBIC Today*, a public information magazine that reports on JBIC's latest activities and topics on its operations and other relevant issues; *JBIC Profile: Role and Function*, a brochure describing JBIC operations.



JBIC Today

Website

The website provides access to JBIC information, including its financial instruments, press releases, invitations to seminars, reports on various studies, annual reports, various brochures, IR information for investors, and various other types of information.



Social Media Networks (SNS)

JBIC has established Facebook and Instagram as its official SNS. We ask for your “likes” and “follow.”



<https://www.facebook.com/JBIC.Japan/>



https://www.instagram.com/jbic_official/

Information Dissemination for the Media

Aside from information disseminated through various publications, the website, and other means, JBIC informs the news media about its operations and activities through press conferences, meetings, etc.

Disseminating Information from Overseas Representative Offices

JBIC's overseas representative offices are actively contributing reports and articles to the news media to provide information, such as political, economic, and business trends in overseas development, etc.

Disclosure

JBIC discloses to the public its operational and financial information to promote further understanding of its current activities, as follows.

Source of Information	Access
Report on Settlement of Accounts	<ul style="list-style-type: none"> Available at the Head Office and the Osaka Branch Distributed to the National Diet Library and economic organizations, etc.
Annual Report, Public Relations Magazine, etc.	<ul style="list-style-type: none"> Available at the Head Office, the Osaka Branch, and Representative Offices Distributed to interested persons/institutions
Website: <ul style="list-style-type: none"> Type of Business Operations, Operational Results, Overview of Organization, Financial Composition, etc. 	<ul style="list-style-type: none"> On the internet Address: https://www.jbic.go.jp/en/