

**Dallas to Houston
High-Speed Rail Project
Project Footprint
Segment 4
Sheet 381 of 536**

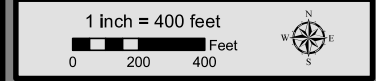
Legend

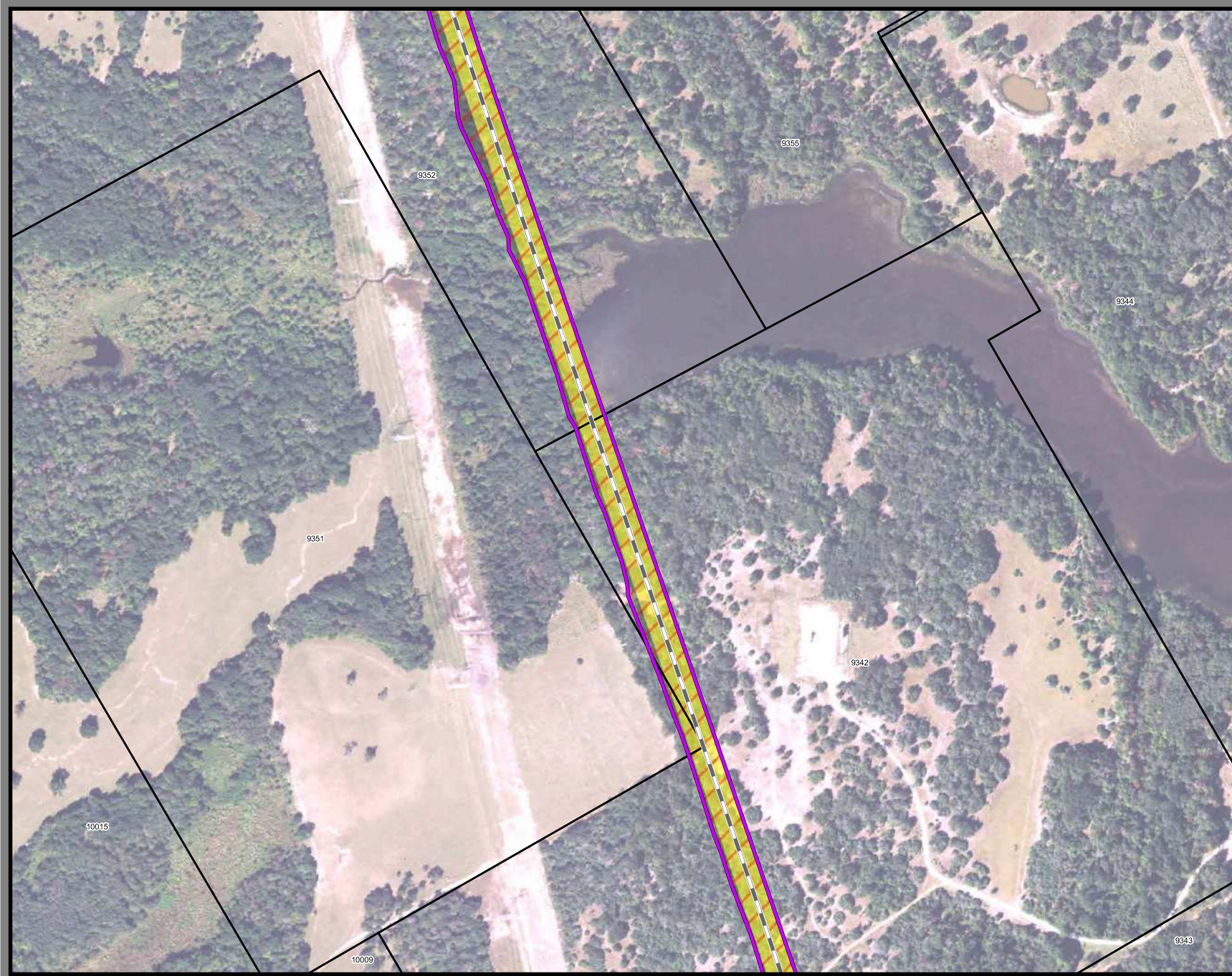
Track Configuration	Limits of Disturbance by Discipline
— Viaduct	Yellow Rail
— Embankment	Grey Highway
— Cut	Pink Train Maintenance Facility
Limits of Disturbance by Segment	Brown Maintenance of Way Facility
Green Segment 1	Cyan Systems*
Pink Segment 2A	Blue Hydro/Drainage
Yellow Segment 2B	Green Station
Cyan Segment 3A	Purple Structures
Orange Segment 3B	Pink Temporary Construction
Blue Segment 3C	
Purple Segment 4	
Green Segment 5	
Limits of Disturbance by Impact Type	
Red diagonal lines Permanent	
Green diagonal lines Temporary	
Black line Railroad	
Black outline Property Boundary	
Grey outline County Boundary	

Property ID - This is a unique identifier that corresponds with the Property Identification number.

*Systems data includes associated systems and facilities for the HSR, such as ATP, communication systems, SP, SSP and TPSS.

Data Sources: Parcel Data - Contract Land Staff - April 26, 2017
Aerial Imagery: USDA NAIP 2014





**Dallas to Houston
High-Speed Rail Project
Project Footprint
Segment 4
Sheet 382 of 536**

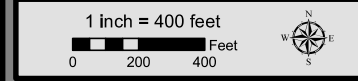
Legend

Track Configuration	Limits of Disturbance by Discipline
— Viaduct	Yellow Rail
— Embankment	Grey Highway
— Cut	Purple Train Maintenance Facility
Limits of Disturbance by Segment	Brown Maintenance of Way Facility
Green Segment 1	Cyan Systems*
Magenta Segment 2A	Orange Utilities
Yellow Segment 2B	Blue Hydro/Drainage
Cyan Segment 3A	Green Station
Orange Segment 3B	Purple Structures
Blue Segment 3C	Pink Temporary Construction
Purple Segment 4	
Light Green Segment 5	
Limits of Disturbance by Impact Type	
Red hatched Permanent	
Green hatched Temporary	
Black line Railroad	
Black outline Property Boundary	
Grey outline County Boundary	

Property ID -This is a unique identifier that corresponds with the Property Identification number.

*Systems data includes associated systems and facilities for the HSR, such as ATP, communication systems, SP, SSP and TPSS.

Data Sources: Parcel Data - Contract Land Staff - April 26, 2017
Aerial Imagery: USDA NAIP 2014





**Dallas to Houston
High-Speed Rail Project**
Project Footprint
Segment 4
Sheet 383 of 536

Legend

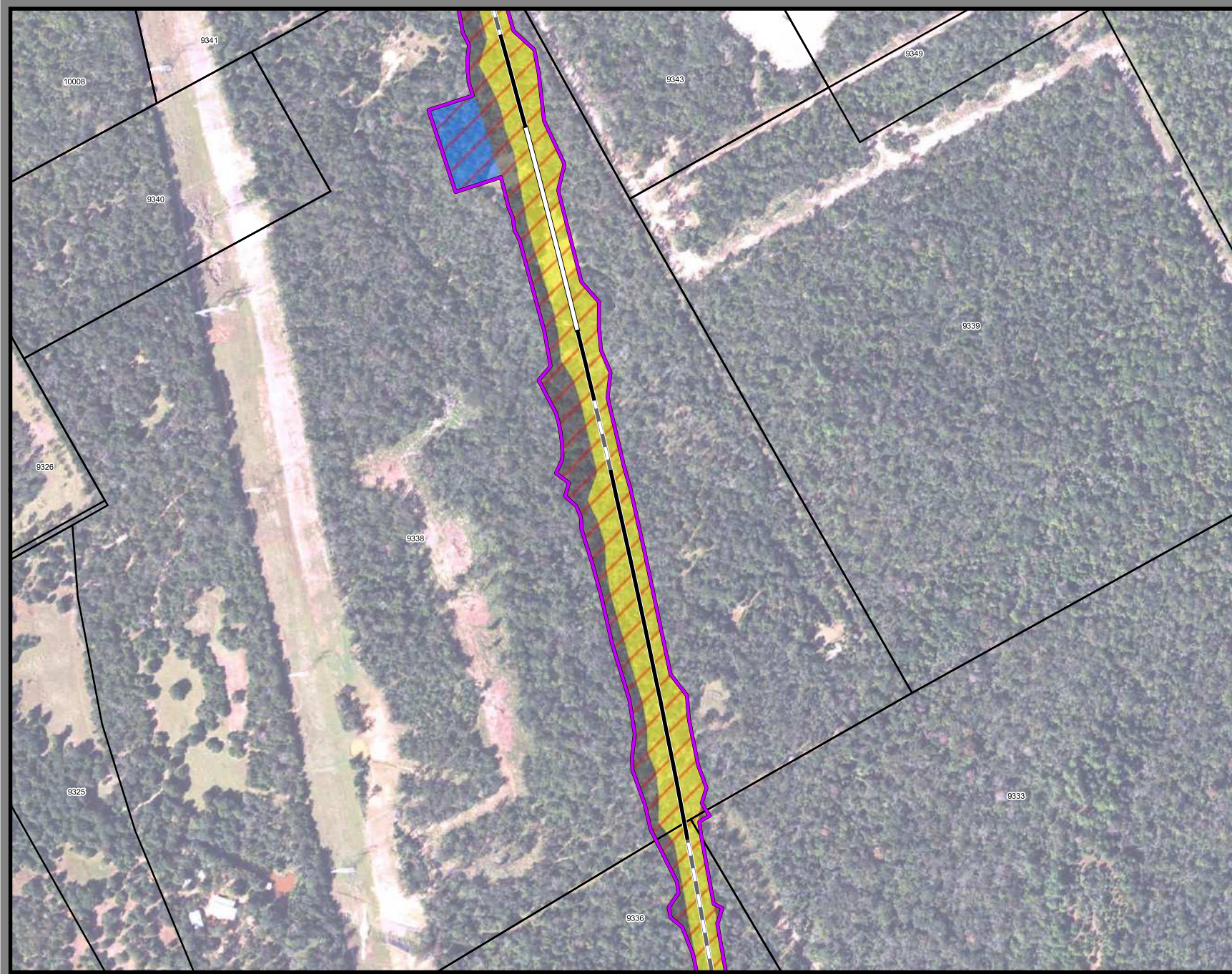
Track Configuration	Limits of Disturbance by Discipline
— Viaduct	Yellow Rail
— Embankment	Grey Highway
— Cut	Pink Train Maintenance Facility
Limits of Disturbance by Segment	Brown Maintenance of Way Facility
Green Segment 1	Cyan Systems*
Pink Segment 2A	Orange Utilities
Yellow Segment 2B	Blue Hydro/Drainage
Cyan Segment 3A	Green Station
Orange Segment 3B	Purple Structures
Blue Segment 3C	Pink Temporary Construction
Purple Segment 4	
Green Segment 5	
Limits of Disturbance by Impact Type	
Red/White Diagonal Permanent	
Green/White Diagonal Temporary	
Black Railroad	
Black Property Boundary	
Grey County Boundary	

Property ID - This is a unique identifier that corresponds with the Property Identification number.

*Systems data includes associated systems and facilities for the HSR, such as ATP, communication systems, SP, SSP and TPSS.

Data Sources: Parcel Data - Contract Land Staff - April 26, 2017
Aerial Imagery: USDA NAIP 2014





**Dallas to Houston
High-Speed Rail Project**
Project Footprint
Segment 4
Sheet 384 of 536

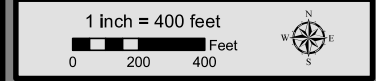
Legend

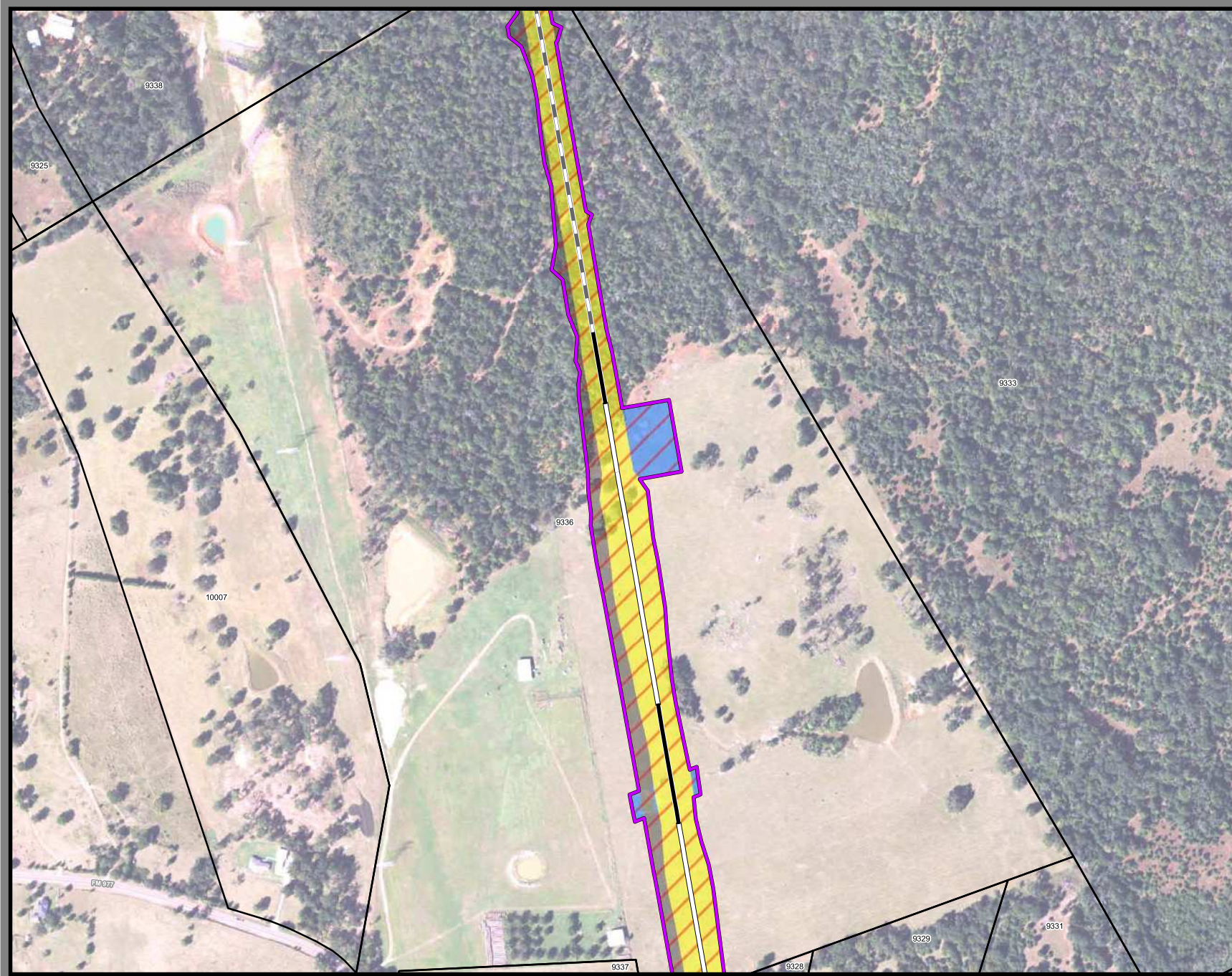
Track Configuration	Limits of Disturbance by Discipline
— Viaduct	Yellow Rail
— Embankment	Grey Highway
— Cut	Pink Train Maintenance Facility
Limits of Disturbance by Segment	Brown Maintenance of Way Facility
Green Segment 1	Cyan Systems*
Pink Segment 2A	Orange Utilities
Yellow Segment 2B	Blue Hydro/Drainage
Cyan Segment 3A	Green Station
Orange Segment 3B	Purple Structures
Blue Segment 3C	Pink Temporary Construction
Purple Segment 4	
Green Segment 5	
Limits of Disturbance by Impact Type	
Red diagonal lines Permanent	
Green diagonal lines Temporary	
Black line with cross-ticks Railroad	
Black line Property Boundary	
Grey line County Boundary	

Property ID - This is a unique identifier that corresponds with the Property Identification number.

*Systems data includes associated systems and facilities for the HSR, such as ATP, communication systems, SP, SSP and TPSS.

Data Sources: Parcel Data - Contract Land Staff - April 26, 2017
Aerial Imagery: USDA NAIP 2014





**Dallas to Houston
High-Speed Rail Project**
Project Footprint
Segment 4
Sheet 385 of 536

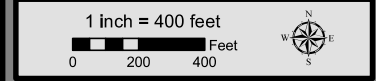
Legend

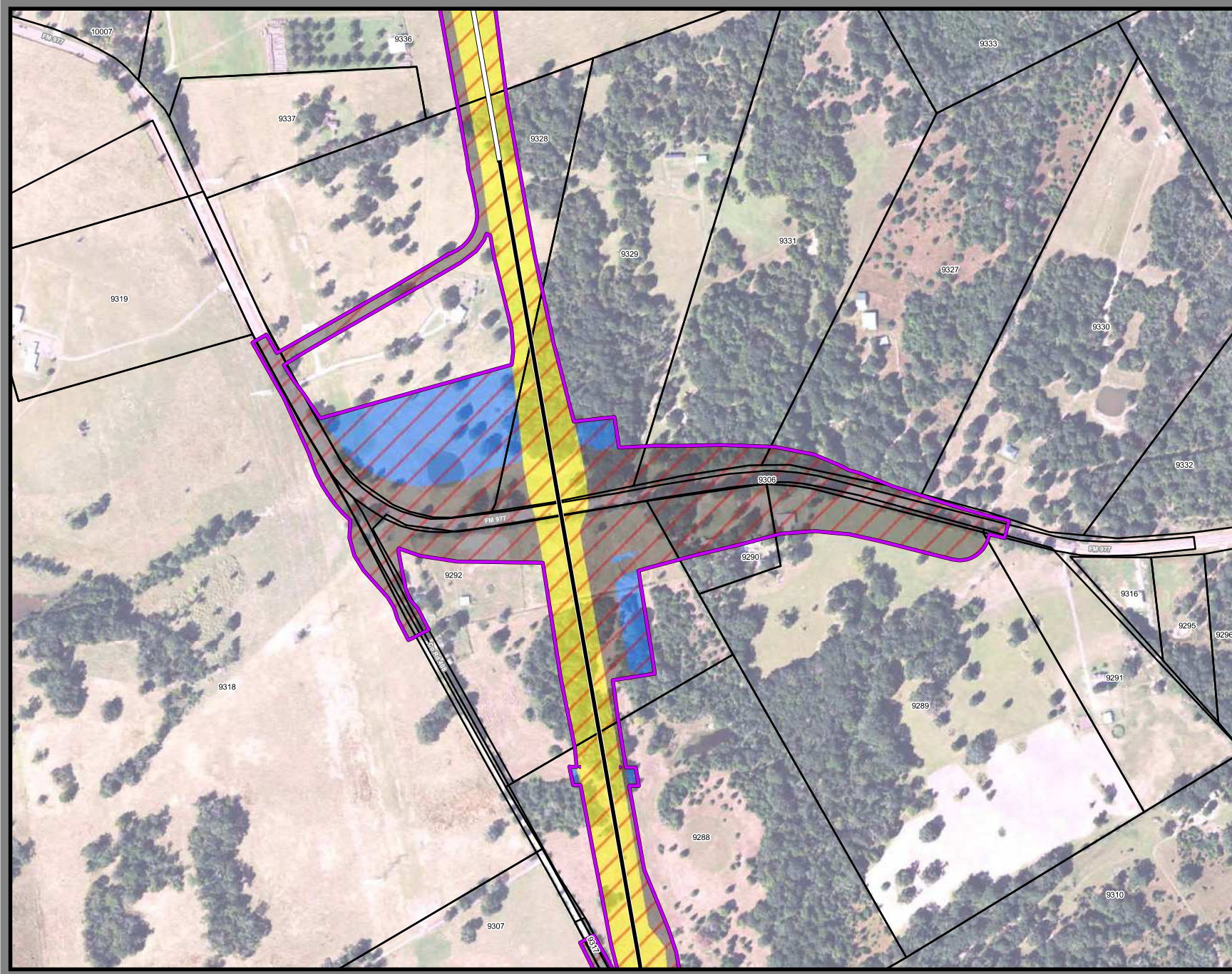
Track Configuration	Limits of Disturbance by Discipline
— Viaduct	Yellow Rail
— Embankment	Grey Highway
— Cut	Pink Train Maintenance Facility
Limits of Disturbance by Segment	Brown Maintenance of Way Facility
Green Segment 1	Cyan Systems*
Pink Segment 2A	Orange Utilities
Yellow Segment 2B	Blue Hydro/Drainage
Cyan Segment 3A	Green Station
Orange Segment 3B	Purple Structures
Blue Segment 3C	Pink Temporary Construction
Purple Segment 4	
Green Segment 5	
Limits of Disturbance by Impact Type	
Red/White Permanent	
Green/White Temporary	
Black Railroad	
Black Property Boundary	
Grey County Boundary	

Property ID - This is a unique identifier that corresponds with the Property Identification number.

*Systems data includes associated systems and facilities for the HSR, such as ATP, communication systems, SP, SSP and TPSS.

Data Sources: Parcel Data - Contract Land Staff - April 26, 2017
Aerial Imagery: USDA NAIP 2014





**Dallas to Houston
High-Speed Rail Project
Project Footprint
Segment 4
Sheet 386 of 536**

Legend

Track Configuration	Limits of Disturbance by Discipline
— Viaduct	Yellow Rail
— Embankment	Grey Highway
— Cut	Purple Train Maintenance Facility
Limits of Disturbance by Segment	Brown Maintenance of Way Facility
Green Segment 1	Light Blue Systems*
Purple Segment 2A	Orange Utilities
Yellow Segment 2B	Blue Hydro/Drainage
Light Blue Segment 3A	Green Station
Orange Segment 3B	Pink Structures
Blue Segment 3C	Light Pink Temporary Construction
Dark Blue Segment 4	
Purple Segment 5	
Limits of Disturbance by Impact Type	
Red Hatched Permanent	
Green Hatched Temporary	
Black Railroad	
Black Property Boundary	
Grey County Boundary	

Property ID - This is a unique identifier that corresponds with the Property Identification number.

*Systems data includes associated systems and facilities for the HSR, such as ATP, communication systems, SP, SSP and TPSS.

Data Sources: Parcel Data - Contract Land Staff - April 26, 2017
Aerial Imagery: USDA NAIP 2014





**Dallas to Houston
High-Speed Rail Project**
Project Rail Footprint
Segment 4
Sheet 387 of 536

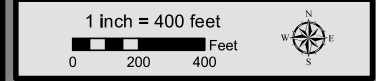
Legend

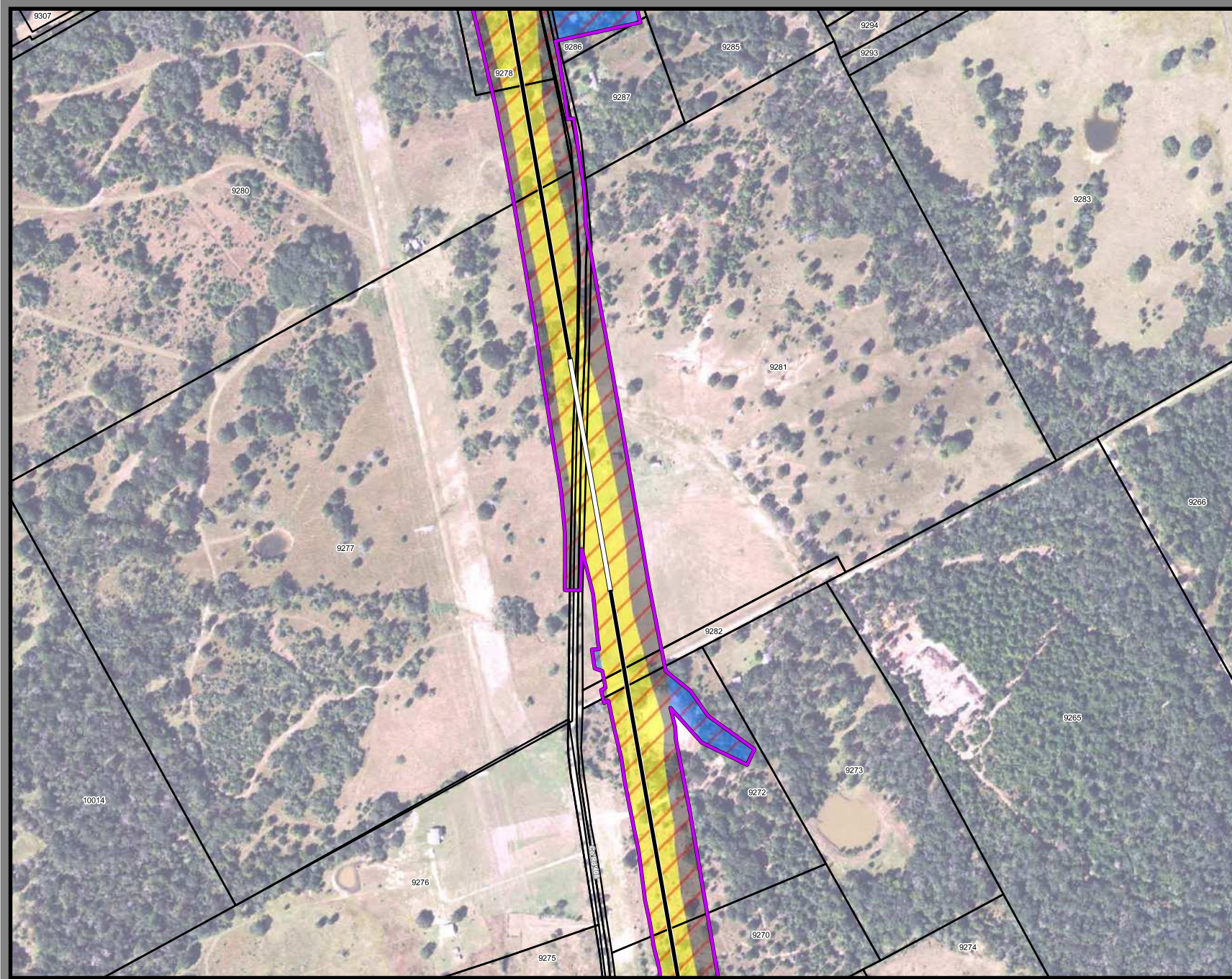
Track Configuration	Limits of Disturbance by Discipline
— Viaduct	Yellow Rail
— Embankment	Grey Highway
— Cut	Pink Train Maintenance Facility
Limits of Disturbance by Segment	Brown Maintenance of Way Facility
Green Segment 1	Cyan Systems*
Purple Segment 2A	Orange Utilities
Yellow Segment 2B	Blue Hydro/Drainage
Cyan Segment 3A	Green Station
Orange Segment 3B	Pink Structures
Blue Segment 3C	Light Pink Temporary Construction
Purple Segment 4	
Green Segment 5	
Limits of Disturbance by Impact Type	
Diagonal hatching Permanent	
Light green hatching Temporary	
Black line Railroad	
Black outline Property Boundary	
Dashed line County Boundary	

Property ID - This is a unique identifier that corresponds with the Property Identification number.

*Systems data includes associated systems and facilities for the HSR, such as ATP, communication systems, SP, SSP and TPSS.

Data Sources: Parcel Data - Contract Land Staff - April 26, 2017
Aerial Imagery: USDA NAIP 2014





**Dallas to Houston
High-Speed Rail Project**
Project Footprint
Segment 4
Sheet 388 of 536

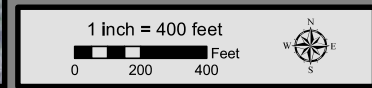
Legend

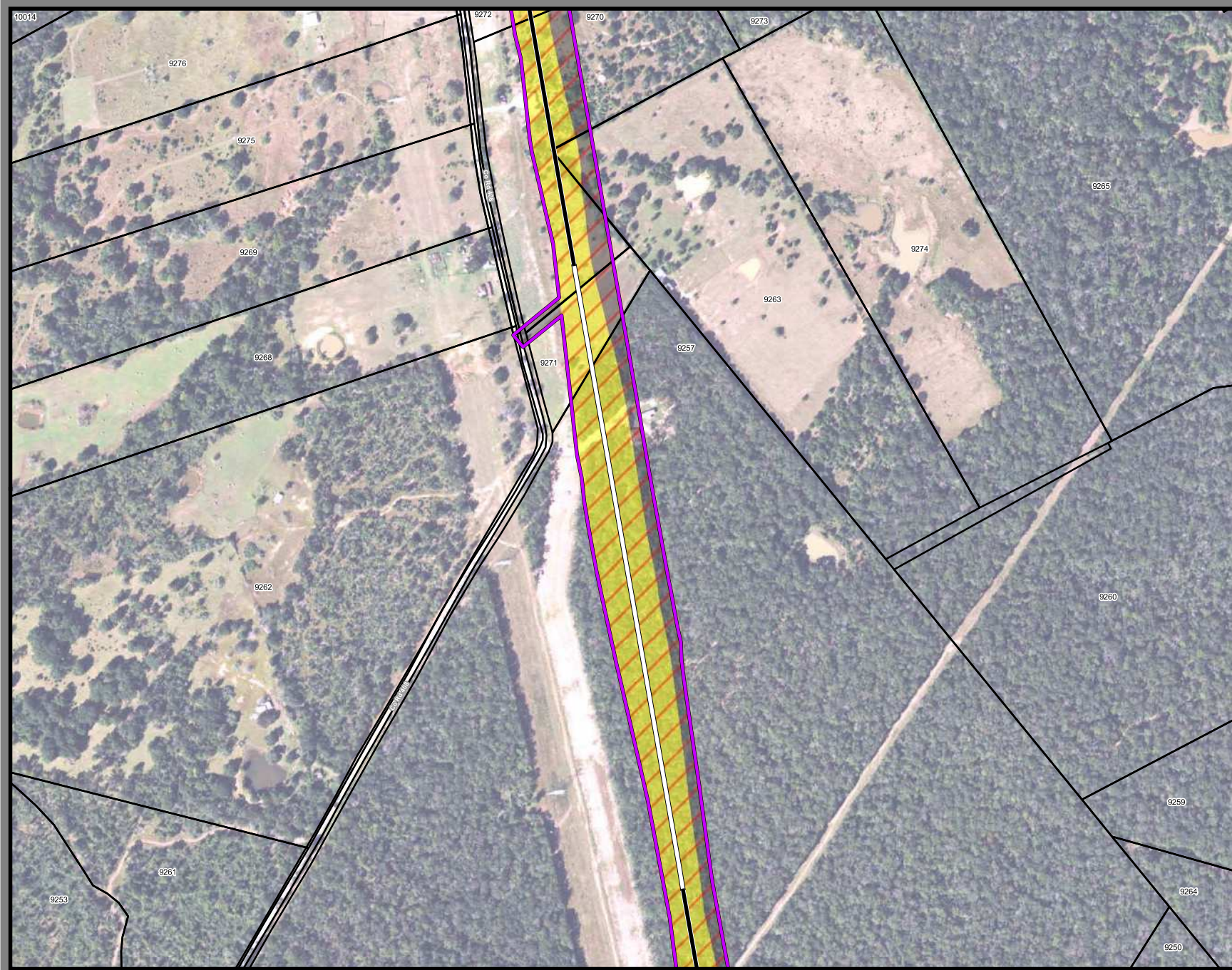
Track Configuration	Limits of Disturbance by Discipline
— Viaduct	Yellow Rail
— Embankment	Grey Highway
— Cut	Purple Train Maintenance Facility
Limits of Disturbance by Segment	Brown Maintenance of Way Facility
Green Segment 1	Cyan Systems*
Purple Segment 2A	Orange Utilities
Yellow Segment 2B	Blue Hydro/Drainage
Cyan Segment 3A	Green Station
Orange Segment 3B	Purple Structures
Blue Segment 3C	Pink Temporary Construction
Purple Segment 4	
Green Segment 5	
Limits of Disturbance by Impact Type	
Red hatched Permanent	
Green hatched Temporary	
Black Railroad	
Black Property Boundary	
Grey County Boundary	

Property ID - This is a unique identifier that corresponds with the Property Identification number.

*Systems data includes associated systems and facilities for the HSR, such as ATP, communication systems, SP, SSP and TPSS.

Data Sources: Parcel Data - Contract Land Staff - April 26, 2017
Aerial Imagery: USDA NAIP 2014





**Dallas to Houston
High-Speed Rail Project**
Project Footprint
Segment 4
Sheet 389 of 536

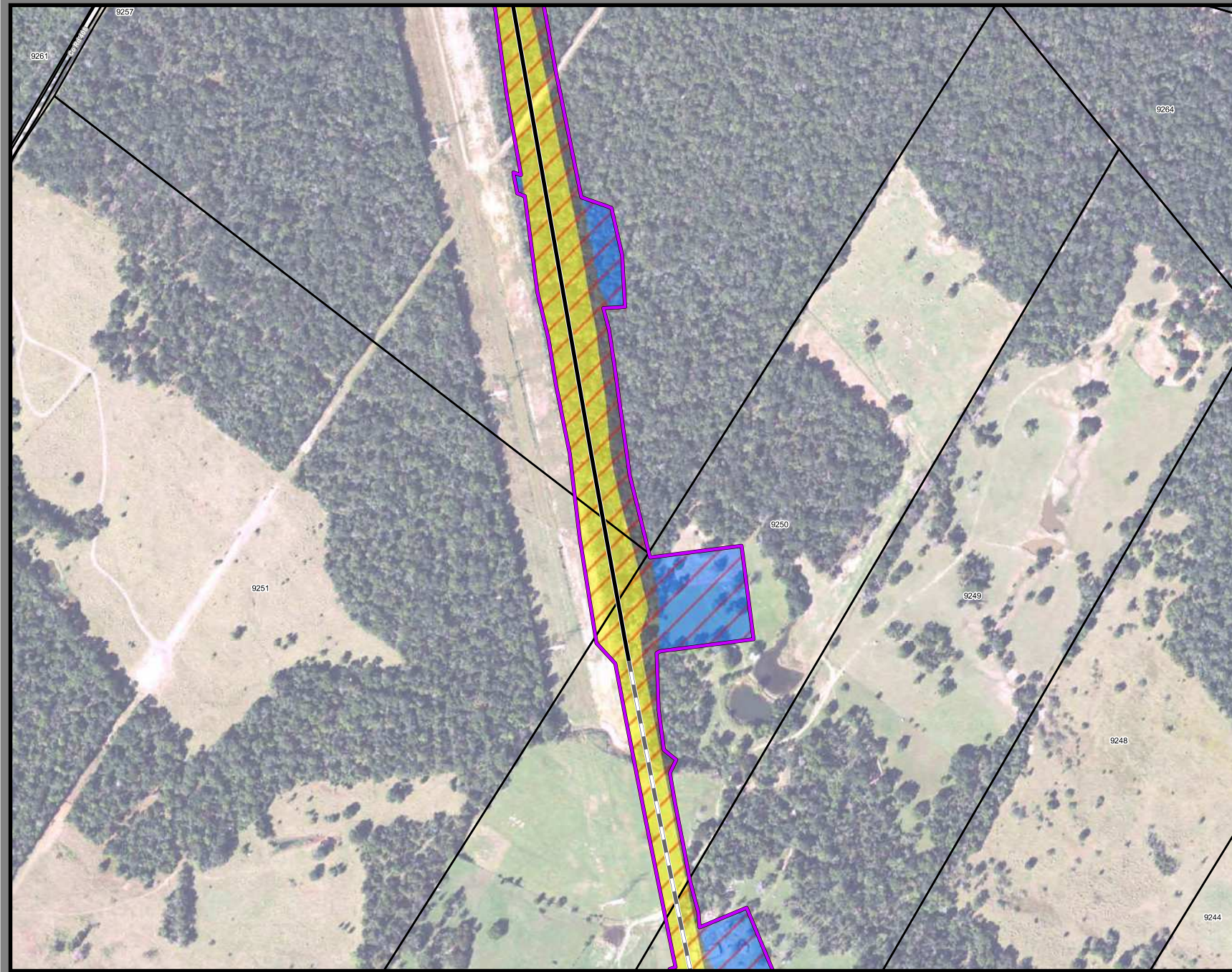
- Legend**
- | | |
|---|--|
| Track Configuration | Limits of Disturbance by Discipline |
| — Viaduct | Yellow Rail |
| — Embankment | Grey Highway |
| — Cut | Purple Train Maintenance Facility |
| Limits of Disturbance by Segment | Brown Maintenance of Way Facility |
| Green Segment 1 | Cyan Systems* |
| Purple Segment 2A | Orange Utilities |
| Yellow Segment 2B | Blue Hydro/Drainage |
| Cyan Segment 3A | Green Station |
| Orange Segment 3B | Pink Structures |
| Blue Segment 3C | Light Blue Temporary Construction |
| Purple Segment 4 | |
| Green Segment 5 | |
| Limits of Disturbance by Impact Type | |
| Red/White Diagonal Permanent | |
| Green/White Diagonal Temporary | |
| Black Railroad | |
| Black Property Boundary | |
| Grey County Boundary | |

Property ID - This is a unique identifier that corresponds with the Property Identification number.

*Systems data includes associated systems and facilities for the HSR, such as ATP, communication systems, SP, SSP and TPSS.

Data Sources: Parcel Data - Contract Land Staff - April 26, 2017
Aerial Imagery: USDA NAIP 2014





**Dallas to Houston
High-Speed Rail Project**
Project Footprint
Segment 4
Sheet 390 of 536

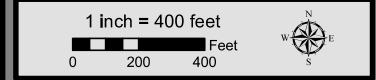
Legend

Track Configuration	Limits of Disturbance by Discipline
— Viaduct	Yellow Rail
— Embankment	Grey Highway
— Cut	Pink Train Maintenance Facility
Limits of Disturbance by Segment	Brown Maintenance of Way Facility
Green Segment 1	Cyan Systems*
Purple Segment 2A	Orange Utilities
Yellow Segment 2B	Blue Hydro/Drainage
Cyan Segment 3A	Green Station
Orange Segment 3B	Pink Structures
Blue Segment 3C	Light Pink Temporary Construction
Purple Segment 4	
Green Segment 5	
Limits of Disturbance by Impact Type	
Red hatched Permanent	
Green hatched Temporary	
Black Railroad	
Black Property Boundary	
Grey County Boundary	

Property ID - This is a unique identifier that corresponds with the Property Identification number.

*Systems data includes associated systems and facilities for the HSR, such as ATP, communication systems, SP, SSP and TPSS.

Data Sources: Parcel Data - Contract Land Staff - April 26, 2017
Aerial Imagery: USDA NAIP 2014





**Dallas to Houston
High-Speed Rail Project
Project Footprint
Segment 4
Sheet 391 of 536**

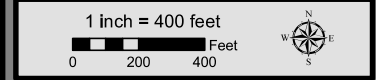
Legend

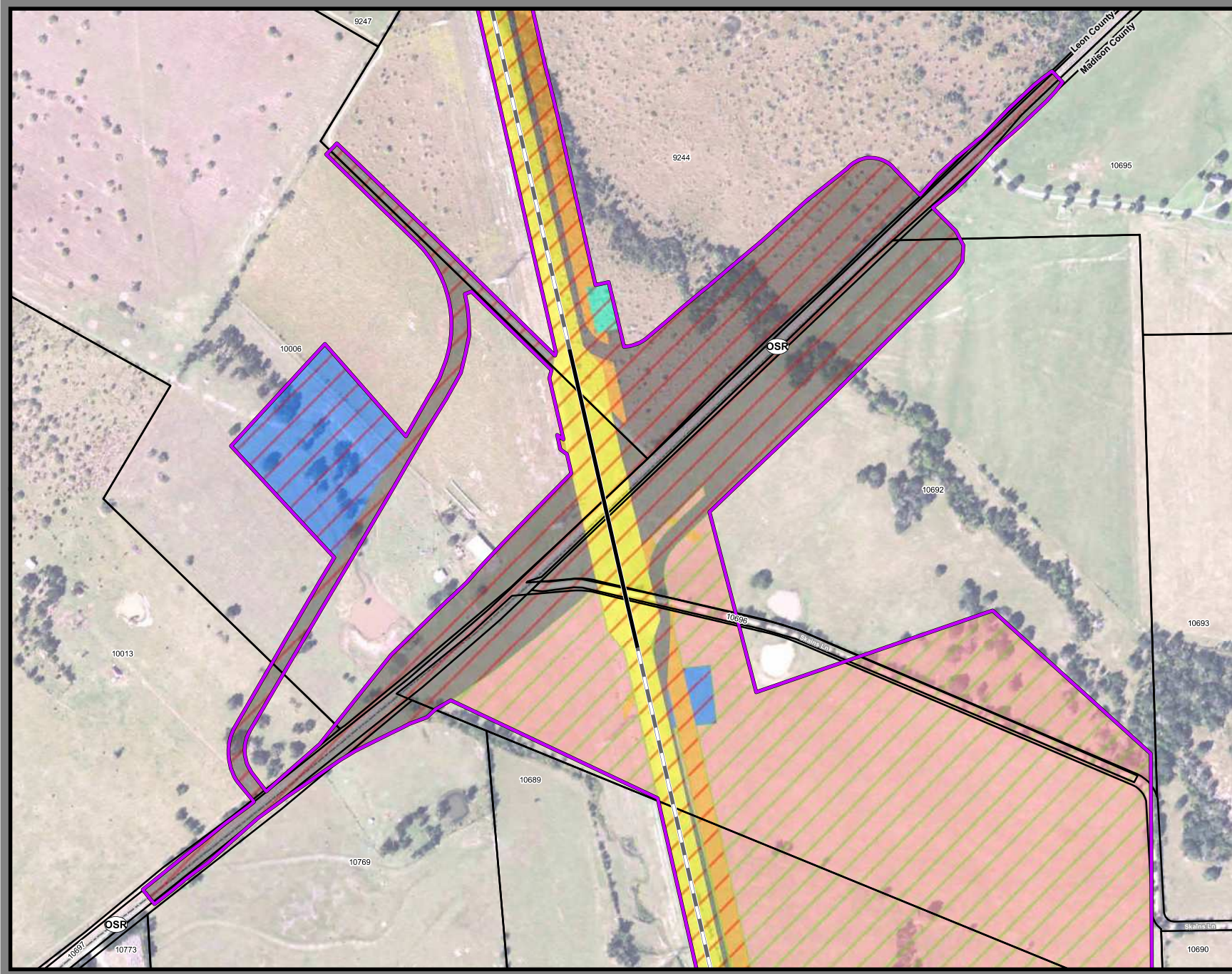
Track Configuration	Limits of Disturbance by Discipline
— Viaduct	Yellow Rail
— Embankment	Grey Highway
— Cut	Purple Train Maintenance Facility
Limits of Disturbance by Segment	Brown Maintenance of Way Facility
Green Segment 1	Cyan Systems*
Magenta Segment 2A	Orange Utilities
Yellow Segment 2B	Blue Hydro/Drainage
Cyan Segment 3A	Green Station
Orange Segment 3B	Purple Structures
Blue Segment 3C	Pink Temporary Construction
Purple Segment 4	
Light Green Segment 5	
Limits of Disturbance by Impact Type	
Red/White Diagonal Permanent	
Green/White Diagonal Temporary	
Black Railroad	
Black Property Boundary	
Grey County Boundary	

Property ID -This is a unique identifier that corresponds with the Property Identification number.

*Systems data includes associated systems and facilities for the HSR, such as ATP, communication systems, SP, SSP and TPSS.

Data Sources: Parcel Data - Contract Land Staff - April 26, 2017
Aerial Imagery: USDA NAIP 2014





**Dallas to Houston
High-Speed Rail Project**
Project Footprint
Segment 4
Sheet 392 of 536

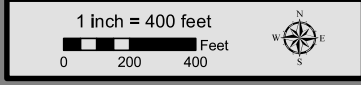
Legend

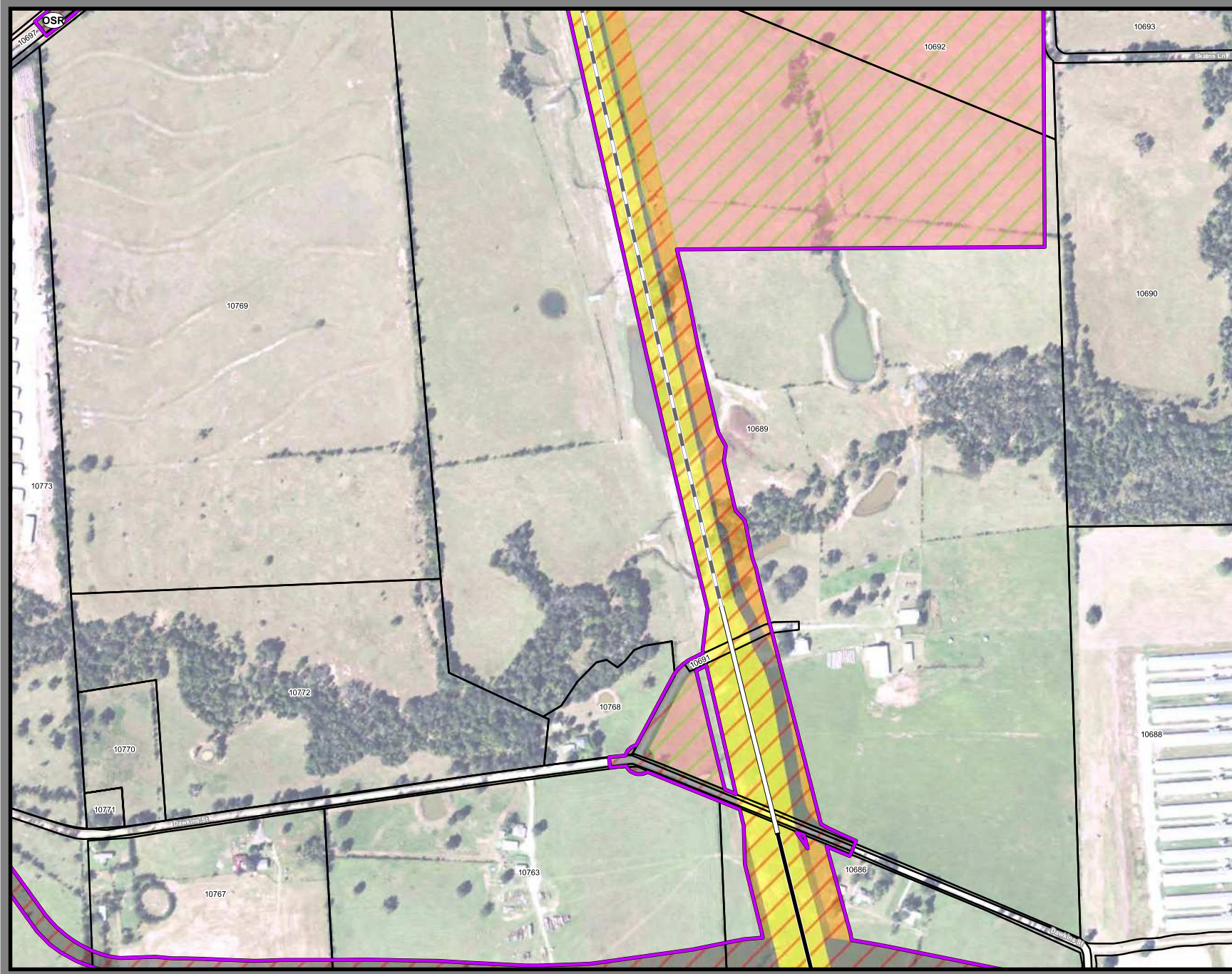
Track Configuration	Limits of Disturbance by Discipline
— Viaduct	Yellow Rail
— Embankment	Grey Highway
— Cut	Purple Train Maintenance Facility
Limits of Disturbance by Segment	Brown Maintenance of Way Facility
Green Segment 1	Cyan Systems*
Purple Segment 2A	Blue Hydro/Drainage
Yellow Segment 2B	Green Station
Cyan Segment 3A	Pink Structures
Orange Segment 3B	Light Pink Temporary Construction
Blue Segment 3C	
Purple Segment 4	
Green Segment 5	
Limits of Disturbance by Impact Type	
Red Diagonal Lines Permanent	
Green Diagonal Lines Temporary	
Black Line Railroad	
Black Line Property Boundary	
Grey Line County Boundary	

Property ID - This is a unique identifier that corresponds with the Property Identification number.

*Systems data includes associated systems and facilities for the HSR, such as ATP, communication systems, SP, SSP and TPSS.

Data Sources: Parcel Data - Contract Land Staff - April 26, 2017
Aerial Imagery: USDA NAIP 2014





**Dallas to Houston
High-Speed Rail Project
Project Footprint
Segment 4
Sheet 393 of 536**

Legend

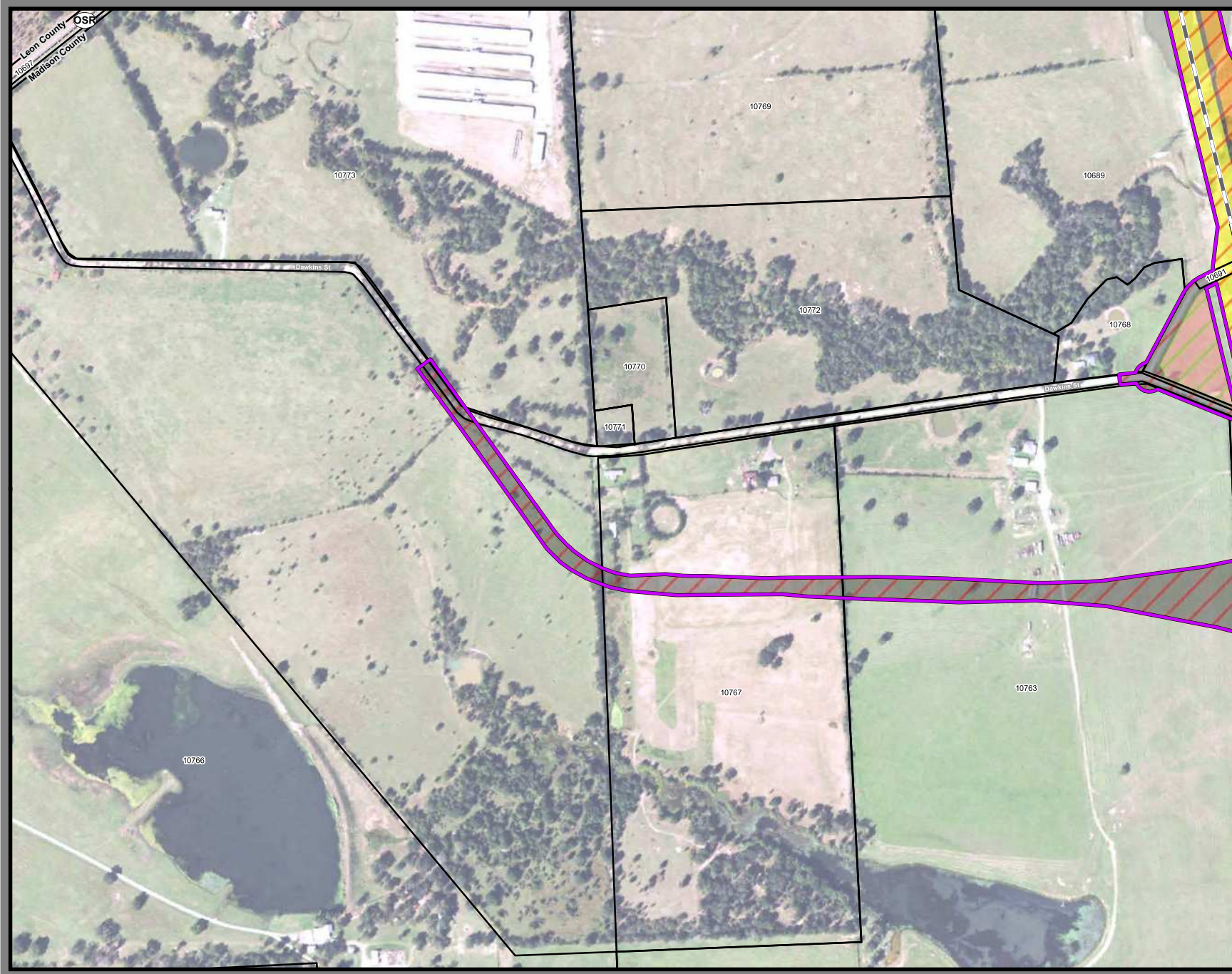
Track Configuration	Limits of Disturbance by Discipline
— Viaduct	Yellow Rail
— Embankment	Grey Highway
— Cut	Purple Train Maintenance Facility
Limits of Disturbance by Segment	Brown Maintenance of Way Facility
Green Segment 1	Light Blue Systems*
Purple Segment 2A	Orange Utilities
Yellow Segment 2B	Blue Hydro/Drainage
Cyan Segment 3A	Green Station
Orange Segment 3B	Pink Structures
Blue Segment 3C	Light Pink Temporary Construction
Purple Segment 4	
Green Segment 5	
Limits of Disturbance by Impact Type	
Red Hatched Permanent	
Green Hatched Temporary	
Black Railroad	
Black Property Boundary	
Grey County Boundary	

Property ID -This is a unique identifier that corresponds with the Property Identification number.

*Systems data includes associated systems and facilities for the HSR, such as ATP, communication systems, SP, SSP and TPSS.

Data Sources: Parcel Data - Contract Land Staff - April 26, 2017
Aerial Imagery: USDA NAIP 2014





**Dallas to Houston
High-Speed Rail Project**
Project Footprint
Segment 4
Sheet 394 of 536

Legend

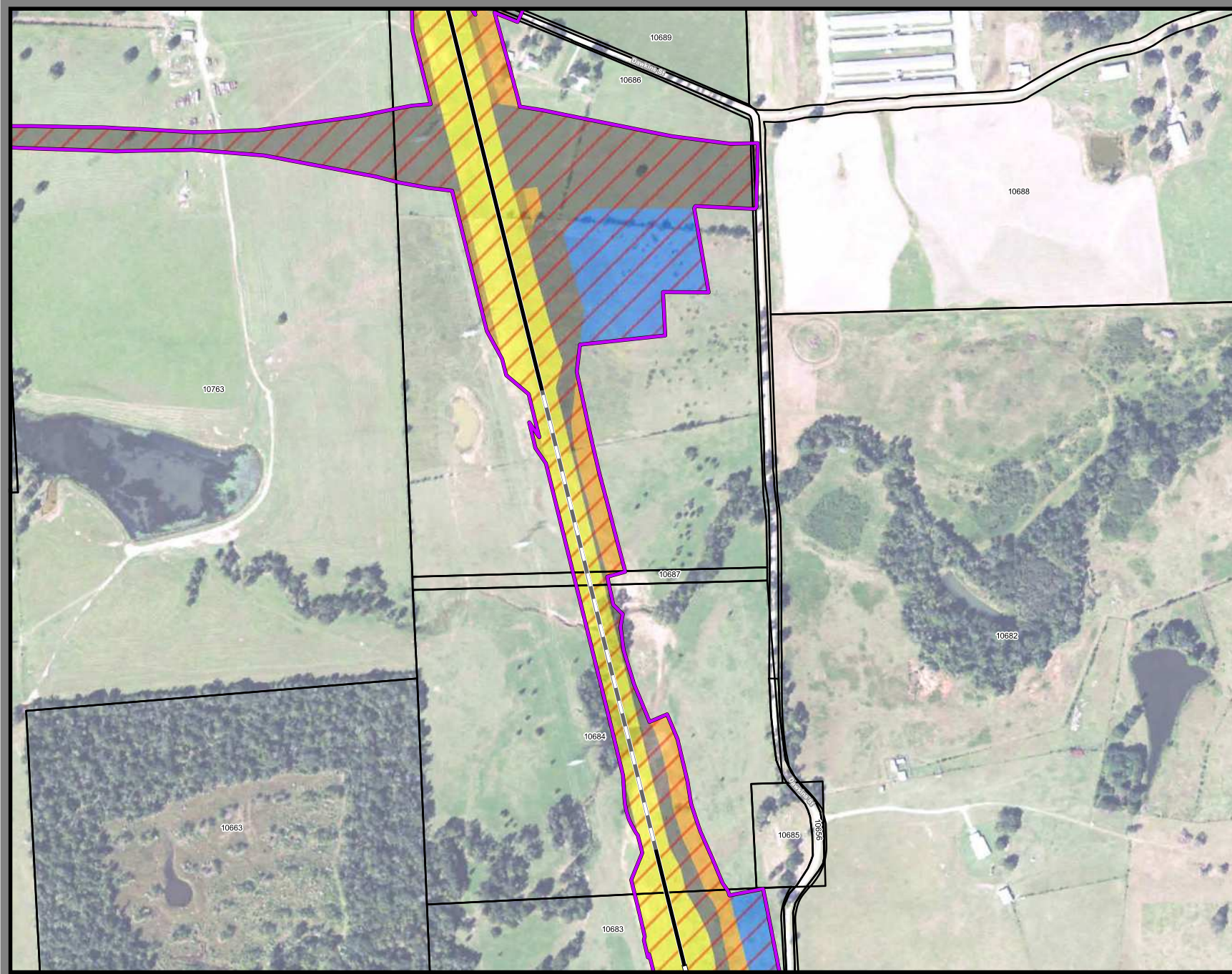
Track Configuration	Limits of Disturbance by Discipline
— Viaduct	Yellow Rail
— Embankment	Grey Highway
— Cut	Pink Train Maintenance Facility
Limits of Disturbance by Segment	Brown Maintenance of Way Facility
Green Segment 1	Light Blue Systems*
Purple Segment 2A	Orange Utilities
Yellow Segment 2B	Blue Hydro/Drainage
Cyan Segment 3A	Green Station
Orange Segment 3B	Pink Structures
Blue Segment 3C	Light Pink Temporary Construction
Purple Segment 4	
Green Segment 5	
Limits of Disturbance by Impact Type	
Red Hatched Permanent	
Green Hatched Temporary	
Black Railroad	
Black Property Boundary	
Grey County Boundary	

Property ID -This is a unique identifier that corresponds with the Property Identification number.

*Systems data includes associated systems and facilities for the HSR, such as ATP, communication systems, SP, SSP and TPSS.

Data Sources: Parcel Data - Contract Land Staff - April 26, 2017
Aerial Imagery: USDA NAIP 2014





**Dallas to Houston
High-Speed Rail Project
Project Footprint
Segment 4
Sheet 395 of 536**

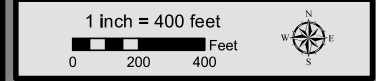
Legend

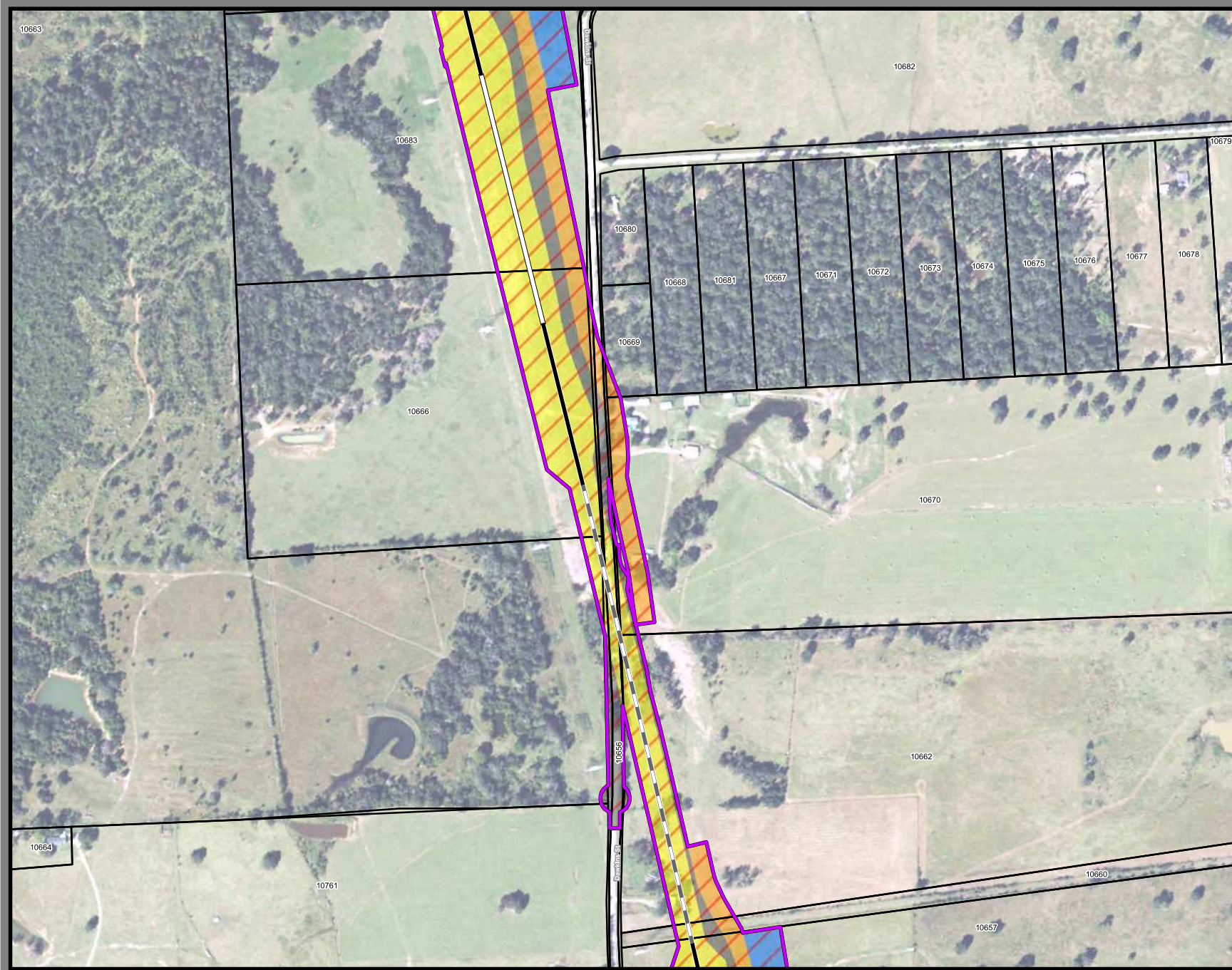
Track Configuration	Limits of Disturbance by Discipline
— Viaduct	Yellow Rail
— Embankment	Grey Highway
— Cut	Purple Train Maintenance Facility
Limits of Disturbance by Segment	Brown Maintenance of Way Facility
Green Segment 1	Cyan Systems*
Purple Segment 2A	Orange Utilities
Yellow Segment 2B	Blue Hydro/Drainage
Cyan Segment 3A	Green Station
Orange Segment 3B	Pink Structures
Blue Segment 3C	Light Pink Temporary Construction
Purple Segment 4	
Green Segment 5	
Limits of Disturbance by Impact Type	
Red diagonal lines Permanent	
Green diagonal lines Temporary	
Black line with cross-ticks Railroad	
Black line Property Boundary	
Grey line County Boundary	

Property ID - This is a unique identifier that corresponds with the Property Identification number.

*Systems data includes associated systems and facilities for the HSR, such as ATP, communication systems, SP, SSP and TPSS.

Data Sources: Parcel Data - Contract Land Staff - April 26, 2017
Aerial Imagery: USDA NAIP 2014





**Dallas to Houston
High-Speed Rail Project
Project Footprint
Segment 4
Sheet 396 of 536**

Legend

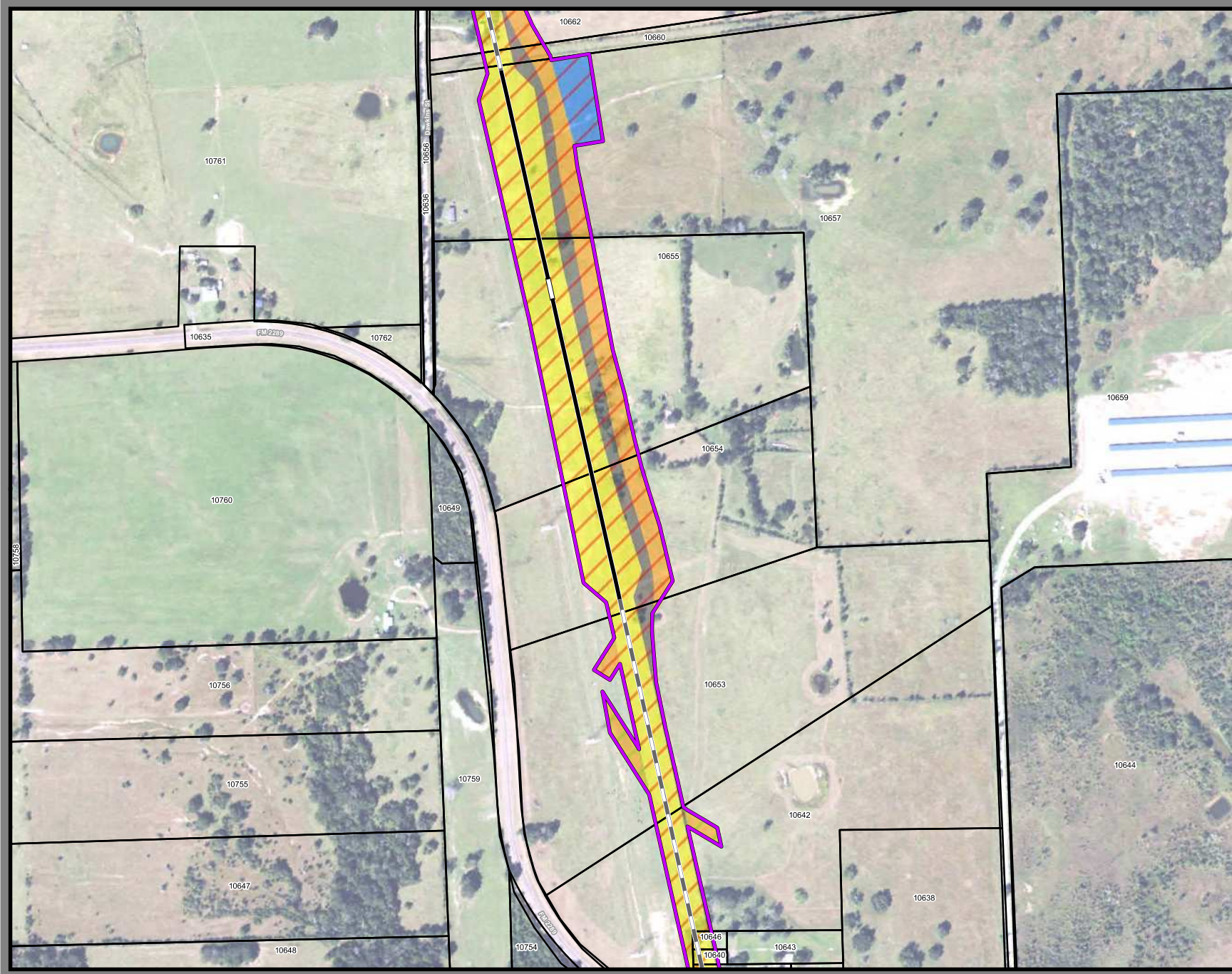
Track Configuration	Limits of Disturbance by Discipline
— Viaduct	Yellow Rail
— Embankment	Grey Highway
— Cut	Purple Train Maintenance Facility
Limits of Disturbance by Segment	Brown Maintenance of Way Facility
Green Segment 1	Cyan Systems*
Purple Segment 2A	Orange Utilities
Yellow Segment 2B	Blue Hydro/Drainage
Cyan Segment 3A	Green Station
Orange Segment 3B	Pink Structures
Blue Segment 3C	Light Pink Temporary Construction
Purple Segment 4	
Green Segment 5	
Limits of Disturbance by Impact Type	
Red/White Diagonal Permanent	
Green/White Diagonal Temporary	
Black Railroad	
Black Property Boundary	
Grey County Boundary	

Property ID -This is a unique identifier that corresponds with the Property Identification number.

*Systems data includes associated systems and facilities for the HSR, such as ATP, communication systems, SP, SSP and TPSS.

Data Sources: Parcel Data - Contract Land Staff - April 26, 2017
Aerial Imagery: USDA NAIP 2014





**Dallas to Houston
High-Speed Rail Project
Project Footprint
Segment 4
Sheet 397 of 536**

Legend

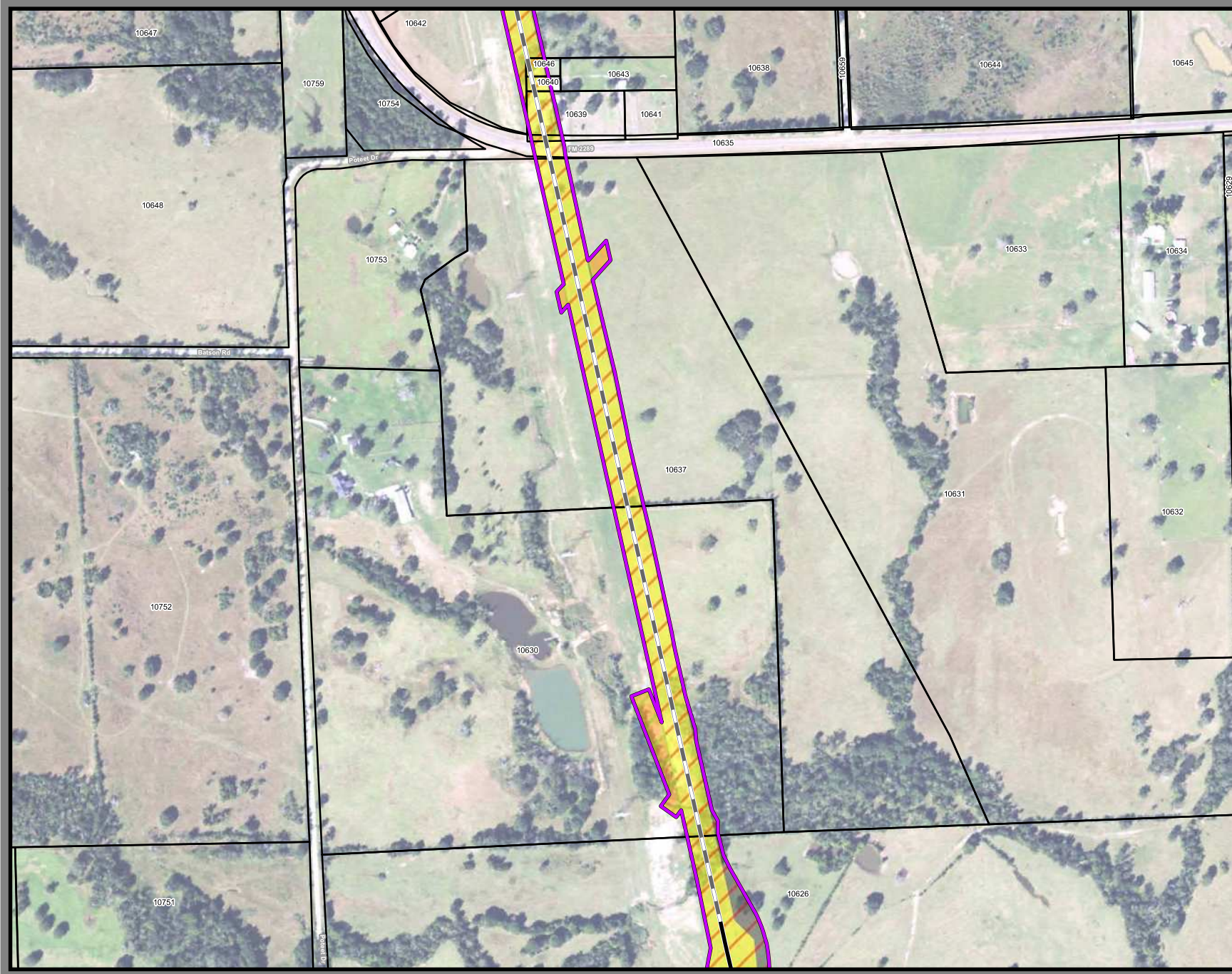
Track Configuration	Limits of Disturbance by Discipline
— Viaduct	Yellow Rail
— Embankment	Grey Highway
— Cut	Pink Train Maintenance Facility
Limits of Disturbance by Segment	Brown Maintenance of Way Facility
Green Segment 1	Light Blue Systems*
Purple Segment 2A	Orange Utilities
Yellow Segment 2B	Blue Hydro/Drainage
Light Blue Segment 3A	Green Station
Orange Segment 3B	Purple Structures
Blue Segment 3C	Pink Temporary Construction
Purple Segment 4	
Green Segment 5	
Limits of Disturbance by Impact Type	
Red hatched Permanent	
Green hatched Temporary	
Black line Railroad	
Black outline Property Boundary	
Grey outline County Boundary	

Property ID -This is a unique identifier that corresponds with the Property Identification number.

*Systems data Includes associated systems and facilities for the HSR, such as ATP, communication systems, SP, SSP and TPSS.

Data Sources: Parcel Data - Contract Land Staff - April 26, 2017
Aerial Imagery: USDA NAIP 2014





**Dallas to Houston
High-Speed Rail Project**
Project Footprint
Segment 4
Sheet 398 of 536

Legend

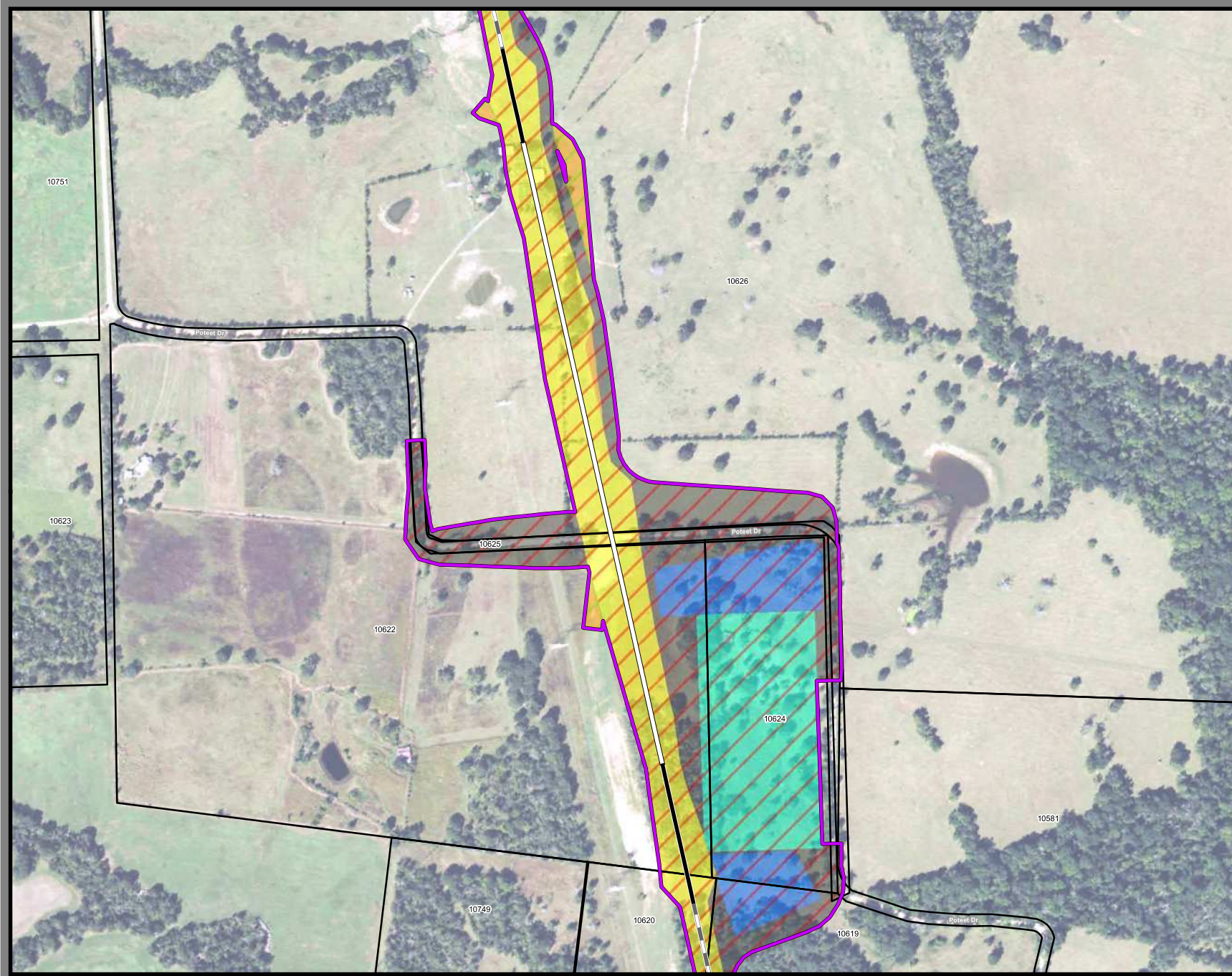
Track Configuration	Limits of Disturbance by Discipline
— Viaduct	Yellow Rail
— Embankment	Grey Highway
— Cut	Purple Train Maintenance Facility
Limits of Disturbance by Segment	Brown Maintenance of Way Facility
Green Segment 1	Cyan Systems*
Purple Segment 2A	Orange Utilities
Yellow Segment 2B	Blue Hydro/Drainage
Cyan Segment 3A	Green Station
Orange Segment 3B	Pink Structures
Blue Segment 3C	Light Blue Temporary Construction
Purple Segment 4	
Green Segment 5	
Limits of Disturbance by Impact Type	
Red/White Permanent	
Green/White Temporary	
Black Railroad	
Black Property Boundary	
Grey County Boundary	

Property ID - This is a unique identifier that corresponds with the Property Identification number.

*Systems data includes associated systems and facilities for the HSR, such as ATP, communication systems, SP, SSP and TPSS.

Data Sources: Parcel Data - Contract Land Staff - April 26, 2017
Aerial Imagery: USDA NAIP 2014





**Dallas to Houston
High-Speed Rail Project**
Project Footprint
Segment 4
Sheet 399 of 536

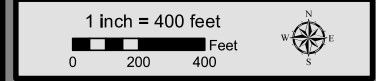
Legend

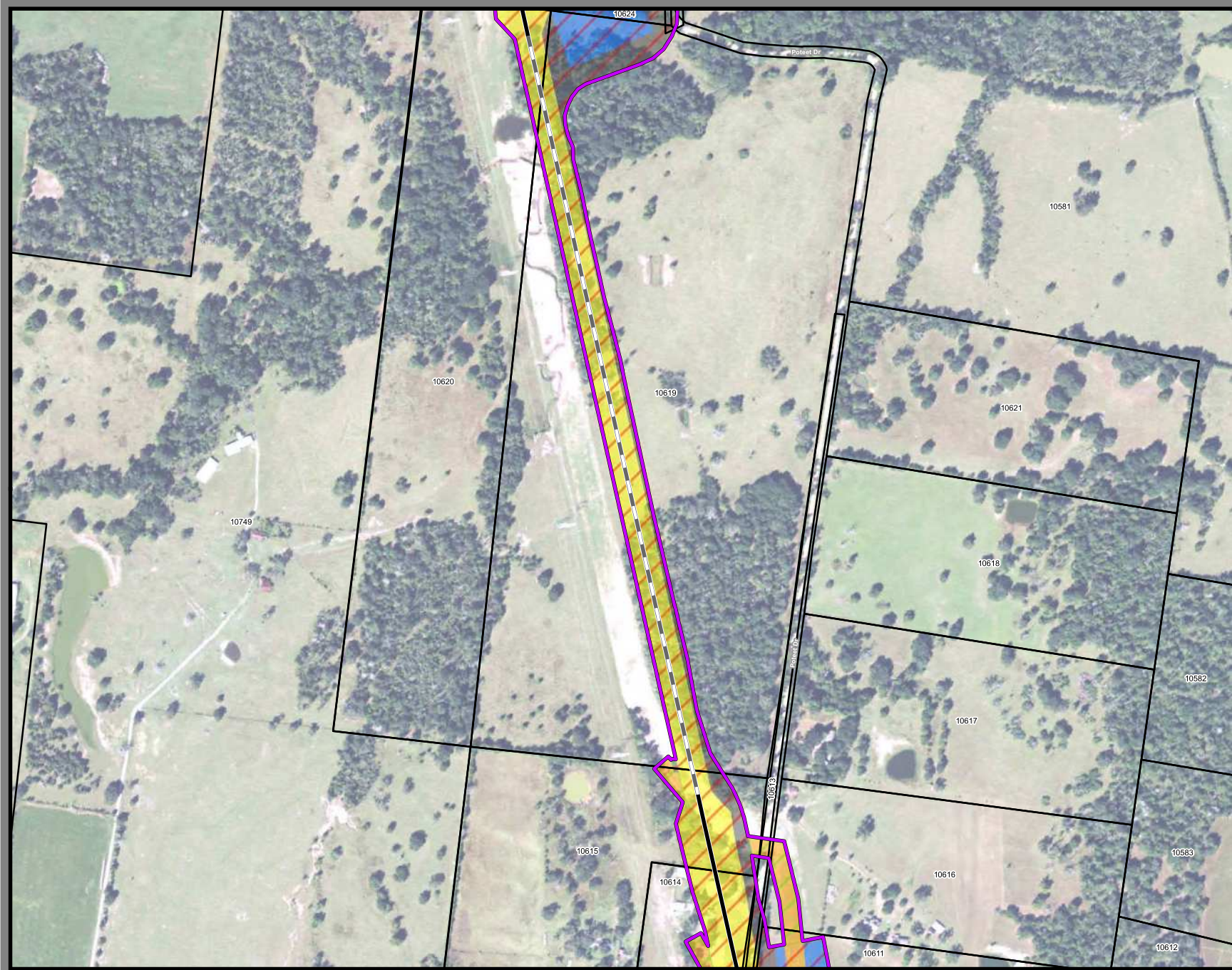
Track Configuration	Limits of Disturbance by Discipline
— Viaduct	Yellow Rail
— Embankment	Grey Highway
— Cut	Pink Train Maintenance Facility
Limits of Disturbance by Segment	Brown Maintenance of Way Facility
Green Segment 1	Cyan Systems*
Pink Segment 2A	Orange Utilities
Yellow Segment 2B	Blue Hydro/Drainage
Cyan Segment 3A	Green Station
Orange Segment 3B	Purple Structures
Blue Segment 3C	Light Pink Temporary Construction
Purple Segment 4	
Light Green Segment 5	
Limits of Disturbance by Impact Type	
Red Diagonal Permanent	
Green Diagonal Temporary	
Black Railroad	
Black Property Boundary	
Grey County Boundary	

Property ID - This is a unique identifier that corresponds with the Property Identification number.

*Systems data includes associated systems and facilities for the HSR, such as ATP, communication systems, SP, SSP and TPSS.

Data Sources: Parcel Data - Contract Land Staff - April 26, 2017
Aerial Imagery: USDA NAIP 2014





**Dallas to Houston
High-Speed Rail Project**
Project Footprint
Segment 4
Sheet 400 of 536

Legend

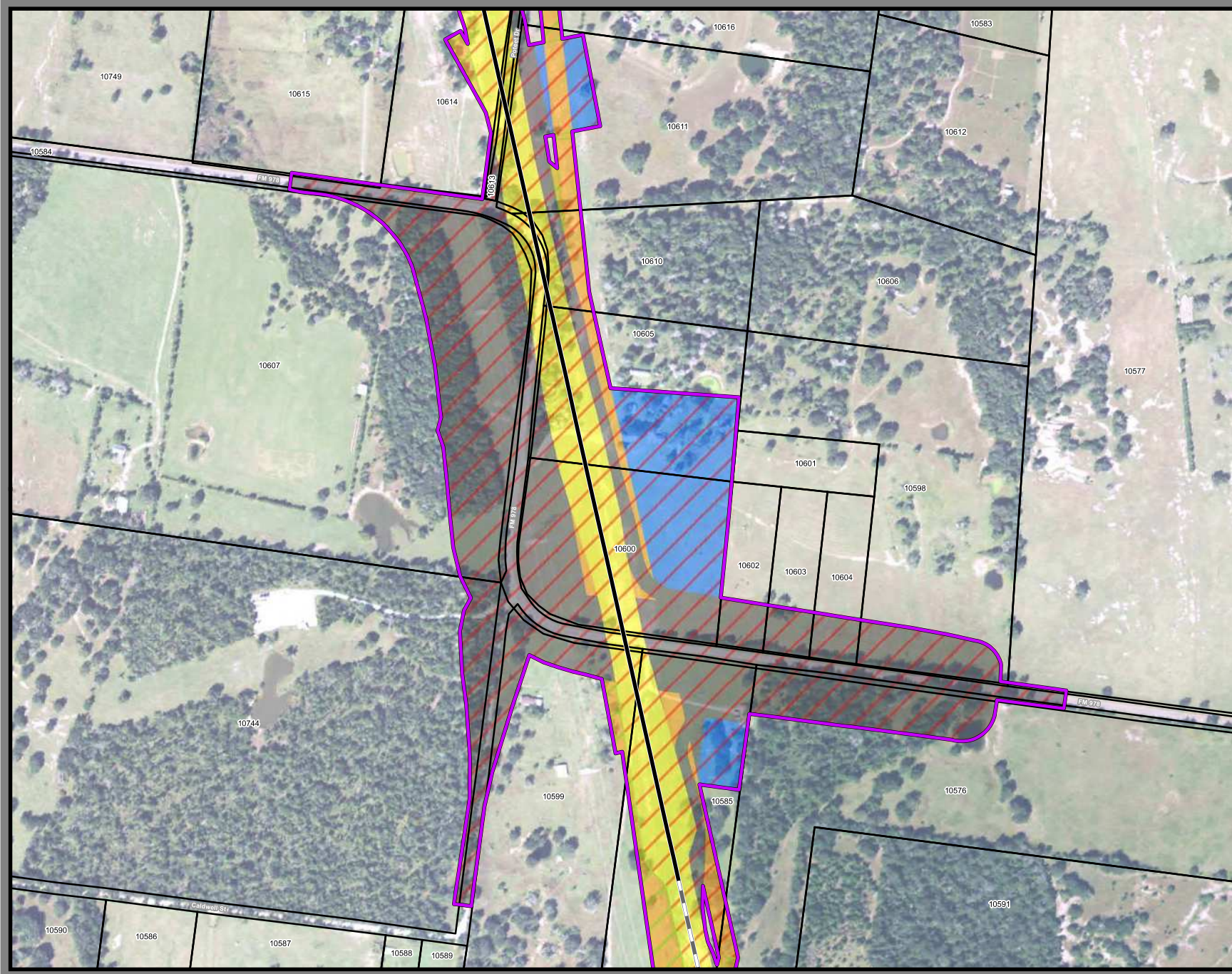
Track Configuration	Limits of Disturbance by Discipline
— Viaduct	Yellow Rail
— Embankment	Grey Highway
— Cut	Purple Train Maintenance Facility
Limits of Disturbance by Segment	Brown Maintenance of Way Facility
Green Segment 1	Cyan Systems*
Purple Segment 2A	Blue Hydro/Drainage
Yellow Segment 2B	Green Station
Cyan Segment 3A	Pink Structures
Orange Segment 3B	Light Blue Temporary Construction
Blue Segment 3C	
Purple Segment 4	
Green Segment 5	
Limits of Disturbance by Impact Type	
Red hatched Permanent	
Green hatched Temporary	
Black Railroad	
Black Property Boundary	
Grey County Boundary	

Property ID - This is a unique identifier that corresponds with the Property Identification number.

*Systems data includes associated systems and facilities for the HSR, such as ATP, communication systems, SP, SSP and TPSS.

Data Sources: Parcel Data - Contract Land Staff - April 26, 2017
Aerial Imagery: USDA NAIP 2014





**Dallas to Houston
High-Speed Rail Project
Project Footprint
Segment 4
Sheet 401 of 536**

Legend

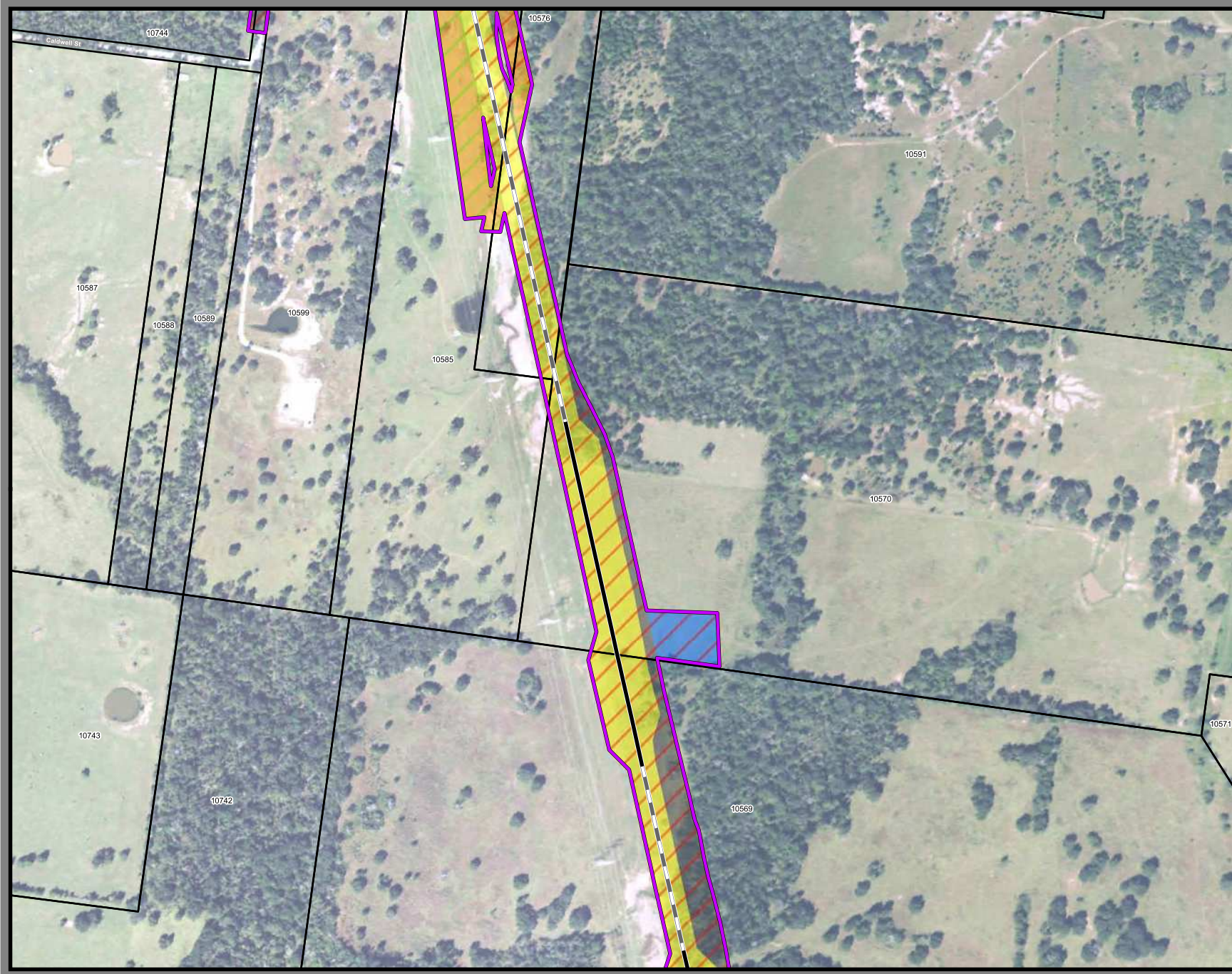
Track Configuration	Limits of Disturbance by Discipline
— Viaduct	Yellow Rail
— Embankment	Grey Highway
— Cut	Purple Train Maintenance Facility
Limits of Disturbance by Segment	Brown Maintenance of Way Facility
Green Segment 1	Cyan Utilities Systems*
Pink Segment 2A	Orange Hydro/Drainage
Yellow Segment 2B	Green Station
Cyan Segment 3A	Pink Structures
Orange Segment 3B	Light Pink Temporary Construction
Green Segment 3C	
Pink Segment 4	
Green Segment 5	
Limits of Disturbance by Impact Type	
Red Diagonal Lines Permanent	
Green Diagonal Lines Temporary	
Black Line Railroad	
Black Outline Property Boundary	
Grey Outline County Boundary	

Property ID -This is a unique identifier that corresponds with the Property Identification number.

*Systems data Includes associated systems and facilities for the HSR, such as ATP, communication systems, SP, SSP and TPSS.

Data Sources: Parcel Data - Contract Land Staff - April 26, 2017
Aerial Imagery: USDA NAIP 2014





**Dallas to Houston
High-Speed Rail Project
Project Footprint
Segment 4
Sheet 402 of 536**

Legend

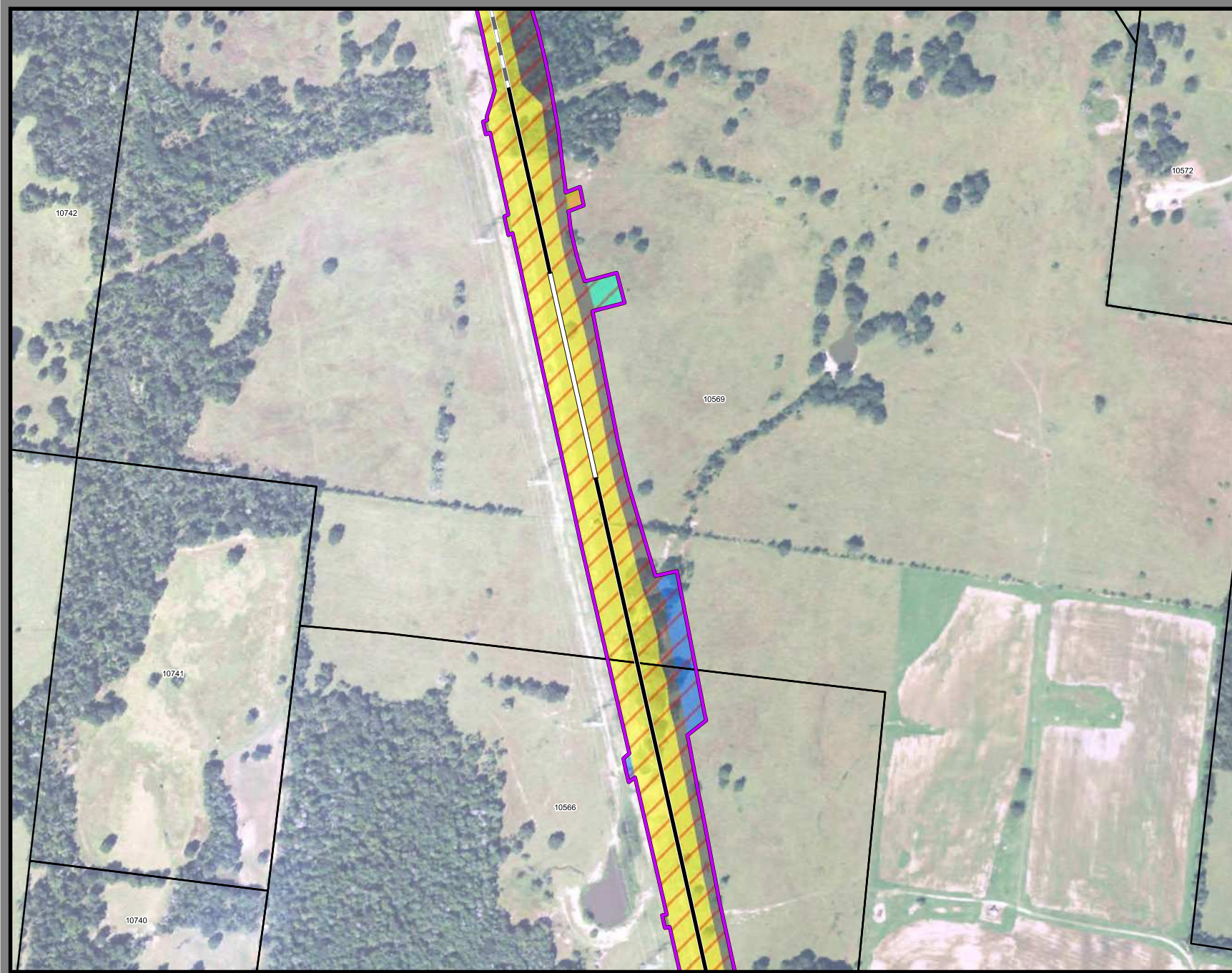
Track Configuration	Limits of Disturbance by Discipline
— Viaduct	Yellow Rail
— Embankment	Grey Highway
— Cut	Purple Train Maintenance Facility
Limits of Disturbance by Segment	Brown Maintenance of Way Facility
Green Segment 1	Cyan Systems*
Purple Segment 2A	Orange Utilities
Yellow Segment 2B	Blue Hydro/Drainage
Cyan Segment 3A	Green Station
Orange Segment 3B	Pink Structures
Blue Segment 3C	Light Pink Temporary Construction
Purple Segment 4	
Green Segment 5	
Limits of Disturbance by Impact Type	
Red/White Diagonal Permanent	
Green/White Diagonal Temporary	
Black Railroad	
Black Property Boundary	
Dashed Black County Boundary	

Property ID - This is a unique identifier that corresponds with the Property Identification number.

*Systems data includes associated systems and facilities for the HSR, such as ATP, communication systems, SP, SSP and TPSS.

Data Sources: Parcel Data - Contract Land Staff - April 26, 2017
Aerial Imagery: USDA NAIP 2014





**Dallas to Houston
High-Speed Rail Project**
Project Footprint
Segment 4
Sheet 403 of 536

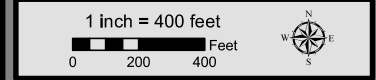
Legend

Track Configuration	Limits of Disturbance by Discipline
— Viaduct	Yellow Rail
— Embankment	Grey Highway
— Cut	Purple Train Maintenance Facility
Limits of Disturbance by Segment	Brown Maintenance of Way Facility
Green Segment 1	Cyan Systems*
Magenta Segment 2A	Orange Utilities
Yellow Segment 2B	Blue Hydro/Drainage
Cyan Segment 3A	Green Station
Orange Segment 3B	Purple Structures
Blue Segment 3C	Pink Temporary Construction
Purple Segment 4	
Light Green Segment 5	
Limits of Disturbance by Impact Type	
Red hatched Permanent	
Green hatched Temporary	
Black line Railroad	
Black outline Property Boundary	
Grey outline County Boundary	

Property ID - This is a unique identifier that corresponds with the Property Identification number.

*Systems data includes associated systems and facilities for the HSR, such as ATP, communication systems, SP, SSP and TPSS.

Data Sources: Parcel Data - Contract Land Staff - April 26, 2017
Aerial Imagery: USDA NAIP 2014





**Dallas to Houston
High-Speed Rail Project**
Project Footprint
Segment 4
Sheet 404 of 536

Legend

Track Configuration	Limits of Disturbance by Discipline
— Viaduct	Yellow Rail
— Embankment	Grey Highway
— Cut	Purple Train Maintenance Facility
Limits of Disturbance by Segment	Brown Maintenance of Way Facility
Green Segment 1	Cyan Systems*
Purple Segment 2A	Orange Utilities
Yellow Segment 2B	Blue Hydro/Drainage
Cyan Segment 3A	Green Station
Orange Segment 3B	Pink Structures
Blue Segment 3C	Light Pink Temporary Construction
Purple Segment 4	
Green Segment 5	
Limits of Disturbance by Impact Type	
Red/White Diagonal Permanent	
Green/White Diagonal Temporary	
Black Railroad	
Black Property Boundary	
Grey County Boundary	

Property ID - This is a unique identifier that corresponds with the Property Identification number.

*Systems data includes associated systems and facilities for the HSR, such as ATP, communication systems, SP, SSP and TPSS.

Data Sources: Parcel Data - Contract Land Staff - April 26, 2017
Aerial Imagery: USDA NAIP 2014





**Dallas to Houston
High-Speed Rail Project
Project Footprint
Segment 4
Sheet 405 of 536**

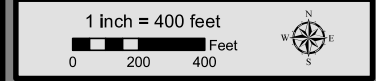
Legend

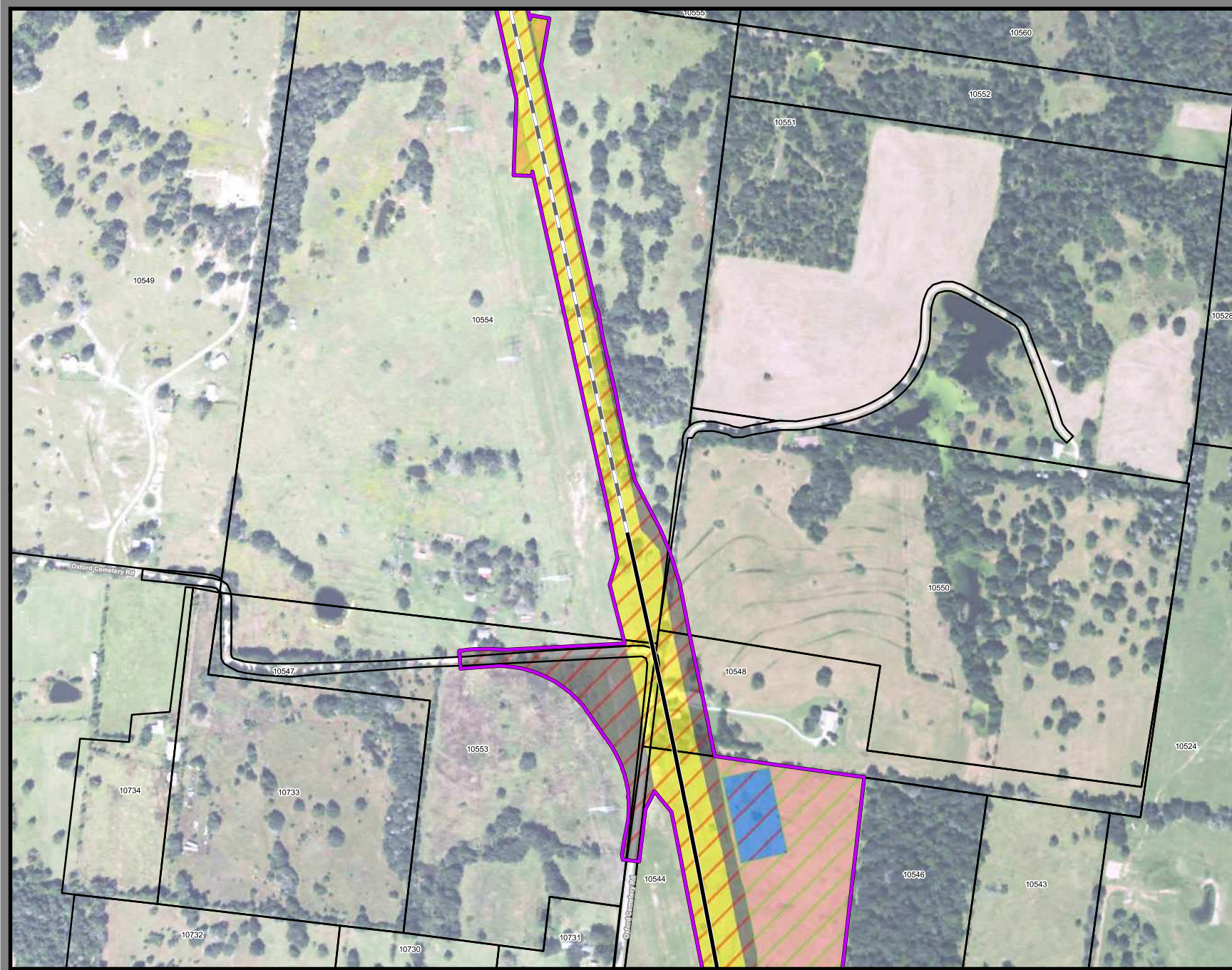
Track Configuration	Limits of Disturbance by Discipline
— Viaduct	Yellow Rail
— Embankment	Grey Highway
— Cut	Purple Train Maintenance Facility
Limits of Disturbance by Segment	Brown Maintenance of Way Facility
Green Segment 1	Light Blue Systems*
Purple Segment 2A	Orange Utilities
Yellow Segment 2B	Blue Hydro/Drainage
Light Blue Segment 3A	Green Station
Orange Segment 3B	Pink Structures
Blue Segment 3C	Light Pink Temporary Construction
Purple Segment 4	
Green Segment 5	
Limits of Disturbance by Impact Type	
Red hatched Permanent	
Green hatched Temporary	
Black line Railroad	
Black outline Property Boundary	
Grey outline County Boundary	

Property ID - This is a unique identifier that corresponds with the Property Identification number.

*Systems data includes associated systems and facilities for the HSR, such as ATP, communication systems, SP, SSP and TPSS.

Data Sources: Parcel Data - Contract Land Staff - April 26, 2017
Aerial Imagery: USDA NAIP 2014





**Dallas to Houston
High-Speed Rail Project
Project Footprint
Segment 4
Sheet 406 of 536**

Legend

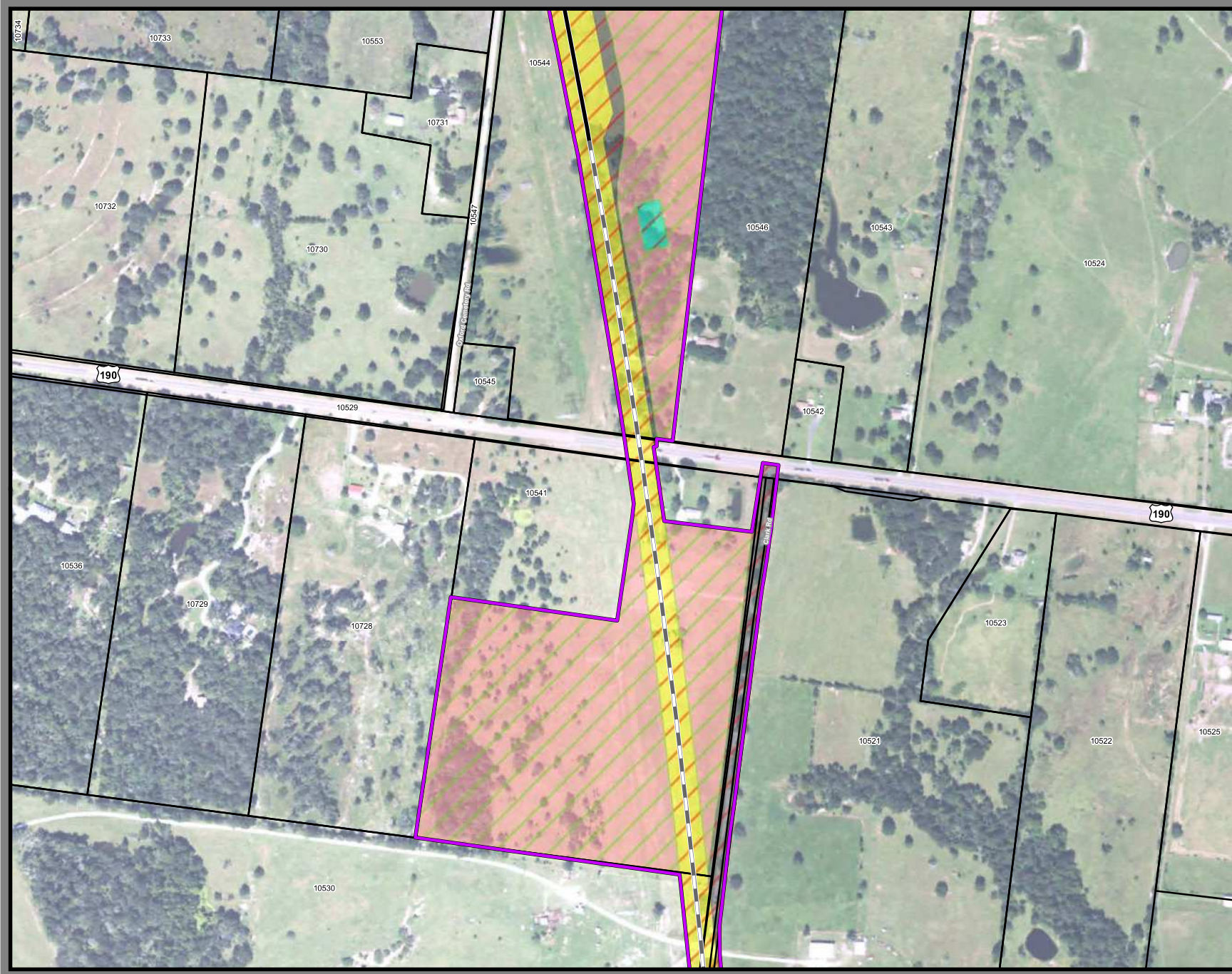
Track Configuration	Limits of Disturbance by Discipline
— Viaduct	Yellow Rail
— Embankment	Grey Highway
— Cut	Purple Train Maintenance Facility
Limits of Disturbance by Segment	Brown Maintenance of Way Facility
Green Segment 1	Light Blue Systems*
Purple Segment 2A	Orange Utilities
Yellow Segment 2B	Blue Hydro/Drainage
Light Blue Segment 3A	Green Station
Orange Segment 3B	Pink Structures
Blue Segment 3C	Light Pink Temporary Construction
Purple Segment 4	
Light Green Segment 5	
Limits of Disturbance by Impact Type	
Red Diagonal Lines Permanent	
Green Diagonal Lines Temporary	
Black Line Railroad	
Black Outline Property Boundary	
Dashed Line County Boundary	

Property ID - This is a unique identifier that corresponds with the Property Identification number.

*Systems data includes associated systems and facilities for the HSR, such as ATP, communication systems, SP, SSP and TPSS.

Data Sources: Parcel Data - Contract Land Staff - April 26, 2017
Aerial Imagery: USDA NAIP 2014





**Dallas to Houston
High-Speed Rail Project
Project Footprint
Segment 4
Sheet 407 of 536**

Legend

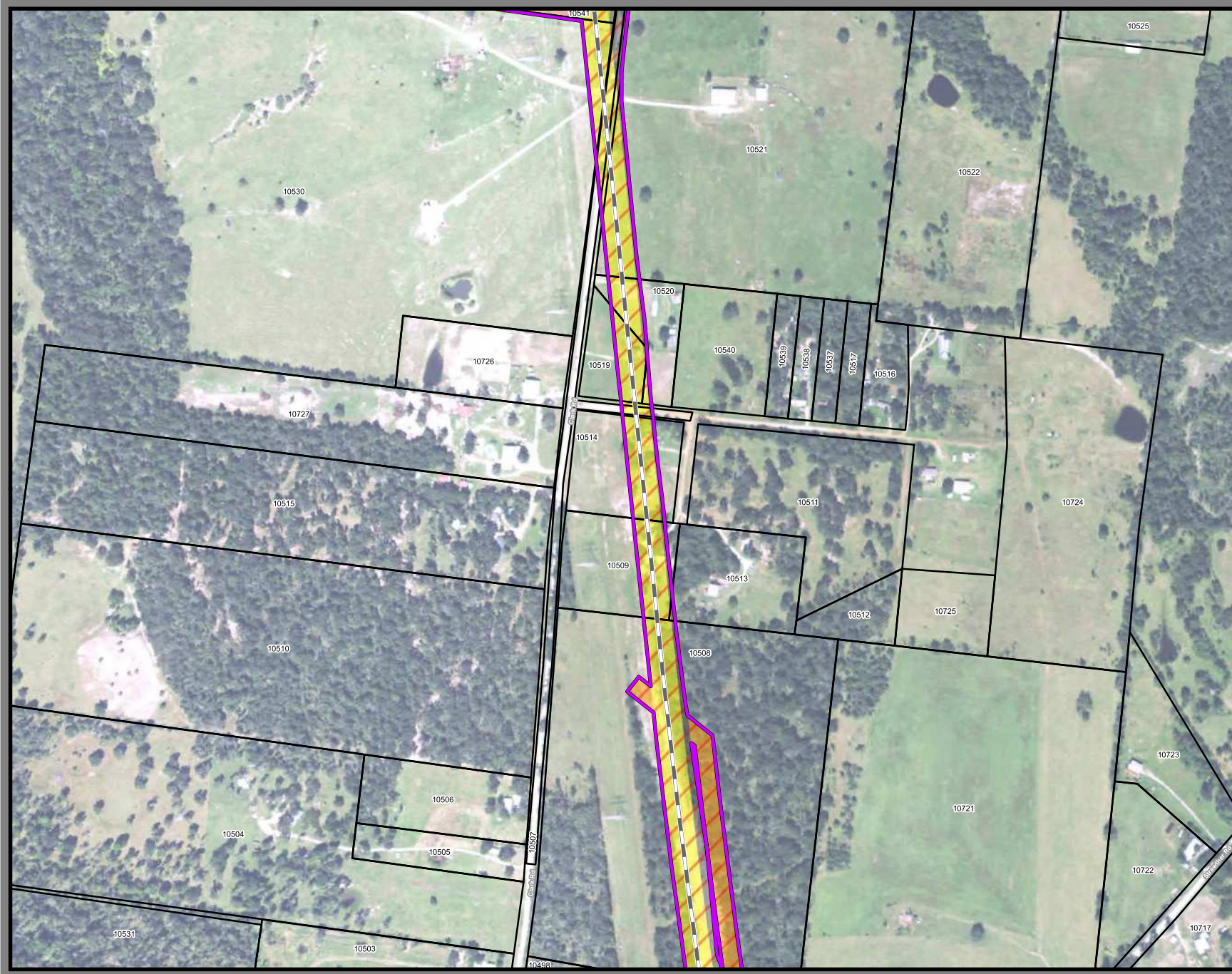
Track Configuration	Limits of Disturbance by Discipline
— Viaduct	Yellow Rail
— Embankment	Grey Highway
— Cut	Pink Train Maintenance Facility
Limits of Disturbance by Segment	Brown Maintenance of Way Facility
Green Segment 1	Light Blue Systems*
Purple Segment 2A	Blue Hydro/Drainage
Yellow Segment 2B	Green Station
Orange Segment 3A	Pink Structures
Blue Segment 3B	Light Orange Temporary Construction
Dark Blue Segment 3C	
Purple Segment 4	
Green Segment 5	
Limits of Disturbance by Impact Type	
Red hatched Permanent	
Green hatched Temporary	
Black line Railroad	
Black outline Property Boundary	
Grey outline County Boundary	

Property ID - This is a unique identifier that corresponds with the Property Identification number.

*Systems data includes associated systems and facilities for the HSR, such as ATP, communication systems, SP, SSP and TPSS.

Data Sources: Parcel Data - Contract Land Staff - April 26, 2017
Aerial Imagery: USDA NAIP 2014





**Dallas to Houston
High-Speed Rail Project**
Project Footprint
Segment 4
Sheet 408 of 536

Legend

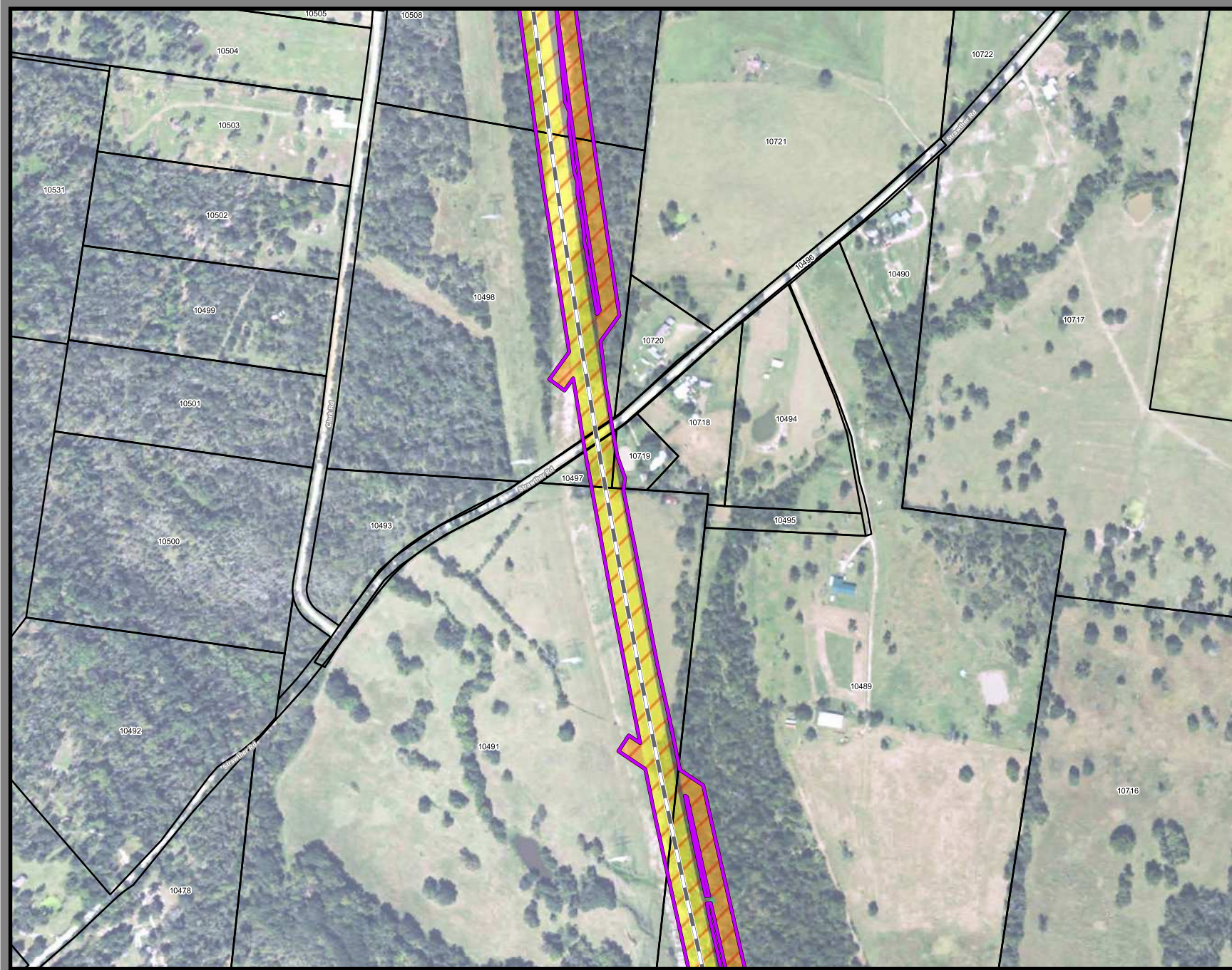
Track Configuration	Limits of Disturbance by Discipline
— Viaduct	Yellow Rail
— Embankment	Grey Highway
— Cut	Pink Train Maintenance Facility
Limits of Disturbance by Segment	Brown Maintenance of Way Facility
Green Segment 1	Light Blue Utilities
Pink Segment 2A	Dark Blue Hydro/Drainage
Yellow Segment 2B	Light Green Station
Light Blue Segment 3A	Purple Structures
Orange Segment 3B	Light Pink Temporary Construction
Blue Segment 3C	
Purple Segment 4	
Green Segment 5	
Limits of Disturbance by Impact Type	
Red/White Hatched Permanent	
Green/White Hatched Temporary	
Black Line Railroad	
Black Outline Property Boundary	
Grey Outline County Boundary	

Property ID -This is a unique identifier that corresponds with the Property Identification number.

*Systems data includes associated systems and facilities for the HSR, such as ATP, communication systems, SP, SSP and TPSS.

Data Sources: Parcel Data - Contract Land Staff - April 26, 2017
Aerial Imagery: USDA NAIP 2014





**Dallas to Houston
High-Speed Rail Project
Project Footprint
Segment 4
Sheet 409 of 536**

Legend

Track Configuration	Limits of Disturbance by Discipline
— Viaduct	Yellow Rail
— Embankment	Grey Highway
— Cut	Pink Train Maintenance Facility
Limits of Disturbance by Segment	Brown Maintenance of Way Facility
Green Segment 1	Cyan Systems*
Pink Segment 2A	Orange Utilities
Yellow Segment 2B	Blue Hydro/Drainage
Cyan Segment 3A	Green Station
Orange Segment 3B	Purple Structures
Blue Segment 3C	Pink Temporary Construction
Purple Segment 4	
Light Green Segment 5	
Limits of Disturbance by Impact Type	
Red hatched Permanent	
Green hatched Temporary	
Black line Railroad	
Black outline Property Boundary	
Grey outline County Boundary	

Property ID -This is a unique identifier that corresponds with the Property Identification number.

*Systems data Includes associated systems and facilities for the HSR, such as ATP, communication systems, SP, SSP and TPSS.

Data Sources: Parcel Data - Contract Land Staff - April 26, 2017
Aerial Imagery: USDA NAIP 2014





**Dallas to Houston
High-Speed Rail Project**
Project Rail
Segment 4
Sheet 410 of 536

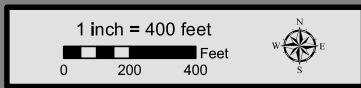
Legend

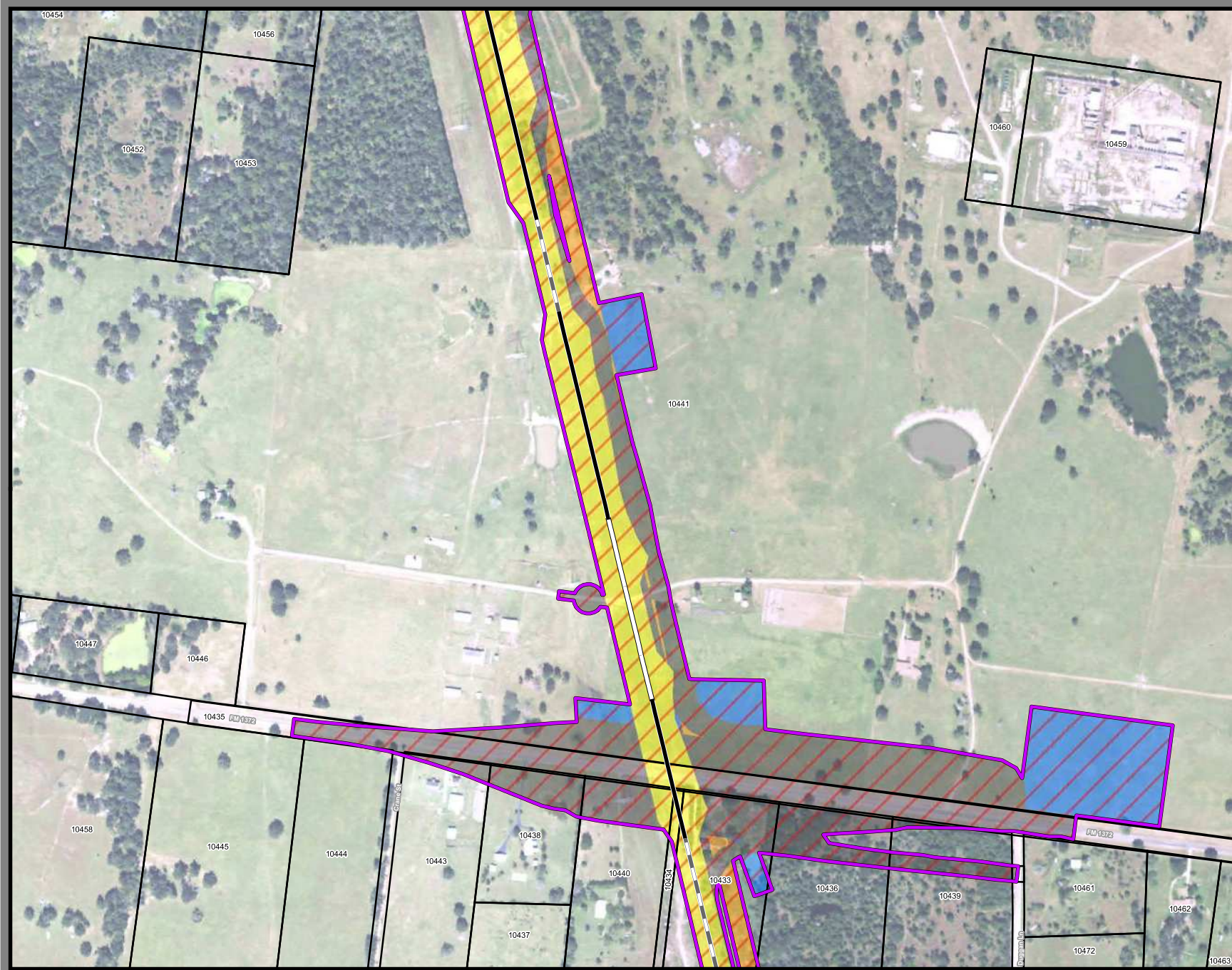
Track Configuration	Limits of Disturbance by Discipline
— Viaduct	Yellow Rail
— Embankment	Grey Highway
— Cut	Pink Train Maintenance Facility
Limits of Disturbance by Segment	Brown Maintenance of Way Facility
Green Segment 1	Cyan Systems*
Pink Segment 2A	Orange Utilities
Yellow Segment 2B	Blue Hydro/Drainage
Cyan Segment 3A	Green Station
Orange Segment 3B	Purple Structures
Blue Segment 3C	Pink Temporary Construction
Purple Segment 4	
Green Segment 5	
Limits of Disturbance by Impact Type	
Red/White Diagonal Permanent	
Green/White Diagonal Temporary	
Black Railroad	
Black Property Boundary	
Grey County Boundary	

Property ID - This is a unique identifier that corresponds with the Property Identification number.

*Systems data includes associated systems and facilities for the HSR, such as ATP, communication systems, SP, SSP and TPSS.

Data Sources: Parcel Data - Contract Land Staff - April 26, 2017
Aerial Imagery: USDA NAIP 2014





**Dallas to Houston
High-Speed Rail Project
Project Footprint
Segment 4
Sheet 411 of 536**

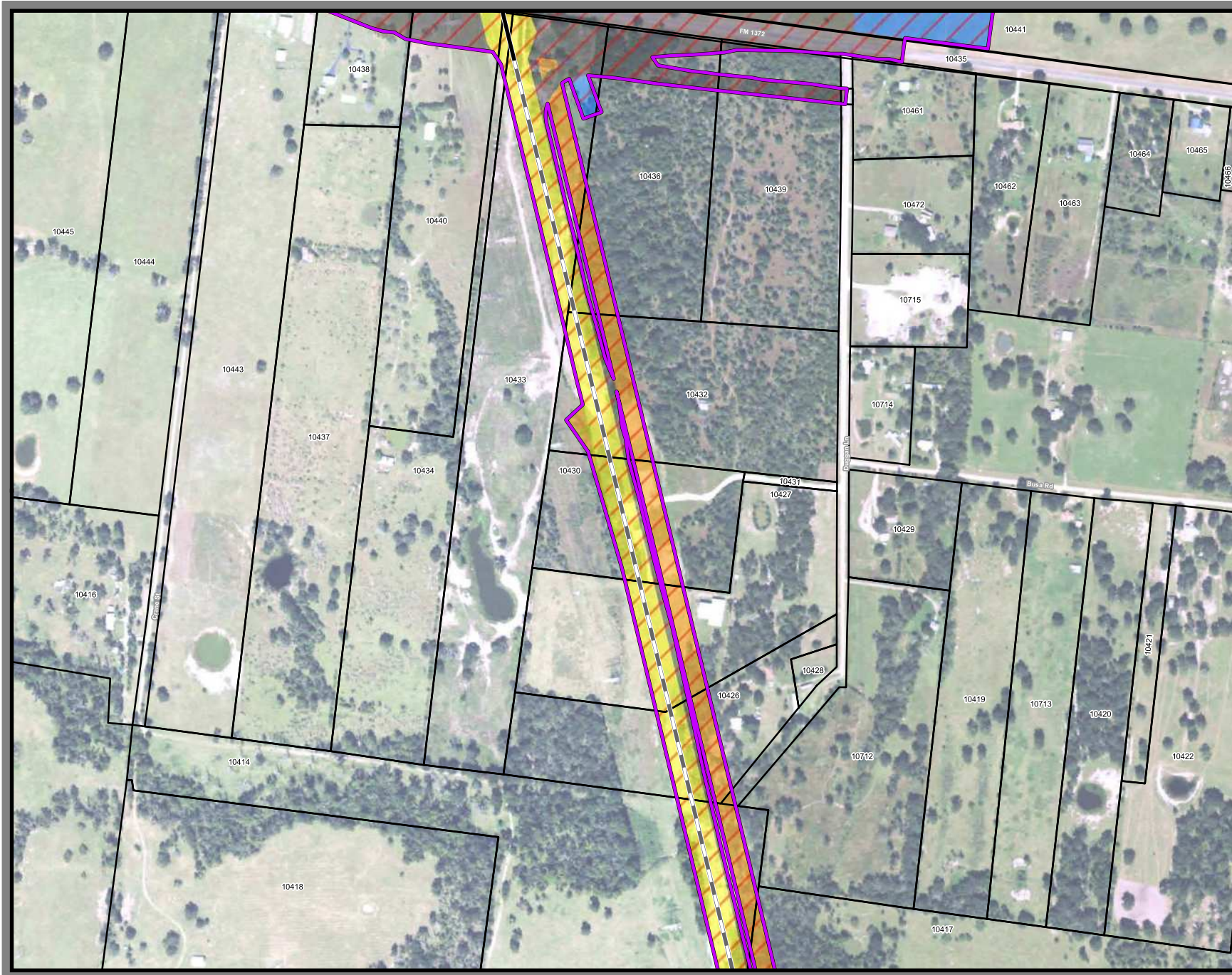
- Legend**
- | | |
|---|--|
| Track Configuration | Limits of Disturbance by Discipline |
| — Viaduct | Yellow Rail |
| — Embankment | Grey Highway |
| — Cut | Purple Train Maintenance Facility |
| Limits of Disturbance by Segment | Brown Maintenance of Way Facility |
| Green Segment 1 | Cyan Systems* |
| Magenta Segment 2A | Orange Utilities |
| Yellow Segment 2B | Blue Hydro/Drainage |
| Cyan Segment 3A | Green Station |
| Orange Segment 3B | Purple Structures |
| Blue Segment 3C | Pink Temporary Construction |
| Purple Segment 4 | |
| Light Green Segment 5 | |
| Limits of Disturbance by Impact Type | |
| Red Diagonal Permanent | |
| Green Diagonal Temporary | |
| Black Railroad | |
| Black Property Boundary | |
| Dashed County Boundary | |

Property ID -This is a unique identifier that corresponds with the Property Identification number.

*Systems data Includes associated systems and facilities for the HSR, such as ATP, communication systems, SP, SSP and TPSS.

Data Sources: Parcel Data - Contract Land Staff - April 26, 2017
Aerial Imagery: USDA NAIP 2014





**Dallas to Houston
High-Speed Rail Project
Project Footprint
Segment 4
Sheet 412 of 536**

Legend

Track Configuration	Limits of Disturbance by Discipline
— Viaduct	Yellow Rail
— Embankment	Grey Highway
— Cut	Purple Train Maintenance Facility
Limits of Disturbance by Segment	Brown Maintenance of Way Facility
Green Segment 1	Light Blue Systems*
Purple Segment 2A	Orange Utilities
Yellow Segment 2B	Blue Hydro/Drainage
Cyan Segment 3A	Green Station
Orange Segment 3B	Pink Structures
Blue Segment 3C	Light Pink Temporary Construction
Purple Segment 4	
Green Segment 5	
Limits of Disturbance by Impact Type	
Red Diagonal Lines Permanent	
Green Diagonal Lines Temporary	
Black Line Railroad	
Black Line Property Boundary	
Grey Line County Boundary	

Property ID - This is a unique identifier that corresponds with the Property Identification number.

*Systems data includes associated systems and facilities for the HSR, such as ATP, communication systems, SP, SSP and TPSS.

Data Sources: Parcel Data - Contract Land Staff - April 26, 2017
Aerial Imagery: USDA NAIP 2014





**Dallas to Houston
High-Speed Rail Project**
Project Footprint
Segment 4
Sheet 413 of 536

Legend

Track Configuration	Limits of Disturbance by Discipline
— Viaduct	Yellow Rail
— Embankment	Grey Highway
— Cut	Purple Train Maintenance Facility
Limits of Disturbance by Segment	Brown Maintenance of Way Facility
Green Segment 1	Cyan Systems*
Purple Segment 2A	Orange Utilities
Yellow Segment 2B	Blue Hydro/Drainage
Cyan Segment 3A	Green Station
Orange Segment 3B	Pink Structures
Blue Segment 3C	Light Pink Temporary Construction
Purple Segment 4	
Green Segment 5	
Limits of Disturbance by Impact Type	
Red hatched Permanent	
Green hatched Temporary	
Black dashed Railroad	
Black solid Property Boundary	
Grey dashed County Boundary	

Property ID - This is a unique identifier that corresponds with the Property Identification number.

*Systems data includes associated systems and facilities for the HSR, such as ATP, communication systems, SP, SSP and TPSS.

Data Sources: Parcel Data - Contract Land Staff - April 26, 2017
Aerial Imagery: USDA NAIP 2014

