

**Dallas to Houston
High-Speed Rail Project
Land Use
Segment 3A
Sheet 44 of 257**

Legend

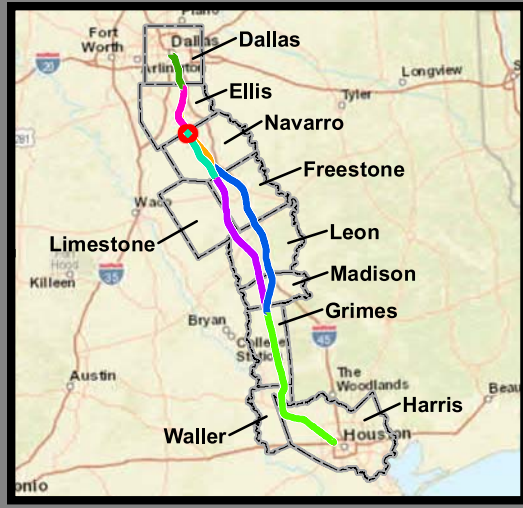
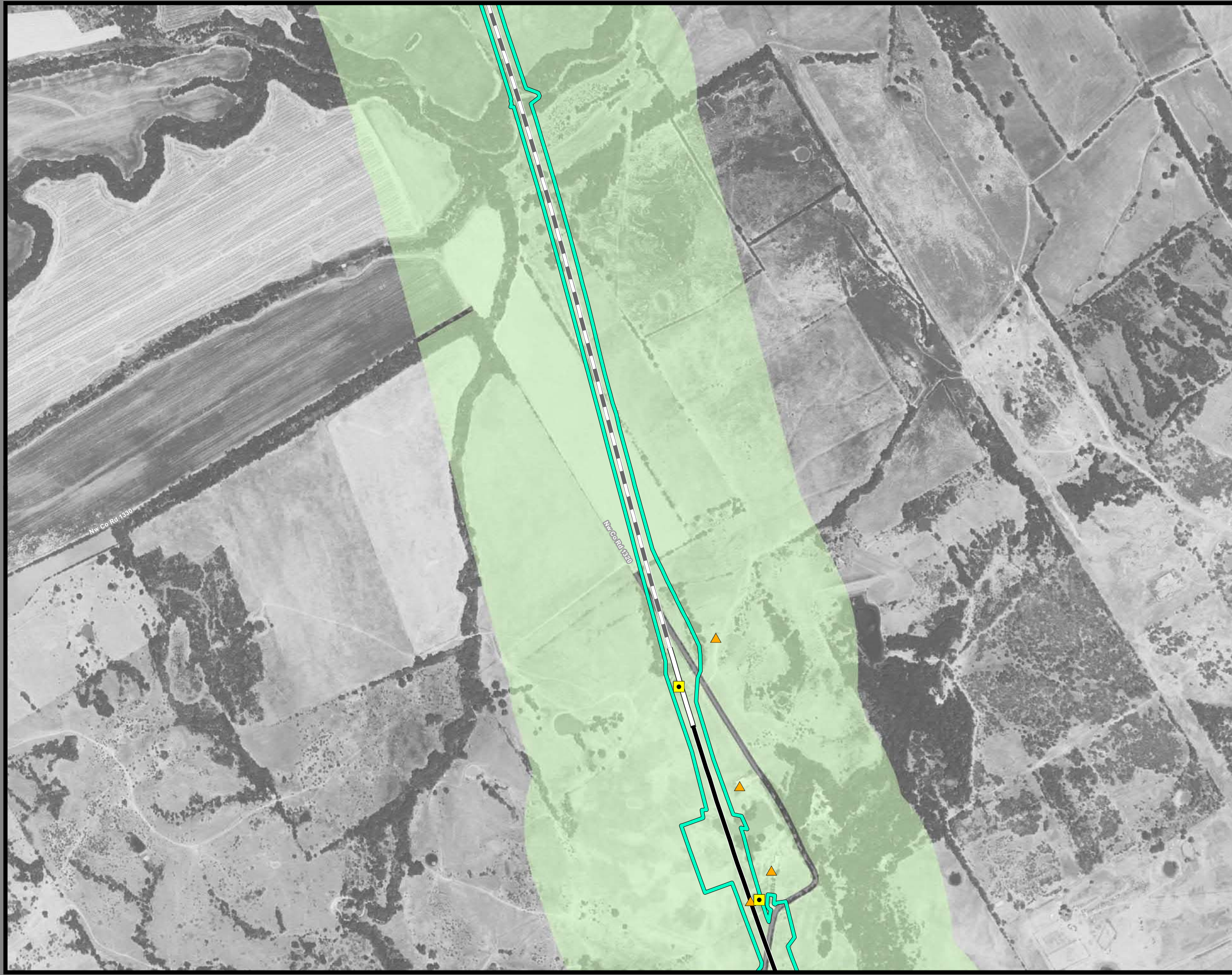
Track Configuration	Jurisdictional Boundaries
— Viaduct	▭ County Boundary
▬ Embankment	▭ City Boundary
▬ Cut	▭ USACE Bardwell Lake
Limits of Disturbance	▭ Fort Boggy SP
▭ Segment 1	Land Use
▭ Segment 2A	▭ Agriculture
▭ Segment 2B	▭ Civic
▭ Segment 3A	▭ Commercial
▭ Segment 3B	▭ Forested Area
▭ Segment 3C	▭ Industrial
▭ Segment 4	▭ Park
▭ Segment 5	▭ Residential
Structures	▭ Rural
◆ Agriculture	▭ Transportation
▲ Barn / Shed	▭ Unclassified
▭ Commercial	▭ Utility
▭ Commercial within LOD	▭ Vacant
▭ Community Facility	▭ Water Feature
▭ Community Facility within LOD	
☀ Cultural Resources	
● Oil / Gas	
▭ Residential	
▭ Residential within LOD	
⊗ Transportation	
○ Unknown Structure	
⊕ Utility	

This Sheet only depicts Segment 3A; Segments 3B & 3C are also located in this same area and can be referenced on Sheets 63 & 82.

*Inaccuracies in the original county appraisal district property data may result in misalignment with aerial imagery.
*Only structures within 200 feet of the LOD were evaluated for analysis purposes. Land use is only displayed within a quarter mile of the LOD.

Data Sources: County/City Boundaries - TxDOT 2013; Land Use - Respective County Appraisal Districts (2011, 2015, 2016), CLS (2017)
Aerial Imagery: USDA NAIP 2014





**Dallas to Houston
High-Speed Rail Project
Land Use
Segment 3A
Sheet 45 of 257**

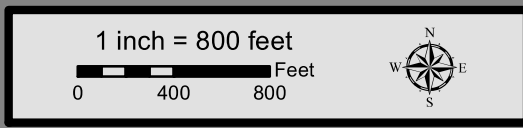
Legend

Track Configuration	Jurisdictional Boundaries
— Viaduct	▭ County Boundary
— Embankment	▭ City Boundary
— Cut	▭ USACE Bardwell Lake
Limits of Disturbance	▭ Fort Boggy SP
▭ Segment 1	Land Use
▭ Segment 2A	▭ Agriculture
▭ Segment 2B	▭ Civic
▭ Segment 3A	▭ Commercial
▭ Segment 3B	▭ Forested Area
▭ Segment 3C	▭ Industrial
▭ Segment 4	▭ Park
▭ Segment 5	▭ Residential
Structures	▭ Rural
◆ Agriculture	▭ Transportation
▲ Barn / Shed	▭ Unclassified
■ Commercial	▭ Utility
■ Commercial within LOD	▭ Vacant
◆ Community Facility	▭ Water Feature
◆ Community Facility within LOD	
☀ Cultural Resources	
● Oil / Gas	
■ Residential	
■ Residential within LOD	
⊗ Transportation	
○ Unknown Structure	
⊕ Utility	

*****This Sheet only depicts Segment 3A; Segments 3B & 3C are also located in this same area and can be referenced on Sheets 64 & 83.*****

**Inaccuracies in the original county appraisal district property data may result in misalignment with aerial imagery.
Only structures within 200 feet of the LOD were evaluated for analysis purposes. Land use is only displayed within a quarter mile of the LOD.

Data Sources: County/City Boundaries - TxDOT 2013; Land Use - Respective County Appraisal Districts (2011, 2015, 2016), CLS (2017)
Aerial Imagery: USDA NAIP 2014





**Dallas to Houston
High-Speed Rail Project
Land Use
Segment 3A
Sheet 46 of 257**

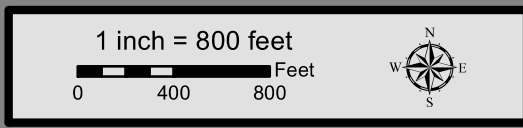
Legend

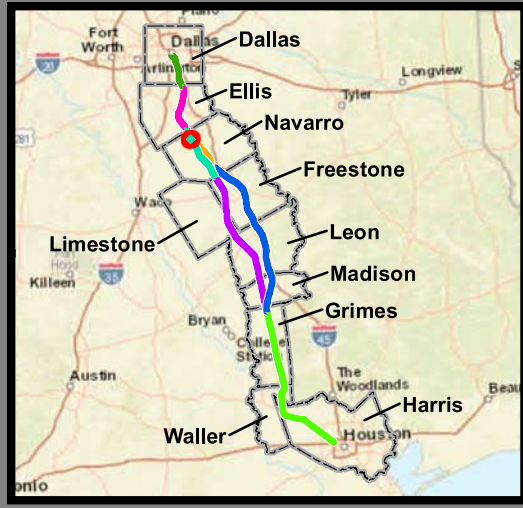
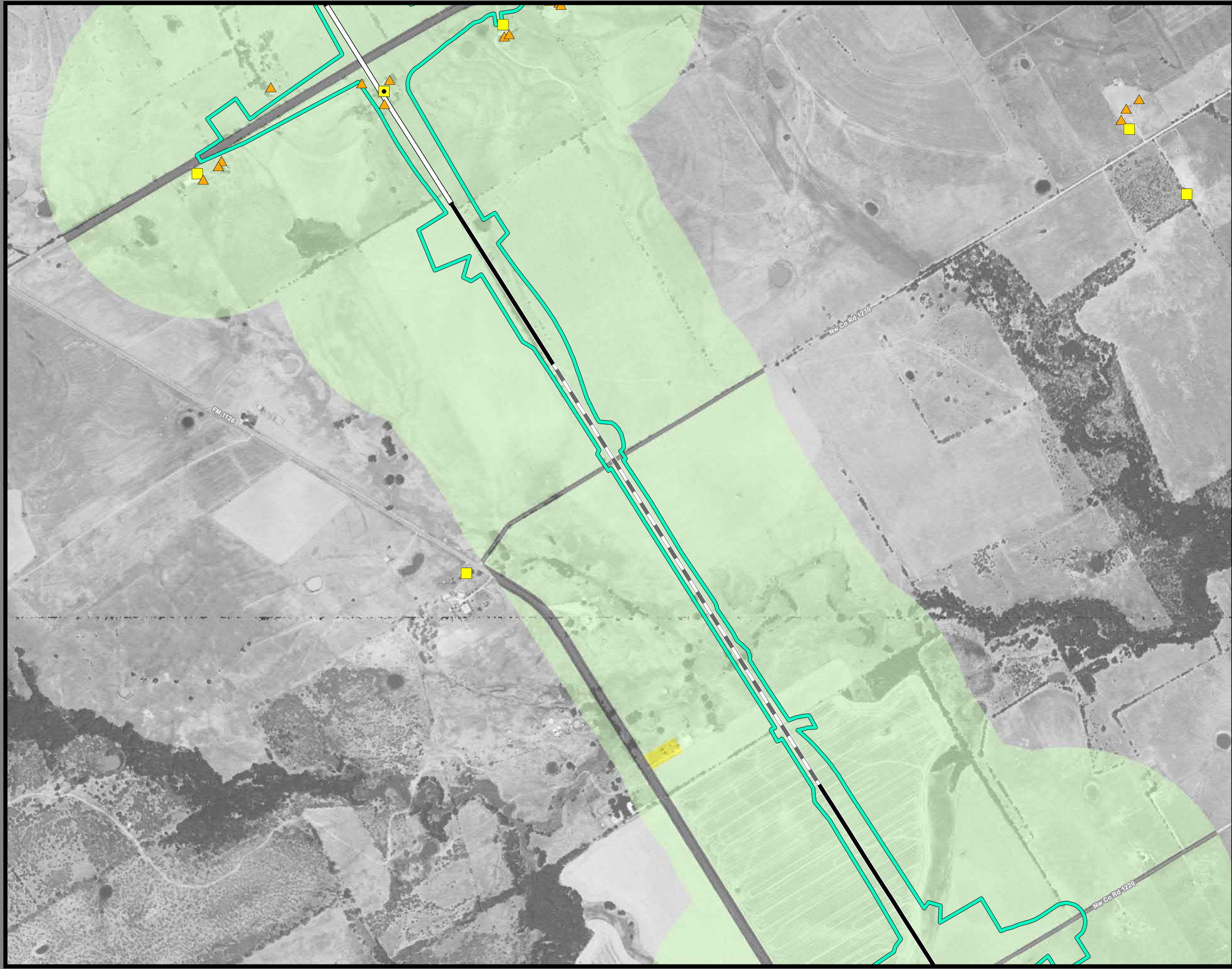
<p>Track Configuration</p> <ul style="list-style-type: none"> — Viaduct — Embankment — Cut <p>Limits of Disturbance</p> <ul style="list-style-type: none"> Segment 1 Segment 2A Segment 2B Segment 3A Segment 3B Segment 3C Segment 4 Segment 5 <p>Structures</p> <ul style="list-style-type: none"> Agriculture Barn / Shed Commercial Commercial within LOD Community Facility Community Facility within LOD Cultural Resources Oil / Gas Residential Residential within LOD Transportation Unknown Structure Utility 	<p>Jurisdictional Boundaries</p> <ul style="list-style-type: none"> County Boundary City Boundary USACE Bardwell Lake Fort Boggy SP <p>Land Use</p> <ul style="list-style-type: none"> Agriculture Civic Commercial Forested Area Industrial Park Residential Rural Transportation Unclassified Utility Vacant Water Feature
--	---

This Sheet only depicts Segment 3A; Segments 3B & 3C are also located in this same area and can be referenced on Sheets 65 & 84.

*Inaccuracies in the original county appraisal district property data may result in misalignment with aerial imagery.
*Only structures within 200 feet of the LOD were evaluated for analysis purposes. Land use is only displayed within a quarter mile of the LOD.

Data Sources: County/City Boundaries - TxDOT 2013; Land Use - Respective County Appraisal Districts (2011, 2015, 2016), CLS (2017)
Aerial Imagery: USDA NAIP 2014





**Dallas to Houston
High-Speed Rail Project
Land Use
Segment 3A
Sheet 47 of 257**

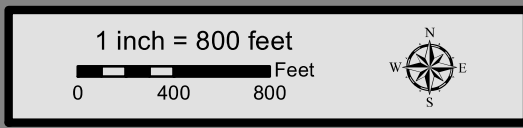
Legend

Track Configuration	Jurisdictional Boundaries
— Viaduct	▭ County Boundary
▬ Embankment	▭ City Boundary
▬ Cut	▭ USACE Bardwell Lake
Limits of Disturbance	▭ Fort Boggy SP
▭ Segment 1	Land Use
▭ Segment 2A	▭ Agriculture
▭ Segment 2B	▭ Civic
▭ Segment 3A	▭ Commercial
▭ Segment 3B	▭ Forested Area
▭ Segment 3C	▭ Industrial
▭ Segment 4	▭ Park
▭ Segment 5	▭ Residential
Structures	▭ Rural
◆ Agriculture	▭ Transportation
▲ Barn / Shed	▭ Unclassified
▭ Commercial	▭ Utility
▭ Commercial within LOD	▭ Vacant
▭ Community Facility	▭ Water Feature
▭ Community Facility within LOD	
☀ Cultural Resources	
● Oil / Gas	
▭ Residential	
▭ Residential within LOD	
⊗ Transportation	
○ Unknown Structure	
⊕ Utility	

*****This Sheet only depicts Segment 3A; Segments 3B & 3C are also located in this same area and can be referenced on Sheets 66 & 85.*****

*Inaccuracies in the original county appraisal district property data may result in misalignment with aerial imagery.
 *Only structures within 200 feet of the LOD were evaluated for analysis purposes. Land use is only displayed within a quarter mile of the LOD.

Data Sources: County/City Boundaries - TxDOT 2013; Land Use - Respective County Appraisal Districts (2011, 2015, 2016), CLS (2017)
Aerial Imagery: USDA NAIP 2014





**Dallas to Houston
High-Speed Rail Project
Land Use
Segment 3A
Sheet 48 of 257**

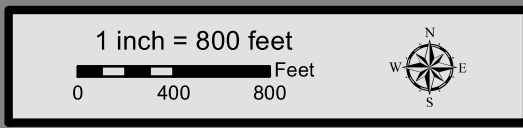
Legend

Track Configuration	Jurisdictional Boundaries
— Viaduct	▭ County Boundary
▬ Embankment	▭ City Boundary
▬ Cut	▭ USACE Bardwell Lake
Limits of Disturbance	▭ Fort Boggy SP
▭ Segment 1	Land Use
▭ Segment 2A	▭ Agriculture
▭ Segment 2B	▭ Civic
▭ Segment 3A	▭ Commercial
▭ Segment 3B	▭ Forested Area
▭ Segment 3C	▭ Industrial
▭ Segment 4	▭ Park
▭ Segment 5	▭ Residential
Structures	▭ Rural
◆ Agriculture	▭ Transportation
▲ Barn / Shed	▭ Unclassified
▭ Commercial	▭ Utility
▭ Commercial within LOD	▭ Vacant
▭ Community Facility	▭ Water Feature
▭ Community Facility within LOD	
☀ Cultural Resources	
● Oil / Gas	
▭ Residential	
▭ Residential within LOD	
⊗ Transportation	
○ Unknown Structure	
⊕ Utility	

This Sheet only depicts Segment 3A; Segment 3C is also located in this same area and can be referenced on Sheet 86.

*Inaccuracies in the original county appraisal district property data may result in misalignment with aerial imagery.
*Only structures within 200 feet of the LOD were evaluated for analysis purposes. Land use is only displayed within a quarter mile of the LOD.

Data Sources: County/City Boundaries - TxDOT 2013; Land Use - Respective County Appraisal Districts (2011, 2015, 2016), CLS (2017)
Aerial Imagery: USDA NAIP 2014





**Dallas to Houston
High-Speed Rail Project
Land Use
Segment 3A
Sheet 49 of 257**

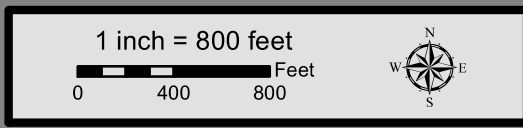
Legend

<p>Track Configuration</p> <ul style="list-style-type: none"> — Viaduct — Embankment — Cut <p>Limits of Disturbance</p> <ul style="list-style-type: none"> Segment 1 Segment 2A Segment 2B Segment 3A Segment 3B Segment 3C Segment 4 Segment 5 <p>Structures</p> <ul style="list-style-type: none"> Agriculture Barn / Shed Commercial Commercial within LOD Community Facility Community Facility within LOD Cultural Resources Oil / Gas Residential Residential within LOD Transportation Unknown Structure Utility 	<p>Jurisdictional Boundaries</p> <ul style="list-style-type: none"> County Boundary City Boundary USACE Bardwell Lake Fort Boggy SP <p>Land Use</p> <ul style="list-style-type: none"> Agriculture Civic Commercial Forested Area Industrial Park Residential Rural Transportation Unclassified Utility Vacant Water Feature
--	---

This Sheet only depicts Segment 3A; Segment 3C is also located in this same area and can be referenced on Sheet 87.

*Inaccuracies in the original county appraisal district property data may result in misalignment with aerial imagery.
*Only structures within 200 feet of the LOD were evaluated for analysis purposes. Land use is only displayed within a quarter mile of the LOD.

Data Sources: County/City Boundaries - TxDOT 2013; Land Use - Respective County Appraisal Districts (2011, 2015, 2016), CLS (2017)
Aerial Imagery: USDA NAIP 2014





**Dallas to Houston
High-Speed Rail Project
Land Use
Segment 3A
Sheet 50 of 257**

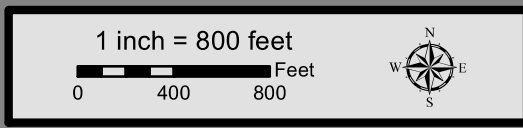
Legend

Track Configuration	Jurisdictional Boundaries
— Viaduct	▭ County Boundary
▬ Embankment	▭ City Boundary
▭ Cut	▭ USACE Bardwell Lake
Limits of Disturbance	▭ Fort Boggy SP
▭ Segment 1	Land Use
▭ Segment 2A	▭ Agriculture
▭ Segment 2B	▭ Civic
▭ Segment 3A	▭ Commercial
▭ Segment 3B	▭ Forested Area
▭ Segment 3C	▭ Industrial
▭ Segment 4	▭ Park
▭ Segment 5	▭ Residential
Structures	▭ Rural
◆ Agriculture	▭ Transportation
▲ Barn / Shed	▭ Unclassified
▭ Commercial	▭ Utility
▭ Commercial within LOD	▭ Vacant
▭ Community Facility	▭ Water Feature
▭ Community Facility within LOD	
✱ Cultural Resources	
● Oil / Gas	
▭ Residential	
▭ Residential within LOD	
⊗ Transportation	
○ Unknown Structure	
⊕ Utility	

This Sheet only depicts Segment 3A; Segment 3C is also located in this same area and can be referenced on Sheet 88.

*Inaccuracies in the original county appraisal district property data may result in misalignment with aerial imagery.
*Only structures within 200 feet of the LOD were evaluated for analysis purposes. Land use is only displayed within a quarter mile of the LOD.

Data Sources: County/City Boundaries - TxDOT 2013; Land Use - Respective County Appraisal Districts (2011, 2015, 2016), CLS (2017)
Aerial Imagery: USDA NAIP 2014





**Dallas to Houston
High-Speed Rail Project
Land Use
Segment 3A
Sheet 51 of 257**

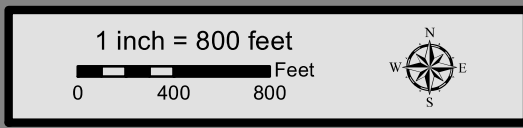
Legend

<p>Track Configuration</p> <ul style="list-style-type: none"> — Viaduct — Embankment — Cut <p>Limits of Disturbance</p> <ul style="list-style-type: none"> Segment 1 Segment 2A Segment 2B Segment 3A Segment 3B Segment 3C Segment 4 Segment 5 <p>Structures</p> <ul style="list-style-type: none"> Agriculture Barn / Shed Commercial Commercial within LOD Community Facility Community Facility within LOD Cultural Resources Oil / Gas Residential Residential within LOD Transportation Unknown Structure Utility 	<p>Jurisdictional Boundaries</p> <ul style="list-style-type: none"> County Boundary City Boundary USACE Bardwell Lake Fort Boggy SP <p>Land Use</p> <ul style="list-style-type: none"> Agriculture Civic Commercial Forested Area Industrial Park Residential Rural Transportation Unclassified Utility Vacant Water Feature
--	---

This Sheet only depicts Segment 3A; Segment 3C is also located in this same area and can be referenced on Sheet 89.

*Inaccuracies in the original county appraisal district property data may result in misalignment with aerial imagery.
*Only structures within 200 feet of the LOD were evaluated for analysis purposes. Land use is only displayed within a quarter mile of the LOD.

Data Sources: County/City Boundaries - TxDOT 2013; Land Use - Respective County Appraisal Districts (2011, 2015, 2016), CLS (2017)
Aerial Imagery: USDA NAIP 2014





**Dallas to Houston
High-Speed Rail Project
Land Use
Segment 3A
Sheet 52 of 257**

Legend	
Track Configuration	Jurisdictional Boundaries
— Viaduct	▭ County Boundary
— Embankment	▭ City Boundary
— Cut	▭ USACE Bardwell Lake
Limits of Disturbance	▭ Fort Boggy SP
▭ Segment 1	Land Use
▭ Segment 2A	▭ Agriculture
▭ Segment 2B	▭ Civic
▭ Segment 3A	▭ Commercial
▭ Segment 3B	▭ Forested Area
▭ Segment 3C	▭ Industrial
▭ Segment 4	▭ Park
▭ Segment 5	▭ Residential
Structures	▭ Rural
◆ Agriculture	▭ Transportation
▲ Barn / Shed	▭ Unclassified
■ Commercial	▭ Utility
■ Commercial within LOD	▭ Vacant
◆ Community Facility	▭ Water Feature
◆ Community Facility within LOD	
✱ Cultural Resources	
● Oil / Gas	
■ Residential	
■ Residential within LOD	
⊗ Transportation	
○ Unknown Structure	
⊕ Utility	

This Sheet only depicts Segment 3A; Segment 3C is also located in this same area and can be referenced on Sheet 90.

*Inaccuracies in the original county appraisal district property data may result in misalignment with aerial imagery.
*Only structures within 200 feet of the LOD were evaluated for analysis purposes. Land use is only displayed within a quarter mile of the LOD.

Data Sources: County/City Boundaries - TxDOT 2013; Land Use - Respective County Appraisal Districts (2011, 2015, 2016), CLS (2017)
Aerial Imagery: USDA NAIP 2014





**Dallas to Houston
High-Speed Rail Project
Land Use
Segment 3A
Sheet 53 of 257**

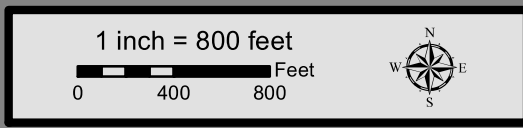
Legend

Track Configuration	Jurisdictional Boundaries
— Viaduct	▭ County Boundary
— Embankment	▭ City Boundary
— Cut	▭ USACE Bardwell Lake
Limits of Disturbance	▭ Fort Boggy SP
▭ Segment 1	Land Use
▭ Segment 2A	▭ Agriculture
▭ Segment 2B	▭ Civic
▭ Segment 3A	▭ Commercial
▭ Segment 3B	▭ Forested Area
▭ Segment 3C	▭ Industrial
▭ Segment 4	▭ Park
▭ Segment 5	▭ Residential
Structures	▭ Rural
◆ Agriculture	▭ Transportation
▲ Barn / Shed	▭ Unclassified
▭ Commercial	▭ Utility
▭ Commercial within LOD	▭ Vacant
▭ Community Facility	▭ Water Feature
▭ Community Facility within LOD	
✱ Cultural Resources	
● Oil / Gas	
▭ Residential	
▭ Residential within LOD	
⊗ Transportation	
○ Unknown Structure	
⊕ Utility	

This Sheet only depicts Segment 3A; Segment 3C is also located in this same area and can be referenced on Sheet 91.

*Inaccuracies in the original county appraisal district property data may result in misalignment with aerial imagery.
*Only structures within 200 feet of the LOD were evaluated for analysis purposes. Land use is only displayed within a quarter mile of the LOD.

Data Sources: County/City Boundaries - TxDOT 2013; Land Use - Respective County Appraisal Districts (2011, 2015, 2016), CLS (2017)
Aerial Imagery: USDA NAIP 2014





**Dallas to Houston
High-Speed Rail Project
Land Use
Segment 3A
Sheet 54 of 257**

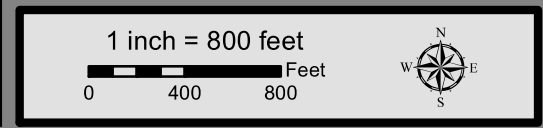
Legend

<p>Track Configuration</p> <ul style="list-style-type: none"> — Viaduct — Embankment — Cut <p>Limits of Disturbance</p> <ul style="list-style-type: none"> — Segment 1 — Segment 2A — Segment 2B — Segment 3A — Segment 3B — Segment 3C — Segment 4 — Segment 5 <p>Structures</p> <ul style="list-style-type: none"> ◆ Agriculture ▲ Barn / Shed ■ Commercial ■ Commercial within LOD ◆ Community Facility ◆ Community Facility within LOD ✱ Cultural Resources ● Oil / Gas ■ Residential ■ Residential within LOD ⊗ Transportation ○ Unknown Structure ⊕ Utility 	<p>Jurisdictional Boundaries</p> <ul style="list-style-type: none"> — County Boundary — City Boundary — USACE Bardwell Lake — Fort Boggy SP <p>Land Use</p> <ul style="list-style-type: none"> — Agriculture — Civic — Commercial — Forested Area — Industrial — Park — Residential — Rural — Rural — Transportation — Unclassified — Utility — Vacant — Water Feature
--	--

This Sheet only depicts Segment 3A; Segment 3C is also located in this same area and can be referenced on Sheet 92.

*Inaccuracies in the original county appraisal district property data may result in misalignment with aerial imagery.
 *Only structures within 200 feet of the LOD were evaluated for analysis purposes. Land use is only displayed within a quarter mile of the LOD.

Data Sources: County/City Boundaries - TxDOT 2013; Land Use - Respective County Appraisal Districts (2011, 2015, 2016), CLS (2017)
Aerial Imagery: USDA NAIP 2014





**Dallas to Houston
High-Speed Rail Project
Land Use
Segment 3A
Sheet 55 of 257**

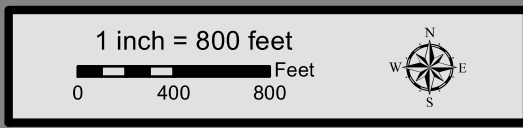
Legend

Track Configuration	Jurisdictional Boundaries
— Viaduct	▭ County Boundary
— Embankment	▭ City Boundary
— Cut	▭ USACE Bardwell Lake
Limits of Disturbance	▭ Fort Boggy SP
▭ Segment 1	Land Use
▭ Segment 2A	▭ Agriculture
▭ Segment 2B	▭ Civic
▭ Segment 3A	▭ Commercial
▭ Segment 3B	▭ Forested Area
▭ Segment 3C	▭ Industrial
▭ Segment 4	▭ Park
▭ Segment 5	▭ Residential
Structures	▭ Rural
◆ Agriculture	▭ Transportation
▲ Barn / Shed	▭ Unclassified
▭ Commercial	▭ Utility
▭ Commercial within LOD	▭ Vacant
▭ Community Facility	▭ Water Feature
▭ Community Facility within LOD	
☀ Cultural Resources	
● Oil / Gas	
▭ Residential	
▭ Residential within LOD	
⊗ Transportation	
○ Unknown Structure	
⊕ Utility	

This Sheet only depicts Segment 3A; Segment 3C is also located in this same area and can be referenced on Sheet 93.

*Inaccuracies in the original county appraisal district property data may result in misalignment with aerial imagery.
*Only structures within 200 feet of the LOD were evaluated for analysis purposes. Land use is only displayed within a quarter mile of the LOD.

Data Sources: County/City Boundaries - TxDOT 2013; Land Use - Respective County Appraisal Districts (2011, 2015, 2016), CLS (2017)
Aerial Imagery: USDA NAIP 2014





**Dallas to Houston
High-Speed Rail Project
Land Use
Segment 3A
Sheet 56 of 257**

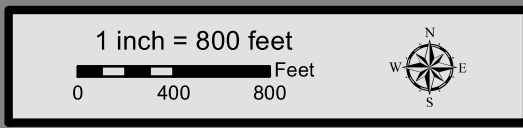
Legend

Track Configuration	Jurisdictional Boundaries
— Viaduct	▭ County Boundary
▬ Embankment	▭ City Boundary
▭ Cut	▭ USACE Bardwell Lake
Limits of Disturbance	▭ Fort Boggy SP
▭ Segment 1	Land Use
▭ Segment 2A	▭ Agriculture
▭ Segment 2B	▭ Civic
▭ Segment 3A	▭ Commercial
▭ Segment 3B	▭ Forested Area
▭ Segment 3C	▭ Industrial
▭ Segment 4	▭ Park
▭ Segment 5	▭ Residential
Structures	▭ Rural
◆ Agriculture	▭ Transportation
▲ Barn / Shed	▭ Unclassified
▭ Commercial	▭ Utility
▭ Commercial within LOD	▭ Vacant
▭ Community Facility	▭ Water Feature
▭ Community Facility within LOD	
☀ Cultural Resources	
● Oil / Gas	
▭ Residential	
▭ Residential within LOD	
⊗ Transportation	
○ Unknown Structure	
⊕ Utility	

This Sheet only depicts Segment 3A; Segment 3C is also located in this same area and can be referenced on Sheet 94.

*Inaccuracies in the original county appraisal district property data may result in misalignment with aerial imagery.
*Only structures within 200 feet of the LOD were evaluated for analysis purposes. Land use is only displayed within a quarter mile of the LOD.

Data Sources: County/City Boundaries - TxDOT 2013; Land Use - Respective County Appraisal Districts (2011, 2015, 2016), CLS (2017)
Aerial Imagery: USDA NAIP 2014





**Dallas to Houston
High-Speed Rail Project
Land Use
Segment 3A
Sheet 57 of 257**

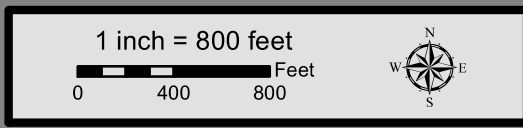
Legend

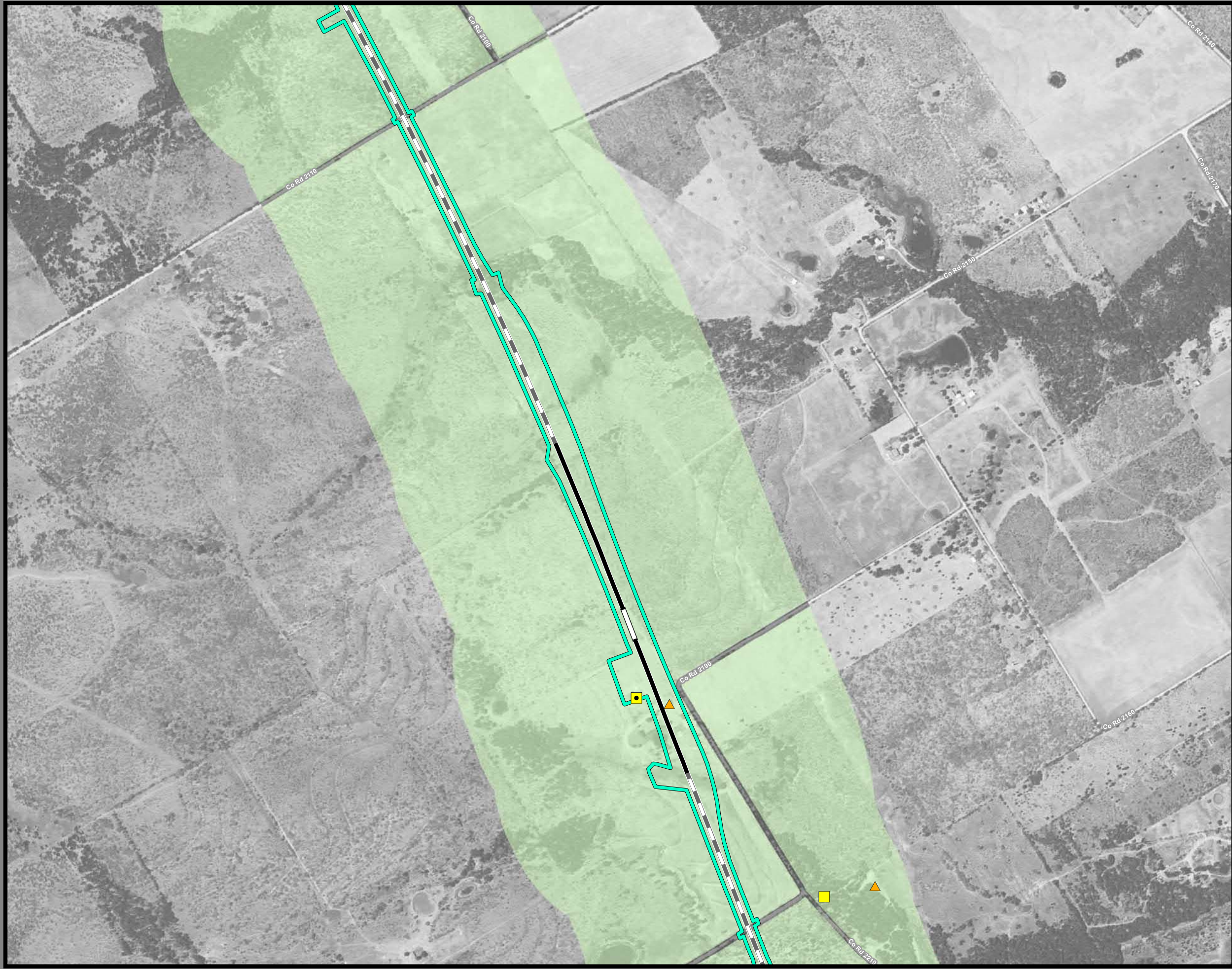
<p>Track Configuration</p> <ul style="list-style-type: none"> — Viaduct — Embankment — Cut <p>Limits of Disturbance</p> <ul style="list-style-type: none"> Segment 1 Segment 2A Segment 2B Segment 3A Segment 3B Segment 3C Segment 4 Segment 5 <p>Structures</p> <ul style="list-style-type: none"> Agriculture Barn / Shed Commercial Commercial within LOD Community Facility Community Facility within LOD Cultural Resources Oil / Gas Residential Residential within LOD Transportation Unknown Structure Utility 	<p>Jurisdictional Boundaries</p> <ul style="list-style-type: none"> County Boundary City Boundary USACE Bardwell Lake Fort Boggy SP <p>Land Use</p> <ul style="list-style-type: none"> Agriculture Civic Commercial Forested Area Industrial Park Residential Rural Transportation Unclassified Utility Vacant Water Feature
--	---

This Sheet only depicts Segment 3A; Segment 3B is also located in this same area and can be referenced on Sheet 76.

*Inaccuracies in the original county appraisal district property data may result in misalignment with aerial imagery.
*Only structures within 200 feet of the LOD were evaluated for analysis purposes. Land use is only displayed within a quarter mile of the LOD.

Data Sources: County/City Boundaries - TxDOT 2013; Land Use - Respective County Appraisal Districts (2011, 2015, 2016), CLS (2017)
Aerial Imagery: USDA NAIP 2014





**Dallas to Houston
High-Speed Rail Project
Land Use
Segment 3A
Sheet 58 of 257**

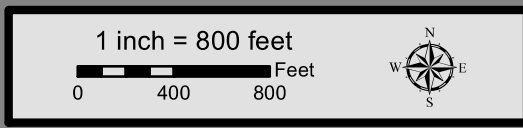
Legend

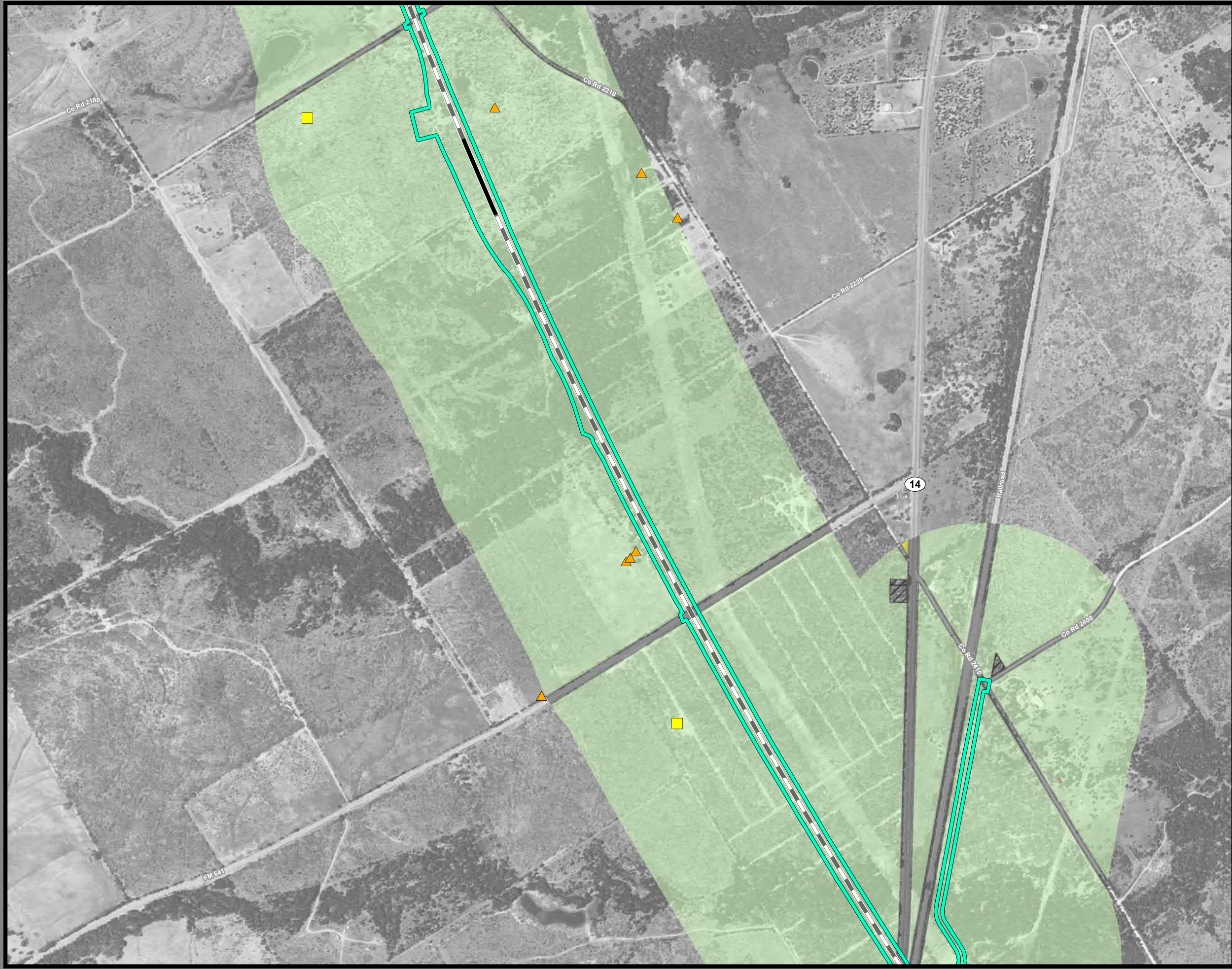
Track Configuration	Jurisdictional Boundaries
— Viaduct	▭ County Boundary
▬ Embankment	▭ City Boundary
▬ Cut	▭ USACE Bardwell Lake
Limits of Disturbance	▭ Fort Boggy SP
▭ Segment 1	Land Use
▭ Segment 2A	▭ Agriculture
▭ Segment 2B	▭ Civic
▭ Segment 3A	▭ Commercial
▭ Segment 3B	▭ Forested Area
▭ Segment 3C	▭ Industrial
▭ Segment 4	▭ Park
▭ Segment 5	▭ Residential
Structures	▭ Rural
◆ Agriculture	▭ Transportation
▲ Barn / Shed	▭ Unclassified
▭ Commercial	▭ Utility
▭ Commercial within LOD	▭ Vacant
▭ Community Facility	▭ Water Feature
▭ Community Facility within LOD	
☀ Cultural Resources	
● Oil / Gas	
▭ Residential	
▭ Residential within LOD	
⊗ Transportation	
○ Unknown Structure	
⊕ Utility	

This Sheet only depicts Segment 3A; Segment 3B is also located in this same area and can be referenced on Sheet 77.

*Inaccuracies in the original county appraisal district property data may result in misalignment with aerial imagery.
*Only structures within 200 feet of the LOD were evaluated for analysis purposes. Land use is only displayed within a quarter mile of the LOD.

Data Sources: County/City Boundaries - TxDOT 2013; Land Use - Respective County Appraisal Districts (2011, 2015, 2016), CLS (2017)
Aerial Imagery: USDA NAIP 2014





**Dallas to Houston
High-Speed Rail Project
Land Use
Segment 3A
Sheet 59 of 257**

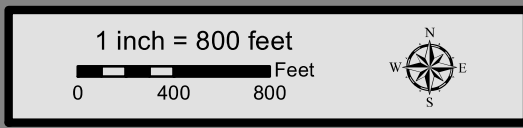
Legend

<p>Track Configuration</p> <ul style="list-style-type: none"> — Viaduct — Embankment — Cut <p>Limits of Disturbance</p> <ul style="list-style-type: none"> Segment 1 Segment 2A Segment 2B Segment 3A Segment 3B Segment 3C Segment 4 Segment 5 <p>Structures</p> <ul style="list-style-type: none"> Agriculture Barn / Shed Commercial Commercial within LOD Community Facility Community Facility within LOD Cultural Resources Oil / Gas Residential Residential within LOD Transportation Unknown Structure Utility 	<p>Jurisdictional Boundaries</p> <ul style="list-style-type: none"> County Boundary City Boundary USACE Bardwell Lake Fort Boggy SP <p>Land Use</p> <ul style="list-style-type: none"> Agriculture Civic Commercial Forested Area Industrial Park Residential Rural Transportation Unclassified Utility Vacant Water Feature
--	---

This Sheet only depicts Segment 3A; Segment 3B is also located in this same area and can be referenced on Sheet 78.

*Inaccuracies in the original county appraisal district property data may result in misalignment with aerial imagery.
*Only structures within 200 feet of the LOD were evaluated for analysis purposes. Land use is only displayed within a quarter mile of the LOD.

Data Sources: County/City Boundaries - TxDOT 2013; Land Use - Respective County Appraisal Districts (2011, 2015, 2016), CLS (2017)
Aerial Imagery: USDA NAIP 2014





**Dallas to Houston
High-Speed Rail Project
Land Use
Segment 3A
Sheet 60 of 257**

Legend

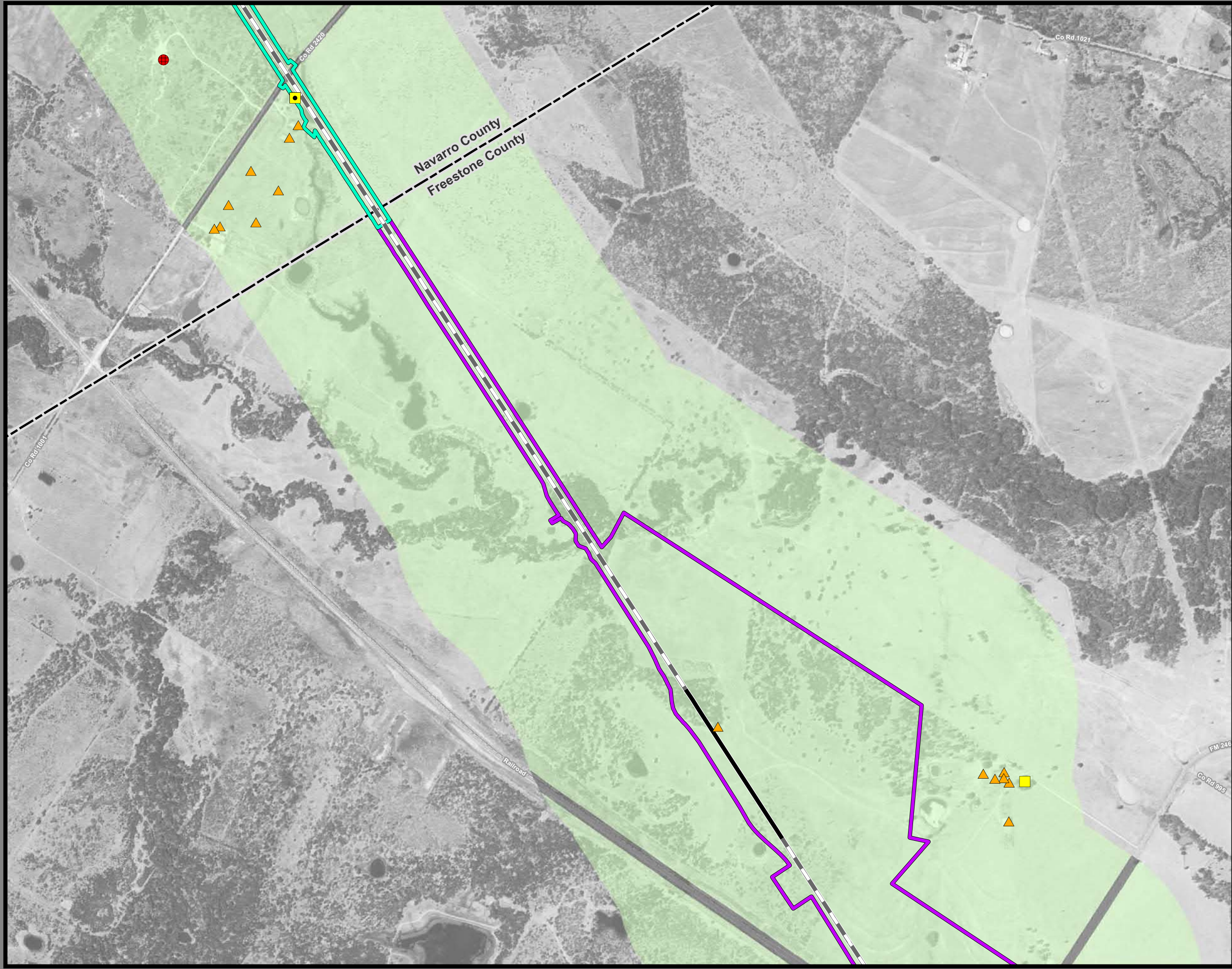
Track Configuration	Jurisdictional Boundaries
— Viaduct	▭ County Boundary
— Embankment	▭ City Boundary
— Cut	▭ USACE Bardwell Lake
Limits of Disturbance	▭ Fort Bogy SP
▭ Segment 1	Land Use
▭ Segment 2A	▭ Agriculture
▭ Segment 2B	▭ Civic
▭ Segment 3A	▭ Commercial
▭ Segment 3B	▭ Forested Area
▭ Segment 3C	▭ Industrial
▭ Segment 4	▭ Park
▭ Segment 5	▭ Residential
Structures	▭ Rural
◆ Agriculture	▭ Transportation
▲ Barn / Shed	▭ Unclassified
■ Commercial	▭ Utility
■ Commercial within LOD	▭ Vacant
◆ Community Facility	▭ Water Feature
◆ Community Facility within LOD	
✱ Cultural Resources	
● Oil / Gas	
■ Residential	
■ Residential within LOD	
⊗ Transportation	
○ Unknown Structure	
⊕ Utility	

This Sheet only depicts Segment 3A; Segment 3B is also located in this same area and can be referenced on Sheet 79.

*Inaccuracies in the original county appraisal district property data may result in misalignment with aerial imagery.
*Only structures within 200 feet of the LOD were evaluated for analysis purposes. Land use is only displayed within a quarter mile of the LOD.

Data Sources: County/City Boundaries - TxDOT 2013; Land Use - Respective County Appraisal Districts (2011, 2015, 2016), CLS (2017)
Aerial Imagery: USDA NAIP 2014





**Dallas to Houston
High-Speed Rail Project
Land Use
Segment 3A, 4
Sheet 61 of 257**

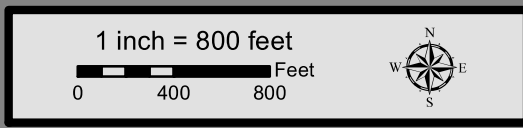
Legend

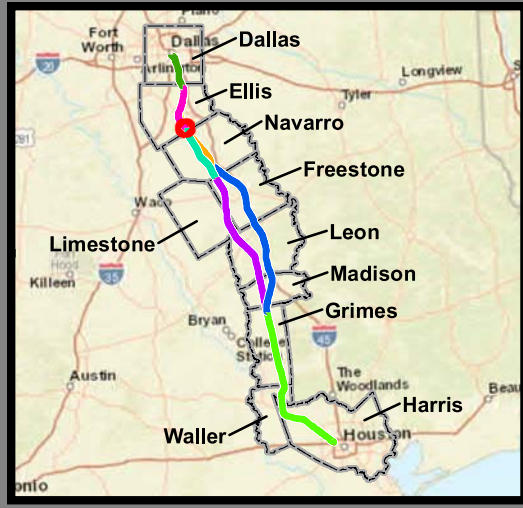
<p>Track Configuration</p> <ul style="list-style-type: none"> — Viaduct — Embankment — Cut <p>Limits of Disturbance</p> <ul style="list-style-type: none"> — Segment 1 — Segment 2A — Segment 2B — Segment 3A — Segment 3B — Segment 3C — Segment 4 — Segment 5 <p>Structures</p> <ul style="list-style-type: none"> ◆ Agriculture ▲ Barn / Shed ■ Commercial ■ Commercial within LOD ■ Community Facility ■ Community Facility within LOD ☀ Cultural Resources ● Oil / Gas ■ Residential ■ Residential within LOD ⊗ Transportation ○ Unknown Structure ⊕ Utility 	<p>Jurisdictional Boundaries</p> <ul style="list-style-type: none"> — County Boundary — City Boundary — USACE Bardwell Lake — Fort Boggy SP <p>Land Use</p> <ul style="list-style-type: none"> — Agriculture — Civic — Commercial — Forested Area — Industrial — Park — Residential — Rural — Transportation — Unclassified — Utility — Vacant — Water Feature
--	---

This Sheet only depicts Segments 3A & 4; Segment 3B is also located in this same area and can be referenced on Sheet 80.

*Inaccuracies in the original county appraisal district property data may result in misalignment with aerial imagery.
*Only structures within 200 feet of the LOD were evaluated for analysis purposes. Land use is only displayed within a quarter mile of the LOD.

Data Sources: County/City Boundaries - TxDOT 2013; Land Use - Respective County Appraisal Districts (2011, 2015, 2016), CLS (2017)
Aerial Imagery: USDA NAIP 2014





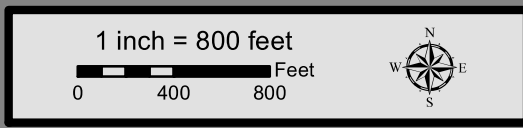
**Dallas to Houston
High-Speed Rail Project
Land Use
Segment 2B, 3B
Sheet 62 of 257**

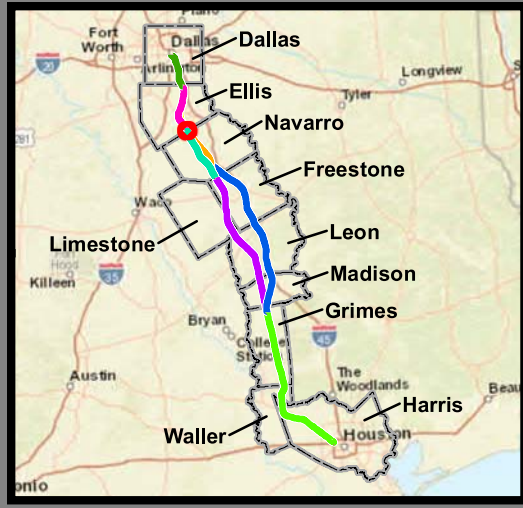
Legend	
Track Configuration	Jurisdictional Boundaries
— Viaduct	▭ County Boundary
— Embankment	▭ City Boundary
— Cut	▭ USACE Bardwell Lake
Limits of Disturbance	▭ Fort Boggy SP
▭ Segment 1	Land Use
▭ Segment 2A	▭ Agriculture
▭ Segment 2B	▭ Civic
▭ Segment 3A	▭ Commercial
▭ Segment 3B	▭ Forested Area
▭ Segment 3C	▭ Industrial
▭ Segment 4	▭ Park
▭ Segment 5	▭ Residential
Structures	▭ Rural
◆ Agriculture	▭ Transportation
▲ Barn / Shed	▭ Unclassified
■ Commercial	▭ Utility
■ Commercial within LOD	▭ Vacant
◆ Community Facility	▭ Water Feature
◆ Community Facility within LOD	
✱ Cultural Resources	
● Oil / Gas	
■ Residential	
■ Residential within LOD	
⊗ Transportation	
○ Unknown Structure	
⊕ Utility	

This Sheet only depicts Segments 2B & 3B; Segments 2A, 3A & 3C are also located in this same area and can be referenced on Sheets 27, 44 & 82.

*Inaccuracies in the original county appraisal district property data may result in misalignment with aerial imagery.
*Only structures within 200 feet of the LOD were evaluated for analysis purposes. Land use is only displayed within a quarter mile of the LOD.

Data Sources: County/City Boundaries - TxDOT 2013; Land Use - Respective County Appraisal Districts (2011, 2015, 2016), CLS (2017)
Aerial Imagery: USDA NAIP 2014





**Dallas to Houston
High-Speed Rail Project
Land Use
Segment 3B
Sheet 63 of 257**

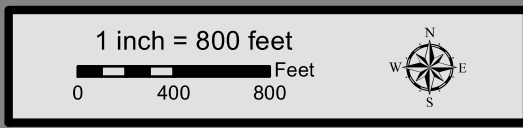
Legend

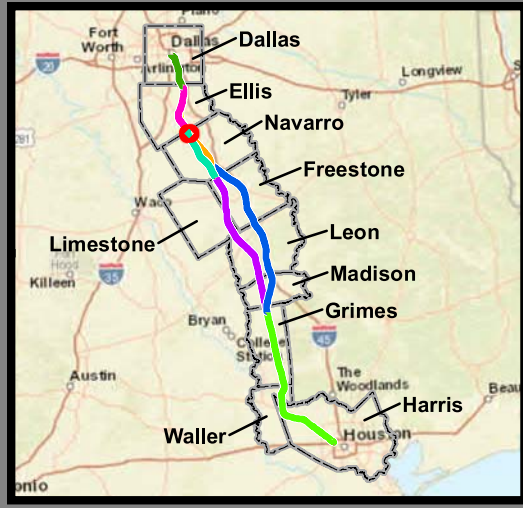
<p>Track Configuration</p> <ul style="list-style-type: none"> — Viaduct — Embankment — Cut <p>Limits of Disturbance</p> <ul style="list-style-type: none"> Segment 1 Segment 2A Segment 2B Segment 3A Segment 3B Segment 3C Segment 4 Segment 5 <p>Structures</p> <ul style="list-style-type: none"> Agriculture Barn / Shed Commercial Commercial within LOD Community Facility Community Facility within LOD Cultural Resources Oil / Gas Residential Residential within LOD Transportation Unknown Structure Utility 	<p>Jurisdictional Boundaries</p> <ul style="list-style-type: none"> County Boundary City Boundary USACE Bardwell Lake Fort Boggy SP <p>Land Use</p> <ul style="list-style-type: none"> Agriculture Civic Commercial Forested Area Industrial Park Residential Rural Transportation Unclassified Utility Vacant Water Feature
--	---

This Sheet only depicts Segment 3B; Segments 3A & 3C are also located in this same area and can be referenced on Sheets 44 & 82.

*Inaccuracies in the original county appraisal district property data may result in misalignment with aerial imagery.
*Only structures within 200 feet of the LOD were evaluated for analysis purposes. Land use is only displayed within a quarter mile of the LOD.

Data Sources: County/City Boundaries - TxDOT 2013; Land Use - Respective County Appraisal Districts (2011, 2015, 2016), CLS (2017)
Aerial Imagery: USDA NAIP 2014





**Dallas to Houston
High-Speed Rail Project
Land Use
Segment 3B
Sheet 64 of 257**

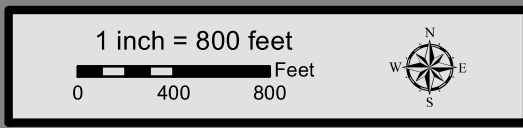
Legend

Track Configuration	Jurisdictional Boundaries
— Viaduct	▭ County Boundary
▬ Embankment	▭ City Boundary
▬ Cut	▭ USACE Bardwell Lake
Limits of Disturbance	▭ Fort Boggy SP
▭ Segment 1	Land Use
▭ Segment 2A	▭ Agriculture
▭ Segment 2B	▭ Civic
▭ Segment 3A	▭ Commercial
▭ Segment 3B	▭ Forested Area
▭ Segment 3C	▭ Industrial
▭ Segment 4	▭ Park
▭ Segment 5	▭ Residential
Structures	▭ Rural
◆ Agriculture	▭ Transportation
▲ Barn / Shed	▭ Unclassified
▭ Commercial	▭ Utility
▭ Commercial within LOD	▭ Vacant
▭ Community Facility	▭ Water Feature
▭ Community Facility within LOD	
☀ Cultural Resources	
● Oil / Gas	
▭ Residential	
▭ Residential within LOD	
⊗ Transportation	
○ Unknown Structure	
⊕ Utility	

*****This Sheet only depicts Segment 3B; Segments 3A & 3C are also located in this same area and can be referenced on Sheets 45 & 83.*****

*Inaccuracies in the original county appraisal district property data may result in misalignment with aerial imagery.
*Only structures within 200 feet of the LOD were evaluated for analysis purposes. Land use is only displayed within a quarter mile of the LOD.

Data Sources: County/City Boundaries - TxDOT 2013; Land Use - Respective County Appraisal Districts (2011, 2015, 2016), CLS (2017)
Aerial Imagery: USDA NAIP 2014





**Dallas to Houston
High-Speed Rail Project
Land Use
Segment 3B
Sheet 65 of 257**

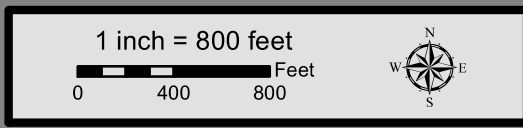
Legend

Track Configuration	Jurisdictional Boundaries
— Viaduct	▭ County Boundary
▬ Embankment	▭ City Boundary
▬ Cut	▭ USACE Bardwell Lake
Limits of Disturbance	▭ Fort Boggy SP
▭ Segment 1	Land Use
▭ Segment 2A	▭ Agriculture
▭ Segment 2B	▭ Civic
▭ Segment 3A	▭ Commercial
▭ Segment 3B	▭ Forested Area
▭ Segment 3C	▭ Industrial
▭ Segment 4	▭ Park
▭ Segment 5	▭ Residential
Structures	▭ Rural
◆ Agriculture	▭ Transportation
▲ Barn / Shed	▭ Unclassified
▭ Commercial	▭ Utility
▭ Commercial within LOD	▭ Vacant
▭ Community Facility	▭ Water Feature
▭ Community Facility within LOD	
☀ Cultural Resources	
● Oil / Gas	
▭ Residential	
▭ Residential within LOD	
⊗ Transportation	
○ Unknown Structure	
⊕ Utility	

*****This Sheet only depicts Segment 3B; Segments 3A & 3C are also located in this same area and can be referenced on Sheets 46 & 84.*****

*Inaccuracies in the original county appraisal district property data may result in misalignment with aerial imagery.
*Only structures within 200 feet of the LOD were evaluated for analysis purposes. Land use is only displayed within a quarter mile of the LOD.

Data Sources: County/City Boundaries - TxDOT 2013; Land Use - Respective County Appraisal Districts (2011, 2015, 2016), CLS (2017)
Aerial Imagery: USDA NAIP 2014





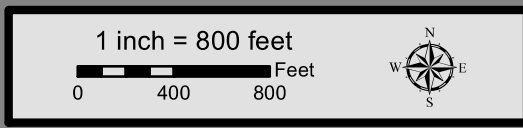
**Dallas to Houston
High-Speed Rail Project
Land Use
Segment 3B
Sheet 66 of 257**

Legend	
Track Configuration	Jurisdictional Boundaries
— Viaduct	▭ County Boundary
▬ Embankment	▭ City Boundary
▬ Cut	▭ USACE Bardwell Lake
Limits of Disturbance	▭ Fort Boggy SP
▭ Segment 1	Land Use
▭ Segment 2A	▭ Agriculture
▭ Segment 2B	▭ Civic
▭ Segment 3A	▭ Commercial
▭ Segment 3B	▭ Forested Area
▭ Segment 3C	▭ Industrial
▭ Segment 4	▭ Park
▭ Segment 5	▭ Residential
Structures	▭ Rural
◆ Agriculture	▭ Transportation
▲ Barn / Shed	▭ Unclassified
▭ Commercial	▭ Utility
▭ Commercial within LOD	▭ Vacant
▭ Community Facility	▭ Water Feature
▭ Community Facility within LOD	
☼ Cultural Resources	
● Oil / Gas	
▭ Residential	
▭ Residential within LOD	
⊗ Transportation	
○ Unknown Structure	
⊕ Utility	

This Sheet only depicts Segment 3B; Segments 3A & 3C are also located in this same area and can be referenced on Sheets 47 & 85.

*Inaccuracies in the original county appraisal district property data may result in misalignment with aerial imagery.
*Only structures within 200 feet of the LOD were evaluated for analysis purposes. Land use is only displayed within a quarter mile of the LOD.

Data Sources: County/City Boundaries - TxDOT 2013; Land Use - Respective County Appraisal Districts (2011, 2015, 2016), CLS (2017)
Aerial Imagery: USDA NAIP 2014



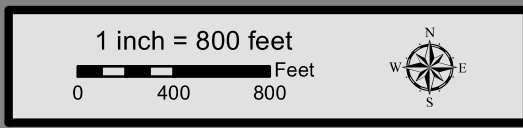


**Dallas to Houston
High-Speed Rail Project
Land Use
Segment 3B
Sheet 67 of 257**

Legend

<p>Track Configuration</p> <ul style="list-style-type: none"> — Viaduct — Embankment — Cut <p>Limits of Disturbance</p> <ul style="list-style-type: none"> Segment 1 Segment 2A Segment 2B Segment 3A Segment 3B Segment 3C Segment 4 Segment 5 <p>Structures</p> <ul style="list-style-type: none"> Agriculture Barn / Shed Commercial Commercial within LOD Community Facility Community Facility within LOD Cultural Resources Oil / Gas Residential Residential within LOD Transportation Unknown Structure Utility 	<p>Jurisdictional Boundaries</p> <ul style="list-style-type: none"> County Boundary City Boundary USACE Bardwell Lake Fort Boggy SP <p>Land Use</p> <ul style="list-style-type: none"> Agriculture Civic Commercial Forested Area Industrial Park Residential Rural Transportation Unclassified Utility Vacant Water Feature
--	---

*Inaccuracies in the original county appraisal district property data may result in misalignment with aerial imagery.
*Only structures within 200 feet of the LOD were evaluated for analysis purposes. Land use is only displayed within a quarter mile of the LOD.
Data Sources: County/City Boundaries - TxDOT 2013; Land Use - Respective County Appraisal Districts (2011, 2015, 2016), CLS (2017)
Aerial Imagery: USDA NAIP 2014





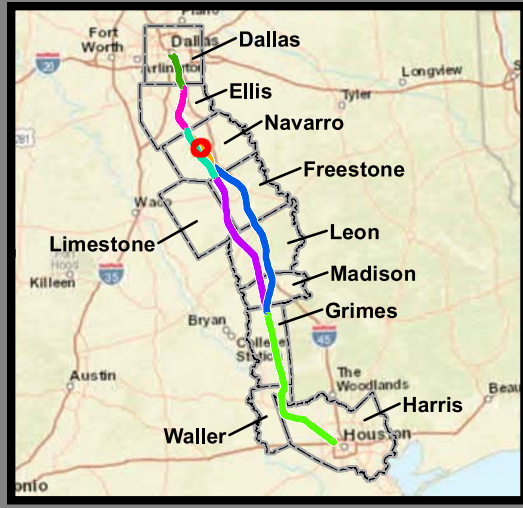
**Dallas to Houston
High-Speed Rail Project
Land Use
Segment 3B
Sheet 68 of 257**

Legend

Track Configuration	Jurisdictional Boundaries
— Viaduct	▭ County Boundary
— Embankment	▭ City Boundary
— Cut	▭ USACE Bardwell Lake
Limits of Disturbance	▭ Fort Boggy SP
▭ Segment 1	Land Use
▭ Segment 2A	▭ Agriculture
▭ Segment 2B	▭ Civic
▭ Segment 3A	▭ Commercial
▭ Segment 3B	▭ Forested Area
▭ Segment 3C	▭ Industrial
▭ Segment 4	▭ Park
▭ Segment 5	▭ Residential
Structures	▭ Rural
◆ Agriculture	▭ Transportation
▲ Barn / Shed	▭ Unclassified
■ Commercial	▭ Utility
■ Commercial within LOD	▭ Vacant
◆ Community Facility	▭ Water Feature
◆ Community Facility within LOD	
✱ Cultural Resources	
● Oil / Gas	
■ Residential	
■ Residential within LOD	
⊗ Transportation	
○ Unknown Structure	
⊕ Utility	

*Inaccuracies in the original county appraisal district property data may result in misalignment with aerial imagery.
*Only structures within 200 feet of the LOD were evaluated for analysis purposes. Land use is only displayed within a quarter mile of the LOD.
Data Sources: County/City Boundaries - TxDOT 2013; Land Use - Respective County Appraisal Districts (2011, 2015, 2016), CLS (2017)
Aerial Imagery: USDA NAIP 2014



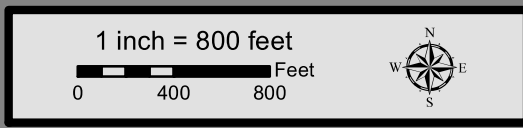


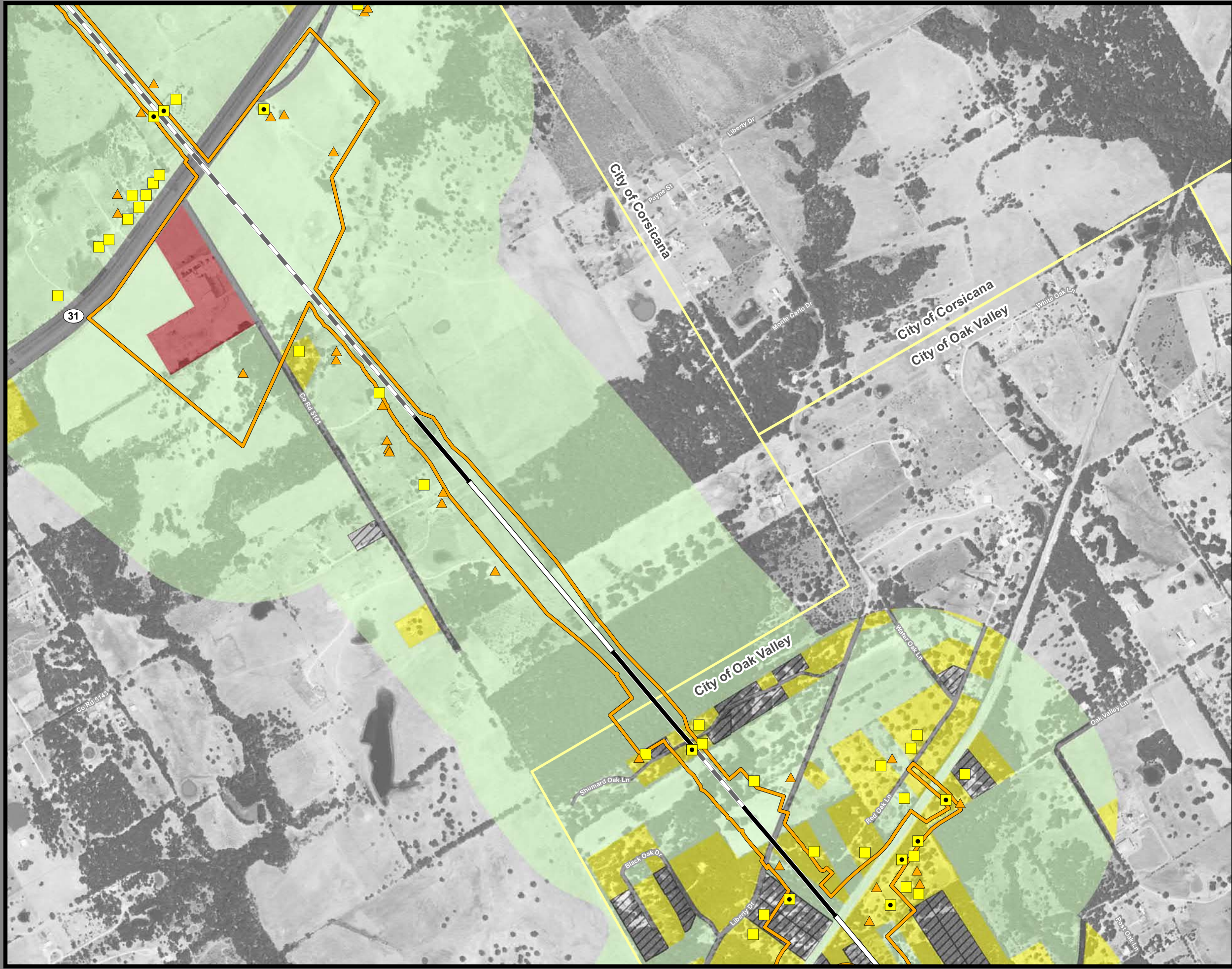
**Dallas to Houston
High-Speed Rail Project
Land Use
Segment 3B
Sheet 69 of 257**

Legend

<p>Track Configuration</p> <ul style="list-style-type: none"> — Viaduct — Embankment — Cut <p>Limits of Disturbance</p> <ul style="list-style-type: none"> Segment 1 Segment 2A Segment 2B Segment 3A Segment 3B Segment 3C Segment 4 Segment 5 <p>Structures</p> <ul style="list-style-type: none"> Agriculture Barn / Shed Commercial Commercial within LOD Community Facility Community Facility within LOD Cultural Resources Oil / Gas Residential Residential within LOD Transportation Unknown Structure Utility 	<p>Jurisdictional Boundaries</p> <ul style="list-style-type: none"> County Boundary City Boundary USACE Bardwell Lake Fort Boggy SP <p>Land Use</p> <ul style="list-style-type: none"> Agriculture Civic Commercial Forested Area Industrial Park Residential Rural Transportation Unclassified Utility Vacant Water Feature
--	---

*Inaccuracies in the original county appraisal district property data may result in misalignment with aerial imagery.
*Only structures within 200 feet of the LOD were evaluated for analysis purposes. Land use is only displayed within a quarter mile of the LOD.
Data Sources: County/City Boundaries - TxDOT 2013; Land Use - Respective County Appraisal Districts (2011, 2015, 2016), CLS (2017)
Aerial Imagery: USDA NAIP 2014



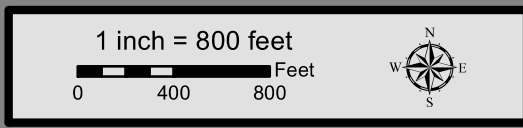


**Dallas to Houston
High-Speed Rail Project
Land Use
Segment 3B
Sheet 70 of 257**

Legend

<p>Track Configuration</p> <ul style="list-style-type: none"> — Viaduct — Embankment — Cut <p>Limits of Disturbance</p> <ul style="list-style-type: none"> Segment 1 Segment 2A Segment 2B Segment 3A Segment 3B Segment 3C Segment 4 Segment 5 <p>Structures</p> <ul style="list-style-type: none"> Agriculture Barn / Shed Commercial Commercial within LOD Community Facility Community Facility within LOD Cultural Resources Oil / Gas Residential Residential within LOD Transportation Unknown Structure Utility 	<p>Jurisdictional Boundaries</p> <ul style="list-style-type: none"> County Boundary City Boundary USACE Bardwell Lake Fort Boggy SP <p>Land Use</p> <ul style="list-style-type: none"> Agriculture Civic Commercial Forested Area Industrial Park Residential Rural Transportation Unclassified Utility Vacant Water Feature
--	---

*Inaccuracies in the original county appraisal district property data may result in misalignment with aerial imagery.
 *Only structures within 200 feet of the LOD were evaluated for analysis purposes. Land use is only displayed within a quarter mile of the LOD.
Data Sources: County/City Boundaries - TxDOT 2013; Land Use - Respective County Appraisal Districts (2011, 2015, 2016), CLS (2017)
Aerial Imagery: USDA NAIP 2014



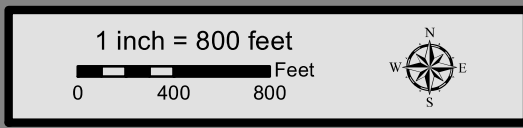


**Dallas to Houston
High-Speed Rail Project
Land Use
Segment 3B
Sheet 71 of 257**

Legend

<p>Track Configuration</p> <ul style="list-style-type: none"> — Viaduct — Embankment — Cut <p>Limits of Disturbance</p> <ul style="list-style-type: none"> — Segment 1 — Segment 2A — Segment 2B — Segment 3A — Segment 3B — Segment 3C — Segment 4 — Segment 5 <p>Structures</p> <ul style="list-style-type: none"> ◆ Agriculture ▲ Barn / Shed ■ Commercial ■ Commercial within LOD ◆ Community Facility ◆ Community Facility within LOD ✱ Cultural Resources ● Oil / Gas ■ Residential ■ Residential within LOD ⊗ Transportation ○ Unknown Structure ⊕ Utility 	<p>Jurisdictional Boundaries</p> <ul style="list-style-type: none"> — County Boundary — City Boundary — USACE Bardwell Lake — Fort Boggy SP <p>Land Use</p> <ul style="list-style-type: none"> — Agriculture — Civic — Commercial — Forested Area — Industrial — Park — Residential — Rural — Transportation — Unclassified — Utility — Vacant — Water Feature
--	---

*Inaccuracies in the original county appraisal district property data may result in misalignment with aerial imagery.
 *Only structures within 200 feet of the LOD were evaluated for analysis purposes. Land use is only displayed within a quarter mile of the LOD.
Data Sources: County/City Boundaries - TxDOT 2013; Land Use - Respective County Appraisal Districts (2011, 2015, 2016), CLS (2017)
Aerial Imagery: USDA NAIP 2014



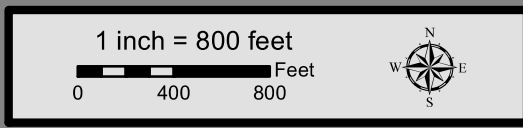


**Dallas to Houston
High-Speed Rail Project
Land Use
Segment 3B
Sheet 72 of 257**

Legend

<p>Track Configuration</p> <ul style="list-style-type: none"> — Viaduct — Embankment — Cut <p>Limits of Disturbance</p> <ul style="list-style-type: none"> Segment 1 Segment 2A Segment 2B Segment 3A Segment 3B Segment 3C Segment 4 Segment 5 <p>Structures</p> <ul style="list-style-type: none"> Agriculture Barn / Shed Commercial Commercial within LOD Community Facility Community Facility within LOD Cultural Resources Oil / Gas Residential Residential within LOD Transportation Unknown Structure Utility 	<p>Jurisdictional Boundaries</p> <ul style="list-style-type: none"> County Boundary City Boundary USACE Bardwell Lake Fort Boggy SP <p>Land Use</p> <ul style="list-style-type: none"> Agriculture Civic Commercial Forested Area Industrial Park Residential Rural Transportation Unclassified Utility Vacant Water Feature
--	---

*Inaccuracies in the original county appraisal district property data may result in misalignment with aerial imagery.
*Only structures within 200 feet of the LOD were evaluated for analysis purposes. Land use is only displayed within a quarter mile of the LOD.
Data Sources: County/City Boundaries - TxDOT 2013; Land Use - Respective County Appraisal Districts (2011, 2015, 2016), CLS (2017)
Aerial Imagery: USDA NAIP 2014



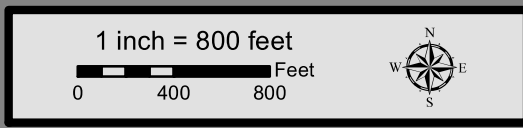


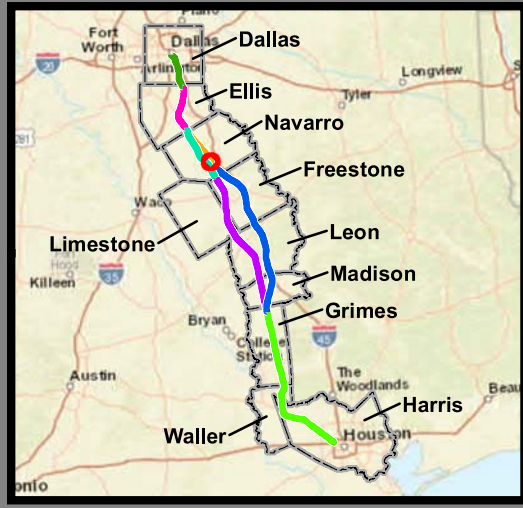
**Dallas to Houston
High-Speed Rail Project
Land Use
Segment 3B
Sheet 73 of 257**

Legend

Track Configuration	Jurisdictional Boundaries
— Viaduct	▭ County Boundary
— Embankment	▭ City Boundary
— Cut	▭ USACE Bardwell Lake
Limits of Disturbance	▭ Fort Boggy SP
▭ Segment 1	Land Use
▭ Segment 2A	▭ Agriculture
▭ Segment 2B	▭ Civic
▭ Segment 3A	▭ Commercial
▭ Segment 3B	▭ Forested Area
▭ Segment 3C	▭ Industrial
▭ Segment 4	▭ Park
▭ Segment 5	▭ Residential
Structures	▭ Rural
◆ Agriculture	▭ Transportation
▲ Barn / Shed	▭ Unclassified
■ Commercial	▭ Utility
■ Commercial within LOD	▭ Vacant
◆ Community Facility	▭ Water Feature
◆ Community Facility within LOD	
✿ Cultural Resources	
● Oil / Gas	
■ Residential	
■ Residential within LOD	
⊗ Transportation	
○ Unknown Structure	
⊕ Utility	

*Inaccuracies in the original county appraisal district property data may result in misalignment with aerial imagery.
 *Only structures within 200 feet of the LOD were evaluated for analysis purposes. Land use is only displayed within a quarter mile of the LOD.
Data Sources: County/City Boundaries - TxDOT 2013; Land Use - Respective County Appraisal Districts (2011, 2015, 2016), CLS (2017)
Aerial Imagery: USDA NAIP 2014





**Dallas to Houston
High-Speed Rail Project
Land Use
Segment 3B
Sheet 74 of 257**

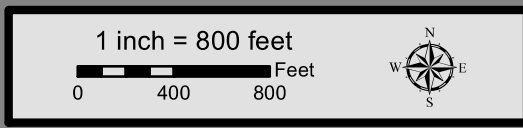
Legend

<p>Track Configuration</p> <ul style="list-style-type: none"> — Viaduct — Embankment — Cut <p>Limits of Disturbance</p> <ul style="list-style-type: none"> Segment 1 Segment 2A Segment 2B Segment 3A Segment 3B Segment 3C Segment 4 Segment 5 <p>Structures</p> <ul style="list-style-type: none"> Agriculture Barn / Shed Commercial Commercial within LOD Community Facility Community Facility within LOD Cultural Resources Oil / Gas Residential Residential within LOD Transportation Unknown Structure Utility 	<p>Jurisdictional Boundaries</p> <ul style="list-style-type: none"> County Boundary City Boundary USACE Bardwell Lake Fort Boggy SP <p>Land Use</p> <ul style="list-style-type: none"> Agriculture Civic Commercial Forested Area Industrial Park Residential Rural Transportation Unclassified Utility Vacant Water Feature
--	---

This Sheet only depicts Segment 3B; Segment 3C is also located in this same area and can be referenced on Sheet 93.

*Inaccuracies in the original county appraisal district property data may result in misalignment with aerial imagery.
*Only structures within 200 feet of the LOD were evaluated for analysis purposes. Land use is only displayed within a quarter mile of the LOD.

Data Sources: County/City Boundaries - TxDOT 2013; Land Use - Respective County Appraisal Districts (2011, 2015, 2016), CLS (2017)
Aerial Imagery: USDA NAIP 2014





**Dallas to Houston
High-Speed Rail Project
Land Use
Segment 3B
Sheet 75 of 257**

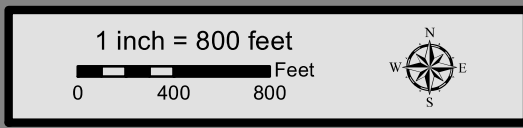
Legend

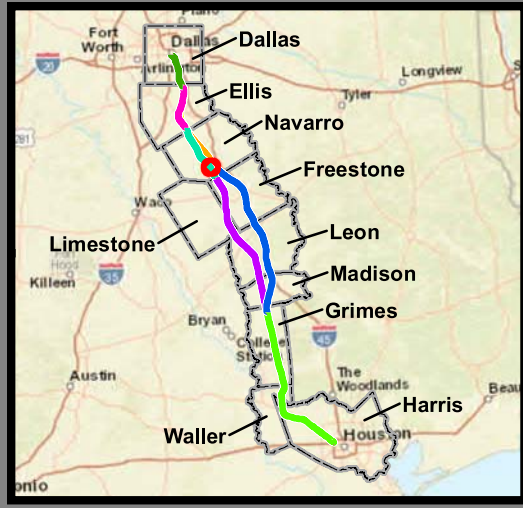
Track Configuration	Jurisdictional Boundaries
— Viaduct	▭ County Boundary
— Embankment	▭ City Boundary
— Cut	▭ USACE Bardwell Lake
Limits of Disturbance	▭ Fort Boggy SP
▭ Segment 1	Land Use
▭ Segment 2A	▭ Agriculture
▭ Segment 2B	▭ Civic
▭ Segment 3A	▭ Commercial
▭ Segment 3B	▭ Forested Area
▭ Segment 3C	▭ Industrial
▭ Segment 4	▭ Park
▭ Segment 5	▭ Residential
Structures	▭ Rural
◆ Agriculture	▭ Transportation
▲ Barn / Shed	▭ Unclassified
■ Commercial	▭ Utility
■ Commercial within LOD	▭ Vacant
◆ Community Facility	▭ Water Feature
◆ Community Facility within LOD	
☀ Cultural Resources	
● Oil / Gas	
■ Residential	
■ Residential within LOD	
⊗ Transportation	
○ Unknown Structure	
⊕ Utility	

This Sheet only depicts Segment 3B; Segments 3A & 3C are also located in this same area and can be referenced on Sheets 56 & 94.

*Inaccuracies in the original county appraisal district property data may result in misalignment with aerial imagery.
*Only structures within 200 feet of the LOD were evaluated for analysis purposes. Land use is only displayed within a quarter mile of the LOD.

Data Sources: County/City Boundaries - TxDOT 2013; Land Use - Respective County Appraisal Districts (2011, 2015, 2016), CLS (2017)
Aerial Imagery: USDA NAIP 2014





**Dallas to Houston
High-Speed Rail Project
Land Use
Segment 3B
Sheet 76 of 257**

Legend

Track Configuration	Jurisdictional Boundaries
— Viaduct	▭ County Boundary
▬ Embankment	▭ City Boundary
▭ Cut	▭ USACE Bardwell Lake
Limits of Disturbance	▭ Fort Boggy SP
▭ Segment 1	Land Use
▭ Segment 2A	▭ Agriculture
▭ Segment 2B	▭ Civic
▭ Segment 3A	▭ Commercial
▭ Segment 3B	▭ Forested Area
▭ Segment 3C	▭ Industrial
▭ Segment 4	▭ Park
▭ Segment 5	▭ Residential
Structures	▭ Rural
◆ Agriculture	▭ Transportation
▲ Barn / Shed	▭ Unclassified
■ Commercial	▭ Utility
■ Commercial within LOD	▭ Vacant
◆ Community Facility	▭ Water Feature
◆ Community Facility within LOD	
✱ Cultural Resources	
● Oil / Gas	
■ Residential	
■ Residential within LOD	
⊗ Transportation	
○ Unknown Structure	
⊕ Utility	

This Sheet only depicts Segment 3B; Segments 3A & 3C are also located in this same area and can be referenced on Sheets 57 & 95.

*Inaccuracies in the original county appraisal district property data may result in misalignment with aerial imagery.
*Only structures within 200 feet of the LOD were evaluated for analysis purposes. Land use is only displayed within a quarter mile of the LOD.

Data Sources: County/City Boundaries - TxDOT 2013; Land Use - Respective County Appraisal Districts (2011, 2015, 2016), CLS (2017)
Aerial Imagery: USDA NAIP 2014





**Dallas to Houston
High-Speed Rail Project
Land Use
Segment 3B
Sheet 77 of 257**

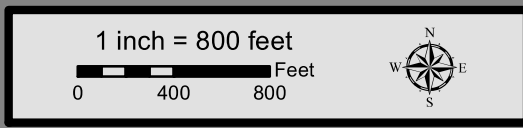
Legend

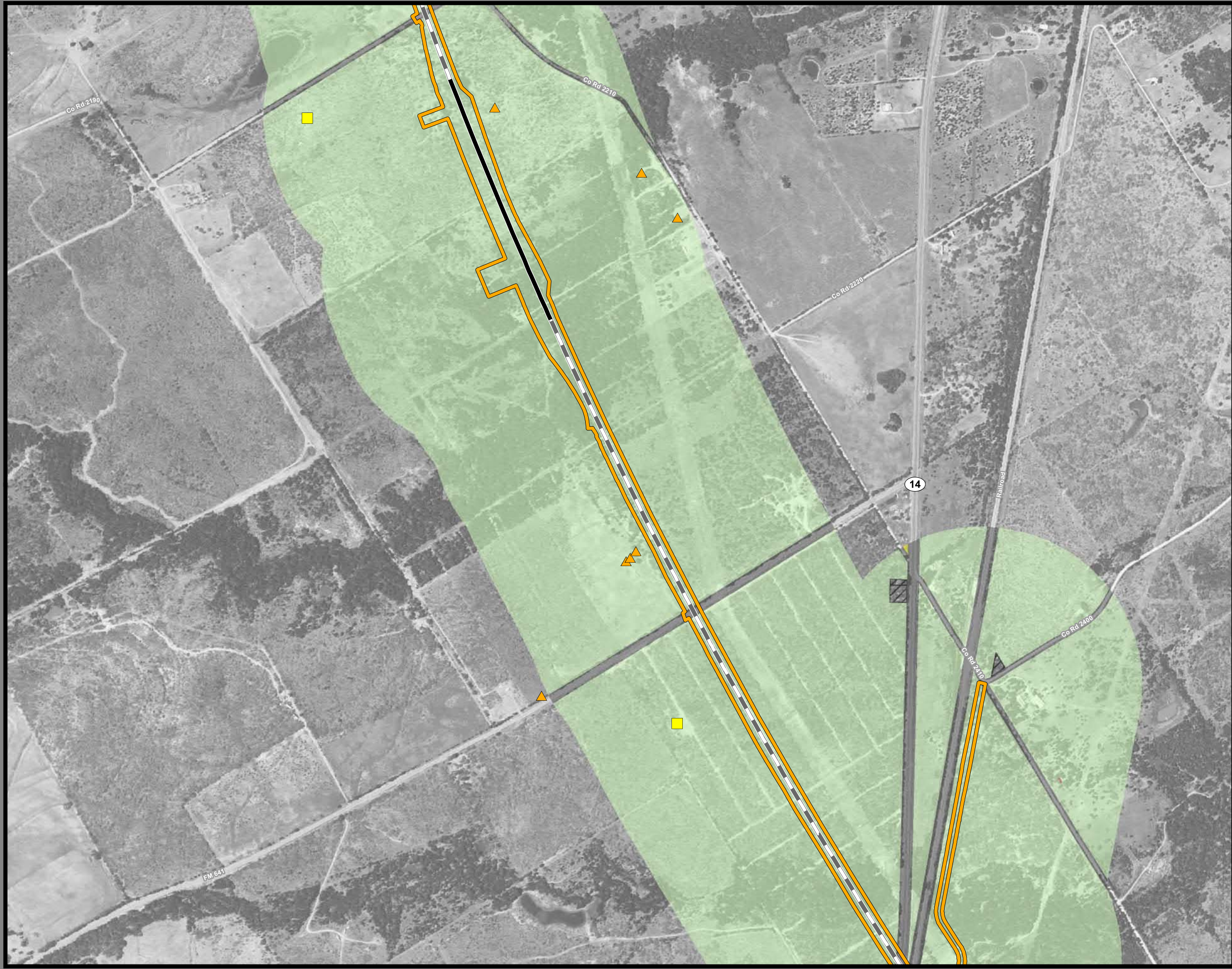
<p>Track Configuration</p> <ul style="list-style-type: none"> — Viaduct — Embankment — Cut <p>Limits of Disturbance</p> <ul style="list-style-type: none"> Segment 1 Segment 2A Segment 2B Segment 3A Segment 3B Segment 3C Segment 4 Segment 5 <p>Structures</p> <ul style="list-style-type: none"> Agriculture Barn / Shed Commercial Commercial within LOD Community Facility Community Facility within LOD Cultural Resources Oil / Gas Residential Residential within LOD Transportation Unknown Structure Utility 	<p>Jurisdictional Boundaries</p> <ul style="list-style-type: none"> County Boundary City Boundary USACE Bardwell Lake Fort Boggy SP <p>Land Use</p> <ul style="list-style-type: none"> Agriculture Civic Commercial Forested Area Industrial Park Residential Rural Transportation Unclassified Utility Vacant Water Feature
--	---

This Sheet only depicts Segment 3B; Segment 3A is also located in this same area and can be referenced on Sheet 58.

*Inaccuracies in the original county appraisal district property data may result in misalignment with aerial imagery.
*Only structures within 200 feet of the LOD were evaluated for analysis purposes. Land use is only displayed within a quarter mile of the LOD.

Data Sources: County/City Boundaries - TxDOT 2013; Land Use - Respective County Appraisal Districts (2011, 2015, 2016), CLS (2017)
Aerial Imagery: USDA NAIP 2014





**Dallas to Houston
High-Speed Rail Project
Land Use
Segment 3B
Sheet 78 of 257**

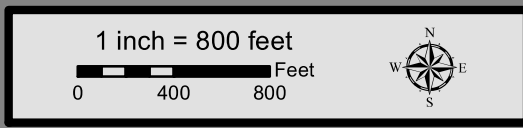
Legend

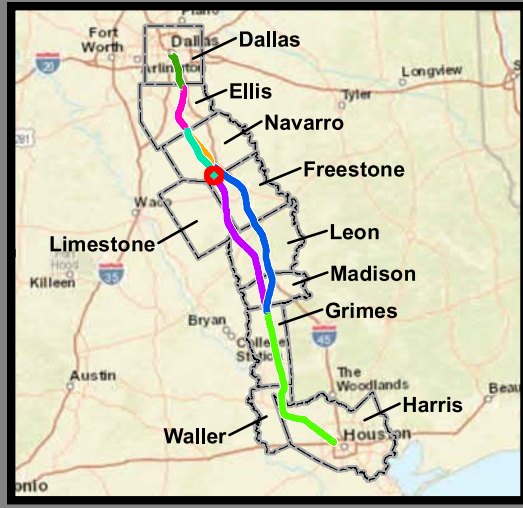
Track Configuration	Jurisdictional Boundaries
— Viaduct	▭ County Boundary
— Embankment	▭ City Boundary
— Cut	▭ USACE Bardwell Lake
Limits of Disturbance	▭ Fort Boggy SP
▭ Segment 1	Land Use
▭ Segment 2A	▭ Agriculture
▭ Segment 2B	▭ Civic
▭ Segment 3A	▭ Commercial
▭ Segment 3B	▭ Forested Area
▭ Segment 3C	▭ Industrial
▭ Segment 4	▭ Park
▭ Segment 5	▭ Residential
Structures	▭ Rural
◆ Agriculture	▭ Transportation
▲ Barn / Shed	▭ Unclassified
■ Commercial	▭ Utility
■ Commercial within LOD	▭ Vacant
◆ Community Facility	▭ Water Feature
◆ Community Facility within LOD	
✱ Cultural Resources	
● Oil / Gas	
■ Residential	
■ Residential within LOD	
⊗ Transportation	
○ Unknown Structure	
⊕ Utility	

This Sheet only depicts Segment 3B; Segment 3A is also located in this same area and can be referenced on Sheet 59.

*Inaccuracies in the original county appraisal district property data may result in misalignment with aerial imagery.
*Only structures within 200 feet of the LOD were evaluated for analysis purposes. Land use is only displayed within a quarter mile of the LOD.

Data Sources: County/City Boundaries - TxDOT 2013; Land Use - Respective County Appraisal Districts (2011, 2015, 2016), CLS (2017)
Aerial Imagery: USDA NAIP 2014





**Dallas to Houston
High-Speed Rail Project
Land Use
Segment 3B
Sheet 79 of 257**

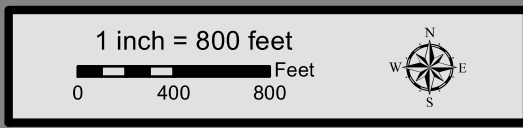
Legend

Track Configuration	Jurisdictional Boundaries
— Viaduct	▭ County Boundary
— Embankment	▭ City Boundary
— Cut	▭ USACE Bardwell Lake
Limits of Disturbance	▭ Fort Bogy SP
▭ Segment 1	Land Use
▭ Segment 2A	▭ Agriculture
▭ Segment 2B	▭ Civic
▭ Segment 3A	▭ Commercial
▭ Segment 3B	▭ Forested Area
▭ Segment 3C	▭ Industrial
▭ Segment 4	▭ Park
▭ Segment 5	▭ Residential
Structures	▭ Rural
◆ Agriculture	▭ Transportation
▲ Barn / Shed	▭ Unclassified
■ Commercial	▭ Utility
■ Commercial within LOD	▭ Vacant
◆ Community Facility	▭ Water Feature
◆ Community Facility within LOD	
✱ Cultural Resources	
● Oil / Gas	
■ Residential	
■ Residential within LOD	
⊗ Transportation	
○ Unknown Structure	
⊕ Utility	

This Sheet only depicts Segment 3B; Segment 3A is also located in this same area and can be referenced on Sheet 60.

*Inaccuracies in the original county appraisal district property data may result in misalignment with aerial imagery.
*Only structures within 200 feet of the LOD were evaluated for analysis purposes. Land use is only displayed within a quarter mile of the LOD.

Data Sources: County/City Boundaries - TxDOT 2013; Land Use - Respective County Appraisal Districts (2011, 2015, 2016), CLS (2017)
Aerial Imagery: USDA NAIP 2014





**Dallas to Houston
High-Speed Rail Project
Land Use
Segment 3B, 4
Sheet 80 of 257**

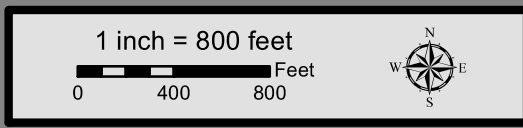
Legend

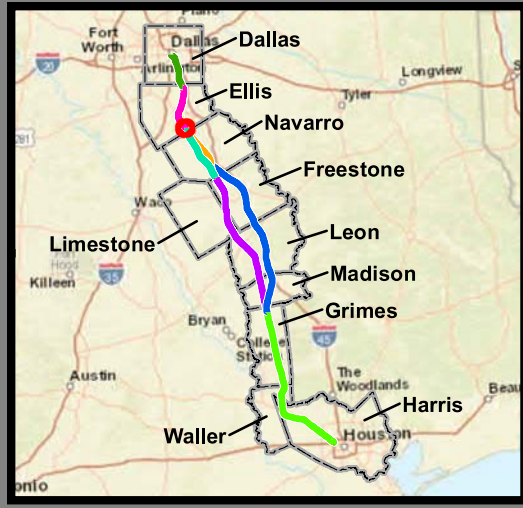
<p>Track Configuration</p> <ul style="list-style-type: none"> — Viaduct — Embankment — Cut <p>Limits of Disturbance</p> <ul style="list-style-type: none"> — Segment 1 — Segment 2A — Segment 2B — Segment 3A — Segment 3B — Segment 3C — Segment 4 — Segment 5 <p>Structures</p> <ul style="list-style-type: none"> ◆ Agriculture ▲ Barn / Shed ■ Commercial ■ Commercial within LOD ◆ Community Facility ◆ Community Facility within LOD ✱ Cultural Resources ● Oil / Gas ■ Residential ■ Residential within LOD ⊗ Transportation ○ Unknown Structure ⊕ Utility 	<p>Jurisdictional Boundaries</p> <ul style="list-style-type: none"> — County Boundary — City Boundary — USACE Bardwell Lake — Fort Boggy SP <p>Land Use</p> <ul style="list-style-type: none"> — Agriculture — Civic — Commercial — Forested Area — Industrial — Park — Residential — Rural — Transportation — Unclassified — Utility — Vacant — Water Feature
--	---

This Sheet only depicts Segments 3B & 4; Segment 3A is also located in this same area and can be referenced on Sheet 61.

*Inaccuracies in the original county appraisal district property data may result in misalignment with aerial imagery.
 *Only structures within 200 feet of the LOD were evaluated for analysis purposes. Land use is only displayed within a quarter mile of the LOD.

Data Sources: County/City Boundaries - TxDOT 2013; Land Use - Respective County Appraisal Districts (2011, 2015, 2016), CLS (2017)
Aerial Imagery: USDA NAIP 2014





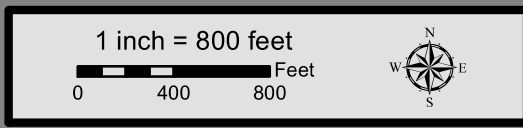
**Dallas to Houston
High-Speed Rail Project
Land Use
Segment 2B, 3C
Sheet 81 of 257**

Legend	
Track Configuration	Jurisdictional Boundaries
— Viaduct	▭ County Boundary
— Embankment	▭ City Boundary
— Cut	▭ USACE Bardwell Lake
Limits of Disturbance	▭ Fort Boggy SP
▭ Segment 1	Land Use
▭ Segment 2A	▭ Agriculture
▭ Segment 2B	▭ Civic
▭ Segment 3A	▭ Commercial
▭ Segment 3B	▭ Forested Area
▭ Segment 3C	▭ Industrial
▭ Segment 4	▭ Park
▭ Segment 5	▭ Residential
Structures	▭ Rural
◆ Agriculture	▭ Transportation
▲ Barn / Shed	▭ Unclassified
■ Commercial	▭ Utility
■ Commercial within LOD	▭ Vacant
◆ Community Facility	▭ Water Feature
◆ Community Facility within LOD	
✱ Cultural Resources	
● Oil / Gas	
■ Residential	
■ Residential within LOD	
⊗ Transportation	
○ Unknown Structure	
⊕ Utility	

This Sheet only depicts Segments 2B & 3C; Segments 2A, 3A & 3B are also located in this same area and can be referenced on Sheets 27, 44 & 63.

*Inaccuracies in the original county appraisal district property data may result in misalignment with aerial imagery.
*Only structures within 200 feet of the LOD were evaluated for analysis purposes. Land use is only displayed within a quarter mile of the LOD.

Data Sources: County/City Boundaries - TxDOT 2013; Land Use - Respective County Appraisal Districts (2011, 2015, 2016), CLS (2017)
Aerial Imagery: USDA NAIP 2014





**Dallas to Houston
High-Speed Rail Project
Land Use
Segment 3C
Sheet 82 of 257**

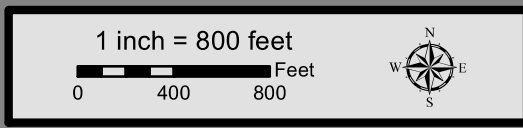
Legend

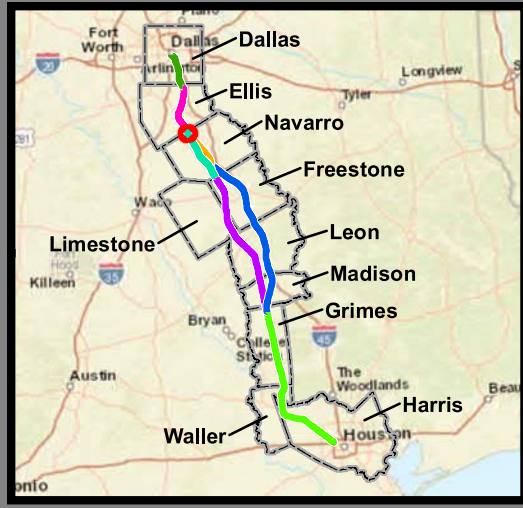
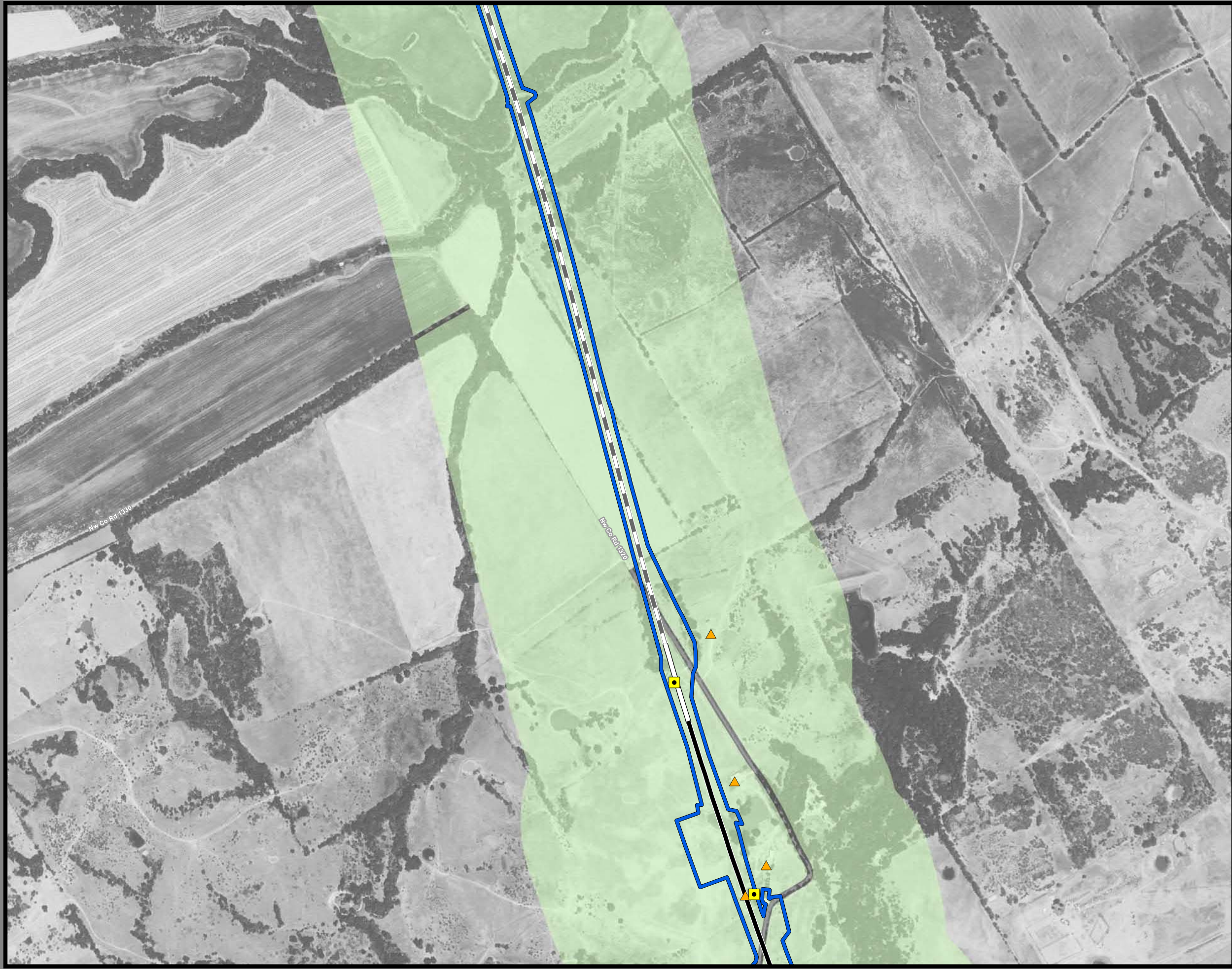
Track Configuration	Jurisdictional Boundaries
— Viaduct	▭ County Boundary
▬ Embankment	▭ City Boundary
▬ Cut	▭ USACE Bardwell Lake
Limits of Disturbance	▭ Fort Boggy SP
▭ Segment 1	Land Use
▭ Segment 2A	▭ Agriculture
▭ Segment 2B	▭ Civic
▭ Segment 3A	▭ Commercial
▭ Segment 3B	▭ Forested Area
▭ Segment 3C	▭ Industrial
▭ Segment 4	▭ Park
▭ Segment 5	▭ Residential
Structures	▭ Rural
◆ Agriculture	▭ Transportation
▲ Barn / Shed	▭ Unclassified
▭ Commercial	▭ Utility
▭ Commercial within LOD	▭ Vacant
▭ Community Facility	▭ Water Feature
▭ Community Facility within LOD	
☀ Cultural Resources	
● Oil / Gas	
▭ Residential	
▭ Residential within LOD	
⊗ Transportation	
○ Unknown Structure	
⊕ Utility	

This Sheet only depicts Segment 3C; Segments 3A & 3B are also located in this same area and can be referenced on Sheets 44 & 63.

*Inaccuracies in the original county appraisal district property data may result in misalignment with aerial imagery.
*Only structures within 200 feet of the LOD were evaluated for analysis purposes. Land use is only displayed within a quarter mile of the LOD.

Data Sources: County/City Boundaries - TxDOT 2013; Land Use - Respective County Appraisal Districts (2011, 2015, 2016), CLS (2017)
Aerial Imagery: USDA NAIP 2014





**Dallas to Houston
High-Speed Rail Project
Land Use
Segment 3C
Sheet 83 of 257**

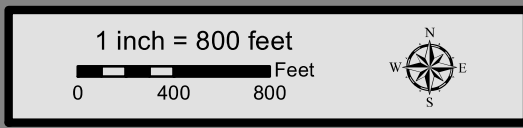
Legend

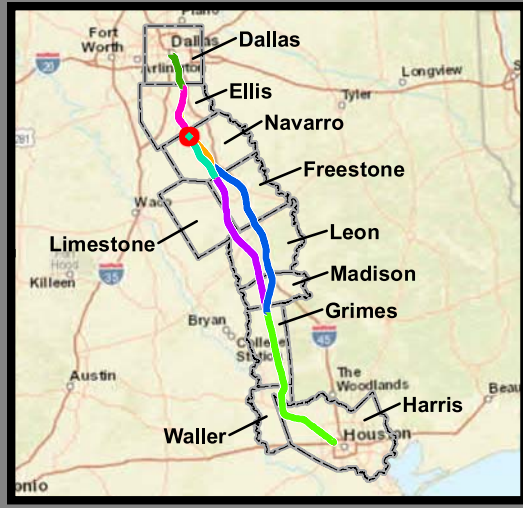
Track Configuration	Jurisdictional Boundaries
— Viaduct	▭ County Boundary
— Embankment	▭ City Boundary
— Cut	▭ USACE Bardwell Lake
Limits of Disturbance	▭ Fort Boggy SP
▭ Segment 1	Land Use
▭ Segment 2A	▭ Agriculture
▭ Segment 2B	▭ Civic
▭ Segment 3A	▭ Commercial
▭ Segment 3B	▭ Forested Area
▭ Segment 3C	▭ Industrial
▭ Segment 4	▭ Park
▭ Segment 5	▭ Residential
Structures	▭ Rural
◆ Agriculture	▭ Transportation
▲ Barn / Shed	▭ Unclassified
■ Commercial	▭ Utility
■ Commercial within LOD	▭ Vacant
◆ Community Facility	▭ Water Feature
◆ Community Facility within LOD	
☀ Cultural Resources	
● Oil / Gas	
■ Residential	
■ Residential within LOD	
⊗ Transportation	
○ Unknown Structure	
⊕ Utility	

*****This Sheet only depicts Segment 3C; Segments 3A & 3B are also located in this same area and can be referenced on Sheets 45 & 64.*****

*Inaccuracies in the original county appraisal district property data may result in misalignment with aerial imagery.
*Only structures within 200 feet of the LOD were evaluated for analysis purposes. Land use is only displayed within a quarter mile of the LOD.

Data Sources: County/City Boundaries - TxDOT 2013; Land Use - Respective County Appraisal Districts (2011, 2015, 2016), CLS (2017)
Aerial Imagery: USDA NAIP 2014





**Dallas to Houston
High-Speed Rail Project
Land Use
Segment 3C
Sheet 84 of 257**

Legend

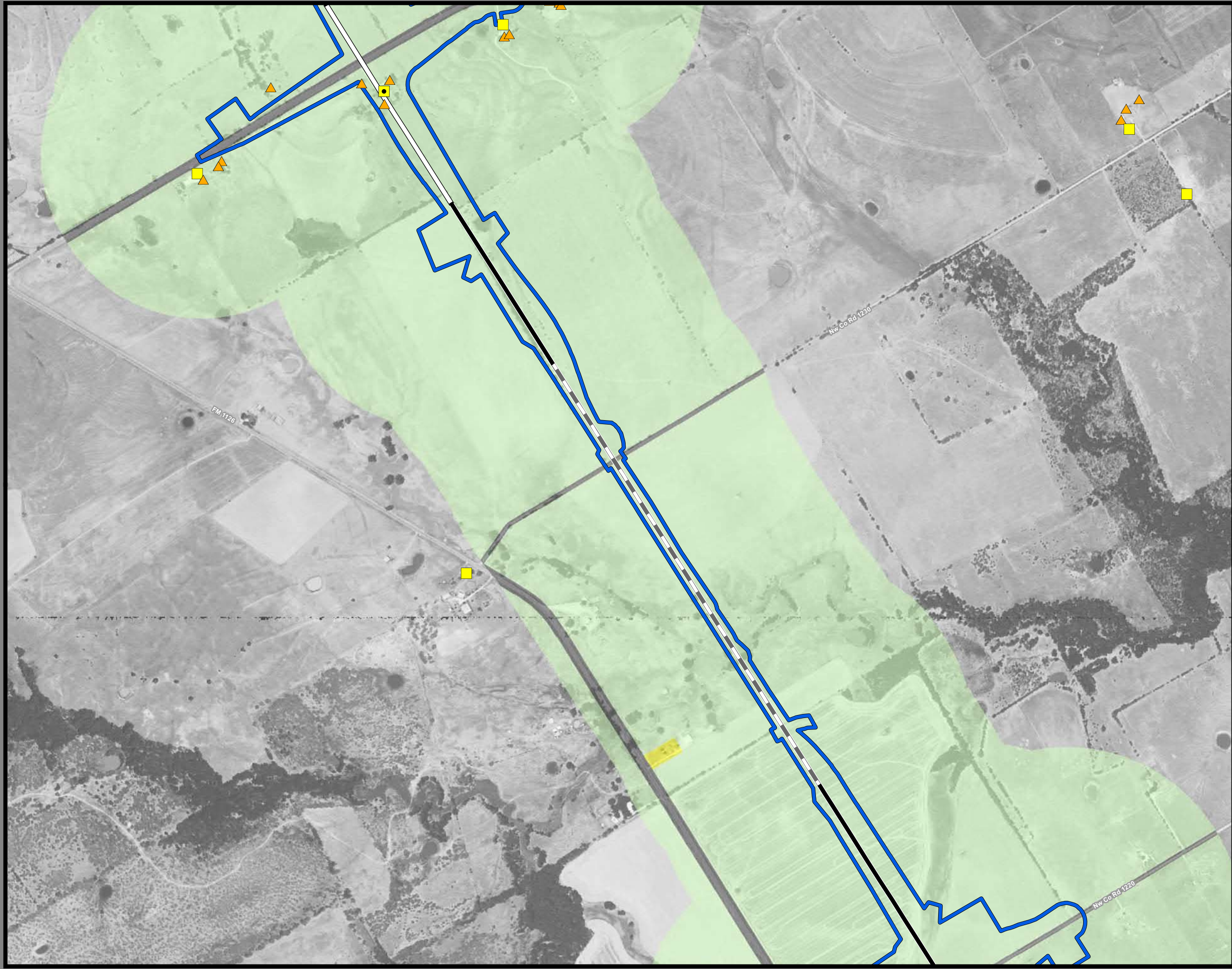
Track Configuration	Jurisdictional Boundaries
— Viaduct	▭ County Boundary
— Embankment	▭ City Boundary
— Cut	▭ USACE Bardwell Lake
Limits of Disturbance	▭ Fort Boggy SP
▭ Segment 1	Land Use
▭ Segment 2A	▭ Agriculture
▭ Segment 2B	▭ Civic
▭ Segment 3A	▭ Commercial
▭ Segment 3B	▭ Forested Area
▭ Segment 3C	▭ Industrial
▭ Segment 4	▭ Park
▭ Segment 5	▭ Residential
Structures	▭ Rural
◆ Agriculture	▭ Transportation
▲ Barn / Shed	▭ Unclassified
■ Commercial	▭ Utility
■ Commercial within LOD	▭ Vacant
◆ Community Facility	▭ Water Feature
◆ Community Facility within LOD	
✱ Cultural Resources	
● Oil / Gas	
■ Residential	
■ Residential within LOD	
⊗ Transportation	
○ Unknown Structure	
⊕ Utility	

This Sheet only depicts Segment 3C; Segments 3A & 3B are also located in this same area and can be referenced on Sheets 46 & 65.

*Inaccuracies in the original county appraisal district property data may result in misalignment with aerial imagery.
*Only structures within 200 feet of the LOD were evaluated for analysis purposes. Land use is only displayed within a quarter mile of the LOD.

Data Sources: County/City Boundaries - TxDOT 2013; Land Use - Respective County Appraisal Districts (2011, 2015, 2016), CLS (2017)
Aerial Imagery: USDA NAIP 2014





**Dallas to Houston
High-Speed Rail Project
Land Use
Segment 3C
Sheet 85 of 257**

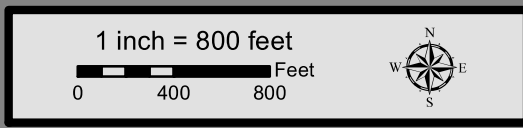
Legend

Track Configuration	Jurisdictional Boundaries
— Viaduct	▭ County Boundary
— Embankment	▭ City Boundary
— Cut	▭ USACE Bardwell Lake
Limits of Disturbance	▭ Fort Boggy SP
▭ Segment 1	Land Use
▭ Segment 2A	▭ Agriculture
▭ Segment 2B	▭ Civic
▭ Segment 3A	▭ Commercial
▭ Segment 3B	▭ Forested Area
▭ Segment 3C	▭ Industrial
▭ Segment 4	▭ Park
▭ Segment 5	▭ Residential
Structures	▭ Rural
◆ Agriculture	▭ Transportation
▲ Barn / Shed	▭ Unclassified
■ Commercial	▭ Utility
■ Commercial within LOD	▭ Vacant
◆ Community Facility	▭ Water Feature
◆ Community Facility within LOD	
✱ Cultural Resources	
● Oil / Gas	
■ Residential	
■ Residential within LOD	
⊗ Transportation	
○ Unknown Structure	
⊕ Utility	

*****This Sheet only depicts Segment 3C; Segments 3A & 3B are also located in this same area and can be referenced on Sheets 47 & 66.*****

*Inaccuracies in the original county appraisal district property data may result in misalignment with aerial imagery.
*Only structures within 200 feet of the LOD were evaluated for analysis purposes. Land use is only displayed within a quarter mile of the LOD.

Data Sources: County/City Boundaries - TxDOT 2013; Land Use - Respective County Appraisal Districts (2011, 2015, 2016), CLS (2017)
Aerial Imagery: USDA NAIP 2014





**Dallas to Houston
High-Speed Rail Project
Land Use
Segment 3C
Sheet 86 of 257**

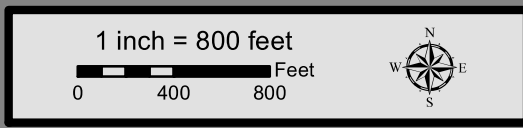
Legend

<p>Track Configuration</p> <ul style="list-style-type: none"> — Viaduct — Embankment — Cut <p>Limits of Disturbance</p> <ul style="list-style-type: none"> — Segment 1 — Segment 2A — Segment 2B — Segment 3A — Segment 3B — Segment 3C — Segment 4 — Segment 5 <p>Structures</p> <ul style="list-style-type: none"> ◆ Agriculture ▲ Barn / Shed ■ Commercial ■ Commercial within LOD ◆ Community Facility ◆ Community Facility within LOD ☀ Cultural Resources ● Oil / Gas ■ Residential ■ Residential within LOD ⊗ Transportation ○ Unknown Structure ⊕ Utility 	<p>Jurisdictional Boundaries</p> <ul style="list-style-type: none"> — County Boundary — City Boundary — USACE Bardwell Lake — Fort Boggy SP <p>Land Use</p> <ul style="list-style-type: none"> — Agriculture — Civic — Commercial — Forested Area — Industrial — Park — Residential — Rural — Transportation — Unclassified — Utility — Vacant — Water Feature
--	---

This Sheet only depicts Segment 3C; Segment 3A is also located in this same area and can be referenced on Sheet 48.

*Inaccuracies in the original county appraisal district property data may result in misalignment with aerial imagery.
*Only structures within 200 feet of the LOD were evaluated for analysis purposes. Land use is only displayed within a quarter mile of the LOD.

Data Sources: County/City Boundaries - TxDOT 2013; Land Use - Respective County Appraisal Districts (2011, 2015, 2016), CLS (2017)
Aerial Imagery: USDA NAIP 2014





**Dallas to Houston
High-Speed Rail Project
Land Use
Segment 3C
Sheet 87 of 257**

Legend

Track Configuration	Jurisdictional Boundaries
— Viaduct	▭ County Boundary
— Embankment	▭ City Boundary
— Cut	▭ USACE Bardwell Lake
Limits of Disturbance	▭ Fort Boggy SP
▭ Segment 1	Land Use
▭ Segment 2A	▭ Agriculture
▭ Segment 2B	▭ Civic
▭ Segment 3A	▭ Commercial
▭ Segment 3B	▭ Forested Area
▭ Segment 3C	▭ Industrial
▭ Segment 4	▭ Park
▭ Segment 5	▭ Residential
Structures	▭ Rural
◆ Agriculture	▭ Transportation
▲ Barn / Shed	▭ Unclassified
■ Commercial	▭ Utility
■ Commercial within LOD	▭ Vacant
◆ Community Facility	▭ Water Feature
◆ Community Facility within LOD	
✳ Cultural Resources	
● Oil / Gas	
■ Residential	
■ Residential within LOD	
⊗ Transportation	
○ Unknown Structure	
⊕ Utility	

This Sheet only depicts Segment 3C; Segment 3A is also located in this same area and can be referenced on Sheet 49.

*Inaccuracies in the original county appraisal district property data may result in misalignment with aerial imagery.
*Only structures within 200 feet of the LOD were evaluated for analysis purposes. Land use is only displayed within a quarter mile of the LOD.

Data Sources: County/City Boundaries - TxDOT 2013; Land Use - Respective County Appraisal Districts (2011, 2015, 2016), CLS (2017)
Aerial Imagery: USDA NAIP 2014

