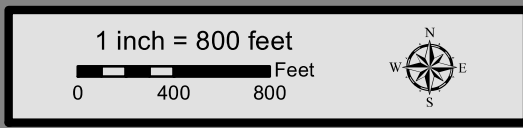


**Dallas to Houston
High-Speed Rail Project
Land Use
Segment 3C
Sheet 138 of 257**

Legend

Track Configuration	Jurisdictional Boundaries
— Viaduct	▭ County Boundary
— Embankment	▭ City Boundary
— Cut	▭ USACE Bardwell Lake
Limits of Disturbance	▭ Fort Boggy SP
▭ Segment 1	Land Use
▭ Segment 2A	▭ Agriculture
▭ Segment 2B	▭ Civic
▭ Segment 3A	▭ Commercial
▭ Segment 3B	▭ Forested Area
▭ Segment 3C	▭ Industrial
▭ Segment 4	▭ Park
▭ Segment 5	▭ Residential
Structures	▭ Rural
◆ Agriculture	▭ Transportation
▲ Barn / Shed	▭ Unclassified
■ Commercial	▭ Utility
■ Commercial within LOD	▭ Vacant
◆ Community Facility	▭ Water Feature
◆ Community Facility within LOD	
✪ Cultural Resources	
● Oil / Gas	
■ Residential	
■ Residential within LOD	
⊗ Transportation	
○ Unknown Structure	
⊕ Utility	

*Inaccuracies in the original county appraisal district property data may result in misalignment with aerial imagery.
 *Only structures within 200 feet of the LOD were evaluated for analysis purposes. Land use is only displayed within a quarter mile of the LOD.
Data Sources: County/City Boundaries - TxDOT 2013; Land Use - Respective County Appraisal Districts (2011, 2015, 2016), CLS (2017)
Aerial Imagery: USDA NAIP 2014





OSR

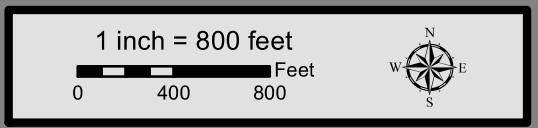


**Dallas to Houston
High-Speed Rail Project
Land Use
Segment 3C
Sheet 139 of 257**

Legend

<p>Track Configuration</p> <ul style="list-style-type: none"> — Viaduct — Embankment — Cut <p>Limits of Disturbance</p> <ul style="list-style-type: none"> — Segment 1 — Segment 2A — Segment 2B — Segment 3A — Segment 3B — Segment 3C — Segment 4 — Segment 5 <p>Structures</p> <ul style="list-style-type: none"> ◆ Agriculture ▲ Barn / Shed ■ Commercial ■ Commercial within LOD ◆ Community Facility ◆ Community Facility within LOD ✱ Cultural Resources ● Oil / Gas ■ Residential ■ Residential within LOD ⊗ Transportation ○ Unknown Structure ⊕ Utility 	<p>Jurisdictional Boundaries</p> <ul style="list-style-type: none"> — County Boundary — City Boundary — USACE Bardwell Lake — Fort Boggy SP <p>Land Use</p> <ul style="list-style-type: none"> — Agriculture — Civic — Commercial — Forested Area — Industrial — Park — Residential — Rural — Transportation — Unclassified — Utility — Vacant — Water Feature
--	---

*Inaccuracies in the original county appraisal district property data may result in misalignment with aerial imagery.
 *Only structures within 200 feet of the LOD were evaluated for analysis purposes. Land use is only displayed within a quarter mile of the LOD.
Data Sources: County/City Boundaries - TxDOT 2013; Land Use - Respective County Appraisal Districts (2011, 2015, 2016), CLS (2017)
Aerial Imagery: USDA NAIP 2014



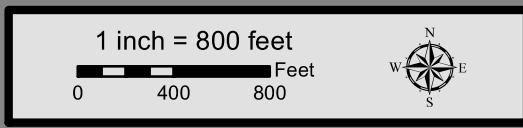


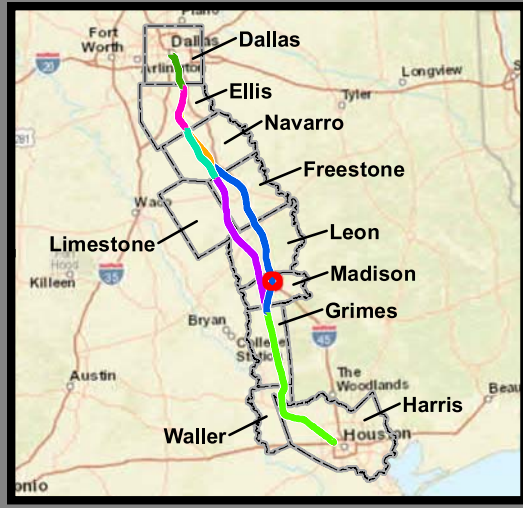
**Dallas to Houston
High-Speed Rail Project
Land Use
Segment 3C
Sheet 140 of 257**

Legend

Track Configuration	Jurisdictional Boundaries
— Viaduct	▭ County Boundary
— Embankment	▭ City Boundary
— Cut	▭ USACE Bardwell Lake
Limits of Disturbance	▭ Fort Boggy SP
▭ Segment 1	Land Use
▭ Segment 2A	▭ Agriculture
▭ Segment 2B	▭ Civic
▭ Segment 3A	▭ Commercial
▭ Segment 3B	▭ Forested Area
▭ Segment 3C	▭ Industrial
▭ Segment 4	▭ Park
▭ Segment 5	▭ Residential
Structures	▭ Rural
◆ Agriculture	▭ Transportation
▲ Barn / Shed	▭ Unclassified
■ Commercial	▭ Utility
■ Commercial within LOD	▭ Vacant
◆ Community Facility	▭ Water Feature
◆ Community Facility within LOD	
✱ Cultural Resources	
● Oil / Gas	
■ Residential	
■ Residential within LOD	
⊗ Transportation	
○ Unknown Structure	
⊕ Utility	

*Inaccuracies in the original county appraisal district property data may result in misalignment with aerial imagery.
 *Only structures within 200 feet of the LOD were evaluated for analysis purposes. Land use is only displayed within a quarter mile of the LOD.
Data Sources: County/City Boundaries - TxDOT 2013; Land Use - Respective County Appraisal Districts (2011, 2015, 2016), CLS (2017)
Aerial Imagery: USDA NAIP 2014



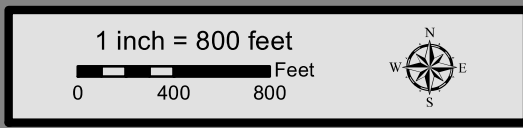


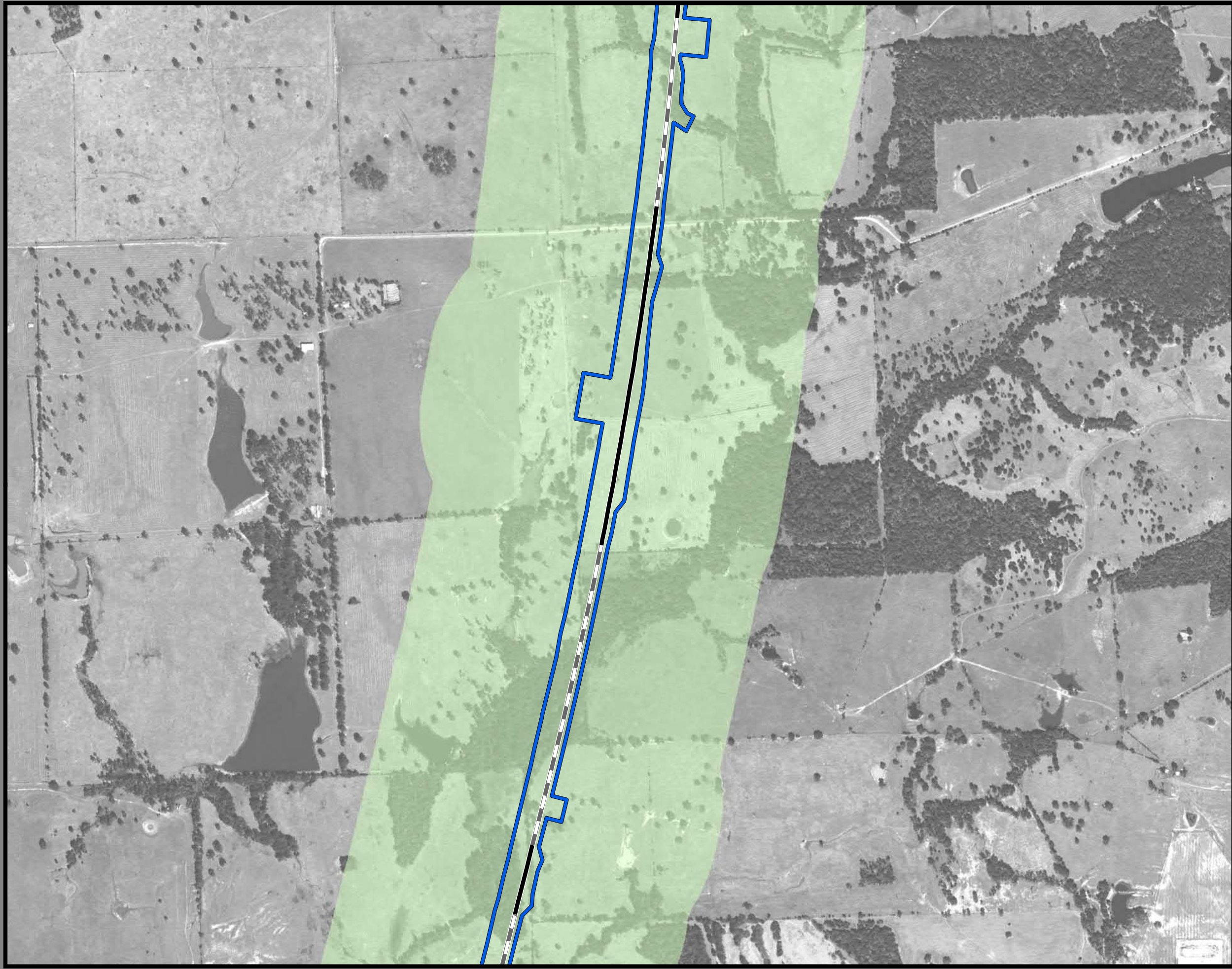
**Dallas to Houston
High-Speed Rail Project
Land Use
Segment 3C
Sheet 141 of 257**

Legend

Track Configuration	Jurisdictional Boundaries
— Viaduct	▭ County Boundary
▬ Embankment	▭ City Boundary
▭ Cut	▭ USACE Bardwell Lake
Limits of Disturbance	▭ Fort Boggy SP
▭ Segment 1	Land Use
▭ Segment 2A	▭ Agriculture
▭ Segment 2B	▭ Civic
▭ Segment 3A	▭ Commercial
▭ Segment 3B	▭ Forested Area
▭ Segment 3C	▭ Industrial
▭ Segment 4	▭ Park
▭ Segment 5	▭ Residential
Structures	▭ Rural
◆ Agriculture	▭ Transportation
▲ Barn / Shed	▭ Unclassified
▭ Commercial	▭ Utility
▭ Commercial within LOD	▭ Vacant
▭ Community Facility	▭ Water Feature
▭ Community Facility within LOD	
✱ Cultural Resources	
● Oil / Gas	
▭ Residential	
▭ Residential within LOD	
⊗ Transportation	
○ Unknown Structure	
⊕ Utility	

*Inaccuracies in the original county appraisal district property data may result in misalignment with aerial imagery.
*Only structures within 200 feet of the LOD were evaluated for analysis purposes. Land use is only displayed within a quarter mile of the LOD.
Data Sources: County/City Boundaries - TxDOT 2013; Land Use - Respective County Appraisal Districts (2011, 2015, 2016), CLS (2017)
Aerial Imagery: USDA NAIP 2014



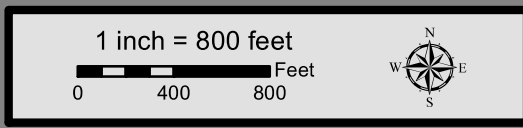


**Dallas to Houston
High-Speed Rail Project
Land Use
Segment 3C
Sheet 142 of 257**

Legend

Track Configuration	Jurisdictional Boundaries
— Viaduct	▬ County Boundary
▬ Embankment	▬ City Boundary
▬ Cut	▬ USACE Bardwell Lake
Limits of Disturbance	▬ Fort Boggy SP
▬ Segment 1	Land Use
▬ Segment 2A	▬ Agriculture
▬ Segment 2B	▬ Civic
▬ Segment 3A	▬ Commercial
▬ Segment 3B	▬ Forested Area
▬ Segment 3C	▬ Industrial
▬ Segment 4	▬ Park
▬ Segment 5	▬ Residential
Structures	▬ Rural
◆ Agriculture	▬ Transportation
▲ Barn / Shed	▬ Unclassified
■ Commercial	▬ Utility
■ Commercial within LOD	▬ Vacant
◆ Community Facility	▬ Water Feature
◆ Community Facility within LOD	
✱ Cultural Resources	
● Oil / Gas	
■ Residential	
■ Residential within LOD	
⊗ Transportation	
○ Unknown Structure	
⊕ Utility	

*Inaccuracies in the original county appraisal district property data may result in misalignment with aerial imagery.
*Only structures within 200 feet of the LOD were evaluated for analysis purposes. Land use is only displayed within a quarter mile of the LOD.
Data Sources: County/City Boundaries - TxDOT 2013; Land Use - Respective County Appraisal Districts (2011, 2015, 2016), CLS (2017)
Aerial Imagery: USDA NAIP 2014



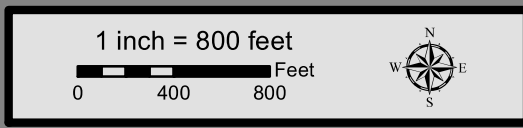


**Dallas to Houston
High-Speed Rail Project
Land Use
Segment 3C
Sheet 143 of 257**

Legend

<p>Track Configuration</p> <ul style="list-style-type: none"> — Viaduct — Embankment — Cut <p>Limits of Disturbance</p> <ul style="list-style-type: none"> Segment 1 Segment 2A Segment 2B Segment 3A Segment 3B Segment 3C Segment 4 Segment 5 <p>Structures</p> <ul style="list-style-type: none"> Agriculture Barn / Shed Commercial Commercial within LOD Community Facility Community Facility within LOD Cultural Resources Oil / Gas Residential Residential within LOD Transportation Unknown Structure Utility 	<p>Jurisdictional Boundaries</p> <ul style="list-style-type: none"> County Boundary City Boundary USACE Bardwell Lake Fort Boggy SP <p>Land Use</p> <ul style="list-style-type: none"> Agriculture Civic Commercial Forested Area Industrial Park Residential Rural Transportation Unclassified Utility Vacant Water Feature
--	---

*Inaccuracies in the original county appraisal district property data may result in misalignment with aerial imagery.
*Only structures within 200 feet of the LOD were evaluated for analysis purposes. Land use is only displayed within a quarter mile of the LOD.
Data Sources: County/City Boundaries - TxDOT 2013; Land Use - Respective County Appraisal Districts (2011, 2015, 2016), CLS (2017)
Aerial Imagery: USDA NAIP 2014



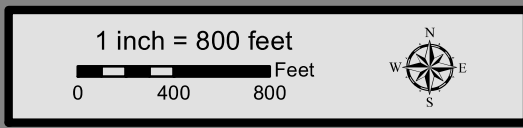


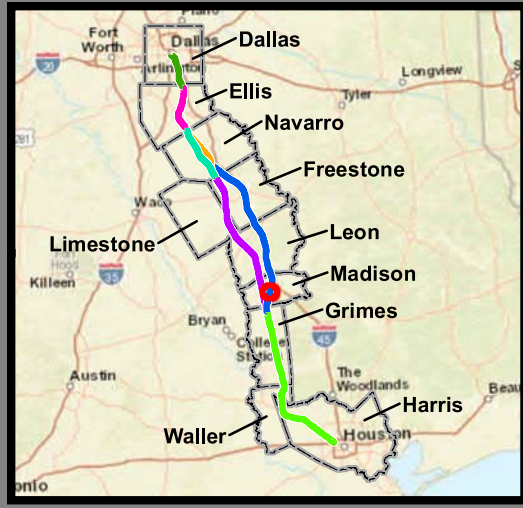
**Dallas to Houston
High-Speed Rail Project
Land Use
Segment 3C
Sheet 144 of 257**

Legend

Track Configuration	Jurisdictional Boundaries
— Viaduct	▭ County Boundary
▬ Embankment	▭ City Boundary
▬ Cut	▭ USACE Bardwell Lake
Limits of Disturbance	▭ Fort Boggy SP
▭ Segment 1	Land Use
▭ Segment 2A	▭ Agriculture
▭ Segment 2B	▭ Civic
▭ Segment 3A	▭ Commercial
▭ Segment 3B	▭ Forested Area
▭ Segment 3C	▭ Industrial
▭ Segment 4	▭ Park
▭ Segment 5	▭ Residential
Structures	▭ Rural
◆ Agriculture	▭ Transportation
▲ Barn / Shed	▭ Unclassified
■ Commercial	▭ Utility
■ Commercial within LOD	▭ Vacant
◆ Community Facility	▭ Water Feature
◆ Community Facility within LOD	
✱ Cultural Resources	
● Oil / Gas	
■ Residential	
■ Residential within LOD	
⊗ Transportation	
○ Unknown Structure	
⊕ Utility	

*Inaccuracies in the original county appraisal district property data may result in misalignment with aerial imagery.
 *Only structures within 200 feet of the LOD were evaluated for analysis purposes. Land use is only displayed within a quarter mile of the LOD.
Data Sources: County/City Boundaries - TxDOT 2013; Land Use - Respective County Appraisal Districts (2011, 2015, 2016), CLS (2017)
Aerial Imagery: USDA NAIP 2014



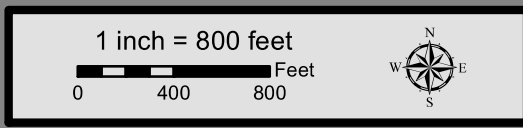


**Dallas to Houston
High-Speed Rail Project
Land Use
Segment 3C
Sheet 145 of 257**

Legend

Track Configuration	Jurisdictional Boundaries
— Viaduct	▭ County Boundary
▬ Embankment	▭ City Boundary
▬ Cut	▭ USACE Bardwell Lake
Limits of Disturbance	▭ Fort Boggy SP
▭ Segment 1	Land Use
▭ Segment 2A	▭ Agriculture
▭ Segment 2B	▭ Civic
▭ Segment 3A	▭ Commercial
▭ Segment 3B	▭ Forested Area
▭ Segment 3C	▭ Industrial
▭ Segment 4	▭ Park
▭ Segment 5	▭ Residential
Structures	▭ Rural
◆ Agriculture	▭ Transportation
▲ Barn / Shed	▭ Unclassified
■ Commercial	▭ Utility
■ Commercial within LOD	▭ Vacant
◆ Community Facility	▭ Water Feature
◆ Community Facility within LOD	
✱ Cultural Resources	
● Oil / Gas	
■ Residential	
■ Residential within LOD	
⊗ Transportation	
○ Unknown Structure	
⊕ Utility	

*Inaccuracies in the original county appraisal district property data may result in misalignment with aerial imagery.
*Only structures within 200 feet of the LOD were evaluated for analysis purposes. Land use is only displayed within a quarter mile of the LOD.
Data Sources: County/City Boundaries - TxDOT 2013; Land Use - Respective County Appraisal Districts (2011, 2015, 2016), CLS (2017)
Aerial Imagery: USDA NAIP 2014



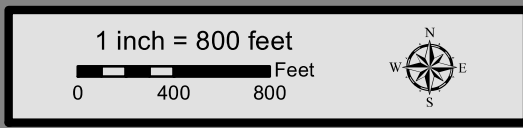


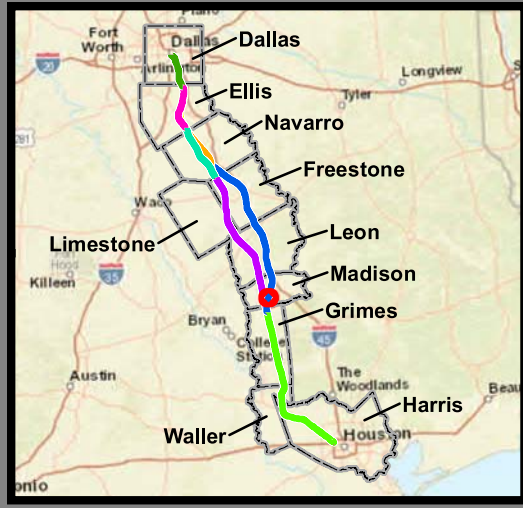
**Dallas to Houston
High-Speed Rail Project
Land Use
Segment 3C
Sheet 146 of 257**

Legend

Track Configuration	Jurisdictional Boundaries
— Viaduct	▭ County Boundary
▬ Embankment	▭ City Boundary
▭ Cut	▭ USACE Bardwell Lake
Limits of Disturbance	▭ Fort Boggy SP
▭ Segment 1	Land Use
▭ Segment 2A	▭ Agriculture
▭ Segment 2B	▭ Civic
▭ Segment 3A	▭ Commercial
▭ Segment 3B	▭ Forested Area
▭ Segment 3C	▭ Industrial
▭ Segment 4	▭ Park
▭ Segment 5	▭ Residential
Structures	▭ Rural
◆ Agriculture	▭ Transportation
▲ Barn / Shed	▭ Unclassified
■ Commercial	▭ Utility
■ Commercial within LOD	▭ Vacant
◆ Community Facility	▭ Water Feature
◆ Community Facility within LOD	
✱ Cultural Resources	
● Oil / Gas	
■ Residential	
■ Residential within LOD	
⊗ Transportation	
○ Unknown Structure	
⊕ Utility	

*Inaccuracies in the original county appraisal district property data may result in misalignment with aerial imagery.
 *Only structures within 200 feet of the LOD were evaluated for analysis purposes. Land use is only displayed within a quarter mile of the LOD.
Data Sources: County/City Boundaries - TxDOT 2013; Land Use - Respective County Appraisal Districts (2011, 2015, 2016), CLS (2017)
Aerial Imagery: USDA NAIP 2014



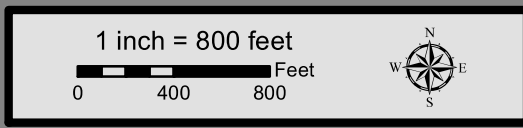


**Dallas to Houston
High-Speed Rail Project
Land Use
Segment 3C
Sheet 147 of 257**

Legend

Track Configuration	Jurisdictional Boundaries
— Viaduct	▭ County Boundary
▬ Embankment	▭ City Boundary
▬ Cut	▭ USACE Bardwell Lake
Limits of Disturbance	▭ Fort Boggy SP
▭ Segment 1	Land Use
▭ Segment 2A	▭ Agriculture
▭ Segment 2B	▭ Civic
▭ Segment 3A	▭ Commercial
▭ Segment 3B	▭ Forested Area
▭ Segment 3C	▭ Industrial
▭ Segment 4	▭ Park
▭ Segment 5	▭ Residential
Structures	▭ Rural
◆ Agriculture	▭ Transportation
▲ Barn / Shed	▭ Unclassified
▭ Commercial	▭ Utility
▭ Commercial within LOD	▭ Vacant
▭ Community Facility	▭ Water Feature
▭ Community Facility within LOD	
✱ Cultural Resources	
● Oil / Gas	
▭ Residential	
▭ Residential within LOD	
⊗ Transportation	
○ Unknown Structure	
⊕ Utility	

*Inaccuracies in the original county appraisal district property data may result in misalignment with aerial imagery.
*Only structures within 200 feet of the LOD were evaluated for analysis purposes. Land use is only displayed within a quarter mile of the LOD.
Data Sources: County/City Boundaries - TxDOT 2013; Land Use - Respective County Appraisal Districts (2011, 2015, 2016), CLS (2017)
Aerial Imagery: USDA NAIP 2014



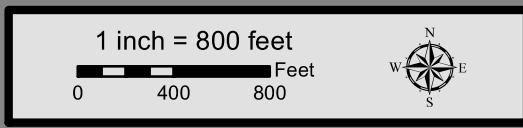


**Dallas to Houston
High-Speed Rail Project
Land Use
Segment 3C
Sheet 148 of 257**

Legend

Track Configuration	Jurisdictional Boundaries
— Viaduct	▬ County Boundary
▬ Embankment	▬ City Boundary
▬ Cut	▬ USACE Bardwell Lake
Limits of Disturbance	▬ Fort Boggy SP
▬ Segment 1	Land Use
▬ Segment 2A	▬ Agriculture
▬ Segment 2B	▬ Civic
▬ Segment 3A	▬ Commercial
▬ Segment 3B	▬ Forested Area
▬ Segment 3C	▬ Industrial
▬ Segment 4	▬ Park
▬ Segment 5	▬ Residential
Structures	▬ Rural
◆ Agriculture	▬ Transportation
▲ Barn / Shed	▬ Unclassified
■ Commercial	▬ Utility
■ Commercial within LOD	▬ Vacant
◆ Community Facility	▬ Water Feature
◆ Community Facility within LOD	
✱ Cultural Resources	
● Oil / Gas	
■ Residential	
■ Residential within LOD	
⊗ Transportation	
○ Unknown Structure	
⊕ Utility	

*Inaccuracies in the original county appraisal district property data may result in misalignment with aerial imagery.
 *Only structures within 200 feet of the LOD were evaluated for analysis purposes. Land use is only displayed within a quarter mile of the LOD.
Data Sources: County/City Boundaries - TxDOT 2013; Land Use - Respective County Appraisal Districts (2011, 2015, 2016), CLS (2017)
Aerial Imagery: USDA NAIP 2014



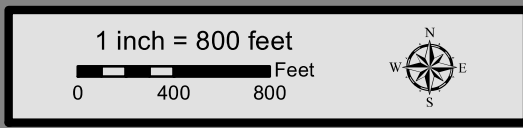


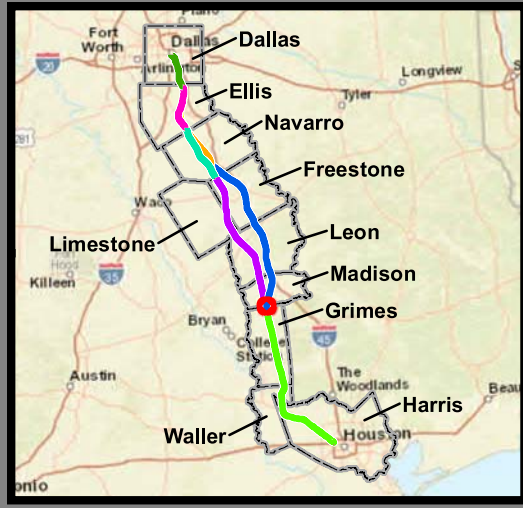
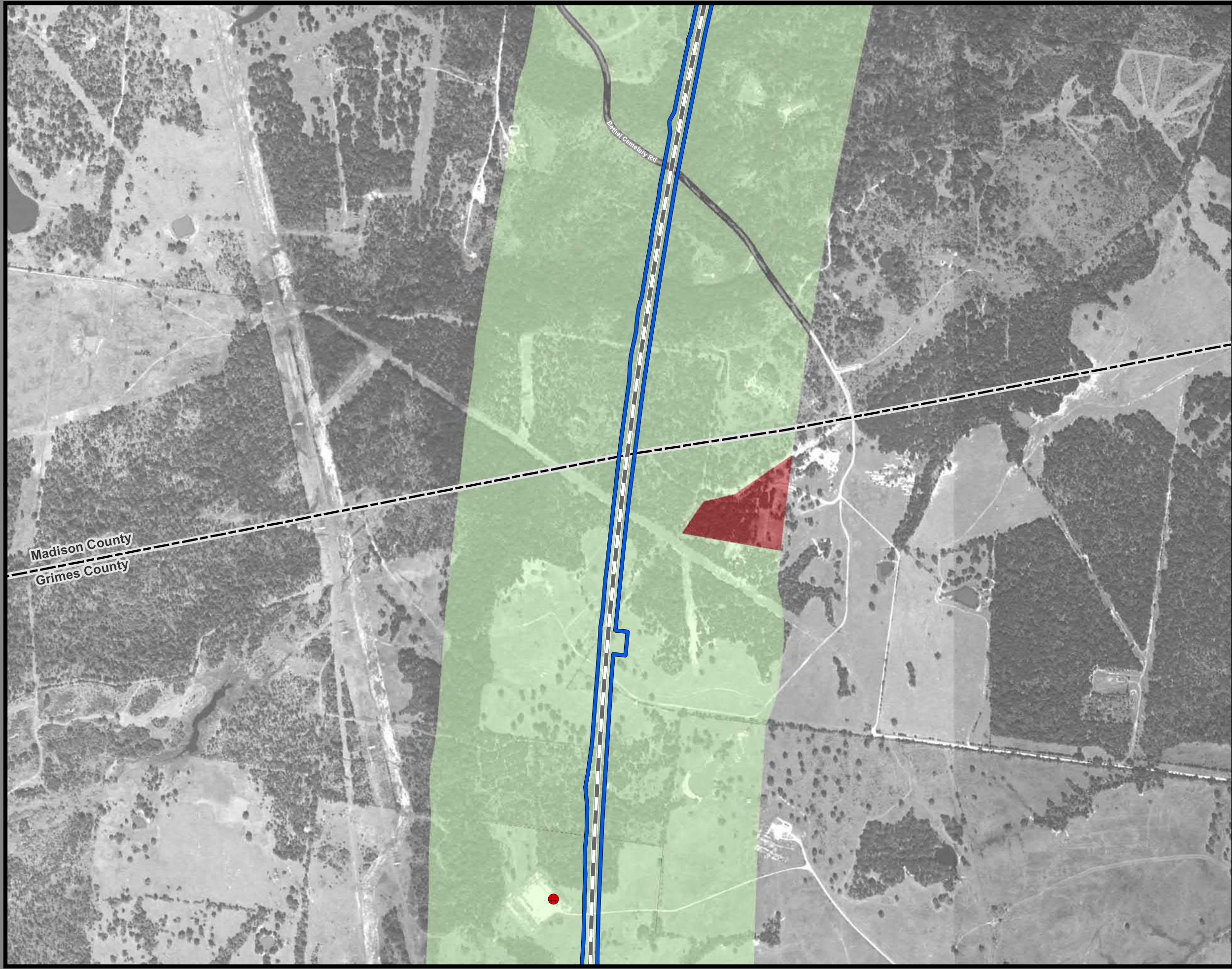
**Dallas to Houston
High-Speed Rail Project
Land Use
Segment 3C
Sheet 149 of 257**

Legend

Track Configuration	Jurisdictional Boundaries
— Viaduct	▭ County Boundary
▬ Embankment	▭ City Boundary
▬ Cut	▭ USACE Bardwell Lake
Limits of Disturbance	▭ Fort Boggy SP
▭ Segment 1	Land Use
▭ Segment 2A	▭ Agriculture
▭ Segment 2B	▭ Civic
▭ Segment 3A	▭ Commercial
▭ Segment 3B	▭ Forested Area
▭ Segment 3C	▭ Industrial
▭ Segment 4	▭ Park
▭ Segment 5	▭ Residential
Structures	▭ Rural
◆ Agriculture	▭ Transportation
▲ Barn / Shed	▭ Unclassified
■ Commercial	▭ Utility
■ Commercial within LOD	▭ Vacant
◆ Community Facility	▭ Water Feature
◆ Community Facility within LOD	
✱ Cultural Resources	
● Oil / Gas	
■ Residential	
■ Residential within LOD	
⊗ Transportation	
○ Unknown Structure	
⊕ Utility	

*Inaccuracies in the original county appraisal district property data may result in misalignment with aerial imagery.
*Only structures within 200 feet of the LOD were evaluated for analysis purposes. Land use is only displayed within a quarter mile of the LOD.
Data Sources: County/City Boundaries - TxDOT 2013; Land Use - Respective County Appraisal Districts (2011, 2015, 2016), CLS (2017)
Aerial Imagery: USDA NAIP 2014





**Dallas to Houston
High-Speed Rail Project
Land Use
Segment 3C
Sheet 150 of 257**

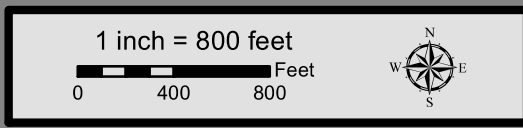
Legend

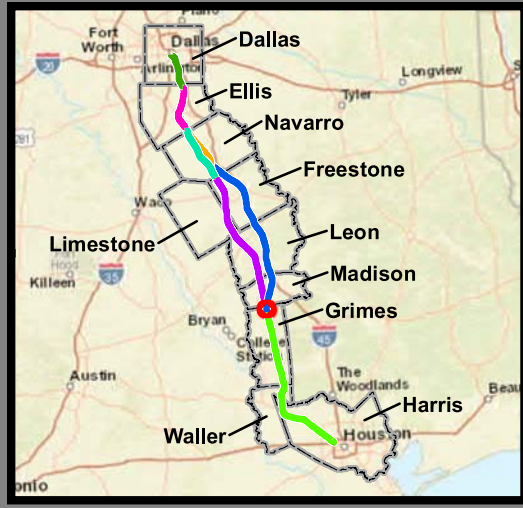
Track Configuration	Jurisdictional Boundaries
— Viaduct	▭ County Boundary
▬ Embankment	▭ City Boundary
— Cut	▭ USACE Bardwell Lake
Limits of Disturbance	▭ Fort Boggy SP
▭ Segment 1	Land Use
▭ Segment 2A	▭ Agriculture
▭ Segment 2B	▭ Civic
▭ Segment 3A	▭ Commercial
▭ Segment 3B	▭ Forested Area
▭ Segment 3C	▭ Industrial
▭ Segment 4	▭ Park
▭ Segment 5	▭ Residential
Structures	▭ Rural
◆ Agriculture	▭ Transportation
▲ Barn / Shed	▭ Unclassified
▭ Commercial	▭ Utility
▭ Commercial within LOD	▭ Vacant
▭ Community Facility	▭ Water Feature
▭ Community Facility within LOD	
✱ Cultural Resources	
● Oil / Gas	
▭ Residential	
▭ Residential within LOD	
⊗ Transportation	
○ Unknown Structure	
⊕ Utility	

This Sheet only depicts Segment 3C; Segment 4 is also located in this same area and can be referenced on Sheet 199.

*Inaccuracies in the original county appraisal district property data may result in misalignment with aerial imagery.
*Only structures within 200 feet of the LOD were evaluated for analysis purposes. Land use is only displayed within a quarter mile of the LOD.

Data Sources: County/City Boundaries - TxDOT 2013; Land Use - Respective County Appraisal Districts (2011, 2015, 2016), CLS (2017)
Aerial Imagery: USDA NAIP 2014





**Dallas to Houston
High-Speed Rail Project
Land Use
Segment 3C
Sheet 151 of 257**

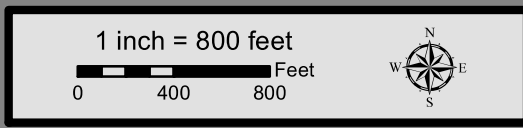
Legend

Track Configuration	Jurisdictional Boundaries
— Viaduct	▬ County Boundary
— Embankment	▬ City Boundary
— Cut	▬ USACE Bardwell Lake
	▬ Fort Boggy SP
Limits of Disturbance	Land Use
▬ Segment 1	▬ Agriculture
▬ Segment 2A	▬ Civic
▬ Segment 2B	▬ Commercial
▬ Segment 3A	▬ Forested Area
▬ Segment 3B	▬ Industrial
▬ Segment 3C	▬ Park
▬ Segment 4	▬ Residential
▬ Segment 5	▬ Rural
Structures	▬ Transportation
◆ Agriculture	▬ Unclassified
▲ Barn / Shed	▬ Utility
■ Commercial	▬ Vacant
■ Commercial within LOD	▬ Water Feature
◆ Community Facility	
◆ Community Facility within LOD	
☀ Cultural Resources	
● Oil / Gas	
■ Residential	
■ Residential within LOD	
⊗ Transportation	
○ Unknown Structure	
⊕ Utility	

This Sheet only depicts Segment 3C; Segment 4 is also located in this same area and can be referenced on Sheet 200.

*Inaccuracies in the original county appraisal district property data may result in misalignment with aerial imagery.
*Only structures within 200 feet of the LOD were evaluated for analysis purposes. Land use is only displayed within a quarter mile of the LOD.

Data Sources: County/City Boundaries - TxDOT 2013; Land Use - Respective County Appraisal Districts (2011, 2015, 2016), CLS (2017)
Aerial Imagery: USDA NAIP 2014





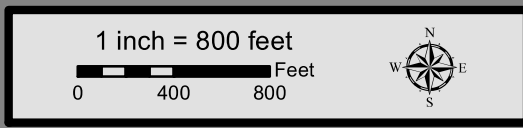
**Dallas to Houston
High-Speed Rail Project
Land Use
Segment 3C, 5
Sheet 152 of 257**

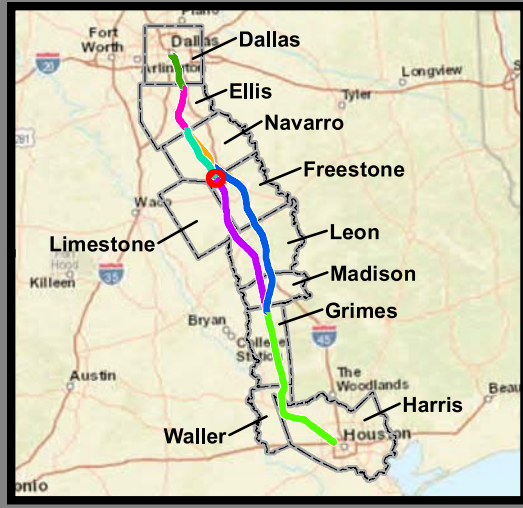
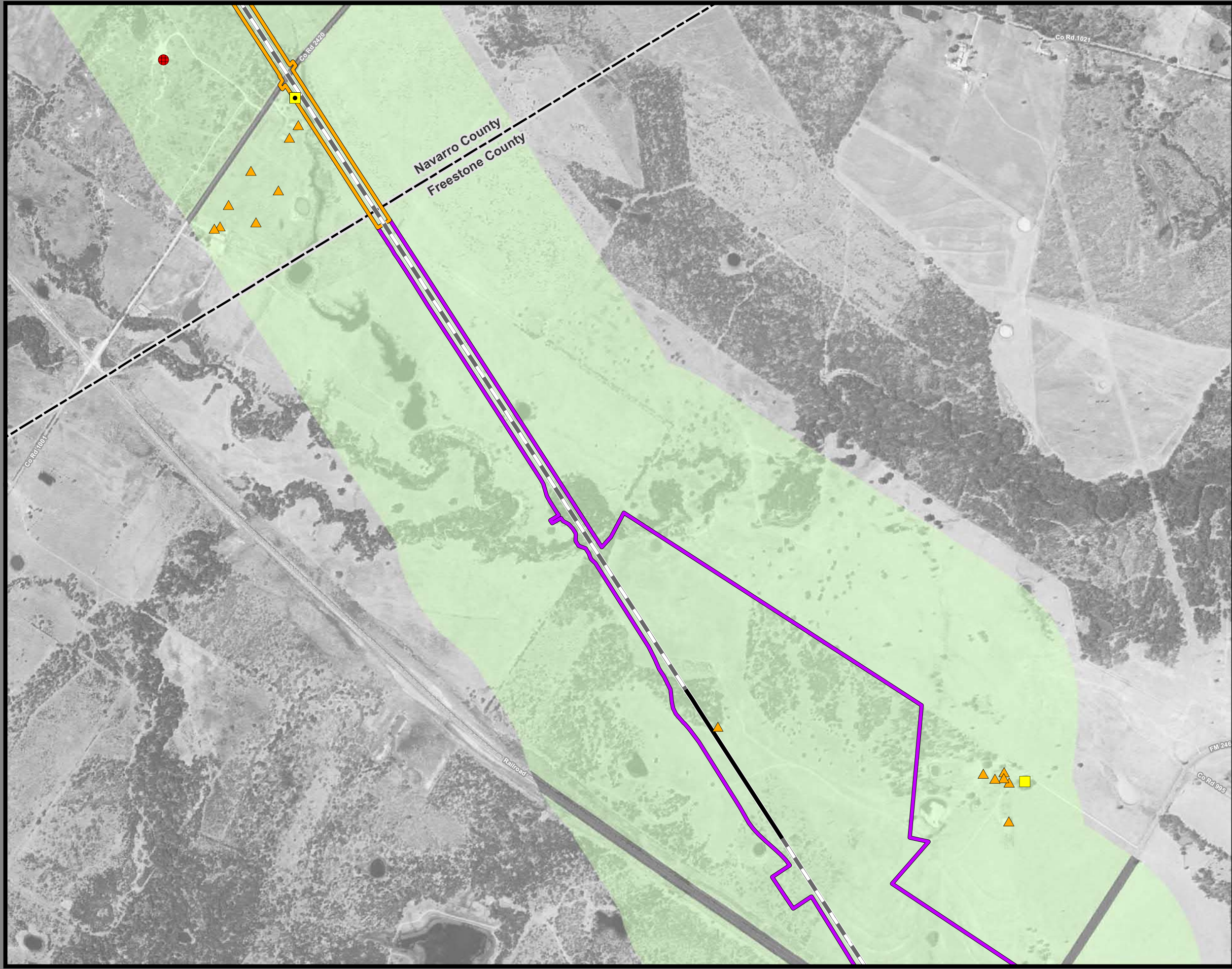
Legend	
Track Configuration	Jurisdictional Boundaries
— Viaduct	▭ County Boundary
— Embankment	▭ City Boundary
— Cut	▭ USACE Bardwell Lake
Limits of Disturbance	▭ Fort Boggy SP
▭ Segment 1	Land Use
▭ Segment 2A	▭ Agriculture
▭ Segment 2B	▭ Civic
▭ Segment 3A	▭ Commercial
▭ Segment 3B	▭ Forested Area
▭ Segment 3C	▭ Industrial
▭ Segment 4	▭ Park
▭ Segment 5	▭ Residential
Structures	▭ Rural
◆ Agriculture	▭ Transportation
▲ Barn / Shed	▭ Unclassified
■ Commercial	▭ Utility
■ Commercial within LOD	▭ Vacant
◆ Community Facility	▭ Water Feature
◆ Community Facility within LOD	
☀ Cultural Resources	
● Oil / Gas	
■ Residential	
■ Residential within LOD	
⊗ Transportation	
○ Unknown Structure	
⊕ Utility	

This Sheet only depicts Segments 3C & 5; Segment 4 is also located in this same area and can be referenced on Sheet 201.

*Inaccuracies in the original county appraisal district property data may result in misalignment with aerial imagery.
*Only structures within 200 feet of the LOD were evaluated for analysis purposes. Land use is only displayed within a quarter mile of the LOD.

Data Sources: County/City Boundaries - TxDOT 2013; Land Use - Respective County Appraisal Districts (2011, 2015, 2016), CLS (2017)
Aerial Imagery: USDA NAIP 2014





**Dallas to Houston
High-Speed Rail Project
Land Use
Segment 3B, 4
Sheet 153 of 257**

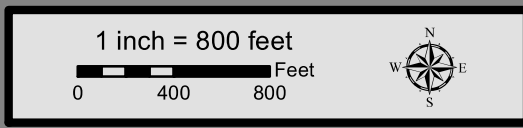
Legend

<p>Track Configuration</p> <ul style="list-style-type: none"> — Viaduct — Embankment — Cut <p>Limits of Disturbance</p> <ul style="list-style-type: none"> — Segment 1 — Segment 2A — Segment 2B — Segment 3A — Segment 3B — Segment 3C — Segment 4 — Segment 5 <p>Structures</p> <ul style="list-style-type: none"> ◆ Agriculture ▲ Barn / Shed ■ Commercial ■ Commercial within LOD ■ Community Facility ■ Community Facility within LOD ✱ Cultural Resources ● Oil / Gas ■ Residential ■ Residential within LOD ⊗ Transportation ○ Unknown Structure ⊕ Utility 	<p>Jurisdictional Boundaries</p> <ul style="list-style-type: none"> — County Boundary — City Boundary — USACE Bardwell Lake — Fort Boggy SP <p>Land Use</p> <ul style="list-style-type: none"> — Agriculture — Civic — Commercial — Forested Area — Industrial — Park — Residential — Rural — Transportation — Unclassified — Utility — Vacant — Water Feature
--	---

This Sheet only depicts Segments 3B & 4; Segment 3A is also located in this same area and can be referenced on Sheet 61.

*Inaccuracies in the original county appraisal district property data may result in misalignment with aerial imagery.
*Only structures within 200 feet of the LOD were evaluated for analysis purposes. Land use is only displayed within a quarter mile of the LOD.

Data Sources: County/City Boundaries - TxDOT 2013; Land Use - Respective County Appraisal Districts (2011, 2015, 2016), CLS (2017)
Aerial Imagery: USDA NAIP 2014



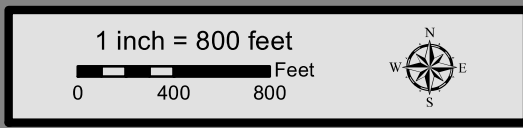


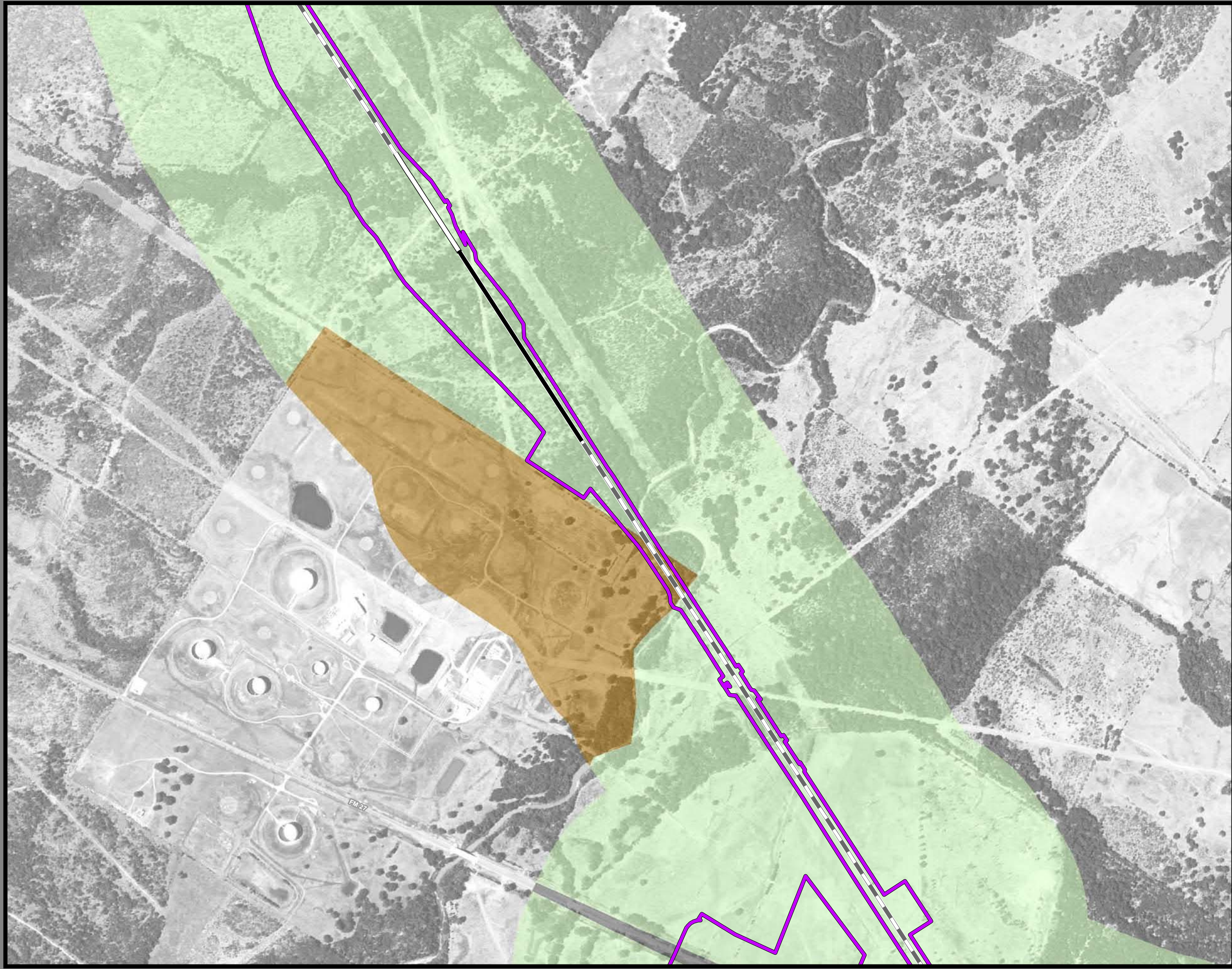
**Dallas to Houston
High-Speed Rail Project
Land Use
Segment 4
Sheet 154 of 257**

Legend

Track Configuration	Jurisdictional Boundaries
— Viaduct	▭ County Boundary
— Embankment	▭ City Boundary
— Cut	▭ USACE Bardwell Lake
Limits of Disturbance	▭ Fort Boggy SP
▭ Segment 1	Land Use
▭ Segment 2A	▭ Agriculture
▭ Segment 2B	▭ Civic
▭ Segment 3A	▭ Commercial
▭ Segment 3B	▭ Forested Area
▭ Segment 3C	▭ Industrial
▭ Segment 4	▭ Park
▭ Segment 5	▭ Residential
Structures	▭ Rural
◆ Agriculture	▭ Transportation
▲ Barn / Shed	▭ Unclassified
■ Commercial	▭ Utility
■ Commercial within LOD	▭ Vacant
◆ Community Facility	▭ Water Feature
◆ Community Facility within LOD	
✱ Cultural Resources	
● Oil / Gas	
■ Residential	
■ Residential within LOD	
⊗ Transportation	
○ Unknown Structure	
⊕ Utility	

*Inaccuracies in the original county appraisal district property data may result in misalignment with aerial imagery.
*Only structures within 200 feet of the LOD were evaluated for analysis purposes. Land use is only displayed within a quarter mile of the LOD.
Data Sources: County/City Boundaries - TxDOT 2013; Land Use - Respective County Appraisal Districts (2011, 2015, 2016), CLS (2017)
Aerial Imagery: USDA NAIP 2014



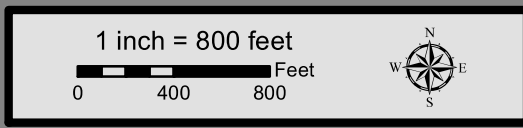


**Dallas to Houston
High-Speed Rail Project
Land Use
Segment 4
Sheet 155 of 257**

Legend

Track Configuration	Jurisdictional Boundaries
— Viaduct	▭ County Boundary
— Embankment	▭ City Boundary
— Cut	▭ USACE Bardwell Lake
Limits of Disturbance	▭ Fort Boggy SP
▭ Segment 1	Land Use
▭ Segment 2A	▭ Agriculture
▭ Segment 2B	▭ Civic
▭ Segment 3A	▭ Commercial
▭ Segment 3B	▭ Forested Area
▭ Segment 3C	▭ Industrial
▭ Segment 4	▭ Park
▭ Segment 5	▭ Residential
Structures	▭ Rural
◆ Agriculture	▭ Transportation
▲ Barn / Shed	▭ Unclassified
■ Commercial	▭ Utility
■ Commercial within LOD	▭ Vacant
◆ Community Facility	▭ Water Feature
◆ Community Facility within LOD	
✪ Cultural Resources	
● Oil / Gas	
■ Residential	
■ Residential within LOD	
⊗ Transportation	
○ Unknown Structure	
⊕ Utility	

*Inaccuracies in the original county appraisal district property data may result in misalignment with aerial imagery.
*Only structures within 200 feet of the LOD were evaluated for analysis purposes. Land use is only displayed within a quarter mile of the LOD.
Data Sources: County/City Boundaries - TxDOT 2013; Land Use - Respective County Appraisal Districts (2011, 2015, 2016), CLS (2017)
Aerial Imagery: USDA NAIP 2014



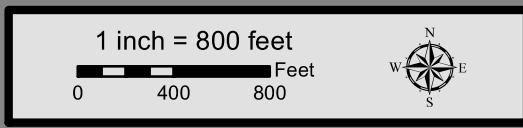


**Dallas to Houston
High-Speed Rail Project
Land Use
Segment 4
Sheet 156 of 257**

Legend

<p>Track Configuration</p> <ul style="list-style-type: none"> — Viaduct — Embankment — Cut <p>Limits of Disturbance</p> <ul style="list-style-type: none"> — Segment 1 — Segment 2A — Segment 2B — Segment 3A — Segment 3B — Segment 3C — Segment 4 — Segment 5 <p>Structures</p> <ul style="list-style-type: none"> ◆ Agriculture ▲ Barn / Shed ■ Commercial ■ Commercial within LOD ◆ Community Facility ◆ Community Facility within LOD ✱ Cultural Resources ● Oil / Gas ■ Residential ■ Residential within LOD ⊗ Transportation ○ Unknown Structure ⊕ Utility 	<p>Jurisdictional Boundaries</p> <ul style="list-style-type: none"> — County Boundary — City Boundary — USACE Bardwell Lake — Fort Boggy SP <p>Land Use</p> <ul style="list-style-type: none"> — Agriculture — Civic — Commercial — Forested Area — Industrial — Park — Residential — Rural — Transportation — Unclassified — Utility — Vacant — Water Feature
--	---

*Inaccuracies in the original county appraisal district property data may result in misalignment with aerial imagery.
 *Only structures within 200 feet of the LOD were evaluated for analysis purposes. Land use is only displayed within a quarter mile of the LOD.
Data Sources: County/City Boundaries - TxDOT 2013; Land Use - Respective County Appraisal Districts (2011, 2015, 2016), CLS (2017)
Aerial Imagery: USDA NAIP 2014



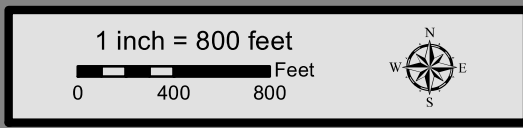


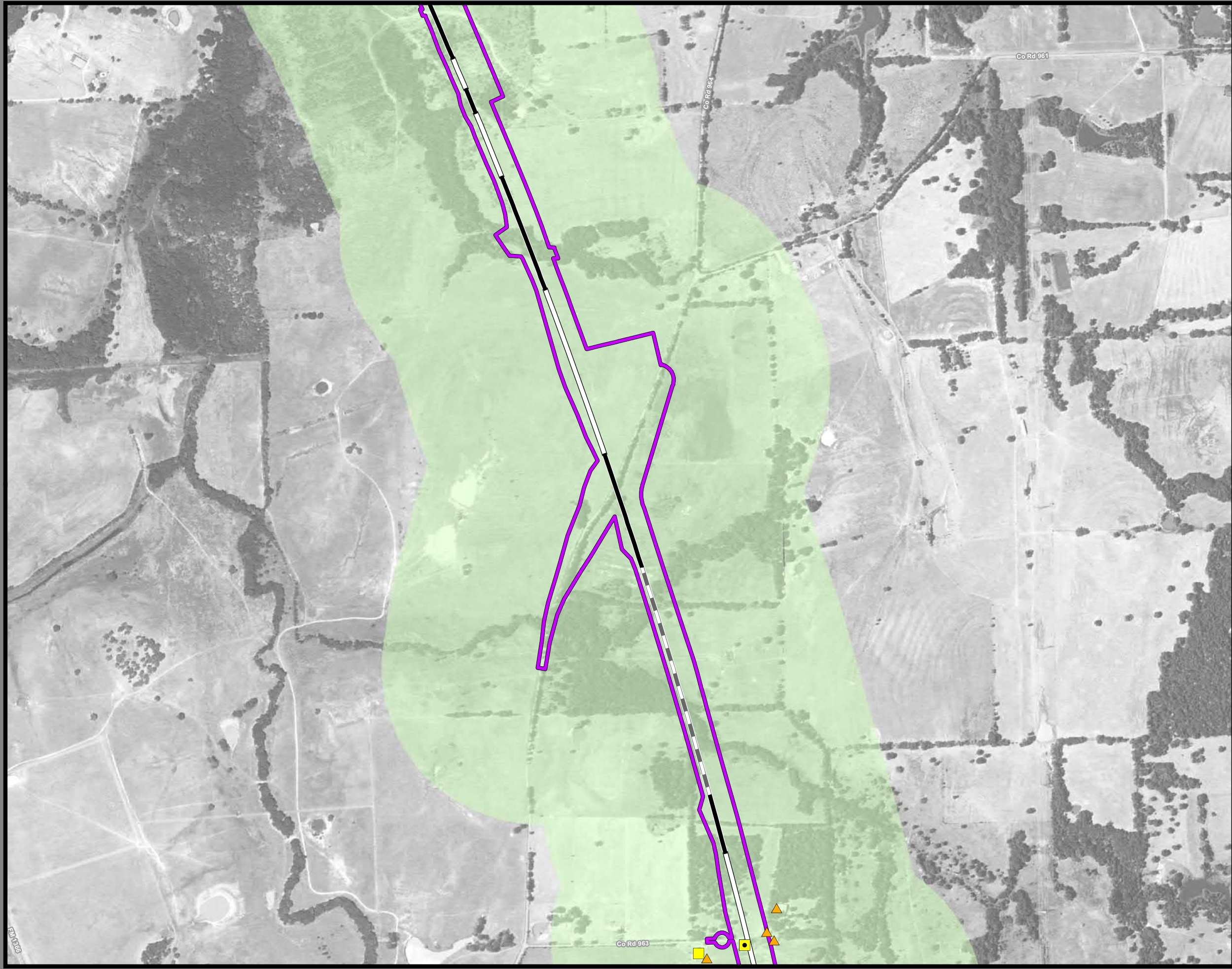
**Dallas to Houston
High-Speed Rail Project
Land Use
Segment 4
Sheet 157 of 257**

Legend

<p>Track Configuration</p> <ul style="list-style-type: none"> — Viaduct — Embankment — Cut <p>Limits of Disturbance</p> <ul style="list-style-type: none"> — Segment 1 — Segment 2A — Segment 2B — Segment 3A — Segment 3B — Segment 3C — Segment 4 — Segment 5 <p>Structures</p> <ul style="list-style-type: none"> ◆ Agriculture ▲ Barn / Shed ■ Commercial ■ Commercial within LOD ■ Community Facility ■ Community Facility within LOD ✱ Cultural Resources ● Oil / Gas ■ Residential ■ Residential within LOD ⊗ Transportation ○ Unknown Structure ⊕ Utility 	<p>Jurisdictional Boundaries</p> <ul style="list-style-type: none"> — County Boundary — City Boundary — USACE Bardwell Lake — Fort Boggy SP <p>Land Use</p> <ul style="list-style-type: none"> — Agriculture — Civic — Commercial — Forested Area — Industrial — Park — Residential — Rural — Transportation — Unclassified — Utility — Vacant — Water Feature
--	---

*Inaccuracies in the original county appraisal district property data may result in misalignment with aerial imagery.
*Only structures within 200 feet of the LOD were evaluated for analysis purposes. Land use is only displayed within a quarter mile of the LOD.
Data Sources: County/City Boundaries - TxDOT 2013; Land Use - Respective County Appraisal Districts (2011, 2015, 2016), CLS (2017)
Aerial Imagery: USDA NAIP 2014



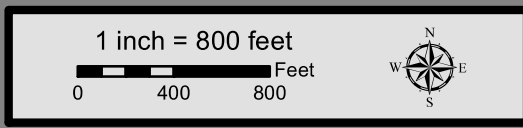


**Dallas to Houston
High-Speed Rail Project
Land Use
Segment 4
Sheet 158 of 257**

Legend

<p>Track Configuration</p> <ul style="list-style-type: none"> — Viaduct — Embankment — Cut <p>Limits of Disturbance</p> <ul style="list-style-type: none"> Segment 1 Segment 2A Segment 2B Segment 3A Segment 3B Segment 3C Segment 4 Segment 5 <p>Structures</p> <ul style="list-style-type: none"> Agriculture Barn / Shed Commercial Commercial within LOD Community Facility Community Facility within LOD Cultural Resources Oil / Gas Residential Residential within LOD Transportation Unknown Structure Utility 	<p>Jurisdictional Boundaries</p> <ul style="list-style-type: none"> County Boundary City Boundary USACE Bardwell Lake Fort Boggy SP <p>Land Use</p> <ul style="list-style-type: none"> Agriculture Civic Commercial Forested Area Industrial Park Residential Rural Transportation Unclassified Utility Vacant Water Feature
--	---

*Inaccuracies in the original county appraisal district property data may result in misalignment with aerial imagery.
 *Only structures within 200 feet of the LOD were evaluated for analysis purposes. Land use is only displayed within a quarter mile of the LOD.
Data Sources: County/City Boundaries - TxDOT 2013; Land Use - Respective County Appraisal Districts (2011, 2015, 2016), CLS (2017)
Aerial Imagery: USDA NAIP 2014



FM 3366

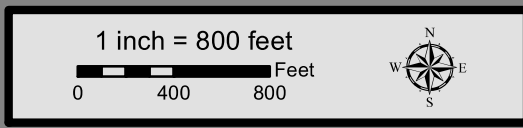


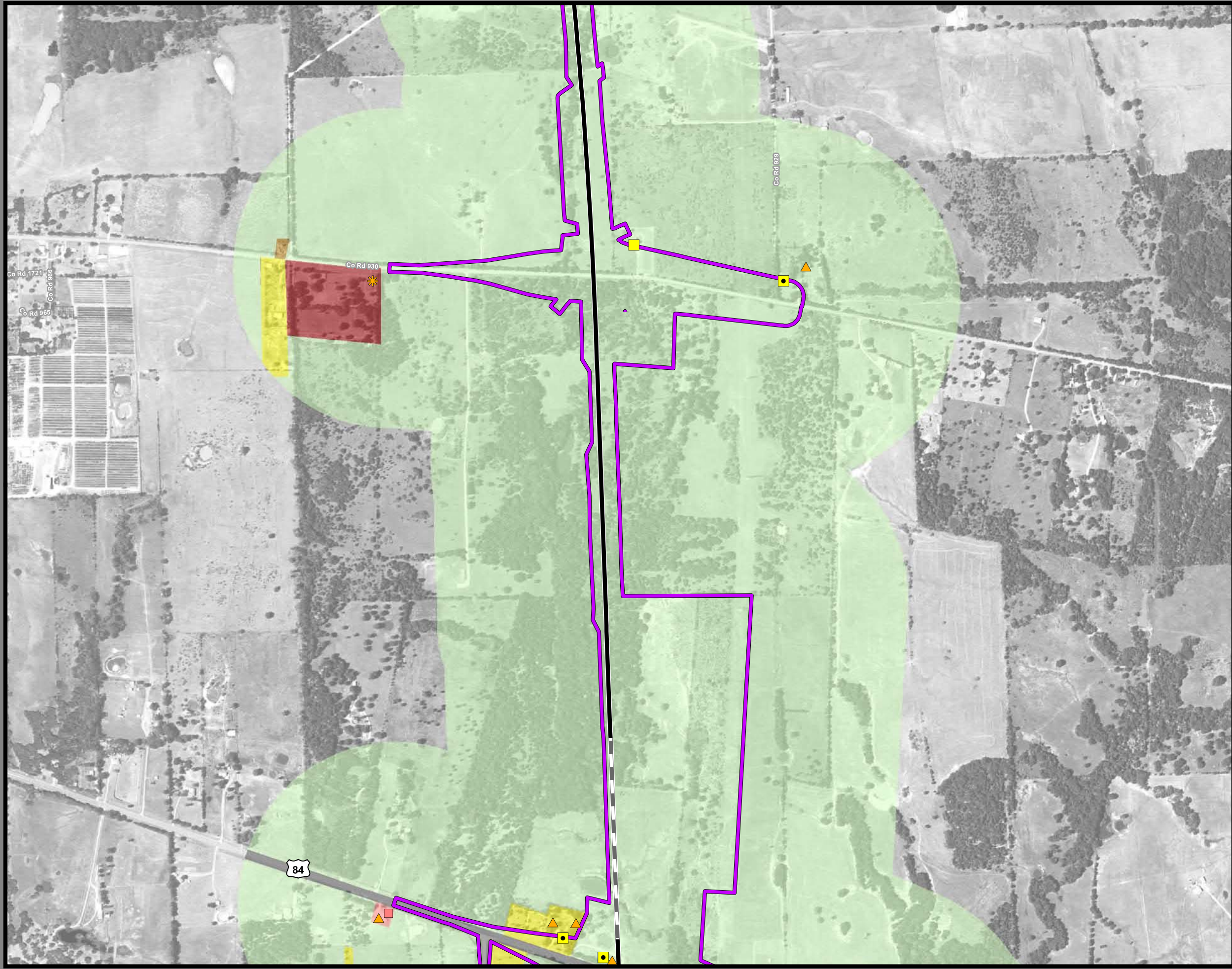
**Dallas to Houston
High-Speed Rail Project
Land Use
Segment 4
Sheet 159 of 257**

Legend

Track Configuration	Jurisdictional Boundaries
— Viaduct	▭ County Boundary
— Embankment	▭ City Boundary
— Cut	▭ USACE Bardwell Lake
Limits of Disturbance	▭ Fort Boggy SP
▭ Segment 1	Land Use
▭ Segment 2A	▭ Agriculture
▭ Segment 2B	▭ Civic
▭ Segment 3A	▭ Commercial
▭ Segment 3B	▭ Forested Area
▭ Segment 3C	▭ Industrial
▭ Segment 4	▭ Park
▭ Segment 5	▭ Residential
Structures	▭ Rural
◆ Agriculture	▭ Transportation
▲ Barn / Shed	▭ Unclassified
■ Commercial	▭ Utility
■ Commercial within LOD	▭ Vacant
◆ Community Facility	▭ Water Feature
◆ Community Facility within LOD	
✱ Cultural Resources	
● Oil / Gas	
■ Residential	
■ Residential within LOD	
⊗ Transportation	
○ Unknown Structure	
⊕ Utility	

*Inaccuracies in the original county appraisal district property data may result in misalignment with aerial imagery.
 *Only structures within 200 feet of the LOD were evaluated for analysis purposes. Land use is only displayed within a quarter mile of the LOD.
Data Sources: County/City Boundaries - TxDOT 2013; Land Use - Respective County Appraisal Districts (2011, 2015, 2016), CLS (2017)
Aerial Imagery: USDA NAIP 2014



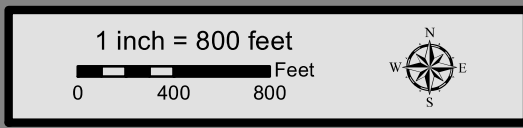


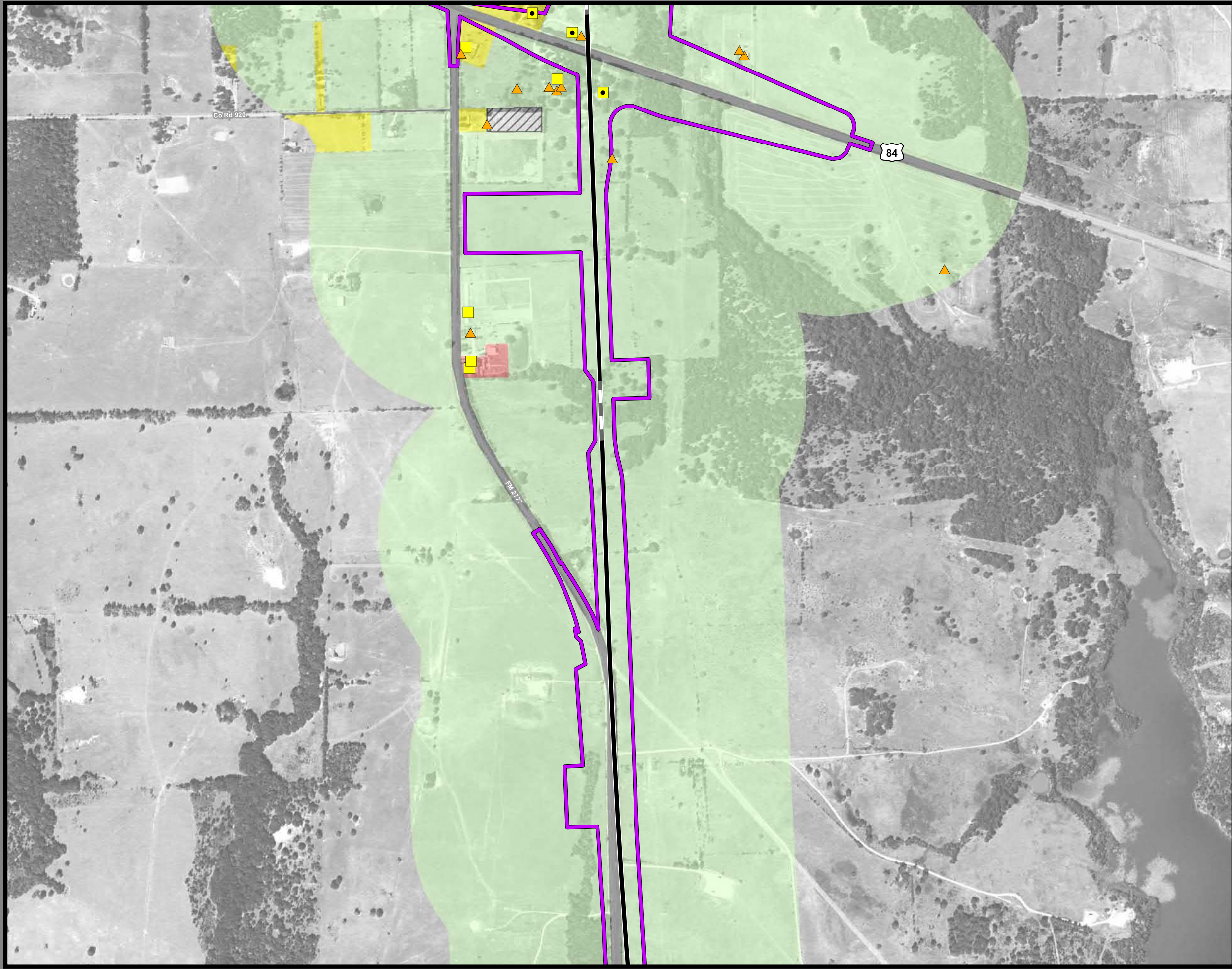
**Dallas to Houston
High-Speed Rail Project
Land Use
Segment 4
Sheet 160 of 257**

Legend

Track Configuration	Jurisdictional Boundaries
— Viaduct	▭ County Boundary
▬ Embankment	▭ City Boundary
▬ Cut	▭ USACE Bardwell Lake
Limits of Disturbance	▭ Fort Boggy SP
▭ Segment 1	Land Use
▭ Segment 2A	▭ Agriculture
▭ Segment 2B	▭ Civic
▭ Segment 3A	▭ Commercial
▭ Segment 3B	▭ Forested Area
▭ Segment 3C	▭ Industrial
▭ Segment 4	▭ Park
▭ Segment 5	▭ Residential
Structures	▭ Rural
◆ Agriculture	▭ Transportation
▲ Barn / Shed	▭ Unclassified
▭ Commercial	▭ Utility
▭ Commercial within LOD	▭ Vacant
▭ Community Facility	▭ Water Feature
▭ Community Facility within LOD	
✱ Cultural Resources	
● Oil / Gas	
▭ Residential	
▭ Residential within LOD	
⊗ Transportation	
○ Unknown Structure	
⊕ Utility	

*Inaccuracies in the original county appraisal district property data may result in misalignment with aerial imagery.
*Only structures within 200 feet of the LOD were evaluated for analysis purposes. Land use is only displayed within a quarter mile of the LOD.
Data Sources: County/City Boundaries - TxDOT 2013; Land Use - Respective County Appraisal Districts (2011, 2015, 2016), CLS (2017)
Aerial Imagery: USDA NAIP 2014



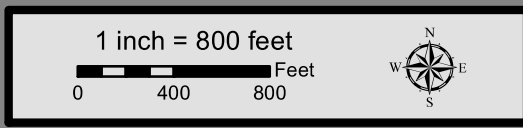


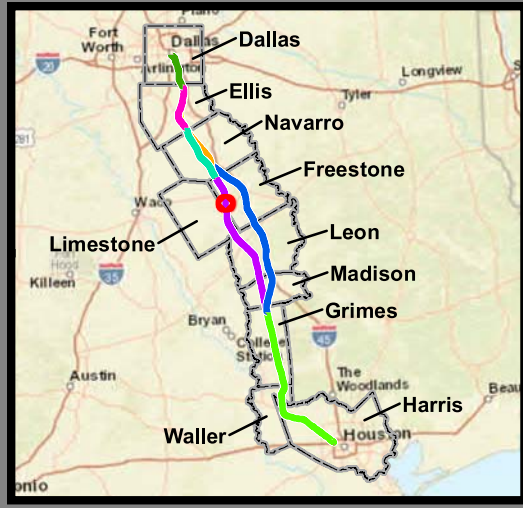
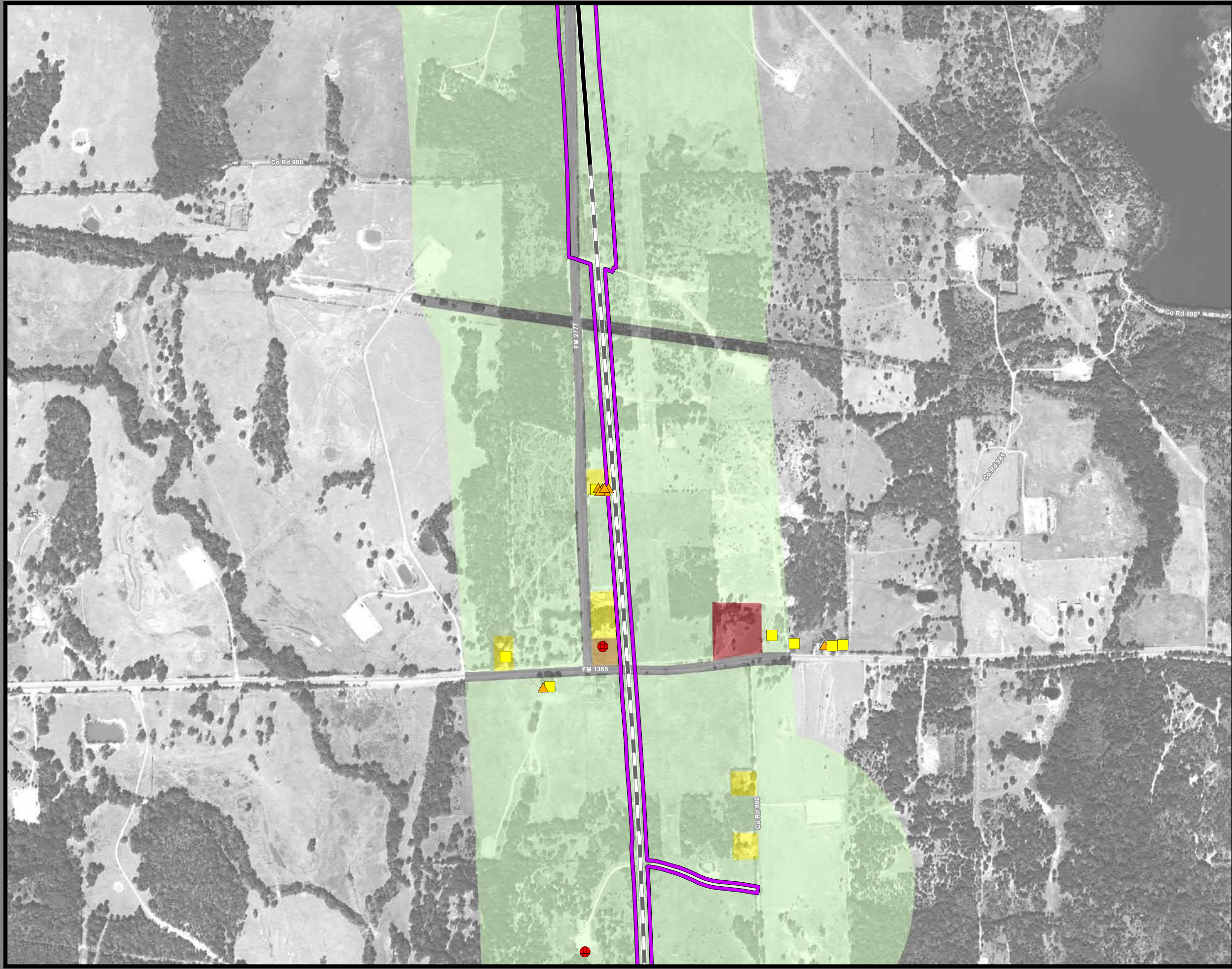
**Dallas to Houston
High-Speed Rail Project
Land Use
Segment 4
Sheet 161 of 257**

Legend

Track Configuration	Jurisdictional Boundaries
— Viaduct	▭ County Boundary
— Embankment	▭ City Boundary
— Cut	▭ USACE Bardwell Lake
Limits of Disturbance	▭ Fort Boggy SP
▭ Segment 1	Land Use
▭ Segment 2A	▭ Agriculture
▭ Segment 2B	▭ Civic
▭ Segment 3A	▭ Commercial
▭ Segment 3B	▭ Forested Area
▭ Segment 3C	▭ Industrial
▭ Segment 4	▭ Park
▭ Segment 5	▭ Residential
Structures	▭ Rural
◆ Agriculture	▭ Transportation
▲ Barn / Shed	▭ Unclassified
■ Commercial	▭ Utility
■ Commercial within LOD	▭ Vacant
◆ Community Facility	▭ Water Feature
◆ Community Facility within LOD	
✱ Cultural Resources	
● Oil / Gas	
■ Residential	
■ Residential within LOD	
⊗ Transportation	
○ Unknown Structure	
⊕ Utility	

*Inaccuracies in the original county appraisal district property data may result in misalignment with aerial imagery.
 *Only structures within 200 feet of the LOD were evaluated for analysis purposes. Land use is only displayed within a quarter mile of the LOD.
Data Sources: County/City Boundaries - TxDOT 2013; Land Use - Respective County Appraisal Districts (2011, 2015, 2016), CLS (2017)
Aerial Imagery: USDA NAIP 2014



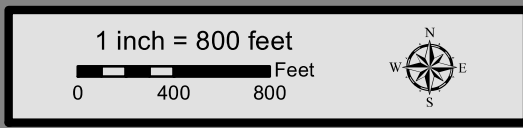


**Dallas to Houston
High-Speed Rail Project
Land Use
Segment 4
Sheet 162 of 257**

Legend

<p>Track Configuration</p> <ul style="list-style-type: none"> — Viaduct — Embankment — Cut <p>Limits of Disturbance</p> <ul style="list-style-type: none"> Segment 1 Segment 2A Segment 2B Segment 3A Segment 3B Segment 3C Segment 4 Segment 5 <p>Structures</p> <ul style="list-style-type: none"> Agriculture Barn / Shed Commercial Commercial within LOD Community Facility Community Facility within LOD Cultural Resources Oil / Gas Residential Residential within LOD Transportation Unknown Structure Utility 	<p>Jurisdictional Boundaries</p> <ul style="list-style-type: none"> County Boundary City Boundary USACE Bardwell Lake Fort Boggy SP <p>Land Use</p> <ul style="list-style-type: none"> Agriculture Civic Commercial Forested Area Industrial Park Residential Rural Transportation Unclassified Utility Vacant Water Feature
--	---

*Inaccuracies in the original county appraisal district property data may result in misalignment with aerial imagery.
 *Only structures within 200 feet of the LOD were evaluated for analysis purposes. Land use is only displayed within a quarter mile of the LOD.
Data Sources: County/City Boundaries - TxDOT 2013; Land Use - Respective County Appraisal Districts (2011, 2015, 2016), CLS (2017)
Aerial Imagery: USDA NAIP 2014



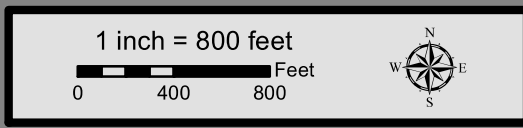


**Dallas to Houston
High-Speed Rail Project
Land Use
Segment 4
Sheet 163 of 257**

Legend

Track Configuration	Jurisdictional Boundaries
— Viaduct	▭ County Boundary
▬ Embankment	▭ City Boundary
— Cut	▭ USACE Bardwell Lake
Limits of Disturbance	▭ Fort Boggy SP
▭ Segment 1	Land Use
▭ Segment 2A	▭ Agriculture
▭ Segment 2B	▭ Civic
▭ Segment 3A	▭ Commercial
▭ Segment 3B	▭ Forested Area
▭ Segment 3C	▭ Industrial
▭ Segment 4	▭ Park
▭ Segment 5	▭ Residential
Structures	▭ Rural
◆ Agriculture	▭ Transportation
▲ Barn / Shed	▭ Unclassified
■ Commercial	▭ Utility
■ Commercial within LOD	▭ Vacant
◆ Community Facility	▭ Water Feature
◆ Community Facility within LOD	
✱ Cultural Resources	
● Oil / Gas	
■ Residential	
■ Residential within LOD	
⊗ Transportation	
○ Unknown Structure	
⊕ Utility	

*Inaccuracies in the original county appraisal district property data may result in misalignment with aerial imagery.
 *Only structures within 200 feet of the LOD were evaluated for analysis purposes. Land use is only displayed within a quarter mile of the LOD.
Data Sources: County/City Boundaries - TxDOT 2013; Land Use - Respective County Appraisal Districts (2011, 2015, 2016), CLS (2017)
Aerial Imagery: USDA NAIP 2014



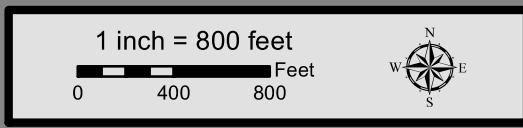


**Dallas to Houston
High-Speed Rail Project
Land Use
Segment 4
Sheet 164 of 257**

Legend

<p>Track Configuration</p> <ul style="list-style-type: none"> — Viaduct — Embankment — Cut <p>Limits of Disturbance</p> <ul style="list-style-type: none"> Segment 1 Segment 2A Segment 2B Segment 3A Segment 3B Segment 3C Segment 4 Segment 5 <p>Structures</p> <ul style="list-style-type: none"> Agriculture Barn / Shed Commercial Commercial within LOD Community Facility Community Facility within LOD Cultural Resources Oil / Gas Residential Residential within LOD Transportation Unknown Structure Utility 	<p>Jurisdictional Boundaries</p> <ul style="list-style-type: none"> County Boundary City Boundary USACE Bardwell Lake Fort Boggy SP <p>Land Use</p> <ul style="list-style-type: none"> Agriculture Civic Commercial Forested Area Industrial Park Residential Rural Transportation Unclassified Utility Vacant Water Feature
--	---

*Inaccuracies in the original county appraisal district property data may result in misalignment with aerial imagery.
*Only structures within 200 feet of the LOD were evaluated for analysis purposes. Land use is only displayed within a quarter mile of the LOD.
Data Sources: County/City Boundaries - TxDOT 2013; Land Use - Respective County Appraisal Districts (2011, 2015, 2016), CLS (2017)
Aerial Imagery: USDA NAIP 2014



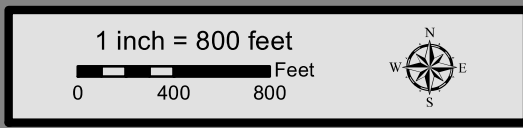


**Dallas to Houston
High-Speed Rail Project
Land Use
Segment 4
Sheet 165 of 257**

Legend

Track Configuration	Jurisdictional Boundaries
— Viaduct	▭ County Boundary
— Embankment	▭ City Boundary
— Cut	▭ USACE Bardwell Lake
Limits of Disturbance	▭ Fort Boggy SP
▭ Segment 1	Land Use
▭ Segment 2A	▭ Agriculture
▭ Segment 2B	▭ Civic
▭ Segment 3A	▭ Commercial
▭ Segment 3B	▭ Forested Area
▭ Segment 3C	▭ Industrial
▭ Segment 4	▭ Park
▭ Segment 5	▭ Residential
Structures	▭ Rural
◆ Agriculture	▭ Transportation
▲ Barn / Shed	▭ Unclassified
■ Commercial	▭ Utility
■ Commercial within LOD	▭ Vacant
◆ Community Facility	▭ Water Feature
◆ Community Facility within LOD	
✱ Cultural Resources	
● Oil / Gas	
■ Residential	
■ Residential within LOD	
⊗ Transportation	
○ Unknown Structure	
⊕ Utility	

*Inaccuracies in the original county appraisal district property data may result in misalignment with aerial imagery.
 *Only structures within 200 feet of the LOD were evaluated for analysis purposes. Land use is only displayed within a quarter mile of the LOD.
Data Sources: County/City Boundaries - TxDOT 2013; Land Use - Respective County Appraisal Districts (2011, 2015, 2016), CLS (2017)
Aerial Imagery: USDA NAIP 2014



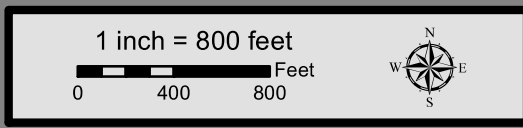


**Dallas to Houston
High-Speed Rail Project
Land Use
Segment 4
Sheet 166 of 257**

Legend

Track Configuration	Jurisdictional Boundaries
— Viaduct	▭ County Boundary
▬ Embankment	▭ City Boundary
▬ Cut	▭ USACE Bardwell Lake
Limits of Disturbance	▭ Fort Boggy SP
▭ Segment 1	Land Use
▭ Segment 2A	▭ Agriculture
▭ Segment 2B	▭ Civic
▭ Segment 3A	▭ Commercial
▭ Segment 3B	▭ Forested Area
▭ Segment 3C	▭ Industrial
▭ Segment 4	▭ Park
▭ Segment 5	▭ Residential
Structures	▭ Rural
◆ Agriculture	▭ Transportation
▲ Barn / Shed	▭ Unclassified
▭ Commercial	▭ Utility
▭ Commercial within LOD	▭ Vacant
▭ Community Facility	▭ Water Feature
▭ Community Facility within LOD	
✱ Cultural Resources	
● Oil / Gas	
▭ Residential	
▭ Residential within LOD	
⊗ Transportation	
○ Unknown Structure	
⊕ Utility	

*Inaccuracies in the original county appraisal district property data may result in misalignment with aerial imagery.
*Only structures within 200 feet of the LOD were evaluated for analysis purposes. Land use is only displayed within a quarter mile of the LOD.
Data Sources: County/City Boundaries - TxDOT 2013; Land Use - Respective County Appraisal Districts (2011, 2015, 2016), CLS (2017)
Aerial Imagery: USDA NAIP 2014



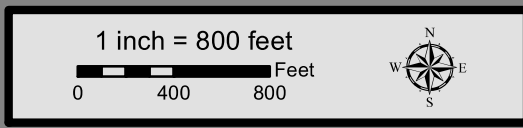


**Dallas to Houston
High-Speed Rail Project
Land Use
Segment 4
Sheet 167 of 257**

Legend

<p>Track Configuration</p> <ul style="list-style-type: none"> — Viaduct — Embankment — Cut <p>Limits of Disturbance</p> <ul style="list-style-type: none"> Segment 1 Segment 2A Segment 2B Segment 3A Segment 3B Segment 3C Segment 4 Segment 5 <p>Structures</p> <ul style="list-style-type: none"> Agriculture Barn / Shed Commercial Commercial within LOD Community Facility Community Facility within LOD Cultural Resources Oil / Gas Residential Residential within LOD Transportation Unknown Structure Utility 	<p>Jurisdictional Boundaries</p> <ul style="list-style-type: none"> County Boundary City Boundary USACE Bardwell Lake Fort Boggy SP <p>Land Use</p> <ul style="list-style-type: none"> Agriculture Civic Commercial Forested Area Industrial Park Residential Rural Transportation Unclassified Utility Vacant Water Feature
--	---

*Inaccuracies in the original county appraisal district property data may result in misalignment with aerial imagery.
*Only structures within 200 feet of the LOD were evaluated for analysis purposes. Land use is only displayed within a quarter mile of the LOD.
Data Sources: County/City Boundaries - TxDOT 2013; Land Use - Respective County Appraisal Districts (2011, 2015, 2016), CLS (2017)
Aerial Imagery: USDA NAIP 2014



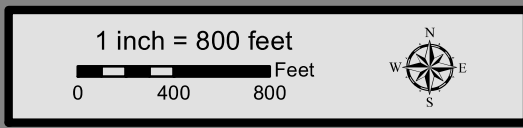


**Dallas to Houston
High-Speed Rail Project
Land Use
Segment 4
Sheet 168 of 257**

Legend

Track Configuration	Jurisdictional Boundaries
— Viaduct	▭ County Boundary
▬ Embankment	▭ City Boundary
▬ Cut	▭ USACE Bardwell Lake
Limits of Disturbance	▭ Fort Boggy SP
▭ Segment 1	Land Use
▭ Segment 2A	▭ Agriculture
▭ Segment 2B	▭ Civic
▭ Segment 3A	▭ Commercial
▭ Segment 3B	▭ Forested Area
▭ Segment 3C	▭ Industrial
▭ Segment 4	▭ Park
▭ Segment 5	▭ Residential
Structures	▭ Rural
◆ Agriculture	▭ Transportation
▲ Barn / Shed	▭ Unclassified
▭ Commercial	▭ Utility
▭ Commercial within LOD	▭ Vacant
▭ Community Facility	▭ Water Feature
▭ Community Facility within LOD	
✱ Cultural Resources	
● Oil / Gas	
▭ Residential	
▭ Residential within LOD	
⊗ Transportation	
○ Unknown Structure	
⊕ Utility	

*Inaccuracies in the original county appraisal district property data may result in misalignment with aerial imagery.
*Only structures within 200 feet of the LOD were evaluated for analysis purposes. Land use is only displayed within a quarter mile of the LOD.
Data Sources: County/City Boundaries - TxDOT 2013; Land Use - Respective County Appraisal Districts (2011, 2015, 2016), CLS (2017)
Aerial Imagery: USDA NAIP 2014



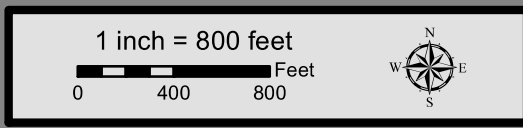


**Dallas to Houston
High-Speed Rail Project
Land Use
Segment 4
Sheet 169 of 257**

Legend

<p>Track Configuration</p> <ul style="list-style-type: none"> — Viaduct — Embankment — Cut <p>Limits of Disturbance</p> <ul style="list-style-type: none"> Segment 1 Segment 2A Segment 2B Segment 3A Segment 3B Segment 3C Segment 4 Segment 5 <p>Structures</p> <ul style="list-style-type: none"> Agriculture Barn / Shed Commercial Commercial within LOD Community Facility Community Facility within LOD Cultural Resources Oil / Gas Residential Residential within LOD Transportation Unknown Structure Utility 	<p>Jurisdictional Boundaries</p> <ul style="list-style-type: none"> County Boundary City Boundary USACE Bardwell Lake Fort Boggy SP <p>Land Use</p> <ul style="list-style-type: none"> Agriculture Civic Commercial Forested Area Industrial Park Residential Rural Transportation Unclassified Utility Vacant Water Feature
--	---

*Inaccuracies in the original county appraisal district property data may result in misalignment with aerial imagery.
*Only structures within 200 feet of the LOD were evaluated for analysis purposes. Land use is only displayed within a quarter mile of the LOD.
Data Sources: County/City Boundaries - TxDOT 2013; Land Use - Respective County Appraisal Districts (2011, 2015, 2016), CLS (2017)
Aerial Imagery: USDA NAIP 2014



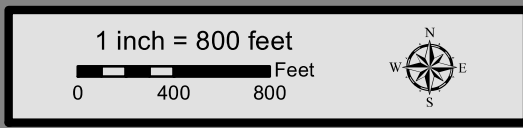


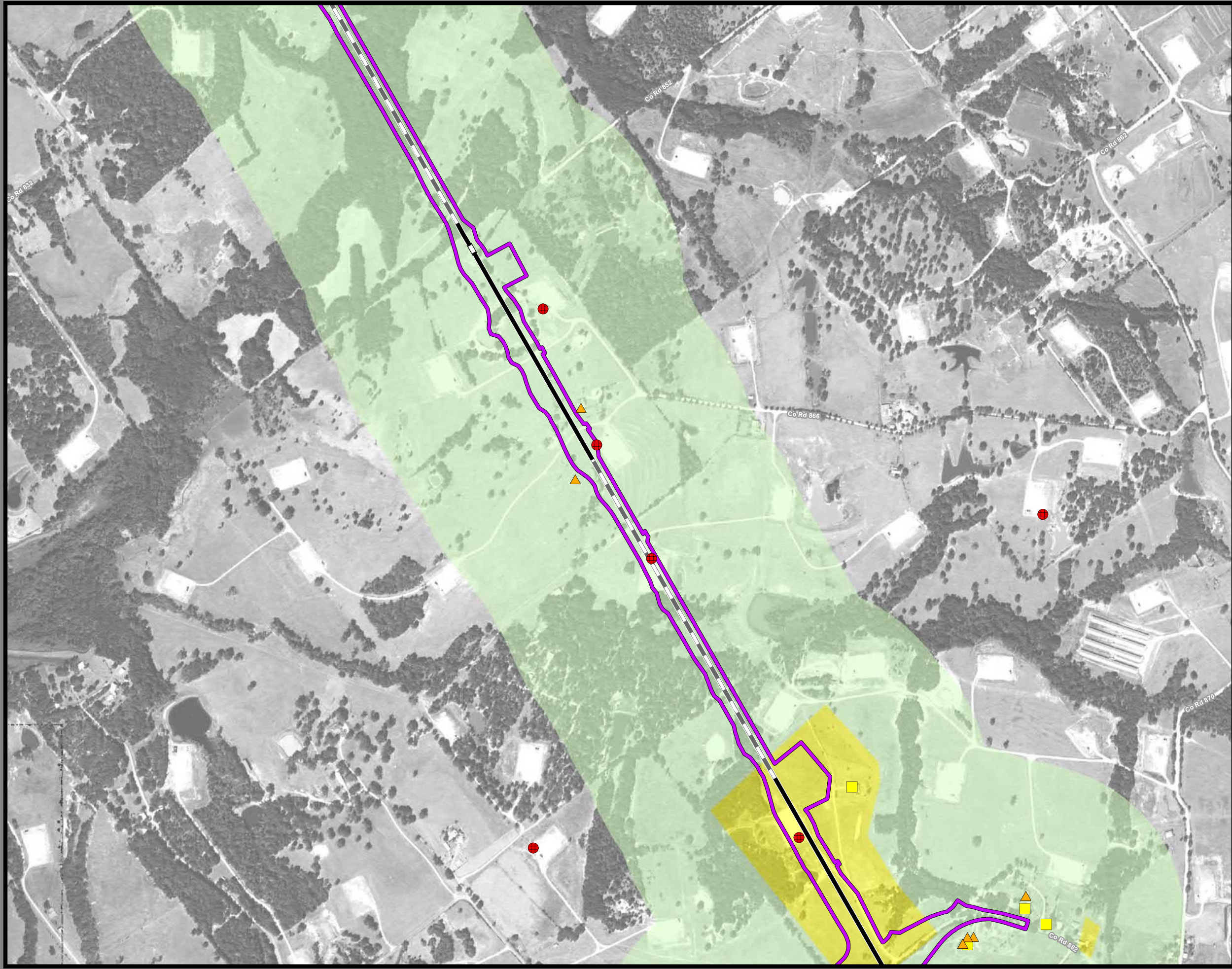
**Dallas to Houston
High-Speed Rail Project
Land Use
Segment 4
Sheet 170 of 257**

Legend

Track Configuration	Jurisdictional Boundaries
— Viaduct	▭ County Boundary
— Embankment	▭ City Boundary
— Cut	▭ USACE Bardwell Lake
	▭ Fort Boggy SP
Limits of Disturbance	Land Use
▭ Segment 1	▭ Agriculture
▭ Segment 2A	▭ Civic
▭ Segment 2B	▭ Commercial
▭ Segment 3A	▭ Forested Area
▭ Segment 3B	▭ Industrial
▭ Segment 3C	▭ Park
▭ Segment 4	▭ Residential
▭ Segment 5	▭ Rural
Structures	▭ Transportation
◆ Agriculture	▭ Unclassified
▲ Barn / Shed	▭ Utility
■ Commercial	▭ Vacant
■ Commercial within LOD	▭ Water Feature
◆ Community Facility	
◆ Community Facility within LOD	
✱ Cultural Resources	
● Oil / Gas	
■ Residential	
■ Residential within LOD	
⊗ Transportation	
○ Unknown Structure	
⊕ Utility	

*Inaccuracies in the original county appraisal district property data may result in misalignment with aerial imagery.
*Only structures within 200 feet of the LOD were evaluated for analysis purposes. Land use is only displayed within a quarter mile of the LOD.
Data Sources: County/City Boundaries - TxDOT 2013; Land Use - Respective County Appraisal Districts (2011, 2015, 2016), CLS (2017)
Aerial Imagery: USDA NAIP 2014



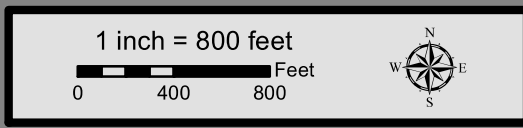


**Dallas to Houston
High-Speed Rail Project
Land Use
Segment 4
Sheet 171 of 257**

Legend

Track Configuration	Jurisdictional Boundaries
— Viaduct	▭ County Boundary
— Embankment	▭ City Boundary
— Cut	▭ USACE Bardwell Lake
Limits of Disturbance	▭ Fort Boggy SP
▭ Segment 1	Land Use
▭ Segment 2A	▭ Agriculture
▭ Segment 2B	▭ Civic
▭ Segment 3A	▭ Commercial
▭ Segment 3B	▭ Forested Area
▭ Segment 3C	▭ Industrial
▭ Segment 4	▭ Park
▭ Segment 5	▭ Residential
Structures	▭ Rural
◆ Agriculture	▭ Transportation
▲ Barn / Shed	▭ Unclassified
■ Commercial	▭ Utility
■ Commercial within LOD	▭ Vacant
◆ Community Facility	▭ Water Feature
◆ Community Facility within LOD	
✱ Cultural Resources	
● Oil / Gas	
■ Residential	
■ Residential within LOD	
⊗ Transportation	
○ Unknown Structure	
⊕ Utility	

*Inaccuracies in the original county appraisal district property data may result in misalignment with aerial imagery.
 *Only structures within 200 feet of the LOD were evaluated for analysis purposes. Land use is only displayed within a quarter mile of the LOD.
Data Sources: County/City Boundaries - TxDOT 2013; Land Use - Respective County Appraisal Districts (2011, 2015, 2016), CLS (2017)
Aerial Imagery: USDA NAIP 2014



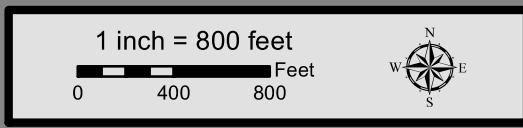


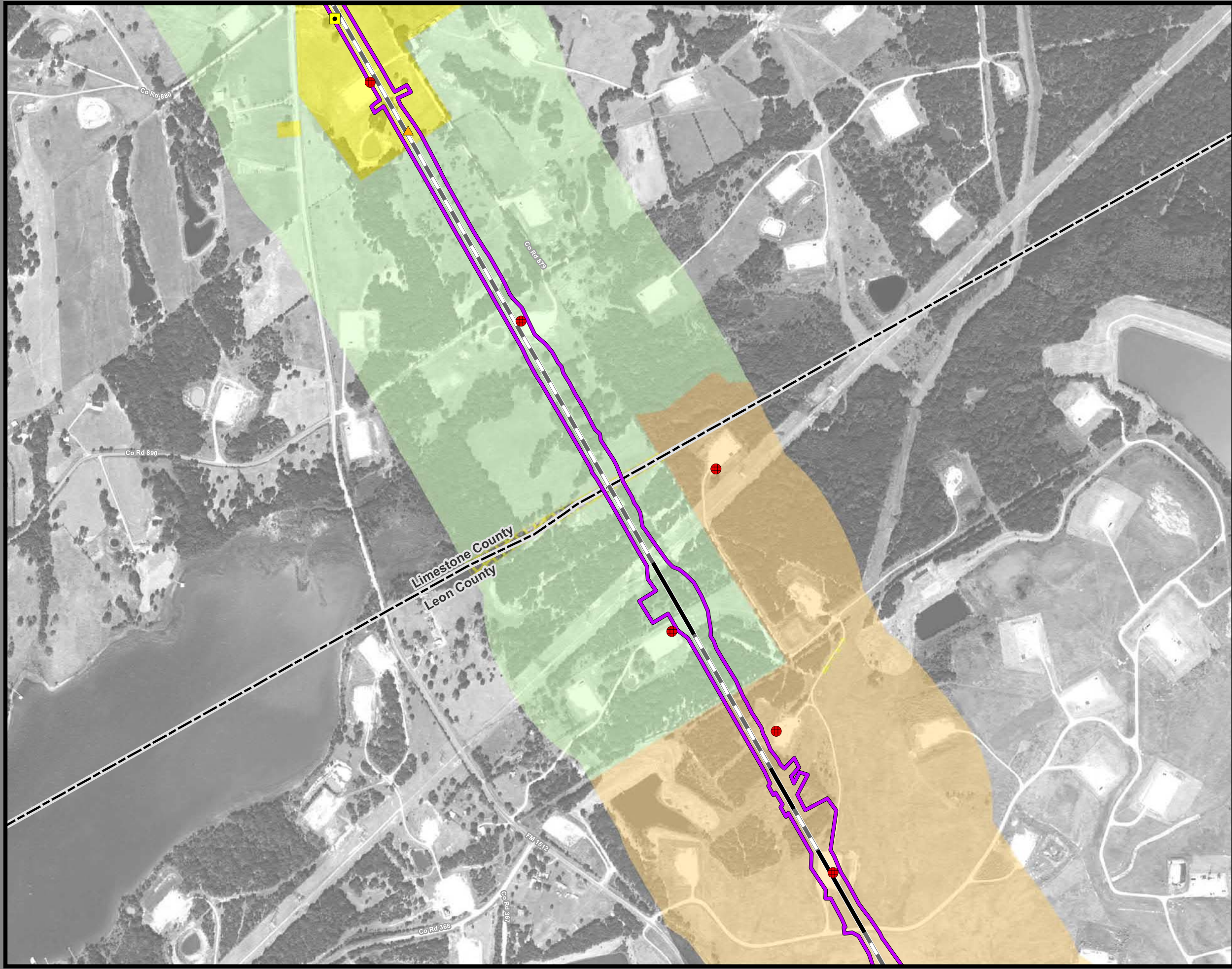
**Dallas to Houston
High-Speed Rail Project
Land Use
Segment 4
Sheet 172 of 257**

Legend

<p>Track Configuration</p> <ul style="list-style-type: none"> — Viaduct — Embankment — Cut <p>Limits of Disturbance</p> <ul style="list-style-type: none"> — Segment 1 — Segment 2A — Segment 2B — Segment 3A — Segment 3B — Segment 3C — Segment 4 — Segment 5 <p>Structures</p> <ul style="list-style-type: none"> ◆ Agriculture ▲ Barn / Shed ■ Commercial ■ Commercial within LOD ◆ Community Facility ◆ Community Facility within LOD ✱ Cultural Resources ● Oil / Gas ■ Residential ■ Residential within LOD ⊗ Transportation ○ Unknown Structure ⊕ Utility 	<p>Jurisdictional Boundaries</p> <ul style="list-style-type: none"> — County Boundary — City Boundary — USACE Bardwell Lake — Fort Boggy SP <p>Land Use</p> <ul style="list-style-type: none"> — Agriculture — Civic — Commercial — Forested Area — Industrial — Park — Residential — Rural — Transportation — Unclassified — Utility — Vacant — Water Feature
--	---

*Inaccuracies in the original county appraisal district property data may result in misalignment with aerial imagery.
 *Only structures within 200 feet of the LOD were evaluated for analysis purposes. Land use is only displayed within a quarter mile of the LOD.
Data Sources: County/City Boundaries - TxDOT 2013; Land Use - Respective County Appraisal Districts (2011, 2015, 2016), CLS (2017)
Aerial Imagery: USDA NAIP 2014





**Dallas to Houston
High-Speed Rail Project
Land Use
Segment 4
Sheet 173 of 257**

Legend

Track Configuration	Jurisdictional Boundaries
— Viaduct	▭ County Boundary
— Embankment	▭ City Boundary
— Cut	▭ USACE Bardwell Lake
Limits of Disturbance	▭ Fort Boggy SP
▭ Segment 1	Land Use
▭ Segment 2A	▭ Agriculture
▭ Segment 2B	▭ Civic
▭ Segment 3A	▭ Commercial
▭ Segment 3B	▭ Forested Area
▭ Segment 3C	▭ Industrial
▭ Segment 4	▭ Park
▭ Segment 5	▭ Residential
Structures	▭ Rural
◆ Agriculture	▭ Transportation
▲ Barn / Shed	▭ Unclassified
■ Commercial	▭ Utility
■ Commercial within LOD	▭ Vacant
◆ Community Facility	▭ Water Feature
◆ Community Facility within LOD	
✱ Cultural Resources	
● Oil / Gas	
■ Residential	
■ Residential within LOD	
⊗ Transportation	
○ Unknown Structure	
⊕ Utility	

*Inaccuracies in the original county appraisal district property data may result in misalignment with aerial imagery.
 *Only structures within 200 feet of the LOD were evaluated for analysis purposes. Land use is only displayed within a quarter mile of the LOD.
Data Sources: County/City Boundaries - TxDOT 2013; Land Use - Respective County Appraisal Districts (2011, 2015, 2016), CLS (2017)
Aerial Imagery: USDA NAIP 2014

