



Notes:

1. Infrastructure configuration shown represents Conceptual Engineering drawings in FDCE Report. Approximate limits shown for purposes of wildlife crossing considerations. More detail on infrastructure configurations, profile elevations, culvert locations, roadway crossings and other considerations provided on engineering drawings.
2. Areas shown as Restricted illustrates general limits where infrastructure configuration would restrict crossing of HSR ROW by wildlife, except for small animals identified in FDCE Report at culvert locations and designated Wildlife Crossing locations.
3. More detailed analysis of specific Wildlife Crossing locations and provisions will be developed based upon results of environmental analysis and coordination with relevant agencies, regulatory bodies, and project stakeholders.
4. Designated Urban Regions do not require Wildlife Crossings due to the low potential for wildlife in the area.
5. See FDCE Report for more information.

NHD Streams	Wildlife Movement
Segment Breaklines	Potential Wildlife Crossing
County Boundaries	Unrestricted
Stations and Maintenance Facilities	Restricted

0 0.25 0.5 1 Miles
NAD 1983 StatePlane Texas Central FIPS 4203 Feet

ARUP
 Arup Texas, Inc.
 10370 Richmond Ave., Suite 475
 Houston, Texas 77042 USA
 Tel (713) 7832787 Fax (713) 343 1487
 www.arup.com Texas Registered Engineering Firm: F-1990

FRESE NICHOLS
 2711 North Haskell Ave., Suite 3300
 Dallas, Texas 75204
 Tel (214) 217 2200 Fax (214) 217 2201
 www.freese.com Texas Registered Engineering Firm: F-2144

1601 Elm Street, Suite 4343, Dallas, Texas 75201

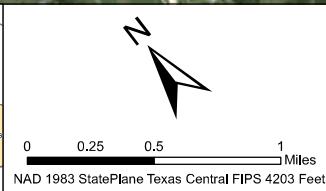
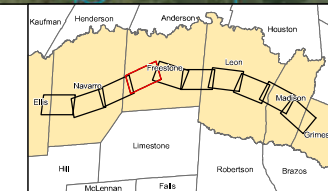
**IH Segment THSR
 Potential Wildlife Crossings
 Sheet 16 of 38**

File Name 45_WildlifeCrossings_Alt2.mxd	Date 9/15/2017
Status Final Draft	Drawn By MK
Job No 234180-00	Rev P1
Drawing WLC-00-4018	

- Notes:
1. Infrastructure configuration shown represents Conceptual Engineering drawings in FDCE Report. Approximate limits shown for purposes of wildlife crossing considerations. More detail on infrastructure configurations, profile elevations, culvert locations, roadway crossings and other considerations provided on engineering drawings.
 2. Areas shown as Restricted illustrates general limits where infrastructure configuration would restrict crossing of HSR ROW by wildlife, except for small animals identified in FDCE Report at culvert locations and designated Wildlife Crossing locations.
 3. More detailed analysis of specific Wildlife Crossing locations and provisions will be developed based upon results of environmental analysis and coordination with relevant agencies, regulatory bodies, and project stakeholders.
 4. Designated Urban Regions do not require Wildlife Crossings due to the low potential for wildlife in the area.
 5. See FDCE Report for more information.



NHD Streams	Wildlife Movement
Segment Breaklines	Potential Wildlife Crossing
County Boundaries	Unrestricted
Stations and Maintenance Facilities	Restricted



Arup Texas, Inc.
10370 Richmond Ave., Suite 475
Houston, Texas 77042 USA
Tel (713) 7832787 Fax (713) 343 1487
www.arup.com
Texas Registered Engineering Firm: F-1990

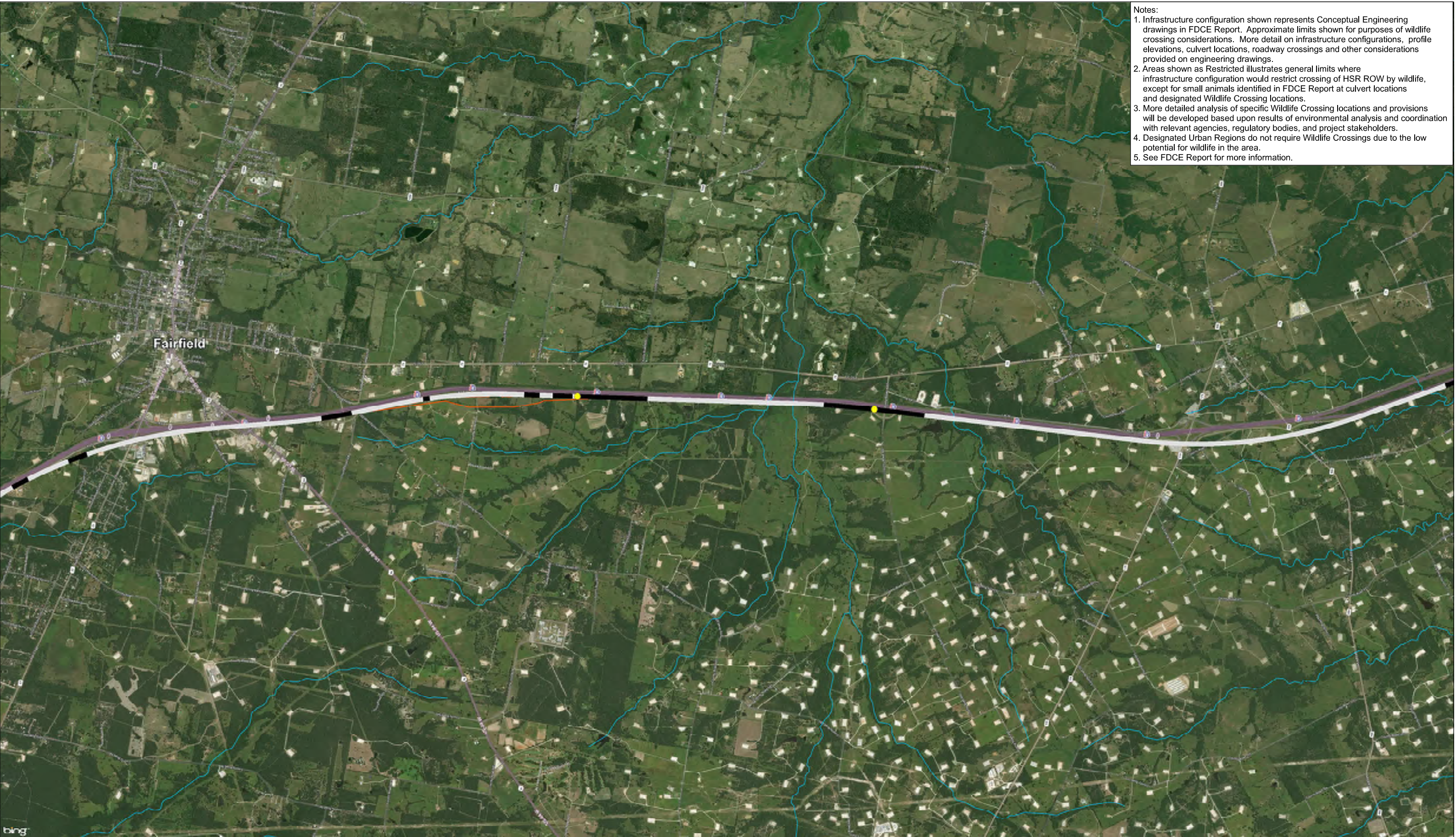
2711 North Haskell Ave., Suite 3300
Dallas, Texas 75204
Tel (214) 217 2200 Fax (214) 217 2201
www.frese.com
Texas Registered Engineering Firm: F-2144

1601 Elm Street, Suite 4343, Dallas, Texas 75201

IH Segment
THSR
Potential Wildlife
Crossings
Sheet 17 of 38

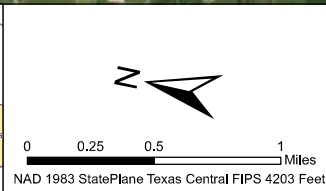
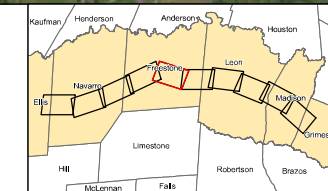
File Name 45_WildlifeCrossings_Alt2.mxd	Date 9/15/2017
Status Final Draft	Drawn By MK
Job No 234180-00	Drawing WLC-00-4019
	Rev P1

- Notes:
1. Infrastructure configuration shown represents Conceptual Engineering drawings in FDCE Report. Approximate limits shown for purposes of wildlife crossing considerations. More detail on infrastructure configurations, profile elevations, culvert locations, roadway crossings and other considerations provided on engineering drawings.
 2. Areas shown as Restricted illustrates general limits where infrastructure configuration would restrict crossing of HSR ROW by wildlife, except for small animals identified in FDCE Report at culvert locations and designated Wildlife Crossing locations.
 3. More detailed analysis of specific Wildlife Crossing locations and provisions will be developed based upon results of environmental analysis and coordination with relevant agencies, regulatory bodies, and project stakeholders.
 4. Designated Urban Regions do not require Wildlife Crossings due to the low potential for wildlife in the area.
 5. See FDCE Report for more information.



NHD Streams
 Segment Breaklines
 County Boundaries
 Stations and Maintenance Facilities

Wildlife Movement
 Potential Wildlife Crossing
 Unrestricted
 Restricted



ARUP
 Arup Texas, Inc.
 10370 Richmond Ave., Suite 475
 Houston, Texas 77042 USA
 Tel (713) 7832787 Fax (713) 343 1487
 www.arup.com Texas Registered Engineering Firm: F-1990

FRESE NICHOLS
 2711 North Haskell Ave., Suite 3300
 Dallas, Texas 75204
 Tel (214) 217 2200 Fax (214) 217 2201
 www.frees.com Texas Registered Engineering Firm: F-2144

1601 Elm Street, Suite 4343, Dallas, Texas 75201

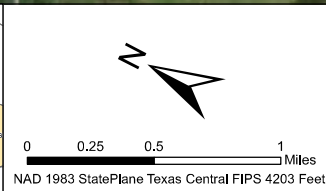
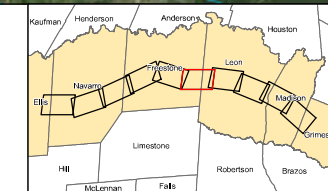
IH Segment
 THSR
 Potential Wildlife
 Crossings
 Sheet 18 of 38

File Name 45_WildlifeCrossings_Alt2.mxd	Date 9/15/2017
Status Final Draft	Drawn By MK
Job No 234180-00	Drawing WLC-00-4020
	Rev P1

- Notes:
1. Infrastructure configuration shown represents Conceptual Engineering drawings in FDCE Report. Approximate limits shown for purposes of wildlife crossing considerations. More detail on infrastructure configurations, profile elevations, culvert locations, roadway crossings and other considerations provided on engineering drawings.
 2. Areas shown as Restricted illustrates general limits where infrastructure configuration would restrict crossing of HSR ROW by wildlife, except for small animals identified in FDCE Report at culvert locations and designated Wildlife Crossing locations.
 3. More detailed analysis of specific Wildlife Crossing locations and provisions will be developed based upon results of environmental analysis and coordination with relevant agencies, regulatory bodies, and project stakeholders.
 4. Designated Urban Regions do not require Wildlife Crossings due to the low potential for wildlife in the area.
 5. See FDCE Report for more information.



NHD Streams	Unrestricted	Padina, 1-8% slope
Segment Breaklines	Restricted	Padina, 8-18% slope
County Boundaries	Sandy Soils/Houston Toad Potential	Pickton, 1-8% slope
Stations and Maintenance Facilities	Arenosa, 1-8% slope	Picton, 8-15% slope
Wildlife Movement	Bienville, 0-3% slope	
Potential Wildlife Crossing	Flo, 1-8% slope	



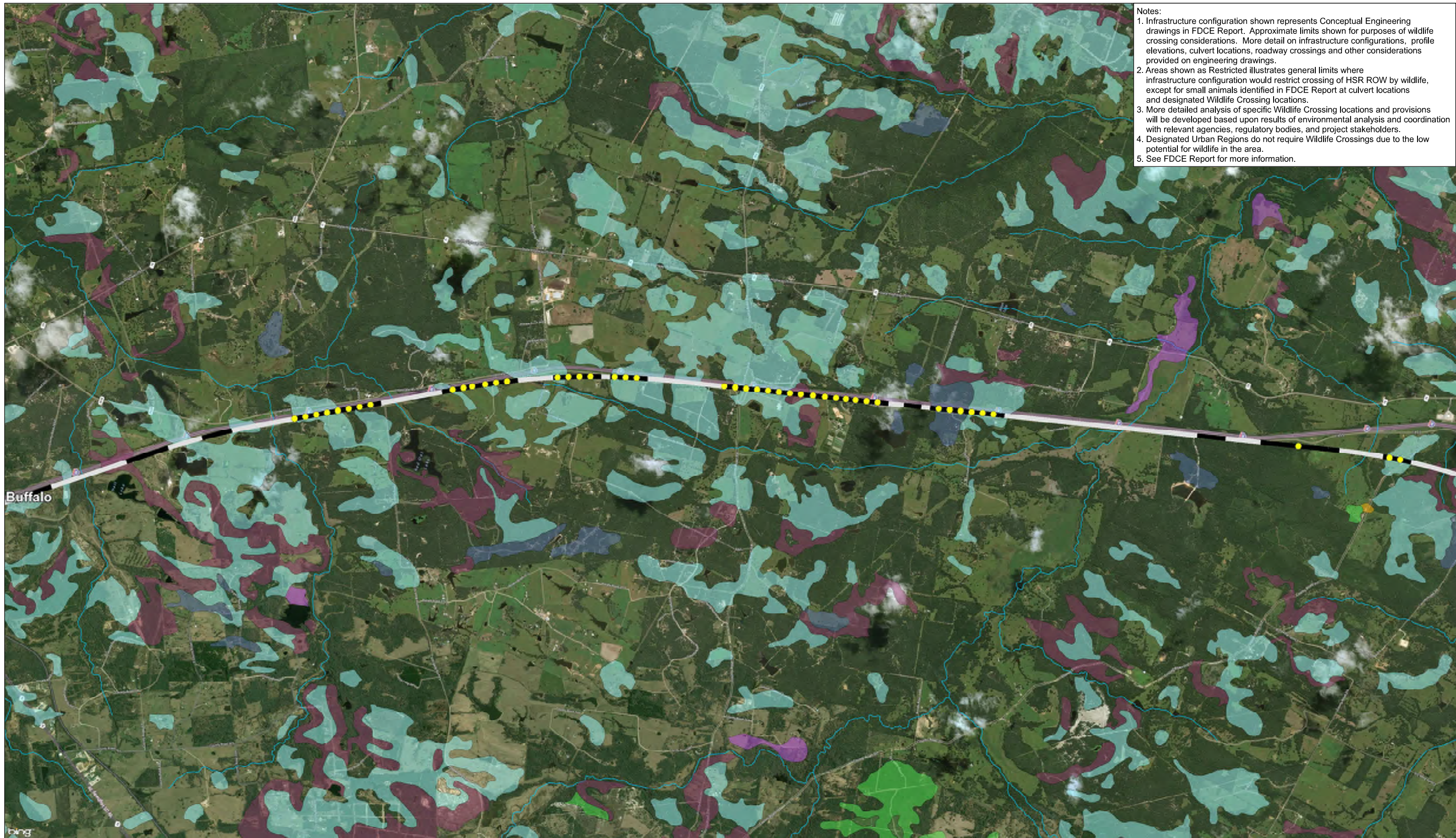
ARUP
 Arup Texas, Inc.
 10370 Richmond Ave., Suite 475
 Houston, Texas 77042 USA
 Tel (713) 7832787 Fax (713) 343 1487
 www.arup.com Texas Registered Engineering Firm: F-1990

FRESE NICHOLS
 2711 North Haskell Ave., Suite 3300
 Dallas, Texas 75204
 Tel (214) 217 2200 Fax (214) 217 2201
 www.frees.com Texas Registered Engineering Firm: F-2144

TEXAS CENTRAL
 1601 Elm Street, Suite 4343, Dallas, Texas 75201

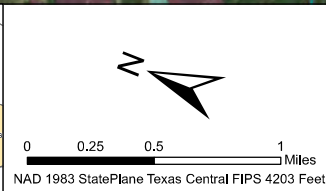
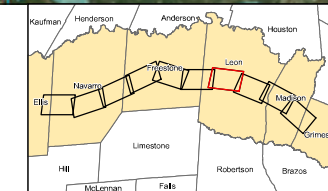
IH Segment
 THSR
 Potential Wildlife
 Crossings
 Sheet 19 of 38

File Name 45_WildlifeCrossings_Alt2.mxd	Date 9/15/2017
Status Final Draft	Drawn By MK
Job No 234180-00	Drawing WLC-00-4021
	Rev P1



- Notes:
1. Infrastructure configuration shown represents Conceptual Engineering drawings in FDCE Report. Approximate limits shown for purposes of wildlife crossing considerations. More detail on infrastructure configurations, profile elevations, culvert locations, roadway crossings and other considerations provided on engineering drawings.
 2. Areas shown as Restricted illustrates general limits where infrastructure configuration would restrict crossing of HSR ROW by wildlife, except for small animals identified in FDCE Report at culvert locations and designated Wildlife Crossing locations.
 3. More detailed analysis of specific Wildlife Crossing locations and provisions will be developed based upon results of environmental analysis and coordination with relevant agencies, regulatory bodies, and project stakeholders.
 4. Designated Urban Regions do not require Wildlife Crossings due to the low potential for wildlife in the area.
 5. See FDCE Report for more information.

NHD Streams	Unrestricted	Padina, 1-8% slope
Segment Breaklines	Restricted	Padina, 8-18% slope
County Boundaries	Sandy Soils/Houston Toad Potential	Pickton, 1-8% slope
Stations and Maintenance Facilities	Arenosa, 1-8% slope	Picton, 8-15% slope
Wildlife Movement	Bienville, 0-3% slope	
Potential Wildlife Crossing	Flo, 1-8% slope	



ARUP
 Arup Texas, Inc.
 10370 Richmond Ave., Suite 475
 Houston, Texas 77042 USA
 Tel (713) 7832787 Fax (713) 343 1487
 www.arup.com Texas Registered Engineering Firm: F-1900

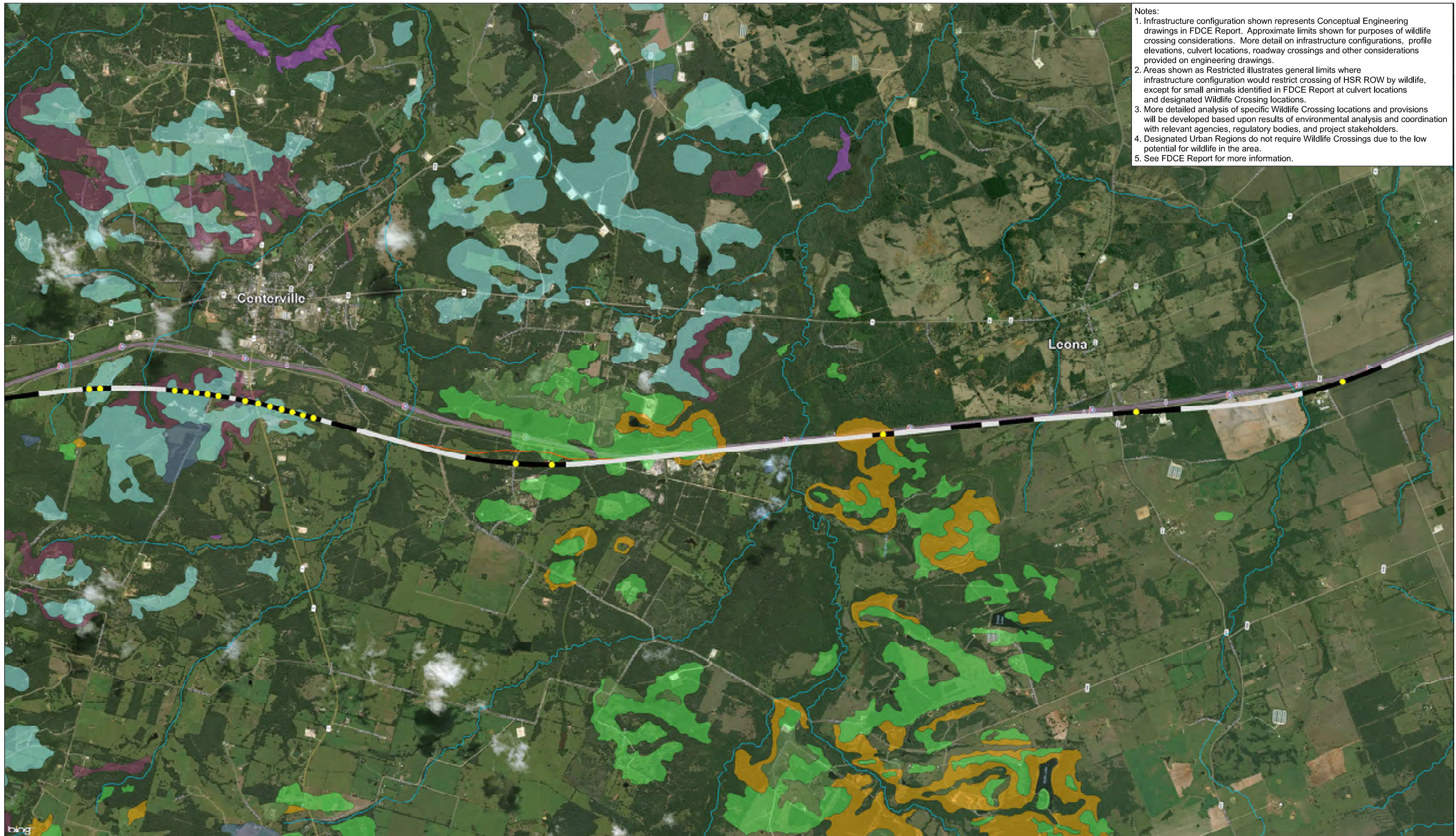
FRESE NICHOLS
 2711 North Haskell Ave., Suite 3300
 Dallas, Texas 75204
 Tel (214) 217 2200 Fax (214) 217 2201
 www.frese.com Texas Registered Engineering Firm: F-2144

1601 Elm Street, Suite 4343, Dallas, Texas 75201

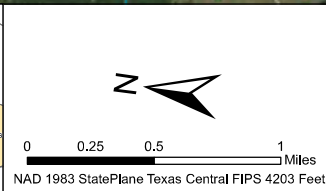
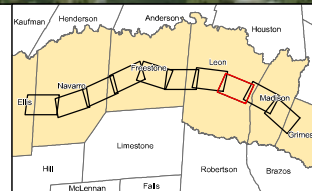
IH Segment
 THSR
 Potential Wildlife
 Crossings
 Sheet 20 of 38

File Name 45_WildlifeCrossings_Alt2.mxd	Date 9/15/2017
Status Final Draft	Drawn By MK
Job No 234180-00	Drawing WLC-00-4022
	Rev P1

- Notes:
1. Infrastructure configuration shown represents Conceptual Engineering drawings in FDCE Report. Approximate limits shown for purposes of wildlife crossing considerations. More detail on infrastructure configurations, profile elevations, culvert locations, roadway crossings and other considerations provided on engineering drawings.
 2. Areas shown as Restricted illustrates general limits where infrastructure configuration would restrict crossing of HSR ROW by wildlife, except for small animals identified in FDCE Report at culvert locations and designated Wildlife Crossing locations.
 3. More detailed analysis of specific Wildlife Crossing locations and provisions will be developed based upon results of environmental analysis and coordination with relevant agencies, regulatory bodies, and project stakeholders.
 4. Designated Urban Regions do not require Wildlife Crossings due to the low potential for wildlife in the area.
 5. See FDCE Report for more information.



NHD Streams	Unrestricted	Padina, 1-8% slope
Segment Breaklines	Restricted	Padina, 8-18% slope
County Boundaries	Sandy Soils/Houston Toad Potential	Pickton, 1-8% slope
Stations and Maintenance Facilities	Arenosa, 1-8% slope	Picton, 8-15% slope
Wildlife Movement	Bienville, 0-3% slope	
Potential Wildlife Crossing	Flo, 1-8% slope	



ARUP

Arup Texas, Inc.
10370 Richmond Ave., Suite 475
Houston, Texas 77042 USA
Tel (713) 7832787 Fax (713) 343 1487
www.arup.com
Texas Registered Engineering Firm: F-1990

FREESE NICHOLS

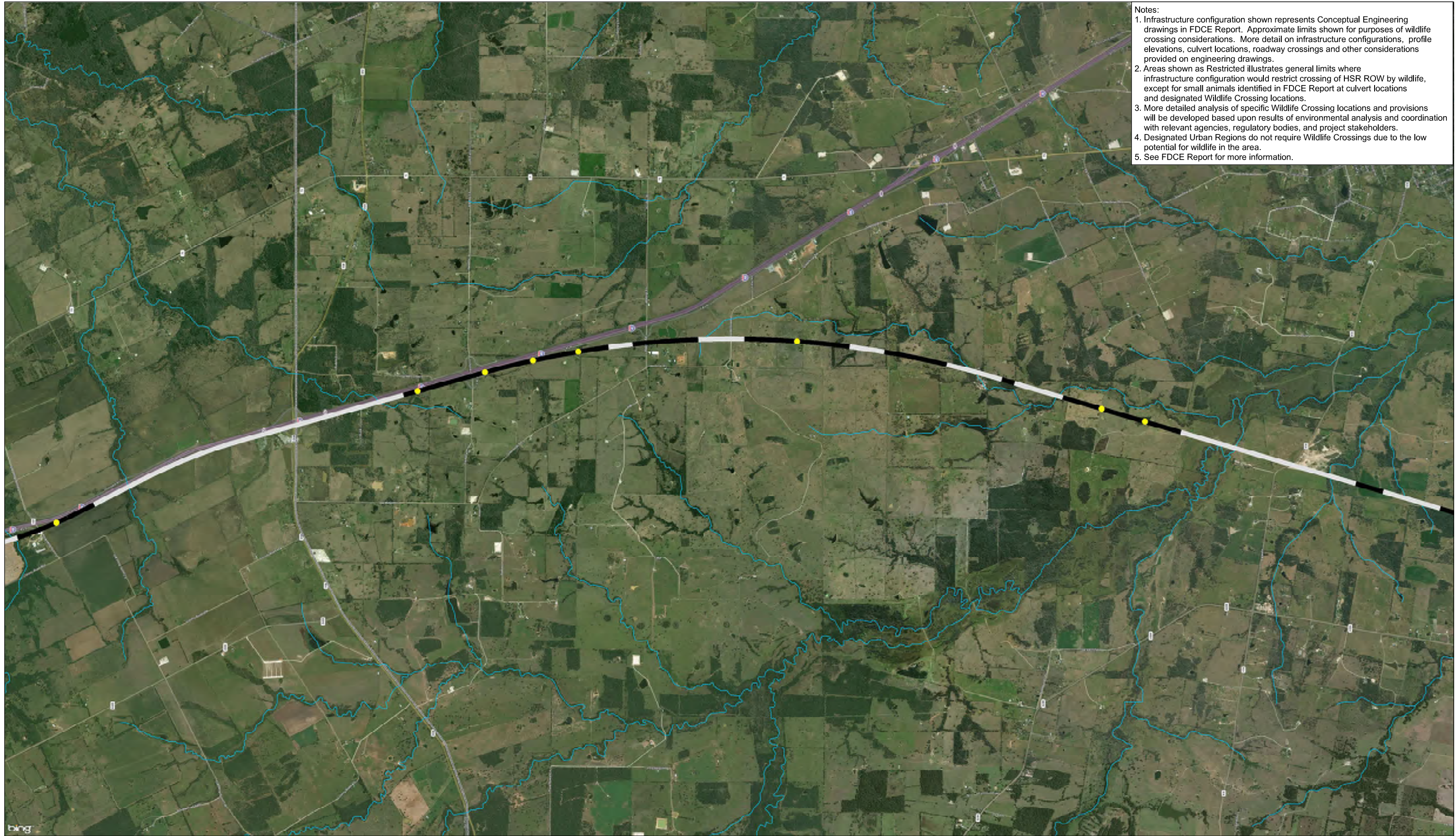
2711 North Haskell Ave., Suite 3300
Dallas, Texas 75204
Tel (214) 217 2200 Fax (214) 217 2201
www.fn.com
Texas Registered Engineering Firm: F-2144

1601 Elm Street, Suite 4343, Dallas, Texas 75201

IH Segment
THSR
Potential Wildlife
Crossings
Sheet 21 of 38

File Name 45_WildlifeCrossings_Alt2.mxd	Date 9/15/2017
Status Final Draft	Drawn By MK
Job No 234180-00	Drawing WLC-00-4023
	Rev P1

- Notes:
1. Infrastructure configuration shown represents Conceptual Engineering drawings in FDCE Report. Approximate limits shown for purposes of wildlife crossing considerations. More detail on infrastructure configurations, profile elevations, culvert locations, roadway crossings and other considerations provided on engineering drawings.
 2. Areas shown as Restricted illustrates general limits where infrastructure configuration would restrict crossing of HSR ROW by wildlife, except for small animals identified in FDCE Report at culvert locations and designated Wildlife Crossing locations.
 3. More detailed analysis of specific Wildlife Crossing locations and provisions will be developed based upon results of environmental analysis and coordination with relevant agencies, regulatory bodies, and project stakeholders.
 4. Designated Urban Regions do not require Wildlife Crossings due to the low potential for wildlife in the area.
 5. See FDCE Report for more information.

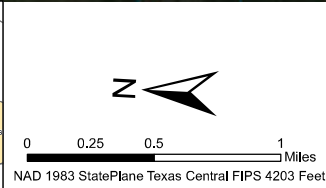
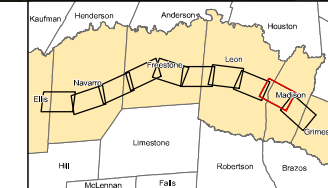


Legend

- NHD Streams
- Segment Breaklines
- County Boundaries
- Stations and Maintenance Facilities

Wildlife Movement

- Potential Wildlife Crossing
- Unrestricted
- Restricted



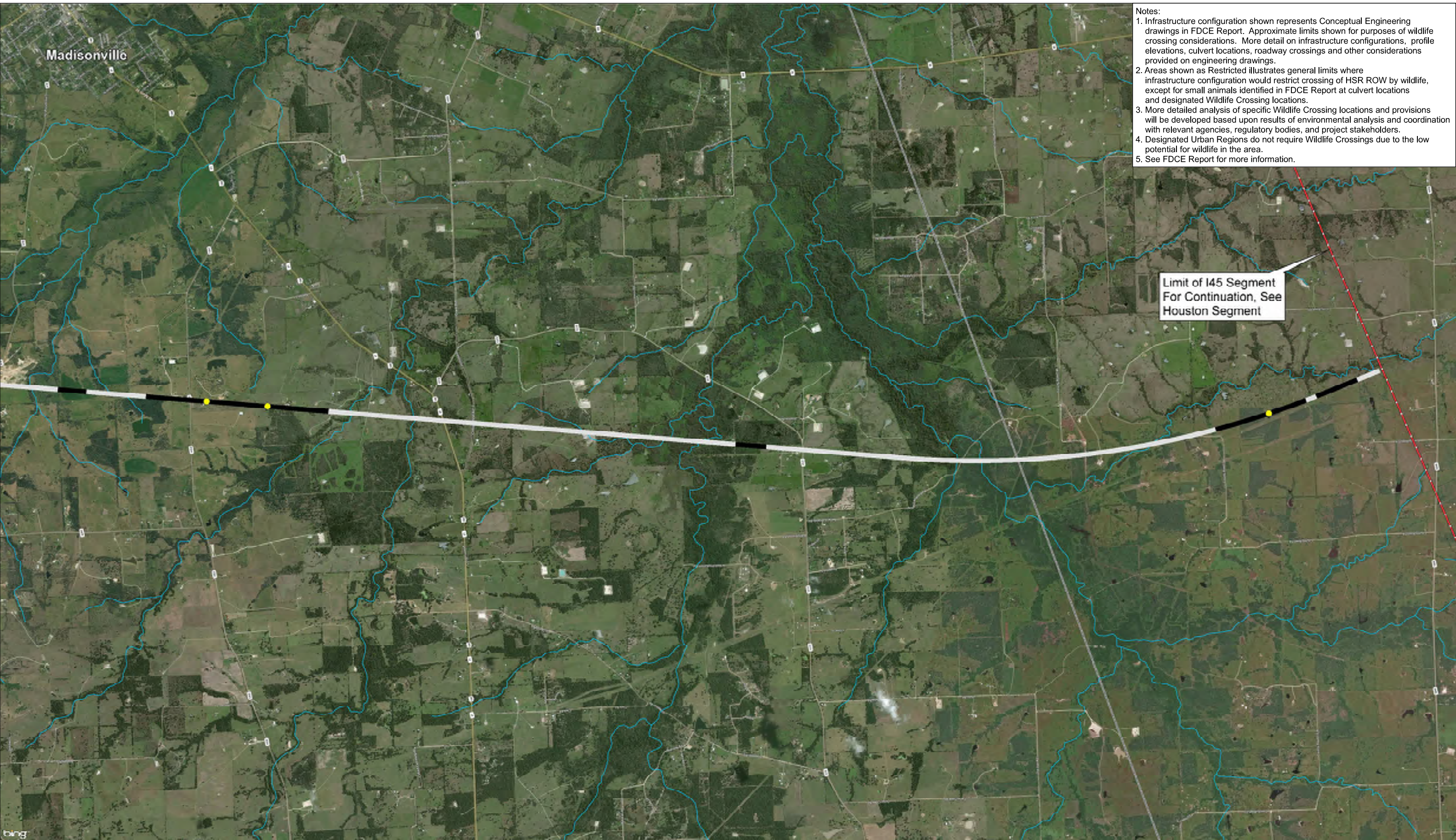
ARUP
 Arup Texas, Inc.
 10370 Richmond Ave., Suite 475
 Houston, Texas 77042 USA
 Tel (713) 7832787 Fax (713) 343 1487
 www.arup.com Texas Registered Engineering Firm: F-1990

FRESE NICHOLS
 2711 North Haskell Ave., Suite 3300
 Dallas, Texas 75204
 Tel (214) 217 2200 Fax (214) 217 2201
 www.freese.com Texas Registered Engineering Firm: F-2144

TEXAS CENTRAL
 1601 Elm Street, Suite 4343, Dallas, Texas 75201

IH Segment THSR
 Potential Wildlife Crossings
 Sheet 22 of 38

File Name 45_WildlifeCrossings_Alt2.mxd	Date 9/15/2017
Status Final Draft	Drawn By MK
Job No 234180-00	Drawing WLC-00-4024
	Rev P1



- Notes:
1. Infrastructure configuration shown represents Conceptual Engineering drawings in FDCE Report. Approximate limits shown for purposes of wildlife crossing considerations. More detail on infrastructure configurations, profile elevations, culvert locations, roadway crossings and other considerations provided on engineering drawings.
 2. Areas shown as Restricted illustrates general limits where infrastructure configuration would restrict crossing of HSR ROW by wildlife, except for small animals identified in FDCE Report at culvert locations and designated Wildlife Crossing locations.
 3. More detailed analysis of specific Wildlife Crossing locations and provisions will be developed based upon results of environmental analysis and coordination with relevant agencies, regulatory bodies, and project stakeholders.
 4. Designated Urban Regions do not require Wildlife Crossings due to the low potential for wildlife in the area.
 5. See FDCE Report for more information.

Limit of I45 Segment
For Continuation, See
Houston Segment

NHD Streams
 NHD Streams

Segment Breaklines
 Segment Breaklines

County Boundaries
 County Boundaries

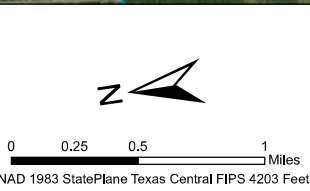
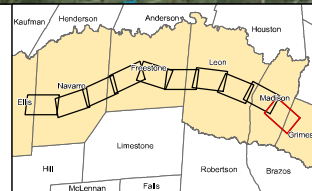
Stations and Maintenance Facilities
 Stations and Maintenance Facilities

Wildlife Movement

Potential Wildlife Crossing

Unrestricted

Restricted



ARUP
 Arup Texas, Inc.
 12370 Richmond Ave., Suite 475
 Houston, Texas 77042 USA
 Tel (713) 7832787 Fax (713) 343 1487
 www.arup.com Texas Registered Engineering Firm: F-1990

FRESE NICHOLS
 2711 North Haskell Ave., Suite 3300
 Dallas, Texas 75204
 Tel (214) 217 2200 Fax (214) 217 2201
 www.frees.com Texas Registered Engineering Firm: F-2144

TEXAS CENTRAL

 1601 Elm Street, Suite 4343, Dallas, Texas 75201

IH Segment
THSR
Potential Wildlife
Crossings
Sheet 23 of 38

File Name 45_WildlifeCrossings_Alt2.mxd	Date 9/15/2017
Status Final Draft	Drawn By MK
Job No 234180-00	Drawing WLC-00-4025
	Rev P1

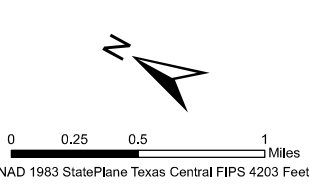


Limit of West of Teague Segment
For Continuation, See
Navarro East and Navarro
West Segments

- Notes:
1. Infrastructure configuration shown represents Conceptual Engineering drawings in FDCE Report. Approximate limits shown for purposes of wildlife crossing considerations. More detail on infrastructure configurations, profile elevations, culvert locations, roadway crossings and other considerations provided on engineering drawings.
 2. Areas shown as Restricted illustrates general limits where infrastructure configuration would restrict crossing of HSR ROW by wildlife, except for small animals identified in FDCE Report at culvert locations and designated Wildlife Crossing locations.
 3. More detailed analysis of specific Wildlife Crossing locations and provisions will be developed based upon results of environmental analysis and coordination with relevant agencies, regulatory bodies, and project stakeholders.
 4. Designated Urban Regions do not require Wildlife Crossings due to the low potential for wildlife in the area.
 5. See FDCE Report for more information.

- NHD Streams
- Segment Breaklines
- County Boundaries
- Stations and Maintenance Facilities

- Wildlife Movement**
- Potential Wildlife Crossing
 - Unrestricted
 - Restricted



ARUP
 Arup Texas, Inc.
 10370 Richmond Ave., Suite 475
 Houston, Texas 77042 USA
 Tel (713) 7832787 Fax (713) 343 1487
 www.arup.com
 Texas Registered Engineering Firm: F-1990

FRESE NICHOLS
 2711 North Haskell Ave., Suite 3300
 Dallas, Texas 75204
 Tel (214) 217 2200 Fax (214) 217 2201
 www.freese.com
 Texas Registered Engineering Firm: F-2144

TEXAS CENTRAL
 1601 Elm Street, Suite 4343, Dallas, Texas 75201

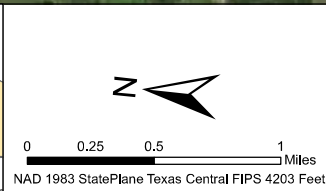
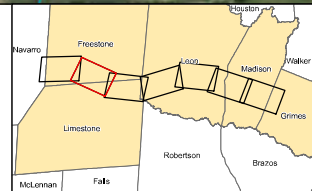
WT Segment
 THSR
 Potential Wildlife
 Crossings
 Sheet 24 of 38

File Name WestTeague_WildlifeCrossings.mxd	Date 9/15/2017
Status Final Draft	Drawn By MK
Job No 234180-00	Drawing WLC-00-4026
	Rev P1



- Notes:
1. Infrastructure configuration shown represents Conceptual Engineering drawings in FDCE Report. Approximate limits shown for purposes of wildlife crossing considerations. More detail on infrastructure configurations, profile elevations, culvert locations, roadway crossings and other considerations provided on engineering drawings.
 2. Areas shown as Restricted illustrates general limits where infrastructure configuration would restrict crossing of HSR ROW by wildlife, except for small animals identified in FDCE Report at culvert locations and designated Wildlife Crossing locations.
 3. More detailed analysis of specific Wildlife Crossing locations and provisions will be developed based upon results of environmental analysis and coordination with relevant agencies, regulatory bodies, and project stakeholders.
 4. Designated Urban Regions do not require Wildlife Crossings due to the low potential for wildlife in the area.
 5. See FDCE Report for more information.

NHD Streams	Wildlife Movement
Segment Breaklines	Potential Wildlife Crossing
County Boundaries	Unrestricted
Stations and Maintenance Facilities	Restricted



ARUP

Arup Texas, Inc.
12370 Richmond Ave., Suite 475
Houston, Texas 77042 USA
Tel (713) 7832787 Fax (713) 343 1487
www.arup.com
Texas Registered Engineering Firm: F-1990

FRESE NICHOLS

2711 North Haskell Ave., Suite 3300
Dallas, Texas 75204
Tel (214) 217 2200 Fax (214) 217 2201
www.freesenichols.com
Texas Registered Engineering Firm: F-2144

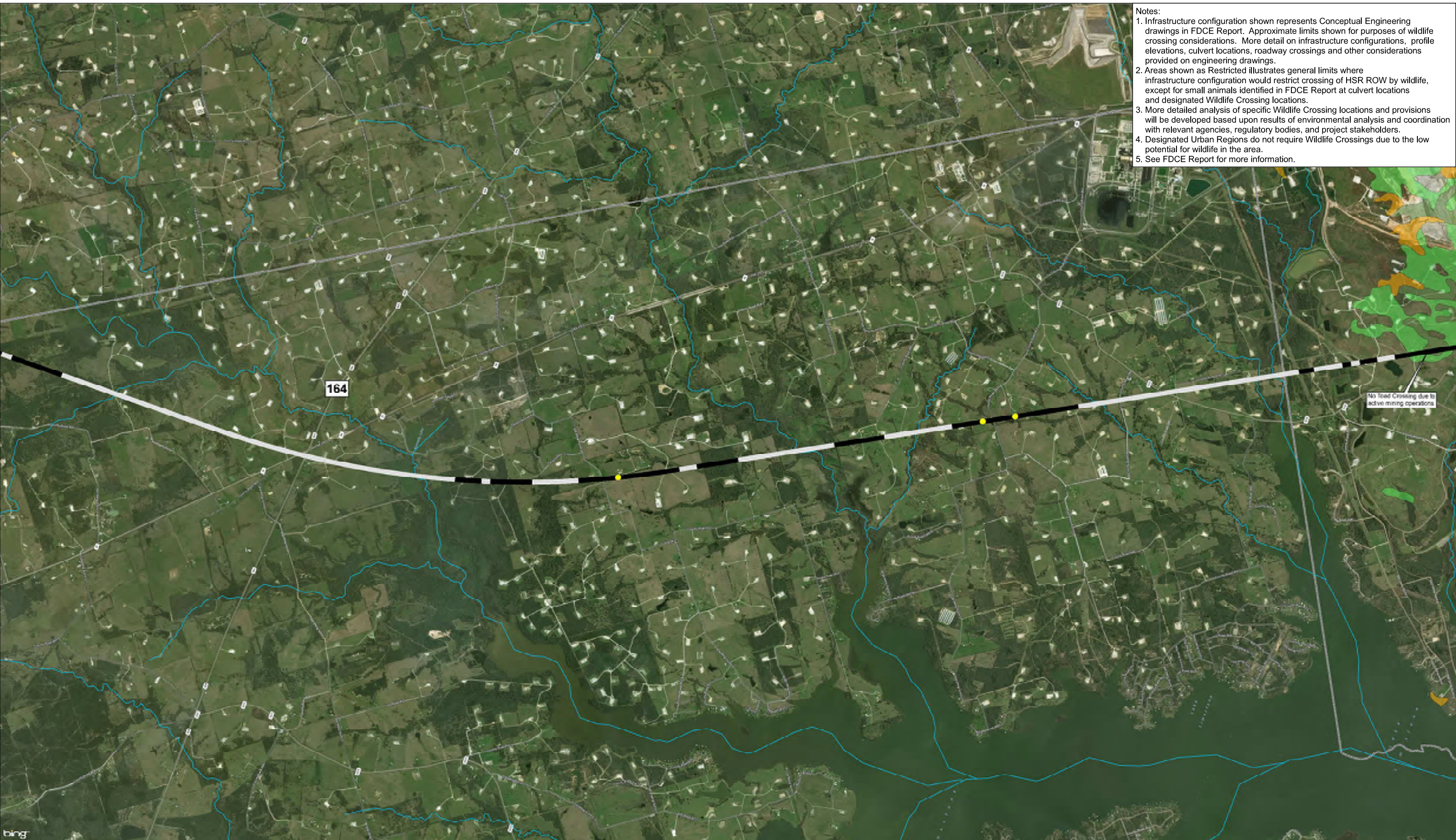
TEXAS CENTRAL

1601 Elm Street, Suite 4343, Dallas, Texas 75201

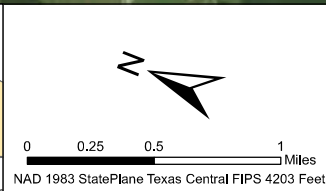
WT Segment THSR Potential Wildlife Crossings
Sheet 25 of 38

File Name WestTeague_WildlifeCrossings.mxd	Date 9/15/2017
Status Final Draft	Drawn By MK
Job No 234180-00	Rev P1
Drawing WLC-00-4027	

- Notes:
1. Infrastructure configuration shown represents Conceptual Engineering drawings in FDCE Report. Approximate limits shown for purposes of wildlife crossing considerations. More detail on infrastructure configurations, profile elevations, culvert locations, roadway crossings and other considerations provided on engineering drawings.
 2. Areas shown as Restricted illustrates general limits where infrastructure configuration would restrict crossing of HSR ROW by wildlife, except for small animals identified in FDCE Report at culvert locations and designated Wildlife Crossing locations.
 3. More detailed analysis of specific Wildlife Crossing locations and provisions will be developed based upon results of environmental analysis and coordination with relevant agencies, regulatory bodies, and project stakeholders.
 4. Designated Urban Regions do not require Wildlife Crossings due to the low potential for wildlife in the area.
 5. See FDCE Report for more information.



NHD Streams	Wildlife Movement	Sandy Soils/Houston Toad Potential
Segment Breaklines	Potential Wildlife Crossing	Arenosa, 1-8% slope
County Boundaries	Unrestricted	Padina, 1-8% slope
Stations and Maintenance Facilities	Restricted	Padina, 8-18% slope



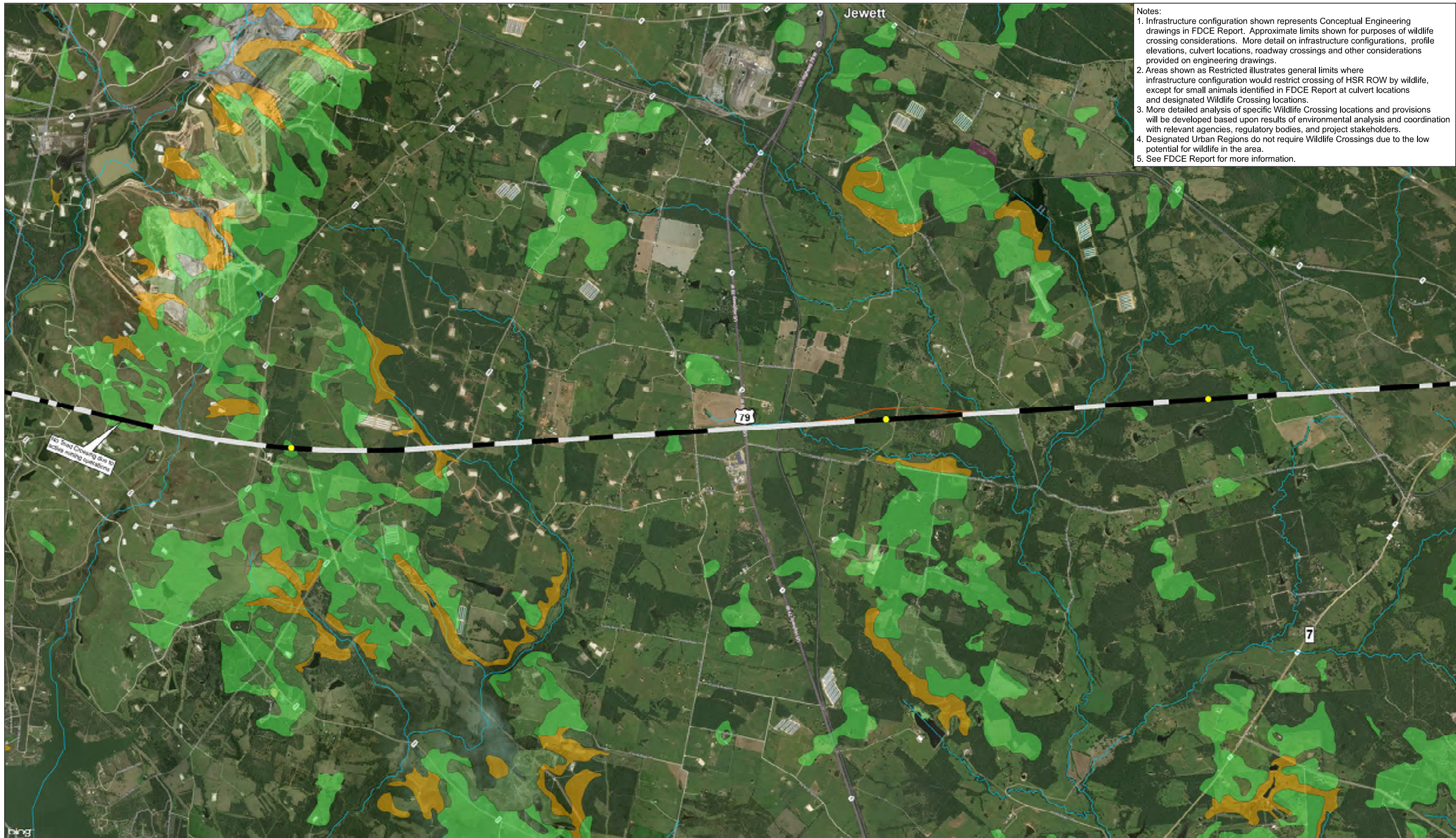
ARUP
 Arup Texas, Inc.
 10370 Richmond Ave., Suite 475
 Houston, Texas 77042 USA
 Tel (713) 7832787 Fax (713) 343 1487
 www.arup.com Texas Registered Engineering Firm: F-1990

FRESE NICHOLS
 2711 North Haskell Ave., Suite 3300
 Dallas, Texas 75204
 Tel (214) 217 2200 Fax (214) 217 2201
 www.freesenichols.com Texas Registered Engineering Firm: F-2144

TEXAS CENTRAL
 1601 Elm Street, Suite 4343, Dallas, Texas 75201

WT Segment THSR Potential Wildlife Crossings
 Sheet 26 of 38

File Name WestTeague_WildlifeCrossings.mxd	Date 9/15/2017
Status Final Draft	Drawn By MK
Job No 234180-00	Drawing WLC-00-4028
	Rev P1



- Notes:
1. Infrastructure configuration shown represents Conceptual Engineering drawings in FDCE Report. Approximate limits shown for purposes of wildlife crossing considerations. More detail on infrastructure configurations, profile elevations, culvert locations, roadway crossings and other considerations provided on engineering drawings.
 2. Areas shown as Restricted illustrates general limits where infrastructure configuration would restrict crossing of HSR ROW by wildlife, except for small animals identified in FDCE Report at culvert locations and designated Wildlife Crossing locations.
 3. More detailed analysis of specific Wildlife Crossing locations and provisions will be developed based upon results of environmental analysis and coordination with relevant agencies, regulatory bodies, and project stakeholders.
 4. Designated Urban Regions do not require Wildlife Crossings due to the low potential for wildlife in the area.
 5. See FDCE Report for more information.

NHD Streams
 NHD Streams

Segment Breaklines
 Segment Breaklines

County Boundaries
 County Boundaries

Stations and Maintenance Facilities
 Stations and Maintenance Facilities

Wildlife Movement

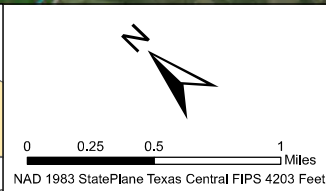
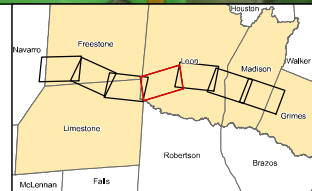
- Potential Wildlife Crossing

Unrestricted
 Unrestricted

Restricted
 Restricted

Sandy Soils/Houston Toad Potential

- Arenosa, 1-8% slope
- Padina, 1-8% slope
- Padina, 8-18% slope
- Picton, 8-15% slope
- Flo, 1-8% slope



ARUP
 Arup Texas, Inc.
 10370 Richmond Ave., Suite 475
 Houston, Texas 77042 USA
 Tel (713) 7832787 Fax (713) 343 1487
 www.arup.com
 Texas Registered Engineering Firm: F-1990

FRESE NICHOLS
 2711 North Haskell Ave., Suite 3300
 Dallas, Texas 75204
 Tel (214) 217 2200 Fax (214) 217 2201
 www.freese.com
 Texas Registered Engineering Firm: F-2144

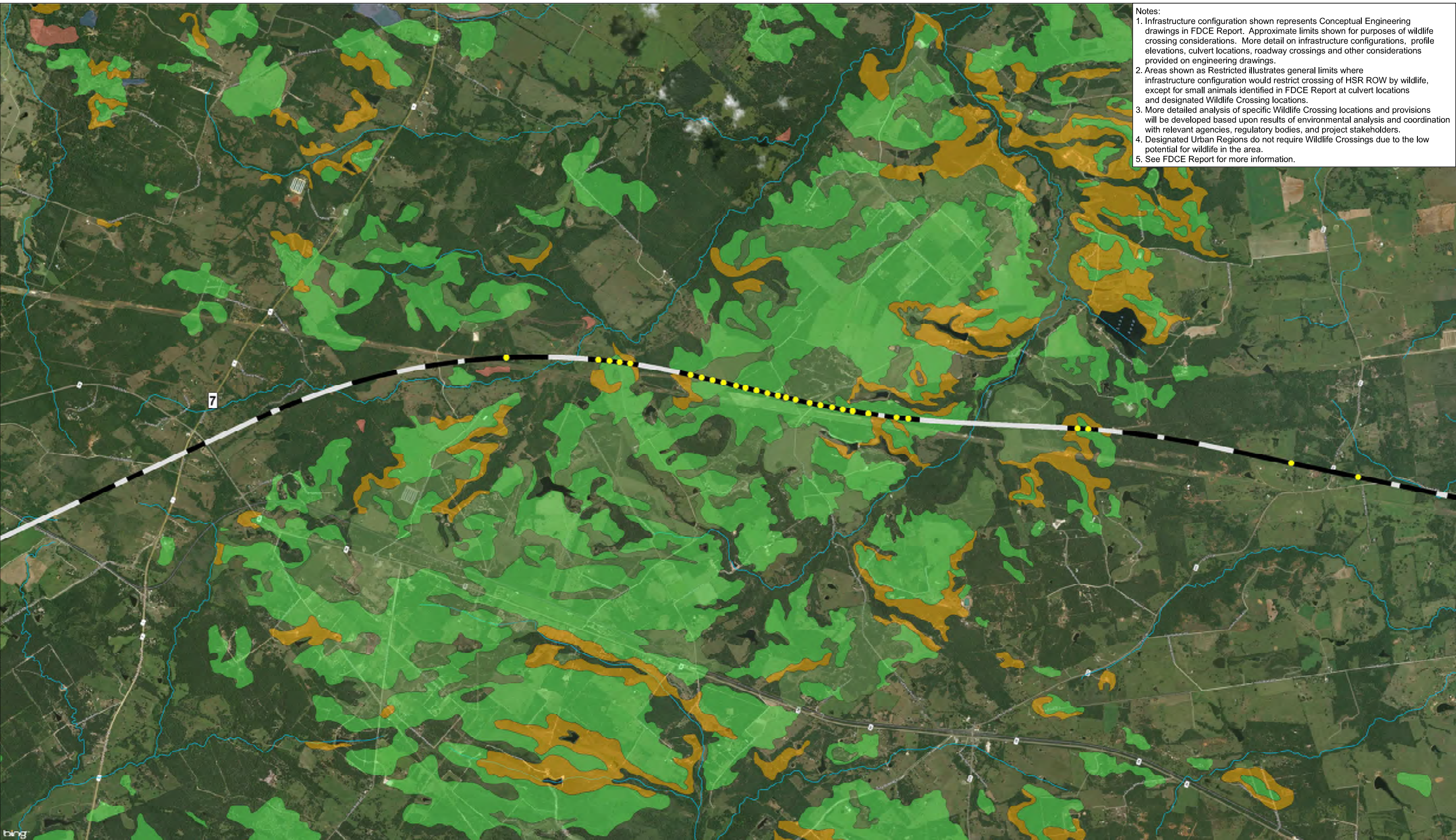
TEXAS CENTRAL
 1601 Elm Street, Suite 4343, Dallas, Texas 75201

**WT Segment THSR
 Potential Wildlife Crossings
 Sheet 27 of 38**

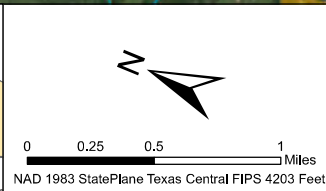
File Name WestTeague_WildlifeCrossings.mxd	Date 9/15/2017
Status Final Draft	Drawn By MK
Job No 234180-00	Drawing WLC-00-4029
	Rev P1

Notes:

1. Infrastructure configuration shown represents Conceptual Engineering drawings in FDCE Report. Approximate limits shown for purposes of wildlife crossing considerations. More detail on infrastructure configurations, profile elevations, culvert locations, roadway crossings and other considerations provided on engineering drawings.
2. Areas shown as Restricted illustrates general limits where infrastructure configuration would restrict crossing of HSR ROW by wildlife, except for small animals identified in FDCE Report at culvert locations and designated Wildlife Crossing locations.
3. More detailed analysis of specific Wildlife Crossing locations and provisions will be developed based upon results of environmental analysis and coordination with relevant agencies, regulatory bodies, and project stakeholders.
4. Designated Urban Regions do not require Wildlife Crossings due to the low potential for wildlife in the area.
5. See FDCE Report for more information.



NHD Streams	Unrestricted	Padina, 1-8% slope
Segment Breaklines	Restricted	Padina, 8-18% slope
County Boundaries	Sandy Soils/Houston Toad Potential	
Stations and Maintenance Facilities	Arenosa, 1-8% slope	Eufaula, 1-5% slope
Wildlife Movement	Flo, 1-8% slope	
Potential Wildlife Crossing		



ARUP
 Arup Texas, Inc.
 10370 Richmond Ave., Suite 475
 Houston, Texas 77042 USA
 Tel (713) 7832787 Fax (713) 343 1487
 www.arup.com Texas Registered Engineering Firm: F-1990

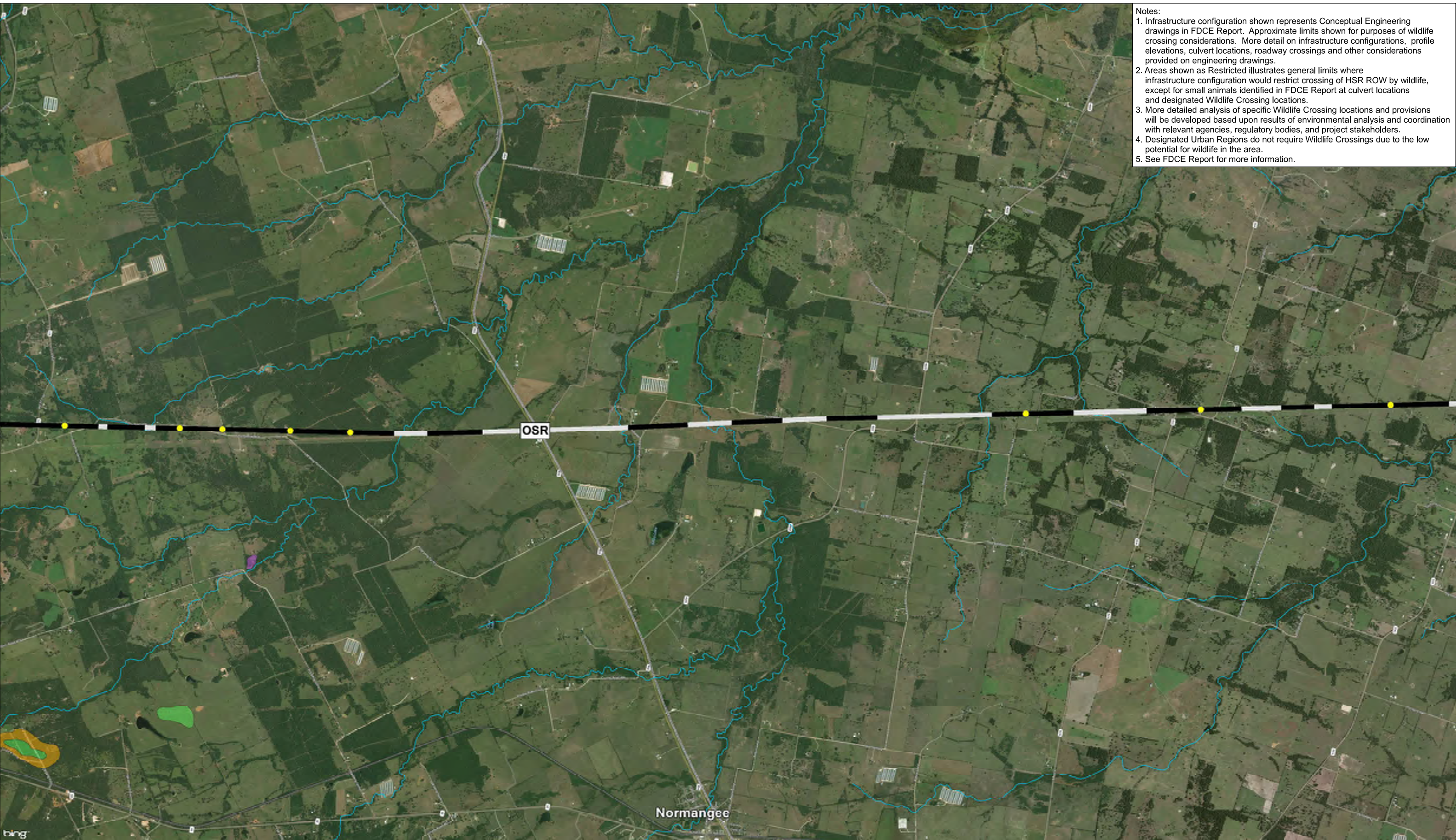
FRESE NICHOLS
 2711 North Haskell Ave., Suite 3300
 Dallas, Texas 75204
 Tel (214) 217 2200 Fax (214) 217 2201
 www.freese.com Texas Registered Engineering Firm: F-2144

TEXAS CENTRAL
 1601 Elm Street, Suite 4343, Dallas, Texas 75201

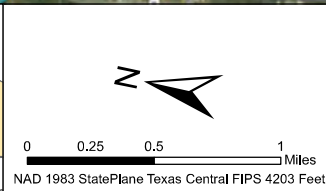
WT Segment THSR Potential Wildlife Crossings
 Sheet 28 of 38

File Name WestTeague_WildlifeCrossings.mxd	Date 9/15/2017
Status Final Draft	Drawn By MK
Job No 234180-00	Drawing WLC-00-4030
	Rev P1

- Notes:
1. Infrastructure configuration shown represents Conceptual Engineering drawings in FDCE Report. Approximate limits shown for purposes of wildlife crossing considerations. More detail on infrastructure configurations, profile elevations, culvert locations, roadway crossings and other considerations provided on engineering drawings.
 2. Areas shown as Restricted illustrates general limits where infrastructure configuration would restrict crossing of HSR ROW by wildlife, except for small animals identified in FDCE Report at culvert locations and designated Wildlife Crossing locations.
 3. More detailed analysis of specific Wildlife Crossing locations and provisions will be developed based upon results of environmental analysis and coordination with relevant agencies, regulatory bodies, and project stakeholders.
 4. Designated Urban Regions do not require Wildlife Crossings due to the low potential for wildlife in the area.
 5. See FDCE Report for more information.



NHD Streams	Wildlife Movement	Sandy Soils/Houston Toad Potential
Segment Breaklines	Potential Wildlife Crossing	Arenosa, 1-8% slope
County Boundaries	Unrestricted	Bienville, 0-3% slope
Stations and Maintenance Facilities	Restricted	Padina, 1-8% slope
		Padina, 8-18% slope



ARUP
 Arup Texas, Inc.
 10370 Richmond Ave., Suite 475
 Houston, Texas 77042 USA
 Tel (713) 7832787 Fax (713) 343 1487
 www.arup.com Texas Registered Engineering Firm: F-1990

FRESE NICHOLS
 2711 North Haskell Ave., Suite 3300
 Dallas, Texas 75204
 Tel (214) 217 2200 Fax (214) 217 2201
 www.fn.com Texas Registered Engineering Firm: F-2144

TEXAS CENTRAL
 1601 Elm Street, Suite 4343, Dallas, Texas 75201

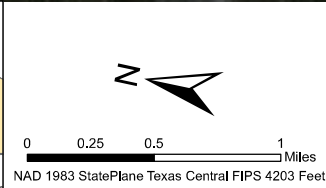
WT Segment THSR Potential Wildlife Crossings
 Sheet 29 of 38

File Name WestTeague_WildlifeCrossings.mxd	Date 9/15/2017
Status Final Draft	Drawn By MK
Job No 234180-00	Drawing WLC-00-4031
	Rev P1

- Notes:
1. Infrastructure configuration shown represents Conceptual Engineering drawings in FDCE Report. Approximate limits shown for purposes of wildlife crossing considerations. More detail on infrastructure configurations, profile elevations, culvert locations, roadway crossings and other considerations provided on engineering drawings.
 2. Areas shown as Restricted illustrates general limits where infrastructure configuration would restrict crossing of HSR ROW by wildlife, except for small animals identified in FDCE Report at culvert locations and designated Wildlife Crossing locations.
 3. More detailed analysis of specific Wildlife Crossing locations and provisions will be developed based upon results of environmental analysis and coordination with relevant agencies, regulatory bodies, and project stakeholders.
 4. Designated Urban Regions do not require Wildlife Crossings due to the low potential for wildlife in the area.
 5. See FDCE Report for more information.



NHD Streams	Wildlife Movement
Segment Breaklines	Potential Wildlife Crossing
County Boundaries	Unrestricted
Stations and Maintenance Facilities	Restricted



Arup Texas, Inc.
12370 Richmond Ave., Suite 475
Houston, Texas 77042 USA
Tel (713) 7832787 Fax (713) 343 1487
www.arup.com
Texas Registered Engineering Firm: F-1990

2711 North Haskell Ave., Suite 3300
Dallas, Texas 75204
Tel (214) 217 2200 Fax (214) 217 2201
www.freese.com
Texas Registered Engineering Firm: F-2144

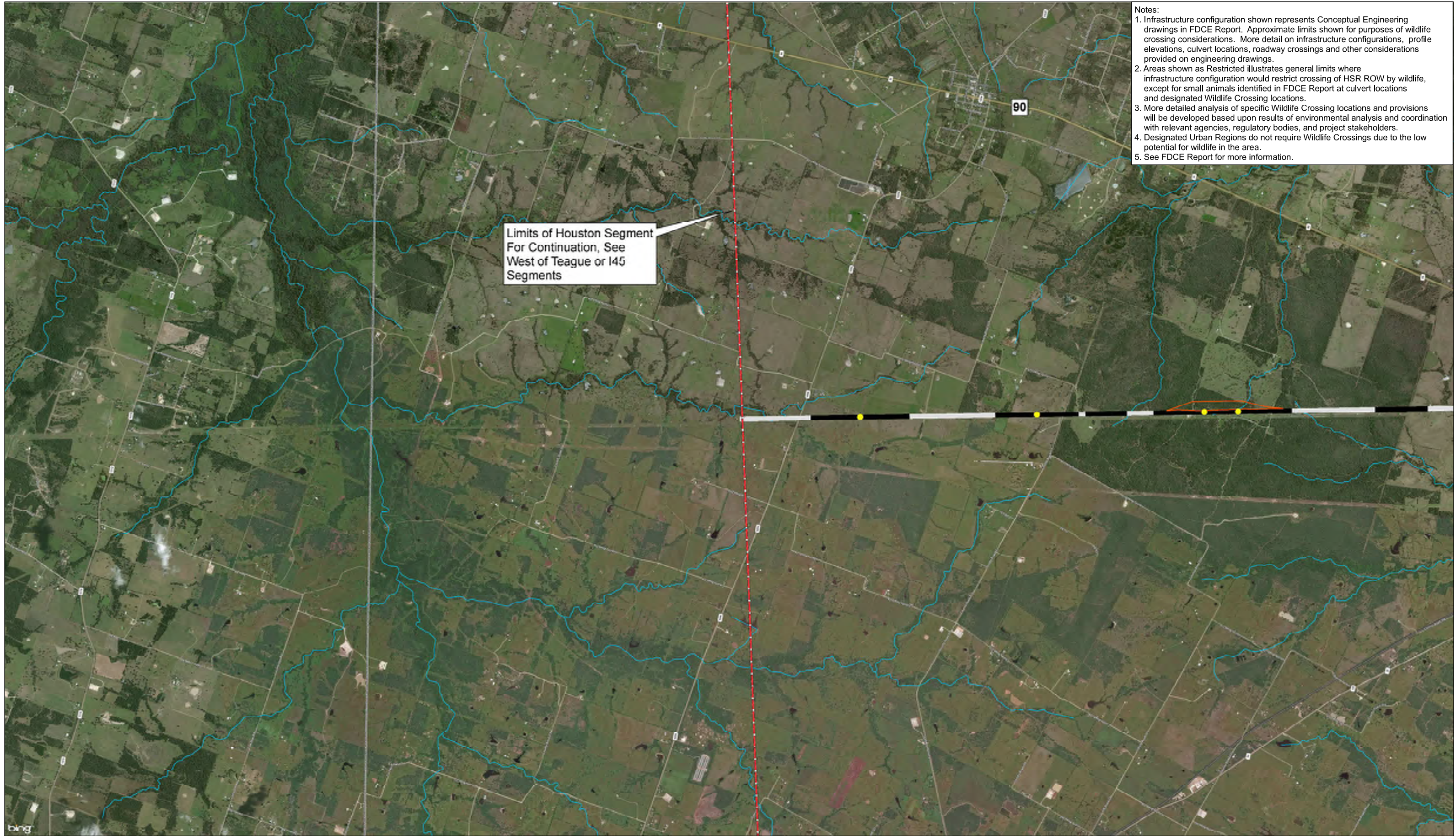
1601 Elm Street, Suite 4343, Dallas, Texas 75201

WT Segment
THSR
Potential Wildlife
Crossings
 Sheet 30 of 38

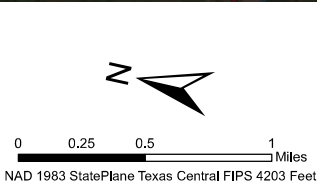
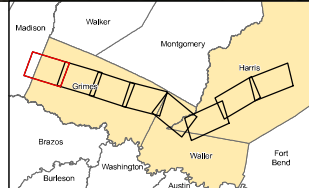
File Name WestTeague_WildlifeCrossings.mxd		Date 9/15/2017
Status Final Draft		Drawn By MK
Job No 234180-00	Drawing WLC-00-4032	Rev P1

- Notes:
1. Infrastructure configuration shown represents Conceptual Engineering drawings in FDCE Report. Approximate limits shown for purposes of wildlife crossing considerations. More detail on infrastructure configurations, profile elevations, culvert locations, roadway crossings and other considerations provided on engineering drawings.
 2. Areas shown as Restricted illustrates general limits where infrastructure configuration would restrict crossing of HSR ROW by wildlife, except for small animals identified in FDCE Report at culvert locations and designated Wildlife Crossing locations.
 3. More detailed analysis of specific Wildlife Crossing locations and provisions will be developed based upon results of environmental analysis and coordination with relevant agencies, regulatory bodies, and project stakeholders.
 4. Designated Urban Regions do not require Wildlife Crossings due to the low potential for wildlife in the area.
 5. See FDCE Report for more information.

Limits of Houston Segment
For Continuation, See
West of Teague or I45
Segments



NHD Streams	Wildlife Movement
Segment Breaklines	Potential Wildlife Crossing
County Boundaries	Unrestricted
Stations and Maintenance Facilities	Restricted



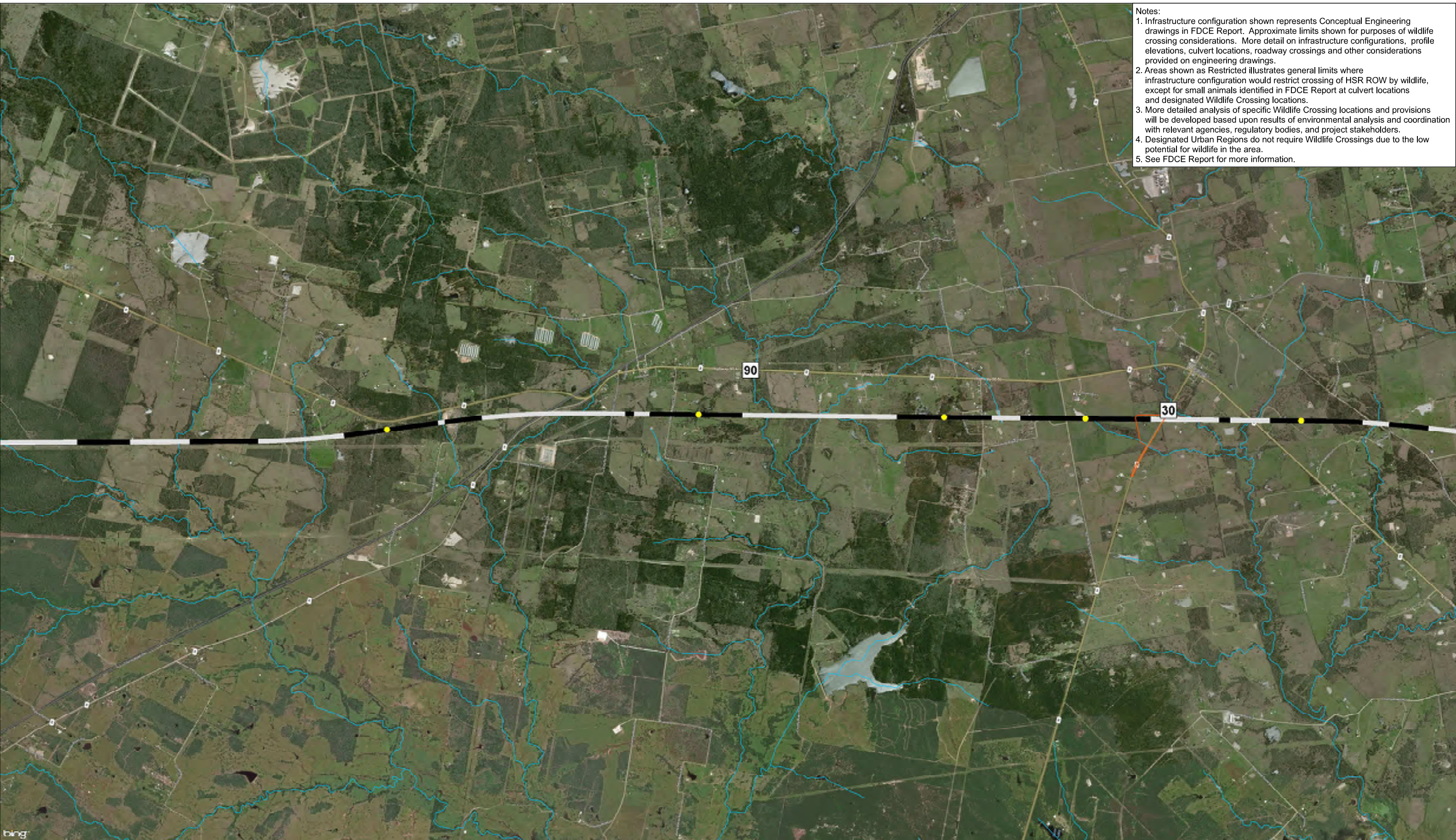
ARUP Arup Texas, Inc. 10370 Richmond Ave., Suite 475 Houston, Texas 77042 USA Tel (713) 7832787 Fax (713) 343 1487 www.arup.com Texas Registered Engineering Firm: F-1990	FRESE NICHOLS 2711 North Haskell Ave., Suite 3300 Dallas, Texas 75204 Tel (214) 217 2200 Fax (214) 217 2201 www.frese.com Texas Registered Engineering Firm: F-2144
--	---

TEXAS CENTRAL
1601 Elm Street, Suite 4343, Dallas, Texas 75201

**HN Segment
THSR
Potential Wildlife
Crossings
Sheet 31 of 38**

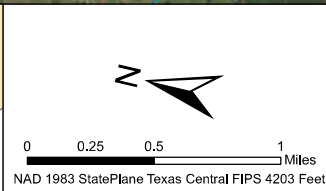
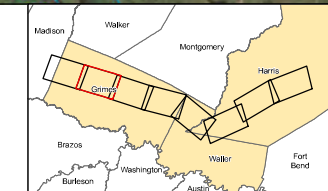
File Name Houston_WildlifeCrossings.mxd	Date 9/15/2017
Status Final Draft	Drawn By MK
Job No 234180-00	Drawing WLC-00-4033
	Rev P1

- Notes:
1. Infrastructure configuration shown represents Conceptual Engineering drawings in FDCE Report. Approximate limits shown for purposes of wildlife crossing considerations. More detail on infrastructure configurations, profile elevations, culvert locations, roadway crossings and other considerations provided on engineering drawings.
 2. Areas shown as Restricted illustrates general limits where infrastructure configuration would restrict crossing of HSR ROW by wildlife, except for small animals identified in FDCE Report at culvert locations and designated Wildlife Crossing locations.
 3. More detailed analysis of specific Wildlife Crossing locations and provisions will be developed based upon results of environmental analysis and coordination with relevant agencies, regulatory bodies, and project stakeholders.
 4. Designated Urban Regions do not require Wildlife Crossings due to the low potential for wildlife in the area.
 5. See FDCE Report for more information.



Wildlife Movement

- NHD Streams
- - - Segment Breaklines
- County Boundaries
- Stations and Maintenance Facilities
- Potential Wildlife Crossing
- Unrestricted
- Restricted



ARUP
 Arup Texas, Inc.
 12370 Richmond Ave., Suite 475
 Houston, Texas 77042 USA
 Tel (713) 7832787 Fax (713) 343 1487
 www.arup.com
 Texas Registered Engineering Firm: F-1990

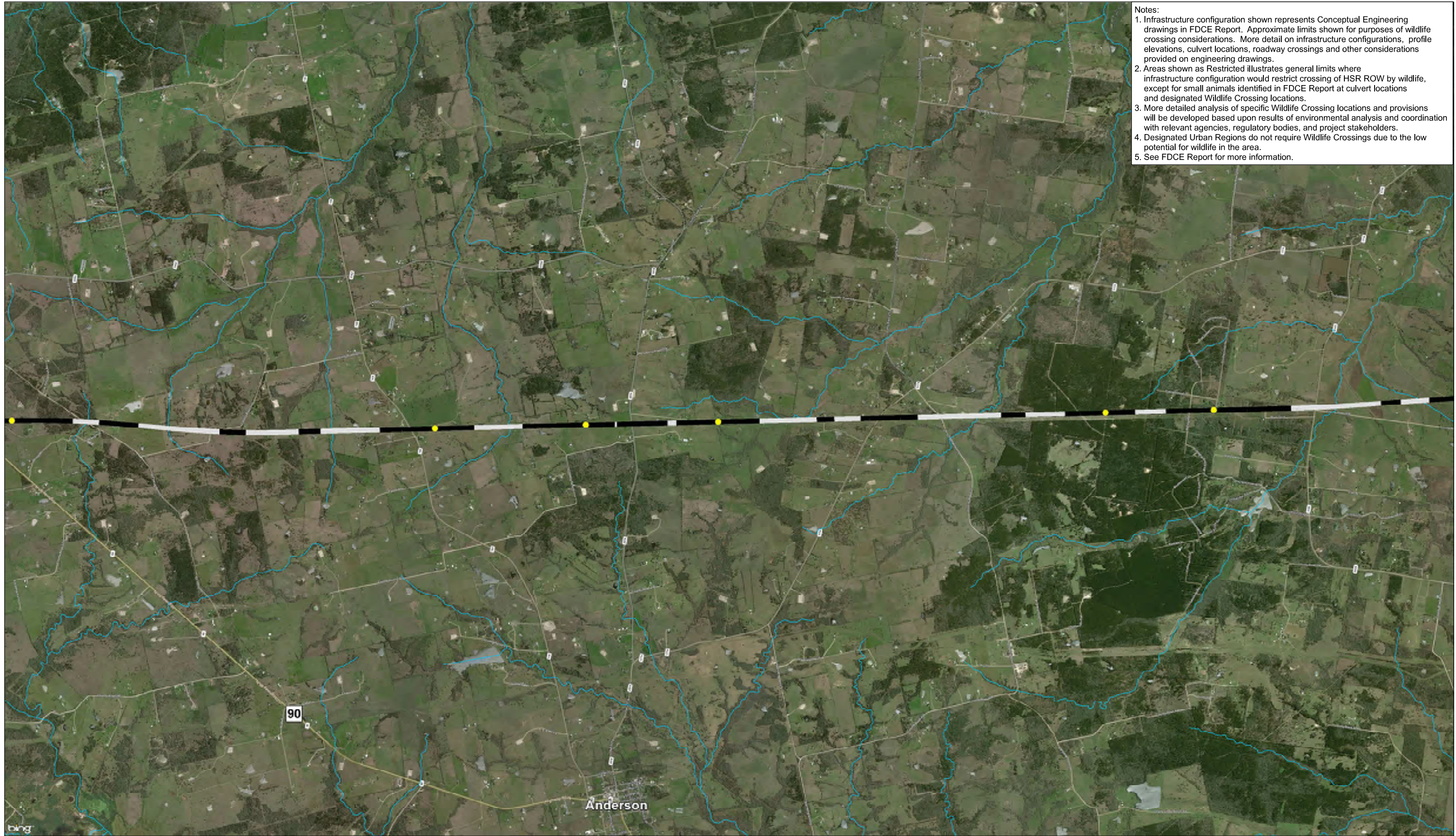
FRESE NICHOLS
 2711 North Haskell Ave., Suite 3300
 Dallas, Texas 75204
 Tel (214) 217 2200 Fax (214) 217 2201
 www.frese.com
 Texas Registered Engineering Firm: F-2144

TEXAS CENTRAL
 1601 Elm Street, Suite 4343, Dallas, Texas 75201

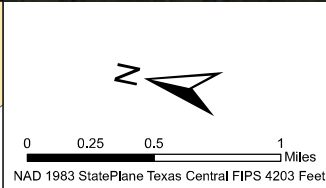
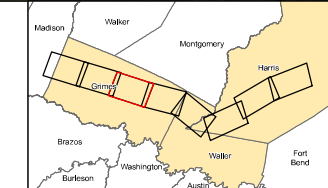
HN Segment THSR Potential Wildlife Crossings
 Sheet 32 of 38

File Name Houston_WildlifeCrossings.mxd	Date 9/15/2017
Status Final Draft	Drawn By MK
Job No 234180-00	Drawing WLC-00-4034
	Rev P1

- Notes:
1. Infrastructure configuration shown represents Conceptual Engineering drawings in FDCE Report. Approximate limits shown for purposes of wildlife crossing considerations. More detail on infrastructure configurations, profile elevations, culvert locations, roadway crossings and other considerations provided on engineering drawings.
 2. Areas shown as Restricted illustrates general limits where infrastructure configuration would restrict crossing of HSR ROW by wildlife, except for small animals identified in FDCE Report at culvert locations and designated Wildlife Crossing locations.
 3. More detailed analysis of specific Wildlife Crossing locations and provisions will be developed based upon results of environmental analysis and coordination with relevant agencies, regulatory bodies, and project stakeholders.
 4. Designated Urban Regions do not require Wildlife Crossings due to the low potential for wildlife in the area.
 5. See FDCE Report for more information.



NHD Streams	Wildlife Movement
Segment Breaklines	Potential Wildlife Crossing
County Boundaries	Unrestricted
Stations and Maintenance Facilities	Restricted



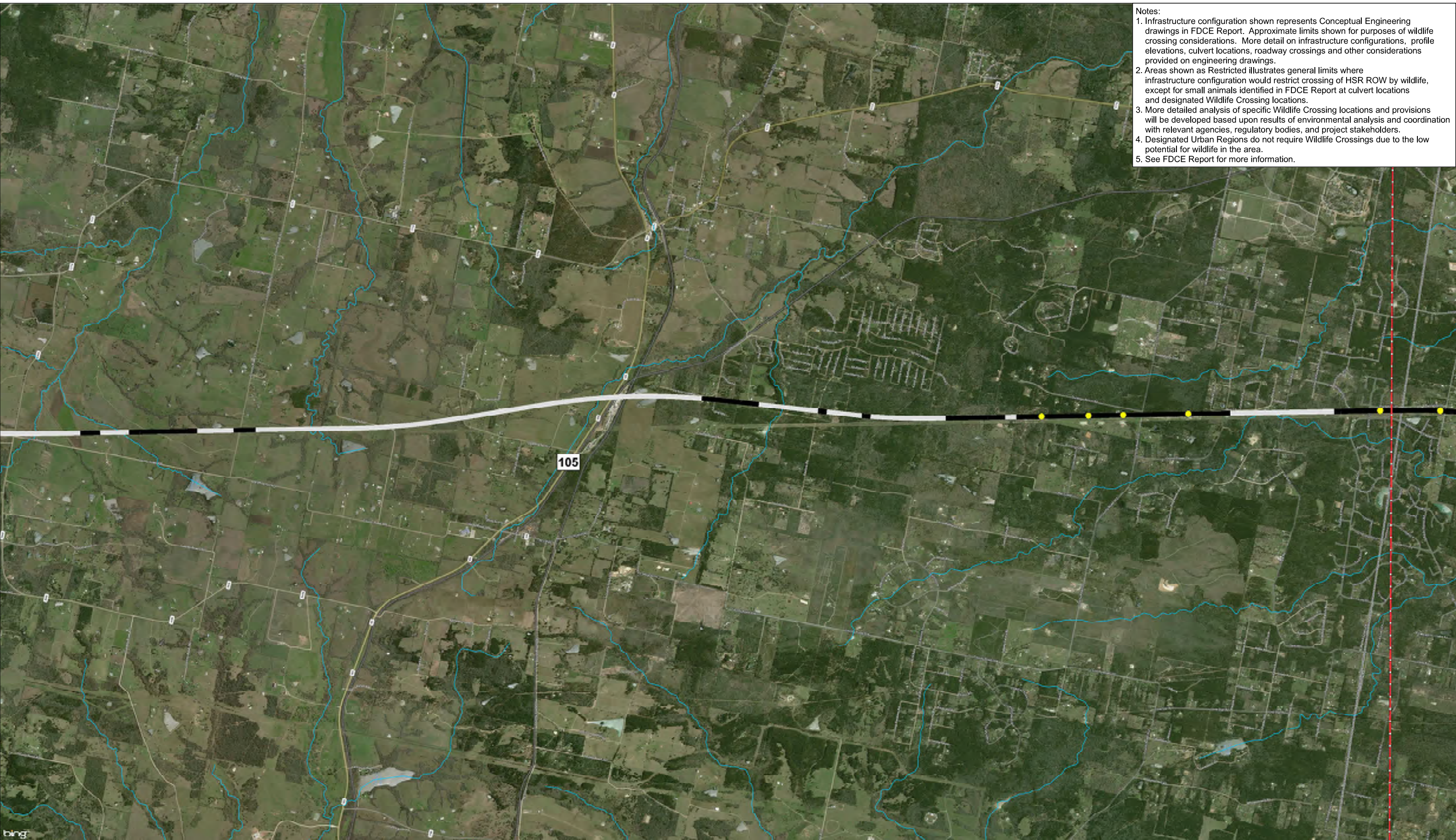
ARUP Arup Texas, Inc. 12370 Richmond Ave., Suite 475 Houston, Texas 77042 USA Tel (713) 7832787 Fax (713) 343 1487 www.arup.com Texas Registered Engineering Firm: F-1990	FRESE NICHOLS 2711 North Haskell Ave., Suite 3300 Dallas, Texas 75204 Tel (214) 217 2200 Fax (214) 217 2201 www.freesenichols.com Texas Registered Engineering Firm: F-2144
--	---

TEXAS CENTRAL
1601 Elm Street, Suite 4343, Dallas, Texas 75201

**HN Segment
THSR
Potential Wildlife
Crossings
Sheet 33 of 38**

File Name Houston_WildlifeCrossings.mxd	Date 9/15/2017
Status Final Draft	Drawn By MK
Job No 234180-00	Drawing WLC-00-4035
	Rev P1

- Notes:
1. Infrastructure configuration shown represents Conceptual Engineering drawings in FDCE Report. Approximate limits shown for purposes of wildlife crossing considerations. More detail on infrastructure configurations, profile elevations, culvert locations, roadway crossings and other considerations provided on engineering drawings.
 2. Areas shown as Restricted illustrates general limits where infrastructure configuration would restrict crossing of HSR ROW by wildlife, except for small animals identified in FDCE Report at culvert locations and designated Wildlife Crossing locations.
 3. More detailed analysis of specific Wildlife Crossing locations and provisions will be developed based upon results of environmental analysis and coordination with relevant agencies, regulatory bodies, and project stakeholders.
 4. Designated Urban Regions do not require Wildlife Crossings due to the low potential for wildlife in the area.
 5. See FDCE Report for more information.

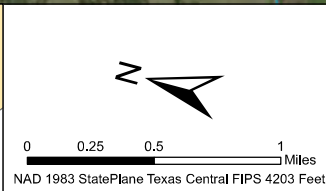
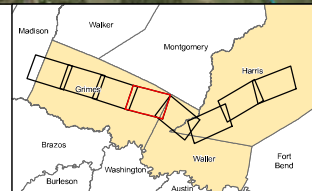


Wildlife Movement

- Potential Wildlife Crossing
- Unrestricted
- Restricted

Legend

- NHD Streams
- Segment Breaklines
- County Boundaries
- Stations and Maintenance Facilities



ARUP
 Arup Texas, Inc.
 10370 Richmond Ave., Suite 475
 Houston, Texas 77042 USA
 Tel (713) 7832787 Fax (713) 343 1487
 www.arup.com Texas Registered Engineering Firm: F-1990

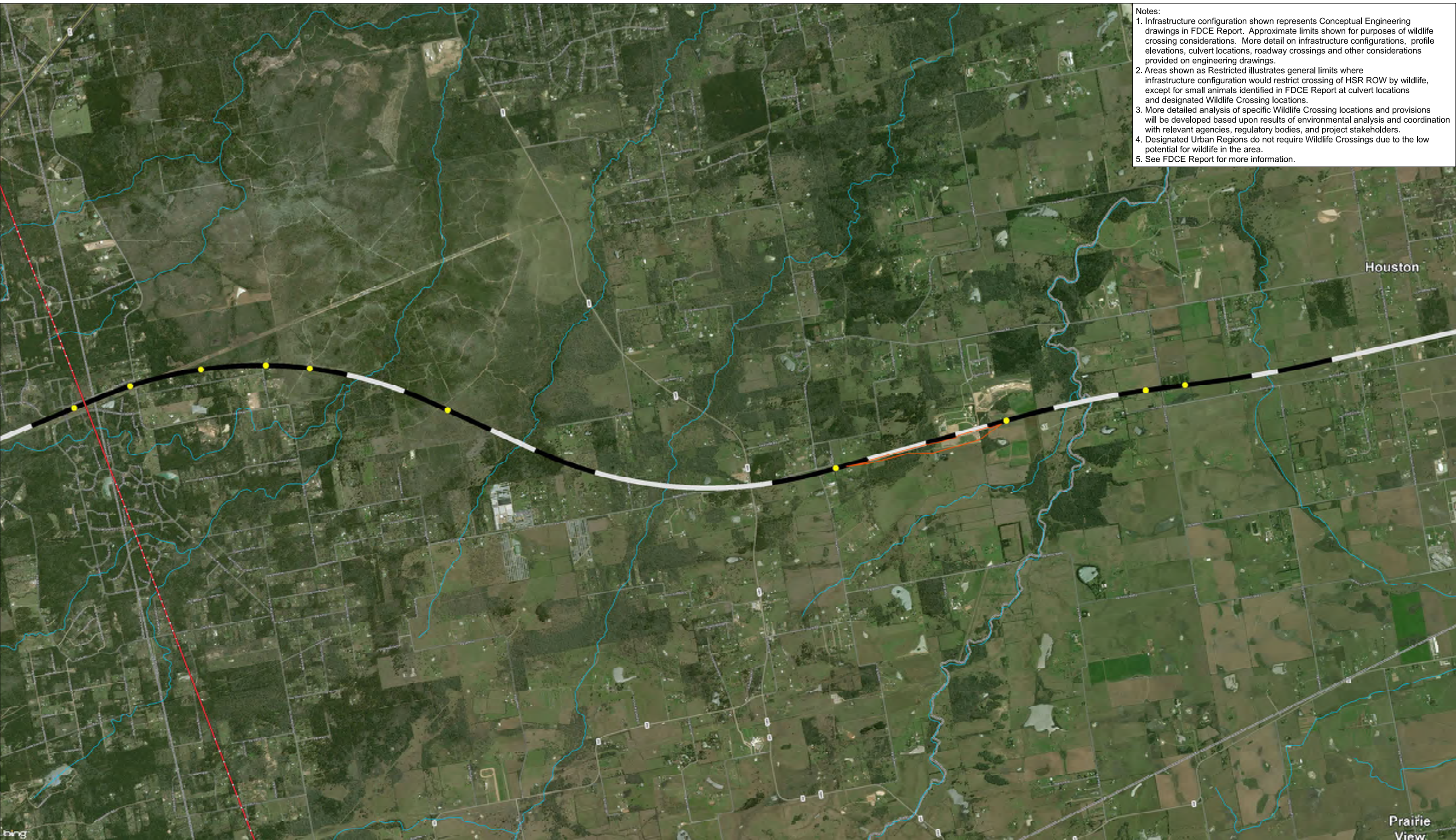
FRESE NICHOLS
 2711 North Haskell Ave., Suite 3300
 Dallas, Texas 75204
 Tel (214) 217 2200 Fax (214) 217 2201
 www.freese.com Texas Registered Engineering Firm: F-2144

TEXAS CENTRAL
 1601 Elm Street, Suite 4343, Dallas, Texas 75201

HN Segment THSR Potential Wildlife Crossings
 Sheet 34 of 38

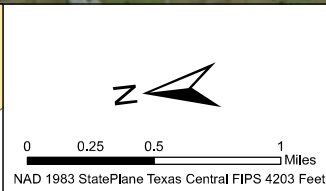
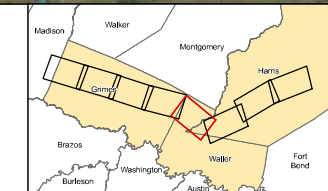
File Name Houston_WildlifeCrossings.mxd	Date 9/15/2017
Status Final Draft	Drawn By MK
Job No 234180-00	Drawing WLC-00-4036
	Rev P1

- Notes:
1. Infrastructure configuration shown represents Conceptual Engineering drawings in FDCE Report. Approximate limits shown for purposes of wildlife crossing considerations. More detail on infrastructure configurations, profile elevations, culvert locations, roadway crossings and other considerations provided on engineering drawings.
 2. Areas shown as Restricted illustrates general limits where infrastructure configuration would restrict crossing of HSR ROW by wildlife, except for small animals identified in FDCE Report at culvert locations and designated Wildlife Crossing locations.
 3. More detailed analysis of specific Wildlife Crossing locations and provisions will be developed based upon results of environmental analysis and coordination with relevant agencies, regulatory bodies, and project stakeholders.
 4. Designated Urban Regions do not require Wildlife Crossings due to the low potential for wildlife in the area.
 5. See FDCE Report for more information.



Wildlife Movement

- NHD Streams
- - - Segment Breaklines
- County Boundaries
- Stations and Maintenance Facilities
- Potential Wildlife Crossing
- Unrestricted
- Restricted




ARUP

Arup Texas, Inc.
12370 Richmond Ave., Suite 475
Houston, Texas 77042 USA
Tel (713) 7832787 Fax (713) 343 1487
www.arup.com
Texas Registered Engineering Firm: F-1990

FRESE NICHOLS

2711 North Haskell Ave., Suite 3300
Dallas, Texas 75204
Tel (214) 217 2200 Fax (214) 217 2201
www.frees.com
Texas Registered Engineering Firm: F-2144



TEXAS CENTRAL

1601 Elm Street, Suite 4343, Dallas, Texas 75201

**HN Segment
THSR
Potential Wildlife
Crossings**
 Sheet 35 of 38

File Name Houston_WildlifeCrossings.mxd		Date 9/15/2017
Status Final Draft		Drawn By MK
Job No 234180-00	Drawing WLC-00-4037	Rev P1

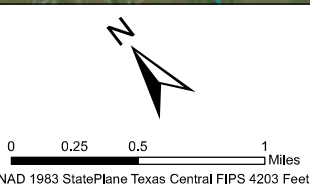
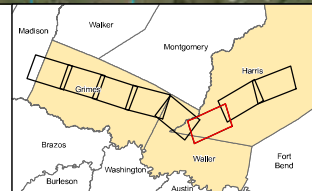
- Notes:
1. Infrastructure configuration shown represents Conceptual Engineering drawings in FDCE Report. Approximate limits shown for purposes of wildlife crossing considerations. More detail on infrastructure configurations, profile elevations, culvert locations, roadway crossings and other considerations provided on engineering drawings.
 2. Areas shown as Restricted illustrates general limits where infrastructure configuration would restrict crossing of HSR ROW by wildlife, except for small animals identified in FDCE Report at culvert locations and designated Wildlife Crossing locations.
 3. More detailed analysis of specific Wildlife Crossing locations and provisions will be developed based upon results of environmental analysis and coordination with relevant agencies, regulatory bodies, and project stakeholders.
 4. Designated Urban Regions do not require Wildlife Crossings due to the low potential for wildlife in the area.
 5. See FDCE Report for more information.



Wildlife Movement

- Potential Wildlife Crossing
- Unrestricted
- Restricted

— NHD Streams
 — Segment Breaklines
 — County Boundaries
 — Stations and Maintenance Facilities



ARUP
 Arup Texas, Inc.
 10370 Richmond Ave., Suite 475
 Houston, Texas 77042 USA
 Tel (713) 7832787 Fax (713) 343 1487
 www.arup.com
 Texas Registered Engineering Firm: F-1900

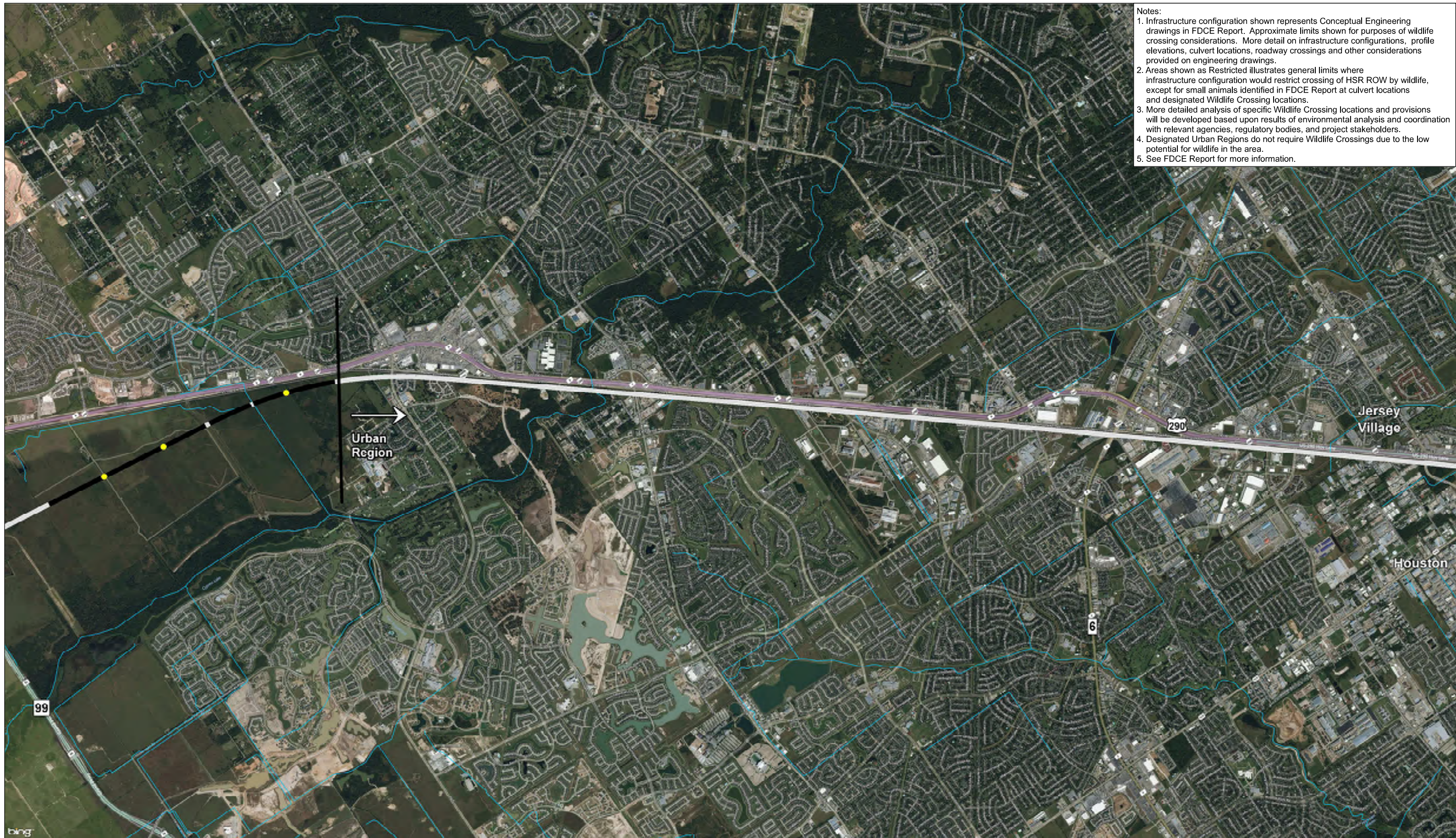
FRESE NICHOLS
 2711 North Haskell Ave., Suite 3300
 Dallas, Texas 75204
 Tel (214) 217 2200 Fax (214) 217 2201
 www.freesenichols.com
 Texas Registered Engineering Firm: F-2144

TEXAS CENTRAL
 1601 Elm Street, Suite 4343, Dallas, Texas 75201

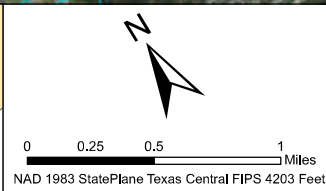
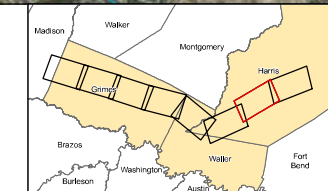
HN Segment
 THSR
 Potential Wildlife
 Crossings
 Sheet 36 of 38

File Name Houston_WildlifeCrossings.mxd	Date 9/15/2017
Status Final Draft	Drawn By MK
Job No 234180-00	Drawing WLC-00-4038
	Rev P1

- Notes:
1. Infrastructure configuration shown represents Conceptual Engineering drawings in FDCE Report. Approximate limits shown for purposes of wildlife crossing considerations. More detail on infrastructure configurations, profile elevations, culvert locations, roadway crossings and other considerations provided on engineering drawings.
 2. Areas shown as Restricted illustrates general limits where infrastructure configuration would restrict crossing of HSR ROW by wildlife, except for small animals identified in FDCE Report at culvert locations and designated Wildlife Crossing locations.
 3. More detailed analysis of specific Wildlife Crossing locations and provisions will be developed based upon results of environmental analysis and coordination with relevant agencies, regulatory bodies, and project stakeholders.
 4. Designated Urban Regions do not require Wildlife Crossings due to the low potential for wildlife in the area.
 5. See FDCE Report for more information.



NHD Streams	Wildlife Movement
Segment Breaklines	Potential Wildlife Crossing
County Boundaries	Unrestricted
Stations and Maintenance Facilities	Restricted



Arup Texas, Inc.
12370 Richmond Ave., Suite 475
Houston, Texas 77042 USA
Tel (713) 7832787 Fax (713) 343 1487
www.arup.com
Texas Registered Engineering Firm: F-1990

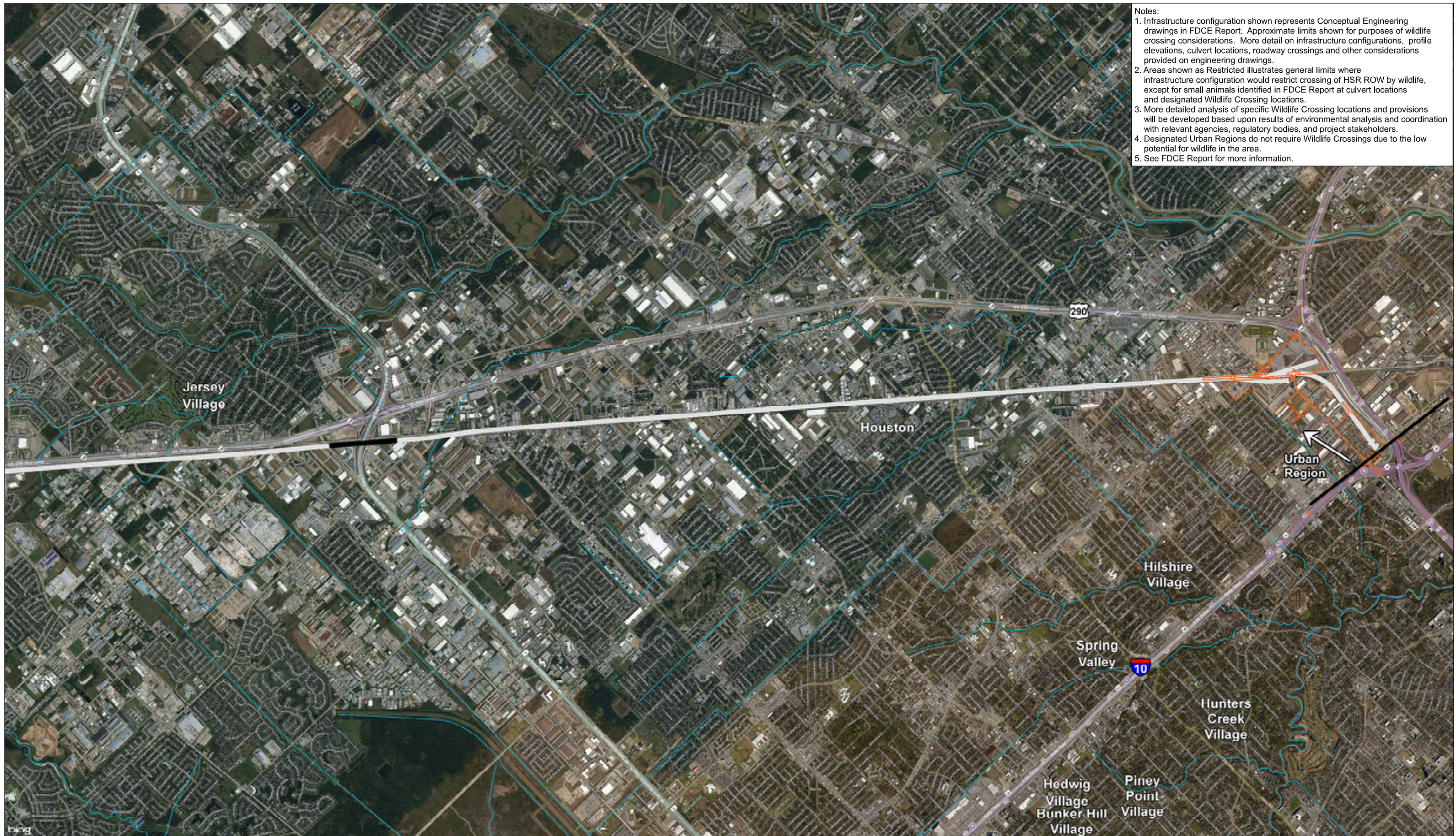
2711 North Haskell Ave., Suite 3300
Dallas, Texas 75204
Tel (214) 217 2200 Fax (214) 217 2201
www.freese.com
Texas Registered Engineering Firm: F-2144

1601 Elm Street, Suite 4343, Dallas, Texas 75201

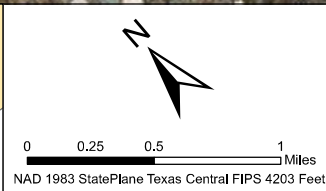
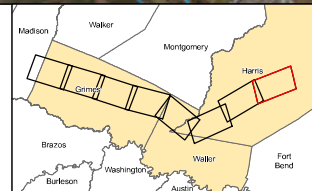
**HN Segment
THSR
Potential Wildlife
Crossings**
Sheet 37 of 38

File Name Houston_WildlifeCrossings.mxd	Date 9/15/2017
Status Final Draft	Drawn By MK
Job No 234180-00	Drawing WLC-00-4039
	Rev P1

- Notes:
1. Infrastructure configuration shown represents Conceptual Engineering drawings in FDCE Report. Approximate limits shown for purposes of wildlife crossing considerations. More detail on infrastructure configurations, profile elevations, culvert locations, roadway crossings and other considerations provided on engineering drawings.
 2. Areas shown as Restricted illustrates general limits where infrastructure configuration would restrict crossing of HSR ROW by wildlife, except for small animals identified in FDCE Report at culvert locations and designated Wildlife Crossing locations.
 3. More detailed analysis of specific Wildlife Crossing locations and provisions will be developed based upon results of environmental analysis and coordination with relevant agencies, regulatory bodies, and project stakeholders.
 4. Designated Urban Regions do not require Wildlife Crossings due to the low potential for wildlife in the area.
 5. See FDCE Report for more information.



NHD Streams	Wildlife Movement
Segment Breaklines	Potential Wildlife Crossing
County Boundaries	Unrestricted
Stations and Maintenance Facilities	Restricted



Arup Texas, Inc.
12370 Richmond Ave., Suite 475
Houston, Texas 77042 USA
Tel (713) 7832787 Fax (713) 343 1487
www.arup.com
Texas Registered Engineering Firm: F-1990

2711 North Haskell Ave., Suite 3300
Dallas, Texas 75204
Tel (214) 217 2200 Fax (214) 217 2201
www.freese.com
Texas Registered Engineering Firm: F-2144

1601 Elm Street, Suite 4343, Dallas, Texas 75201

**HN Segment
THSR
Potential Wildlife
Crossings
Sheet 38 of 38**

File Name Houston_WildlifeCrossings.mxd		Date 9/15/2017
Status Final Draft		Drawn By MK
Job No 234180-00	Drawing WLC-00-4040	Rev P1