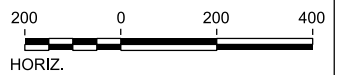




NOTES:  
1. SEE SHEET MNT-00-02002 FOR MOW NOTES.



REV	DATE	BY	CHK	APP	DESCRIPTION

DESIGNED BY  
**T. WAGNER**

DRAWN BY  
**A. LUKACS**

CHECKED BY  
**M. SPIRIDIGLIOZZI**

IN CHARGE  
**C. TAYLOR**

DATE  
**09/15/2017**

**ARUP**  
Arup Texas, Inc.  
10370 Richmond Ave., Suite 475  
Houston, Texas 77042 USA  
Tel (713) 783 2787 Fax (713) 343 1467  
www.arup.com  
Texas Registered Engineering Firm: F-1990

**FREESSE & NICHOLS**  
2711 North Haskell Ave., Suite 3300  
Dallas, Texas 75204  
Tel (214) 217 2200 Fax (214) 217 2201  
www.freese.com  
Texas Registered Engineering Firm: F-2144

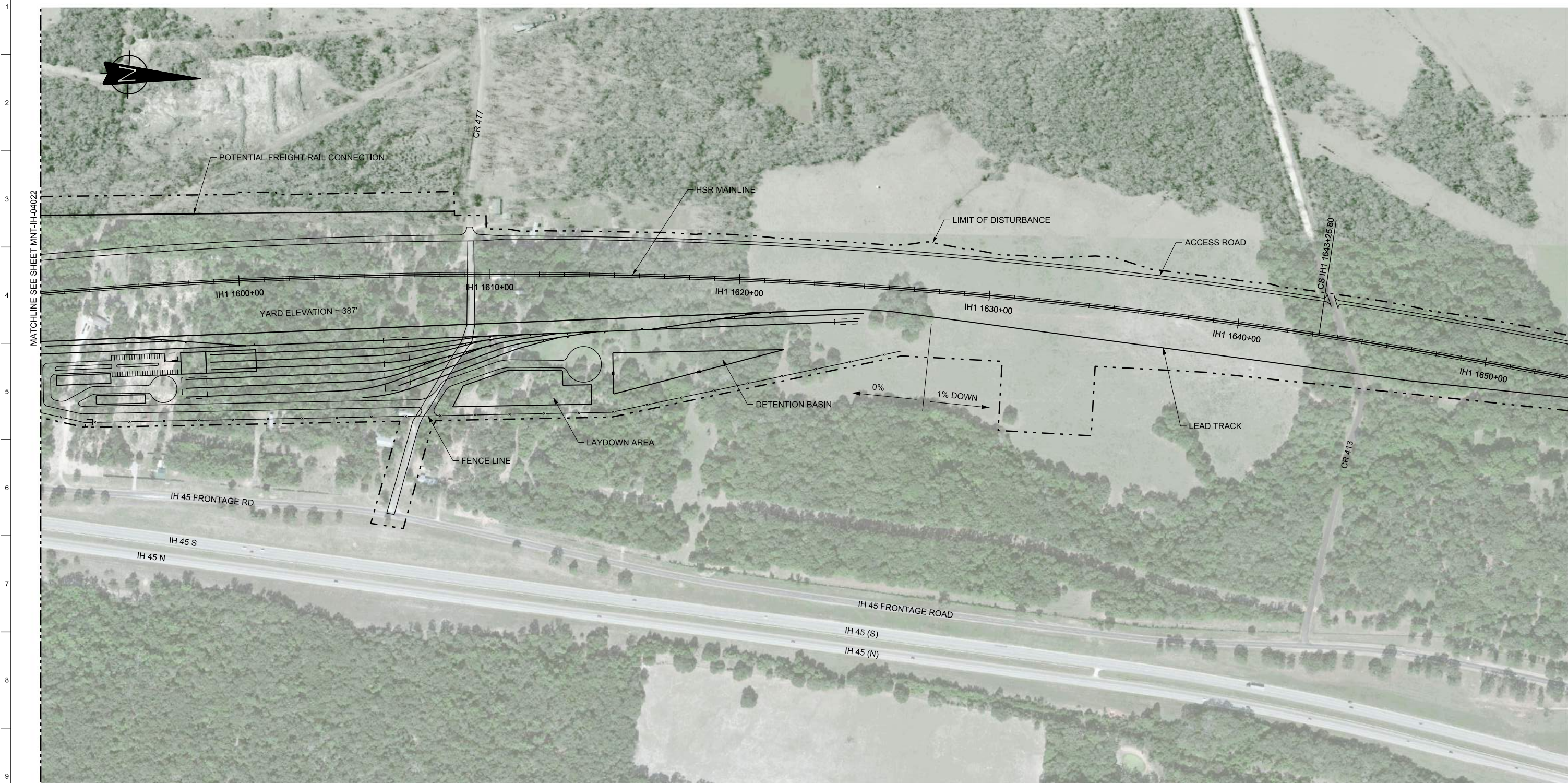
Client  
**TEXAS CENTRAL**  
1409 South Lamar Street, Suite 1022, Dallas, Texas 75215

Drawing Title  
**IH (45) SEGMENT  
MAINTENANCE FACILITIES  
MOW FACILITY IH-1  
LAYOUT - SHEET 1 OF 3**

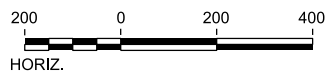
Scale  
AS SHOWN

Drawing Status  
**FINAL DRAFT**

Job No 234180	Drawing No MNT-IH-04022	Rev 01
------------------	----------------------------	-----------



NOTES:  
 1. SEE SHEET MNT-00-02002 FOR MOW NOTES.



REV	DATE	BY	CHK	APP	DESCRIPTION

DESIGNED BY  
**T. WAGNER**

DRAWN BY  
**A. LUKACS**

CHECKED BY  
**M. SPIRIDIGLIOZZI**

IN CHARGE  
**C. TAYLOR**

DATE  
**09/15/2017**

**ARUP**

Arup Texas, Inc.  
 10370 Richmond Ave., Suite 475  
 Houston, Texas 77042 USA  
 Tel (713) 783 2787 Fax (713) 343 1467  
 www.arup.com  
 Texas Registered Engineering Firm: F-1990

**FRESE & NICHOLS**

2711 North Haskell Ave., Suite 3300  
 Dallas, Texas 75204  
 Tel (214) 217 2200 Fax (214) 217 2201  
 www.freese.com  
 Texas Registered Engineering Firm: F-2144

Client

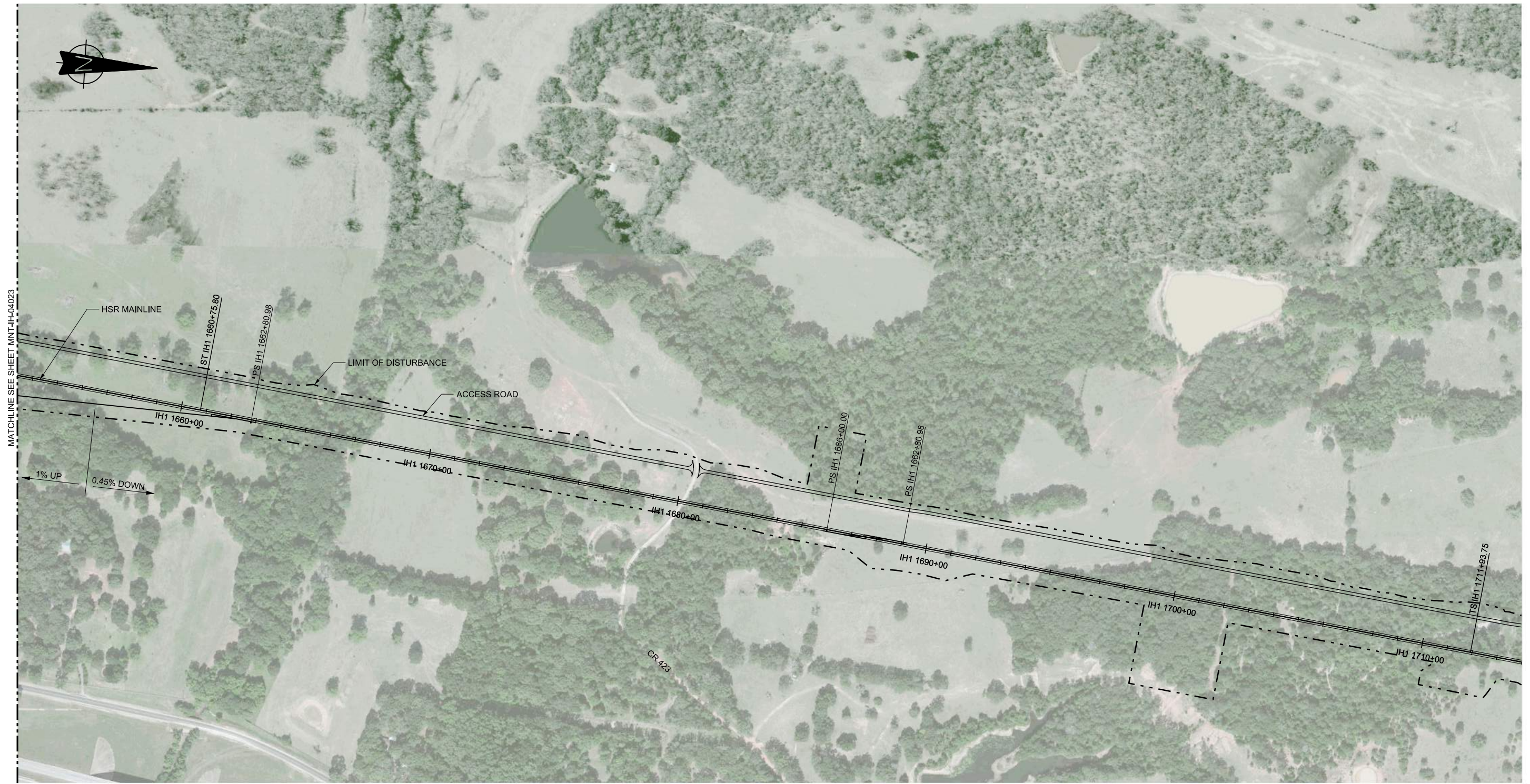
**TEXAS CENTRAL**

1409 South Lamar Street, Suite 1022, Dallas, Texas 75215

Drawing Title

**IH (45) SEGMENT  
 MAINTENANCE FACILITIES  
 MOW FACILITY IH-1  
 LAYOUT - SHEET 2 OF 3**

Scale AS SHOWN		
Drawing Status <b>FINAL DRAFT</b>		
Job No 234180	Drawing No MNT-IH-04023	Rev 01



NOTES:  
 1. SEE SHEET MNT-00-02002 FOR MOW NOTES.



REV	DATE	BY	CHK	APP	DESCRIPTION

DESIGNED BY  
**T. WAGNER**

DRAWN BY  
**A. LUKACS**

CHECKED BY  
**M. SPIRIDIGLIOZZI**

IN CHARGE  
**C. TAYLOR**

DATE  
**09/15/2017**

**ARUP**

Arup Texas, Inc.  
 10370 Richmond Ave., Suite 475  
 Houston, Texas 77042 USA  
 Tel (713) 783 2787 Fax (713) 343 1467  
 www.arup.com  
 Texas Registered Engineering Firm: F-1990

**FREESSE AND NICHOLS**

2711 North Haskell Ave., Suite 3300  
 Dallas, Texas 75204  
 Tel (214) 217 2200 Fax (214) 217 2201  
 www.freese.com  
 Texas Registered Engineering Firm: F-2144

Client

1409 South Lamar Street, Suite 1022, Dallas, Texas 75215

Drawing Title  
**IH (45) SEGMENT  
 MAINTENANCE FACILITIES  
 MOW FACILITY IH-1  
 LAYOUT - SHEET 3 OF 3**

Scale AS SHOWN		
Drawing Status FINAL DRAFT		
Job No 234180	Drawing No MNT-IH-04024	Rev 01



REV	DATE	BY	CHK	APP	DESCRIPTION

DESIGNED BY  
**J. COLQUHOUN**

DRAWN BY  
**M. JALBERT**

CHECKED BY  
**M. SPIRIDIGLIOZZI**

IN CHARGE  
**C. TAYLOR**

DATE  
**09/15/2017**

**ARUP**

Arup Texas, Inc.  
10370 Richmond Ave., Suite 475  
Houston, Texas 77042 USA  
Tel (713) 783 2787 Fax (713) 343 1467  
www.arup.com  
Texas Registered Engineering Firm: F-1990

**FREESSE & NICHOLS**

2711 North Haskell Ave., Suite 3300  
Dallas, Texas 75204  
Tel (214) 217 2200 Fax (214) 217 2201  
www.freese.com  
Texas Registered Engineering Firm: F-2144

Client

**TEXAS CENTRAL**

1409 South Lamar Street, Suite 1022, Dallas, Texas 75215

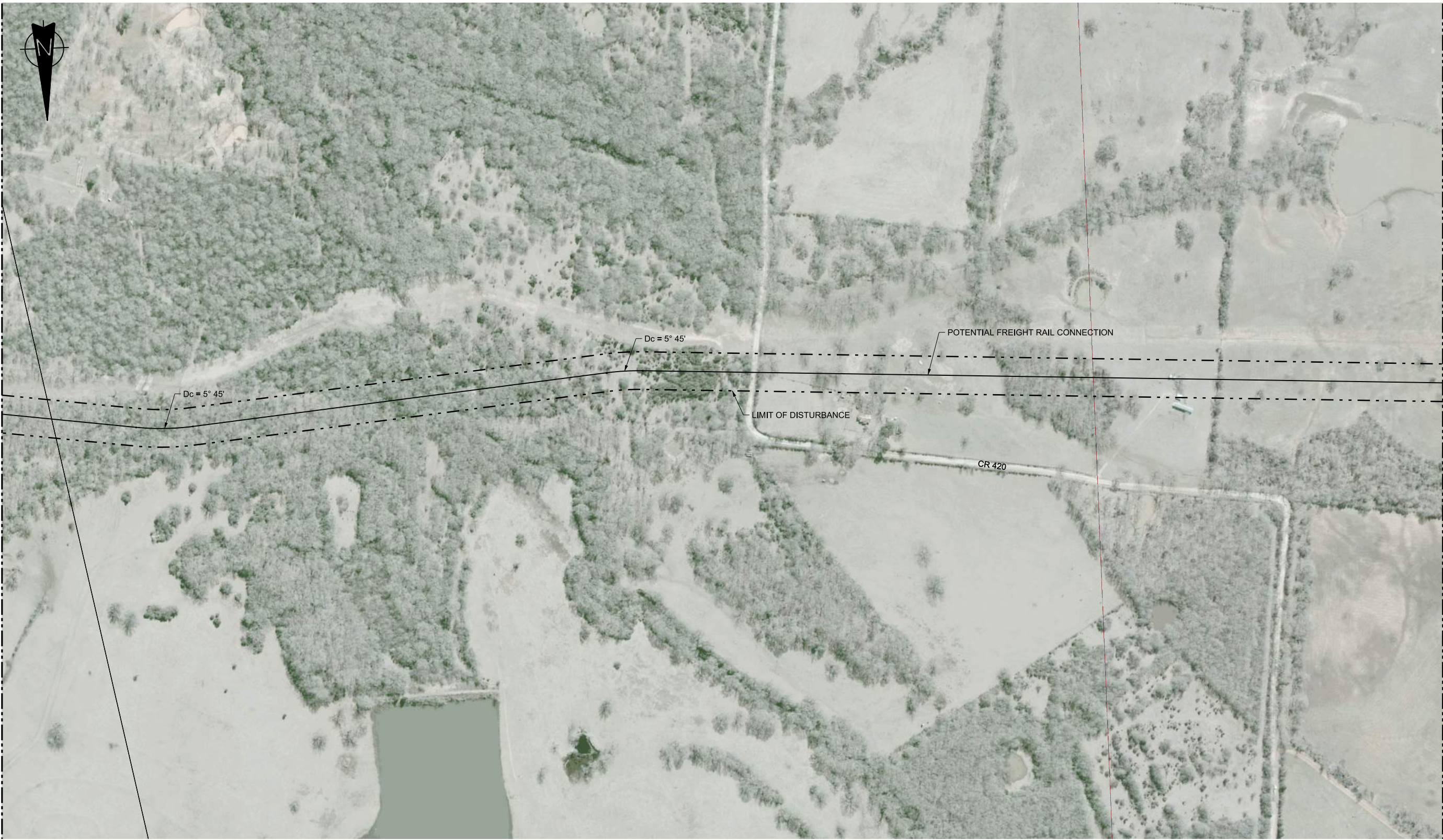
Drawing Title

**IH (45) SEGMENT  
MAINTENANCE FACILITIES  
TRACK CONNECTION  
LAYOUT - SHEET 1 OF 8**

Scale  
AS SHOWN

Drawing Status  
**FINAL DRAFT**

Job No 234180	Drawing No MNT-IH-04025	Rev 01
------------------	----------------------------	-----------



REV	DATE	BY	CHK	APP	DESCRIPTION

DESIGNED BY  
**J. COLQUHOUN**

DRAWN BY  
**M. JALBERT**

CHECKED BY  
**M. SPIRIDIGLIOZZI**

IN CHARGE  
**C. TAYLOR**

DATE  
**09/15/2017**

**ARUP**

Arup Texas, Inc.  
10370 Richmond Ave., Suite 475  
Houston, Texas 77042 USA  
Tel (713) 783 2787 Fax (713) 343 1467  
www.arup.com  
Texas Registered Engineering Firm: F-1990

**FRESE & NICHOLS**

2711 North Haskell Ave., Suite 3300  
Dallas, Texas 75204  
Tel (214) 217 2200 Fax (214) 217 2201  
www.freese.com  
Texas Registered Engineering Firm: F-2144

Client

**TEXAS CENTRAL**

1409 South Lamar Street, Suite 1022, Dallas, Texas 75215

Drawing Title

**IH (45) SEGMENT  
MAINTENANCE FACILITIES  
TRACK CONNECTION  
LAYOUT - SHEET 2 OF 8**

Scale  
AS SHOWN

Drawing Status  
**FINAL DRAFT**

Job No 234180	Drawing No MNT-IH-04026	Rev 01
------------------	----------------------------	-----------



MATCHLINE SEE SHEET MNT-IH-04026

MATCHLINE SEE SHEET MNT-IH-04026



HORIZ.

REV	DATE	BY	CHK	APP	DESCRIPTION

DESIGNED BY  
**J. COLQUHOUN**

DRAWN BY  
**M. JALBERT**

CHECKED BY  
**M. SPIRIDIGLIOZZI**

IN CHARGE  
**C. TAYLOR**

DATE  
**09/15/2017**

# ARUP

Arup Texas, Inc.  
10370 Richmond Ave., Suite 475  
Houston, Texas 77042 USA  
Tel (713) 783 2787 Fax (713) 343 1467  
www.arup.com  
Texas Registered Engineering Firm: F-1990

# FREESSE & NICHOLS

2711 North Haskell Ave., Suite 3300  
Dallas, Texas 75204  
Tel (214) 217 2200 Fax (214) 217 2201  
www.freese.com  
Texas Registered Engineering Firm: F-2144

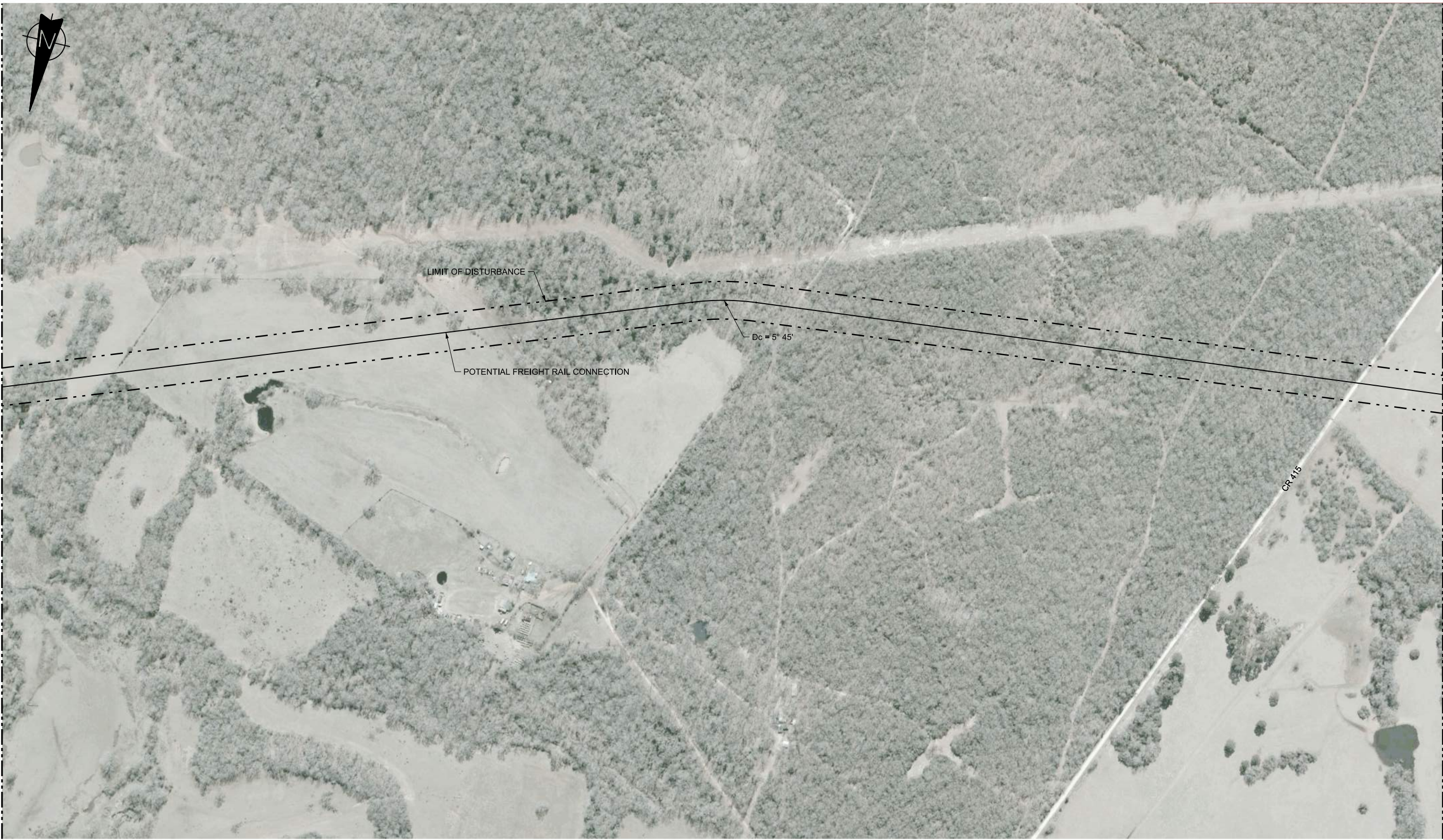
Client



1409 South Lamar Street, Suite 1022, Dallas, Texas 75215

Drawing Title  
**IH (45) SEGMENT  
MAINTENANCE FACILITIES  
TRACK CONNECTION  
LAYOUT - SHEET 3 OF 8**

Scale AS SHOWN		
Drawing Status FINAL DRAFT		
Job No 234180	Drawing No MNT-IH-04027	Rev 01



MATCHLINE SEE SHEET MNT-IH-04027

MATCHLINE SEE SHEET MNT-IH-04029



HORIZ.

REV	DATE	BY	CHK	APP	DESCRIPTION

DESIGNED BY  
**J. COLQUHOUN**

DRAWN BY  
**M. JALBERT**

CHECKED BY  
**M. SPIRIDIGLIOZZI**

IN CHARGE  
**C. TAYLOR**

DATE  
**09/15/2017**



Arup Texas, Inc.  
10370 Richmond Ave., Suite 475  
Houston, Texas 77042 USA  
Tel (713) 783 2787 Fax (713) 343 1467  
www.arup.com  
Texas Registered Engineering Firm: F-1990



2711 North Haskell Ave., Suite 3300  
Dallas, Texas 75204  
Tel (214) 217 2200 Fax (214) 217 2201  
www.freese.com  
Texas Registered Engineering Firm: F-2144

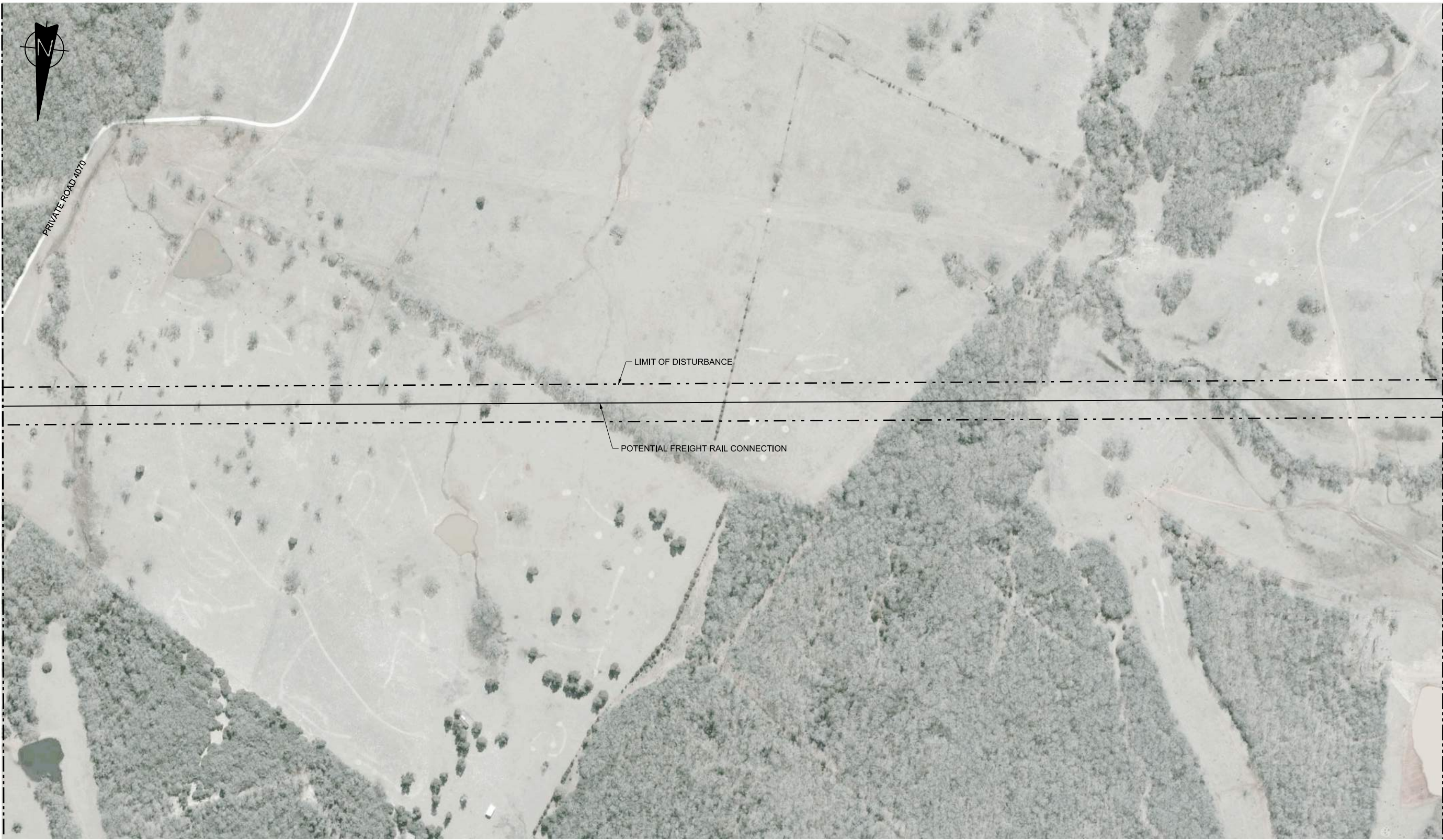
Client



1409 South Lamar Street, Suite 1022, Dallas, Texas 75215

Drawing Title  
**IH (45) SEGMENT  
MAINTENANCE FACILITIES  
TRACK CONNECTION  
LAYOUT - SHEET 4 OF 8**

Scale AS SHOWN		
Drawing Status <b>FINAL DRAFT</b>		
Job No 234180	Drawing No MNT-IH-04028	Rev 01



HORIZ.

REV	DATE	BY	CHK	APP	DESCRIPTION

DESIGNED BY  
**J. COLQUHOUN**

DRAWN BY  
**M. JALBERT**

CHECKED BY  
**M. SPIRIDIGLIOZZI**

IN CHARGE  
**C. TAYLOR**

DATE  
**09/15/2017**

# ARUP

Arup Texas, Inc.  
10370 Richmond Ave., Suite 475  
Houston, Texas 77042 USA  
Tel (713) 783 2787 Fax (713) 343 1467  
www.arup.com  
Texas Registered Engineering Firm: F-1990

# FREESSE & NICHOLS

2711 North Haskell Ave., Suite 3300  
Dallas, Texas 75204  
Tel (214) 217 2200 Fax (214) 217 2201  
www.freese.com  
Texas Registered Engineering Firm: F-2144

Client



1409 South Lamar Street, Suite 1022, Dallas, Texas 75215

Drawing Title

**IH (45) SEGMENT  
MAINTENANCE FACILITIES  
TRACK CONNECTION  
LAYOUT - SHEET 5 OF 8**

Scale AS SHOWN		
Drawing Status FINAL DRAFT		
Job No 234180	Drawing No MNT-IH-04029	Rev 01





REV	DATE	BY	CHK	APP	DESCRIPTION

DESIGNED BY  
**J. COLQUHOUN**

DRAWN BY  
**M. JALBERT**

CHECKED BY  
**M. SPIRIDIGLIOZZI**

IN CHARGE  
**C. TAYLOR**

DATE  
**09/15/2017**

**ARUP**

Arup Texas, Inc.  
10370 Richmond Ave., Suite 475  
Houston, Texas 77042 USA  
Tel (713) 783 2787 Fax (713) 343 1467  
www.arup.com  
Texas Registered Engineering Firm: F-1990

**FRESE & NICHOLS**

2711 North Haskell Ave., Suite 3300  
Dallas, Texas 75204  
Tel (214) 217 2200 Fax (214) 217 2201  
www.freese.com  
Texas Registered Engineering Firm: F-2144

Client

**TEXAS CENTRAL**

1409 South Lamar Street, Suite 1022, Dallas, Texas 75215

Drawing Title

**IH (45) SEGMENT  
MAINTENANCE FACILITIES  
TRACK CONNECTION  
LAYOUT - SHEET 6 OF 8**

Scale AS SHOWN		
Drawing Status FINAL DRAFT		
Job No 234180	Drawing No MNT-IH-04030	Rev 01

MATCHLINE SEE SHEET MNT-IH-04032



MATCHLINE SEE SHEET MNT-IH-04030

POTENTIAL FREIGHT LINE CONNECTION

LIMIT OF DISTURBANCE

Dc = 9° 60'

BNSF



HORIZ.

REV	DATE	BY	CHK	APP	DESCRIPTION

DESIGNED BY  
**J. COLQUHOUN**

DRAWN BY  
**M. JALBERT**

CHECKED BY  
**M. SPIRIDIGLIOZZI**

IN CHARGE  
**C. TAYLOR**

DATE  
**09/15/2017**

**ARUP**

Arup Texas, Inc.  
10370 Richmond Ave., Suite 475  
Houston, Texas 77042 USA  
Tel (713) 783 2787 Fax (713) 343 1467  
www.arup.com  
Texas Registered Engineering Firm: F-1990

**FREESSE & NICHOLS**

2711 North Haskell Ave., Suite 3300  
Dallas, Texas 75204  
Tel (214) 217 2200 Fax (214) 217 2201  
www.freese.com  
Texas Registered Engineering Firm: F-2144

Client



1409 South Lamar Street, Suite 1022, Dallas, Texas 75215

Drawing Title  
**IH (45) SEGMENT  
MAINTENANCE FACILITIES  
TRACK CONNECTION  
LAYOUT - SHEET 7 OF 8**

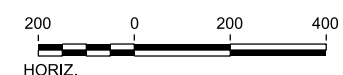
Scale  
**AS SHOWN**

Drawing Status  
**FINAL DRAFT**

Job No <b>234180</b>	Drawing No <b>MNT-IH-04031</b>	Rev <b>01</b>
-------------------------	-----------------------------------	------------------



MATCHLINE SEE SHEET MNT-IH-04031



REV	DATE	BY	CHK	APP	DESCRIPTION

DESIGNED BY  
**J. COLQUHOUN**

DRAWN BY  
**M. JALBERT**

CHECKED BY  
**M. SPIRIDIGLIOZZI**

IN CHARGE  
**C. TAYLOR**

DATE  
**09/15/2017**

**ARUP**

Arup Texas, Inc.  
10370 Richmond Ave., Suite 475  
Houston, Texas 77042 USA  
Tel (713) 783 2787 Fax (713) 343 1467  
www.arup.com  
Texas Registered Engineering Firm: F-1990

**FREESSE & NICHOLS**

2711 North Haskell Ave., Suite 3300  
Dallas, Texas 75204  
Tel (214) 217 2200 Fax (214) 217 2201  
www.freesse.com  
Texas Registered Engineering Firm: F-2144

Client

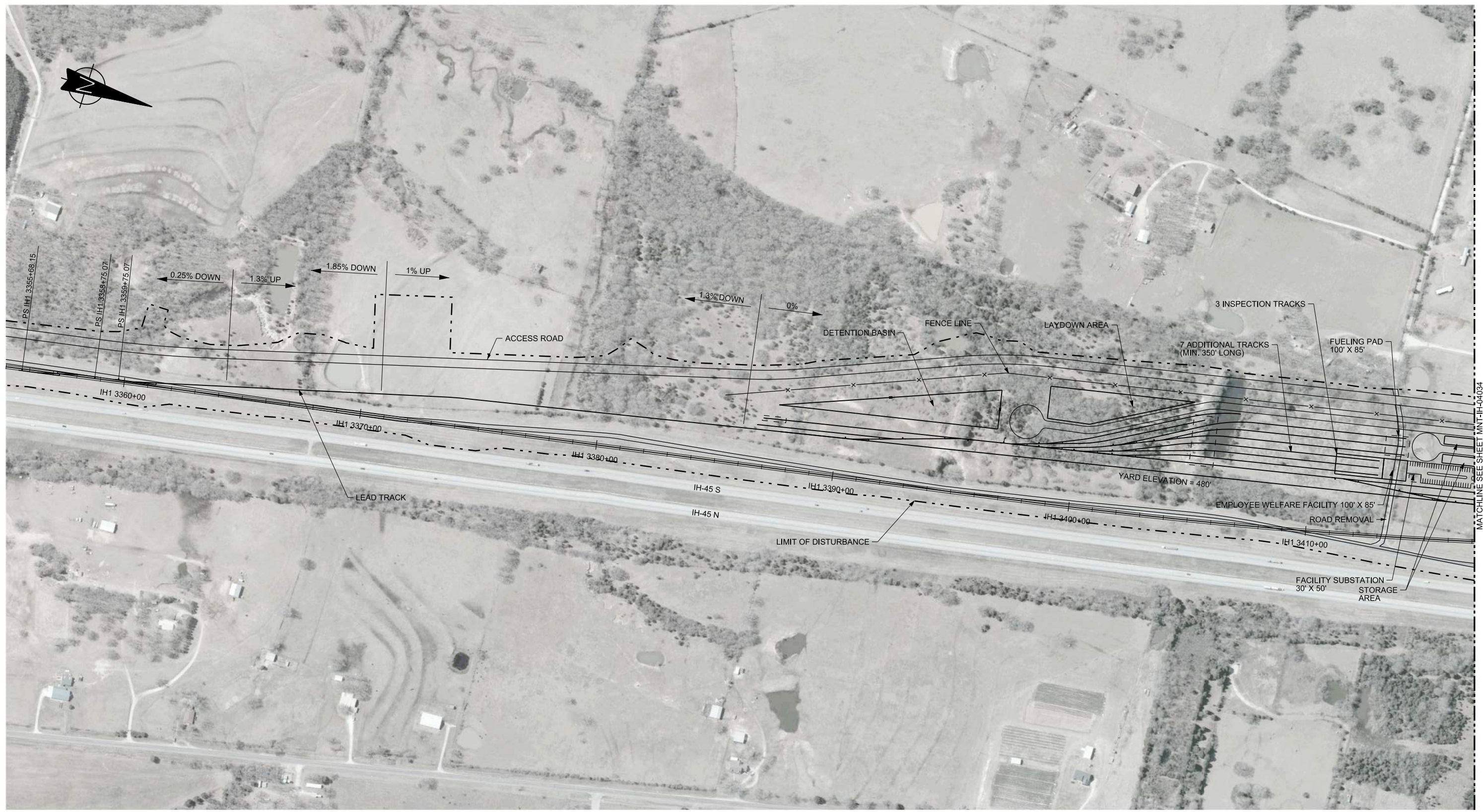
**TEXAS CENTRAL**

1409 South Lamar Street, Suite 1022, Dallas, Texas 75215

Drawing Title

**IH (45) SEGMENT  
MAINTENANCE FACILITIES  
TRACK CONNECTION  
LAYOUT - SHEET 8 OF 8**

Scale AS SHOWN		
Drawing Status FINAL DRAFT		
Job No 234180	Drawing No MNT-IH-04032	Rev 01



NOTES:  
 1. SEE SHEET MNT-00-02002 FOR MOW NOTES.

MATCHLINE SEE SHEET MNT-IH-04034

PLOT BY: NYPWICS01S PLOT TIME: 9/25/2017 8:21:20 PM

REV	DATE	BY	CHK	APP	DESCRIPTION

DESIGNED BY  
**T. WAGNER**

DRAWN BY  
**A. LUKACS**

CHECKED BY  
**M. SPIRIDIGLIOZZI**

IN CHARGE  
**C. TAYLOR**

DATE  
**09/15/2017**

**ARUP**

Arup Texas, Inc.  
 10370 Richmond Ave., Suite 475  
 Houston, Texas 77042 USA  
 Tel (713) 783 2787 Fax (713) 343 1467  
 www.arup.com  
 Texas Registered Engineering Firm: F-1990

**FRESE & NICHOLS**

2711 North Haskell Ave., Suite 3300  
 Dallas, Texas 75204  
 Tel (214) 217 2200 Fax (214) 217 2201  
 www.freese.com  
 Texas Registered Engineering Firm: F-2144

Client

**TEXAS CENTRAL**

1409 South Lamar Street, Suite 1022, Dallas, Texas 75215

Drawing Title

**IH (45) SEGMENT  
 MAINTENANCE FACILITIES  
 MOW FACILITY IH-2  
 LAYOUT - SHEET 1 OF 3**



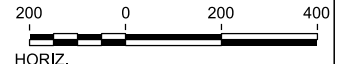
Scale AS SHOWN		
Drawing Status <b>FINAL DRAFT</b>		
Job No 234180	Drawing No MNT-IH-04033	Rev 01



MATCHLINE SEE SHEET MNT-IH-04033

MATCHLINE SEE SHEET MNT-IH-04035

NOTES:  
1. SEE SHEET MNT-00-02002 FOR MOW NOTES.



REV	DATE	BY	CHK	APP	DESCRIPTION

DESIGNED BY  
**T. WAGNER**

DRAWN BY  
**A. LUKACS**

CHECKED BY  
**M. SPIRIDIGLIOZZI**

IN CHARGE  
**C. TAYLOR**

DATE  
**09/15/2017**

**ARUP**

Arup Texas, Inc.  
10370 Richmond Ave., Suite 475  
Houston, Texas 77042 USA  
Tel (713) 783 2787 Fax (713) 343 1467  
www.arup.com  
Texas Registered Engineering Firm: F-1990

**FRESE & NICHOLS**

2711 North Haskell Ave., Suite 3300  
Dallas, Texas 75204  
Tel (214) 217 2200 Fax (214) 217 2201  
www.freese.com  
Texas Registered Engineering Firm: F-2144

Client

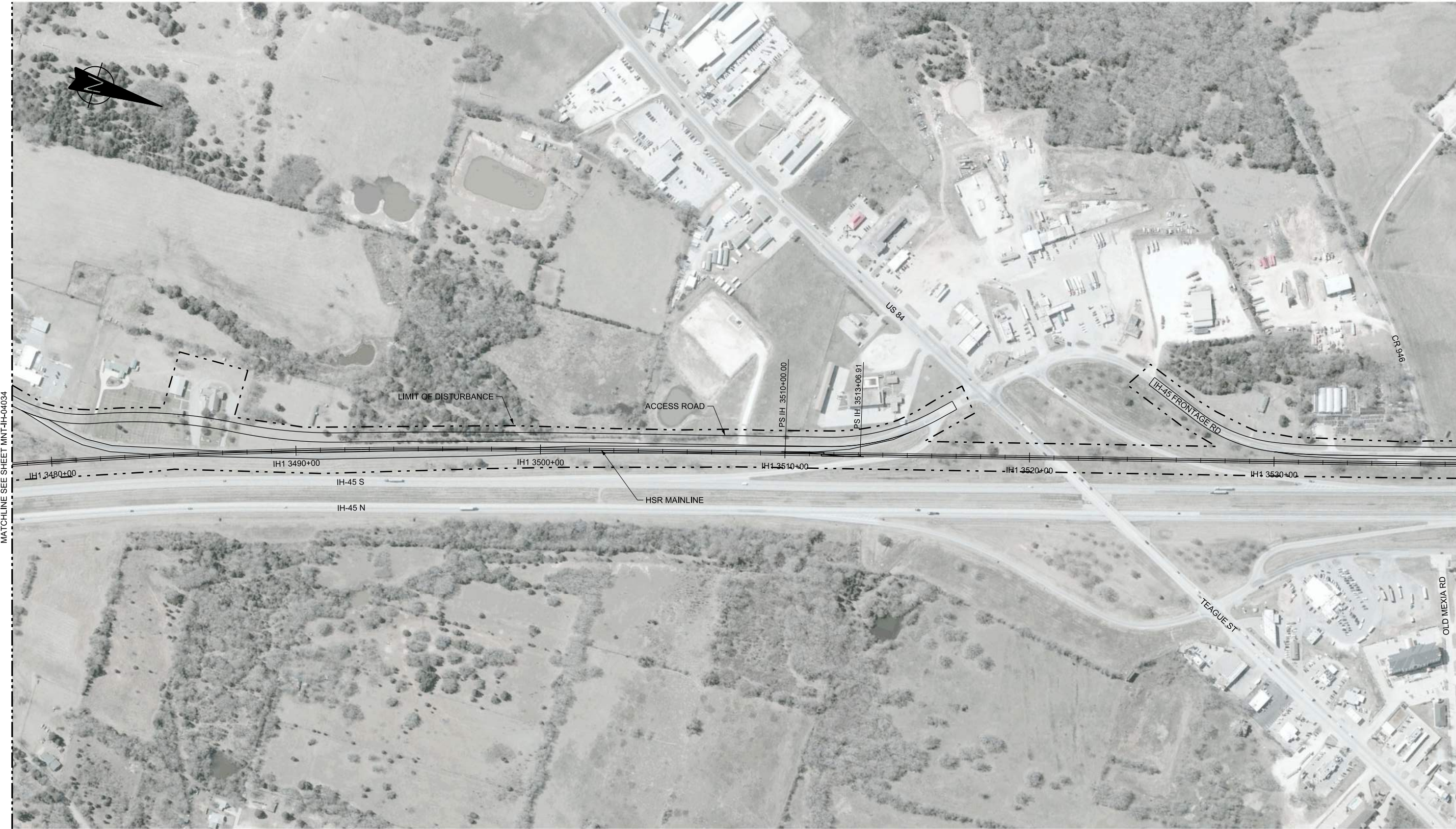
**TEXAS CENTRAL**

1409 South Lamar Street, Suite 1022, Dallas, Texas 75215

Drawing Title

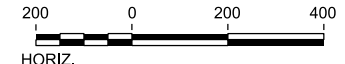
**IH (45) SEGMENT  
MAINTENANCE FACILITIES  
MOW FACILITY IH-2  
LAYOUT - SHEET 2 OF 3**

Scale AS SHOWN		
Drawing Status <b>FINAL DRAFT</b>		
Job No 234180	Drawing No MNT-IH-04034	Rev 01



MATCHLINE SEE SHEET MNT-IH-04034

NOTES:  
1. SEE SHEET MNT-00-02002 FOR MOW NOTES.



REV	DATE	BY	CHK	APP	DESCRIPTION

DESIGNED BY  
**T. WAGNER**

DRAWN BY  
**A. LUKACS**

CHECKED BY  
**M. SPIRIDIGLIOZZI**

IN CHARGE  
**C. TAYLOR**

DATE  
**09/15/2017**

**ARUP**

Arup Texas, Inc.  
10370 Richmond Ave., Suite 475  
Houston, Texas 77042 USA  
Tel (713) 783 2787 Fax (713) 343 1467  
www.arup.com  
Texas Registered Engineering Firm: F-1990

**FREESSE & NICHOLS**

2711 North Haskell Ave., Suite 3300  
Dallas, Texas 75204  
Tel (214) 217 2200 Fax (214) 217 2201  
www.freese.com  
Texas Registered Engineering Firm: F-2144

Client

**TEXAS CENTRAL**

1409 South Lamar Street, Suite 1022, Dallas, Texas 75215

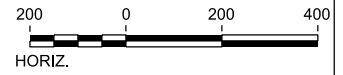
Drawing Title

**IH (45) SEGMENT  
MAINTENANCE FACILITIES  
MOW FACILITY IH-2  
LAYOUT - SHEET 3 OF 3**

Scale AS SHOWN		
Drawing Status FINAL DRAFT		
Job No 234180	Drawing No MNT-IH-04035	Rev 01



NOTES:  
1. SEE SHEET MNT-00-02002 FOR MOW NOTES.



REV	DATE	BY	CHK	APP	DESCRIPTION

DESIGNED BY  
**T. WAGNER**

DRAWN BY  
**A. LUKACS**

CHECKED BY  
**M. SPIRIDIGLIOZZI**

IN CHARGE  
**C. TAYLOR**

DATE  
**09/15/2017**



Arup Texas, Inc.  
10370 Richmond Ave., Suite 475  
Houston, Texas 77042 USA  
Tel (713) 783 2787 Fax (713) 343 1467  
www.arup.com  
Texas Registered Engineering Firm: F-1990



2711 North Haskell Ave., Suite 3300  
Dallas, Texas 75204  
Tel (214) 217 2200 Fax (214) 217 2201  
www.freese.com  
Texas Registered Engineering Firm: F-2144



1409 South Lamar Street, Suite 1022, Dallas, Texas 75215

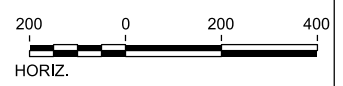
Drawing Title  
**ELLIS WEST SEGMENT  
MAINTENANCE FACILITIES  
MOW FACILITY EW-1  
LAYOUT - SHEET 1 OF 2**

Scale AS SHOWN		
Drawing Status FINAL DRAFT		
Job No 234180	Drawing No MNT-EW-04036	Rev 01



MATCHLINE SEE SHEET MNT-EW-04036

NOTES:  
 1. SEE SHEET MNT-00-02002 FOR MOW NOTES.



REV	DATE	BY	CHK	APP	DESCRIPTION

DESIGNED BY  
**T. WAGNER**

DRAWN BY  
**A. LUKACS**

CHECKED BY  
**M. SPIRIDIGLIOZZI**

IN CHARGE  
**C. TAYLOR**

DATE  
**09/15/2017**

**ARUP**

Arup Texas, Inc.  
 10370 Richmond Ave., Suite 475  
 Houston, Texas 77042 USA  
 Tel (713) 783 2787 Fax (713) 343 1467  
 www.arup.com  
 Texas Registered Engineering Firm: F-1990

**FREESSE & NICHOLS**

2711 North Haskell Ave., Suite 3300  
 Dallas, Texas 75204  
 Tel (214) 217 2200 Fax (214) 217 2201  
 www.freese.com  
 Texas Registered Engineering Firm: F-2144

Client

1409 South Lamar Street, Suite 1022, Dallas, Texas 75215

Drawing Title

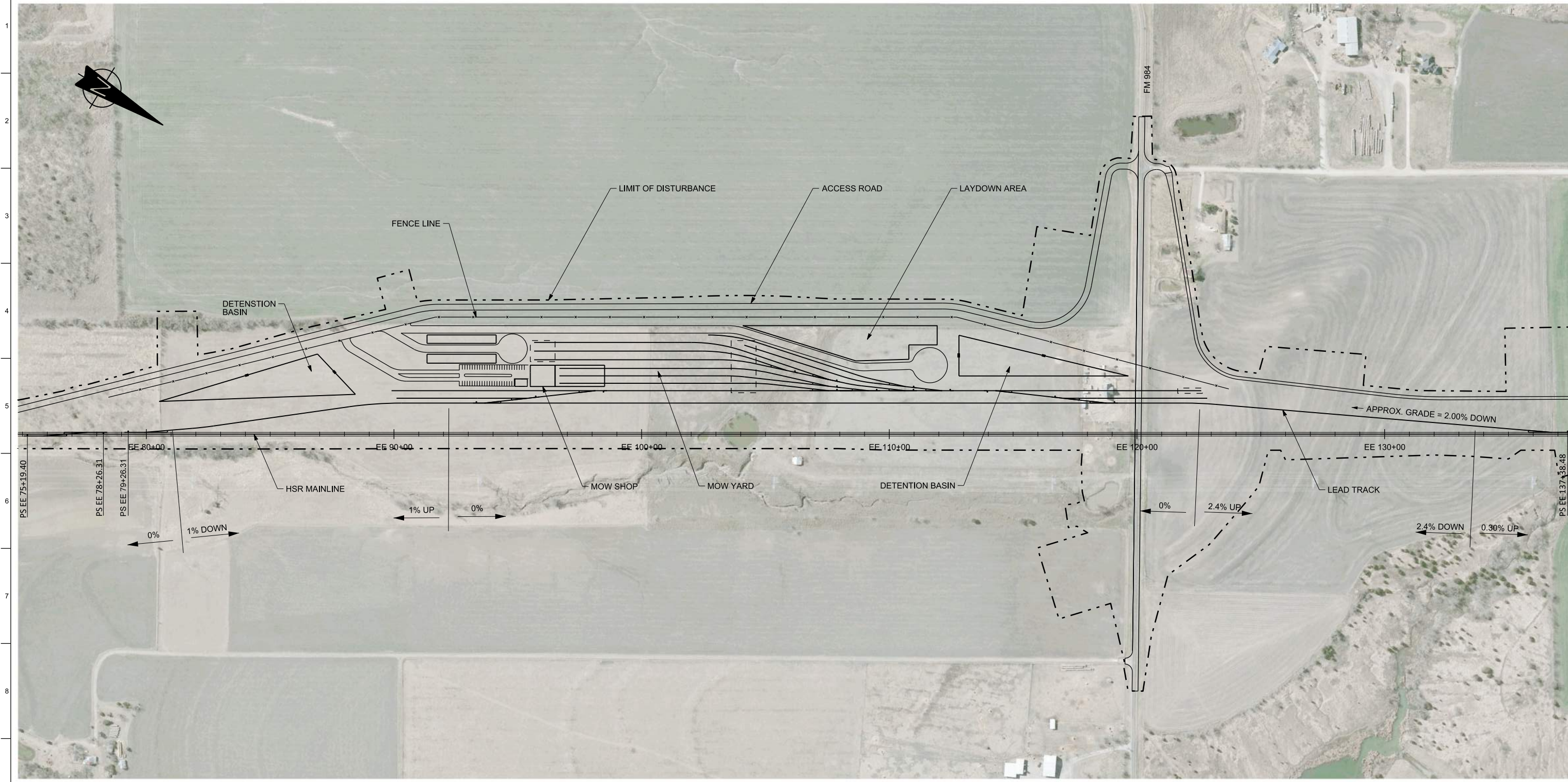
**ELLIS WEST SEGMENT  
 MAINTENANCE FACILITIES  
 MOW FACILITY EW-1  
 LAYOUT - SHEET 2 OF 2**

Scale  
AS SHOWN

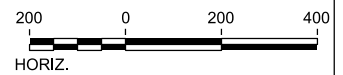
Drawing Status  
**FINAL DRAFT**

Job No 234180	Drawing No MNT-EW-04037	Rev 01
------------------	----------------------------	-----------





NOTES:  
 1. SEE SHEET MNT-00-02002 FOR MOW NOTES.



REV	DATE	BY	CHK	APP	DESCRIPTION

DESIGNED BY  
**T. WAGNER**

DRAWN BY  
**A. LUKACS**

CHECKED BY  
**M. SPIRIDIGLIOZZI**

IN CHARGE  
**C. TAYLOR**

DATE  
**09/15/2017**

**ARUP**  
 Arup Texas, Inc.  
 10370 Richmond Ave., Suite 475  
 Houston, Texas 77042 USA  
 Tel (713) 783 2787 Fax (713) 343 1467  
 www.arup.com  
 Texas Registered Engineering Firm: F-1990

**FREESSE & NICHOLS**  
 2711 North Haskell Ave., Suite 3300  
 Dallas, Texas 75204  
 Tel (214) 217 2200 Fax (214) 217 2201  
 www.freese.com  
 Texas Registered Engineering Firm: F-2144

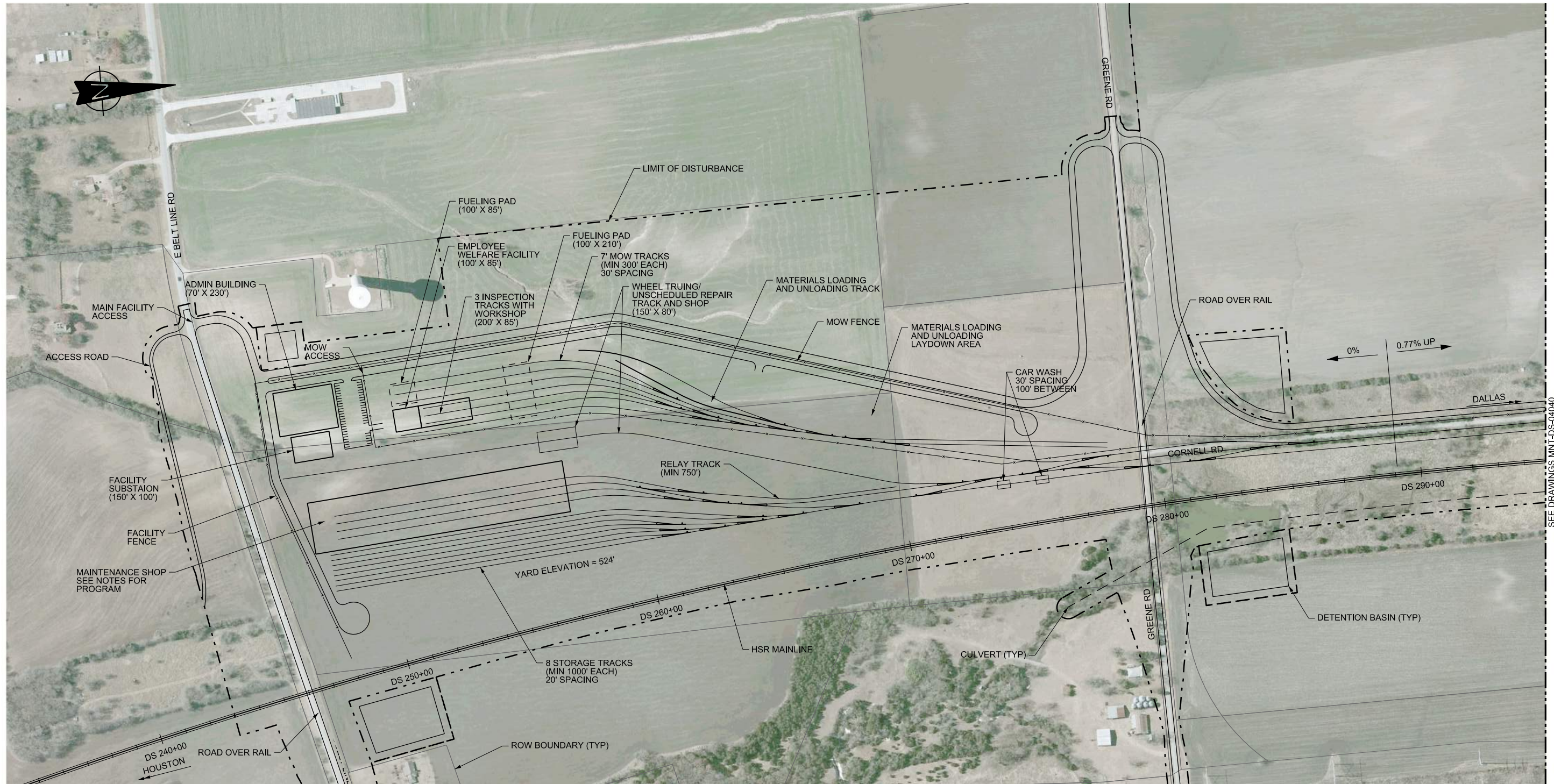
Client  
  
**TEXAS CENTRAL**  
 1409 South Lamar Street, Suite 1022, Dallas, Texas 75215

Drawing Title  
**ELLIS EAST SEGMENT  
 MAINTENANCE FACILITIES  
 MOW FACILITY EE-1  
 LAYOUT**

Scale  
**AS SHOWN**

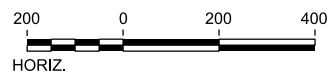
Drawing Status  
**FINAL DRAFT**

Job No	Drawing No	Rev
234180	MNT-EE-04038	01



NOTES:

- HSR MAINLINE ALIGNMENT AND STATIONING SHOWN FOR DALLAS SEGMENT.
- SINGLE TRAIN PER STORAGE TRACK WITH OVERRUN PROTECTION (LENGTH 1000'). STORAGE YARD TRACK SPACING IF 20' ON CENTER PROVIDES FOR OCS COLUMNS AND BOARDING PLATFORMS AT EACH END OF THE TRAIN.
- TMF DIRECTLY ACCESSIBLE FROM EITHER TERMINAL WITHOUT RELAY ON MAIN LINE. RELAY TRACK OFF OF MAINLINE FOR ACCESS TO TMF FROM DISTANT TERMINAL. DOUBLE TRACK TMF CONNECTIONS WITH ASSOCIATED MAINLINE CROSSOVERS TO ALLOW FOR OPERATIONAL FLEXIBILITY.
- CAR WASH LOCATION PROVIDES FLEXIBILITY TO/FROM SHOP AND YARD.
- NO. 16 TURNOUTS USED FOR FLAT JUNCTION TURNOUTS AND ASSOCIATED CROSSOVERS ON MAINLINE TRACKS. NO. 16 TURNOUTS USED FOR DIVERGING MOVE SPEEDS OF 43.5 MPH (70KM/HR).
- IN THE YARD, SHOP, AND MOW, SHUNTING SPEED SHALL BE RESTRICTED TO 18.6 MPH (30KM/HR). NO. 9 TURNOUTS USED THROUGHOUT YARD, SHOP AND MOW. NO. 12 TURNOUTS MAY BE USED BASED ON GEOMETRIC CONSTRAINTS.
- MAINTENANCE SHOP PROGRAM
  - SHOP APPROXIMATELY 235,000 SF
  - 4 SHOP TRACKS
  - 30' TRACK SPACING
  - RELAY TRACK FOR MOVEMENT OF TRAINS TO AND FROM HEAVY REPAIR TRACK WITHOUT OVERHEAD CATENARY
  - MINIMUM SHOP TRACK LENGTH OF 850' PROVIDED
- INSPECTION TRACKS IN MAINTENANCE SHOP INCLUDE PIT FOR UNDERCAR INSPECTION. FLOOR LEVEL ACCESS, AND ROOF LEVEL ACCESS.
- TMF DRAWINGS SHOW LOD REQUIRED FOR DEVELOPMENT OF TMF. INCLUDING ROADS, DRAINAGE, UTILITIES, AND OTHER WORKS.



REV	DATE	BY	CHK	APP	DESCRIPTION

DESIGNED BY  
**M.SPIRIDIGLIOZZI**

DRAWN BY  
**M.SPIRIDIGLIOZZI**

CHECKED BY  
**T. WAGNER**

IN CHARGE  
**C. TAYLOR**

DATE  
**09/15/2017**



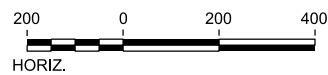
Drawing Title  
**DALLAS SEGMENT  
MAINTENANCE FACILITIES  
DALLAS SOUTH TMF  
SHEET 1 OF 3**

Scale AS SHOWN		
Drawing Status FINAL DRAFT		
Job No 234180	Drawing No MNT-DS-04039	Rev

SEE DRAWINGS MNT-DS-04040



NOTES:  
 1. SEE MNT-DS-04039 FOR NOTES.  
 2. ATC/SHUNTING SWITCHOVER REQUIRED TO SUPPORT CHANGE TO SHUNTING MODE FOR SAFE OPERATIONS INTO THE TMF. ATC/SHUNTING SWITCHOVER MIN REQUIRED LENGTH IS 1,000'. HSR MAINLINE ALIGNMENT AND STATIONING SHOWN FOR DALLAS SEGMENT.  
 3. OCS CHANGEOVER AREA REQUIRED TO SECTIONALIZE MAINLINE HSR AND TMF OVERHEAD CATENARY TRACTION POWER FOR SAFETY. OCS CHANGEOVER MIN REQUIRED LENGTH 2,625' (AT 43.5 MPH), MINIMUM CHANGEOVER LENGTH PROVIDED IS 3595'.



REV	DATE	BY	CHK	APP	DESCRIPTION

DESIGNED BY  
**M.SPIRIDIGLIOZZI**  
 DRAWN BY  
**M.SPIRIDIGLIOZZI**  
 CHECKED BY  
**T. WAGNER**  
 IN CHARGE  
**C. TAYLOR**  
 DATE  
**09/15/2017**



Drawing Title  
**DALLAS SEGMENT  
 MAINTENANCE FACILITIES  
 DALLAS SOUTH TMF  
 SHEET 2 OF 3**

Scale AS SHOWN		
Drawing Status <b>FINAL DRAFT</b>		
Job No 234180	Drawing No MNT-DS-04040	Rev

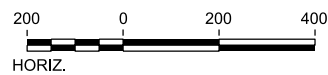
SEE DRAWING MNT-DS-040389

SEE DRAWING MNT-DS-04041



SEE DRAWING MNT-DS-04040

NOTES:  
1. SEE MNT-DS-04039 FOR NOTES.



REV	DATE	BY	CHK	APP	DESCRIPTION

DESIGNED BY  
**M.SPIRIDIGLIOZZI**

DRAWN BY  
**M.SPIRIDIGLIOZZI**

CHECKED BY  
**T. WAGNER**

IN CHARGE  
**C. TAYLOR**

DATE  
**09/15/2017**

**ARUP**

Arup Texas, Inc.  
10370 Richmond Ave., Suite 475  
Houston, Texas 77042 USA  
Tel (713) 783 2787 Fax (713) 343 1467  
www.arup.com  
Texas Registered Engineering Firm: F-1990

**FREESSE & NICHOLS**

2711 North Haskell Ave., Suite 3300  
Dallas, Texas 75204  
Tel (214) 217 2200 Fax (214) 217 2201  
www.freesse.com  
Texas Registered Engineering Firm: F-2144

Client

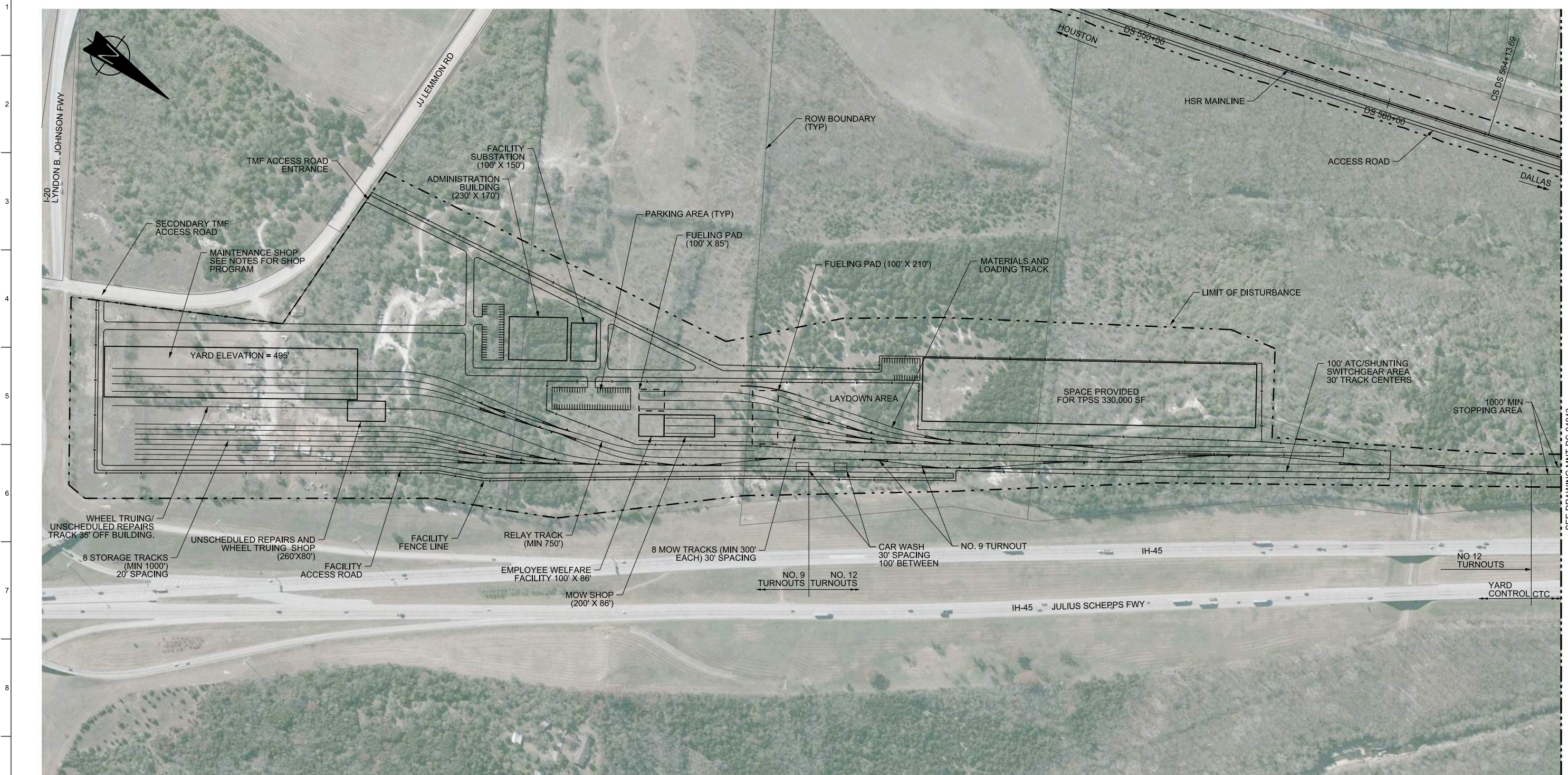
**TEXAS CENTRAL**

1409 South Lamar Street, Suite 1022, Dallas, Texas 75215

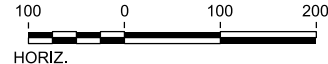
Drawing Title

**DALLAS SEGMENT  
MAINTENANCE FACILITIES  
DALLAS SOUTH TMF  
SHEET 3 OF 3**

Scale AS SHOWN		
Drawing Status FINAL DRAFT		
Job No 234180	Drawing No MNT-DS-04041	Rev



- NOTES:
- HSR MAINLINE ALIGNMENT AND STATIONING SHOWN FOR DALLAS SEGMENT.
  - SINGLE TRAIN PER STORAGE TRACK WITH OVERRUN PROTECTION (LENGTH 1000'). STORAGE YARD TRACK SPACING IF 20' ON CENTER PROVIDES FOR OCS COLUMNS AND BOARDING PLATFORMS AT EACH END OF THE TRAIN.
  - TMF DIRECTLY ACCESSIBLE FROM EITHER TERMINAL WITHOUT RELAY OR MAIN LINE. RELAY TRACK OFF OF MAINLINE FOR ACCESS TO TMF FROM DISTANT TERMINAL. DOUBLE TRACK TMF CONNECTIONS WITH ASSOCIATED MAINLINE CROSSOVERS TO ALLOW FOR OPERATIONAL FLEXIBILITY.
  - CAR WASH LOCATION PROVIDES FLEXIBILITY TO/FROM SHOP AND YARD.
  - NO. 16 TURNOUTS USED FOR FLAT JUNCTION AND ASSOCIATED CROSSOVERS ON MAINLINE TRACKS. NO. 16 TURNOUTS USED FOR DIVERGING MOVE SPEEDS OF 43.5 MPH (70KM/HR).
  - IN THE YARD, SHOP, AND MOW, SHUNTING SPEED SHALL BE RESTRICTED TO 18.6 MPH (30KM/HR). NO. 9 TURNOUTS USED THROUGHOUT YARD, SHOP AND MOW. NO. 12 TURNOUTS MAY BE USED BASED ON GEOMETRIC CONSTRAINTS.
  - SHOP PROGRAM
    - SHOP APPROXIMATELY 200,000 SF
    - 4 SHOP TRACKS
    - 30' TRACK SPACING
    - RELAY TRACK FOR MOVEMENT OF TRAINS TO AND FROM HEAVY REPAIR TRACK WITHOUT OVERHEAD CATENARY
    - MINIMUM SHOP TRACK LENGTH OF 850' PROVIDED
  - INSPECTION TRACKS IN SHOP INCLUDE PIT FOR UNDERCAR INSPECTION. FLOOR LEVEL ACCESS, AND ROOF LEVEL ACCESS.
  - TMF DRAWINGS SHOW LOD REQUIRED FOR DEVELOPMENT OF TMF, INCLUDING ROADS, DRAINAGE, UTILITIES, AND OTHER WORKS. ROADWAY WORKS NOT SHOWN.



REV	DATE	BY	CHK	APP	DESCRIPTION

DESIGNED BY  
**M. SPIRIDIGLIOZZI**

DRAWN BY  
**R. GIBBINS**

CHECKED BY  
**T. WAGNER**

IN CHARGE  
**C. TAYLOR**

DATE  
**09/15/2017**

**ARUP**

Arup Texas, Inc.  
10370 Richmond Ave., Suite 475  
Houston, Texas 77042 USA  
Tel (713) 783 2787 Fax (713) 343 1467  
www.arup.com  
Texas Registered Engineering Firm: F-1990

**FRESE & NICHOLS**

2711 North Haskell Ave., Suite 3300  
Dallas, Texas 75204  
Tel (214) 217 2200 Fax (214) 217 2201  
www.freese.com  
Texas Registered Engineering Firm: F-2144

Client

**TEXAS CENTRAL**

1409 South Lamar Street, Suite 1022, Dallas, Texas 75215

Drawing Title

**DALLAS SEGMENT  
MAINTENANCE FACILITIES  
DALLAS NORTH TMF  
SHEET 1 OF 2**

Scale  
AS SHOWN

Drawing Status  
**FINAL DRAFT**

Job No <b>234180</b>	Drawing No <b>MNT-DS-04042</b>	Rev
-------------------------	-----------------------------------	-----

1  
2  
3  
4  
5  
6  
7  
8  
9  
10



- NOTES:
- SEE SHEET MNT-DS-04042 FOR ADDITIONAL NOTES.
  - ATC/SHUNTING SWITCHOVER REQUIRED TO SUPPORT CHANGE TO SHUNTING MODE FOR SAFE OPERATIONS INTO THE TMF. ATC/SHUNTING SWITCHOVER MIN REQUIRED LENGTH IS 1,000'.
  - OCS CHANGEOVER AREA REQUIRED TO SECTIONALIZE MAINLINE HSR AND TMF OVERHEAD CATENARY TRACTION POWER FOR SAFETY. OCS CHANGEOVER MIN REQUIRED LENGTH 2,625' (AT 43.5 MPH). MINIMUM CHANGEOVER LENGTH PROVIDED IS 3595'.

REV	DATE	BY	CHK	APP	DESCRIPTION

DESIGNED BY  
**T. WAGNER**

DRAWN BY  
**R. GIBBINS**

CHECKED BY  
**M. SPIRIDIGLIOZZ**

IN CHARGE  
**C. TAYLOR**

DATE  
**09/15/2017**

**ARUP**

Arup Texas, Inc.  
10370 Richmond Ave., Suite 475  
Houston, Texas 77042 USA  
Tel (713) 783 2787 Fax (713) 343 1467  
www.arup.com  
Texas Registered Engineering Firm: F-1990

**FREESSE & NICHOLS**

2711 North Haskell Ave., Suite 3300  
Dallas, Texas 75204  
Tel (214) 217 2200 Fax (214) 217 2201  
www.freesse.com  
Texas Registered Engineering Firm: F-2144

Client

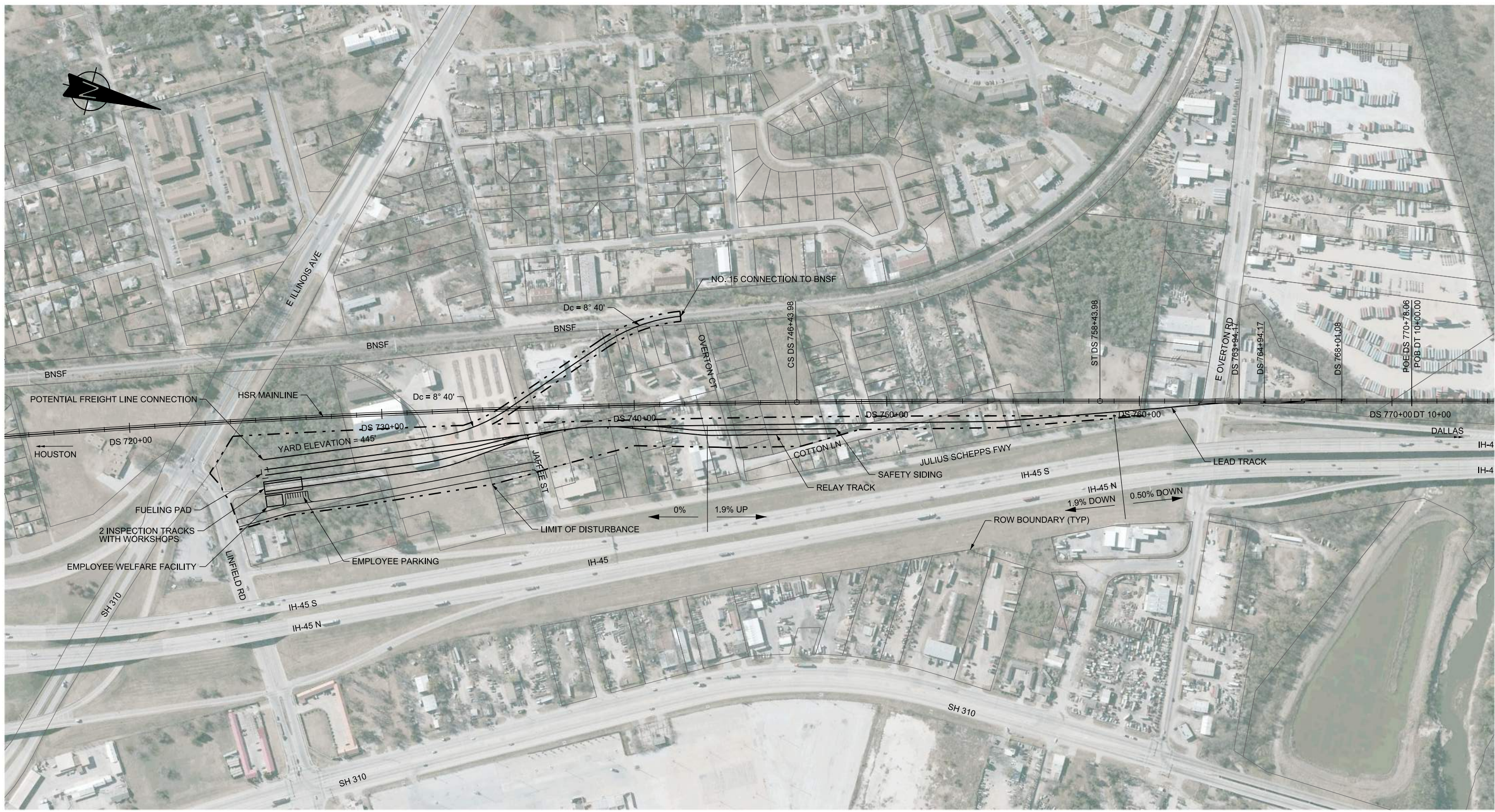
**TEXAS CENTRAL**

1409 South Lamar Street, Suite 1022, Dallas, Texas 75215

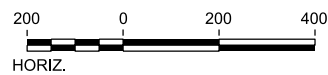
Drawing Title

**DALLAS SEGMENT  
MAINTENANCE FACILITIES  
DALLAS NORTH TMF  
SHEET 2 OF 2**

Scale <b>AS SHOWN</b>		
Drawing Status <b>FINAL DRAFT</b>		
Job No <b>234180</b>	Drawing No <b>MNT-DS-04043</b>	Rev



NOTES:  
 1. SEE SHEET MNT-00-02002 FOR MOW NOTES.



REV	DATE	BY	CHK	APP	DESCRIPTION

DESIGNED BY  
**M.SPIRIDIGLIOZZI**  
 DRAWN BY  
**M.SPIRIDIGLIOZZI**  
 CHECKED BY  
**T. WAGNER**  
 IN CHARGE  
**C. TAYLOR**  
 DATE  
**09/15/2017**

**ARUP**  
 Arup Texas, Inc.  
 10370 Richmond Ave., Suite 475  
 Houston, Texas 77042 USA  
 Tel (713) 783 2787 Fax (713) 343 1467  
 www.arup.com  
 Texas Registered Engineering Firm: F-1990

**FREESSE & NICHOLS**  
 2711 North Haskell Ave., Suite 3300  
 Dallas, Texas 75204  
 Tel (214) 217 2200 Fax (214) 217 2201  
 www.freesse.com  
 Texas Registered Engineering Firm: F-2144

Client  
  
**TEXAS CENTRAL**  
 1409 South Lamar Street, Suite 1022, Dallas, Texas 75215

Drawing Title  
**DALLAS SEGMENT  
 MAINTENANCE FACILITIES  
 MOW FACILITY DS-3  
 LAYOUT**

Scale  
**AS SHOWN**  
 Drawing Status  
**FINAL DRAFT**  
 Job No. 234180 Drawing No. MNT-DS-04044 Rev.