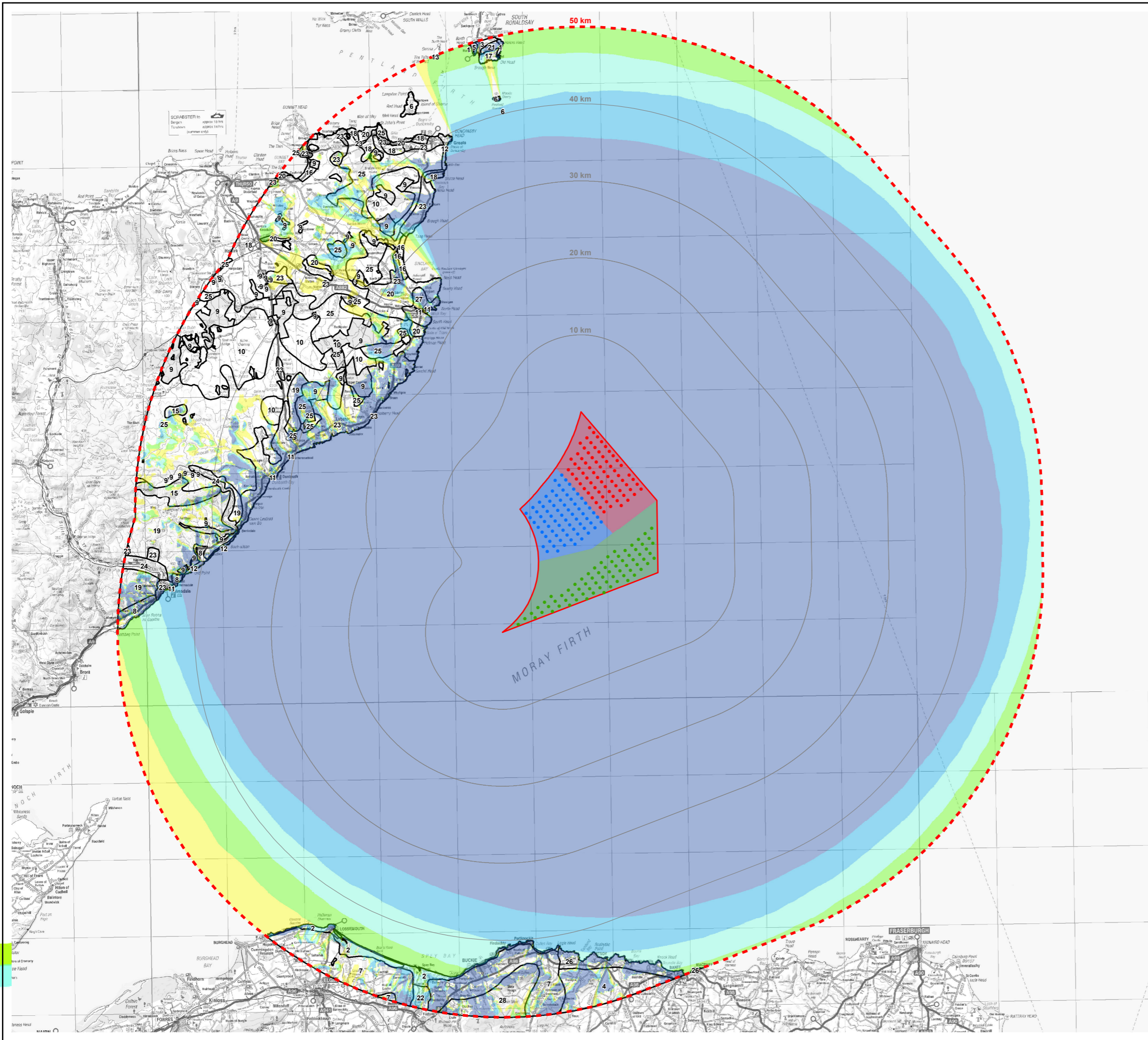


This map contains Ordnance Survey data © Crown copyright and database right, 2012. This document is the property of contractors and sub-contractors and shall not be reproduced nor transmitted without prior written approval. Moray Offshore Renewables Ltd © 2012.



Moray Offshore Renewables Ltd

KEY

Turbine Layout Scenario 4c:

- Telford 7MW Turbines (204m)
- Stevenson 7MW Turbines (204m)
- MacColl 7MW Turbines (204m)

- Telford Development Area
- Stevenson Development Area
- MacColl Development Area
- Eastern Development Area
- 10km Distance Radii
- 50km Study Area Boundary

- Landscape Character**
- | | |
|---------------------------------|-----------------------------------|
| 1 Cliff Landscapes | 14 Inland Lochs |
| 2 Coastal | 15 Lone Mountains |
| 3 Coastal Basins | 16 Long Beaches Dunes & Links |
| 4 Coastal Farmland | 17 Low Island Pastures |
| 5 Coastal Hills & Heaths | 18 Mixed Agriculture & Settlement |
| 6 Coastal Island | 19 Moorland Slopes & Hills |
| 7 Coastal Lowlands | 20 Open Intensive Farmland |
| 8 Coastal Shelf | 21 Plateau Heaths & Pasture |
| 9 Coniferous Woodland | 22 River Valleys |
| 10 Flat Peatland | 23 Small Farms & Crofts |
| 11 Harbour | 24 Strath |
| 12 High Cliffs & Sheltered Bays | 25 Sweeping Moorland |
| 13 Hoims | 26 The Coast |
| | 27 Town |
| | 28 Uplands |

Blade Tip ZTV (204m)

No. of Visible Turbines

- 0
- 1 - 50
- 51 - 100
- 101 - 150
- 151 - 200
- 201 - 216

Horizontal Scale: 1:475,000 A3 Chart
 0 10,000 20,000 Meters

Geodetic Parameters: WGS84 UTM Zone 30N

Produced: LA
 Reviewed: SM
 Approved: SM

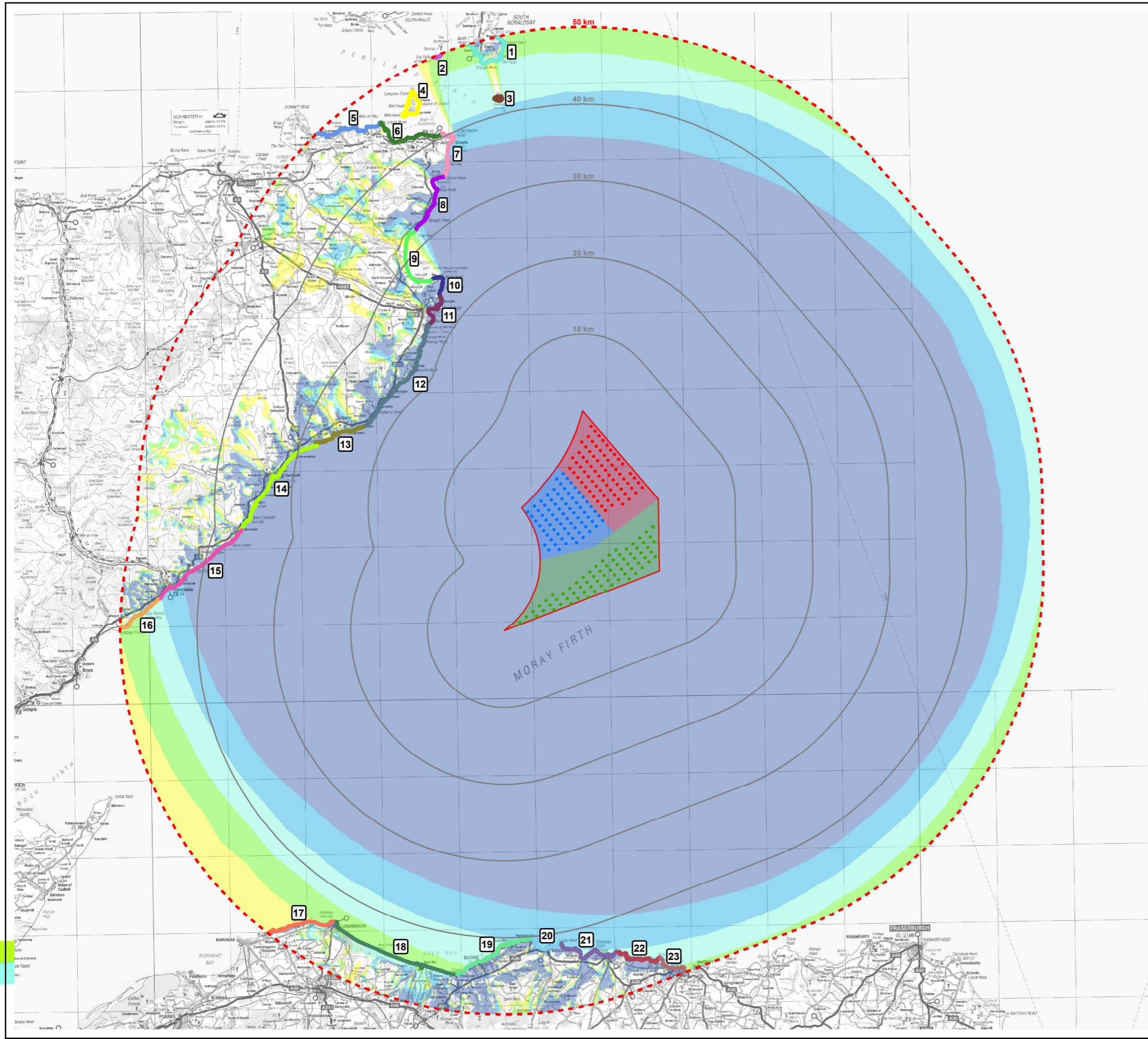
Date: 09/07/2012 Revision: B

REF: 8460001-PPW0201-OPE-MAP-031

Figure 8.4-9
Landscape Character
with ZTV

Moray Offshore
 Renewables Ltd

© SeaZone Solutions Limited, 2005, [01.2009.001, 02201.1.009]. This map contains Ordnance Survey data © Crown copyright and database right 2012. Moray Offshore Renewables Ltd © 2012. This document is the property of contractors and sub-contractors and shall not be reproduced nor transmitted without prior written approval.



Moray Offshore Renewables Ltd

- KEY**
- Turbine Layout Scenario 4c:
- Telford 7MW Turbines (204m)
 - Stevenson 7MW Turbines (204m)
 - MacColl 7MW Turbines (204m)
 - Telford Development Area
 - Stevenson Development Area
 - MacColl Development Area
 - Eastern Development Area
 - 10km Distance Radii
 - 50km Study Area Boundary
- Coastal Character Areas**
- 1 South Ronaldsay
 - 2 Swona Island
 - 3 Pentland Skerries
 - 4 Island of Stroma
 - 5 Scarfskerry
 - 6 Gills Bay & John O'Groats
 - 7 Duncansby Head
 - 8 Freswick Bay & Nybster Coast
 - 9 Sinclair's Bay
 - 10 Noss Head
 - 11 Wick Bay
 - 12 Sarclet Head
 - 13 Lybster Bay
 - 14 Dunbeath Bay
 - 15 Helmsdale to Berriedale Coastal Shelf
 - 16 Brora to Helmsdale Deposition Coast
 - 17 Lossiemouth to Burghead Coast
 - 18 Spey Bay
 - 19 Portgordon to Portnockie Coast
 - 20 Cullen Bay
 - 21 Sandend Bay
 - 22 Boyne Bay
 - 23 Boyndie Bay

Blade Tip ZTV (204m)

No. of Visible Turbines

0	101 - 150
1 - 50	151 - 200
51 - 100	201 - 216

Horizontal Scale: 1:475,000 A3 Chart
 0 10,000 20,000 Meters

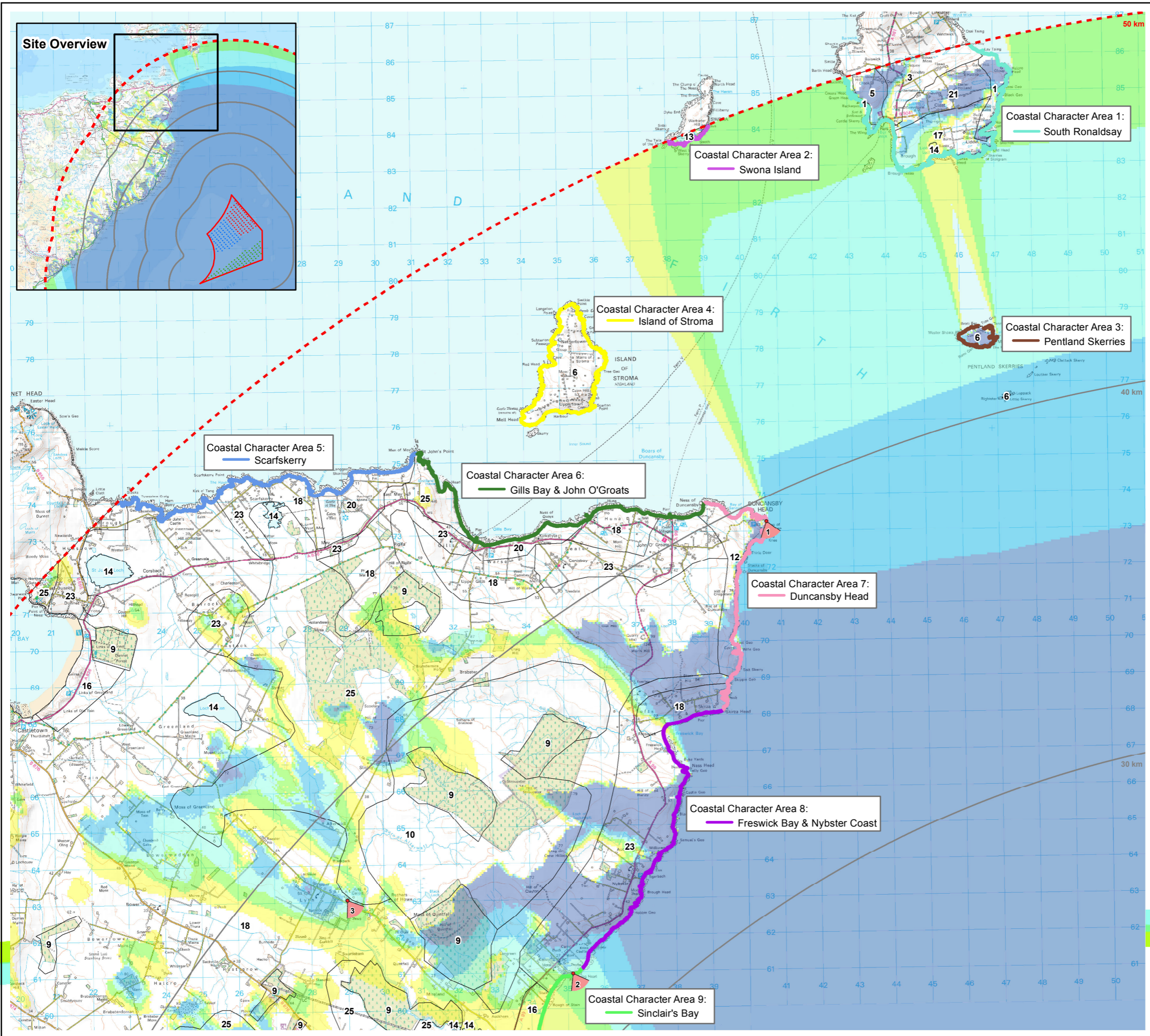
Geodetic Parameters: WGS84 UTM Zone 30N

Produced: LA
 Reviewed: SM
 Approved: SM

Date: 09/07/2012 Revision: B
 REF: 8460001-PPW0201-OPE-MAP-032

Figure 8.4-10
Coastal Character Areas
with ZTV

Moray Offshore
 Renewables Ltd



Moray Offshore Renewables Ltd

- KEY**
- Turbine Layout Scenario 4c:
- Telford 7MW Turbines (204m)
 - Stevenson 7MW Turbines (204m)
 - MacColl 7MW Turbines (204m)
 - Eastern Development Area
 - 10km Distance Radii
 - 50km Study Area Boundary
 - Landscape Character *
 - ▽ Viewpoint Location **

- Coastal Character Areas**
- 1 South Ronaldsay
 - 2 Swona Island
 - 3 Pentland Skerries
 - 4 Island of Stroma
 - 5 Scarfskerry
 - 6 Gills Bay & John O'Groats
 - 7 Duncansby Head
 - 8 Freswick Bay & Nybster Coast
 - 9 Sinclair's Bay

Blade Tip ZTV (204m)

No. of Visible Turbines

0	101 - 150
1 - 50	151 - 200
51 - 100	201 - 216

Note:
 * Landscape types listed in Figure 5.4.2
 ** Viewpoint locations listed in Figure 5.4.7

Horizontal Scale: 1:100,000 A3 Chart
 0 2,500 5,000 Meters

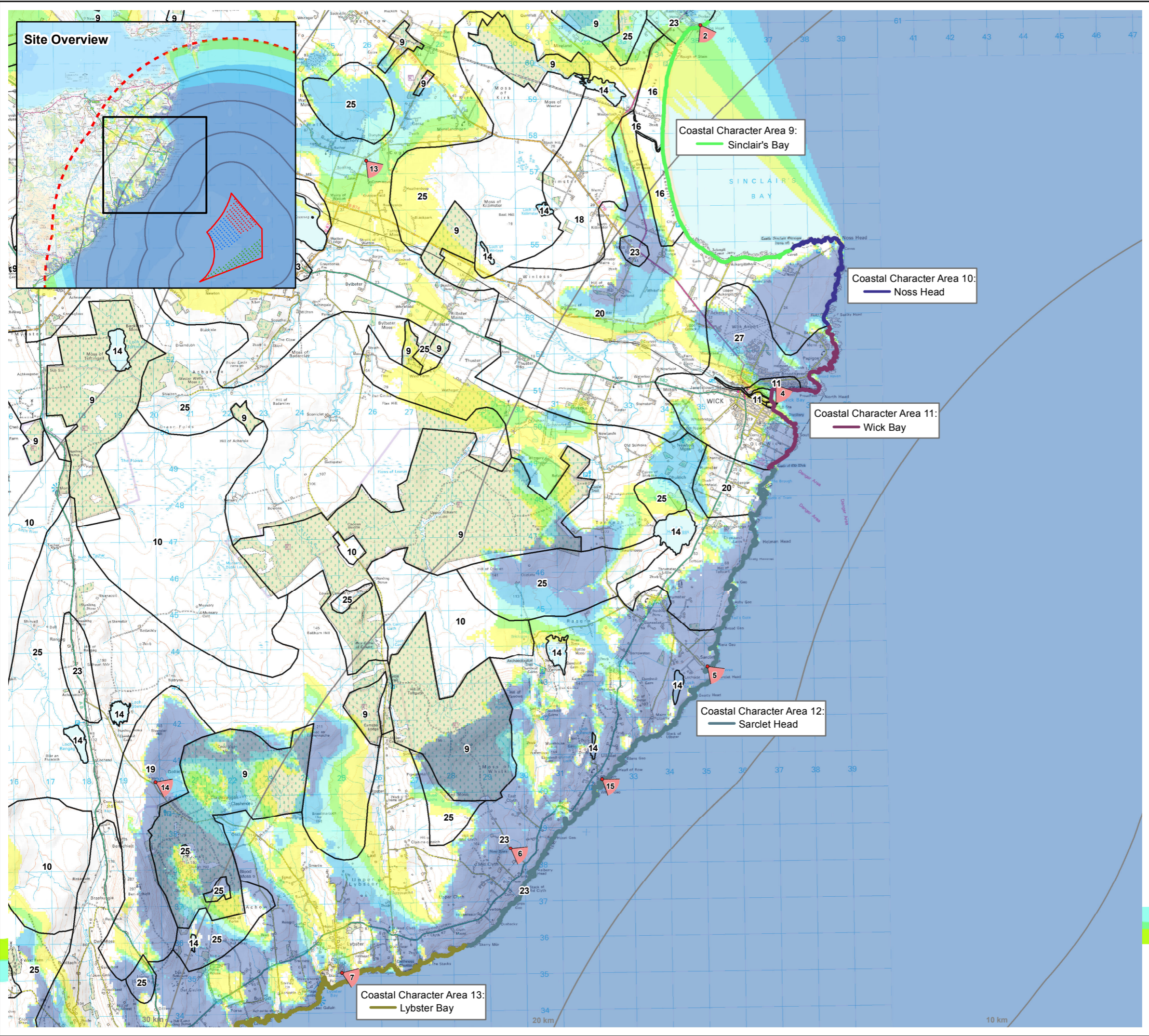
Geodetic Parameters: WGS84 UTM Zone 30N

Produced: TR
 Reviewed: SM
 Approved: SM

Date: 09/07/2012 Revision: B
 REF: 8460001-PPW0201-OPE-MAP-033

Figure 8.4-10a
Coastal Character Areas
with ZTV (Caithness North)
 Moray Offshore
 Renewables Ltd

© SeaZone Solutions Limited, 2005, [012009.001, 02201.009]. Reproduced from Ordnance Survey digital map data © Crown copyright 2012. All rights reserved. License number 100050437 (40072151). Moray Offshore Renewables Ltd © 2012. This document is the property of contractors and sub-contractors and shall not be reproduced nor transmitted without prior written approval.



Moray Offshore Renewables Ltd

KEY

- Turbine Layout Scenario 4c:
- Telford 7MW Turbines (204m)
 - Stevenson 7MW Turbines (204m)
 - MacColl 7MW Turbines (204m)
 - Eastern Development Area
 - 10km Distance Radii
 - 50km Study Area Boundary
 - Landscape Character *
 - △ Viewpoint Location **

Coastal Character Areas

- Sinclair's Bay
- Noss Head
- Wick Bay
- Sarclet Head
- Lybster Bay

Blade Tip ZTV (204m)
No. of Visible Turbines

□ 0	□ 101 - 150
□ 1 - 50	□ 151 - 200
□ 51 - 100	□ 201 - 216

Note:
* Landscape types listed in Figure 5.4.2
** Viewpoint locations listed in Figure 5.4.7

Horizontal Scale: 1:100,000 A3 Chart
0 2,500 5,000 Meters

Geodetic Parameters: WGS84 UTM Zone 30N

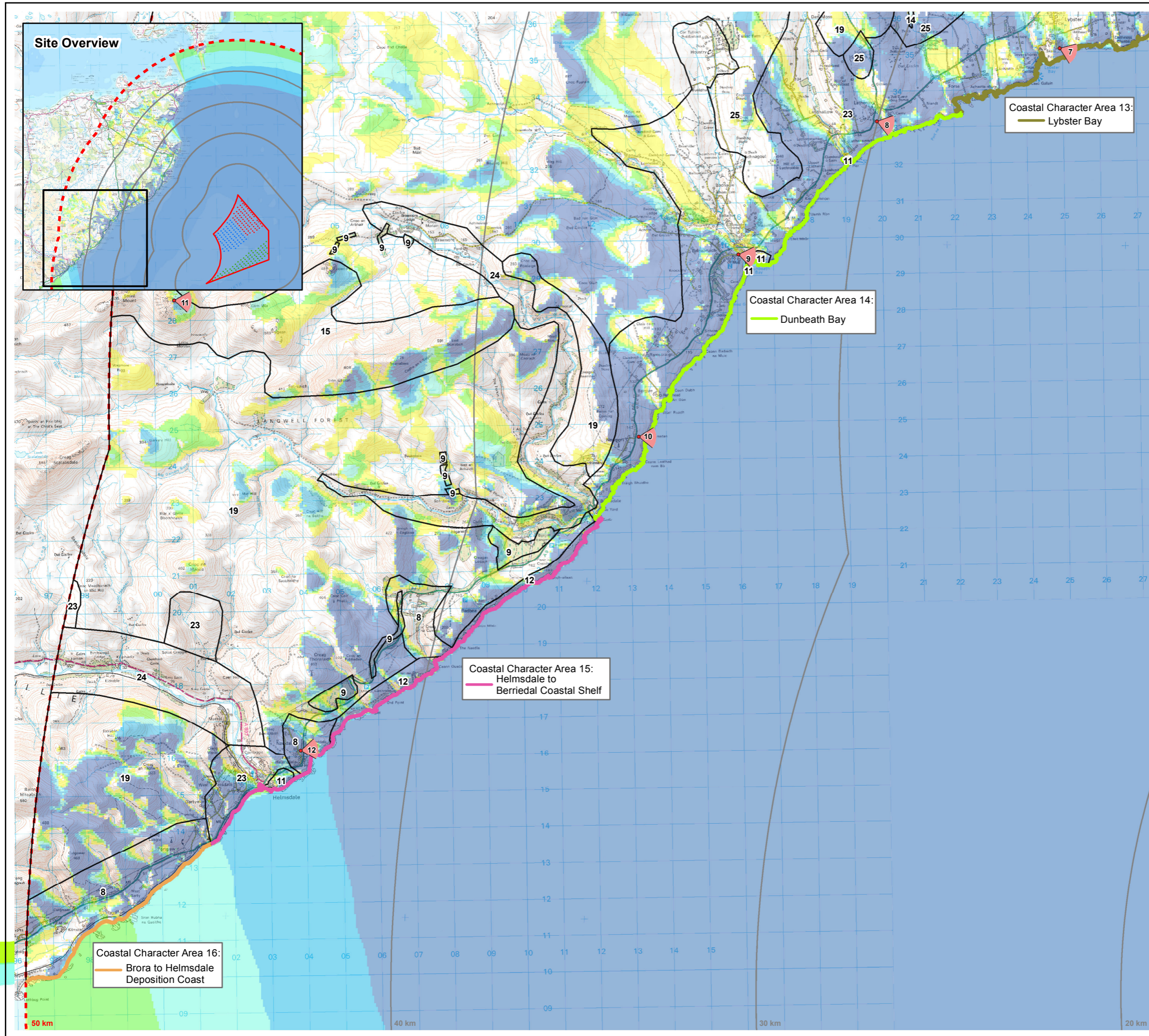
Produced: LA
Reviewed: SM
Approved: SM

Date: 09/07/2012 Revision: B
REF: 8460001-PPW0201-OPE-MAP-034

Figure 8.4-10b
Coastal Character Areas
with ZTV (Caithness East)

Moray Offshore
Renewables Ltd

© SeaZone Solutions Limited, 2005, [012009.001, 02201.1.009]. Reproduced from Ordnance Survey digital map data © Crown copyright 2012. All rights reserved. License number 100050437 (40072151). Moray Offshore Renewables Ltd © 2012. This document is the property of contractors and sub-contractors and shall not be reproduced nor transmitted without prior written approval.



Moray Offshore Renewables Ltd

KEY

Turbine Layout Scenario 4c:

- Telford 7MW Turbines (204m)
- Stevenson 7MW Turbines (204m)
- MacColl 7MW Turbines (204m)
- Eastern Development Area
- 10km Distance Radii
- 50km Study Area Boundary
- Landscape Character *
- ▽ Viewpoint Location **

Coastal Character Areas

- 13 Lybster Bay
- 14 Dunbeath Bay
- 15 Helmsdale to Berriedale Coastal Shelf
- 16 Brora to Helmsdale Deposition Coast

Blade Tip ZTV (204m)

- No. of Visible Turbines
- | | |
|------------|-------------|
| □ 0 | □ 101 - 150 |
| □ 1 - 50 | □ 151 - 200 |
| □ 51 - 100 | □ 201 - 216 |

Note:
 * Landscape types listed in Figure 5.4.2
 ** Viewpoint locations listed in Figure 5.4.7

Horizontal Scale: 1:100,000 A3 Chart
 0 2,500 5,000 Meters

Geodetic Parameters: WGS84 UTM Zone 30N

Produced: TR
 Reviewed: SM
 Approved: SM

Date: 09/07/2012 Revision: B
 REF: 8460001-PPW0201-OPE-MAP-035

Figure 8.4-10c
 Coastal Character Areas
 with ZTV (Caithness South)

Moray Offshore
 Renewables Ltd