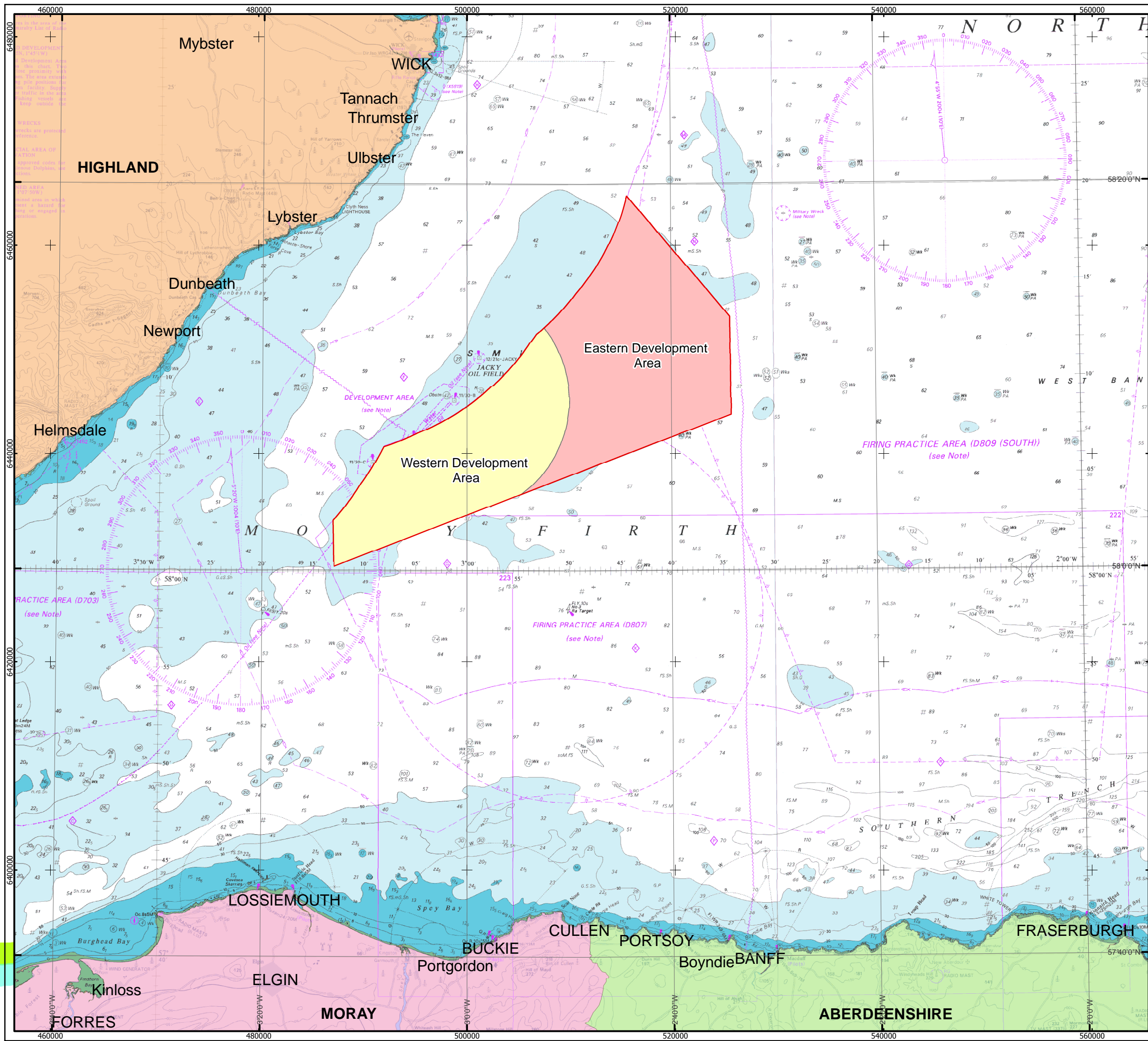


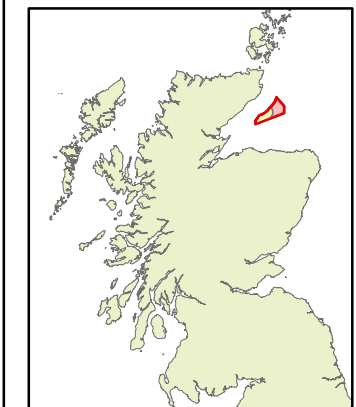
©British Crown Copyright, 2005. All Rights Reserved. SeaZone Solutions Limited, 2005 012009.001
 Moray Offshore Renewables Ltd © 2012. This document is the property of contractors and sub-contractors and shall not be reproduced nor transmitted without prior written approval.



Moray Offshore Renewables Ltd

KEY

- MORL Zone Boundary
- Western Development Area
- Eastern Development Area



Horizontal Scale: 1:350,000 A3 Chart
 0 7,500 15,000 Meters N

Geodetic Parameters: WGS84 UTM Zone 30N

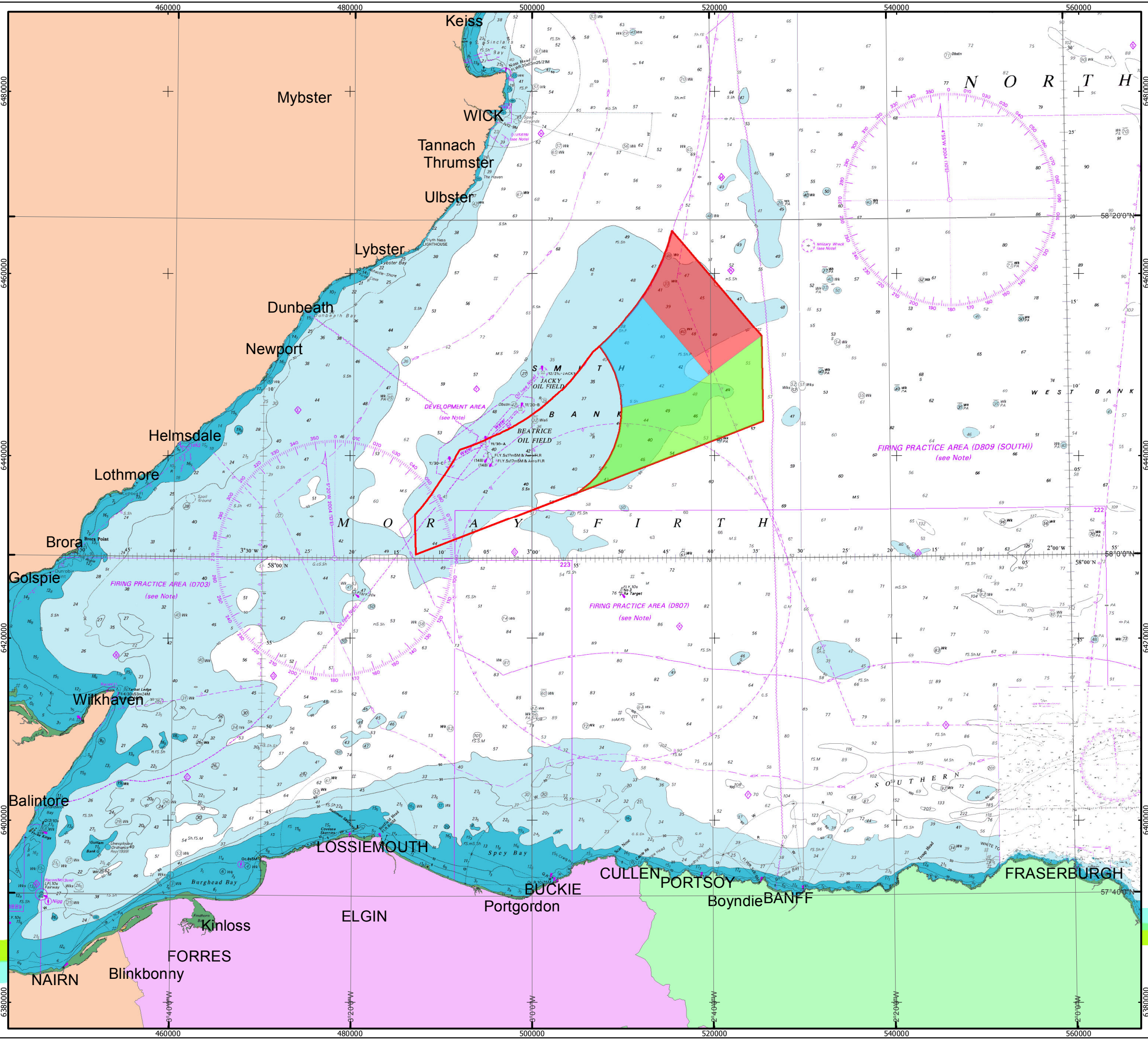
Produced: PH
 Reviewed: PC
 Approved: SP

Date: 13/06/2012 Revision: A
 REF: 8460001-PPW0201-MOR-MAP-001

**Figure 1E-1 MORL
 Development Areas**

Moray Offshore
 Renewables Ltd

Contains Ordnance Survey data © Crown Copyright & database right 2011.
 © SeaZone Solutions Limited, 2005, [022009.001, 022011.009]. This product includes mapping data licensed from Ordnance Survey (Great Britain) with the permission of HMSO. © Crown Copyright, 2006. All rights reserved.
 Moray Offshore Renewables Ltd © 2011. This document is the property of contractors and sub-contractors and shall not be reproduced nor transmitted without prior written approval.



Moray Offshore Renewables Ltd

- KEY**
- Telford Windfarm
 - Stevenson Windfarm
 - MacColl Windfarm
 - MORL Zone Boundary

Horizontal Scale: 1:400,000 A3 Chart
 0 10,000 20,000 Meters

Geodetic Parameters: WGS84 UTM Zone 30N

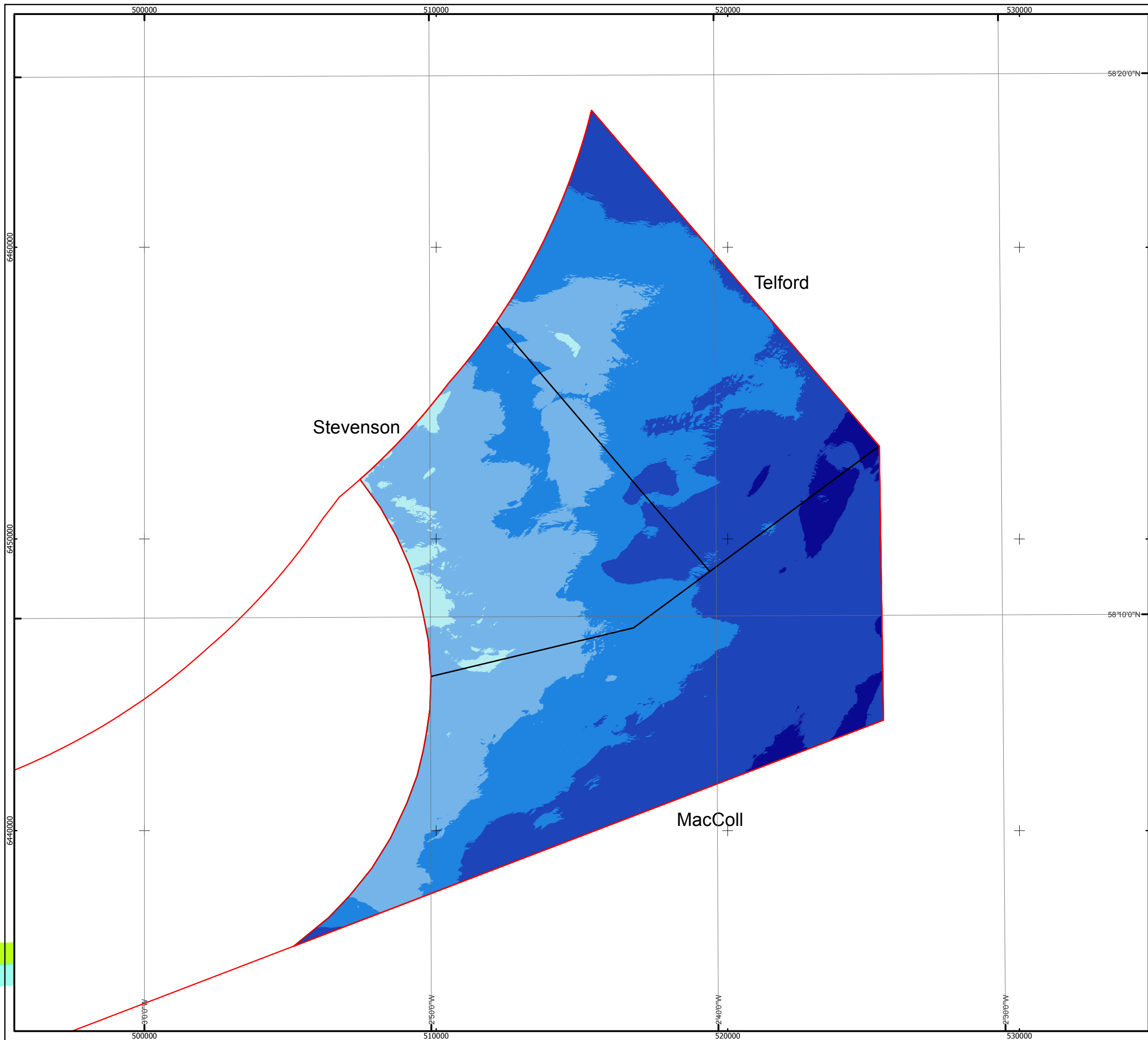
Produced: RH
 Reviewed: AH
 Approved: CR

Date: 20/12/2011 Revision: A
 REF: 8460001-PPW0201-MOR-MAP-002

Fig 1.1-2 MORL Zone Boundaries

Moray Offshore Renewables Ltd

Data from Osiris Survey
Moray Offshore Renewables Ltd © 2011. This document is the property of contractors and sub-contractors and shall not be reproduced nor transmitted without prior written approval.



Moray Offshore Renewables Ltd

KEY

MORL Zone Boundary

Depth, m (LAT)

-35- -40

-40- -45

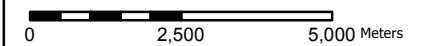
-45- -50

-50- -55

-55- -60

Horizontal Scale: 1:125,000

A3 Chart



N

Geodetic Parameters: WGS84 UTM Zone 30N

Produced: PH
Reviewed: GP
Approved: NAM

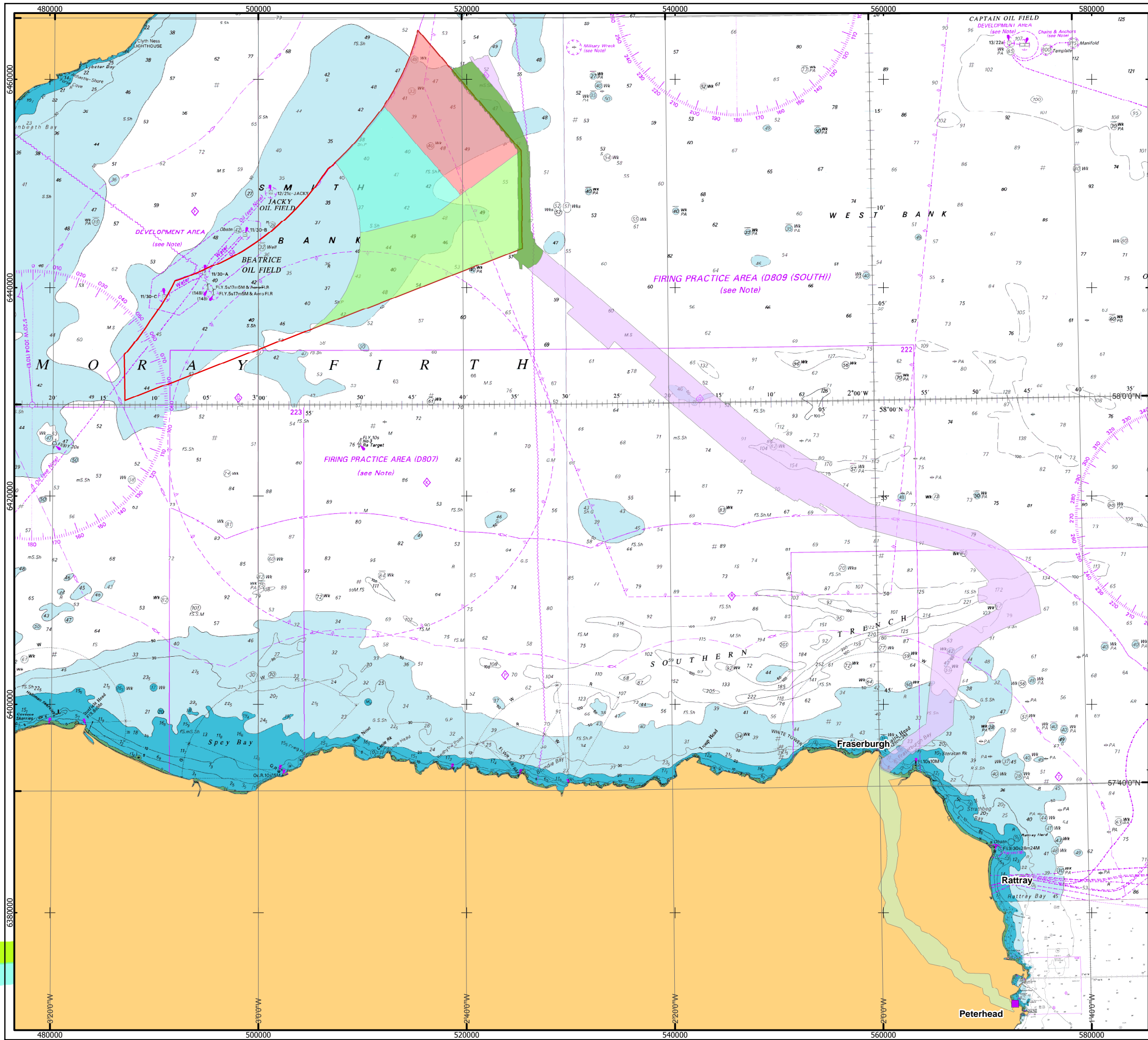
Date: 02/02/2012 Revision: A

REF: 8460001-PPW0201-MOR-MAP-003

Fig 1.1-3 Bathymetry Map
Eastern Development of the

Moray Offshore
Renewables Ltd

©British Crown Copyright, 2005. All Rights Reserved. SeaZone Solutions Limited, 2005 012009.001
 Moray Offshore Renewables Ltd © 2012. This document is the property of contractors and sub-contractors and shall not be reproduced nor transmitted without prior written approval.



Moray Offshore Renewables Ltd

KEY

- Peterhead Grid Connection
- Potential AC/DC Converter Station Location - 2km buffer to zone
- MacColl Windfarm
- Stevenson Windfarm
- Telford Windfarm
- MORL Zone Boundary
- Onshore Export Cable Route
- Offshore Export Cable Route

Horizontal Scale: 1:350,000 A3 Chart
 0 7,500 15,000 Meters

Geodetic Parameters: WGS84 UTM Zone 30N

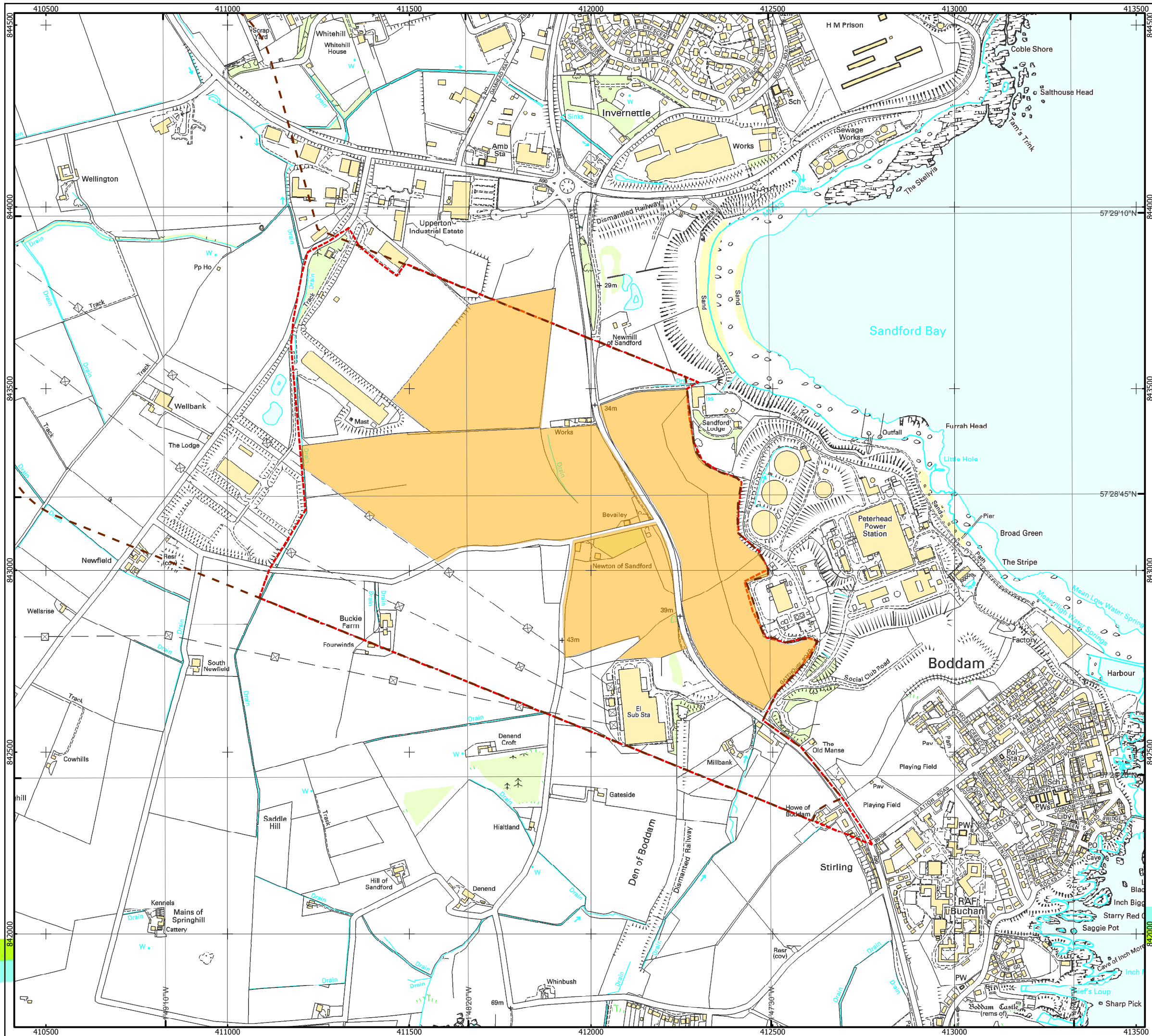
Produced: PH
 Reviewed: CR
 Approved: TL

Date: 02/03/2012 Revision: B
 REF: 8460001-PPW0201-MOR-MAP-004

Fig 1.1-4 Export Cable Route to Peterhead via Fraserburgh

Moray Offshore Renewables Ltd

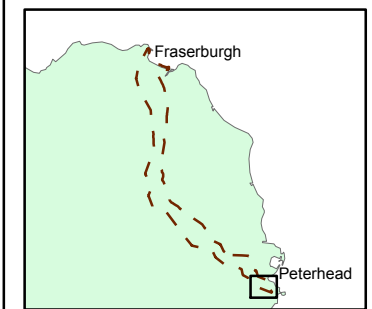
© Crown Copyright 2012. All Rights Reserved. Ordnance Survey 1038418 (40072829)
 Moray Offshore Renewables Ltd © 2012. This document is the property of contractors and sub-contractors and shall not be reproduced nor transmitted without prior written approval.



Moray Offshore Renewables Ltd

KEY

- OFTO Onshore Survey Area
- Onshore Noise Survey Area
- Potential Land Parcels



Horizontal Scale: 1:10,000 A3 Chart
 0 240 480 Meters

Geodetic Parameters: OSGB 1936 / British National Grid

Produced: PH
 Reviewed: JAC
 Approved: PM

Date: 27/02/2012 Revision: C
 REF: 8460001-PPW0201-MOR-MAP-005

Fig 1.1-5 Potential Onshore Converter and Substation Locations

Moray Offshore Renewables Ltd