

Moray Offshore Renewables Ltd

- KEY**
 Turbine Layout Scenario 4c:
- Telford 7MW Turbines (204m)
 - Stevenson 7MW Turbines (204m)
 - MacColl 7MW Turbines (204m)
 - Eastern Development Area
 - 10km Distance Radii
 - ⋯ 50km Study Area Boundary
 - Landscape Character *
 - ▽ Viewpoint Location **
- Coastal Character Areas**
- 9 Sinclair's Bay
 - 10 Noss Head
 - 11 Wick Bay
 - 12 Sarclet Head
 - 13 Lybster Bay

Note:
 * Landscape types listed in Figure 5.4.2
 ** Viewpoint locations listed in Figure 5.4.7

Horizontal Scale: 1:100,000 A3 Chart
 0 2,500 5,000 Meters

Geodetic Parameters: WGS84 UTM Zone 30N

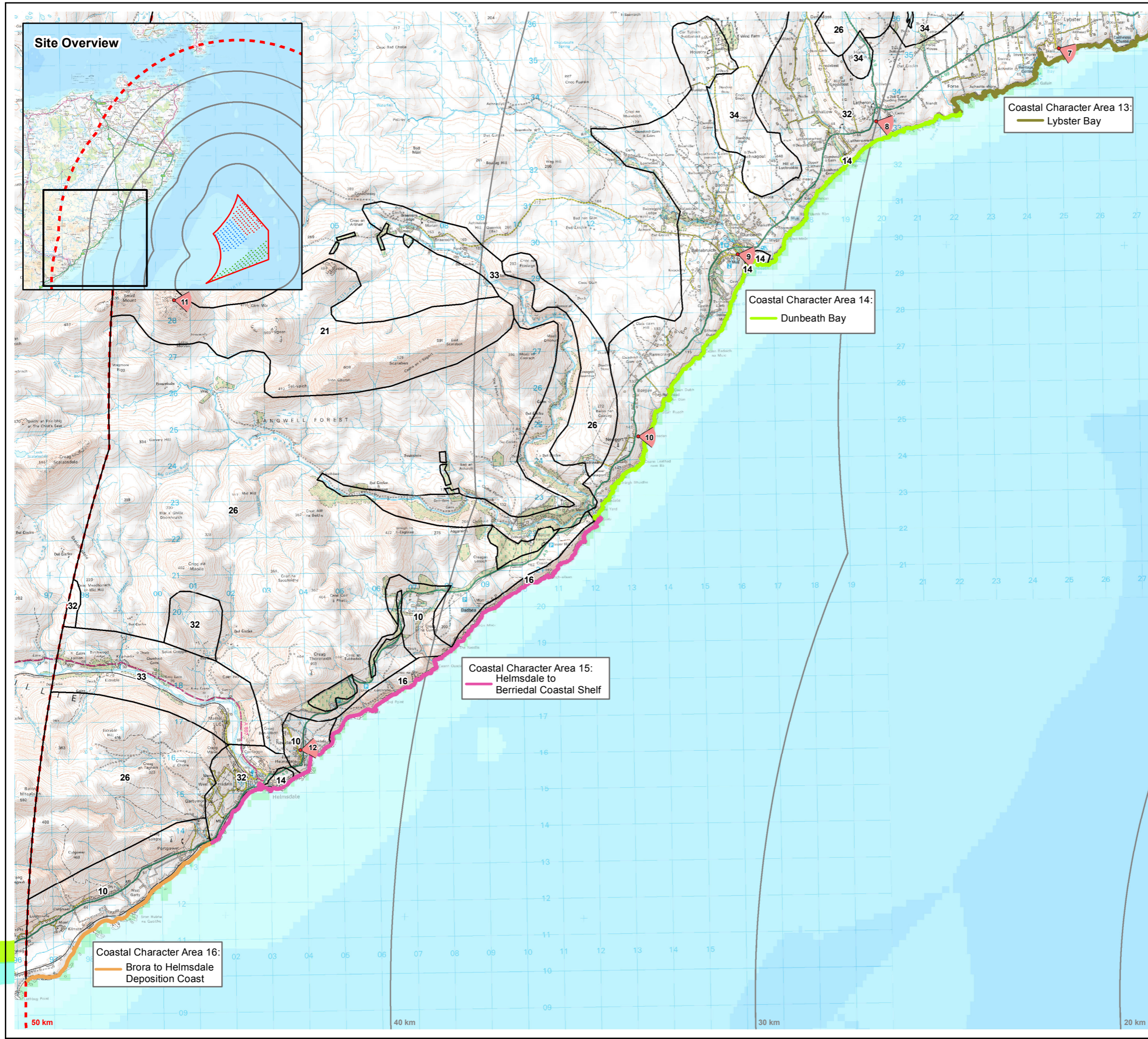
Produced: TR
 Reviewed: SM
 Approved: SM

Date: 09/07/2012 Revision: B
 REF: 8460001-PPW0201-OPE-MAP-006

Figure 5.4-4b
Coastal Character Areas
(Caithness East)

Moray Offshore
 Renewables Ltd

© SeaZone Solutions Limited, 2005, [012009.001, 02201.009]. Reproduced from Ordnance Survey digital map data © Crown copyright 2012. All rights reserved. License number 100050437 (40072151). Moray Offshore Renewables Ltd © 2012. This document is the property of contractors and sub-contractors and shall not be reproduced without prior written approval.



Moray Offshore Renewables Ltd

KEY

Turbine Layout Scenario 4c:

- Telford 7MW Turbines (204m)
- Stevenson 7MW Turbines (204m)
- MacColl 7MW Turbines (204m)
- Eastern Development Area
- 10km Distance Radii
- 50km Study Area Boundary
- Landscape Character *
- △ Viewpoint Location **

Coastal Character Areas

- 13 Lybster Bay
- 14 Dunbeath Bay
- 15 Helmsdale to Berriedale Coastal Shelf
- 16 Brora to Helmsdale Deposition Coast

Note:

- * Landscape types listed in Figure 5.4.2
- ** Viewpoint locations listed in Figure 5.4.7

Horizontal Scale: 1:100,000 A3 Chart
 0 2,500 5,000 Meters

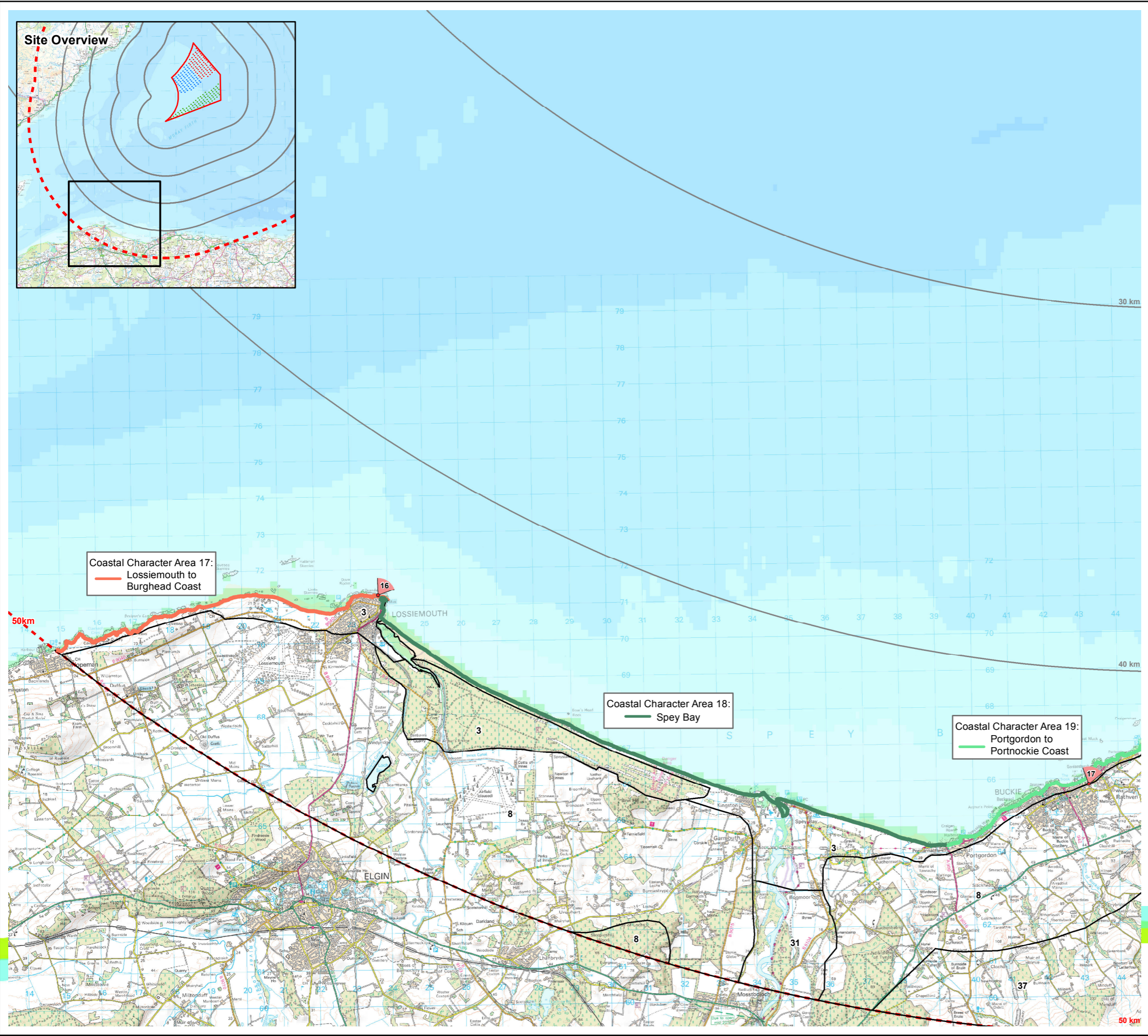
Geodetic Parameters: WGS84 UTM Zone 30N

Produced: TR
 Reviewed: SM
 Approved: SM

Date: 09/07/2012 Revision: B
 REF: 8460001-PPW0201-OPE-MAP-007

Figure 5.4-4c
Coastal Character Areas
(Caithness South)

Moray Offshore
Renewables Ltd



Moray Offshore Renewables Ltd

KEY

- Turbine Layout Scenario 4c:
- Telford 7MW Turbines (204m)
 - Stevenson 7MW Turbines (204m)
 - MacColl 7MW Turbines (204m)
 - Eastern Development Area
 - 10km Distance Radii
 - 50km Study Area Boundary
 - Landscape Character *
 - ▽ Viewpoint Location **
- Coastal Character Areas
- 17 Lossiemouth to Burghead Coast
 - 18 Spey Bay
 - 19 Portgordon to Portnockie Coast

Note:
 * Landscape types listed in Figure 5.4.2
 ** Viewpoint locations listed in Figure 5.4.7

Horizontal Scale: 1:100,000 A3 Chart
 0 2,500 5,000 Meters

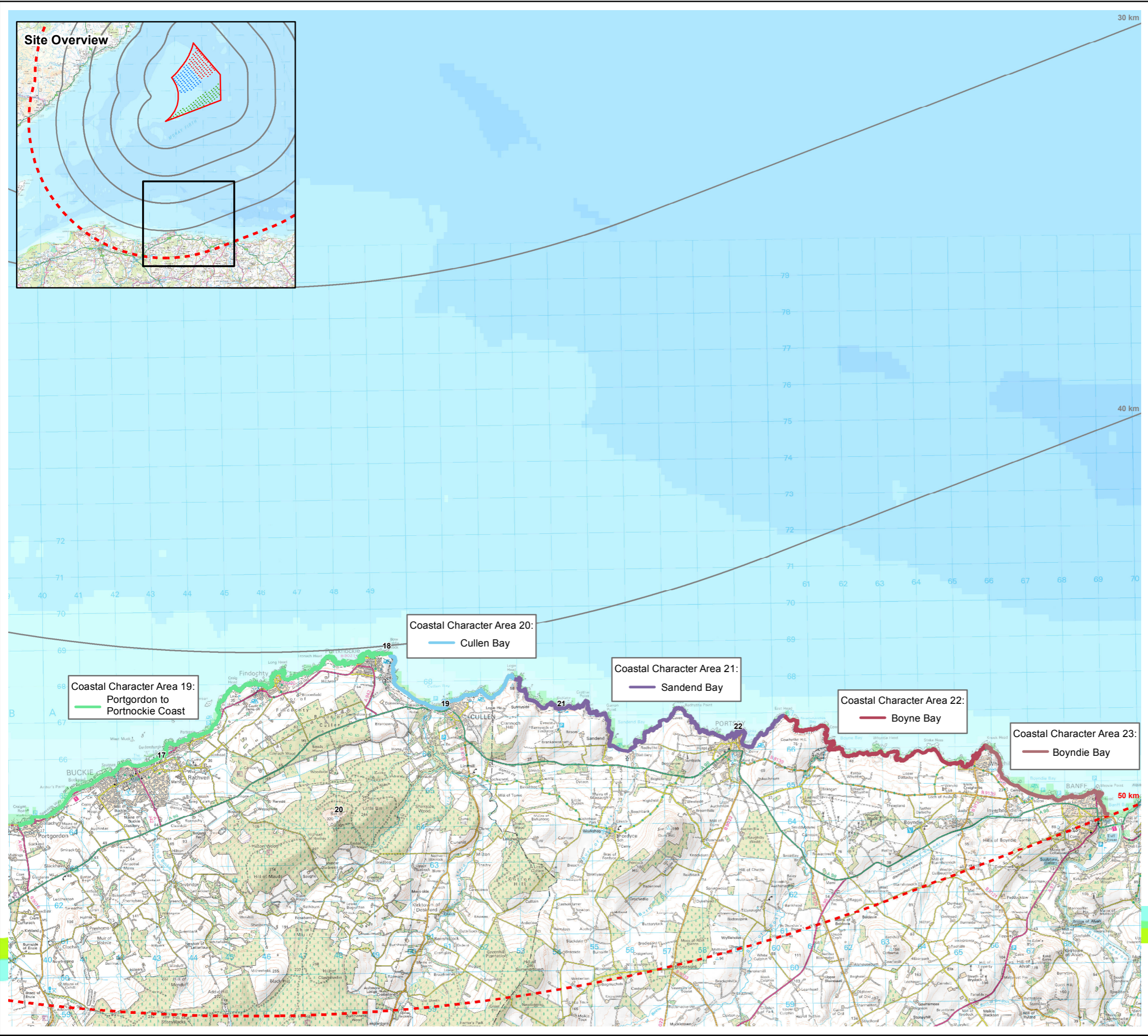
Geodetic Parameters: WGS84 UTM Zone 30N

Produced: TR
 Reviewed: SM
 Approved: SM

Date: 09/07/2012 Revision: B
 REF: 8460001-PPW0201-OPE-MAP-008

**Figure 5.4-4d
 Coastal Character Areas
 (Morayshire)**

Moray Offshore
 Renewables Ltd



Moray Offshore Renewables Ltd

KEY

- Turbine Layout Scenario 4c:
- Telford 7MW Turbines (204m)
 - Stevenson 7MW Turbines (204m)
 - MacColl 7MW Turbines (204m)
 - Eastern Development Area
 - 10km Distance Radii
 - 50km Study Area Boundary
 - Landscape Character *
 - ▽ Viewpoint Location **

Coastal Character Areas

- 19 Portgordon to Portnockie Coast
- 20 Cullen Bay
- 21 Sandend Bay
- 22 Boyne Bay
- 23 Boyndie Bay

Note:
 * Landscape types listed in Figure 5.4.2
 ** Viewpoint locations listed in Figure 5.4.7

Horizontal Scale: 1:100,000 A3 Chart
 0 2,500 5,000 Meters

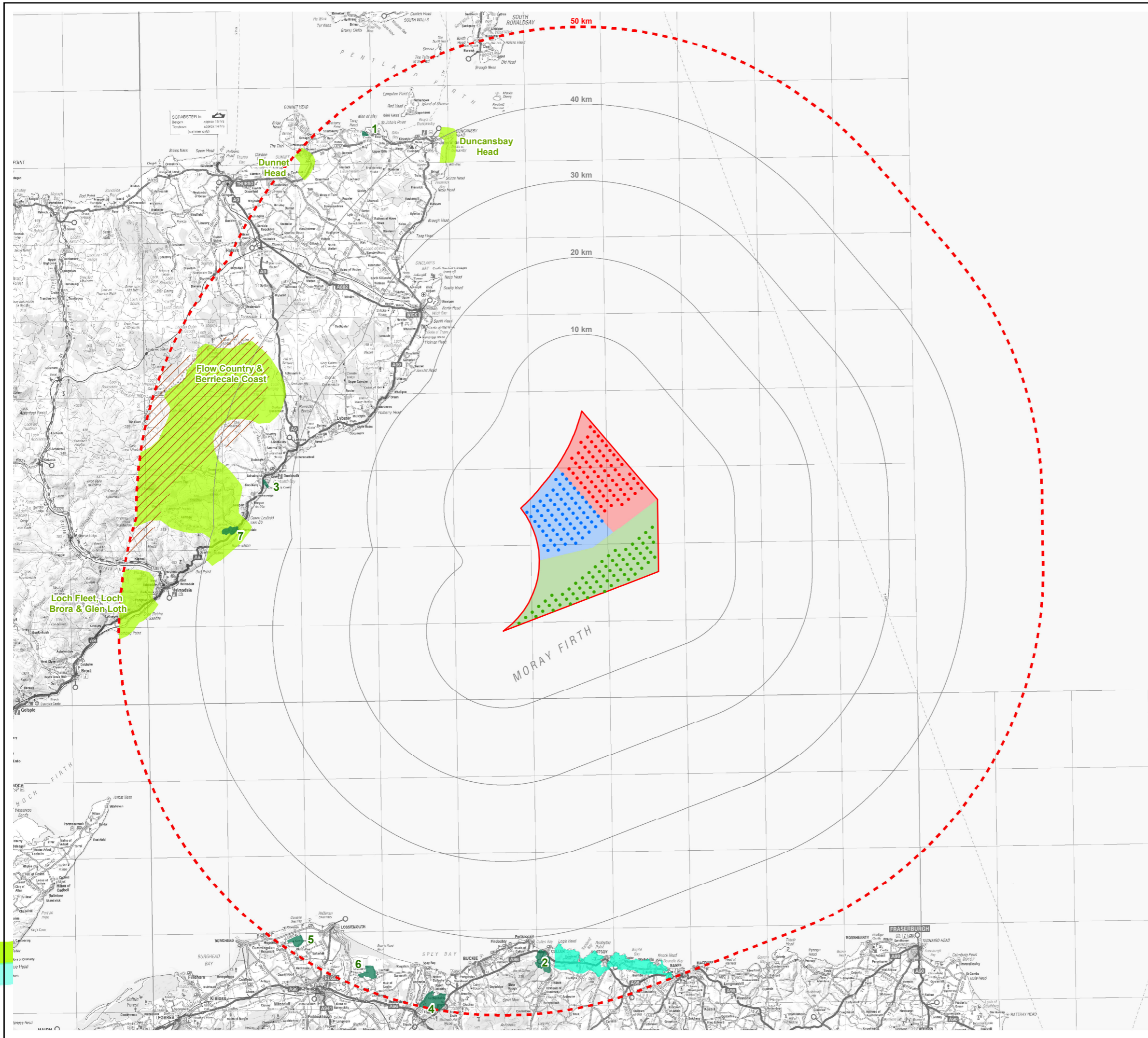
Geodetic Parameters: WGS84 UTM Zone 30N

Produced: TR
 Reviewed: SM
 Approved: SM

Date: 09/07/2012 Revision: B
 REF: 8460001-PPW0201-OPE-MAP-009

Figure 5.4-4e
Coastal Character Areas
(Aberdeenshire)
 Moray Offshore
 Renewables Ltd

This map contains Ordnance Survey data © Crown copyright and database right, 2012. This document is the property of contractors and sub-contractors and shall not be reproduced nor transmitted without prior written approval.



Moray Offshore Renewables Ltd

KEY

- Turbine Layout Scenario 4c:
- Telford 7MW Turbines (204m)
 - Stevenson 7MW Turbines (204m)
 - MacColl 7MW Turbines (204m)
 - Telford Development Area
 - Stevenson Development Area
 - MacColl Development Area
 - Eastern Development Zone
 - 10km Distance Radii
 - ⋯ 50km Study Area Boundary
- Landscape Designations
- ⋯ Search Area for Wild Land
 - Area of Landscape Significance
 - Special Landscape Area
 - Garden & Designed Landscape
- 1 Castle of Mey
 - 2 Cullen House
 - 3 Dunbeath Castle
 - 4 Gordon Castle
 - 5 Gordonstoun
 - 6 Innes House
 - 7 Langwell Lodge

Horizontal Scale: 1:475,000 A3 Chart
 0 10,000 20,000 Meters

Geodetic Parameters: WGS84 UTM Zone 30N

Produced: LA
 Reviewed: SM
 Approved: SM

Date: 09/07/2012 Revision: B
 REF: 8460001-PPW0201-OPE-MAP-010

**Figure 5.4-5
 Landscape Designations**

Moray Offshore
 Renewables Ltd