



Photomontage view from Catchory Distance to nearest turbine: 38.90 km (Telford) Camera: Canon EOS 5D Mark II Focal length: 50 mm Horizontal Field of View : 39.6 degrees Camera Height: 1.5 m Date: 02/09/12 Time: 14:43

This image should be viewed with both eyes from a distance of approximately 500mm*

*Calculation of viewing distance from The Highland Council "Visualisation Standards for Wind Energy Developments (January 2010)".

Figure 8.4-25 (page 4 of 5)
Viewpoint 13: Catchory

Photomontage
(The Highland Council Visualisation Standards, 50 mm)
Layout Scenario 4c



Photomontage view from Catchory Distance to nearest turbine: 38.90 km (Telford) Camera: Canon EOS 5D Mark II Focal length: 75 mm Horizontal Field of View : 27 degrees Camera Height: 1.5 m Date: 02/09/12 Time: 14:43

This image should be viewed with both eyes from a distance of approximately 500mm*

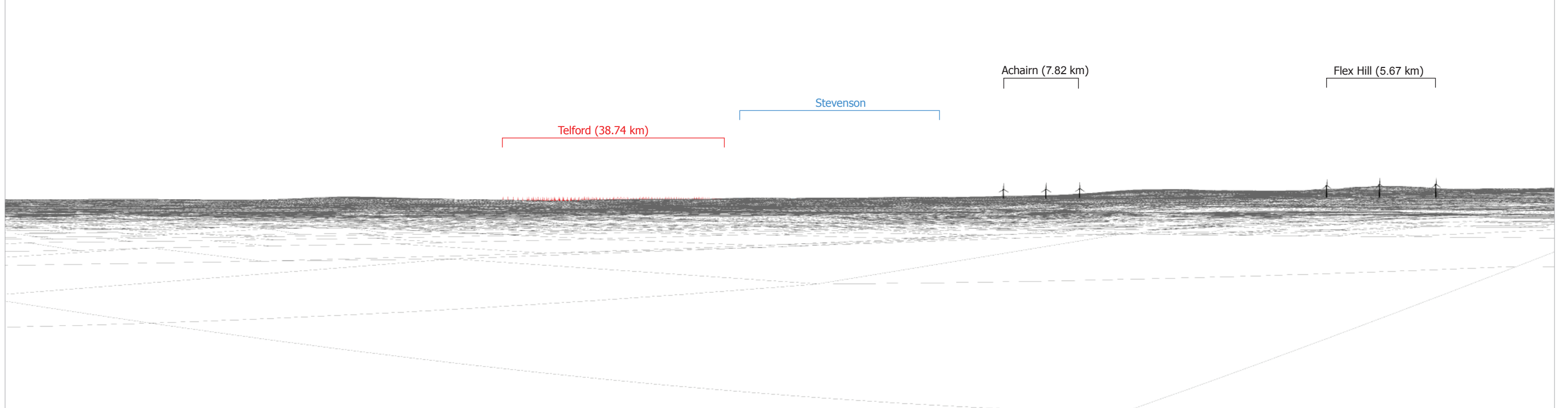
*Calculation of viewing distance from The Highland Council "Visualisation Standards for Wind Energy Developments (January 2010)".

Figure 8.4-25 (page 5 of 5)
Viewpoint 13: Catchory

Photomontage
(The Highland Council Visualisation Standards, 75 mm)
Layout Scenario 4c



Existing view from Catchory Distance to nearest turbine: 38.74 km (Telford) Camera: Canon EOS 5D Mark II Focal Length: 50mm Horizontal Field of View: 72mm Camera Height: 1.5m Date: 02/09/12 Time: 14:45



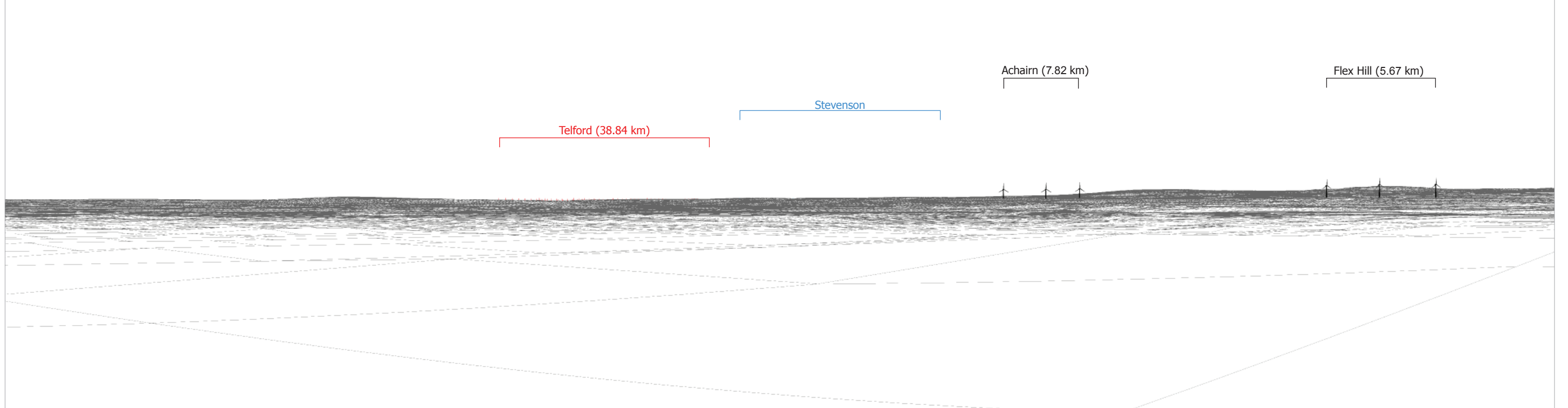
Computer generated wireframe showing the proposed developments Telford (Red), Stevenson (Blue) and MacColl (Green) and other operational wind farm turbines in black

Reproduced from Ordnance Survey Landform Profile digital terrain height data © Crown Copyright 2012. All rights reserved. Licence Number 0100034870

<p>Important Viewing Instructions</p> <p>The photograph is a composite image made up of 5 No 50mm photographs joined together horizontally to form an overall field of view which is wider than that seen in detail by the human eye. For correct perspective viewing, these images must be viewed at an exact distance of 314 mm with one eye whilst curving the image in and exact arc of 72 degrees. This image should only be assessed in the real landscape from the same viewpoint.</p>	<p>Figure 8.4-25a Viewpoint 13: Catchory</p>	
	<p>Photograph and Wireframe</p>	
	<p>Layout Scenario 1c</p>	
<p>Date: 09/07/2012 Revision: B</p>		
<p>Ref: 8460001-PPW0201-OPE-MAP-071</p>		



Existing view from Catchory Distance to nearest turbine: 38.84 km (Telford) Camera: Canon EOS 5D Mark II Focal Length: 50mm Horizontal Field of View: 72mm Camera Height: 1.5m Date: 02/09/12 Time: 14:45



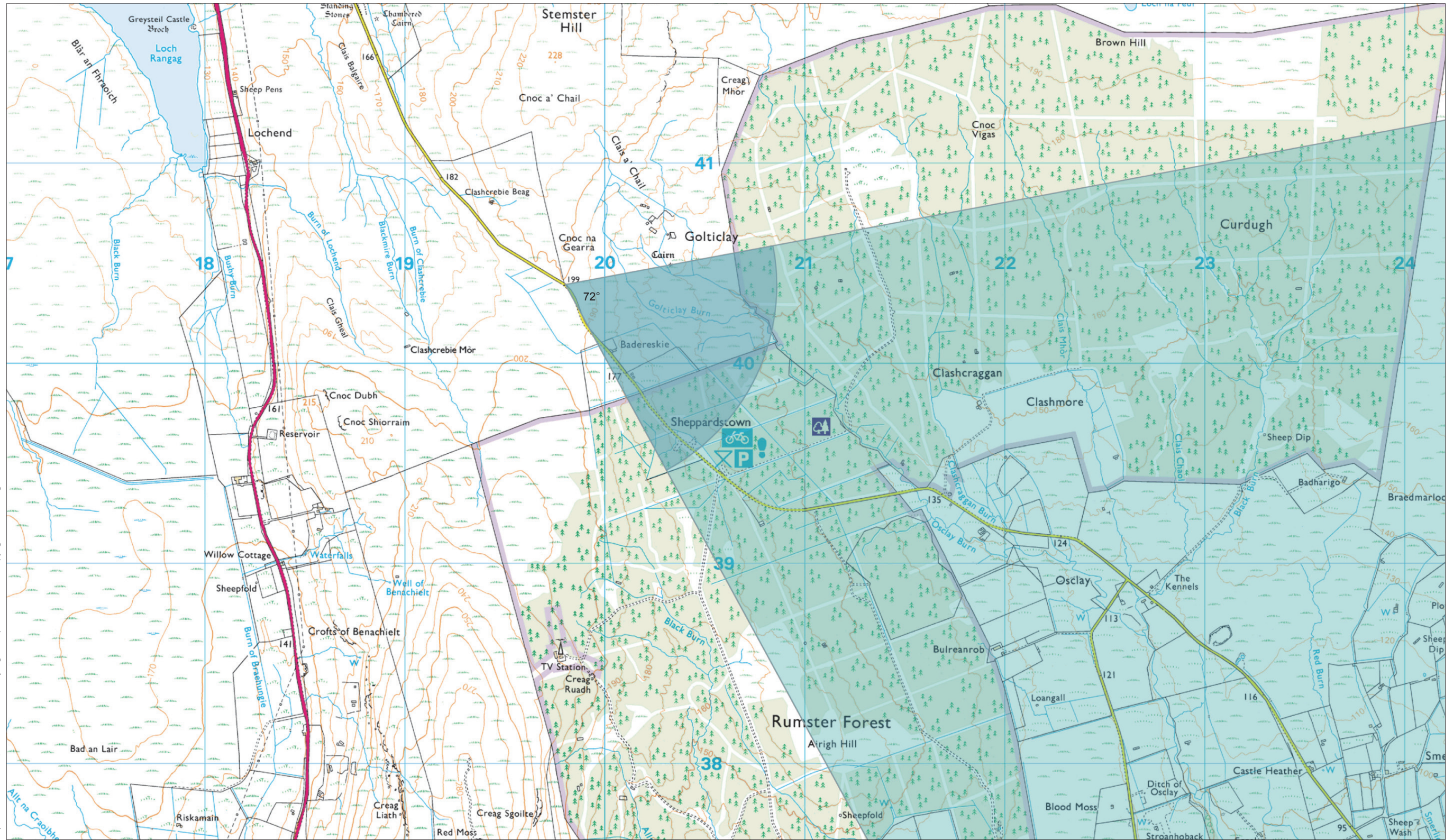
Computer generated wireframe showing the proposed developments Telford (Red), Stevenson (Blue) and MacColl (Green) and other operational wind farm turbines in black

Reproduced from Ordnance Survey Landform Profile digital terrain height data © Crown Copyright 2012. All rights reserved. Licence Number 0100034870

<p>Important Viewing Instructions</p> <p>The photograph is a composite image made up of 5 No 50mm photographs joined together horizontally to form an overall field of view which is wider than that seen in detail by the human eye. For correct perspective viewing, these images must be viewed at an exact distance of 314 mm with one eye whilst curving the image in and exact arc of 72 degrees. This image should only be assessed in the real landscape from the same viewpoint.</p>	<p>Figure 8.4-25b Viewpoint 13: Catchory</p>	
	<p>Photograph and Wireframe</p>	
	<p>Layout Scenario 5c</p>	
<p>Date: 09/07/2012 Revision: B</p>		
<p>Ref: 8460001-PPW0201-OPE-MAP-072</p>		

© COPYRIGHT STATEMENT: Moray Offshore Renewables Ltd © 2012. This document is the property of contractors and sub-contractors and shall not be reproduced nor transmitted without prior written approval.

Reproduced from 1:25,000 Ordnance Survey digital map data © Crown Copyright 2012. All rights reserved. Licence Number 0100031673



Viewpoint 14: Minor Road, south side of Stemster Hill

OSGB Grid Reference: 319802 E 940395 N

Distance to nearest turbine: 33.74 km

AOD: c 199 m

View taken from minor road connecting A9 and A99 near Stemster Hill



Moray Offshore Renewables Ltd

Scale in metres: 1: 20,000



Geodetic Parameters: WGS84 UTM Zone 30N

Produced: LT

Reviewed: SM

Approved: SM

Date: 09/07/2012

Revision: B

Ref: 8460001-PPW0201-OPE-MAP-073



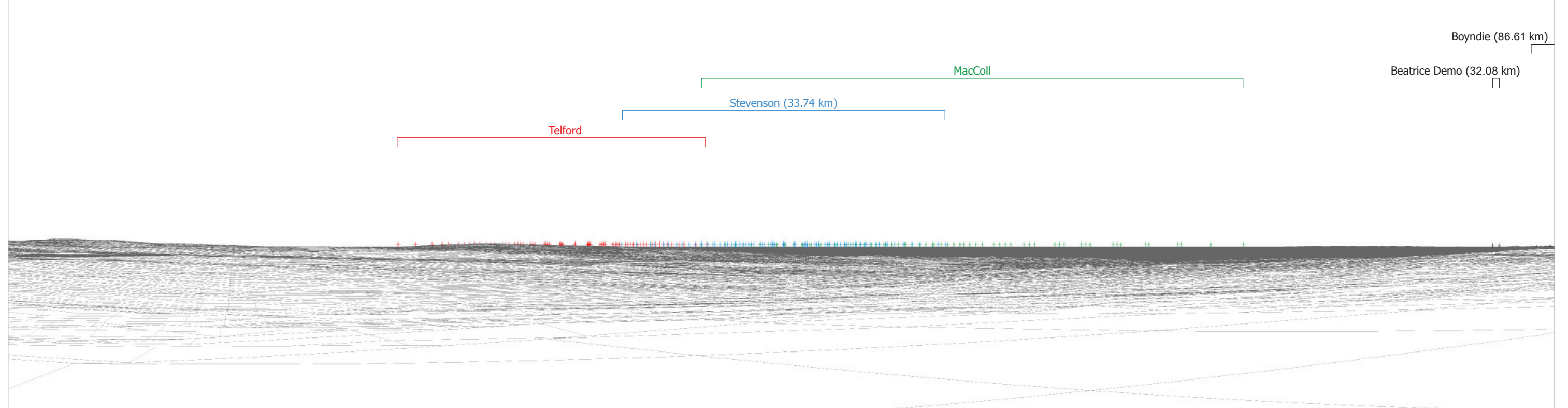
Figure 8.4-26 (page 1 of 2)

Viewpoint 14: Minor Road, south side of Stemster Hill Location

Moray Offshore Renewables Ltd



Existing view from Minor Road, south side of Stemster Hill Distance to nearest turbine: 33.74 km (Stevenson) Camera: Canon EOS 5D Mark II Focal Length: 50mm Horizontal Field of View: 72 degrees Camera Height: 1.5m Date: 03/09/11 Time: 15:35



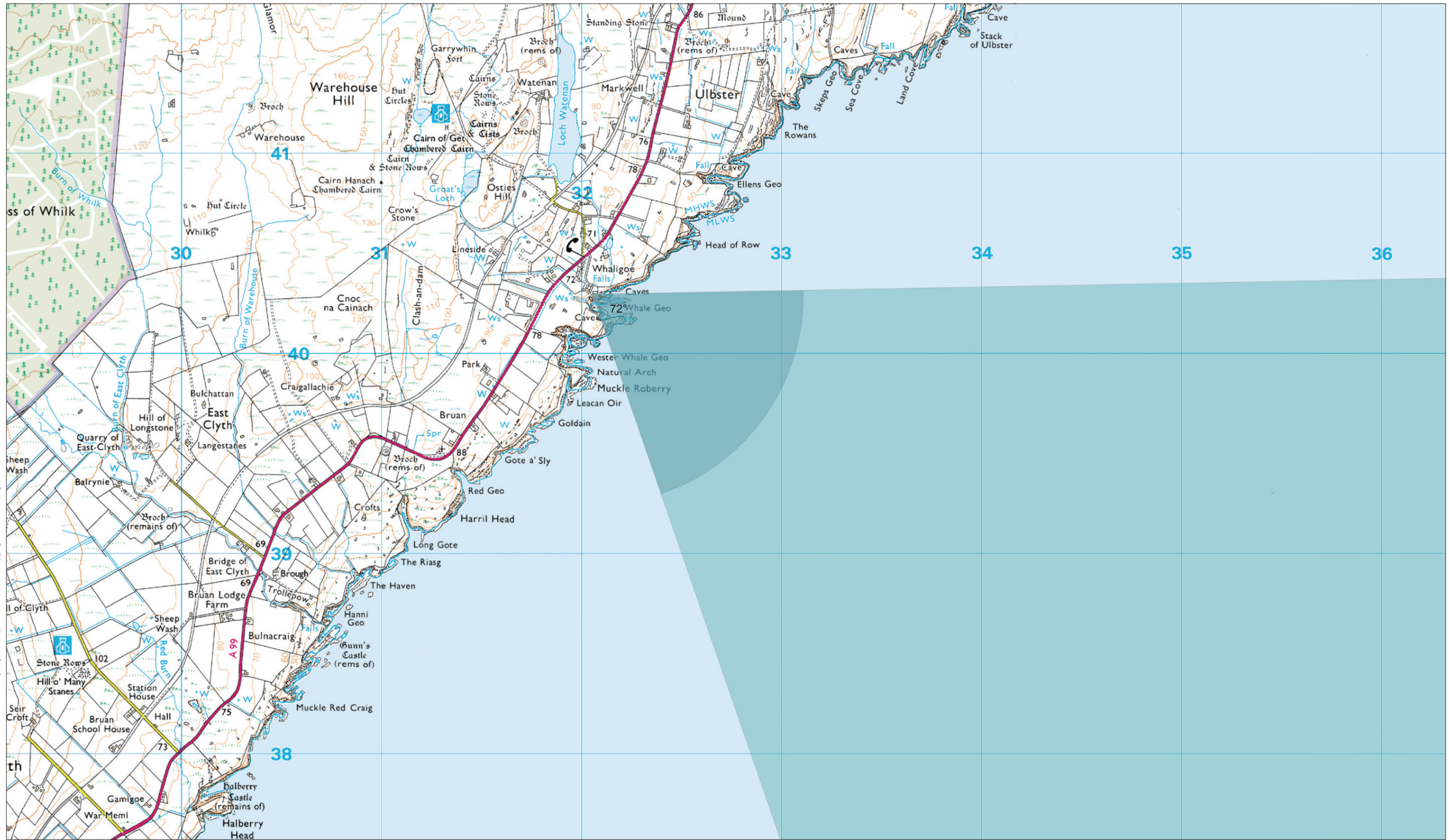
Computer generated wireframe showing the proposed developments Telford (Red), Stevenson (Blue) and MacColl (Green) and other operational wind farm turbines in black

Reproduced from Ordnance Survey Landform Profile digital terrain height data © Crown Copyright 2012. All rights reserved. Licence Number 0100034870

Important Viewing Instructions

The photograph is a composite image made up of 5 No 50mm photographs joined together horizontally to form an overall field of view which is wider than that seen in detail by the human eye. For correct perspective viewing, these images must be viewed at an exact distance of 314 mm with one eye whilst curving the image in and exact arc of 72 degrees. This image should only be assessed in the real landscape from the same viewpoint.

Figure 8.4-26 (page 2 of 2)
 Viewpoint 14: Minor Road, south side of Stemster Hill
 Photograph and Wireframe
 Layout Scenario 4c



Viewpoint 15: Whaligoe Steps

OSGB Grid Reference: 332051 E 940296 N

Distance to nearest turbine: 23.64 km

AOD: c 66 m

View taken from visitor attraction of Whaligoe Steps - 365 man-made steps cut into cliff to access small port



Moray Offshore Renewables Ltd

Scale in metres: 1: 20,000



Geodetic Parameters: WGS84 UTM Zone 30N

Produced: LT

Reviewed: SM

Approved: SM

Date: 09/07/2012

Revision: B

Ref: 8460001-PPW0201-OPE-MAP-074



Figure 8.4-27 (page 1 of 3)
Viewpoint 15: Whaligoe Steps
 Location

Moray Offshore
Renewables Ltd



Existing view from Whaligoe Steps

Distance to nearest turbine: 23.64 km (Stevenson)

Camera: Canon EOS 5D Mark II

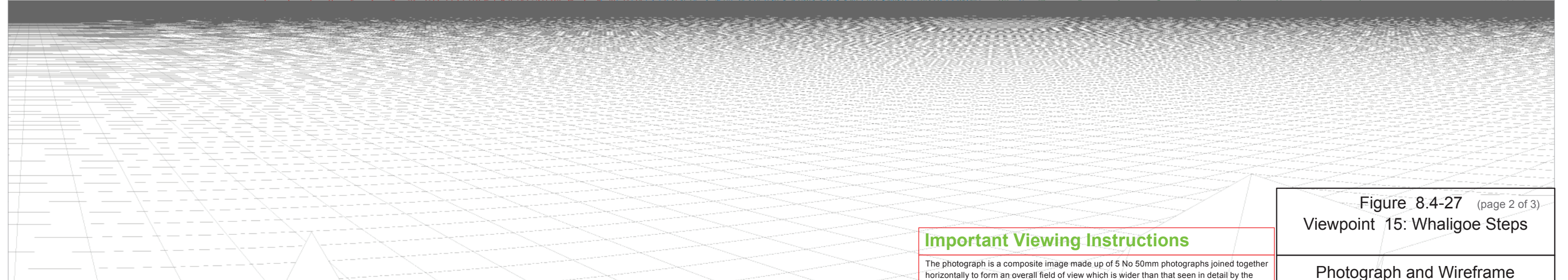
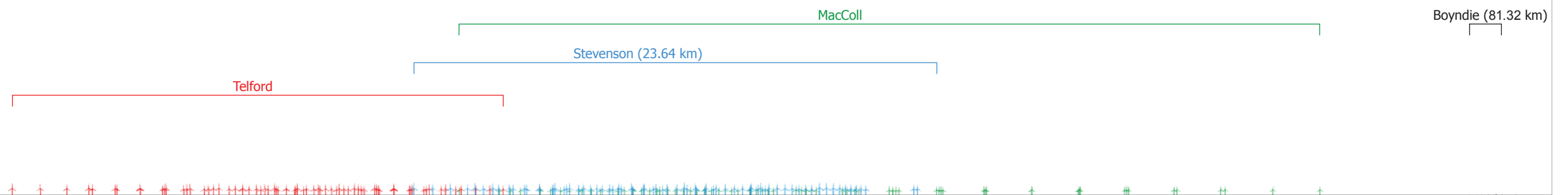
Focal Length: 50mm

Horizontal Field of View: 72 degrees

Camera Height: 1.5m

Date: 03/09/11

Time: 13:53



Computer generated wireframe showing the proposed developments Telford (Red), Stevenson (Blue) and MacColl (Green) and other operational wind farm turbines in black

Important Viewing Instructions

The photograph is a composite image made up of 5 No 50mm photographs joined together horizontally to form an overall field of view which is wider than that seen in detail by the human eye. For correct perspective viewing, these images must be viewed at an exact distance of 314 mm with one eye whilst curving the image in and exact arc of 72 degrees. This image should only be assessed in the real landscape from the same viewpoint.

Figure 8.4-27 (page 2 of 3)
Viewpoint 15: Whaligoe Steps

Photograph and Wireframe

Layout Scenario 4c



Photomontage view showing the proposed development Distance to nearest turbine: 23.64 km (Stevenson) Camera: Canon EOS 5D Mark II Focal Length: 50mm Horizontal Field of View: 72 degrees Camera Height: 1.5m Date: 03/09/11 Time: 13:53

Important Viewing Instructions

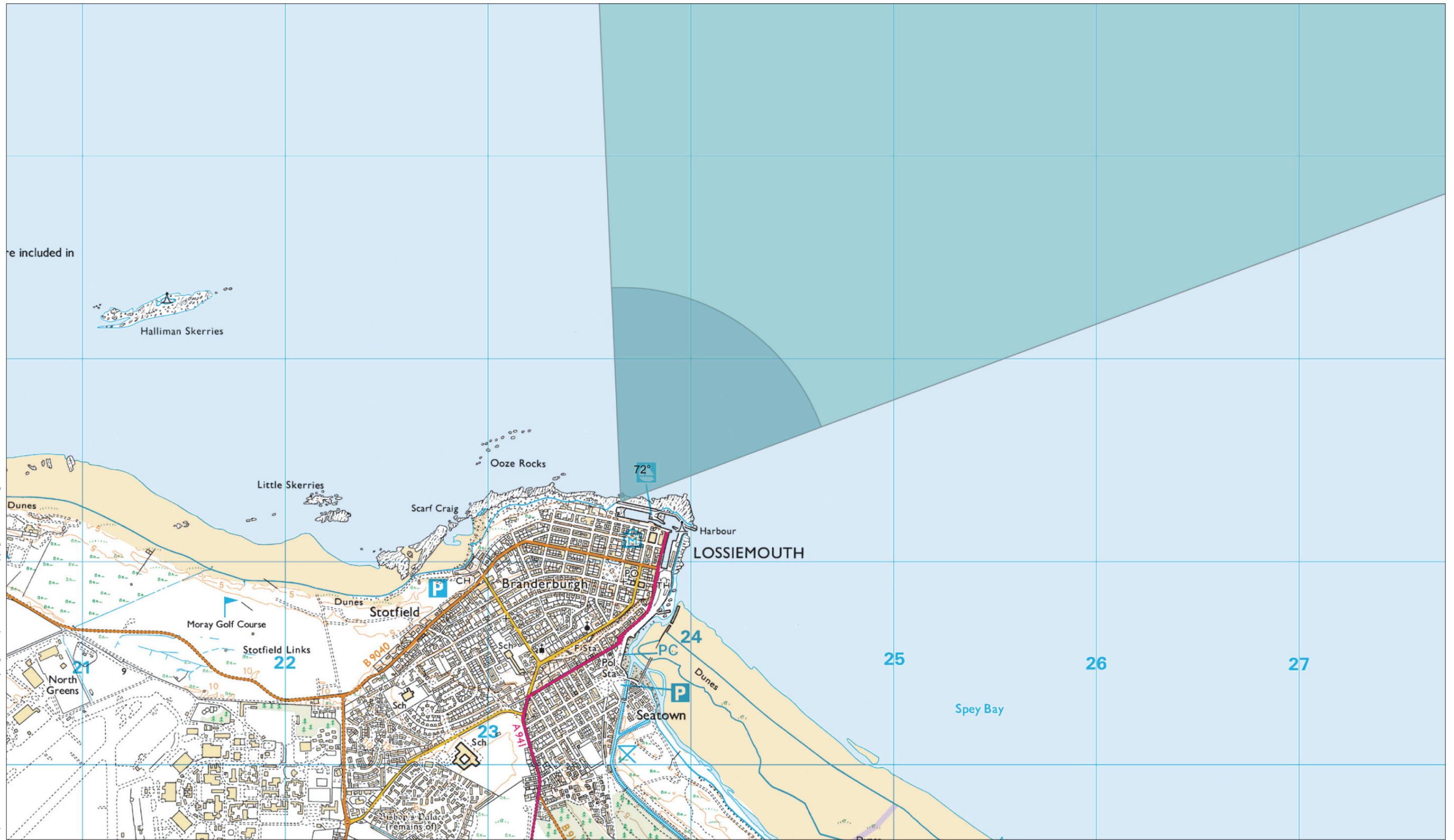
This is a composite image made up of 5 No 50mm photographs joined together horizontally to form an overall field of view which is wider than that seen in detail by the human eye. For correct perspective viewing, this photograph, photomontage and wireline must be viewed at an exact distance of 314 mm with one eye whilst curving the image in and exact arc of 72 degrees.

This image should only be assessed in the real landscape from the same viewpoint.

Figure 8.4-27 (page 3 of 3) Viewpoint 15: Whaligoe Steps
Photomontage
Layout Scenario 4c

© COPYRIGHT STATEMENT: Moray Offshore Renewables Ltd © 2012. This document is the property of contractors and sub-contractors and shall not be reproduced nor transmitted without prior written approval.

Reproduced from 1:25,000 Ordnance Survey digital map data © Crown Copyright 2012. All rights reserved. Licence Number 0100031673



Viewpoint 16: Lossiemouth, Harbour

OSGB Grid Reference: 323654 E 871296 N

Distance to nearest turbine: 45.81 km

AOD: c 6 m

View taken from harbour wall



Moray Offshore Renewables Ltd

Scale in metres: 1: 20,000



Geodetic Parameters: WGS84 UTM Zone 30N

Produced: LT

Reviewed: SM

Approved: SM

Date: 09/07/2012

Revision: B

Ref: 8460001-PPW0201-OPE-MAP-075



Figure 8.4-28 (page 1 of 2)
 Viewpoint 16: Lossiemouth,
 Harbour Location

Moray Offshore
Renewables Ltd