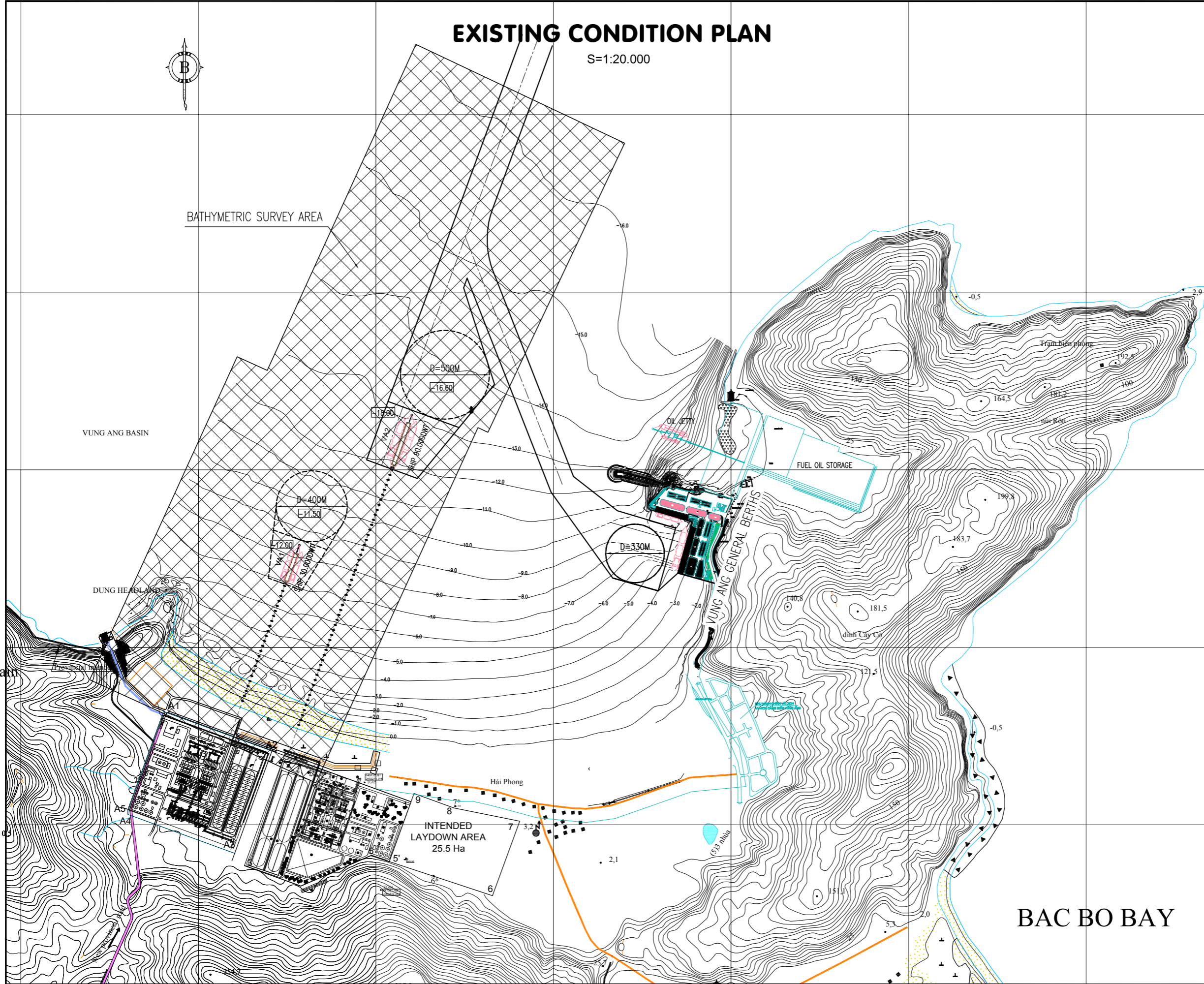


EXISTING CONDITION PLAN

S=1:20.000



NOTES

1. ALL LEVELS ARE IN METERS ON CHART DATUM
2. ALL DIMENSIONS ARE IN METRES

OWNER: VAPCO CONSULTANT: POYRY

REFERENCES

DRAWING	REF

PORT AND WATERWAY ENGINEERING CONSULTANT JSC

VUNG ANG II THERMAL POWER PLANT PROJECT
ITEM: MARINE FACILITIES
 BASIC DESIGN

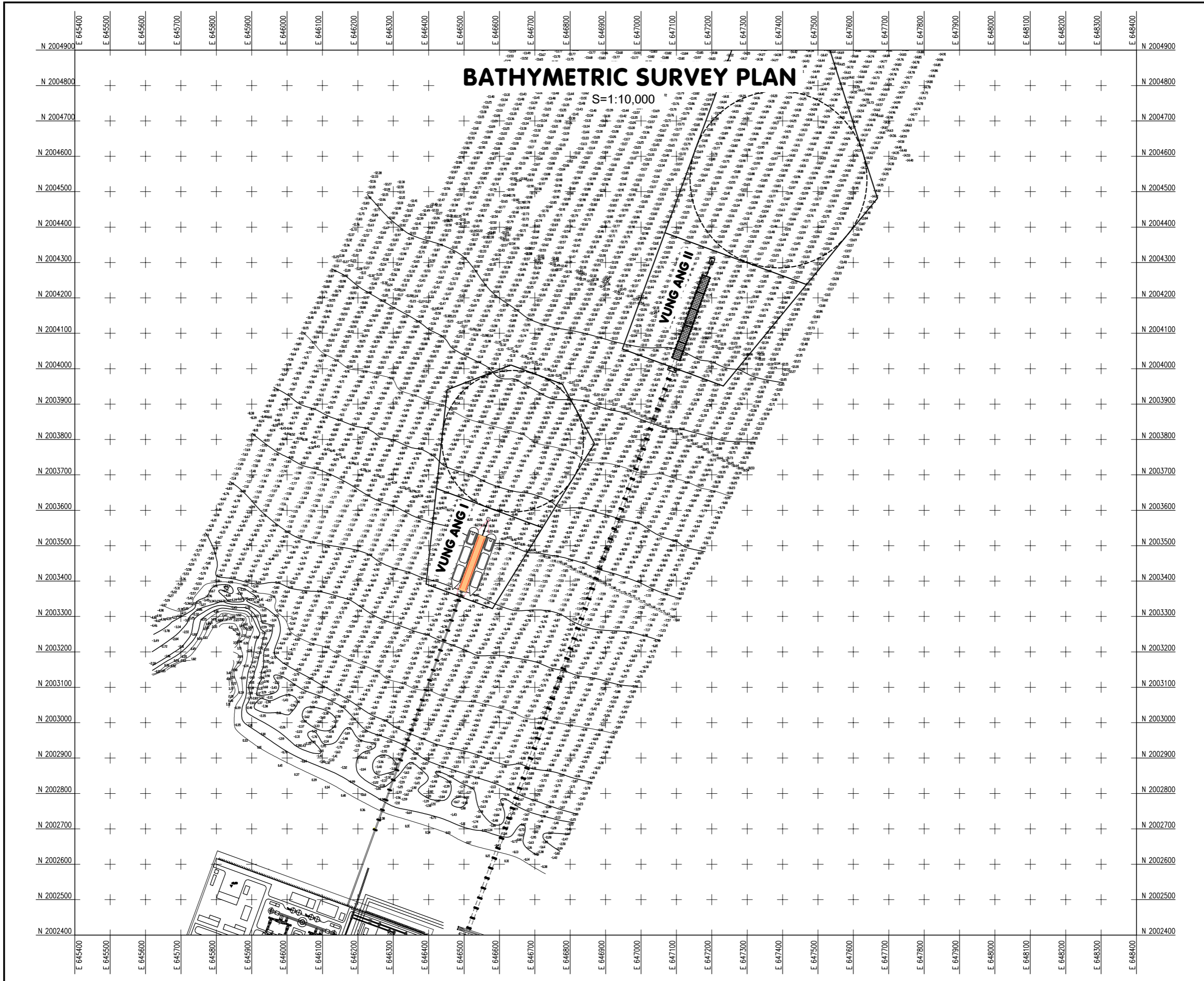
EXISTING CONDITION PLAN

DRAWN	TRAN MINH THU
CHECKED	LE MY HANH
DESIGNER	HOANG MINH QUANG
TEAM LEADER	HOANG MINH QUANG
CHIEF OF DEP	NGUYEN MINH KHANG
QUALITY	DANG QUANG LIEN

Hanoi, December , 2009
 PROJECT EXECUTIVE DIRECTOR


NGUYEN MINH QUY	
SCALE	
V:	H:
DOC.SIGN:	09-CDT-019
DRAWING NO.:	GLN-001
PUBLISH:	01

BAC BO BAY

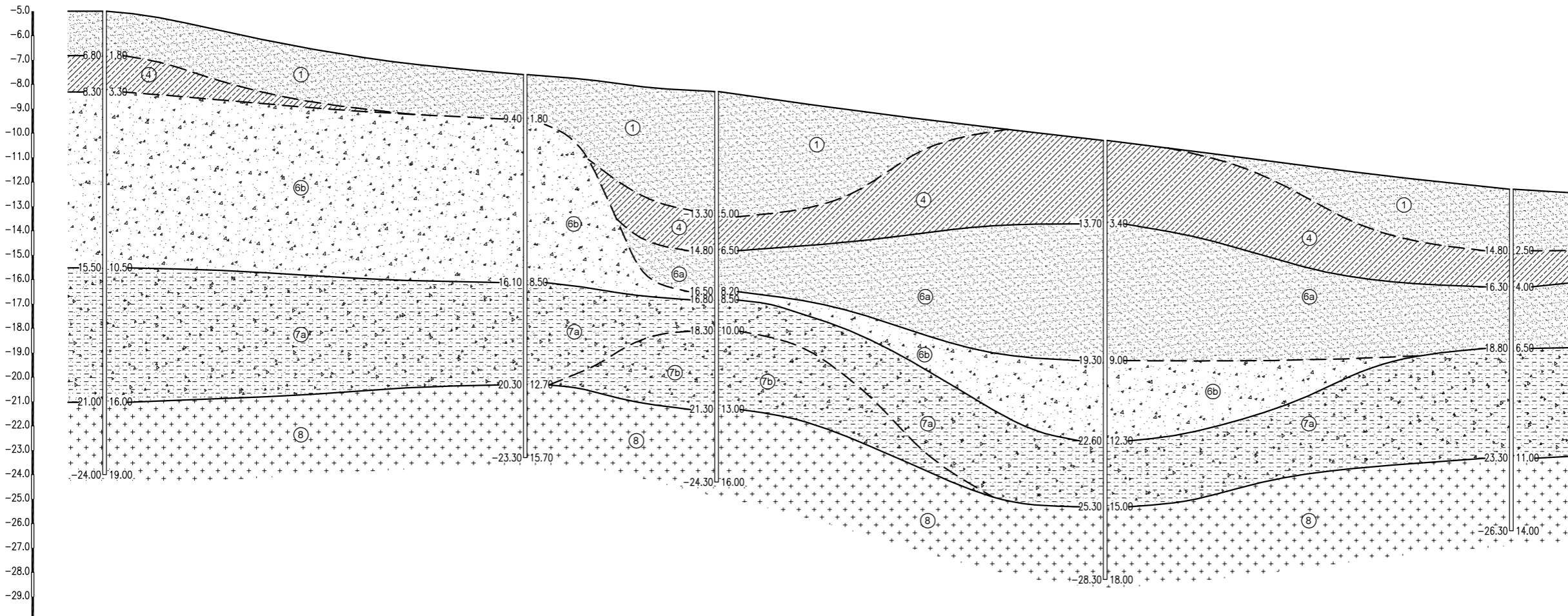


BATHYMETRIC SURVEY PLAN

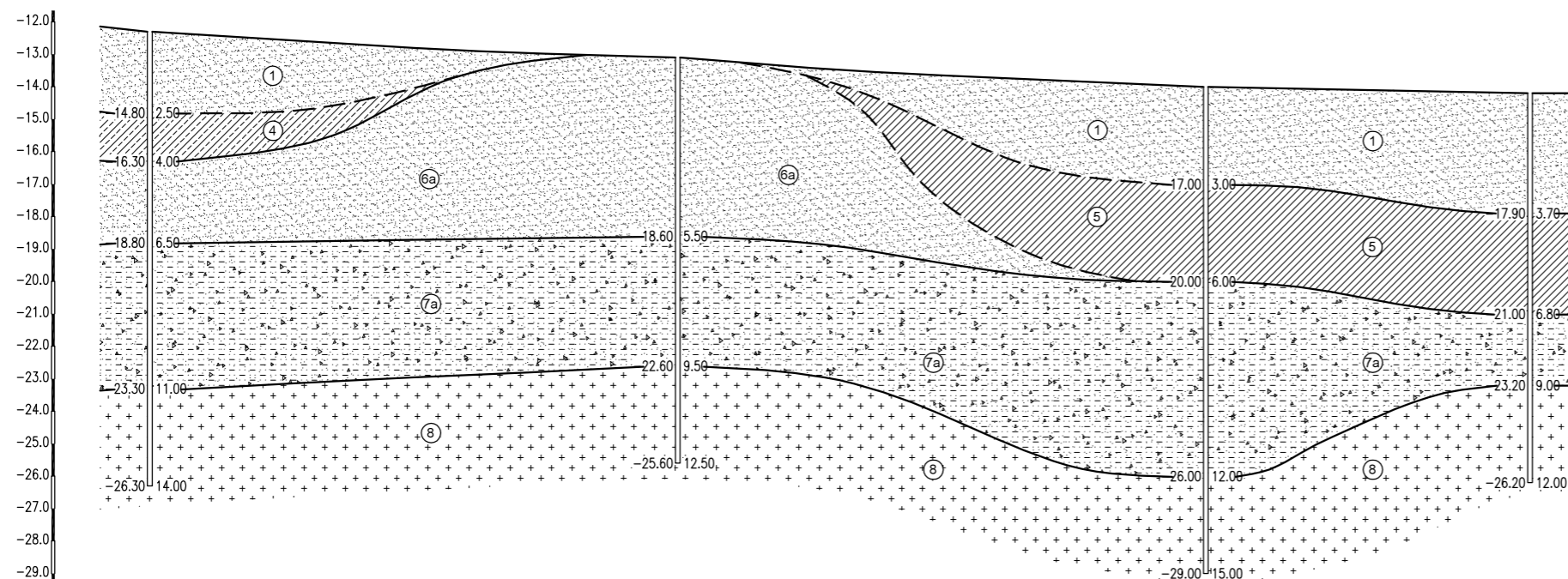
S=1:10,000

NOTES		
1. ALL LEVELS ARE IN METERS ON CHART DATUM		
2. COORDINATES VN2000, LO=105°		
OWNER: VAPCO		CONSULTANT: POYRY
REFERENCES		
DRAWING	REF	
GLN-001		
		
VUNG ANG II THERMAL POWER PLANT PROJECT ITEM: MARINE FACILITIES BASIC DESIGN		
BATHYMETRIC SURVEY PLAN		
DRAWN	TRAN MINH THU	
CHECKED	LE MY HANH	
DESIGNER	HOANG MINH QUANG	
TEAM LEADER	HOANG MINH QUANG	
CHIEF OF DEP	NGUYEN MINH KHANG	
QUALITY	DANG QUANG LIEN	
Hanoi, December , 2009 PROJECT EXECUTIVE DIRECTOR NGUYEN MINH QUY		
SCALE		
V:	H:	
DOC SIGN:	09-CDT-019	
DRAWING NO:	GLN-002	
PUBLISH:	01	

GEOTECHNICAL SECTION



ELEVATION (M)	-5.00	-7.00	-8.30	-10.00	-12.00
BOREHOLE NO.	BH1	BH2	BH3	BH4	BH5
DISTANCE (M)		344.9	156.92	318.62	333.04



ELEVATION (M)	-12.00	-10.00	-10.00	-10.00	-12.00
BOREHOLE NO.	BH5	BH6	BH7	BH8	
DISTANCE (M)		325.36	325.45	199.79	

LEGEND

- ① BLUISH GREY, POORLY GRADED SAND, VERY LOOSE
- ④ BLUISH GREY, LEAN CLAY WITH SAND, VERY SOFT - FIRM
- ⑤ YELLOWISH GREY, SANDY LEAN CLAY, VERY STIFF
- ⑥a WHITE GREY, SILTY SAND, LOOSE TO MEDIUM DENSE
- ⑥b WHITE GREY, POORLY GRADED SAND, MEDIUM DENSE TO DENSE
- ⑦a SILTY SAND/SANDY LEAN CLAY WITH GRAVEL, HARD (COMPLETELY WEATHERED RHYOLITE)
- ⑦b MODERATELY HIGHLY WEATHERED RHYOLITE: GRAVEL, SAND
- ⑧ BLUISH GREY RHYOLITE

-4.40	6.70	LEVEL OF LAYER'S BOTTOM (M)	DEPTH OF LAYER'S BOTTOM
-5.50	7.80	LEVEL OF BOREHOLE'S BOTTOM (M)	DEPTH OF BOREHOLE'S BOTTOM (M)

- DEFINED GEOLOGICAL BOUNDARY
- UNDEFINED GEOLOGICAL BOUNDARY

NOTES

1. ALL LEVELS ARE IN METERS ON CHART DATUM
2. ALL DIMENSIONS ARE IN METERS

OWNER: VAPCO CONSULTANT: POYRY

REFERENCES

DRAWING	REF
GLN-003	

PORT AND WATERWAY ENGINEERING CONSULTANT JSC

VUNG ANG II THERMAL POWER PLANT PROJECT
ITEM: MARINE FACILITIES
 BASIC DESIGN

GEOTECHNICAL SECTION

DRAWN	TRAN MINH THU
CHECKED	LE MY HANH
DESIGNER	HOANG MINH QUANG
TEAM LEADER	HOANG MINH QUANG
CHIEF OF DEP	NGUYEN MINH KHANG
QUALITY	DANG QUANG LIEN

Hanoi, December , 2009
 PROJECT EXECUTIVE DIRECTOR

NGUYEN MINH QUY

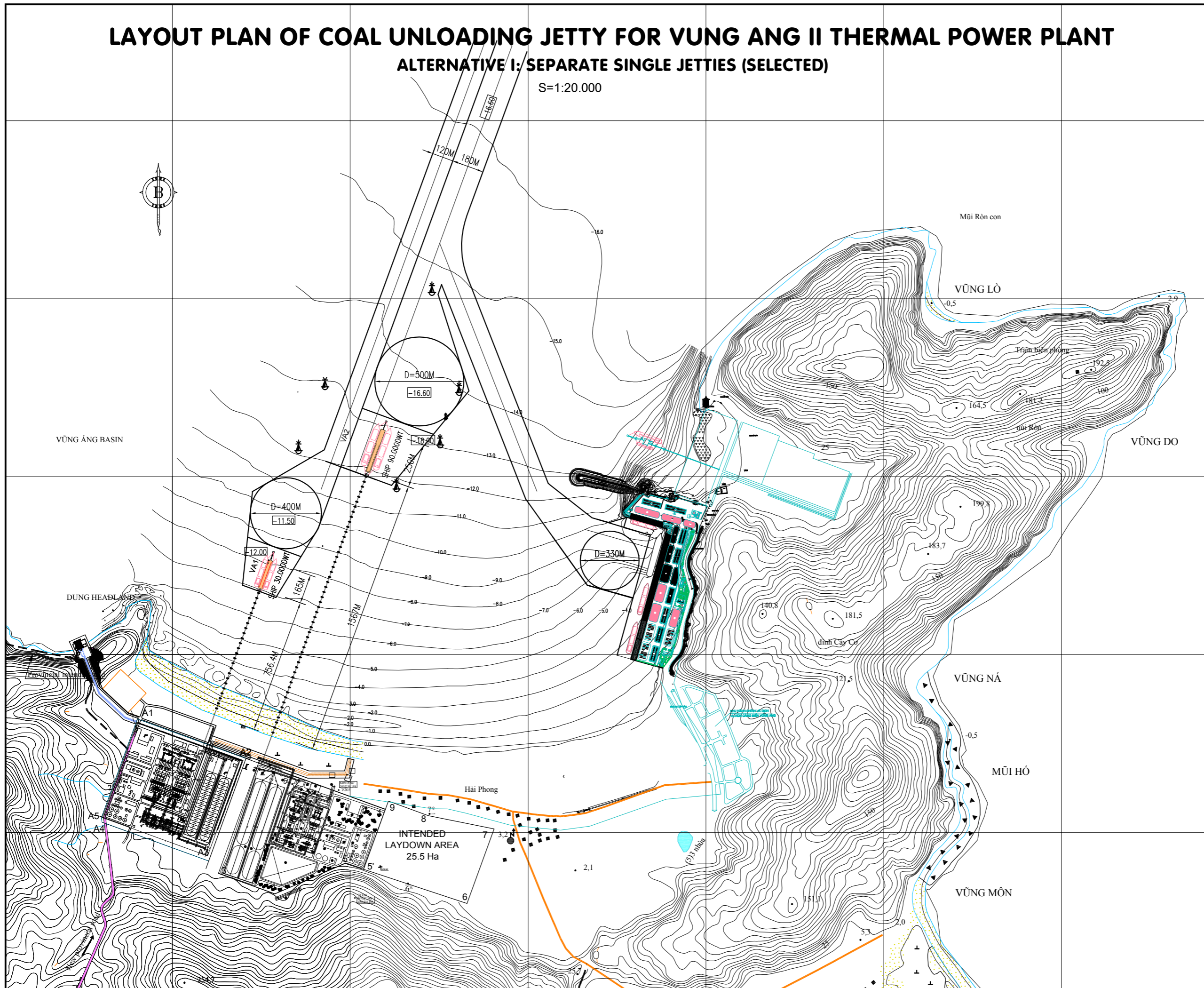
SCALE

V:	H:
DOC SIGN:	09-CDT-019
DRAWING NO:	GLN-004
PUBLISH:	01

LAYOUT PLAN OF COAL UNLOADING JETTY FOR VUNG ANG II THERMAL POWER PLANT

ALTERNATIVE I: SEPARATE SINGLE JETTIES (SELECTED)

S=1:20.000



NOTES	
1. ALL LEVELS ARE IN METERS ON CHART DATUM	
2. ALL DIMENSIONS ARE IN METRES	
OWNER: VAPCO	CONSULTANT: POYRY
REFERENCES	
DRAWING	REF
VUNG ANG II THERMAL POWER PLANT PROJECT ITEM: MARINE FACILITIES BASIC DESIGN	
AL1: SEPARATE SINGLE JETTIES (SELECTED)	
DRAWN	TRAN MINH THU
CHECKED	LE MY HANH
DESIGNER	HOANG MINH QUANG
TEAM LEADER	HOANG MINH QUANG
CHIEF OF DEP	NGUYEN MINH KHANG
QUALITY	DANG QUANG LIEN
Hanoi, December , 2009 PROJECT EXECUTIVE DIRECTOR	
NGUYEN MINH QUY	
SCALE	
V:	H:
DOC SIGN:	09-CDT-019
DRAWING NO:	LJ-001
PUBLISH:	01