

PROCESS MAIN EQUIPMENT LIST

TAG NO.	DESCRIPTION	SIZE (m)	EASTING	NORTHING
40-H-1001 A	POWER PLANT 1, WATER BATH HEATER	3.6 10x11.25	249.00	270.50
40-H-1001 B	POWER PLANT 1, WATER BATH HEATER	3.6 10x11.25	267.00	270.50
40-H-1000 A	POWER PLANT 3,4, WATER BATH HEATER	3.6 10x13.1	195.00	270.50
40-H-1000 B	POWER PLANT 3,4, WATER BATH HEATER	3.6 10x13.1	213.00	270.50
40-H-1000 C	POWER PLANT 3,4, WATER BATH HEATER	3.6 10x13.1	231.00	270.50
40-L-1000	PIG RECEIVER	0.7510/0.910x13.2	152.50	224.57
40-M-1000 A/B	FLOW METER FOR O MON POWER PLANT 1	HOLD 1	296.50	284.15
40-M-2000 A/B	FLOW METER FOR O MON POWER PLANT 3	HOLD 1	296.50	278.15
40-M-3000 A/B	FLOW METER FOR O MON POWER PLANT 4	HOLD 1	296.50	264.15
40-V-1000 A	FILTER SEPARATOR	1.07 10x7.2 T/T	150.00	199.30
40-V-1000 B	FILTER SEPARATOR	1.07 10x7.2 T/T	162.00	199.30
40-V-1000 C	FILTER SEPARATOR	1.07 10x7.2 T/T	174.00	199.30
-	PRESSURE REGULATOR FOR POWER PLANT 1	HOLD 1	296.50	258.45
-	PRESSURE REGULATOR FOR POWER PLANT 3/4	HOLD 1	296.50	270.65

UTILITY EQUIPMENT LIST

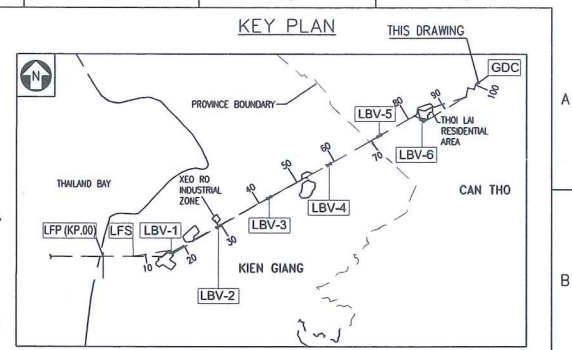
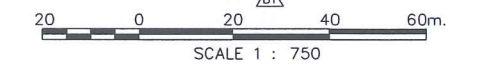
TAG NO.	DESCRIPTION	SIZE LxWxH (m)	EASTING	NORTHING
40-T-1001	DIESEL STORAGE TANK	1.2 10x2.6 T/T	137.10	312.00
40-T-1006	CLEAN WATER TANK	6x6 (LxW)	124.00	334.60
40-T-5001	FIRE WATER TANK	HOLD 1	121.00	323.50
40-T-5002	DIESEL DAY TANK	HOLD 1	136.40	315.20
40-P-1004	WATER SUPPLY PUMP	HOLD 1	121.80	339.20
40-P-1007	WATER PUMP	HOLD 1	121.80	337.70
40-P-5001	ELECTRIC DRIVEN FIREWATER PUMP (MAIN)	HOLD 1	137.00	326.50
40-P-5002	DIESEL DRIVEN FIREWATER PUMP (STAND-BY)	HOLD 1	137.00	330.50
40-P-5003	ELECTRIC DRIVEN JOCKEY PUMP (MAIN)	HOLD 1	136.30	323.50
40-P-5004	ELECTRIC DRIVEN JOCKEY PUMP (STAND-BY)	HOLD 1	136.30	321.50
40-V-1001	FLARE KNOCKOUT DRUM	1.8 10x6.3 T/T	208.25	201.00
40-V-1002	CLOSED DRAINS VESSEL	2.6 10x5.0 T/T	213.95	226.00
40-V-1003	UTILITY AIR RECEIVER	4.2x2.6x2.1	168.50	275.00
40-V-1004	FUEL GAS SCRUBBER	1.5 10x4.4 T/T	204.00	211.00
40-V-1005	INSTRUMENT AIR RECEIVER	1.4 10x4.0 T/T	168.50	268.00
40-X-1000 A/B	FUEL GAS HEATERS PACKAGE	0.2038 00 x 3.688	203/205	223.00
40-X-1001	AIR COMPRESSOR PACKAGE	HOLD 1	159.50	199.00
40-X-1002	AIR DRYER PACKAGE	2.4x1.8x1.7	159.50	265.20
40-X-1003	EMERGENCY DIESEL ENGINE DRIVEN GENERATOR PACKAGE	HOLD 1	132.50	301.825
40-X-1004	CPI SEPARATOR PACKAGE	3.7x4.6x5.6	195.00	199.00
40-X-1005	NITROGEN BACK UP BOTTLES PACKAGE	2.0x0.6x1295	159.50	260.25
40-X-1006	FLARE STACK PACKAGE (INCLUDED FLARE TIP)	27m HEIGHT	277.00	172.00
40-X-1007	NITROGEN BACK UP BOTTLES PACKAGE	2.0x0.6x1295	157.50	260.25
40-X-1008	WATER TREATMENT PACKAGE	HOLD 1	123.50	332.20

BUILDINGS AND OTHER ITEM LIST

NO.	DESCRIPTION	SIZE(M)	EASTING	NORTHING
1	CONTROL BUILDING	32x12 (LxW)	157.78	318.75
2	GUARD HOUSE	5x5 (LxW)	173.40	378.50
3	FIRE WATER PUMP HOUSE	18x10 (LxW)	132.00	319.75
4	UTILITY/WORKSHOP BUILDING	15x10 (LxW)	156.00	276.50
5	SUBSTATION	4x4 (LxW)	117.00	294.50
6	WIND SOCK	HOLD 1	197.00	375.00
7	WAREHOUSE BUILDING	20x10 (LxW)	132.00	263.00
8	VSAT ANTENNA	HOLD 1	160.90	321.70
9	CHILLER	HOLD 1	167.00	344.00
10	GAS CHROMATOGRAPH SKID	2x2	203.00	246.00
11	PARKING SHELTER	15x6.5 (LxW)	155.40	370.50
12	DIESEL GENERATOR HOUSE	13x6 (LxW)	129.00	300.00
13	AIR COMPRESSOR SHELTER	19x9.5	156.00	263.50
14	CLEAN WATER TANK SHELTER	6.2x6.2	124.00	334.60
15	CANTEEN	15x10	117.00	370.50
16	OFFICE BUILDING	15x10	135.00	370.50
17	FIRE TRUCK STATION	15x8	117.00	354.50

VN2000 COORDINATE

POINT	NATIONAL		LOCAL	
	X (m)	Y (m)	EASTING	NORTHING
L1	1120232.319	628155.906	81.2	414
L2	1120259.141	628430.499	357.1	408.8
L3	1119936.528	628465.321	354.3	84.3
L4	1119903.381	628196.189	83.1	82.6
P3	1120049.261	628221.348	117.922	224.57
2	1120241.648	628251.409	177.2	412.2
5	1120242.617	628261.359	187.2	412
6	1120253.037	628368.041	294.3	410
9	1120255.371	628391.917	318.3	409.5



- NOTES:**
- ALL DIMENSIONS, ELEVATIONS & COORDINATES ARE IN METRES UNLESS NOTED OTHERWISE
 - FGL +0.00; FINISHED GROUND LEVEL CORRESPONDS TO +2.7 METRE ABOVE NATIONAL ALTITUDES SYSTEM HONDAU - HAI PHONG COORDINATE SYSTEM: VN2000, CENTRAL MERIDIAN: 104°30', ZONE: 3'
 - VSAT ANTENNA & CHILLER TO BE PLACED ON THE TOP OF CONTROL ROOM
 - SAFETY BOUNDARY DEFINED ACCORDING TO THE VIETNAM GOVERNMENT DECREE NO. 13/2011/ND-CP, TABLE 9. SAFETY BOUNDARY SHALL HAVE VISIBLE SIGNS INSTALLED
 - HEADROOM SHALL BE MINIMUM OF 4.5M
 - GUIDE WIRES ARE INDICATIVE ONLY, TO BE DESIGNED BY CIVIL
 - SAFETY SIGNS TO BE PROVIDED AROUND THE FLARE RESTRICTION AREA
- LEGEND:**
- FENCE
 - BENCHMARK
 - STATION DATUM COORDINATES: VN2000 COORDINATES X 1119922.631 Y 628210.928
 - N 100
 - E 100
- HOLDS:**
- SIZE OF EQUIPMENT AND SKID PACKAGE
 - OFFICE BUILDING AND CANTEEN DIMENSION TO BE FINALIZED ONCE NUMBER OF PERSONNEL IS CONFIRMED
 - PIPE RACK, SLEEPER AND SERVICE PLATFORM DIMENSIONS AND ALEVATION.
 - LOCATION
 - PREVAILING WIND TO BE CONFIRMED BY CIVIL
 - COORDINATES TO BE CONFIRMED BY ONSHORE PIPELINE

NO.	DESCRIPTION	SIZE(M)	EASTING	NORTHING
4	SWG-WPPVE-FEED-40-ME-LST-0001			
3	SWG-WPPVE-FEED-40-PR-UFD-0001/0006			
2	SWG-WPPVE-FEED-40-PR-PFD-0001			
1	SWG-WPPVE-FEED-40-PR-PID-0001/0023			

REFERENCED DOCUMENTS

DATE	WP-PVE	SWPOC	CA
20/7/17			
27/6/17			

CLIENT: PETROVIETNAM OIL AND GAS GROUP
SOUTHWEST PIPELINE OPERATION COMPANY

CONTRACTOR: WorleyParsons
CONSORTIUM OF WORLEYPARSONS & PV ENGINEERING

PROJECT: BLOCK B - O MON GAS PIPELINE

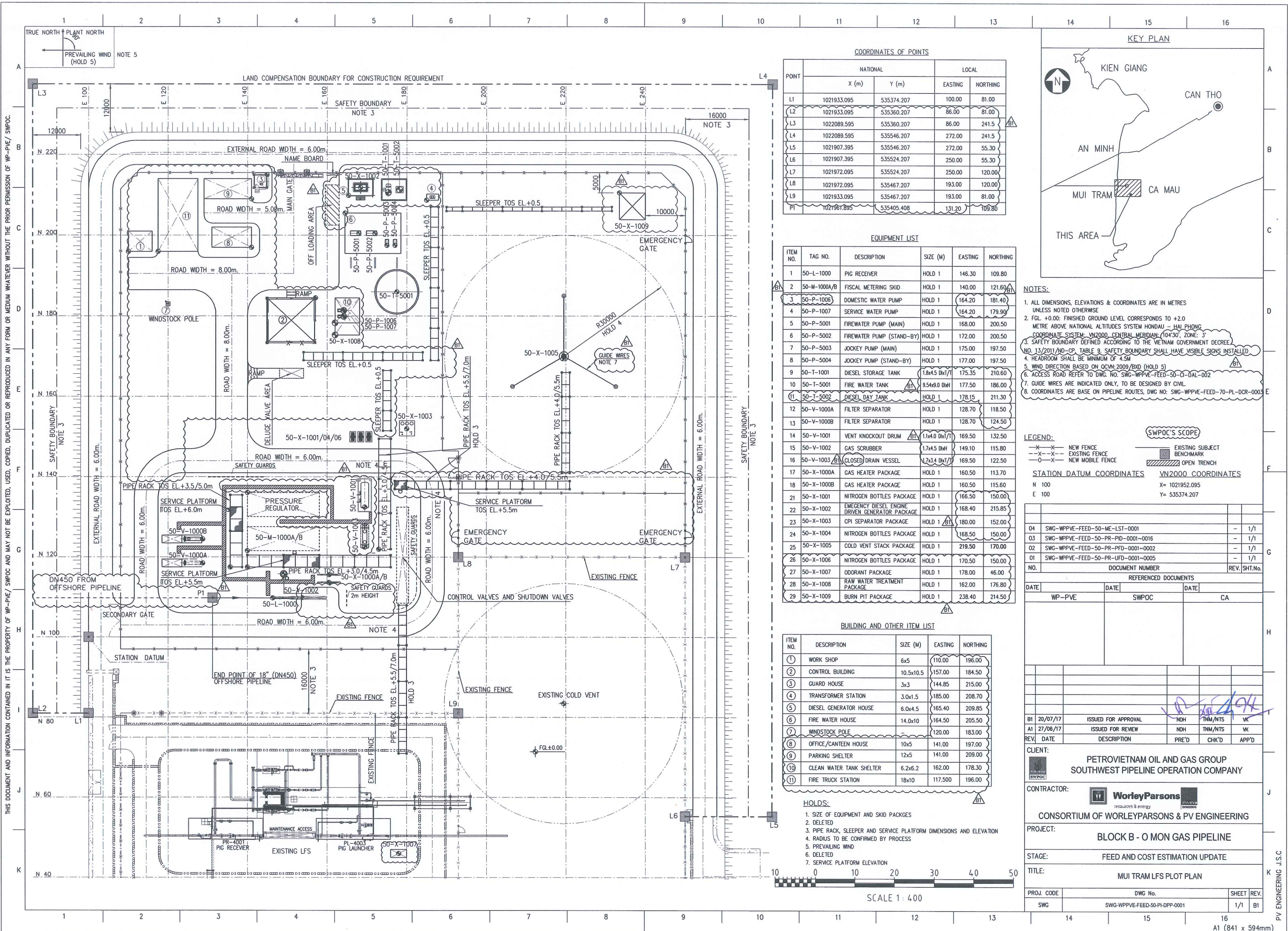
STAGE: FEED AND COST ESTIMATION UPDATE

TITLE: O MON GDC PLOT PLAN

PROJ. CODE	DWG No.	SHEET	REV.
SWG	SWG-WPPVE-FEED-40-PH-DPP-0001	1/1	B1

THIS DOCUMENT AND INFORMATION CONTAINED IN IT IS THE PROPERTY OF WP-PVE/ SWPOC AND MAY NOT BE EXPLOITED, USED, COPIED, DUPLICATED OR REPRODUCED IN ANY FORM OR MEDIUM WITHOUT THE PRIOR PERMISSION OF WP-PVE/ SWPOC.

PV ENGINEERING J.S.C



COORDINATES OF POINTS

POINT	NATIONAL		LOCAL	
	X (m)	Y (m)	EASTING	NORTHING
L1	1021933.095	535374.207	100.00	81.00
L2	1021933.095	535360.207	86.00	81.00
L3	1022089.595	535360.207	86.00	241.5
L4	1022089.595	535546.207	272.00	241.5
L5	1021907.395	535546.207	272.00	55.30
L6	1021907.395	535524.207	250.00	55.30
L7	1021972.095	535524.207	250.00	120.00
L8	1021972.095	535467.207	193.00	120.00
L9	1021933.095	535467.207	193.00	81.00
P1	1021961.895	535405.408	131.20	109.80

EQUIPMENT LIST

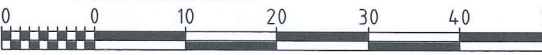
ITEM NO.	TAG NO.	DESCRIPTION	SIZE (M)	EASTING	NORTHING
1	50-L-1000	PIG RECEIVER	HOLD 1	146.30	109.80
2	50-M-1000A/B	FISCAL METERING SKID	HOLD 1	140.00	121.60
3	50-P-1006	DOMESTIC WATER PUMP	HOLD 1	164.20	181.40
4	50-P-1007	SERVICE WATER PUMP	HOLD 1	164.20	179.90
5	50-P-5001	FIREWATER PUMP (MAIN)	HOLD 1	168.00	200.50
6	50-P-5002	FIREWATER PUMP (STAND-BY)	HOLD 1	172.00	200.50
7	50-P-5003	JOCKEY PUMP (MAIN)	HOLD 1	175.00	197.50
8	50-P-5004	JOCKEY PUMP (STAND-BY)	HOLD 1	177.00	197.50
9	50-T-1001	DIESEL STORAGE TANK	1.8x4.5 Dm/7.1	175.35	210.60
10	50-T-5001	FIRE WATER TANK	9.54x9.0 DmH	177.50	186.00
11	50-T-5002	DIESEL DAY TANK	HOLD 1	178.15	211.30
12	50-V-1000A	FILTER SEPARATOR	HOLD 1	128.70	118.50
13	50-V-1000B	FILTER SEPARATOR	HOLD 1	128.70	124.50
14	50-V-1001	VENT KNOCKOUT DRUM	1.1x4.0 Dm/7.1	169.50	132.50
15	50-V-1002	GAS SCRUBBER	1.7x4.5 DmH	149.10	115.80
16	50-V-1003	(CLOSED) DRAIN VESSEL	1.7x3.4 Dm/7.1	169.50	122.50
17	50-X-1000A	GAS HEATER PACKAGE	HOLD 1	160.50	113.70
18	50-X-1000B	GAS HEATER PACKAGE	HOLD 1	160.50	115.60
21	50-X-1001	NITROGEN BOTTLES PACKAGE	HOLD 1	166.50	150.00
22	50-X-1002	EMERGENCY DIESEL ENGINE DRIVEN GENERATOR PACKAGE	HOLD 1	168.40	215.85
23	50-X-1003	CPI SEPARATOR PACKAGE	HOLD 1	180.00	152.00
24	50-X-1004	NITROGEN BOTTLES PACKAGE	HOLD 1	168.50	150.00
25	50-X-1005	COLD VENT STACK PACKAGE	HOLD 1	219.50	170.00
26	50-X-1006	NITROGEN BOTTLES PACKAGE	HOLD 1	170.50	150.00
27	50-X-1007	ODORANT PACKAGE	HOLD 1	178.00	46.00
28	50-X-1008	RAW WATER TREATMENT PACKAGE	HOLD 1	162.00	176.80
29	50-X-1009	BURN PIT PACKAGE	HOLD 1	238.40	214.50

BUILDING AND OTHER ITEM LIST

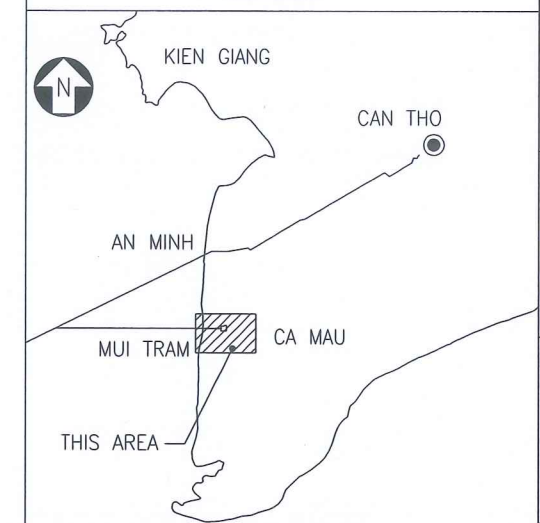
ITEM NO.	DESCRIPTION	SIZE (M)	EASTING	NORTHING
1	WORK SHOP	6x5	110.00	196.00
2	CONTROL BUILDING	10.5x10.5	157.00	184.50
3	GUARD HOUSE	3x3	144.85	215.00
4	TRANSFORMER STATION	3.0x1.5	185.00	208.70
5	DIESEL GENERATOR HOUSE	6.0x4.5	165.40	209.85
6	FIRE WATER HOUSE	14.0x10	164.50	205.50
7	WINDSTOCK POLE		120.00	183.00
8	OFFICE/CANTEEN HOUSE	10x5	141.00	197.00
9	PARKING SHELTER	12x5	141.00	209.00
10	CLEAN WATER TANK SHELTER	6.2x6.2	162.00	178.30
11	FIRE TRUCK STATION	18x10	117.500	196.00

HOLDS:

- SIZE OF EQUIPMENT AND SKID PACKAGES
- DELETED
- PIPE RACK, SLEEPER AND SERVICE PLATFORM DIMENSIONS AND ELEVATION
- RADIUS TO BE CONFIRMED BY PROCESS
- PREVAILING WIND
- DELETED
- SERVICE PLATFORM ELEVATION



KEY PLAN



- NOTES:
- ALL DIMENSIONS, ELEVATIONS & COORDINATES ARE IN METRES UNLESS NOTED OTHERWISE
 - FGL +0.00: FINISHED GROUND LEVEL CORRESPONDS TO +2.0 METRE ABOVE NATIONAL ALTITUDES SYSTEM HONAIU - HAI PHONG COORDINATE SYSTEM: VN2000 CENTRAL MERIDIAN (104°30', ZONE: 3)
 - SAFETY BOUNDARY DEFINED ACCORDING TO THE VIETNAM GOVERNMENT DECREE NO. 13/2011/ND-CP, TABLE 9. SAFETY BOUNDARY SHALL HAVE VISIBLE SIGNS INSTALLED
 - HEADROOM SHALL BE MINIMUM OF 4.5M
 - WIND DIRECTION BASED ON QCVN:2009/BXD (HOLD 5)
 - ACCESS ROAD REFER TO DWG. NO. SWG-WPPVE-FEED-50-CL-DAL-002
 - GUIDE WIRES ARE INDICATED ONLY, TO BE DESIGNED BY CIVIL
 - COORDINATES ARE BASE ON PIPELINE ROUTES, DWG NO: SWG-WPPVE-FEED-70-PL-DCR-0003

LEGEND:

- x-x- NEW FENCE
- x-x-x- EXISTING FENCE
- o-x-x- NEW MOBILE FENCE
- EXISTING SUBJECT BENCHMARK
- ▨ OPEN TRENCH

STATION DATUM COORDINATES VN2000 COORDINATES

N 100 X = 1021952.095
E 100 Y = 535374.207

NO.	DOCUMENT NUMBER	REV.	SHT.No.
04	SWG-WPPVE-FEED-50-ME-LST-0001	-	1/1
03	SWG-WPPVE-FEED-50-PR-PID-0001-0016	-	1/1
02	SWG-WPPVE-FEED-50-PR-PFD-0001-0002	-	1/1
01	SWG-WPPVE-FEED-50-PR-UFD-0001-0005	-	1/1

REFERENCED DOCUMENTS			
DATE	WP-PVE	DATE	SWPOC
			CA

REV.	DATE	DESCRIPTION	PRE'D	CHK'D	APP'D
B1	20/07/17	ISSUED FOR APPROVAL	NDH	TMM/NTS	VK
A1	27/06/17	ISSUED FOR REVIEW	NDH	TMM/NTS	VK

CLIENT: PETROVIETNAM OIL AND GAS GROUP
SOUTHWEST PIPELINE OPERATION COMPANY

CONTRACTOR: **WorleyParsons**
resources & energy
CONSORTIUM OF WORLEYPARSONS & PV ENGINEERING

PROJECT: BLOCK B - O MON GAS PIPELINE

STAGE: FEED AND COST ESTIMATION UPDATE

TITLE: MUI TRAM LFS PLOT PLAN

PROJ. CODE	DWG No.	SHEET	REV.
SWG	SWG-WPPVE-FEED-50-PI-DPP-0001	1/1	B1